

# DONNER & BLITZEN

## INCORPORATED

---



---

## OWNER'S MANUAL

### 7FT ICELAND WHITE PINE

PRODUCT CODE: 01085411-5

UPC CODE: 030539 031848

DATE OF PURCHASE: \_\_\_\_/\_\_\_\_/\_\_\_\_

sears

Please refer to part numbers when reordering

For questions or comments about product:


Email: [customerservice@willis.com.tw](mailto:customerservice@willis.com.tw) or Call toll-free: (866)210 5958.

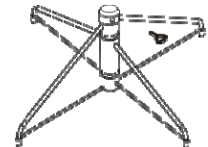
Made in / Hecho en CHINA

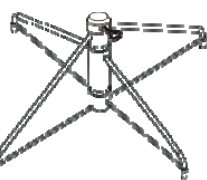
Distributed by Sears, Roebuck and Co., Hoffman Estates, IL 60179

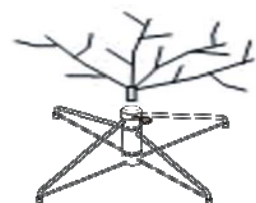


# ASSEMBLY INSTRUCTIONS FOR TREE STAND

- 

**Fig. 1**
1. Tree stand consists of a metal stand and a single eye bolt. (See Fig.1)
- 

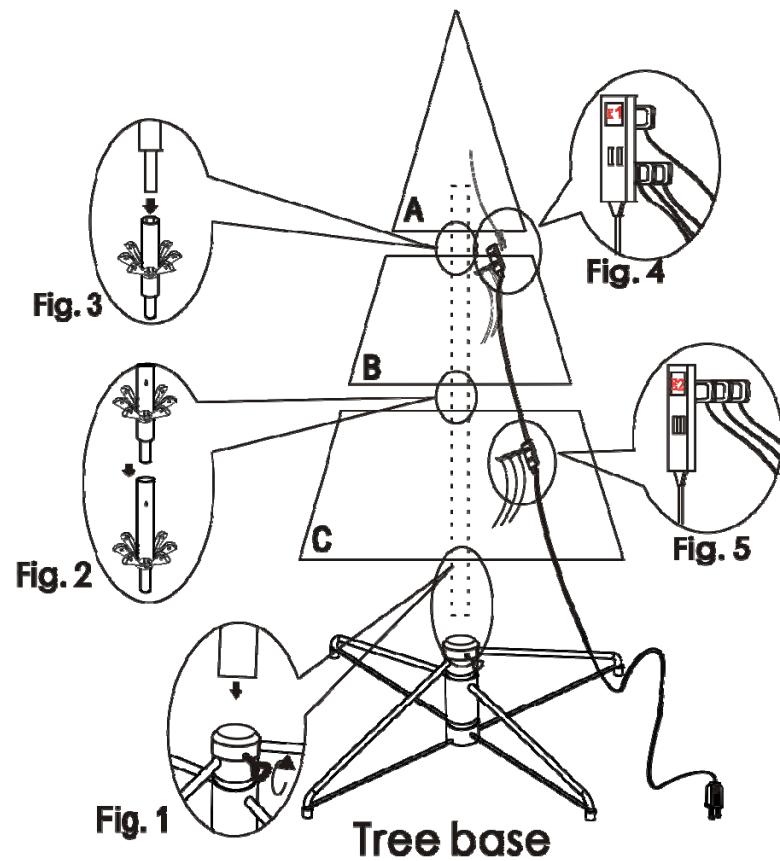
**Fig. 2**
2. Open the stand to a 90 degree angle until the hole lines up with the hole on the tube. (See Fig.2)
- 

**Fig. 3**
3. Insert an eye bolt and screw into the hole. (See Fig.3)
- 

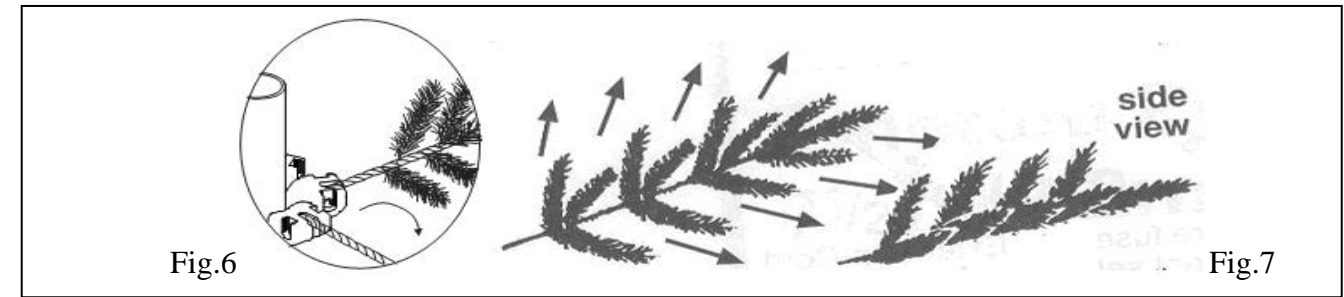
**Fig. 4**
4. Insert the tree into the stand and adjust accordingly. The tree should be straight and balanced correctly. (See Fig.4)

## ASSEMBLY INSTRUCTIONS

- Before you start to assemble your tree, place the tree stand on a level surface.
- Assemble tree stand according to the assembly instruction for the tree stand.
- Insert the bottom section (C) of the trunk into the assemble stand. (See Fig.1)
- Insert the middle section (B) into the bottom section (C), the upper section (A) into middle section (B). (See Fig.2,3)
- Connect light set plug from section (A) and (B) into outlet of extension cord (E1) mounted in section (B). Connect light set plugs from section (C) into extension cord (E2) hanging down from section (B).(See Fig.4,5)
- Open all the branches. (See Fig.6)



- Allow the branches to fall into place or gently pull branches up and out. When adjusting branches be sure that all wires are free of branch hinges. (See Fig.6)
- Shape the branches. Starting with tips closest to the pole, shape one tip to the right, one to the left and one at the center of the main stem. Repeat pattern for each branch. (See Fig.7)



- Connect the plug of the extension cord from bottom section (C) to the wall outlet. Now your tree should be completed with all lights illuminated. Your tree is ready to be decorated and enjoyed.

## IMPORTANT SAFETY INSTRUCTIONS READ AND FOLLOW ALL SAFETY INSTRUCTIONS

- Do not use seasonal products outdoors unless marked suitable for indoor and outdoor use. When products are used in outdoor applications, connect the product to a Ground Fault Circuit Interrupting (GFCI) outlet. If one is not provided, contact a qualified electrician for proper installation.
- This seasonal use product is not intended for permanent installation or use.
- Do not mount or place near gas or electric heaters, fireplace, candles or other similar sources of heat.
- Do not secure the wiring of the product with staples or nails, or place on sharp hooks or nails.
- Do not let lamps rest on the supply cord or on any wire.
- Unplug the product when leaving the house, when retiring for the night, or if left unattended.
- This is an electric product – not a toy! To avoid risk of fire, burns, personal injury and electric shock it should not be played with or placed where small children can reach it.
- Do not use this product for other than its intended use.
- Do not hang ornaments or other objects from cord, wire, or light string.
- Do not cover the product with cloth, paper or any material not part of the product when in use.
- This product is equipped with push-in type lamps. Do not twist lamps.
- This product has a polarized plug (one blade is wider than the other) as a feature to reduce the risk of electric shock. This plug will fit in a polarized outlet only one way. If the plug does not fit fully in the outlet, reverse the plug. If it still does not fit, contact a qualified electrician. Do not use with an extension cord unless plug can be fully inserted. Do not alter or replace the plug.
- This product employs overload protection (fuse). A blown fuse indicates an overload or short-circuit situation. If the fuse blows, unplug the product from the outlet. Also unplug any additional strings or products that may be attached to the product. Replace the fuse as per the user servicing instructions (follow product marking for proper fuse rating) and check the product. If the replacement fuse blows, a short-circuit may be present and the product should be discarded.
- Read and follow all instructions that are on the product or provided with the product.

## SAVE THESE INSTRUCTIONS

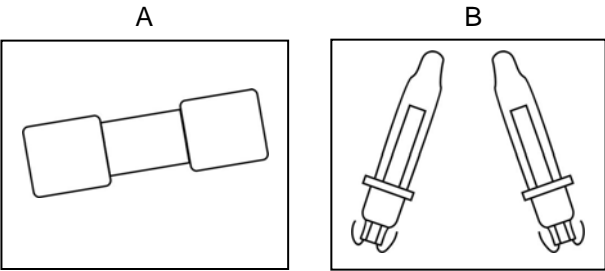
### TROUBLE SHOOTING (If Lights Do Not Work):

- If entire tree does not light, make sure extension cord plug is securely inserted into a working electrical outlet.
- Check whether all bulbs are tightly fixed inside the lamp holder.
- If a bulb is blown or broken, replace the faulty bulb according to bulb replacement instructions below.
- If the fuse in the light set plug or extension cord plug is blown, replace the blown fuse according to fuse replacement instructions below.
- If you are still experiencing problems with the tree please call us.

# CAUTION! – ALWAYS UNPLUG YOUR TREE FROM ITS POWER SOURCE BEFORE ATTEMPTING EITHER FUSE OR BULB REPLACEMENT.

## REPLACEMENT PARTS LIST

Part	Description	Part #
A	Fuses	W14T0279-F
B	Bulbs	W14T0279-B

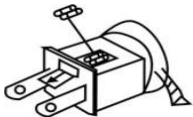


## FUSE REPLACEMENT:

This product comes with overload protection (fuse). A blown fuse indicates an overload or short circuit. If a fuse blows, unplug tree from wall outlet. Replace the fuse as per the fuse replacement instructions below (follow product marking for proper fuse rating). If the fuse blows, a short circuit may be present and the product should be reviewed to determine the cause.

A) Light set fuse replacement (replaceable 3-amp 125V fuses are located in the spare parts bag)

1. Grasp plug and remove from its power source.
2. Locate blown fuse(s) by sliding access cover on top of plug towards prongs.
3. Remove blown fuse by turning the plug over. Fuse should fall into your hand (Gentle tapping may be required).
4. Locate spare replacement fuses in spare parts bag.
5. Replace blown fuse with spare replacement fuse(s). Close fuse cover by sliding fuse access cover towards the cord.

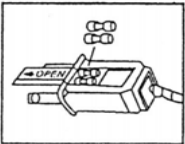


(Exhibit A)

**CAUTION:** To reduce risk of fire – replace fuse in light set with only 3-amp 125 volt fuse. Do not replace attachment plug. Discard product if the attachment plug is damaged.

B) Extension cord fuse replacement (1 replaceable 5-amp 125V fuse is located in the plug):

1. Grasp plug and remove from its power source.
2. Locate blown fuse by sliding access cover on top of plug towards prongs.
3. Remove blown fuse by turning the plug over. Fuse should fall into your hand (Gentle tapping may be required).
4. Locate 1 spare fuse already located in plug and spare replacement fuses in spare parts bag.
5. Replace blown fuse with the spare replacement fuse. Close fuse cover by sliding fuse access cover towards the cord.

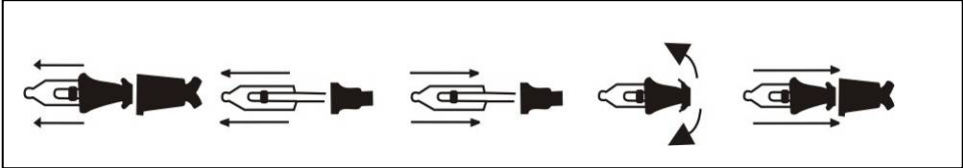


(Exhibit B)

**CAUTION:** To reduce risk of fire – replace fuse in extension cord with only 5-amp 125 volt fuse. Do not replace attachment plug. Discard product if the attachment plug is damaged.

## BULB REPLACEMENT:

1. Grasp plug and remove from its power source
2. Pull bulb AND plastic base straight out of socket. Do not twist bulbs.
3. Replace burned bulb with 2.5 volt 0.425 watt bulb ONLY. (Additional bulbs are included for your convenience).



**Caution:** To reduce the risk of fire or electric shock, do not attempt to modify string.

The fusible bulb (with white lampbase) is located in the second position of each individual circuit. Replace the burned fusible bulb with the same white lampbase replacement bulb after unplug.

## BASIC PRECAUTIONS SHOULD BE FOLLOWED WHEN USING THIS PRODUCT:

(Inspect product carefully before using or re-using):

1. This is an electrical product – not a toy! To avoid risk of fire, burns, personal injury and electrical shock it should not be played with.
2. Do not mount or place near gas or electric heaters, fireplace, candles or other similar sources of heat.
3. Do not cover product with cloth, paper or any material when product is in use.
4. Do not hang ornaments or other objects from cord, wire, or light string. Hang ornaments only on the tree itself.
5. For your safety, unplug the product when leaving the house, retiring for the night, or if left unattended.
6. Do not let bulbs rest on the supply cord or on any wire.
7. Do not close doors or windows on the product or extension cords as this may damage the wire insulation.
8. Should you discover any of the following: a) cut, damaged, or frayed wire insulation; b) cracks in the sockets; c) loose connections or exposed wires, please call us.

**STORAGE:** When storing the product, carefully remove the product from wherever it is placed, including trees, branches, or bushes, to avoid any undue strain or stress on the product conductors, connections, and wires. Disassembled tree can be stored in its original box. Store tree in a cool dry place where the temperature does not exceed 100 degrees Fahrenheit.