

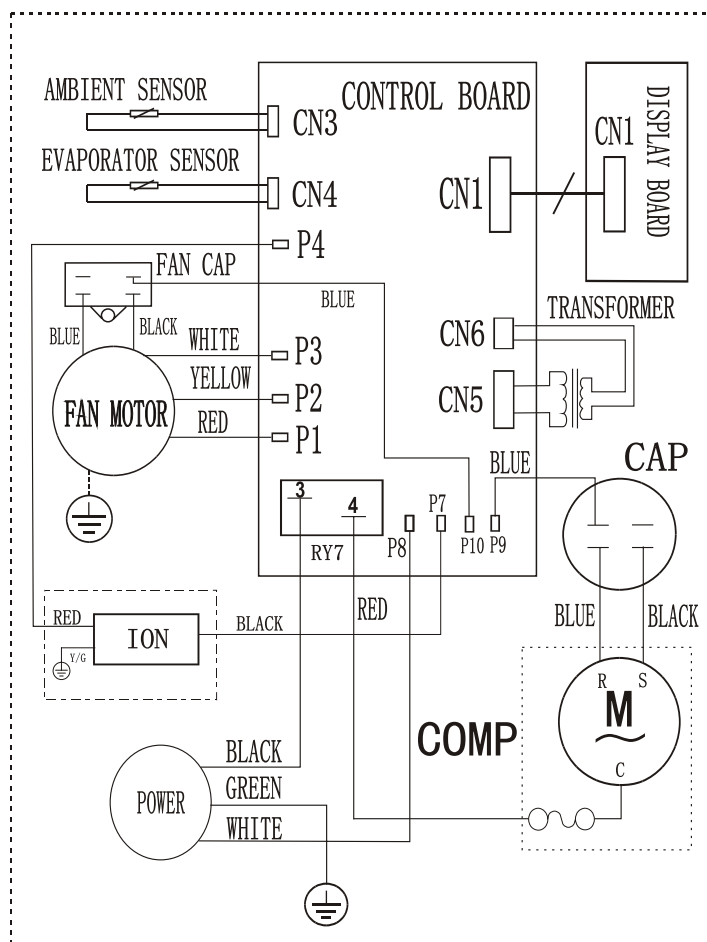
THIS INFORMATION IS DESIGNED TO ASSIST QUALIFIED REPAIR PERSONNEL ONLY. UNTRAINED PERSONS SHOULD NOT ATTEMPT TO MAKE REPAIRS DUE TO THE POSSIBILITY OF ELECTRICAL SHOCK.

TECH SHEET

PART No.5304493845

WARNING

DISCONNECT FROM
ELECTRICAL SUPPLY
BEFORE SERVICING



NOTE:

For compressor terminal arrangement, refer to compressor terminal cover.

Refer to Nameplate For:
Voltage, Amps and Refrigerant Charge.

Locked Rotor Amps 65.2

FUNCTIONAL PARTS

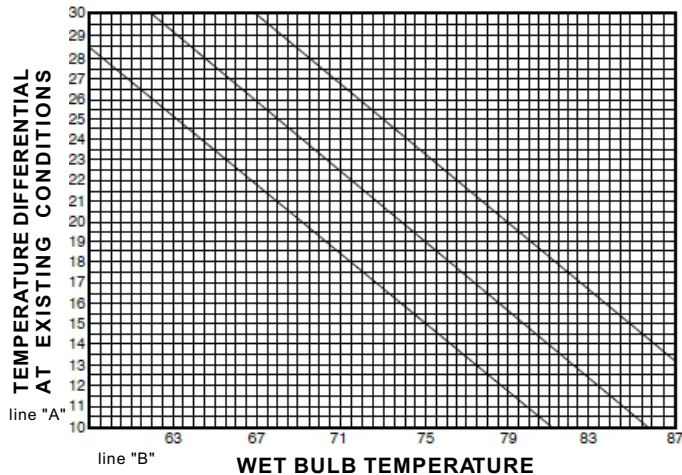
NAME	PART NO.
Compressor	5304493843
Capacitor	5304493844 (60UF/450V-55)
Fan Motor	5304482882
Turbo Fan	5304472407
Fan	5304472356
Room Thermistor	5304491883
Overload Protector	N/A

NOTICE: PLEASE RETURN THIS SHEET TO ITS ORIGINAL LOCATION

TO USE THE PERFORMANCE CHART

1. Record inlet and outlet air dry bulb temperature.
2. Subtract outlet temperature from inlet temperature.
3. Record inlet air wet bulb temperature.
4. Locate wet bulb temperature on line "B".
5. Extend point on line "B" up to sloped performance line on chart; then over to the L.H. column. (line "A")
6. Actual temperature differential should not be more than $\pm 3^\circ$ from this reading.

PERFORMANCE CHART



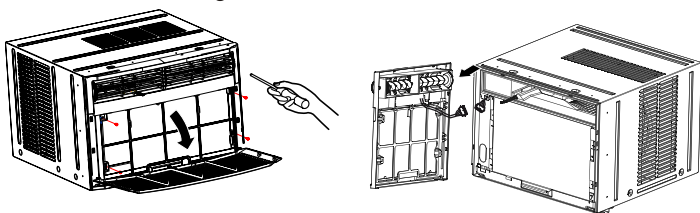
COMPENSATION CHART

If Outside Ambient Air Temp. is;	Correct Performance Line by:	Wattage
80	Adding 1-1/2°	2460
85	Adding 1°	
90	Adding 1/2°	
95	No Correction	2660
100	Deducting 1/2°	
105	Deducting 1°	
110	Deducting 1-1/2°	3450

TO DISASSEMBLE MECHANICAL PARTS

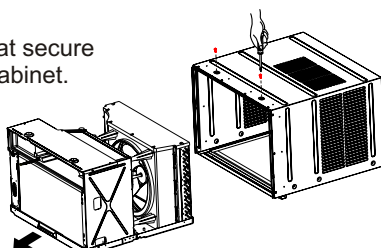
FRONT GRILLE

1. Unplug the unit from the source of power.
2. Open the front grille and remove.
3. Remove the screws securing the front frame.
4. Depress the cabinet sides to release the side frame locking tabs.
5. Lift front frame slightly to unlock top tabs and rotate frame to the left.
6. Disconnect the electronics plug.
7. Remove the front grille.



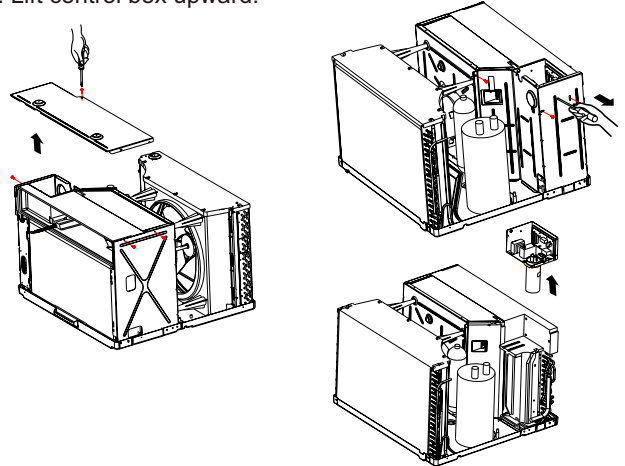
CABINET

1. Remove the top 2 screws that secure the refrigeration unit to the cabinet.
2. Pull the unit out of the cabinet using the base handle in front of the evaporator.



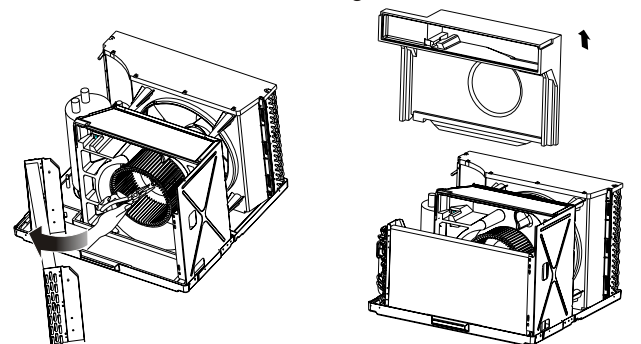
CONTROL BOX

1. Remove the screw that fastens the power cord.
2. Remove the screws that fasten the top cover.
3. Remove the screws that fasten the left side bulkhead and control box.
4. Disconnect the compressor and fan motor wires.
5. Slide the left bulkhead up to expose the control box.
6. Disconnect defrost and intake thermistors from their holders.
7. Lift control box upward.



EVAPORATOR FAN AND SCROLL

1. Squeeze the sides of the Fresh Air Handle in the front to release the handle stops and push it rearward.
2. Pull the Fresh Air Gate from rear of scroll by lifting upward as it is pulled out.
3. Cut top seal down middle and lift front scroll air duct.
4. Remove the screws that fasten the evaporator to the base.
5. Gently lift and rotate evaporator forward exposing the turbo fan.
6. Remove turbofan lock nut using socket wrench.



CONDENSER FAN AND SHROUD

1. Remove the screws which fasten the rear shroud to the evaporator.
2. Remove the screws which fasten the rear shroud to the condenser.
3. Remove the screws which fasten the rear shroud to the base.
4. Gentle lift the rear shroud assembly (including the condenser fan).
5. Remove the condenser fan using a socket wrench.

