



Kenmore 27" Wide High-Efficiency Laundry Center

○ Electric White 26-61712    ○ Gas White 26-71712

- 27 inches wide
- Can clean up to 23 bath towels in a single load\*
- 3.8 cu. ft. capacity washer
- 8 wash cycles
- Low profile wash plate cleaning system
- Bleach dispenser
- 5.5 cu. ft. dryer
- 8 drying cycles, 3 temperatures
- Auto dry
- Wash and dry at the same time

\*Based on approximately 24" x 44" 100% cotton bath towels

SELECTION	KENMORE
Washer and Electric Dryer: White	26-61712
Washer and Gas Dryer: White	26-71712

WASHER FEATURES	
Basket Volume (Cu. Ft.)	3.8
Number of Speeds	Variable
Cycle Selections:	8
Normal	•
Heavy Duty	•
Casual	•
Bedding	•
Towels	•
Delicates	•
Rinse / Spin	•
Presoak	•
Wash / Rinse Temperatures	3
Rinse Level Selections	3
Agitator	Low Profile Wash Plate
Bleach Dispenser	•
Basket Construction	Stainless
Leveling Legs	•
Motor H.P.	Variable

DRYER FEATURES	
Capacity (Cu. Ft.)	5.5
Cycle Selections:	8
Normal	•
Casual	•
Heavy Duty	•
Delicates	•
Timed Dry	90 - 60 - 30 - 15 Min
Temperature Selections	3
Auto Dry	•
Push / Turn-To-Start Button	•
Internal / Up-Front Lint Filter	Self-Cleaning
Venting	4-Way After Coming Out The Back (Rear, Bottom, Right, Left)

GENERAL FEATURES	
Front Serviceable	•
Drain Hose	Included
Fill Hoses	Not Included #02649535000
Power Cord	Included Gas Only
Washer, Electric Dryer: Volts / Hz / Amps	220/240 / 60 / 30
Watts (Dryer Heater)	4,500
Electric Dryer Circuit Required (60Hz.)	30 Amp
Washer, Gas Dryer: Volts / Hz / Amps	120 / 60 / 15
BTU Per Hour	20,000
LP Gas Conversion Kit	26-417-PCK3100
Est. Yearly Energy Consumption	175 kWh / yr.
Est. Yearly Operating Cost††	
Gas Water Heater / Elec. Water Heater	\$12 / \$21
Item Weight (Approx. Lbs.)	250
Shipping Weight (Approx. Lbs.)	275

WARRANTY	
1 Year Limited Warranty – Entire Appliance	Parts & Labor

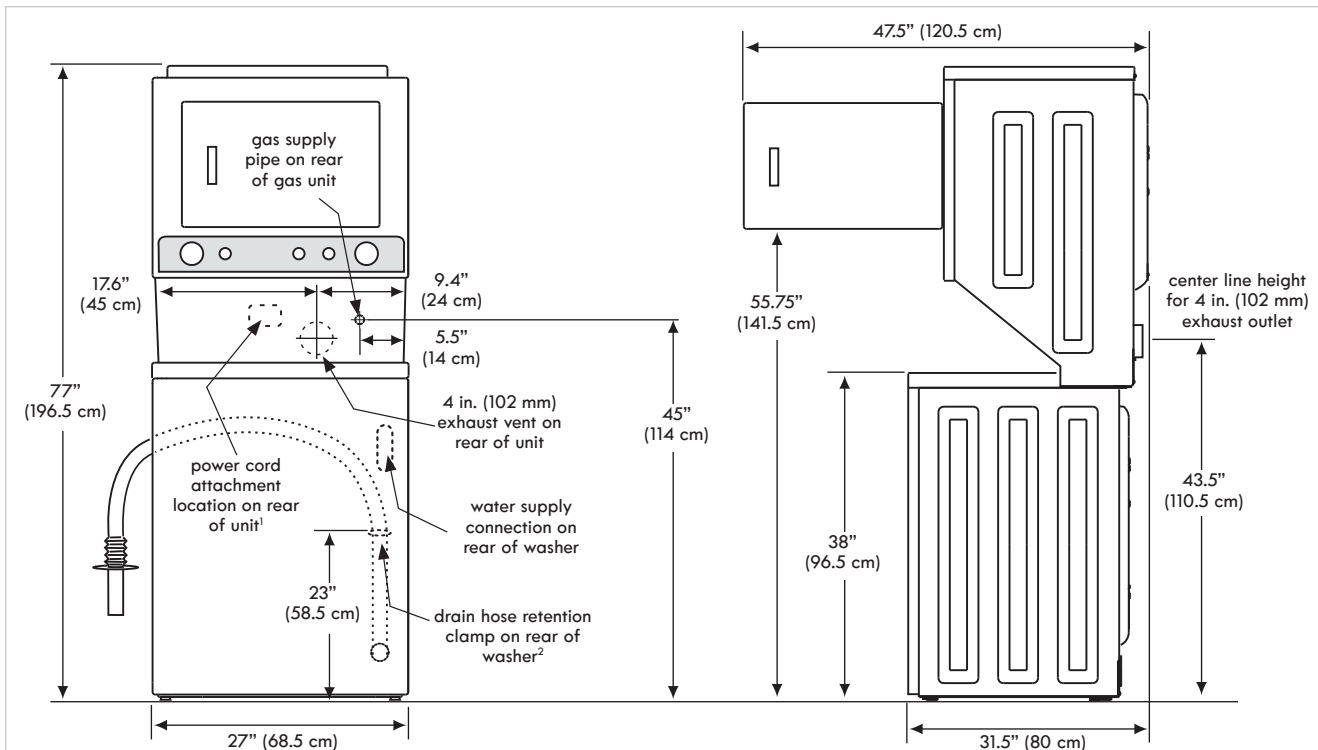
If used for other than private family purposes, warranty applies for only 90 days.  
††All energy \$ / Yr. figures are calculated at the national average cost of 12 cents per kWh and \$1.09 per therm. Energy rebates are offered and paid by the energy supplier in states where such programs exist. Criterion is based on percentage of energy efficiency attained beyond the 2007 standard. Dollar amounts may differ.



Traditional laundry pairs take up twice the floor space in the laundry room



New Kenmore laundry centers offer a more efficient use of floor space



<sup>1</sup>Power supply cord length on gas unit approximately 60 inches (152.5 cm).

<sup>2</sup>Loose drain hose length beyond clamp approximately 51.5 inches (131 cm).

## DRYER VENTING RECOMMENDATIONS



Clamps are recommended for wall and dryer connections. Steel clamps designed to resist stretching, with Phillips / hex head screw are included one each on elbows and periscopes.

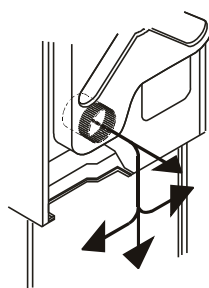


**26-98379 — Vent Hood**  
Aluminum body and plastic molded hood with a 4" opening.

### IMPORTANT NOTE:

Do not use non-metal flexible duct. Also, when installing the venting system, do not exceed the specified length for the vent duct. Venting systems which are longer than specified will accumulate lint, increase drying time and energy use and shorten the life of the dryer.

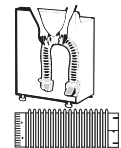
Number of 90° turns	MAXIMUM LENGTH of 4" (102 mm) Rigid Metal Duct		
	VENT HOOD TYPE		
	(Preferred)		
0	56 ft. (17 m)	42 ft. (13 m)	
1	48 ft. (14.5 m)	34 ft. (10.5 m)	
2	40 ft. (12 m)	26 ft. (8 m)	
3	32 ft. (9.5 m)	18 ft. (5.5 m)	



4" Clearance Behind the Dryer is Preferred for Best Airflow.  
2" Clearance is Achieved With Periscopes.

### 4" CLEARANCE BEHIND DRYER

**26-49900 — Over-The-Top™ Kit**  
Universal solution, 8 foot length. Kit includes two 4 ft. pipe sections with attached elbows, two close elbows, clamps and wall plate.



**26-49608 — Flexible Pipe**  
4" x 6' with snap-lock fittings, 90° turn takes 1 foot length and 6 inch clearance

**26-49609 — Close Elbow**  
Turns 90° within 4", rotating collars and snap-lock fittings



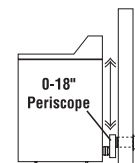
### 2" CLEARANCE BEHIND DRYER

**26-49901 — Periscope 0-5"**

**26-49908 — Periscope 0-18"**  
For outlets that overlap or are very close

**26-49904 — Periscope 18-29"**  
Reaches side of most dryers

**26-49905 — Periscope 29-50"**  
Reaches top of most dryers

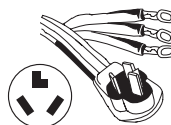


### POWER CORDS FOR ELECTRIC DRYERS ONLY

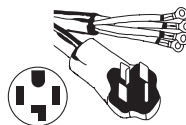
26-49387, 26-49787

All Electric Dryers Require Cord

26-49388, 26-49788



Order	Wire	Length
26-49387	3	4 ft.
26-49787	3	6 ft.
26-49388*	4	4 ft.
26-49788*	4	6 ft.



\*Complies with 1/1/96 NEC code revision for new construction and remodeling

Gas Dryer Connector — Stainless Steel

26-49590	1/2" - 3/8" Flex, 5 ft.
26-49585*	3/8" - 3/8" Flex, 5 ft.

\*Los Angeles only