



RENEW
POWERBASE+ from Beautyrest

CONTENTS

Advisory.....	3
Acoustics.....	5
Assembly	6
Renew™+ Remote Control Function	13
Renew™+ Remote Control Programming.....	14
Power Down Function.....	18
USB Station Relocation (when installing adjustable base into case good)	21
Troubleshooting	25
1-3-25 Warranty	26



If adjustable base does not operate or if parts are missing, call:

1.855.722.2337

Do not contact retail store or dealer.

IMPORTANT INFORMATION

READ THE FOLLOWING INFORMATION CAREFULLY BEFORE USING THIS PRODUCT



WARNING

FOR OPTIMUM ADJUSTABLE BASE OPERATION, USE A GROUNDED, ELECTRICAL SURGE PROTECTION DEVICE (NOT INCLUDED). FAILURE TO USE A SURGE PROTECTION DEVICE COULD COMPROMISE SAFETY OR CAUSE PRODUCT MALFUNCTION.

ELECTRICAL RATING

Electrical components are rated for 110/120 voltage, 60Hz, 100 watt.

ELECTRICAL GROUNDING

This product is equipped with a polarized or grounded electrical power cord. The power cord will only fit into a grounded, electrical surge protection device (not included) or a grounded electrical outlet.

WARRANTY WARNING

Do not open any control boxes, motors or remote control devices. The product warranty will be void if these components are tampered with. Do not attempt to alter component wiring or adjust or modify the structure of the product in any way or the warranty will be void. Any repair or replacement of base parts must be performed by authorized personnel.

LUBRICATION

This product is designed to be maintenance free. The lift motors are permanently lubricated and sealed—no additional lubrication is required. Do not apply lubricant to lift motor lead screws or any nylon nuts or the base may inadvertently creep downward from the elevated position.

PRODUCT RATINGS

The base lift motors are **not** designed for continuous use. Reliable operation and full life expectancy will be realized as long as the lift motor operation does not exceed five (5) minutes over a forty-five (45) minute period, or approximately 11% duty cycle. Any attempt to circumvent or exceed product ratings will shorten the life expectancy of the product and may void the warranty.

The recommended maximum weight (including mattress) is 650 lb (294 kg) distributed evenly across the base. This product is not designed to support or lift this amount in the head or foot sections alone. **Note: Exceeding the recommended weight restrictions could damage the base and void the warranty.**

For best performance, consumers should enter and exit the adjustable base with the base in the flat (horizontal) position. Avoid placing entire weight on head or foot section of the base, including when in the raised position. **DO NOT STAND ON BASE AT ANY TIME.**

UL (Underwriters Laboratories) recognized components.

CFR 1633 approved for use with most mattresses.

Assembled in USA.

ADVISORY

IMPORTANT INFORMATION

READ THE FOLLOWING INFORMATION CAREFULLY BEFORE USING THIS PRODUCT

SMALL CHILDREN / PETS WARNING

After the base is unboxed, immediately dispose of packaging material as it can smother small children and pets. To avoid injury, children or pets should not be allowed to play under or on the base. Children should not operate this base without adult supervision.

PACEMAKER WARNING

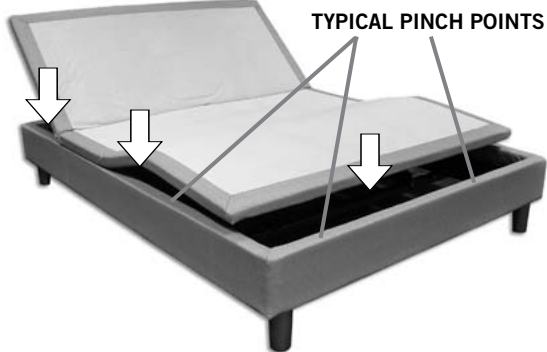
This product produces a vibrating sensation. It is possible that individuals with heart-assist pacemakers may experience a sensation similar to exercise. Consult physician for complete information.

PINCH POINT WARNING



DURING BASE OPERATION, GAPS (PINCH POINTS) ARE CREATED (ARROWS IN FIGURE 1). A CHILD, A PERSON'S LIMB, OR A PET CAN BECOME ENTRAPPED AT THESE LOCATIONS. DURING USE, AND WHEN BASE IS IN THE RAISED POSITION, ALWAYS KEEP GAP AREAS (PINCH POINTS) CLEAR AND KEEP ALL LIMBS ON TOP OF BASE. FAILURE TO FOLLOW THIS WARNING COULD RESULT IN SERIOUS INJURY OR DEATH.

FIGURE 1



HOSPITAL USE DISCLAIMER

This base is designed for in-home use only. It is not approved for hospital use and does not comply with hospital standards. Do not use this base with tent type oxygen therapy equipment, or use near explosive gases.

SERVICE REQUIREMENTS

Service technicians are not responsible for moving furniture, removing headboards and footboards or any items required to perform maintenance on the base. In the event the technician is unable to perform service due to lack of accessibility, the service call will be billed to the purchaser and the service will have to be rescheduled.

FCC COMPLIANCE

The equipment has been tested and found to comply with the limits for a Class B digital device, pursuant to Part 15 of the FCC Rules. These limits are designed to provide reasonable protection against harmful interference when the equipment is operated in a residential environment. This equipment generates, uses, and can radiate radio frequency energy and, if not installed and used in accordance with the instruction manual, may cause harmful interference to radio communications. However, there is no guarantee that interference will not occur in a particular installation. If this equipment does cause harmful interference to radio or television reception, which can be determined by turning off the equipment off and on, the user is encouraged to try to correct the interference by one or more of the following measures:

- Reorient or relocate the receiving antenna
- Increase the separation between the equipment and receiver.
- Connect the equipment into an outlet on a circuit different from that to which the receiver is connected.
- Consult the dealer or an experienced radio/TV technician for help.

Radio Frequency = 433MHz.

ACOUSTICS

LIFTING/LOWERING MECHANISMS

The lift/lower feature will emit a minimal humming sound during operation. This is normal.

During operation, the lift arm wheels make contact with the platform support of the base. This applies slight tension on the moving components and resonance is reduced to a minimum level. If excessive noise or vibration is experienced, reverse the movement action (up or down) of the base with the remote control. This should realign the base's activating mechanisms to the proper operational position.

MASSAGE OPERATION

The massage feature will emit a minimal tone during operation. This is normal. When the massage level is increased, motor resonance will intensify accordingly.

LOCATION ENVIRONMENT

The level of sound experienced during operation is directly related to the location environment. For example, when a base is located on a hardwood floor with the massage feature in operation, a vibrating tone will be audible. To minimize this resonance, place a piece of carpet, or rubber caster cups, under each leg or caster of the base.

It is possible to experience vibration or noise from headboard brackets, headboards or footboards (if used) if mounting bolts are not firmly tightened.

ASSEMBLY

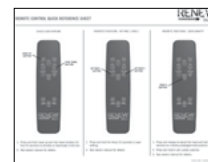
STEP 1

Before discarding any packing materials, open the adjustable base shipping carton and verify the following items are included:

- (4) 2 inch tall, small diameter adapters (for use with 7 inch tall, small diameter legs)
- (4) 2 inch tall, large diameter legs with cap (for use with decorative wood legs)
- (1) Remote Control
- (4) AAA Alkaline Batteries
- (1) Remote Control Holder
- (1) Power Down Device
- (1) Learn Switch
- (2) Headboard Bracket Assemblies (either Twin/ Split Cal King **OR** Queen, depending on base size)
- (1) Hardware Bag
- (1) Owners Manual
- (1) Warranty Activation Card
- (1) Remote Control Quick Reference Sheet
- (1) Quick Setup Guide



OWNERS MANUAL



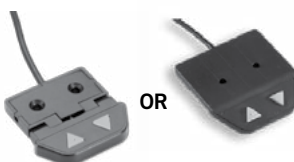
REMOTE CONTROL QUICK REFERENCE SHEET



WARRANTY ACTIVATION CARD



QUICK SETUP GUIDE



OR

LEARN SWITCH



4 - AAA ALKALINE BATTERIES



POWER DOWN DEVICE

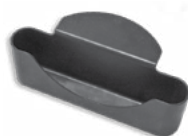
Store power down device and (2) 9-volt alkaline batteries in a safe place. Power down device is only to be used during power outage.



ADAPTER
(4 - 2" tall, small diameter)



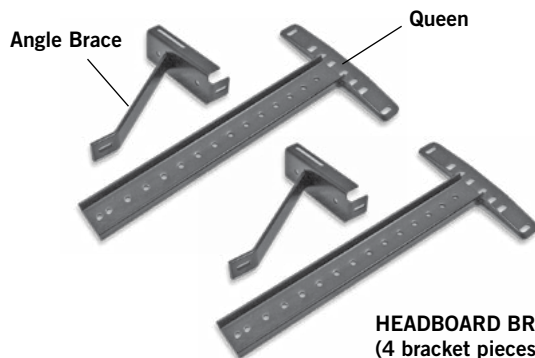
LEG
(4 - 2" tall, large diameter with cap)



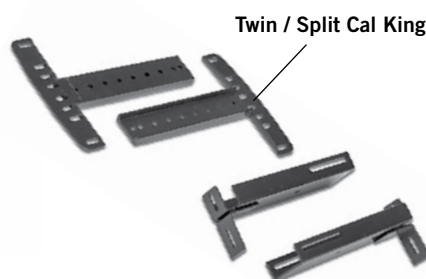
REMOTE CONTROL HOLDER



REMOTE CONTROL



Hardware Bag



Twin / Split Cal King

HEADBOARD BRACKET ASSEMBLIES AND HARDWARE BAG
(4 bracket pieces, hardware bag) *You will receive either Queen or Twin / Split Cal King. Queen headboard brackets are equipped with an angle brace.*

ASSEMBLY

STEP 2

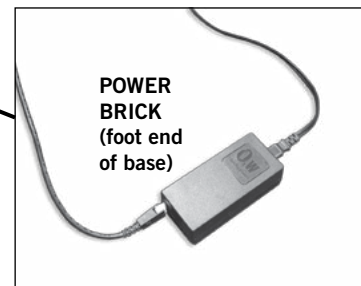
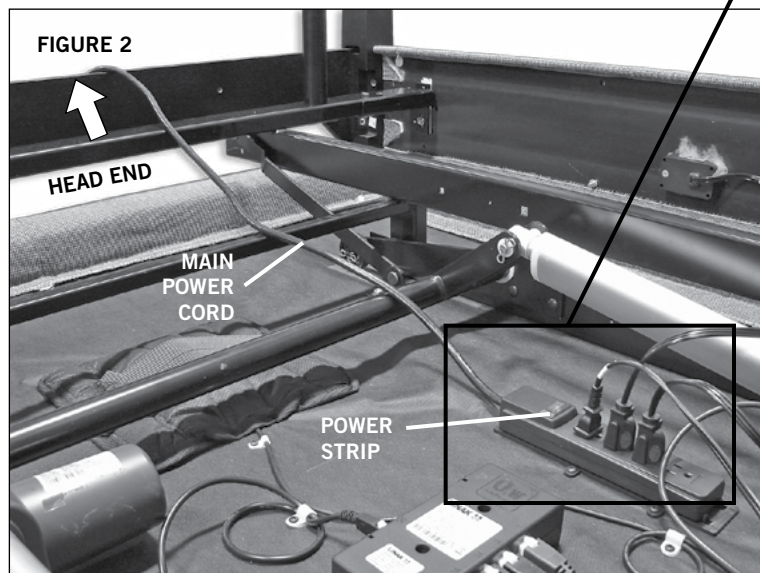
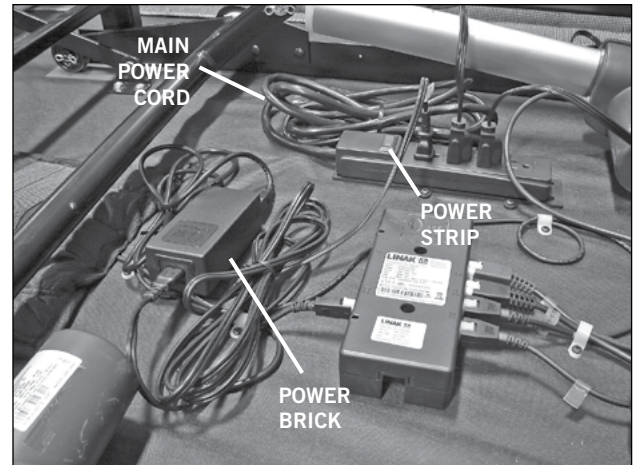
Take learn switch out of hardware box and place in corner of base.

Remove hardware box.

While base is still in carton, verify power strip is switched ON.

Uncoil main power cord and extend out head end of base
(**FIGURE 2**).

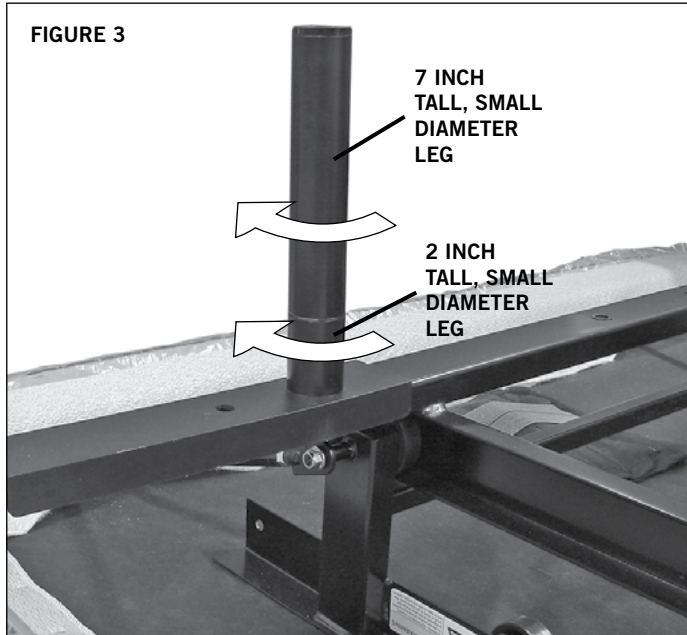
Uncoil power brick cords and place power brick in corner of base
(**FIGURE 2**).



ASSEMBLY

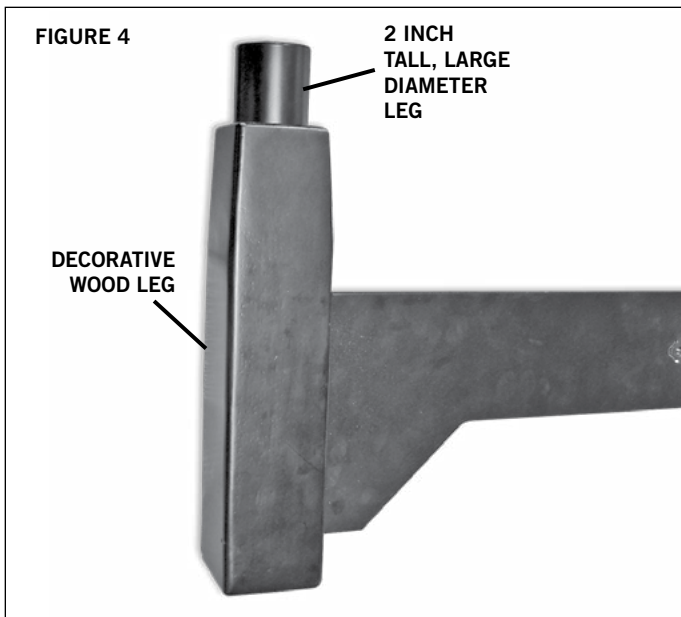
STEP 3

If additional leg height is required, install 2" tall, small diameter adapters with 7" tall, small diameter leg. Insert adapter between leg bracket and leg (**FIGURE 3**). **NOTE: 2 inch tall, small diameter adapters screw into the frame only. 7 inch tall, small diameter legs screw into 2 inch tall, small diameter legs. CAUTION: DO NOT USE 2" LEG ADAPTER BY ITSELF AS THIS MAY DAMAGE PRODUCT OR FLOOR SURFACE.**



STEP 4

If using 2" tall, small diameter adapters, also install 2 inch tall, large diameter legs into the bottom of each of the (4) decorative wood legs (**FIGURE 4**).



ASSEMBLY



WARNING

AT LEAST TWO PEOPLE ARE RECOMMENDED FOR HANDLING AND MOVING ADJUSTABLE BASE AFTER IT IS ASSEMBLED.

ALWAYS MOVE BASE IN THE FLAT POSITION.
ALWAYS LIFT FROM THE SIDES OF THE BASE, WHEN POSSIBLE.
ATTEMPT TO MOVE BASE WITHOUT SLIDING, WHEN POSSIBLE.

STEP 5

Carefully, turn base over so it is right side up.

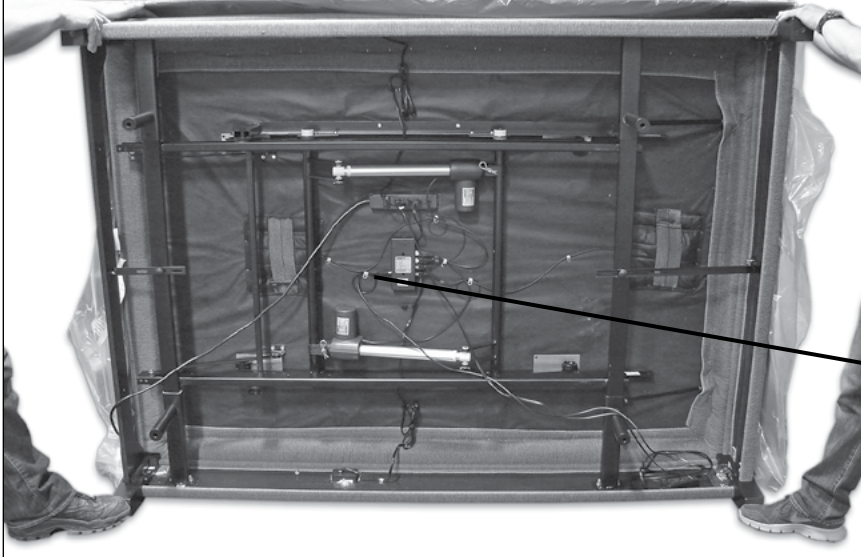
- a. With base in carton, grasp a pickup point (such as head/foot panel or metal component) and turn base onto its side (**FIGURES 5 and 6**).

FIGURE 5



- b. Brace base by placing foot against bottom two (2) wooden legs (**FIGURE 6**). Grasp a pickup point (such as head/foot panel or metal component) and turn base so it is resting on its legs (**FIGURES 6 and 7**). **Caution: Be careful not to set base on foot.**

FIGURE 6



LEARN SWITCH
(foot end of base)
factory connected
to control box



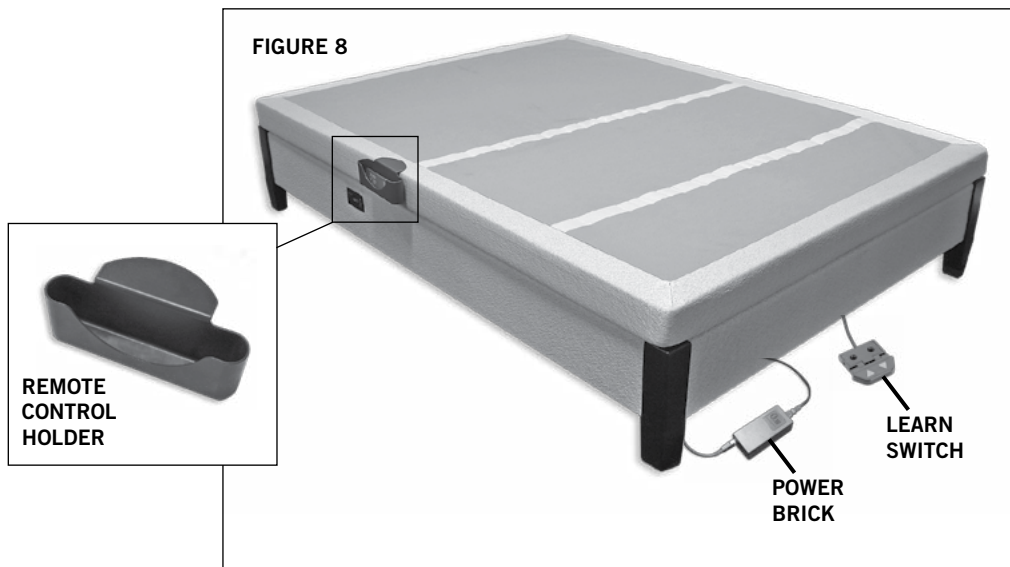
ASSEMBLY

- c. Remove remaining packaging from base (**FIGURE 7**). Extend power brick out foot end of base. Place learn switch on floor where it is easily accessible (**FIGURE 8**). **Note: Make sure all cords are clear of base and free of any pinch points.**



STEP 6

Attach remote control holder to base (**FIGURE 8**).

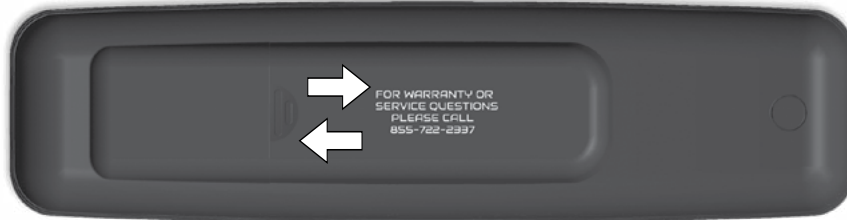


ASSEMBLY

STEP 7

Plug base into electrical power source. Install four (4) AAA alkaline batteries (included) in remote control (**FIGURE 9**). Operate remote control to verify base functions properly.

FIGURE 9



Note: If base is to be set up without a headboard, basic installation is now complete. If headboard is to be installed, proceed to Headboard Bracket Installation.

HEADBOARD BRACKET INSTALLATION



NOTE

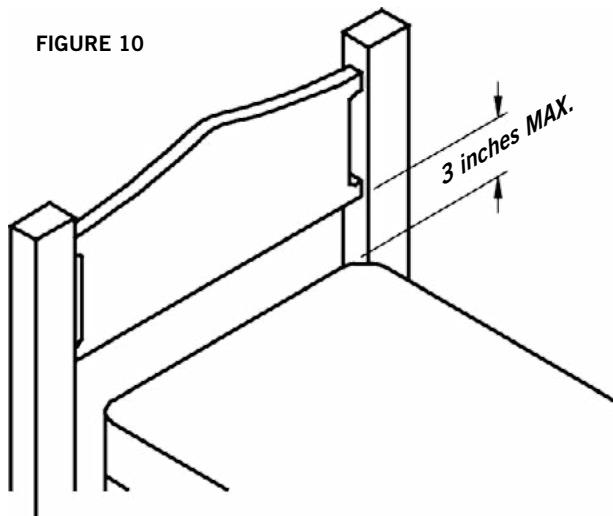
FAILURE TO FOLLOW HEADBOARD BRACKET INSTALLATION INSTRUCTIONS MAY CAUSE HEADBOARD BRACKET INTERFERENCE WITH BASE FOAM DURING BASE OPERATION. BASE FOAM OR BASE COVER DAMAGE COULD RESULT.



WARNING

IN ORDER TO AVOID A PERSON OR PET BEING CAUGHT IN THE SPACE REFERENCED IN FIGURE 10 WHILE THE BASE IS IN MOTION, THE BOTTOM OF THE HEADBOARD CROSS MEMBER MUST BE POSITIONED SO THAT THERE IS NO MORE THAN 3 INCHES (76.2mm) BETWEEN THE HEADBOARD AND THE TOP OF THE MATTRESS (FIGURE 10). **DO NOT EXCEED 3 INCHES (76.2mm)**. FAILURE TO FOLLOW THIS INSTRUCTION COULD RESULT IN SERIOUS PERSONAL INJURY OR DEATH.

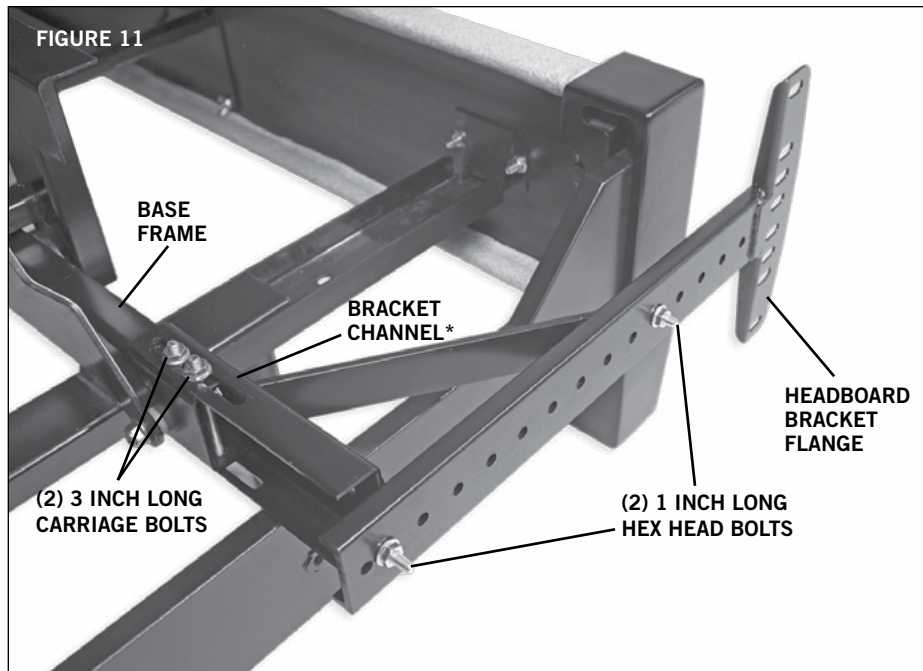
FIGURE 10



ASSEMBLY

STEP 8

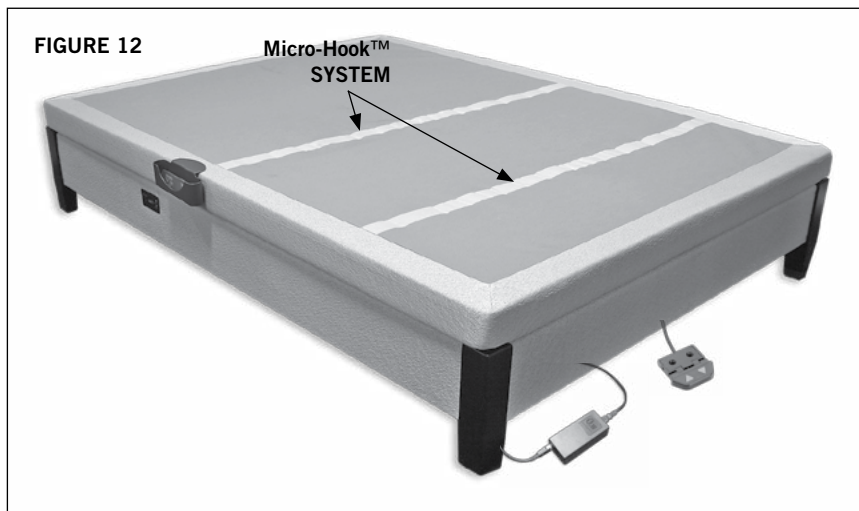
Install headboard brackets (**FIGURE 11**) to the base frame.



**Bracket channel shown is equipped with an angle brace. Not all bracket channels are equipped with an angle brace.*

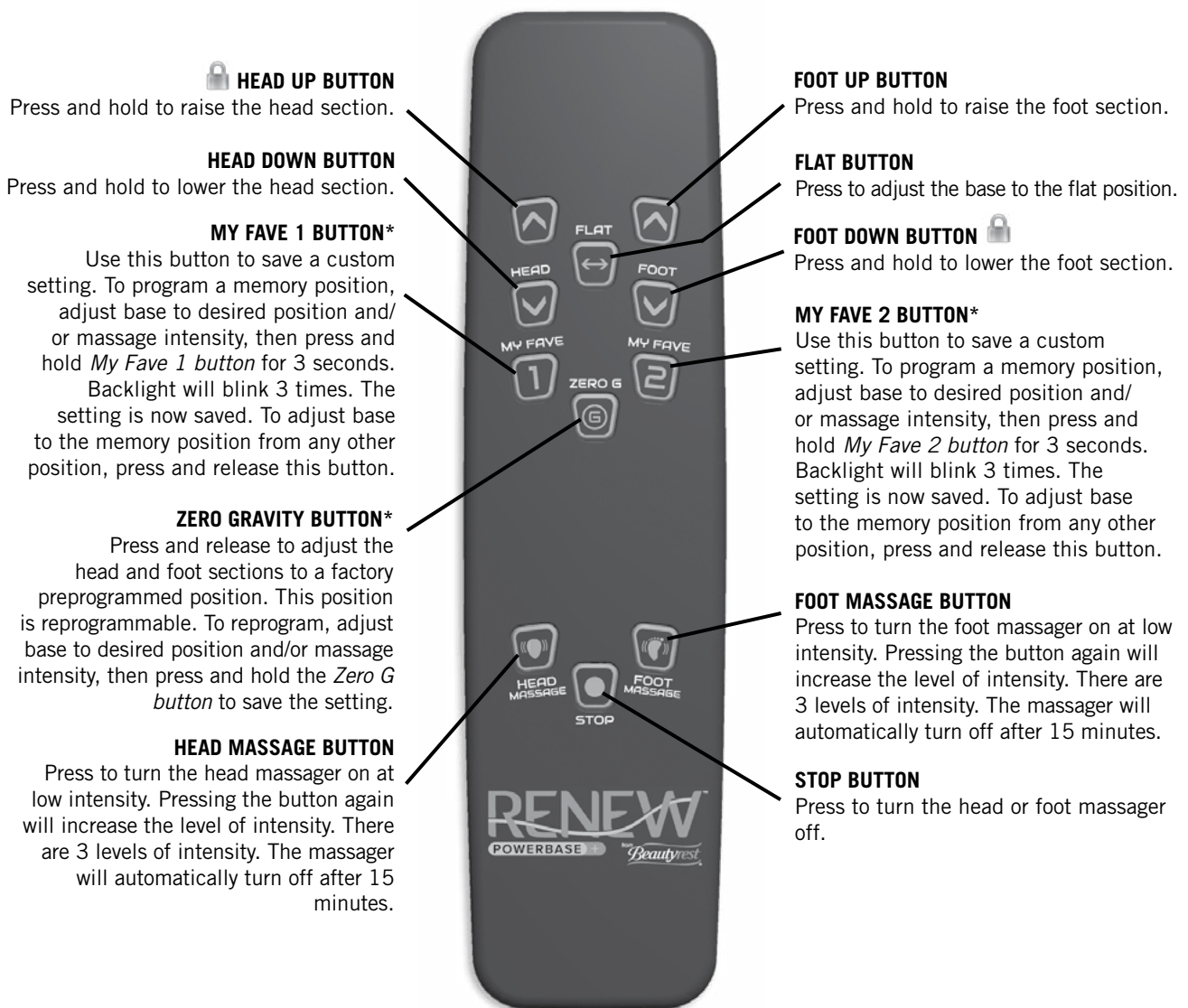
STEP 9

Install mattress on adjustable base (**FIGURE 12**). **NOTE: Micro-Hook™ system on top of base captivates mattress.**



Typical Renew™+ adjustable base installation is now complete.

Renew™ + REMOTE CONTROL FUNCTION



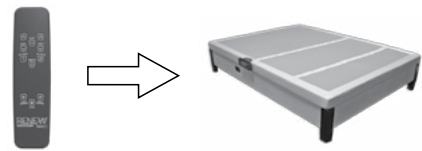
*To cancel the operation after movement has started, press any button on the remote control.

CHILD LOCK INSTRUCTIONS

1. Press and hold *head up* and *foot down* buttons for five (5) seconds. Backlight will blink five (5) times.
Child lock feature is now activated. When any button is pressed on remote control while child lock feature is active, backlight will blink and remote control will not function.
2. To remove child lock feature, repeat Step 1.
3. If Step 2 does not work, remove batteries from remote control and reinstall.

Renew™+ REMOTE CONTROL PROGRAMMING (1 remote control - 1 base)

Program One Remote to Operate One Base - Bases are factory programmed to operate as one remote control to one base. If reprogramming is required, perform the following numbered procedure. *If programming fails, initiate the programming procedure a second time.*

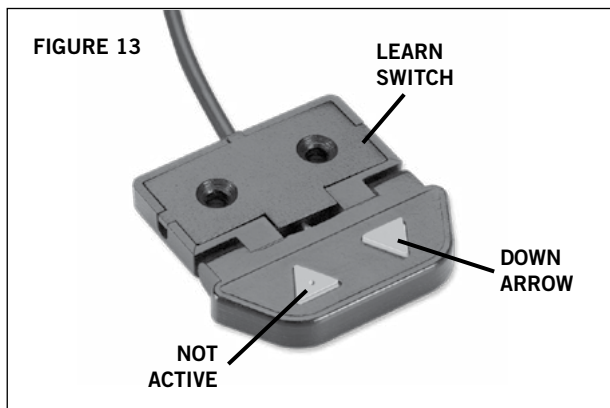


STEP 1

Plug the base into the electrical power source.

STEP 2

Locate the learn switch (**FIGURE 13**).



STEP 3

Press the *down arrow* on the learn switch (**FIGURE 13**).

STEP 4

While holding in the *down arrow*, press and hold the *foot up button* on the remote control for 5 seconds, then release both the *down arrow* and the *foot up button* (**FIGURE 14**).

STEP 5

Press either the *head* or *foot button* on the remote control to verify base functions.



FIGURE 14

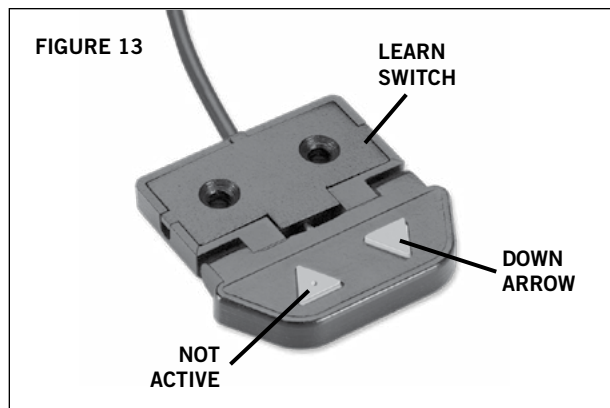
Program One Remote to Operate Two Bases - Bases are factory programmed to operate individual bases. To synchronize bases, perform the following numbered procedure. *If programming fails, initiate the programming procedure a second time.*

STEP 1

Plug base 1 into the electrical power source.

STEP 2

Locate the learn switch for base 1 (**FIGURE 13**).



STEP 3

Press the *down arrow* on the learn switch (**FIGURE 13**).

STEP 4

While holding in the *down arrow*, press and hold the *foot up button* on the remote control for 5 seconds, then release both the *down arrow* and the *foot up button* (**FIGURE 14**).

STEP 5

Press either the *head* or *foot button* on the remote control to verify base functions.

STEP 6

Repeat procedure substituting base 2 for base 1.

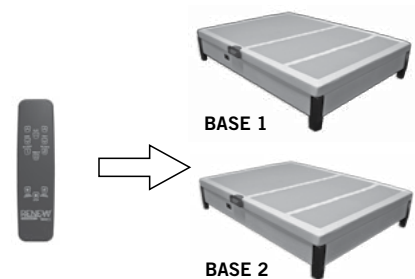
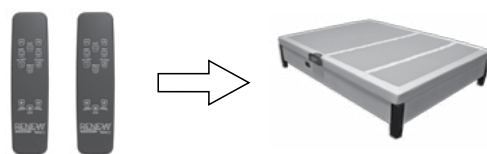


FIGURE 14

Program Two Remotes to Operate One Base - Bases are factory programmed to operate individual bases. To program both remotes to operate one base, perform the following numbered procedure. *If programming fails, initiate the programming procedure a second time.*

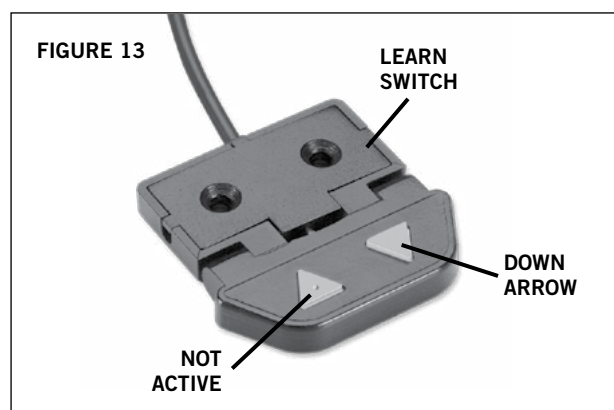


STEP 1

Plug the base into the electrical power source.

STEP 2

Locate the learn switch (**FIGURE 13**).



STEP 3

Press the *down arrow* on the learn switch (**FIGURE 13**).

STEP 4

While holding in the *down arrow*, press and hold the *foot up button* on remote control 1 for 5 seconds, then release both the *down arrow* and the *foot up button* (**FIGURE 14**).

STEP 5

Press either the *head* or *foot button* on remote control 1 to verify base functions.

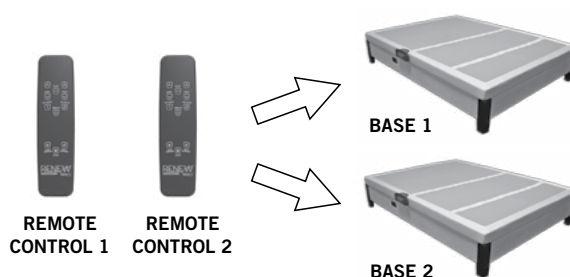
STEP 6

Repeat procedure substituting remote control 2 for remote control 1.



FIGURE 14

Program Two Remotes to Operate Two Bases - Bases are factory programmed to operate individual bases. To program one remote to be dedicated to one base, perform the following numbered procedure. *If programming fails, initiate the programming procedure a second time.*

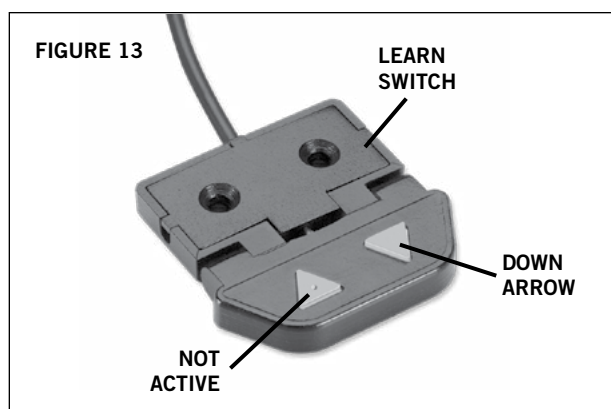


STEP 1

Plug base 1 into the electrical power source.

STEP 2

Locate the learn switch for base 1 (**FIGURE 13**).



STEP 3

Press the *down arrow* on the learn switch (**FIGURE 13**).

STEP 4

While holding in the *down arrow*, press and hold the *foot up button* on remote control 1 for 5 seconds, then release both the *down arrow* and the *foot up button* (**FIGURE 14**).

STEP 5

Press either the *head* or *foot* button on remote control 1 to verify base functions.

STEP 6

Repeat procedure substituting remote control 2 for remote control 1 and base 2 for base 1.



FIGURE 14

POWER DOWN OPERATION

To lower base to the flat position during an electrical power outage, complete the following procedure:

NOTE

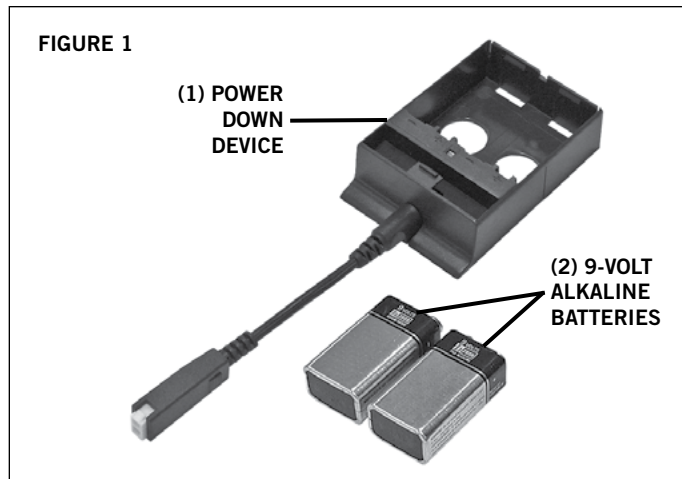
FOR EMERGENCY USE ONLY. BATTERIES ARE *NOT* TO BE USED FOR NORMAL OPERATION OF BASE. STORE POWER DOWN DEVICE AND (2) 9-VOLT ALKALINE BATTERIES IN A SAFE PLACE.

STEP 1

Verify power supply is unplugged from electrical power source.

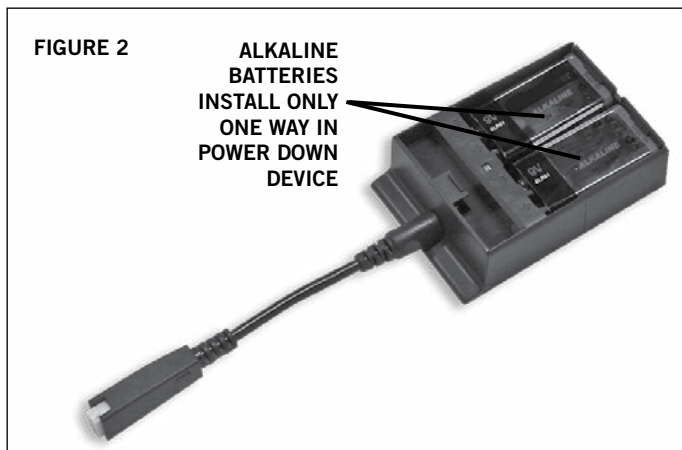
STEP 2

Locate (1) power down device and two (2) 9-volt alkaline batteries (**FIGURE 1**).



STEP 3

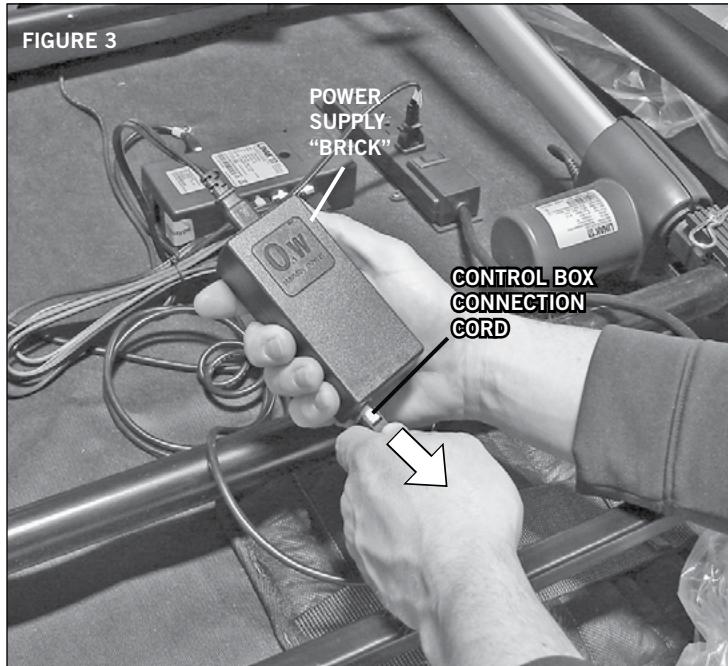
Install (2) 9-volt alkaline batteries in power down device (**FIGURE 2**).



POWER DOWN OPERATION

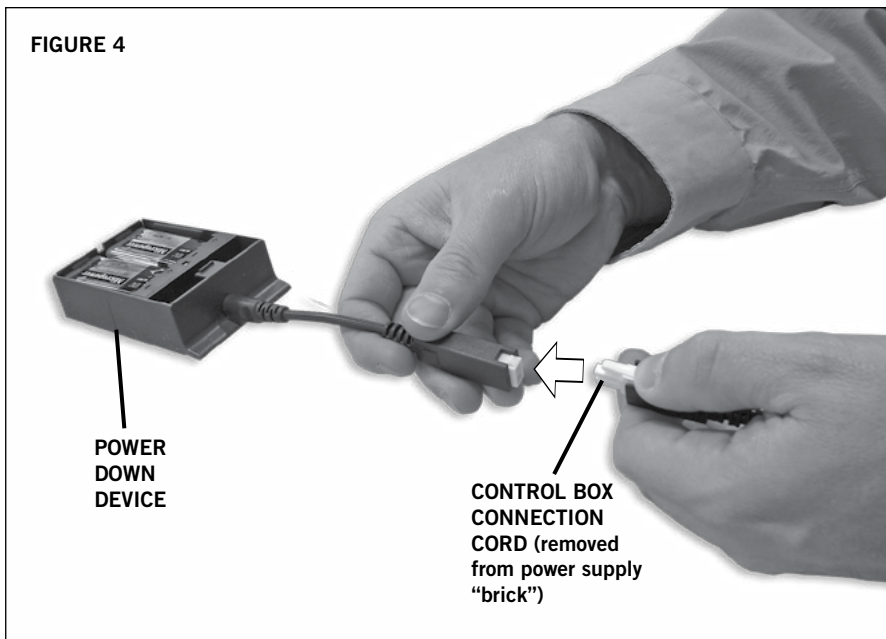
STEP 4

Push tab in on control box connection cord and pull out to remove control box connection cord from power supply “brick” (**FIGURE 3**).



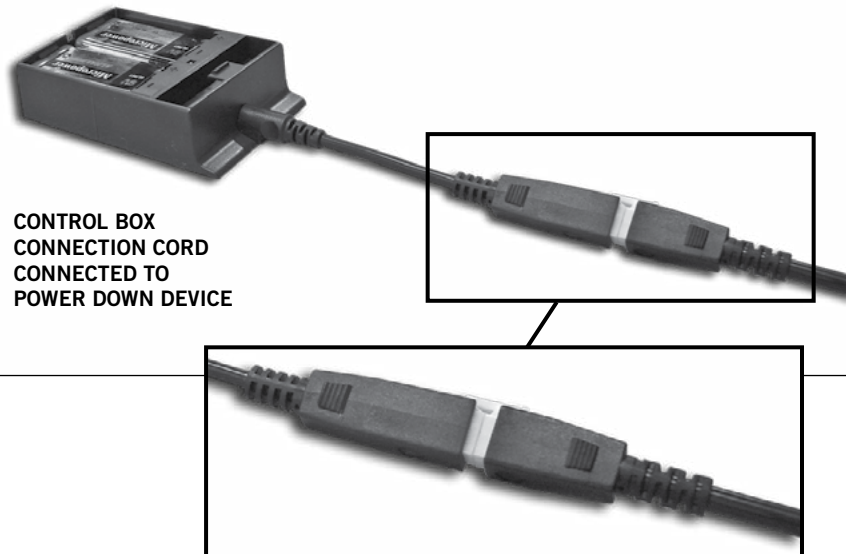
STEP 5

Connect control box connection cord to power down device (**FIGURES 4 and 5**).



POWER DOWN OPERATION

FIGURE 5



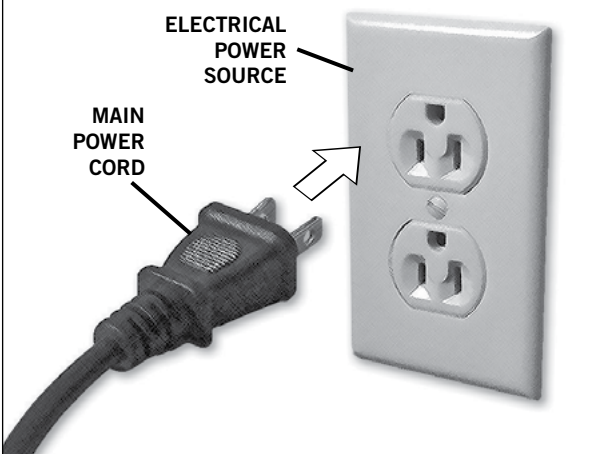
STEP 6

Press the FLAT BUTTON on the remote control until the base is in the flat position. BASE WILL MOVE TO THE FLAT POSITION VERY SLOWLY. **Note: Batteries in the power down device will only work for one use, then will need to be replaced.**

STEP 7

Reconnect control box connection cord to power supply “brick” and plug main power cord into electrical power source (**FIGURE 6**).

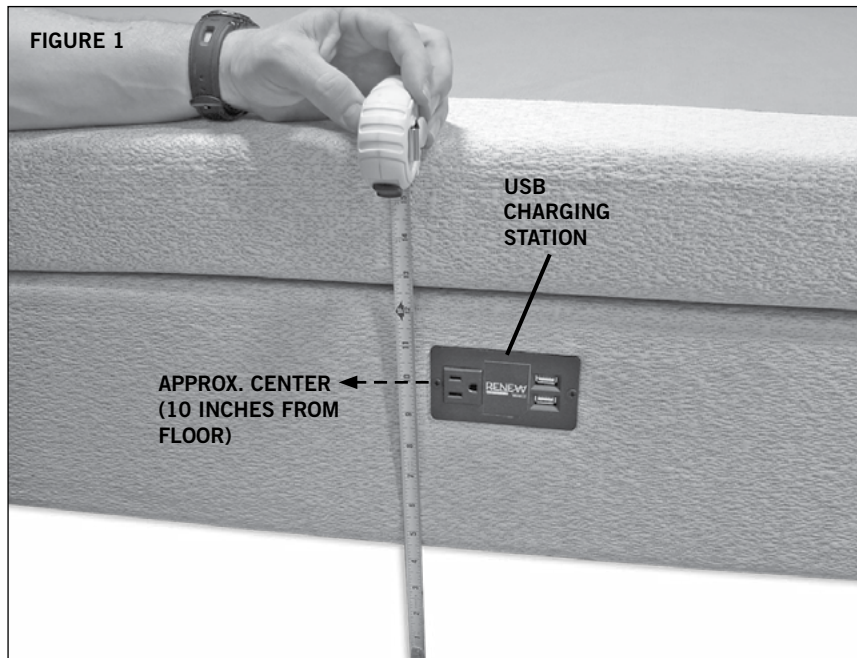
FIGURE 6



When power is restored from outage, base is ready to resume normal operation.

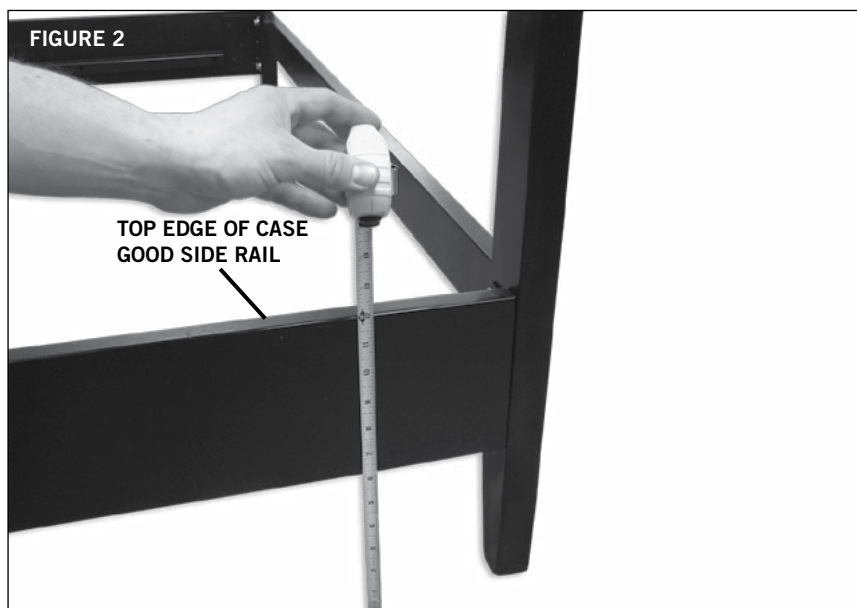
USB STATION RELOCATION (when installing adjustable base into case good)

The approximate center of the USB charging station on a Renew™+ assembled base with 7 inch legs is approximately 10 inches from the floor (**FIGURE 1**).



STEP 1

Measure the distance from the floor to the top edge of the case good side rail to determine if access to the USB charging station will be obstructed by the case good side rail (**FIGURE 2**).



USB STATION RELOCATION (when installing adjustable base into case good)

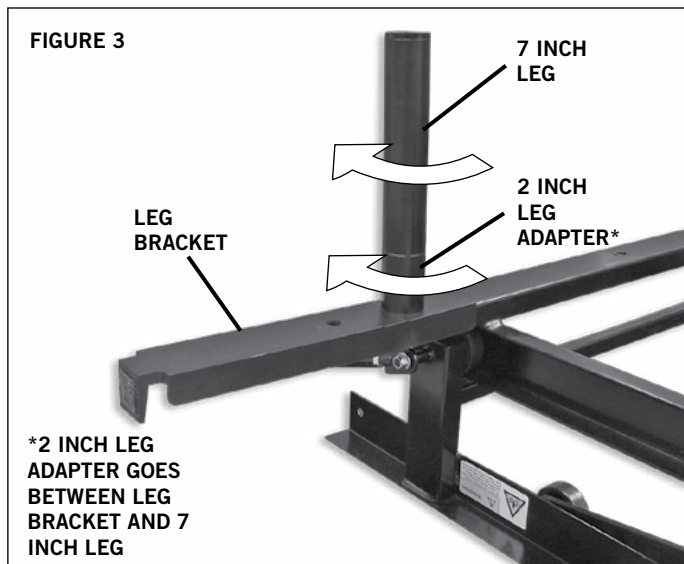
STEP 2

If access is obstructed, either raise the location of the USB charging station (**PROCEDURE A**) or lower the location of the USB charging station (**PROCEDURE B**).

PROCEDURE A

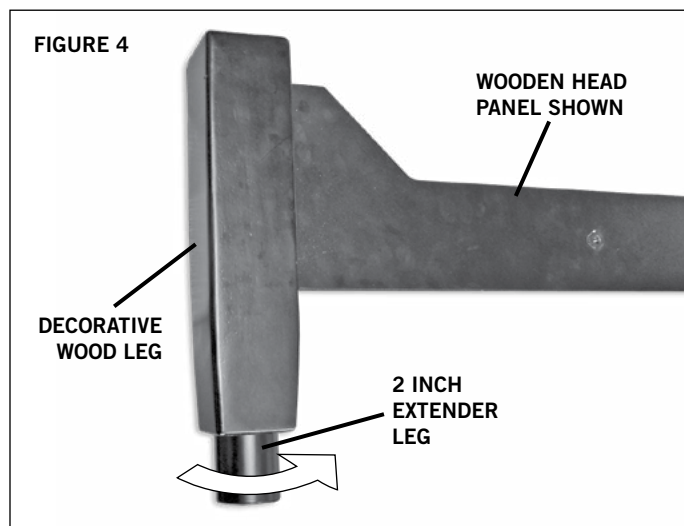
To raise the location of the USB charging station 2 inches:

- Install (4) 2 inch leg adapters to existing 7 inch legs (see Renew™+ Quick Setup Guide for installation instructions) (**FIGURE 3**). **Note: This provides 2 inches added height so the USB charging station is positioned above the case good side rails.**



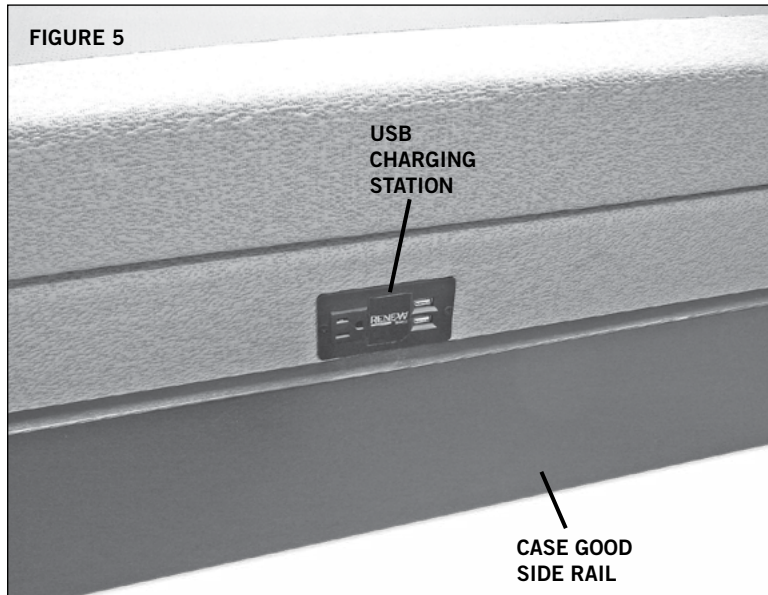
NOTE: If base is fully assembled, side, head, and foot panels will require removal / reassembly.

- The added height will create space between decorative wood legs and floor. Install 2 inch extender legs (sold separately) into the bottom of each of the (4) decorative wood legs (**FIGURE 4**).



USB STATION RELOCATION (when installing adjustable base into case good)

- c. Verify access to USB charging station is not obstructed (**FIGURE 5**).

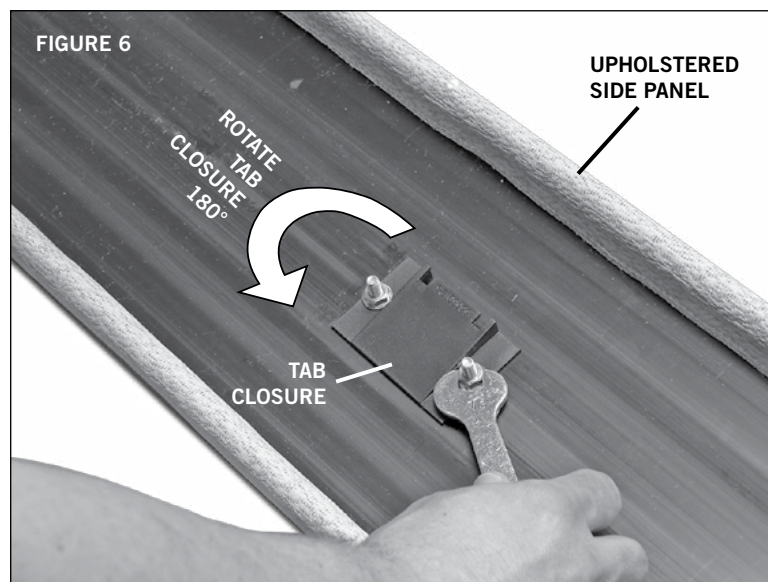


Procedure A is complete.

PROCEDURE B

To lower the location of the USB charging station 2.5 inches:

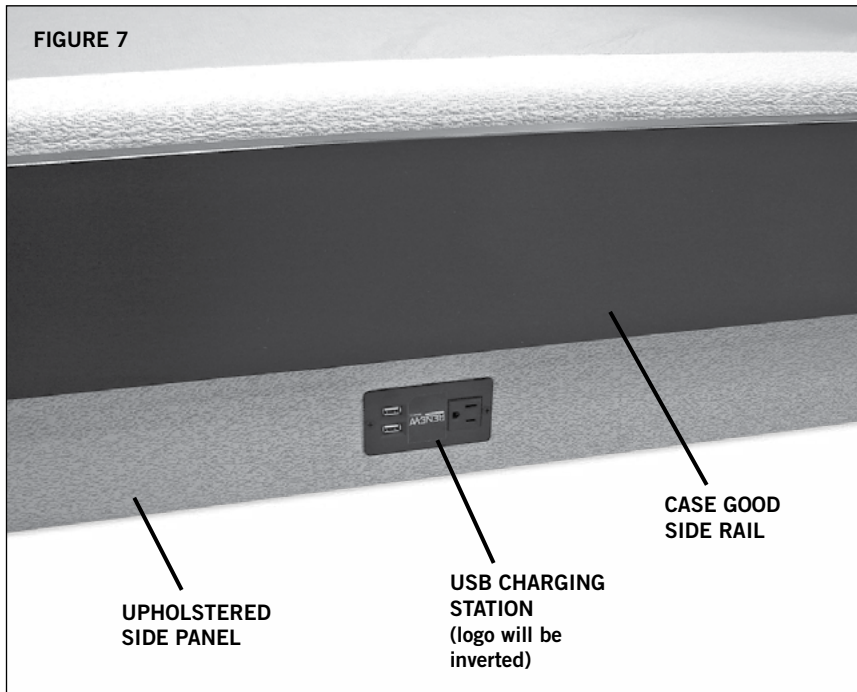
- Remove both upholstered side panels.
- On each upholstered side panel, unscrew the (2) tab closures, then rotate the tab closures 180°, then reattach tab closures to upholstered side panel (**FIGURE 6**).



NOTE: If base is fully assembled, side, head, and foot panels will require removal / reassembly.

USB STATION RELOCATION (when installing adjustable base into case good)

- c. Reinstall upholstered side panels on opposite of adjustable base from which they were removed.
- d. Verify access to USB charging station is not obstructed (**FIGURE 7**).



Procedure B is complete.

TROUBLESHOOTING

In the event the adjustable base fails to operate, investigate the symptoms and possible solutions provided in the chart below:

SYMPTOM	SOLUTION
No features of the base will activate.	<ul style="list-style-type: none"> • Program the remote control (see <i>Remote Control Programming</i> section of this manual for programming procedures). • Unplug power cord, wait 30 seconds and plug in to reset electronic components. • Electrical circuit breaker may be tripped. Check electrical service breaker box to verify. • Defective surge protection device or electrical outlet. Test outlet by plugging in another working appliance. • Verify power down device unplugged from base after usage. • Verify childlock is not activated (see <i>child lock instructions</i> on page 13).
Head or foot section will elevate, but will not return to the horizontal (flat) position.	<ul style="list-style-type: none"> • Base mechanism may be obstructed. Elevate base and check for obstruction. Remove obstruction. • Head section may be too close to the wall. • Headboard may be too close the edge of the mattress. Verify a 1.5" (38.1mm) to 2" (50.8mm) distance between headboard brackets and mattress. Adjust if required.
Excessive massage motor noise.	<ul style="list-style-type: none"> • Verify headboard brackets were removed during installation. Remove headboard brackets if still attached to the underneath side of base. • If base is located on hard surface flooring, place carpet pieces or rubber caster cups under each leg or caster of the base. (See accessory sheet, included with this product, for rubber caster cup order information.) • Elevate the head or foot section a short distance (with the remote control) to realign the lift/lower mechanisms with the base support platform. • Verify that base is not positioned against a wall, nightstand, or other object that may cause vibration or noise. • If base is installed over a base frame, verify massage motors are not causing base frame (or base frame components) to vibrate. • Verify that headboard attachment hardware is tightened firmly (if used).
Zero Gravity or My Favorites functions will not operate.	<ul style="list-style-type: none"> • Refer to page 13 of the owners manual for programming instructions.
Decorative wooden legs "float" (do not touch floor).	<ul style="list-style-type: none"> • Locate (4) attachment points where side panels fasten to metal side brackets. Loosen (2) nuts (7/16" wrench included) at each attachment point. Lower surround assembly until wooden legs contact floor. Tighten nuts.

1 YEAR, 3 YEAR AND 25 YEAR LIMITED WARRANTY

In this warranty: “**Adjustable base**” means the adjustable bed foundation sold by L&P to the dealer. The “adjustable base” does not include the mattress. “**L&P**” means Leggett & Platt, Incorporated. “**Purchaser**” and “**You**” both mean the consumer who is the original purchaser of this adjustable base made by L&P. This warranty is not transferrable. “**Warranty Commencement Date**” means either (i) the date You purchased a new and unused L&P adjustable base or (ii) the date of manufacture of this adjustable base if You purchased an L&P adjustable base that has been used as floor or display model. L&P warrants this adjustable base to You on the terms and over the reducing periods of time set out below. All warranty claims require notice from You to be given to L&P in the manner set out below, and to be received by L&P inside the applicable warranty time period.

1ST YEAR FULL WARRANTY

For the first year from the Warranty Commencement Date, your adjustable base is warranted against non-excluded defects in L&P's workmanship or materials. During the first year from the Warranty Commencement Date, L&P will repair or replace (at no cost to You) any defective adjustable base part, and L&P will pay all authorized labor and transportation costs associated with the repair or replacement of any parts found to be defective.

2ND & 3RD YEAR LIMITED WARRANTY

During the second and third year from the Warranty Commencement Date, L&P will replace any adjustable base part found to be defective and not excluded by this warranty. You are responsible to pay all service and transportation costs related to the costs of receiving and installation of the new part.

4TH YEAR TO END OF 25TH YEAR LIMITED WARRANTY

Starting in the fourth year from the Warranty Commencement Date and through to the end of the 25th year from the Warranty Commencement Date, L&P will replace steel and mechanical base parts found to be defective and not excluded by this warranty. **This warranty does not cover any electronics, electrical components, drive motors or massage motors.** You are responsible to pay all service and transportation costs related to receiving and installation of the new part and a portion of the cost of the replacement steel and mechanical part, based on the number of months that the base has been owned by you since the fourth anniversary of the Warranty Commencement Date. By the end of the 25th year, no portion of the replacement cost is covered by L&P. You will be required to pay $\frac{1}{22}$ nd of the then current replacement cost of the part multiplied by the number of years past the third year from the Warranty Commencement Date. This portion is calculated using the following formula: Cost of the part divided by 22 [being the number of years in years 4 to 25 inclusive], multiplied by the number of years you have owned the base since the end of the first 3 years. For example, if you make a claim for a part eligible for this warranty in the 5th year since the Warranty Commencement Date, you would be responsible for paying: \$100 part cost divided by 22, multiplied by 2 = \$9.09.

ADDITIONAL TERMS AND CONDITIONS

This warranty requires notice to be given to L&P of any claim for repairs or replacement parts.

EXCLUSIONS:

This warranty does not apply; (a) to any damage caused by You; (b) if there has been any repair or replacement of adjustable base parts by an unauthorized person; (c) if the adjustable base has been mishandled (whether in transit or by other means), subjected to physical or electrical abuse or misuse, or otherwise operated in any manner inconsistent with the operation and maintenance procedures outlined in the Owner's Manual and this warranty; (d) to damage to mattresses, fabric, cables, electrical cords or items supplied by dealers (contact the dealer for warranty information on these items); (e) if there has been any modification of the adjustable base **without prior written consent by L&P**; or (f) to costs for unnecessary service calls, including costs for in-home service calls solely for the purpose of educating You about the adjustable base or finding a satisfactory power connection.

This warranty will be void if either the recommended weight restriction is not followed (refer to the advisory section of the Owner's Manual) or if You sell or give or transfer the base to another person.

Any repairs to or replacement to Your adjustable base or its components under the terms of this limited warranty does not extend the applicable warranty from the Warranty Commencement Date. This time limitation may not apply in some jurisdictions, including the Province of Quebec.

The decision to repair or to replace defective parts under this warranty shall be made, or cause to be made, by L&P at its option and in its sole discretion.

Continued on next page...

1 YEAR, 3 YEAR AND 25 YEAR LIMITED WARRANTY

Repair or replacement shall be the sole remedy of the Purchaser. There shall be no liability on the part of L&P for any special, indirect, incidental, or consequential damages or for any other damage, claim, or loss not expressly covered by the terms of this warranty.

This limited warranty does not include reimbursement for inconvenience, removal, installation, setup time, loss of use, shipping, or any other costs or expenses. L&P and its service technicians will not be responsible for moving furniture or any other items not attached to the adjustable base in order to perform service on the adjustable base.

It is the sole responsibility of You to provide adequate space and accessibility to the adjustable base. In the event that the technician is unable to perform service due to lack of accessibility, the service call will be billed to You and the service will have to be rescheduled.

L&P makes no other warranty whatever, express or implied, and all implied warranties of merchantability and fitness for a particular purpose are disclaimed by L&P and excluded from this agreement.

Some American States do not allow the exclusion or limitation of incidental or consequential damages, so the above limitation or exclusion may not apply to You.

This warranty gives You specific legal rights, and You may also have other rights, which may vary from jurisdiction to jurisdiction. This warranty is valid in all 50 American States, the District of Columbia, Puerto Rico, and all 10 Provinces and 3 Territories of Canada.

For customer service under this limited warranty, give notice to L&P by mail, phone, email or online to the addresses set out below:

Leggett & Platt, Incorporated
PO Box 668
Lexington, North Carolina 27293

toll free phone: 1.855.722.2337
online: lpadjustablebases.com
email: accustomerservice@leggett.com

For French Canadian Customer Service, call 1.877.452.2665

**PLEASE DO NOT CONTACT YOUR RETAIL DEALER
OR ANY OTHER SERVICE PERSONNEL**



NATIONWIDE CUSTOMER SERVICE toll free: (855) 722-2337

© 2014 Simmons Bedding Company. All Rights Reserved.