

Operator's Manual

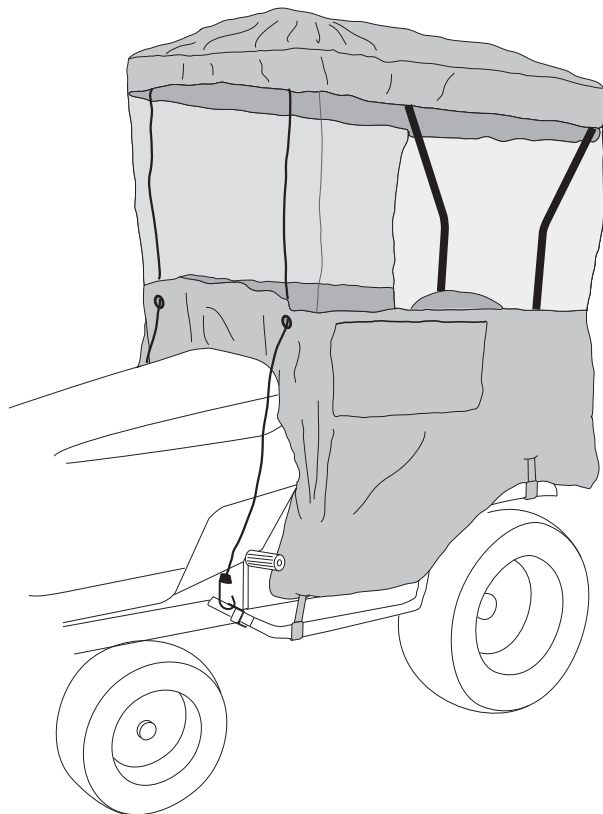
CRAFTSMAN®

SNOW CAB

Model No. 486.24278



DO NOT RETURN TO STORE
For Missing Parts or Assembly
Questions Call 1-866-576-8388



CAUTION:

Before using this product, read this manual and follow all Safety Rules and Operating Instructions.

- Safety
- Assembly
- Operation
- Maintenance
- Parts

Sears Brands Management Corporation, Hoffman Estates, IL 60179 U.S.A.
www.sears.com/craftsman

PRINTED IN U.S.A.

FORM NO. 28119 (08/17/15)



SAFETY RULES



Any power equipment can cause injury if operated improperly or if the user does not understand how to operate the equipment. Exercise caution at all times, when using power equipment.

- This cab provides foul weather protection only. It does not provide protection against exhaust fumes, collision, rollover or other accidents.
- Read the snow cab and vehicle owner's manuals and know how to operate your vehicle before using the snow cab attachment.
- Be sure there is adequate ventilation when using the tractor and snow cab in confined areas.
- The snow cab will restrict your field of vision in some directions. Use extra caution when operating your tractor with the snow cab attached.
- Watch out for low tree limbs or other overhead obstructions that may not previously have interfered with operation of the tractor. The extra height of the snow cab may cause these objects to become obstacles.
- Check the area of operation thoroughly before using the tractor.



Look for this symbol to point out important safety precautions. It means — **Attention!! Become alert!! Your safety is involved.**

WARRANTY

CRAFTSMAN LIMITED WARRANTY

FOR ONE YEAR from the date of sale this product is warranted against defects in material or workmanship.

WITH PROOF OF SALE a defective part will be replaced free of charge. If a replacement part is unavailable, the product will be replaced with one of equal value.

For warranty coverage details to obtain free replacement, visit the web page: www.craftsman.com/warranty

This warranty does not cover expendable items that can wear out from normal use or deterioration within the warranty period, including but not limited to tires, belts, exterior finishes or product labels.

This warranty does not apply to a product that is damaged or altered through transportation, misuse, abuse, corrosion, accident, neglect modification or mishandling.

This warranty is void if this product is ever used while providing commercial services or if rented to another person.

This warranty gives you specific legal rights, and you may also have other rights which vary from state to state.

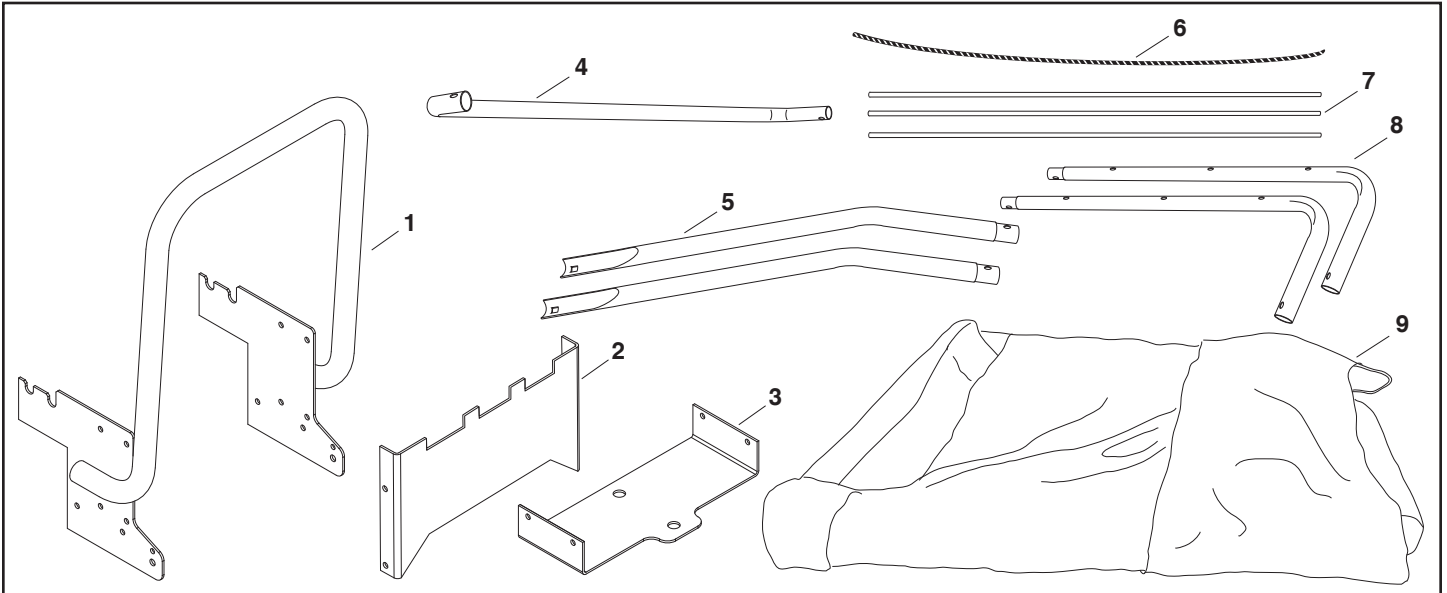
Sears Brands Management Corporation, Hoffman Estates, IL 60179

DO NOT RETURN TO STORE for Missing Parts or Assembly Questions

Call 1-866-576-8388 Attachment Hotline

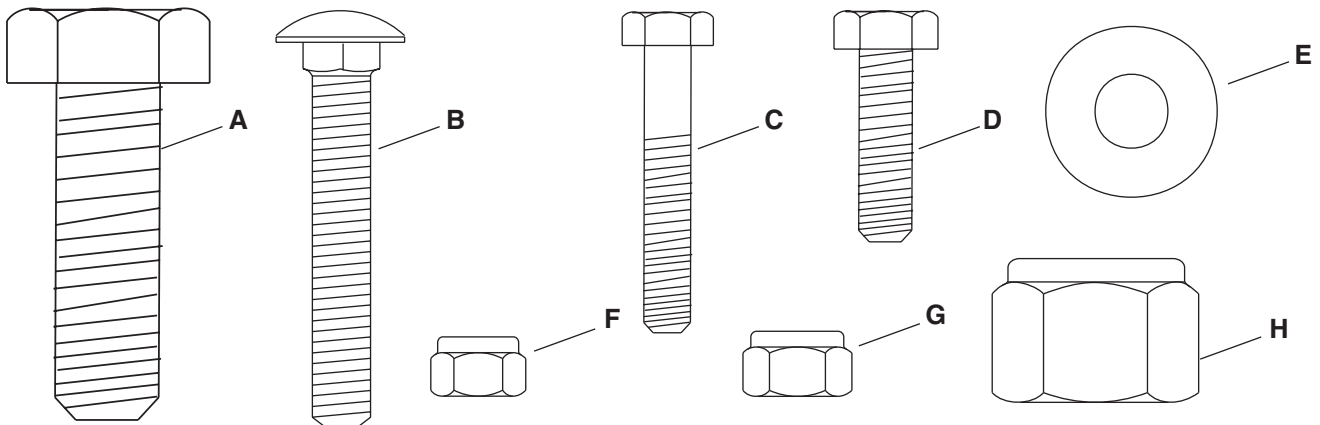
CARTON CONTENTS

- | | | | | | |
|----|-----------------|----|-------------------|----|------------------|
| 1. | Base Assembly | 4. | U-Tube | 7. | Support Rods (3) |
| 2. | Weight Bracket | 5. | Upright Tubes (2) | 8. | Top Tubes (2) |
| 3. | Drawbar Bracket | 6. | Rope | 9. | Vinyl Canopy |

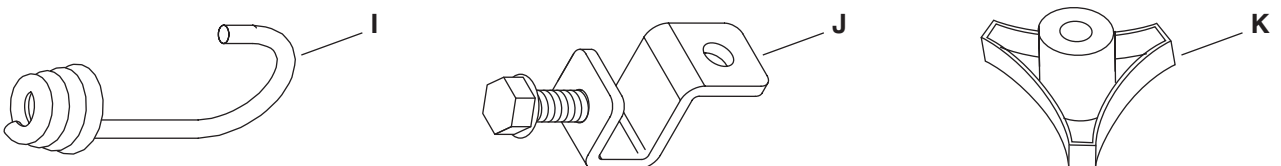


HARDWARE PACKAGE

SHOWN FULL SIZE



NOT SHOWN FULL SIZE



REF	QTY	DESCRIPTION	REF	QTY	DESCRIPTION
A	1	Hex Bolt, 5/8" x 1-3/4"	G	8	Nylock Nut, 5/16"
B	2	Carriage Bolt, 5/16 x 2"	H	1	Nylock Nut, 5/8"
C	4	Hex Bolt, 1/4 x 1-1/2"	I	4	Spiral Hook
D	8	Hex Bolt, 5/16" x 1"	J	2	Footrest Clamp
E	2	Flat Washer, 5/16"	K	2	Plastic Knob
F	4	Nylock Nut, 1/4"			

ASSEMBLY

LOCATE MODEL LABEL OF TRACTOR

- Look under your tractor seat and locate the serial number as shown. Refer to the chart below and check that your tractor is compatible.



COMPATIBLE MODEL NUMBERS

247.28906	247.28981
247.28980	247.28875
247.28672	247.20440
247.20442	247.20443
247.20444	247.20445

STEP 1: (SEE FIGURE 1)

- Assemble the drawbar bracket to the base assembly using four 5/16" x 1" hex bolts and 5/16" nylock nuts. See figure 3. Do not tighten yet.
- Attach the weight bracket to the base assembly using four 5/16" x 1" hex bolts and 5/16" nylock nuts.

Note: The weight bracket holds up to three suitcase type weights to improve traction. Purchase weights separately.

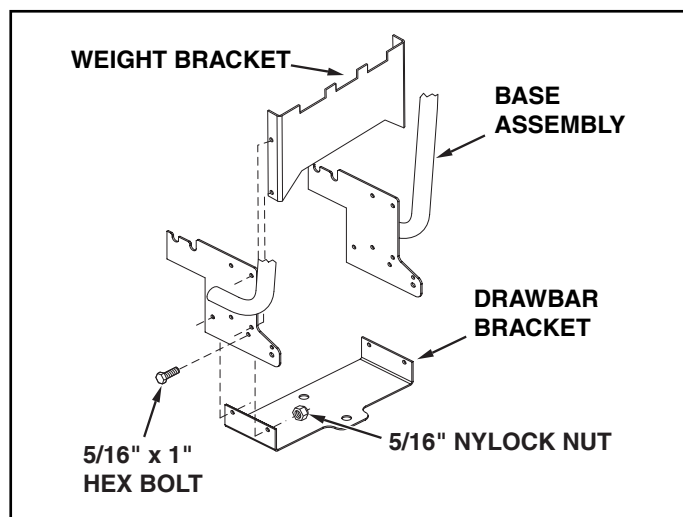


FIGURE 1

STEP 2: (SEE FIGURE 2)

- Hook the base assembly under the shoulder bolts on the sides the tractor frame using the front notches in the base assembly. Align the hole in the bottom of the base assembly with the hole in the tractor drawbar. Insert the 5/8" x 1-3/4" hex bolt and secure it with the 5/8" nylock nut.

Note: The seat may need to be tilted forward on some tractors to ease assembly.

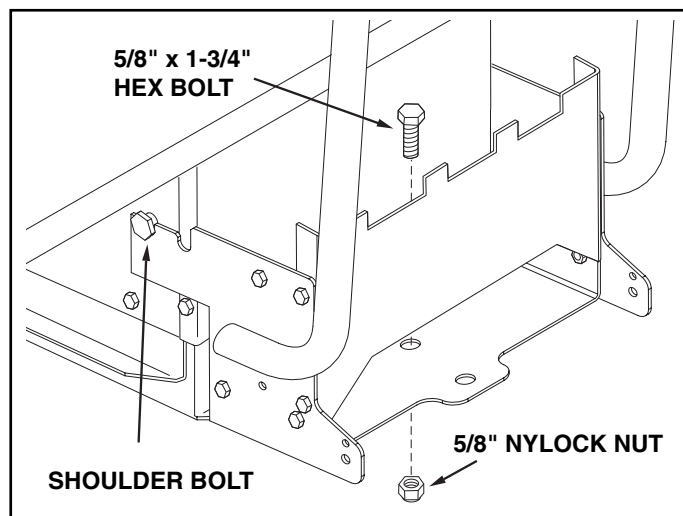


FIGURE 2

TOOLS REQUIRED FOR ASSEMBLY

- (2) 7/16" Wrenches
- (2) 1/2" Wrenches
- (1) 3/4" Wrench
- (2) 15/16" Wrenches

REMOVAL OF PARTS FROM TRACTOR

- Remove any rear mounted attachments which may be installed on your tractor
- Mark and save all removed parts.

STEP 3: (SEE FIGURE 3)

- Assemble the upright tubes to the base assembly using two 5/16-18 x 2" carriage bolts (from outside) and two 5/16" flat washers and plastic knobs (from inside).

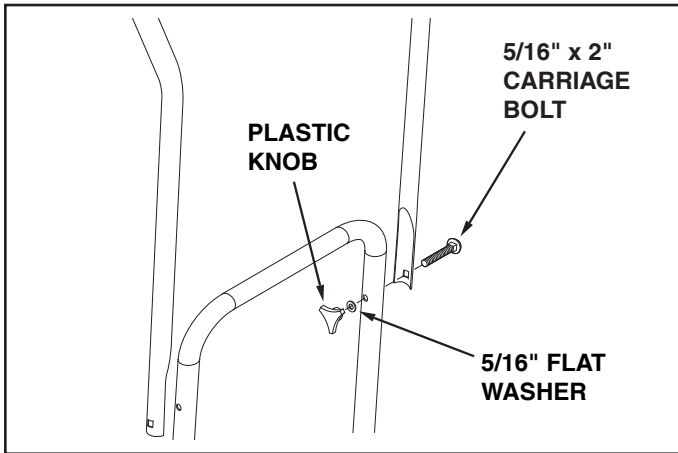


FIGURE 3

STEP 4: (SEE FIGURE 4)

- Assemble the top tubes to the upright tubes using two 1/4" x 1-1/2" hex bolts (from outside) and two 1/4" nylock nuts (inside). **Do not tighten yet.**
- Fit the front U-tube onto the top tubes. Fasten the tubes together using two 1/4" x 1-1/2" hex bolts (on outside) and two 1/4" nylock nuts (on inside). **Tighten all loose bolts.**
- Fit the three support rods into the holes in the top tubes, with the rods arching upward. **Do not over bend the rods when installing.**

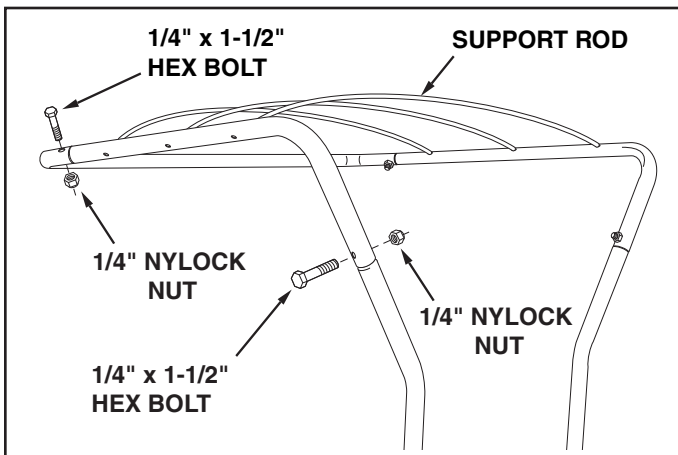


FIGURE 4

STEP 5: (SEE FIGURE 5)

- Install a footrest clamp with preassembled bolt onto the front edge of each footrest, with the bolt underneath the footrest.
- Raise the tractor's hood. Place the snow cab canopy onto the tubing frame, draping the front flap down in front of the tractor's dash panel. Lower the hood, trapping the front flap under the hood. Secure the sides of the canopy by fastening the elastic hooks to the bottom edge of the footrest and fender. Levers or handles on snowthrowers and snow blades should be located outside of the cab.

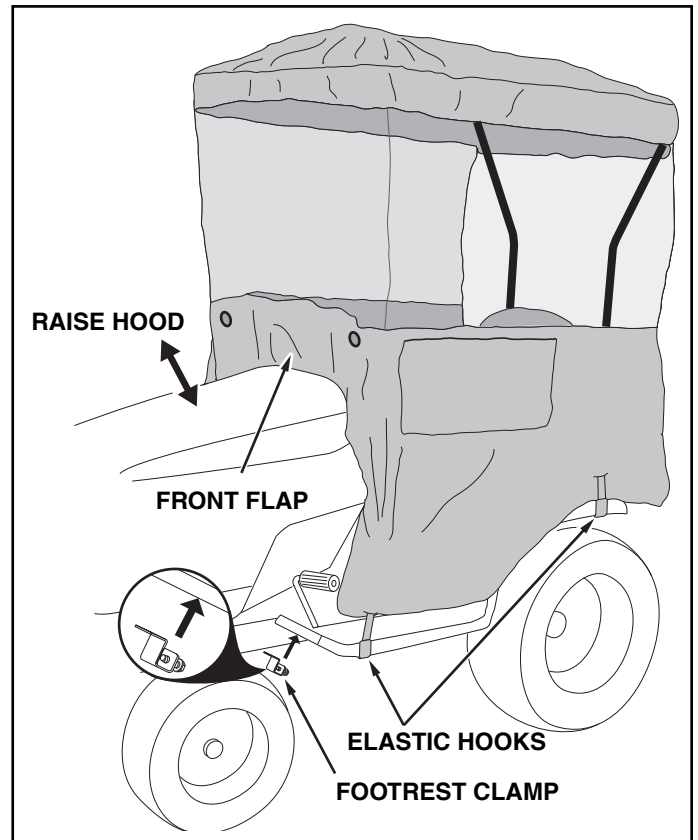


FIGURE 5

STEP 6: (SEE FIGURE 6)

- Assemble two spiral hooks into holes on top of u-tube at front of tubing frame.
- Insert ends of rope down through spiral hooks attached to u-tube and then insert ends through two grommets in front of canopy.

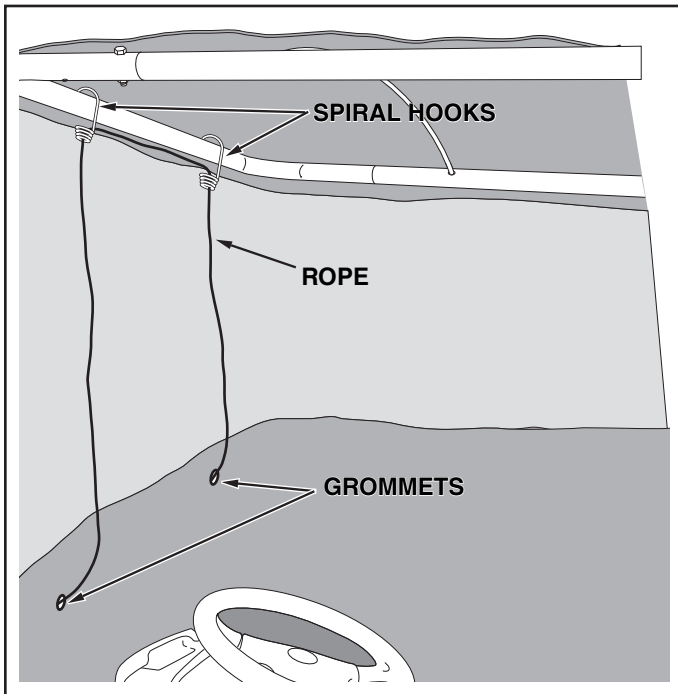


FIGURE 6

STEP 7: (SEE FIGURE 7)

- Insert one end of rope through a third spiral hook and tie a knot in end of rope.
- Assemble spiral hook with rope attached through hole in footrest clamp.
- Insert other end of rope through remaining spiral hook. Tie a knot in end of rope so that when hooked to other footrest clamp the rope is tight and canopy frame is stable.

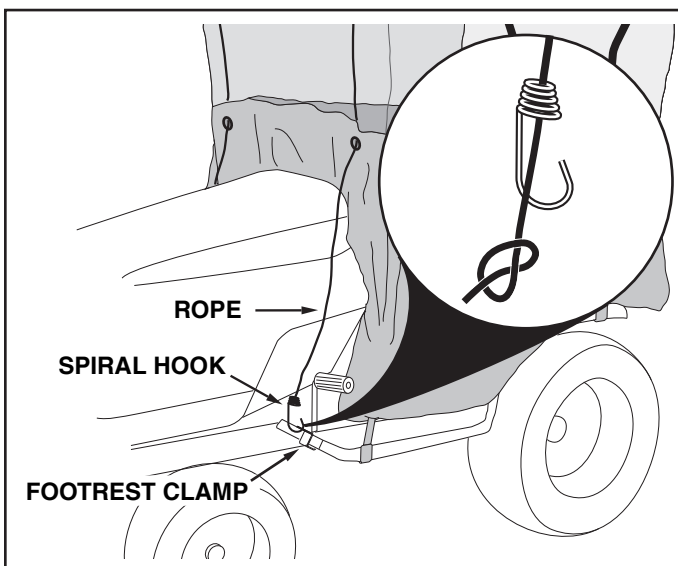


FIGURE 7

OPERATION

Read this owner's manual and safety rules before operating your tractor with the Snow Cab.



CAUTION: Watch out for low tree limbs and other overhead objects which may interfere with the snow cab.



CAUTION: This cab provides foul weather protection only. It does not provide protection against exhaust fumes, collision, rollover or other accidents.



CAUTION: Never transport the tractor in an open truck or open trailer while the snow cab is attached.

- Check the area of operation thoroughly before using the tractor with the snow cab. The added height of the snow cab and a reduced field of vision require extra caution during operation.
- Enter the snow cab on the left side at the rear. Unfasten the elastic hook at the bottom and the velcro fastener in the top in the rear corner.
- Operate outside controls on a snowthrower or snow blade through the access flaps in the sides of the canopy.
- Up to three suitcase type weights can be added to the weight bracket on the snow cab to increase traction of the rear tires.
- Remove the upper snow cab frame and canopy before you transport the tractor in an open truck or open trailer.

MAINTENANCE

- Before each use make a thorough visual check of the snow cab for any bolts and nuts which may have loosened. Retighten any loose bolts and nuts.
- The vinyl portion of the canopy can be washed using water only, or a mild liquid soap and water.
- The plastic windows should only be washed using running water, or a mild liquid soap and water. Wash the windows with your bare hands only. A cloth, sponge or brush will scratch the clear plastic.

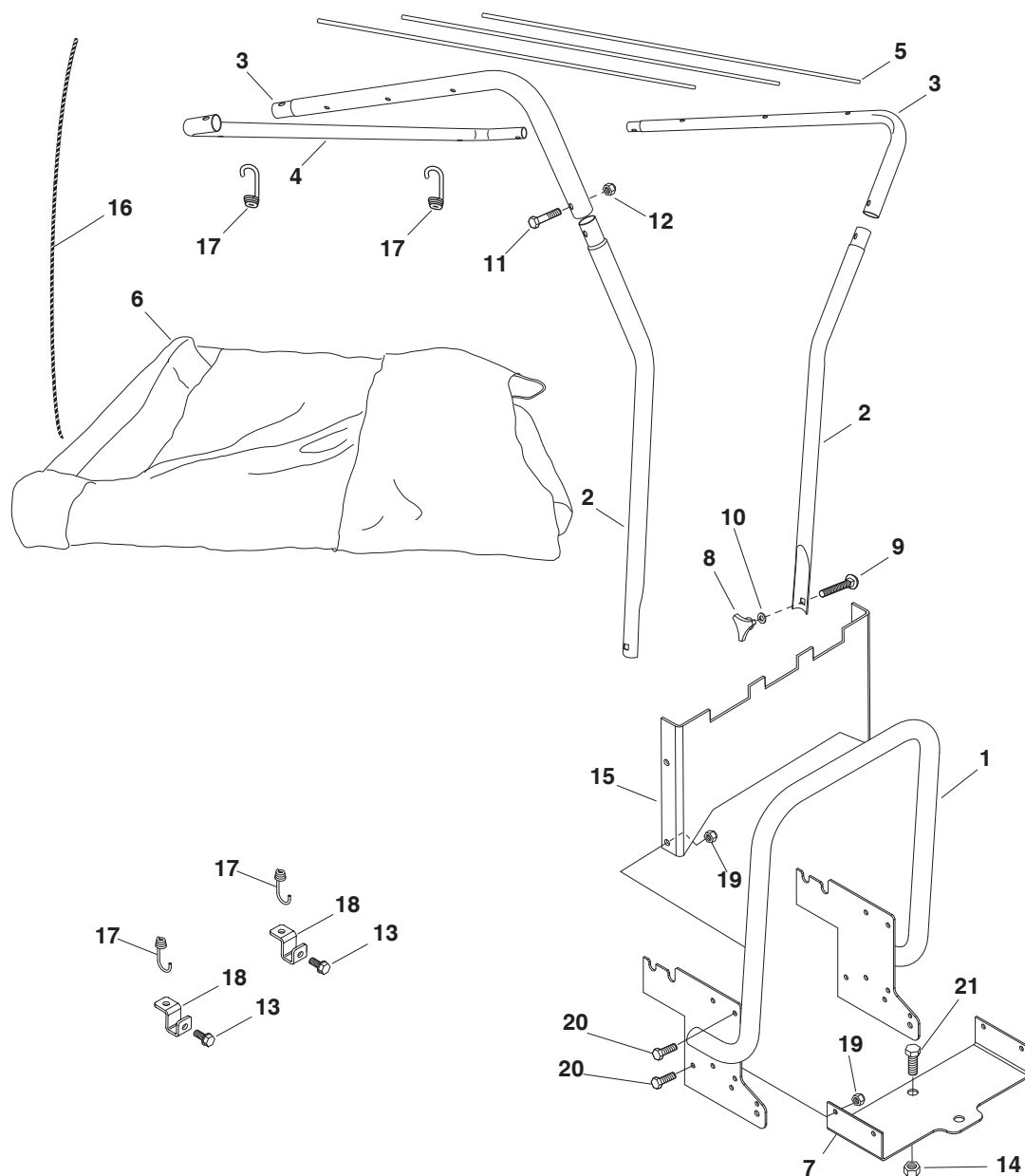
IMPORTANT: Never clean the windows when the plastic is dry. The clear plastic will scratch.

- Clean the vinyl canopy thoroughly and allow to dry before storing. Refer to the Cleaning section.
- Store the snow cab in a clean, dry area away from direct sun light.

REPAIR PARTS ILLUSTRATION

486.24278 SNOW CAB

To purchase repair parts, call 1-888-331-4569



REF	PART NO	QTY	DESCRIPTION	REF	PART NO	QTY	DESCRIPTION
1	64717	1	Base Assembly	12	47189	4	Nylock Nut, 1/4-20
2	25014	2	Upright Tube	13	46703	2	Hex Bolt, 5/16-18 x 3/4" Self Thd.
3	25013	2	Top Tube	14	41615	1	Hex Nut, 5/8-11 Nylock
4	25012	1	U-Tube	15	25703	1	Weight Bracket
5	25015	3	Support Rod	16	49017	1	Rope
6	48895	1	Vinyl Canopy	17	49016	4	Spiral Hook
7	25141	1	Drawbar Bracket	18	64802	2	Footrest Clamp
8	43720	2	Plastic Knob	19	47810	8	Nylock Nut 5/16-18
9	44977	2	Carriage Bolt, 5/16-18 x 2"	20	43063	8	Hex Bolt, 5/16-18 x 1"
10	43081	2	Flat Washer, 5/16"	21	47951	1	Hex Bolt, 5/8-11 x 1-3/4"
11	43648	4	Hex Bolt, 1/4-20 x 1-1/2"		28119	1	Owner's Manual

CRAFTSMAN®

Product questions or problems?

1-888-331-4569

Customer Care Hot Line

**Get answers to questions, troubleshoot problems,
order parts, or schedule repair service.**

Para respuestas a preguntas o problemas, y ordenar
piezas o pedir servicio para la reparación de su equipo.

To help us help you, register your product at www.craftsman.com/registration

Para poderte ayudar mejor, registra tu producto en www.craftsman.com/registration

Join the Craftsman Club today!

CRAFTSMAN CLUB®

www.craftsman.com/signup

**Receive exclusive member benefits including special pricing and offers,
project sharing, expert advice, and SHOP YOUR WAY REWARDS!**

Como miembro exclusivo, recibe diversos beneficios como ofertas, precios especiales, proyectos nuevos, consejos de expertos y nuestro programa de puntos SHOP YOUR WAY REWARDS!