



NK 12 SURROUND SOUND BAR

Home Theatre System



BLUETOOTH



2.1
CHANNEL
SURROUND



WIRELESS
SUB-WOOFER



HDMI®
HIGH-DEFINITION MULTIMEDIA INTERFACE
(ARC)



Optical
Input



Aux
Input x2

FEATURES

Wireless Subwoofer

Nakamichi's wireless module does away with cables running between the main unit and the subwoofer.

Instead, the subwoofer connects to a compact wireless module that communicates with the main unit.

Special Sound EQ Mode

You can select from 4 different sound modes – MOVIE, NEWS, MUSIC, and SPORTS - depending on the type of content you want to enjoy.

Active Speaker System

This unit features an Active Speaker System that provides high sound quality in a single slim unit.

This unit does not require any satellite loudspeakers or speaker cabling, which are normally associated with conventional surround sound systems.

Bluetooth Function

You can use connect a Bluetooth device to the sound bar and enjoy music with high quality stereo sound, all without wires!

SAFETY INFORMATION

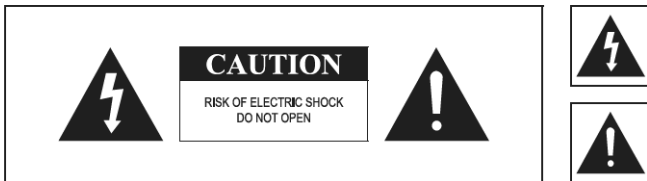
SAFETY WARNINGS

TO REDUCE THE RISK OF ELECTRIC SHOCK, DO NOT REMOVE THE COVER (OR BACK). NO USER-SERVICEABLE PARTS ARE INSIDE. REFER SERVICING TO QUALIFIED SERVICE PERSONNEL.

This symbol indicates "dangerous voltage" inside the product that presents a risk of electric shock or personal injury.

This symbol indicates important instructions accompanying the product.

WARNING: To reduce the risk of fire or electric shock, do not expose this appliance to rain or moisture.



CAUTION: TO PREVENT ELECTRIC SHOCK, MATCH WIDE BLADE OF PLUG TO WIDE SLOT, FULLY INSERT.

- This apparatus shall always be connected to a AC outlet with a protective grounding connection.
- To disconnect the apparatus from the mains, the plug must be pulled out from the mains socket, therefore the mains, plug shall be readily operable.

CAUTION

- Do not expose this apparatus to dripping or splashing. Do not put objects filled with liquids, such as vases on the apparatus.
- To turn this apparatus off completely, you must pull the power plug out of the wall socket. Consequently, the power plug must be easily and readily accessible at all times.

PRECAUTIONS

Ensure that the AC power supply in your house complies with the power requirements listed on the identification sticker located on the back of your product. Install your product horizontally, on a suitable base (furniture), with enough space around it for ventilation (3~4 inches, 7~10 cm). Make sure the ventilation slots are not covered. Do not place the unit on amplifiers or other equipment which may become hot. This unit is designed for continuous use. To fully turn off the unit, disconnect the AC plug from the wall outlet. Unplug the unit if you intend to leave it unused for a long period of time.

During thunderstorms, disconnect the AC plug from the wall outlet. Voltage peaks due to lightning could damage the unit.

Do not expose the unit to direct sunlight or other heat sources. This could lead to overheating and cause the unit to malfunction.

Protect the product from moisture (i.e. vases), and excess heat (e.g. a fireplace) or equipment creating strong magnetic or electric fields. Disconnect the power cable from the AC supply if the unit malfunctions. Your product is not intended for industrial use. This product is for personal use only.

Condensation may occur if your product has been stored in cold temperatures. If transporting the unit during the winter, wait approximately 2 hours until the unit has reached room temperature before using.

The batteries used with this product contain chemicals that are harmful to the environment.

Do not dispose of batteries in the general household trash.

IMPORTANT SAFETY INSTRUCTIONS

This product was designed and manufactured to meet strict quality and safety standards.

There are, however, some installation and operation precautions which you should be particularly aware of.

1. Read Instructions. All the safety and operating instructions should be read before the system is operated.
2. Retain Instructions. The safety and operating instructions should be retained for future reference.
3. Heed Warnings. All warnings on the appliances and in the operating instructions should be adhered to.
4. Follow Instructions. All operating and use instructions should be followed.
5. Cleaning. Unplug the appliance from wall outlet before cleaning. Do not use liquid cleaners or aerosol cleaners. Use a damp cloth for cleaning.
6. Attachments. Do not use attachments not recommended by the product manufacturer as they may cause hazards.
7. Water and Moisture. Do not use these appliances near water for example, near a bath tub, washbowl, kitchen sink, or laundry tub, in a wet basement, or near a swimming pool, and the like.
8. Accessories. Do not place these appliances on an unstable cart, stand, tripod, bracket, or table. The audio/video products may fall, causing serious injury to a child or adult and serious damage to the products. Use only with a cart, stand, tripod, bracket, or table recommended by the manufacturer, or sold with the appliances. Any mounting of the appliances should follow the manufacturer's instructions, and should use mounting accessories recommended by the manufacturer.
9. Ventilation. Slots and openings in the cabinet are provided for ventilation and to ensure reliable operation of the appliances and to protect them from overheating, and these openings must not be blocked or covered. The openings should never be blocked by

placing the products on a bed, sofa, rug, or other similar surface. This product should never be placed near or over a radiator or heat register. This product should not be placed in a built-in installation such as a bookcase or rack unless proper ventilation is provided or the manufacturer's instructions have been adhered to.

10. Power Sources. This product should be operated only from the type of power source indicated on the marking labels. If you are not sure of the type of power supply to your home, consult your appliance dealer or local power company.

11. Grounding or Polarization. This product is equipped with polarized alternating-current line plugs (plugs having one blade wider than the other). This plug will fit into the power outlet only one way. This is a safety feature. If you are unable to insert the plug fully into the outlet, try reversing the plug. If the plug should still fail to fit, contact your electrician to replace your obsolete outlet. Do not defeat the safety purpose of the polarized plug.

12. Power Cord Protection. Power-supply cord should be routed so that it is not likely to be walked on or pinched by items placed upon or against it, paying particular attention to cords at plugs, convenience receptacles, and the point where they exit from the appliances.

13. Lightning. For added protection for this audio/video product during a lightning storm, or when it is left un-attended and unused for long periods of time, unplug it from the wall outlet and disconnect the antenna or cable system. This will prevent damage to the product due to lightning and power-line surges.

14. Power Lines. An outside antenna system should not be located in the vicinity of overhead power lines or other electric light or power circuits, or where it can fall into such power lines or circuits. When installing an outside antenna system, extreme care should be taken to keep from touching such power lines or circuits as contact with them might be fatal.

15. Overloading. Do not overload wall outlets and extension cords as this can result in a risk of fire or electric shock.

16. Object and Liquid Entry. Never push objects of any kind into this product through openings, as they may touch dangerous voltage points or short out parts that could result in a fire or electric shock. Never spill liquid of any kind on this audio/video product.

17. Servicing. Do not attempt to service this product yourself, as opening or removing covers may expose you to dangerous voltage or other hazards. Refer all servicing to qualified service personnel.

18. Damage Requiring Service. Unplug this product from wall outlets and refer servicing to qualified service personnel under the following conditions:

- a. When the power supply cord or plug is damaged.
- b. If liquid has been spilled, or objects have fallen into the product.
- c. If the product has been exposed to rain or water.
- d. If the product does not operate normally by following the operating instructions. Adjust only those controls that are covered by the operating instructions, as an improper adjustment of other controls may result in damage and will often require extensive work by a qualified technician to restore the product to its normal operation.
- e. If the product has been dropped or the cabinet has been damaged.
- f. When the product exhibits a distinct change in performance this indicates a need for service.

19. Replacement Parts. When replacement parts are required, be sure the service technician has used replacement parts specified by the manufacturer or that the parts have the same characteristics as the original part. Unauthorized substitutions may result in fire, electric shock or other hazards.

CAUTION: Danger of EXPLOSION if battery is incorrectly replaced.

Replace only with the same or equivalent type. (CR2025)

WARNING: Do not expose batteries or battery pack to excessive heat such as sunshine, fire or similar.

20. Safety Check. Upon completion of any service or repairs to this product, ask the service technician to perform safety checks to determine that the products are in proper operating condition.

21. This product is not intended for use outdoors.

PLEASE TAKE INVENTORY

Please check to ensure you have everything in your Nakamichi® NK 12 Sound Bar Home Theater system carton.

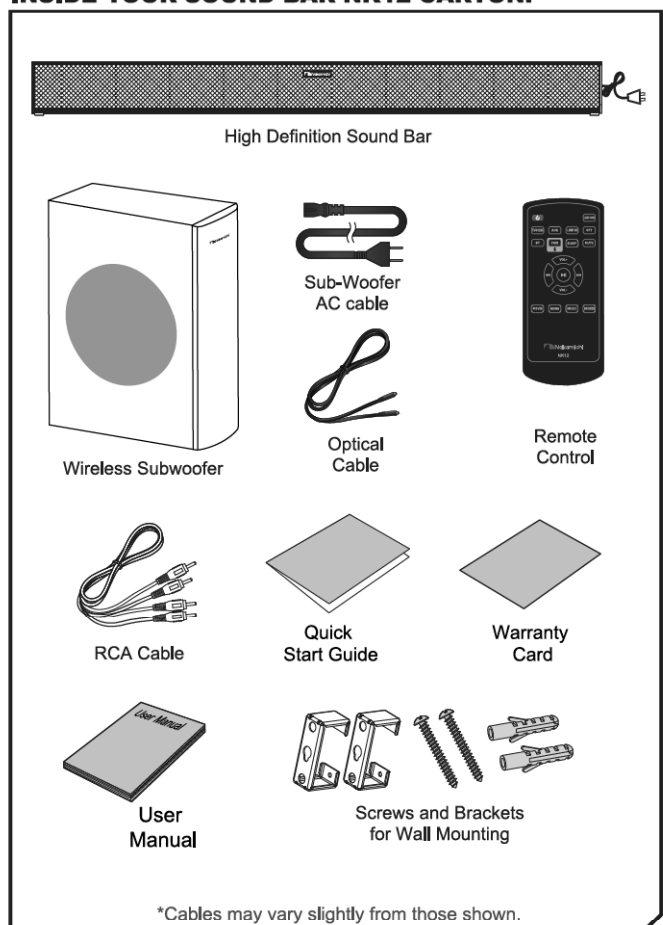
Inside, you should find:

1. High Definition Sound Bar
2. Wireless Subwoofer
3. Remote Control (Battery Included)
4. Subwoofer AC Cable
5. RCA Cable
6. Optical Cable
7. Quick Start Guide
8. User's Manual
9. Warranty Card
10. Screws & Brackets for wall mounting

Important Note:

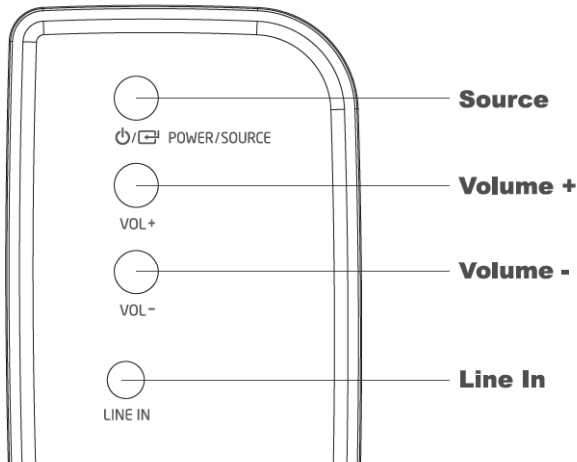
If anything is missing or damaged, or if your Nakamichi NK 12 sound bar fails to operate, please notify your dealer immediately. We recommend keeping your original carton and packing materials in case you need to ship the unit in the future.

INSIDE YOUR SOUND BAR NK12 CARTON:



DESCRIPTIONS & FUNCTION

● SIDE PANEL



Source: Press the source input button until your connection type is displayed. (AUX or Optical, for example). Push repeatedly to cycle through input sources (HDMI in TV (ARC), Aux, Line-in, Optical and BT for example).

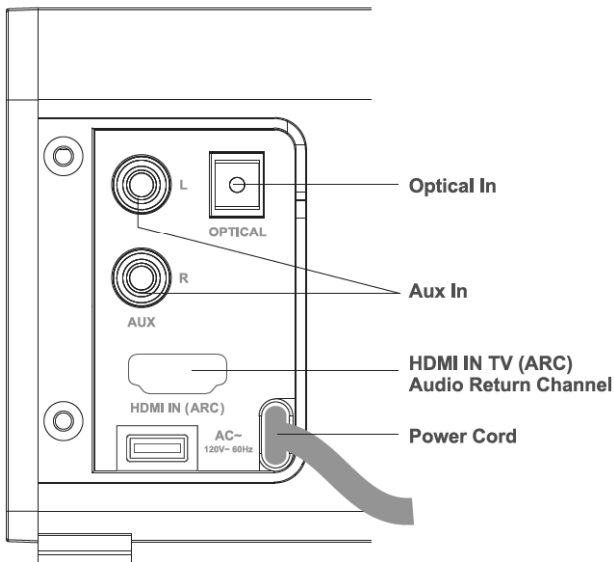
Volume +: Press to increase system volume.

Volume -: Press to decrease system volume.

Line In: Connect to the 3.5mm AUX-IN (Analog) output of an external device, e.g. TV, DVD or Blu-ray player.

System Standby: Press and hold the source button and puts the sound bar in standby mode.

● BACK PANEL



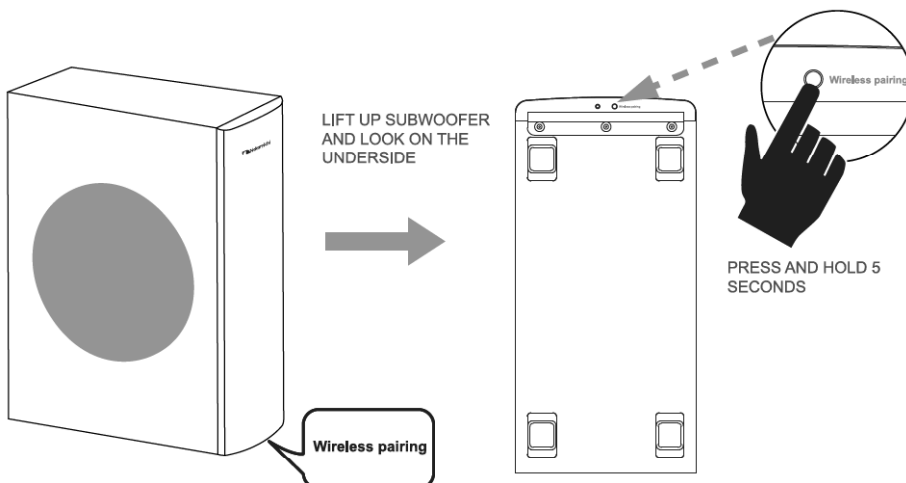
Power Cord: Connect the AC power plug to a wall outlet.

Optical In: Connect to the OPTICAL (Digital) output of an external device, e.g. TV, DVD or Blu-ray player.

Aux In: Connect to the RCA AUX-IN (Analog) output of an external device, e.g. TV, DVD or Blu-ray player.

HDMI IN TV (ARC) Audio Return Channel: Connect to the HDMI ARC (Digital) output to your ARC compliant TV. To enjoy the HDMI ARC function, please ensure your TV is both **HDMI-CEC and ARC compliant** and set up accordingly.

● BOTTOM PANEL OF WIRELESS SUBWOOFER



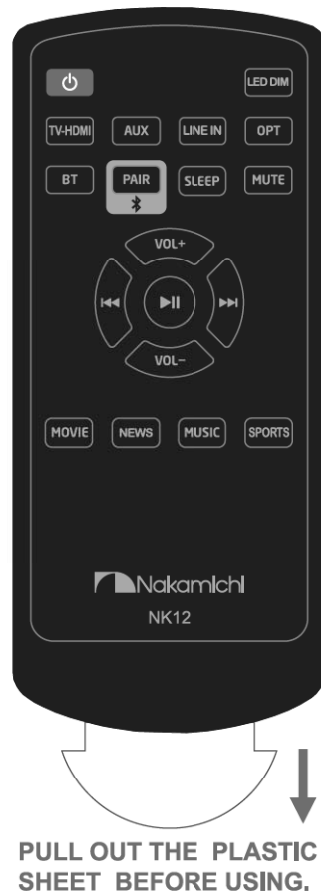
SYNC: Syncing the sound bar and wireless subwoofer

The sound bar and wireless subwoofer come from the factory presets to work together. If the subwoofer stops receiving an audio signal, follow these instructions to re-establish connection.

1. Unplug and plug-in the sub-woofer AC cable from the wall socket.
2. Press and hold the **Wireless Pairing** button on the underside of the subwoofer for five (5) seconds.
3. The LED indicator next to it will start blinking, indicating that the sound bar and subwoofer are connecting.
4. When the LED indicator stops blinking, the subwoofer and sound bar are connected and ready to use.

REMOTE CONTROL

USING THE REMOTE



Tip: For best results, point the remote at the **right side** of the sound bar where the LED indicator is located. The sensor is located there.

If your remote stops responding, you may need to replace the battery. To replace the battery, open the battery compartment, and then replace the old battery with a new CR2025. Be sure that the + sign on the battery is facing up.

	Press to switch the sound bar ON and OFF.		In Bluetooth mode, Press to enter pairing or Bluetooth reset mode.		Volume Up. Press to increase overall system volume.
	Press to adjust the brightness of the LED display indicator.		Press to set a time to switch device off. (90 mins, 60 mins, 30 mins, 15 mins or OFF)		Volume Down. Press to decrease overall system volume.
	Press to select HDMI-IN TV (ARC) Digital input source.		Mute. Press to turn the sound on or off.		In Bluetooth mode, press to control music to PREVIOUS track.
	Press to select AUX-IN (RCA) Analog input source.		Select the MOVIE EQ effect.		
	Press to select AUX-IN (3.5mm) Analog input source.		Select the NEWS EQ effect.		In Bluetooth mode, press to control music PLAY or PAUSE.
	Press to select OPTICAL Digital input source.		Select the MUSIC EQ effect.		In Bluetooth mode, press to advance music to NEXT track.
	Press to select Bluetooth input source.		Select the SPORTS EQ effect.		

LCD INDICATOR

SOURCE

1. TV-HDMI :
TV

2. AUX :
AU

3. LINE IN :
LINE

4. OPT :
OPT

5. BLUE TOOTH :
BT



The image shows a black Nakamichi NK12 remote control. At the top, there is a power button and an LED DIM button. Below these are buttons for TV-HDMI, AUX, LINE IN, and OPT. The next row contains BT, PAIR (with a Bluetooth symbol), SLEEP, and MUTE. The center features a directional pad with VOL+, VOL-, and a play/pause button. Below the pad are buttons for MOVIE, NEWS, MUSIC, and SPORTS. The bottom of the remote has the Nakamichi logo and the model number NK12.

EQ

1. MOVIE:
MOV

2. NEWS:
NEWS

3. MUSIC:
MUS

4. SPORTS:
SPRT

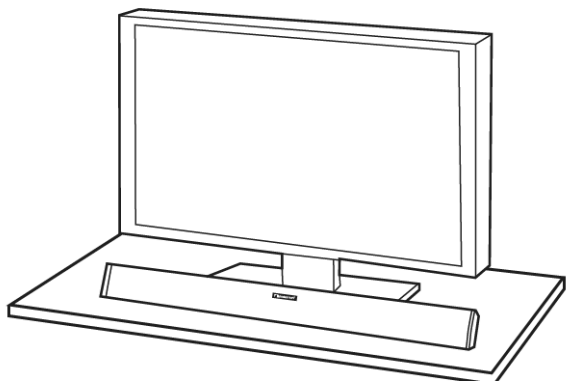
SPECIFICATIONS

Sound Bar:	Two 2.25" Full-Range Drivers on each side
Subwoofer:	One 6.5" Driver
Frequency Response (Sound Bar):	150 Hz - 20 kHz
Frequency Response (Subwoofer):	40 Hz - 150 Hz
Sound Pressure Level (SPL):	90 dB
Voltage (Sound Bar): Voltage:	120V, 60 Hz
Dimensions (Sound Bar):	37.4" (W) x 3.5" (H) x 2" (D)
Dimensions (Subwoofer):	16.5" (W) x 12.3"(H) x 5.9" (D)
Net Weight (Sound Bar):	5 lbs.
Net Weight (Subwoofer):	11.9 lbs.

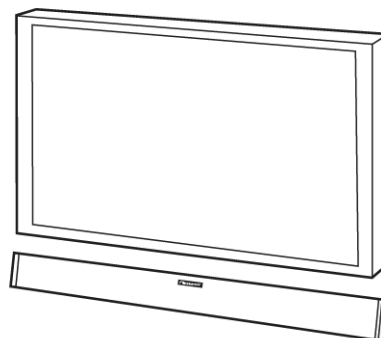
WHERE TO LOCATE YOUR SOUND BAR FOR THE BEST SOUND

The sound bar comes with rubber feet already attached, so it will sit securely on any flat surface. Just center the bar under your TV screen. If your TV is housed in a media center, you can place the bar above the TV.

If your TV is wall mounted, the bar can mount right beneath it. The bar has built-in slots that make it easy.



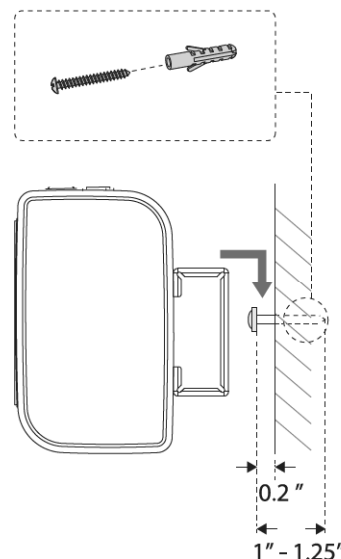
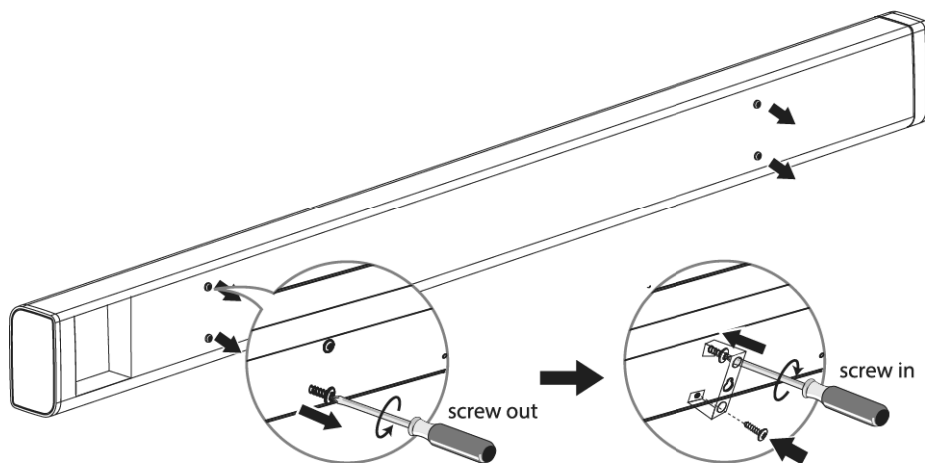
Shelf mounted sound bar sits in front of TV



Wall mounted sound bar

INSTALLING THE WALL MOUNT

Identify mounting location to the wall using supplied drywall screws and brackets. Attached one end first then pivot until it is level.



(* Illustration may vary slightly from those shown.)

INSTALLATION PRECAUTIONS

- Install on a vertical wall only.
- For the installation, avoid a location with high temperature or humidity, or a wall that cannot sustain the weight of the set.
- Check the strength of the wall. If the wall is not strong enough to support the unit, reinforce the wall or install the unit on different wall that can support the unit's weight.

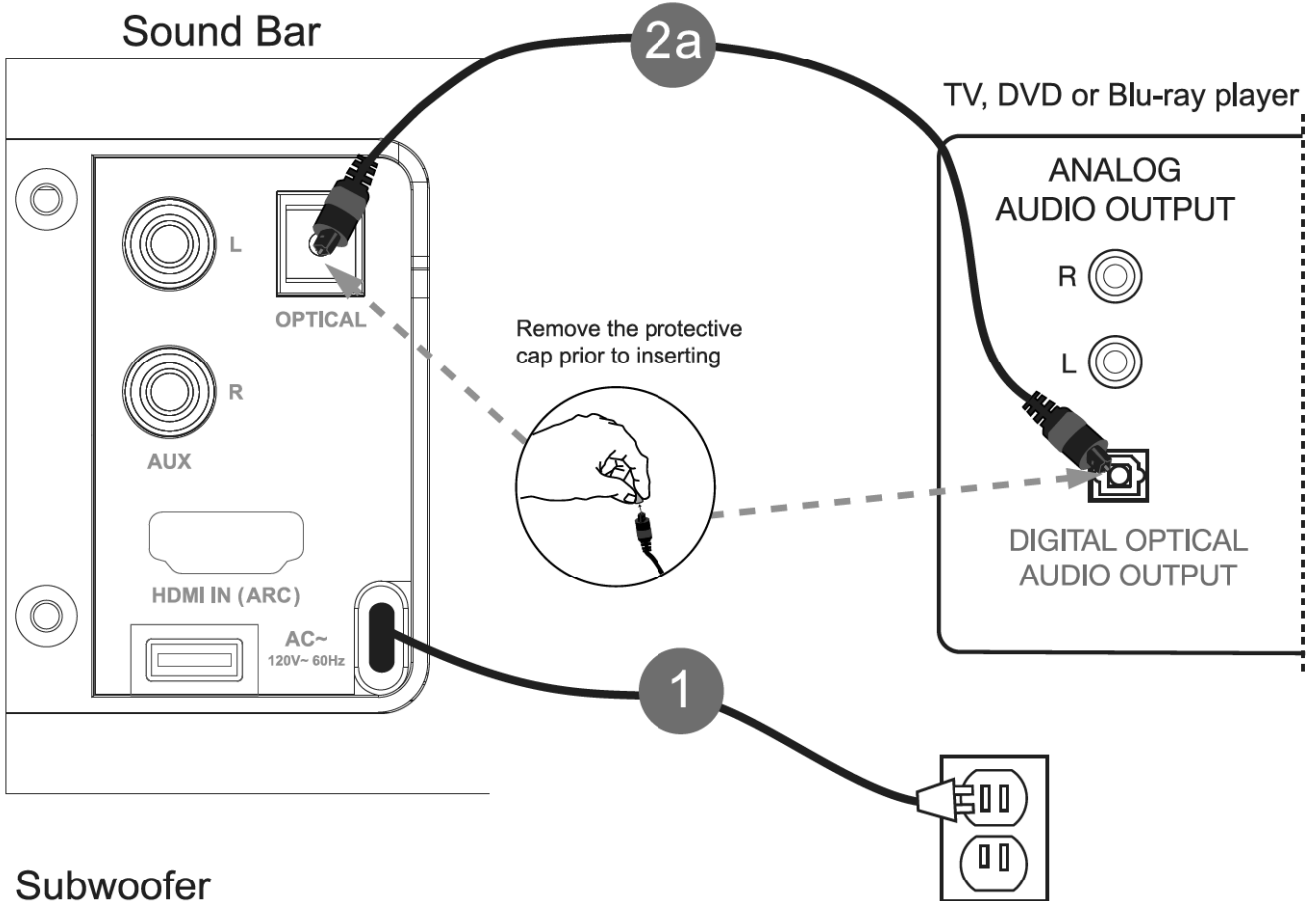
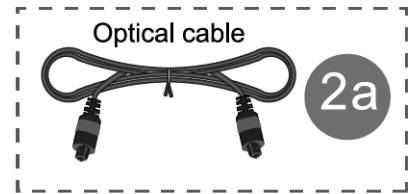
- Purchase and use the fixing screws or molly appropriate for the kind of wall you have (plaster board, iron board, wood, etc.). If possible, fix the support screws into wall studs.
- Connect cables from the unit to external devices before you install it on the wall.
- Make sure the unit is turned off and unplugged before you install it. Otherwise, it may cause an electric shock.

HOW TO CONNECT YOUR SOUND BAR

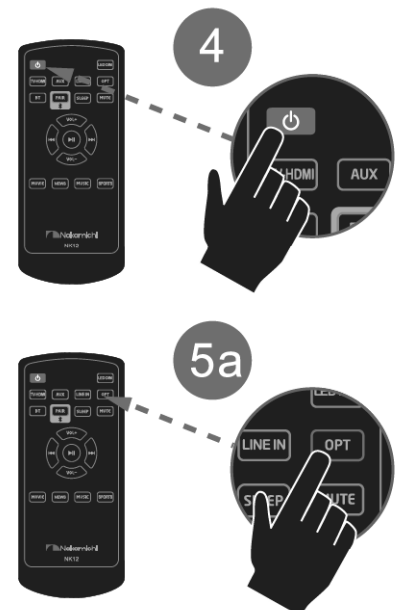
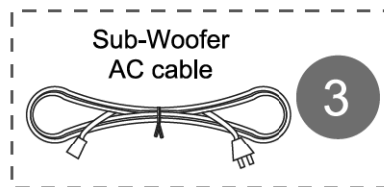
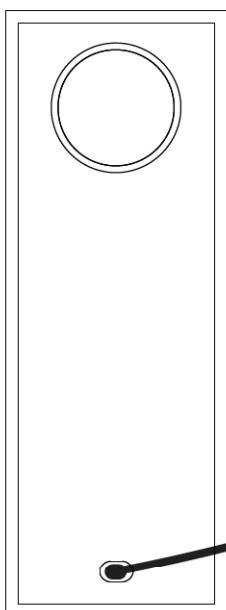
RECOMMENDED HOOK UP: OPTICAL

Optical Cable: Remove the protective cap prior to inserting

Tip: If there is no sound come out from the sound bar, make sure the audio setting of your source player (e.g. TV, DVD, Blu-ray player or video game console) is set to PCM with OPTICAL input.

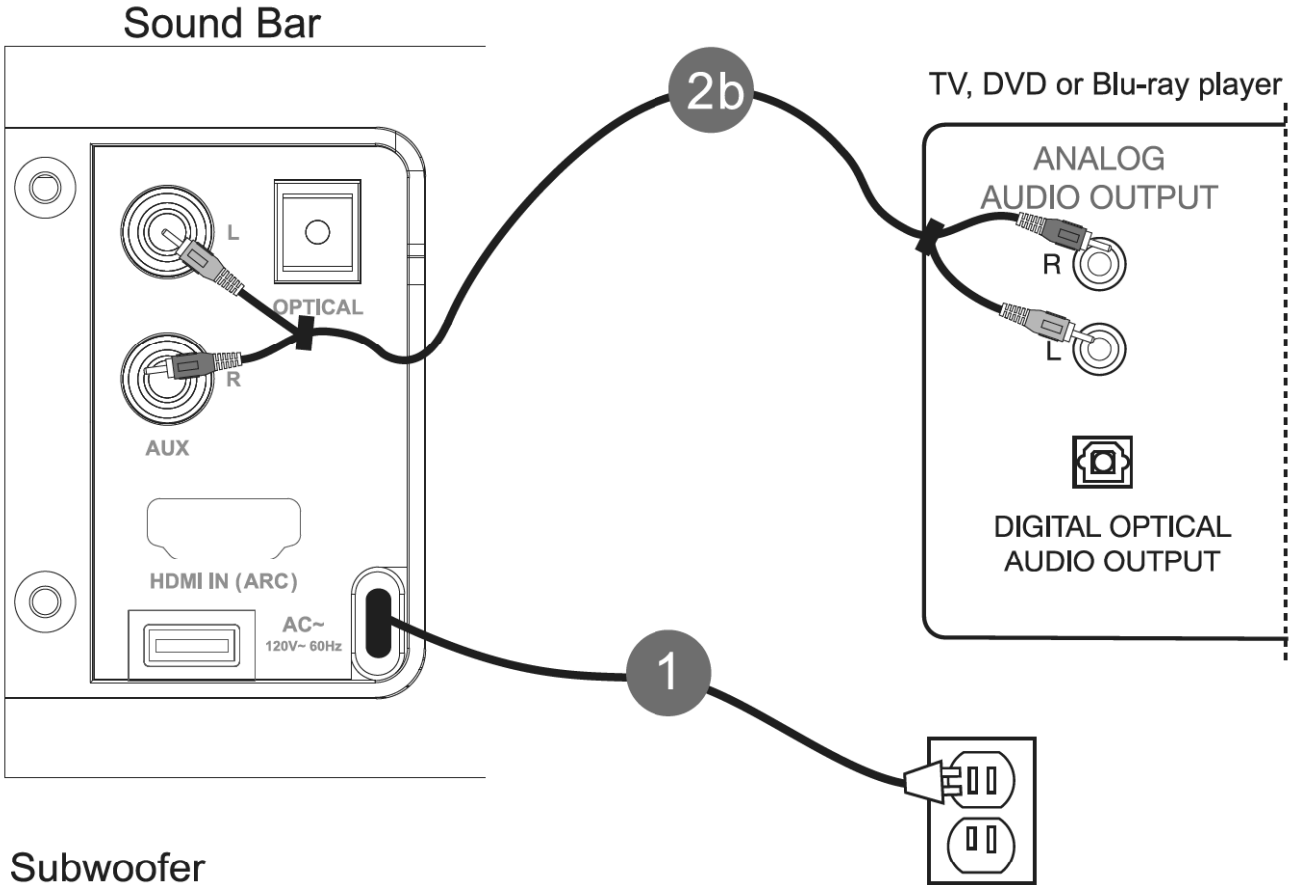
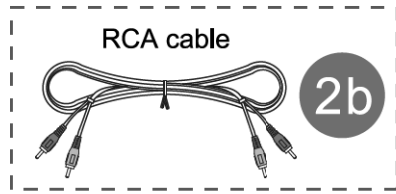


Subwoofer

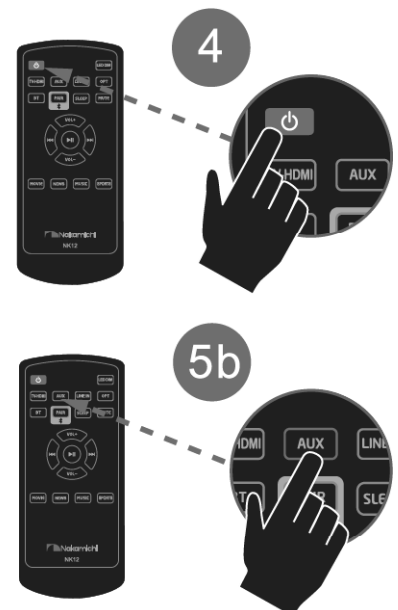
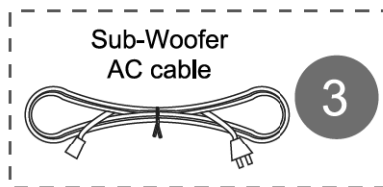
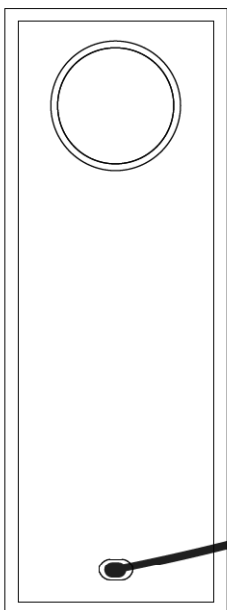


HOW TO CONNECT YOUR SOUND BAR

ALTERNATE HOOK UP: AUX-IN (RCA)

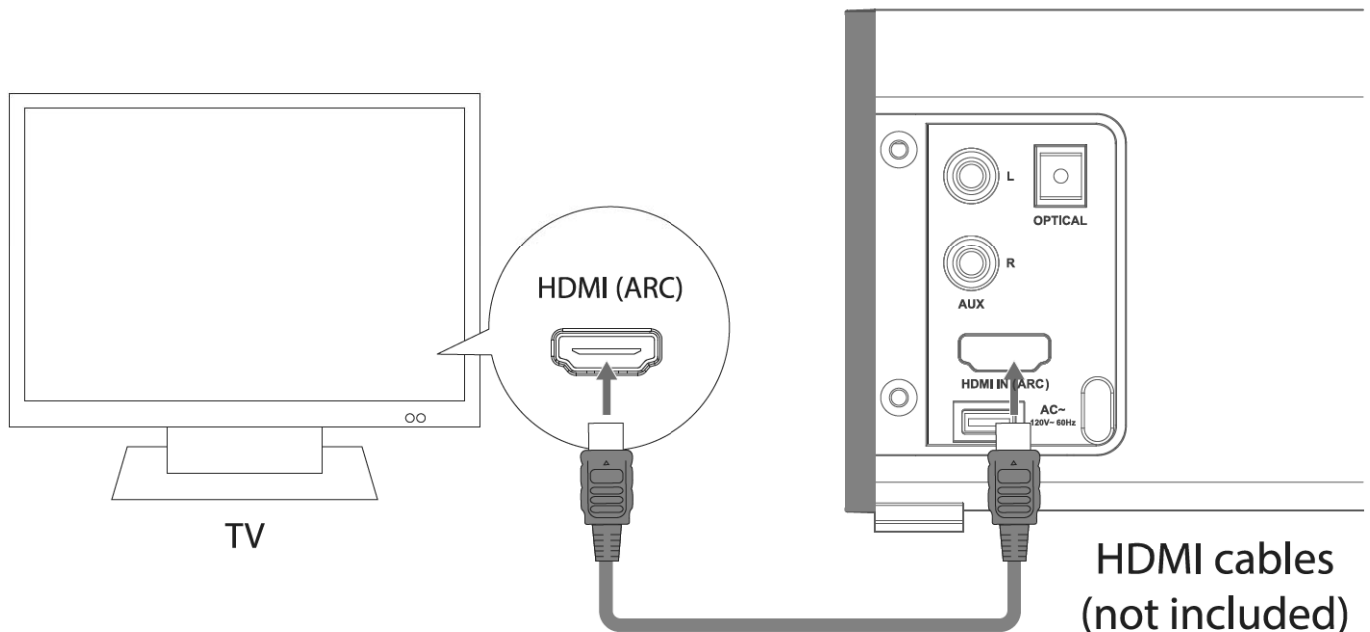


Subwoofer



HOW TO CONNECT YOUR SOUND BAR

USE THE HDMI-IN TV (ARC) HOOK UP:



The ARC (Audio Return Channel) function allows you to send audio from your ARC-compliant TV to your sound bar through a single HDMI connection. To enjoy the ARC function, please ensure your **TV is both HDMI-CEC and ARC compliant** and set up accordingly. When correctly set up, you can use your TV remote control to adjust the volume output (VOL +/- and MUTE) of the sound bar.

- Ensure to use an HDMI cables that can support the ARC function.

(HDMI-CEC will be called different names by different manufacturers - please refer to your owner's manual for details on setting up HDMI-CEC and ARC.)

Connect the HDMI cable from your sound bar's HDMI In TV (ARC) socket to the HDMI (ARC) socket on your ARC-compliant TV. Then press the remote to select TV-HDMI.

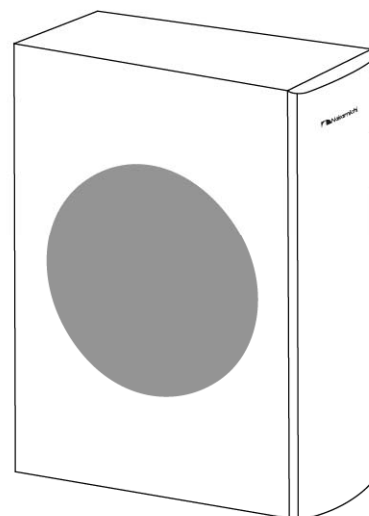
HOW TO CONNECT YOUR SUBWOOFER

Your subwoofer receives a wireless audio signal from the sound bar, so all you need to do is plug in the power cord and make sure the main power switch is ON.

WHERE TO LOCATE YOUR SUBWOOFER FOR THE BEST SOUND

Your wireless subwoofer is really easy to place and can go just about anywhere in the room. Plus you don't have to worry about connecting wires, because the only wire you have to plug in is the power cord. And that's it.

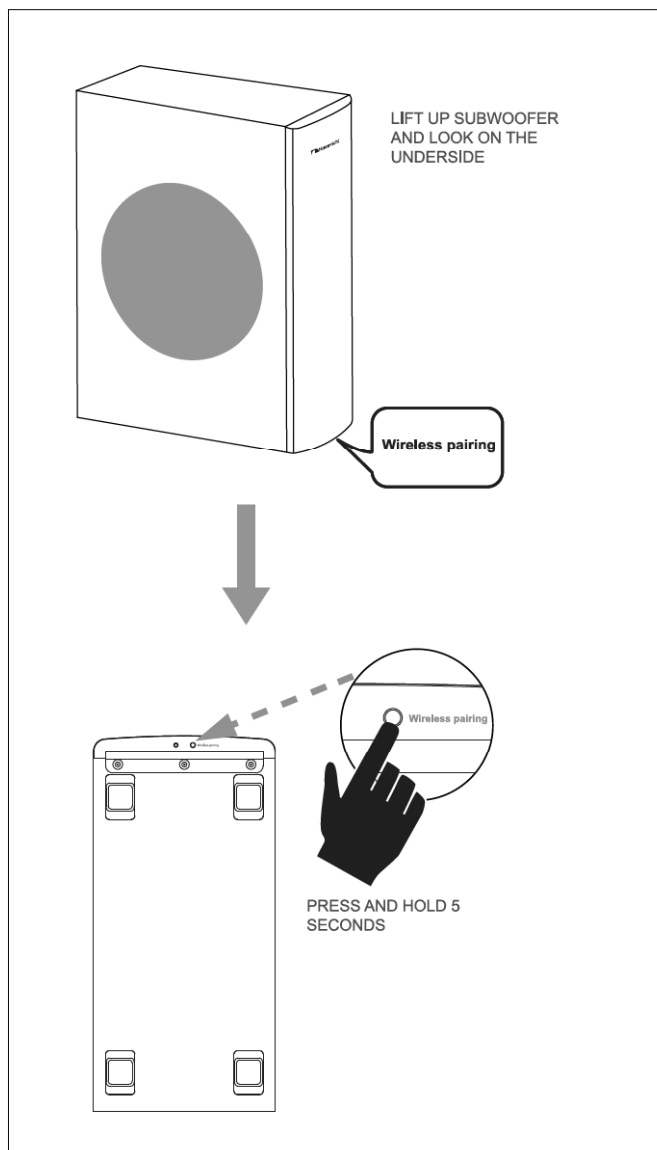
Here's a little trick: If you place your subwoofer in a corner of your room, it will reinforce the subwoofer's output, making it sound louder.



CONNECTING THE WIRELESS SUBWOOFER

The sound bar and wireless subwoofer come from the factory presets to work together. If the subwoofer stops receiving an audio signal, follow these instructions to re-establish connection.

1. Unplug and plug-in the sound bar's AC cable from the wall socket.
2. Unplug and plug-in the sub-woofer's AC cable from the wall socket.
3. Press and hold the Wireless Pairing button on the underside of the subwoofer for five (5) seconds.
4. The LED indicator next to it will start blinking, indicating that the sound bar and subwoofer are connecting.
5. When the LED indicator stops blinking, the subwoofer and sound bar are connected and ready to use.



Warning:

The wireless receiving antenna is built into the wireless subwoofer. Keep the unit away from water and moisture. The best range of wireless signal reception is within 23 ft. in a room with no wireless signal interference, such as microwave, WLAN hub, and/or other 2.4G wireless product nearby.

LISTENING TO THE TV SOUND FROM THE SOUND BAR

Control the volume of TV by adjusting your sound bar.

1. Turn on the sound bar, or make sure TV is in standby mode.
2. Turn on the TV.
3. Adjust the volume of the sound bar.
Control the volume of TV by adjusting the TV volume.

If the sound output jack of the TV can be set to "Variable", the volume of the sound bar can be changed by adjusting the TV volume. For TV settings, refer to the operating instruction of the TV.

1. Set the sound output jack of the TV to "Variable".
2. Adjust the volume of the unit according to the TV.
3. Adjust the volume of the sound bar.

SELECTING THE SOUND FIELD

Press the EQ button on the remote control to select the EQ you want to use.

Four Audio Immersion Modes (MOVIE, NEWS, MUSIC and SPORTS) enable you to tailor the NK12 for maximum high performance audio for a more immersive, more thrilling listening experience.

BLUETOOTH PAIRING PROCESS

BLUETOOTH

You can use a Bluetooth device to enjoy music with high quality stereo sound, all without wires!

What is Bluetooth?

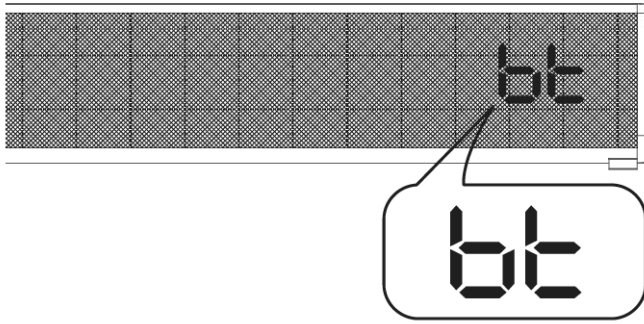
Bluetooth is a technology that enables Bluetooth-compliant devices to interconnect easily with each other using a short wireless connection.

- A Bluetooth device may cause noise or malfunction, depending on usage, when:
 - A part of your body is in contact with the receiving/transmitting system of the Bluetooth device or the Nakamichi NK 12.
 - It is subject to electrical variation from obstructions caused by a wall, corner, or office partition.
 - It is exposed to electrical interference from same frequency-band devices including medical equipment, microwave ovens, and wireless LANs.
 - Pair the Nakamichi NK 12 with the Bluetooth device while they are close together.
 - The further the distance is between Nakamichi NK 12 and Bluetooth device, the worse the quality is.
- If the distance exceeds the **Bluetooth operational range of 33 feet**, the connection is lost.
- In poor reception-sensitivity areas, the Bluetooth connection may not work properly.
 - The Bluetooth connection only works when it is close to the set. The connection will be automatically cut off if the Bluetooth device is out of range. Even within range, the sound quality may be degraded by obstacles such as walls or doors.
 - This wireless device may cause electric interference during its operation.

Check if the Bluetooth device supports the Bluetooth compliant stereo headset function.

Pairing Bluetooth from remote control

1. Press the BT button on the remote control to display the bt message on the sound bar.



2. The orange bt indicator on LCD screen starts blinking to enter pairing mode.
3. Turn on your Bluetooth device to connect. Select the Bluetooth domain name: NK 12 to connect.
4. There is NO password required. After the "Paired" voice prompt, the system is successfully connected.
5. Play music from the connected device. You can listen to the music playing on your connected Bluetooth device over the Nakamichi NK 12.

To disconnect the Bluetooth device or reset Bluetooth pairing from Nakamichi NK12.

You can disconnect the Bluetooth device or reset Bluetooth pairing from NK 12.

- Press the PAIR button from the remote, the Bluetooth device will be disconnected from the sound bar.
- When the NK 12 is disconnected from the Bluetooth device the NK 12 will display flashing "bt" symbol on the front LCD display with a "Disconnected" voice prompt.

To reconnect Bluetooth device to NK 12, repeat step: "Pairing Bluetooth from remote control."

TROUBLESHOOTING

The Sound bar does not power on.

- Ensure you have plugged the power supply into a live wall outlet.
- Ensure that all components of the power supply are connected properly.
- Ensure the power supply is properly connected to the sand bar power input.
- Press the POWER button on the remote control.

The subwoofer does not power on.

- Ensure the subwoofer is plugged into a live wall outlet.

No sound from the bar.

- Check that the TV, Blue-ray, DVD player or cable box is providing a signal.
- If necessary, check using an alternate source.
- Check that the sound bar is receiving power and is turned on.
- Turn up the volume of the sound bar.
- Check the input cables to make sure they are connected securely.
- Turn up the volume of your television or cable box.
- Check mute status: If so, press the MUTE button on the bar.

No sound from the subwoofer.

- Is the subwoofer status indicator blinking? If so, the bar and subwoofer's wireless connection has been lost. Turn off both the bar and subwoofer. Then turn them back on to re-establish communication. If this does not fix the issue, refer to the section "CONNECTING THE WIRELESS SUBWOOFER".

The sound coming from the bar is distorted.

- Try turning down the volume of your audio source, if possible.
- Audio processing (see FAQ's)—there may be audio processing occurring prior to reaching the sound bar. Disable this processing.

The included remote control won't work.

- Ensure the battery's protective plastic tab has been removed.
- Replace the battery (CR2025).

Bass output is not loud enough.

- Turn up the sound bar's volume using the remote control.
- Place the subwoofer closer to a corner of the room.
- Move subwoofer closer to viewing location within the room.
- Switch to a different EQ mode.

The subwoofer's output is intermittent, or sounds weak or is distorted.

- The wireless subwoofer could be too far away from the bar to receive a sufficiently strong signal. Try moving the subwoofer closer.

FAQ'S (FREQUENTLY ASKED QUESTIONS)

My TV does not have an optical output. How do I connect my audio?

Use the RCA audio outputs (white/red pair) on your TV (if available) and connect directly to the Sound Bar NK12 using the supplied RCA cable.

My audio sounds strange and distorted.

Your Nakamichi NK 12 requires a clean, unaltered stereo signal for proper audio performance. If the sound from your Nakamichi NK 12 is strange or distorted, then check the audio menus of whatever source(s) are connected to your Nakamichi NK 12 and make sure any audio processing is turned off.

To contact customer support:

Email: support@nakamichi-usa.com

A NOTE REGARDING WIRELESS PERFORMANCE

Like all wireless devices, your Nakamichi NK12 may be susceptible to RF interference from such sources as microwave ovens, Wi-Fi computer systems, video game systems, cordless telephones, blue tooth systems, baby monitors and other devices. In particular, any devices operating in the 2.4GHz band may cause intermittent wireless connections between the Nakamichi NK 12 sound bar and the subwoofer. It is also possible that your Nakamichi NK12 Home Theatre System may affect other wireless systems. For the most part, you can avoid wireless performance problems by physically separating these devices from your Nakamichi NK12 Home Theatre System. Maintaining a distance of several feet or more between your Nakamichi NK12 sound bar and any wireless device should prevent any mutual interference effects. If you do notice any subwoofer signal dropouts take care to identify the root cause (most commonly having other wireless devices too close) and resolve accordingly. Any interference effects from a microwave oven will cease once the oven stops operating and may be resolved on a long-term basis by increasing the physical distance between your Nakamichi NK12 Home Theatre System and the microwave oven.

FCC STATEMENTS

Compliance with FCC rules (USA only)

This device complies with Part 15 of the FCC rules. Operation is subject to the following two conditions:

- (1) this device may not cause harmful interference, and
- (2) this device must accept any interference received, including interference that may cause undesired operation.

FCC WARNING

You are cautioned that any changes or modifications not expressly approved in this manual could void your authority to operate this equipment.

NOTICE

This equipment has been tested and found to comply with the limits for a Class B digital device, pursuant to Part 15 of the FCC Rules. These limits are designed to provide reasonable protection against harmful interference in a residential installation. This equipment generates, uses, and can radiate radio frequency energy and, if not installed and used in accordance with the instructions, may cause harmful interference to radio communications. However, there is no guarantee that interference will not occur in a particular installation. If this equipment does cause harmful interference to radio or television reception, which can be determined by turning the equipment off and on, the user is encouraged to try to correct the interference by one or more of the following measures:

- Reorient or relocate the receiving antenna.
- Increase the separation between the equipment and receiver.
- Connect the equipment into an outlet on a circuit different from that to which the receiver is connected.
- Consult the dealer or an experienced radio/TV technician for help.

SAFETY INFORMATION

WARNING

read these safety warnings and cautions carefully to ensure your personal safety and prevent property damage.

Fire and Electric Shock Hazard

- Do not expose the device to liquid, moisture, humidity, or rain. Do not use the device near a bathtub, sink, sauna, pool, or steam room. Exposure of the Nakamichi Sound Bar System to moisture could result in electric shock.
- Do not drop, disassemble, open, crush, bend, deform, puncture, shred, microwave, incinerate, paint, or insert foreign objects in to the device . Such actions could result in electric shock.
- Clean the device only with a dry cloth.
- Do not expose your device to extremely high or low temperatures.
- Do not leave your device in direct sunlight for extended periods of time.
- Do not leave your device near open flames such as cooking burners, candles, or fireplaces.
- Do not block any ventilation openings.

BATTERY/CHARGER HAZARD

- Do not dispose of your device in a fire. The battery could explode causing injury or death.
- Only charge the battery in accordance with the user instructions supplied with the device.
- Do not attempt to disassemble the device charger or force open the built-in battery because this may result in electric shock.
- Do not charge the device in damp areas or in extremely high or low temperatures because this could result in electric shock.
- Do not clean the device when it is being charged. Always unplug the charger first before cleaning the device.

Automobile Accident Hazard

- Do not leave or store the device or any of its accessories near or over your automobile's air bag because serious injury may result when an air bag deploys.

Fall Hazard

- Do not place the device on high surfaces such as shelves. During music playback the device may move which could cause the device to shift and fall off of the edge.

CAUTION

- Do not use abrasive cleaners to clean your device because this could cause scratches and damage.
- Do not bring your device in to contact with any sharp objects because this could cause scratches and damage.
- Do not insert anything into your device unless otherwise specified in

the user instructions. This may damage the internal components.

- Do not attempt to repair, modify, or disassemble your device yourself, it does not contain any user-serviceable components.
- Do not attempt to replace your device battery, it is built-in and is not changeable.
- Observe all signs and displays that require an electrical device or RF radio product to be switched off in designated areas.
- Turn off your device prior to boarding an aircraft. Do not use the device inside an aircraft unless allowed by your airline.
- Dispose of the device and the device battery in accordance with local regulations. Do not dispose of the battery with regular household waste.

Warning:

Changes or modifications to this unit not expressly approved by the party responsible for compliance could void the user's authority to operate the equipment.

FCC NOTICE

This device complies with Part 15 of the FCC Rules. Operation is subject to the following two conditions:

1. This device may not cause harmful interference, and
2. This device must accept any interference received, including interference that may cause undesired operation.

FCC CAUTION

- Any changes or modifications not expressly approved by the party responsible for compliance could void the user's authority to operate this equipment.
- This device and its antenna(s) must not be co-located or operating in conjunction with any other antenna or transmitter.

FCC ID: Z8M-TB362

- To locate the FCC identification numbers, please look on the underside of the speaker. Bluetooth® SIG

The Bluetooth word mark and logos are registered trademarks owned by Bluetooth SIG, Inc. Further information please visit www.bluetooth.org

Bluetooth QD ID: B021525

- To locate the Bluetooth Qualified Design ID, please look on the reverse of the Sound Bar .

RADIATION EXPOSURE STATEMENT

This equipment complies with FCC/IC radiation exposure limits set forth for an uncontrolled environment. This equipment should be installed and operated with minimum distance 20cm between the radiator & your body. This transmitter must not be co-located or operating in conjunction with any other antenna or transmitter.

WARNING: LISTEN CAREFULLY

Nakamichi loudspeakers and subwoofers are capable of playing at extremely high volume levels, which could cause serious or permanent hearing damage. Nakamichi Cooperation USA accepts no liability for hearing loss, bodily injury or property damage resulting from the misuse of its products. Keep these guidelines in mind and always use your own good judgment when controlling volume:

- You should limit prolonged exposure to volumes that exceed 85 decibels (dB).

Refer to the Occupational Health and Safety Administration (OSHA) guidelines at:

www.osha.gov/dts/osta/otm/noise/standards_more.html.

LIMITED WARRANTY (U.S.Only)

Nakamichi Corporation USA (“Nakamichi”) warrants to the original retail purchasers (the “Original Purchasers”) only. The Original Purchasers refer to the purchasers who purchase this Product from Nakamichi’s authorized retailers (“Nakamichi Retailers”). This warranty will terminate automatically prior to its stated expiration if the Original Purchaser sells or transfers this Product to any other party. Nakamichi warrants that the LOUDSPEAKER(S), PASSIVE CROSSOVER COMPONENT(S) and ENCLOSURE on this Product will be free from defects in materials and workmanship for a period of one (1) year from the date of original retail purchase from Nakamichi Retailer. Furthermore, Nakamichi warrants that any AMPLIFIER OR OTHER ELECTRONIC COMPONENT that may be included in this Product will be free from defects in materials and workmanship for a period of one (1) year from the date of original retail purchase from Nakamichi Retailer. Defective Products must be shipped, together with proof of purchase in the form of original sales receipts from Nakamichi or Nakamichi’s Retailer showing the Product Name and date of purchase, freight and insurance prepaid, to Nakamichi’s Support Centre at 2645 Brooklyn Queens Expressway W., Woodside, NY 12377. This Product must be shipped in either its original packaging or packaging of affording equal degree of protection; in any case the risk of loss or damage in transit is to be borne by you.

If upon examination at Nakamichi’s Support Centre it is determined that the unit was defective in materials or workmanship at anytime during this Warranty period, Nakamichi will, at its option, repair or replace this Product at no additional charge, except as set forth below. All replaced parts and Products become the property of Nakamichi. Products replaced or repaired under this warranty will be returned to you, within a reasonable time, freight prepaid. This warranty does not include service or parts to repair damage caused by accident, disaster, acts of GOD, misuse, abuse, negligence, inadequate packing or shipping procedures, commercial use, voltage inputs in excess of the rated maximum of the unit, cosmetic appearance of cabinetry not directly attributable to defect in materials or workmanship, or service, repair, or modification of the Product which has not been authorized or approved by Nakamichi. This warranty shall terminate if the serial number on the Product has been removed, tampered with or defaced.

There are no other express or implied warranties. Nakamichi’ liability is limited to repair or, at its sole option, replacement of this Product. Incidental, special and consequential damages are disclaimed where permitted by law. This Warranty applies only to Products purchased in the United States of America.

CUSTOMER SUPPORT

Thank you for your purchase of this Product. If you have any question or comment, please visit our website at www.nakamichi-usa.com/support or email them to support@nakamichi-usa.com.

Nakamichi Corporation USA
2645 Brooklyn Queens Expressway W., Woodside, NY 12377