

USE & CARE GUIDE

OFFSET UMBRELLA 10' ROUND

Product Code: 08771343-4

UPC Code: 8-48681-03668-6

Date of Purchase: ____ / ____ / ____

Thank you for your purchase

Thank you for your purchase!

We are pleased that you have chosen Kmart for your outdoor furniture purchase. We hope that you enjoy the unmatched quality, comfort, and style of your new patio set. Every piece is meticulously considered all the way down to the smallest details, exclusively for you, by our world class design team. We know you have a choice when it comes to your patio umbrella needs, so from our team to yours, thank you for letting us be a part of your outdoors.

Table of Contents

Table of Contents	2
Safety information	3
Umbrella Set Up	3
Examine Your Umbrella	3
Warranty	3
What is Covered	3
What is Not Covered	3
Care and Maintenance	3
Pre- Assembly	4
Planning Assembly	4
Hardware Included	4
Package Contents	5
Assembly Instruction	6
Customer Service	16

Safety Information

Umbrella Set Up

- ☐ Ensure that all parts are assembled properly and fully tightened as per the instructions.
- ☐ When placing in the desired location, ensure that the umbrella stands on flat ground.

Examine Your Umbrella

- ☐ Examine occasionally to ensure that there are no loose parts. If loose parts are found, they must be retightened fully before additional use.

Warranty

1 YEAR WARRANTY FOR FRAME AND FABRIC

WHAT IS COVERED

We warrant the frame and fabric to be free of manufacturing defects to the original purchaser for 1 year.

WHAT IS NOT COVERED

It remains the customer's responsibility for freight and packaging charges to and from our service center. This warranty does not cover commercial use, hardware, acts of nature, fire, freezing, and abusive use. In addition, purchase part(s) are not covered under this warranty. We reserve the rights to make substitutions with similar merchandise, if the model is no longer in production.

Customer service: 1-866-905-4107

Care and Maintenance

- ☐ Wipe the frame lightly with a mild solution of soap and water, rinse with clean water, and dry thoroughly.
- ☐ Use and operation: To improve the lifespan of this umbrella, cover when not in use and store in a cool dry place during the off season.

Pre-Assembly

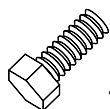
PLANNING ASSEMBLY

To prevent damage, place all parts on a soft surface during assembly. Remove all protective caps before beginning assembly. It takes about 30 minutes for two person to complete all the assembly.



CAUTION: It is normal for the offset umbrella to sway from side to side, back and forth. Always close the umbrella when not in use and during windy conditions. Store your umbrella in a cool dry place to protect the umbrella and from potential injuries due to umbrellas toppling or swaying.

HARDWARE INCLUDED



_AA



_BB

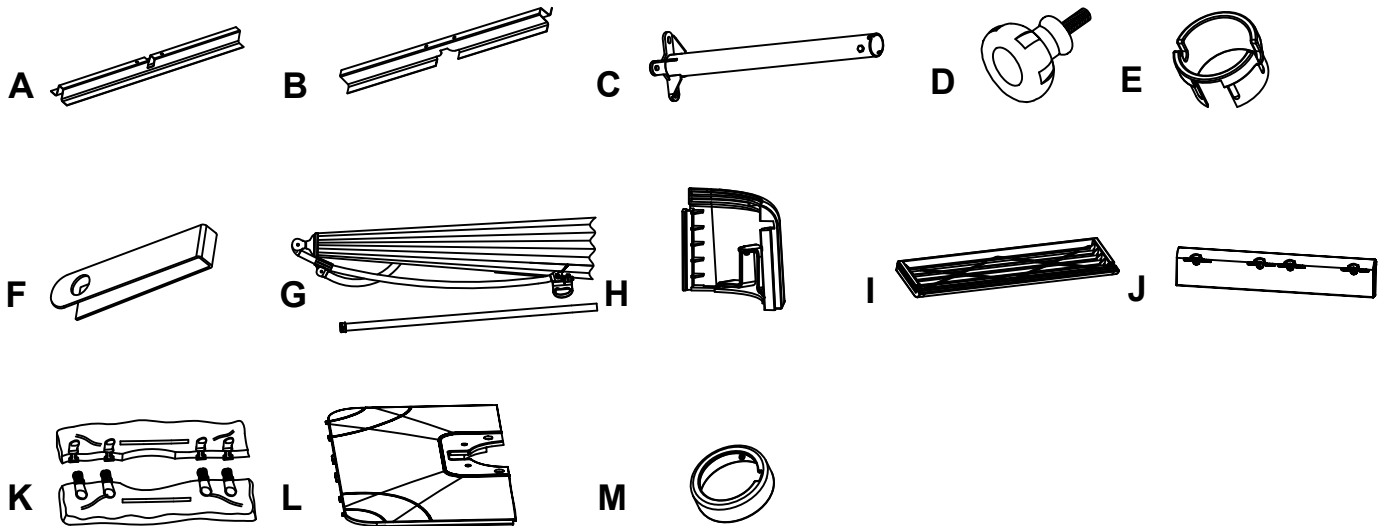


_CC

Part	Description	Size	QT Y.
AA	BOLT	(M8x20mm)	4
BB	WASHER	M8	4
CC	ALLEN WRENCH		1

Pre-Assembly (continued)

Package Contents

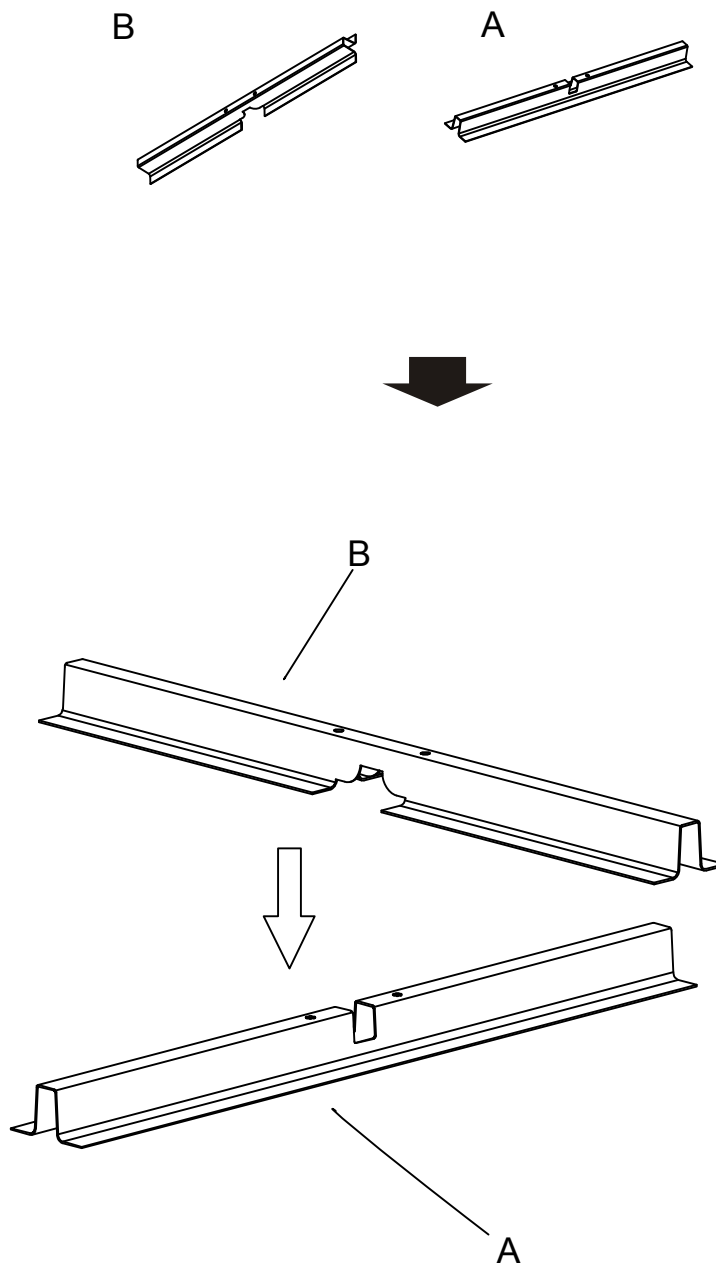


PART	DESCRIPTION	QUANTITY
A	Lower Bracket	1
B	Upper Bracket	1
C	Base Tube	1
D	Knob	1
E	Tube Rim	1
F	Metal Sheet	1
G	Sunshade	1
H	Corner Connector	4
I	Side Panel L	2
J	Side Panel M	2
K	Sand Bag	1
L	Upper Base Cover	2
M	Rotating Cover	2

Assembly Instruction

1 Place the upper bracket onto the lower bracket

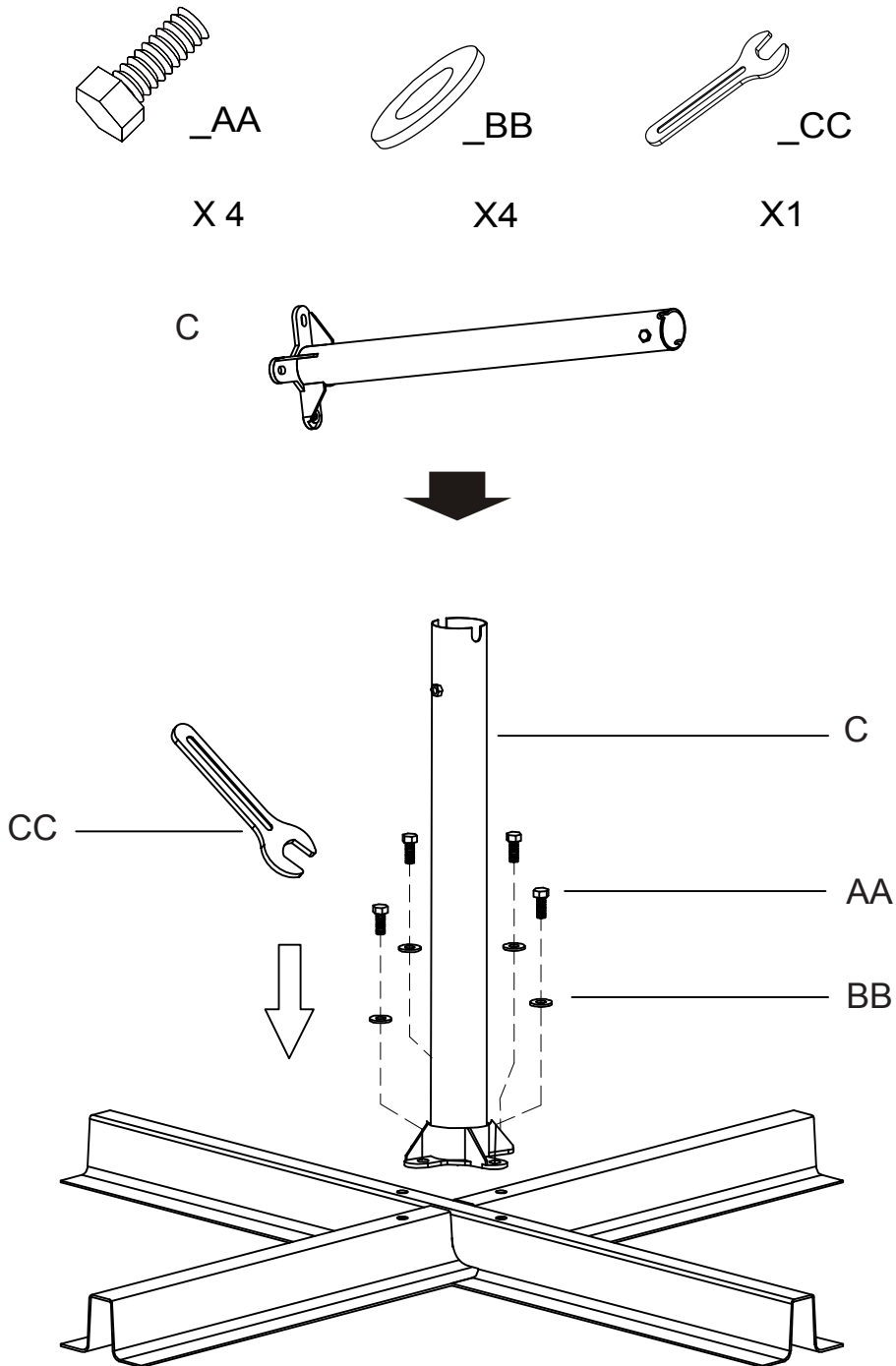
□ PLACE THE UPPER BRACKET “B” ONTO THE LOWER BRACKET “A” AS SHOWN.



Assembly Instruction (continued)

2 Attaching the base tube on the brackets

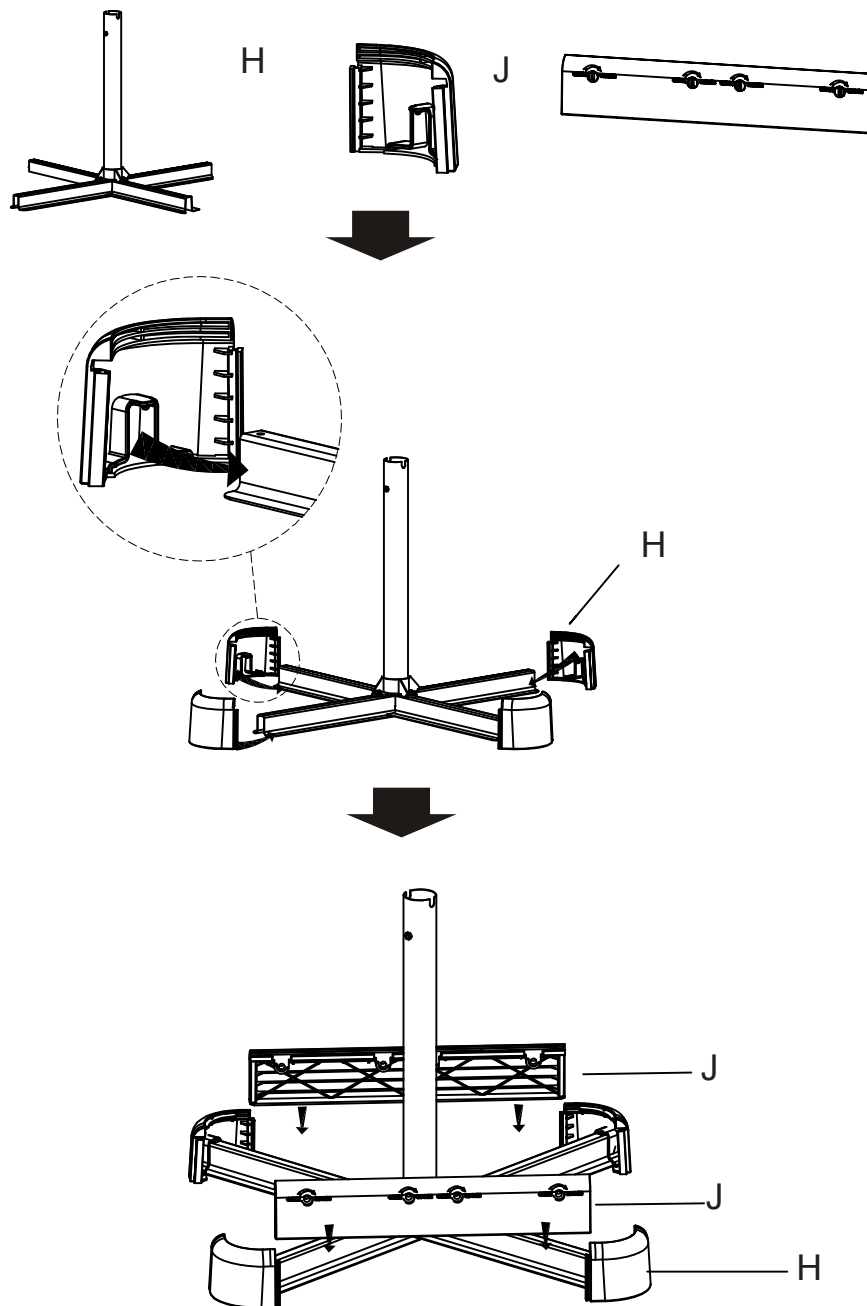
- LINE UP THE BOLT HOLES ONTO THE BASE TUBE "C" WITH THE CORRESPONDING BOLT HOLES ON THE TWO ASSEMBLED BRACKETS. SCREW THE BOLT "AA" ON WITH FLAT WASHER "BB" BY USING THE ALLEN WRENCH "CC" AND ENSURE THAT THE SCREWS ARE TIGHTENED.



Assembly Instruction (continued)

3 Attaching the base tube onto the backrests and side panels using corner connectors

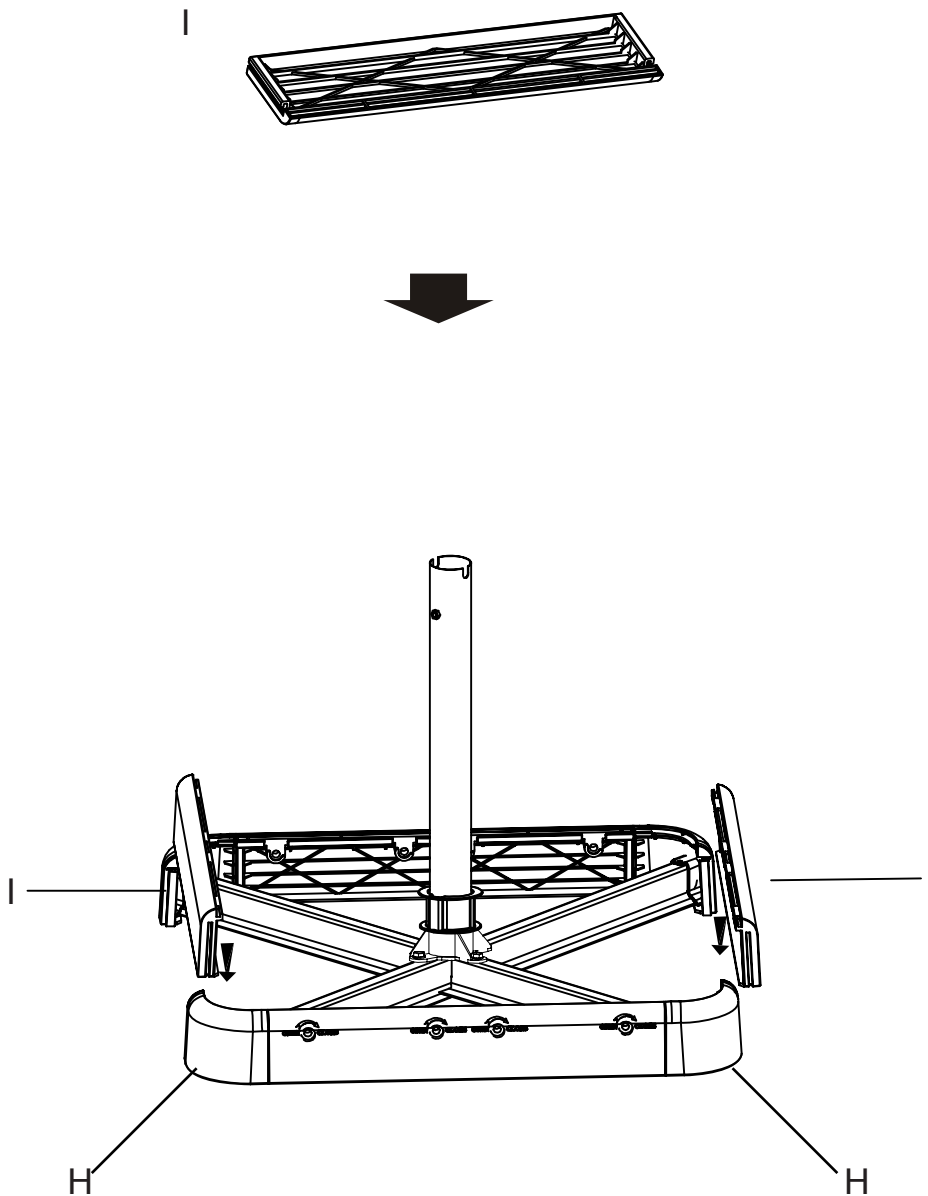
- INSERT THE CORNER CONNECTORS “H” INTO THE FOUR ENDS OF THE ASSEMBLED BRACKETS.
- SLIDE THE SIDE PANEL “J” DOWNWARD BETWEEN THE CORNER CONNECTORS “H”.



Assembly Instruction (continued)

4 Sliding the side panel downwards between the corner connectors

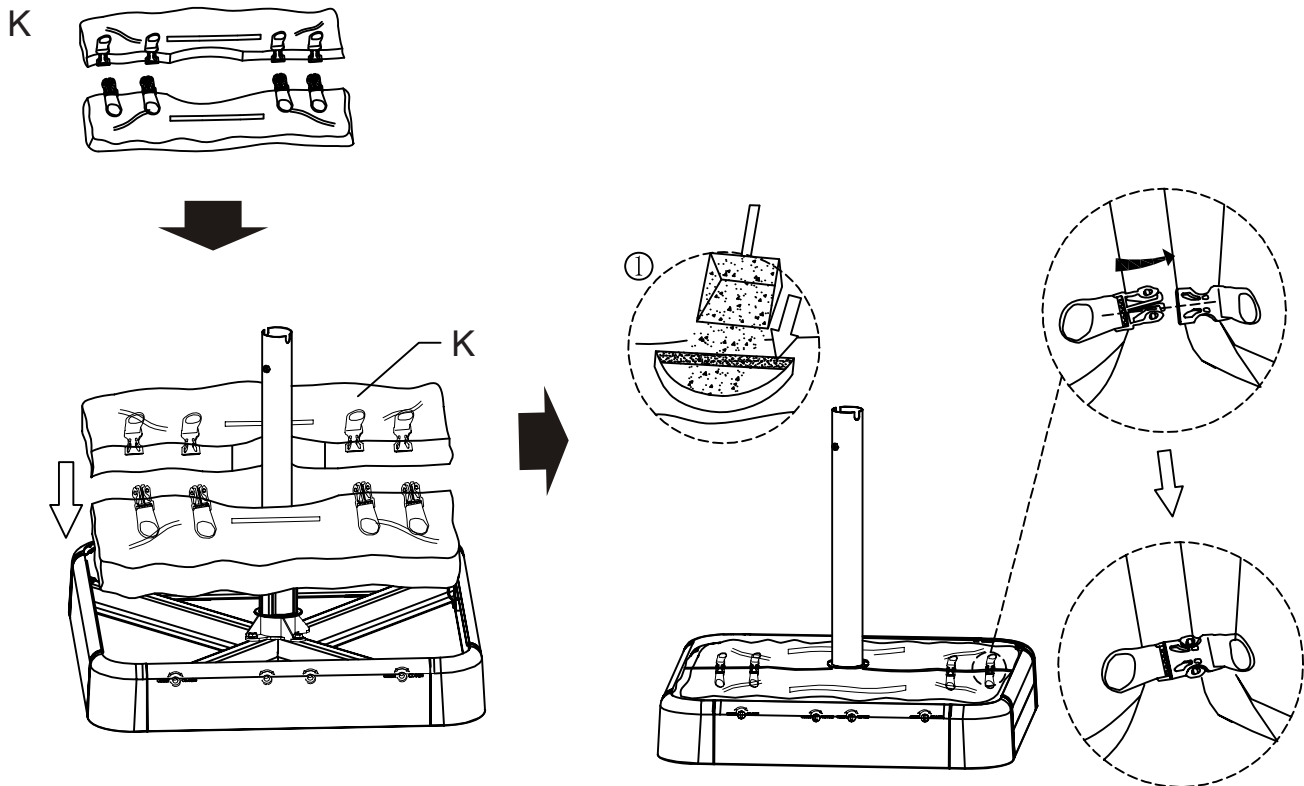
- SLIDE THE SIDE PANEL "I" DOWNWARDS BETWEEN THE CORNER CONNECTORS "H".



Assembly Instruction (continued)

5 Preparing the sand in the umbrella base

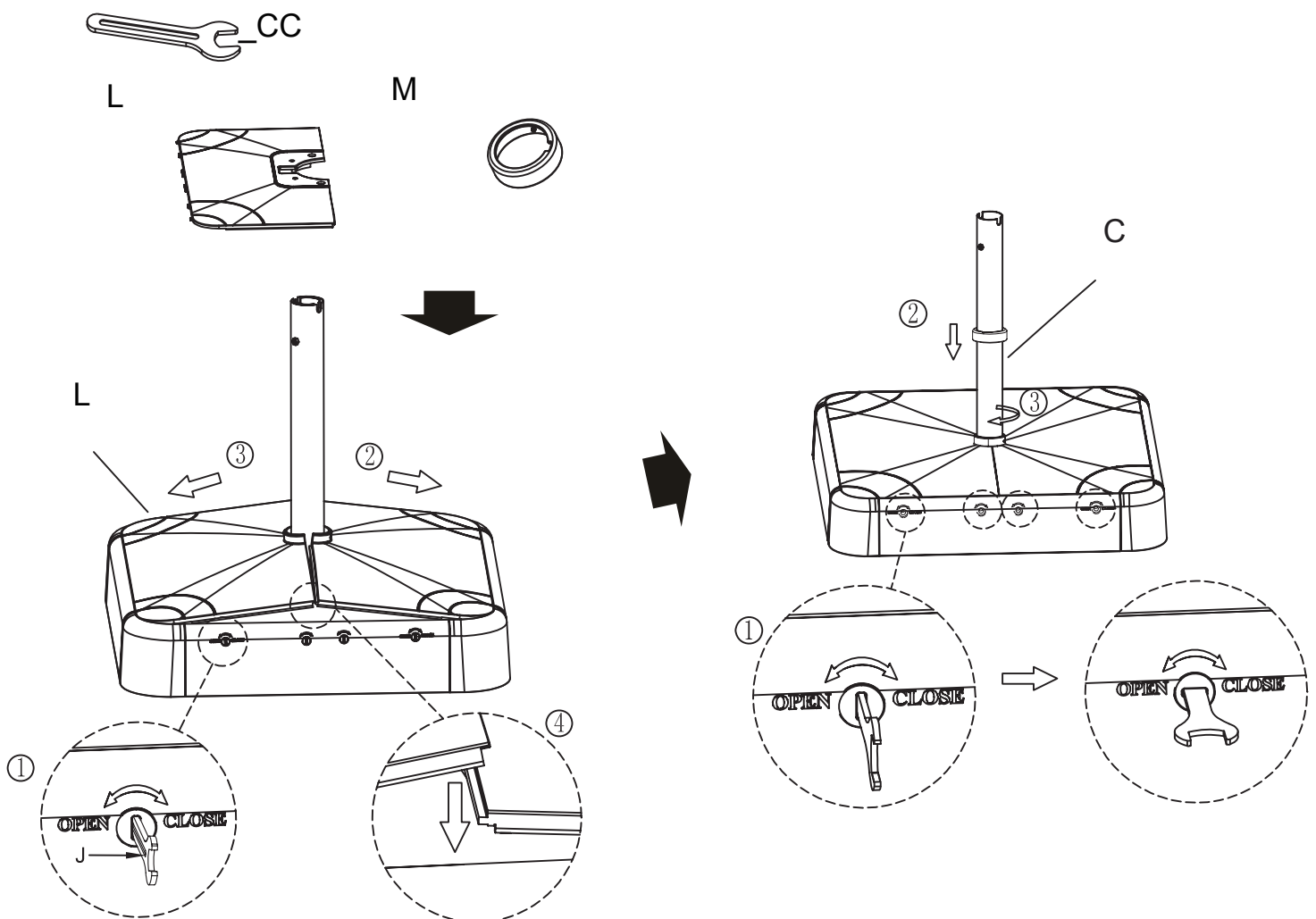
- PLACE THE SAND BAG “K” INTO THE UMBRELLA BASE AS THE PICTURE SHOWS.
- FOR STABILITY THE RECOMMENDED MINIMUM WEIGHT OF SAND TO BE PLACE INTO EACH SAND BAG IS 88 LBS FOR A TOTAL OF 176 LBS.
- AFTER FILLING WITH SAND ONLY, CLOSE THE POUCH BY ENSURING THE VELCRO IS SEALED. LOCK THE TWO SECTION OF THE SAND BAG “K” TOGETHER.



Assembly Instruction (continued)

6 Attaching the upper base-1 and 2 cover with the base side panels

- ❑ CHECK THE LOCKER FIRST TO MAKE SURE IT IS AT THE RIGHT POSITION AS THE PICTURE SHOWS.
- ❑ ASSEMBLE THE UPPER BASE COVER "L" WITH THE BASE SIDE PANELS "I" AS THE PICTURE SHOWS.
- ❑ MAKE SURE THE UPPER BASE COVER "L" IS PLACED PROPERLY FOR EASY LOCKING.
- ❑ USE THE END SIDE OF THE WRENCH "CC" CLOCKWISE TO LOCK ALL 8 LOCKS.
- ❑ EMBED ROTATING COVER "M" INTO THE BASE TUBE "C" AND TIGHTEN IT CLOCKWISE.

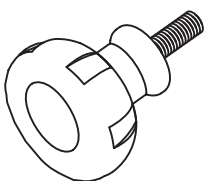


Assembly Instruction (continued)

7 Attaching the metal sheet and the tube rim to the base tube

- AFFIX THE METAL SHEET "F" TO THE BASE TUBE "C" AND ROTATE BY USING KNOB "D"
- PUT TUBE RIM "E" ONTO THE BASE TUBE "C"

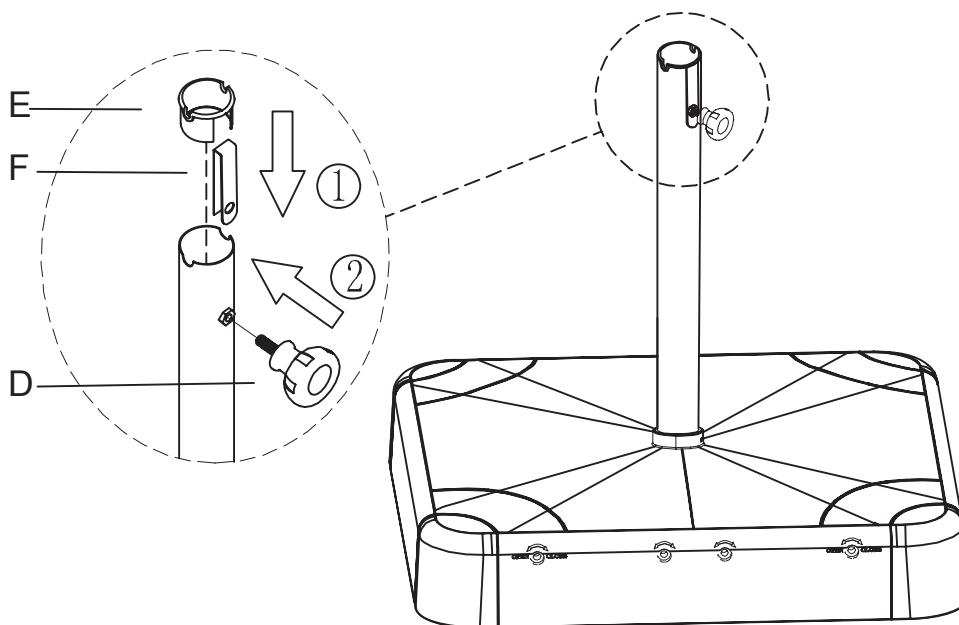
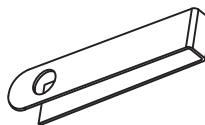
D



E



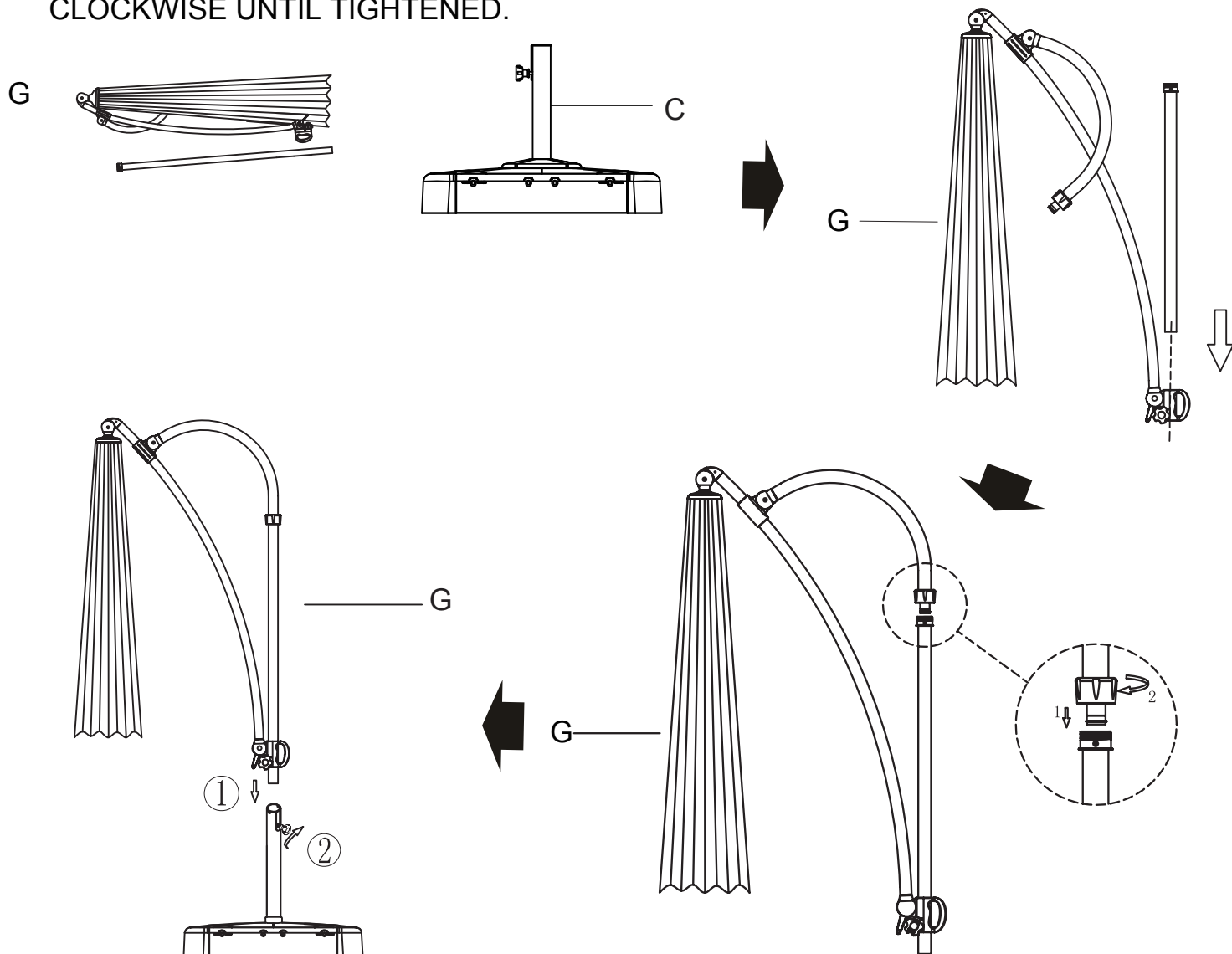
F



Assembly Instruction (continued)

8 Inserting the Sunshade into the base tube

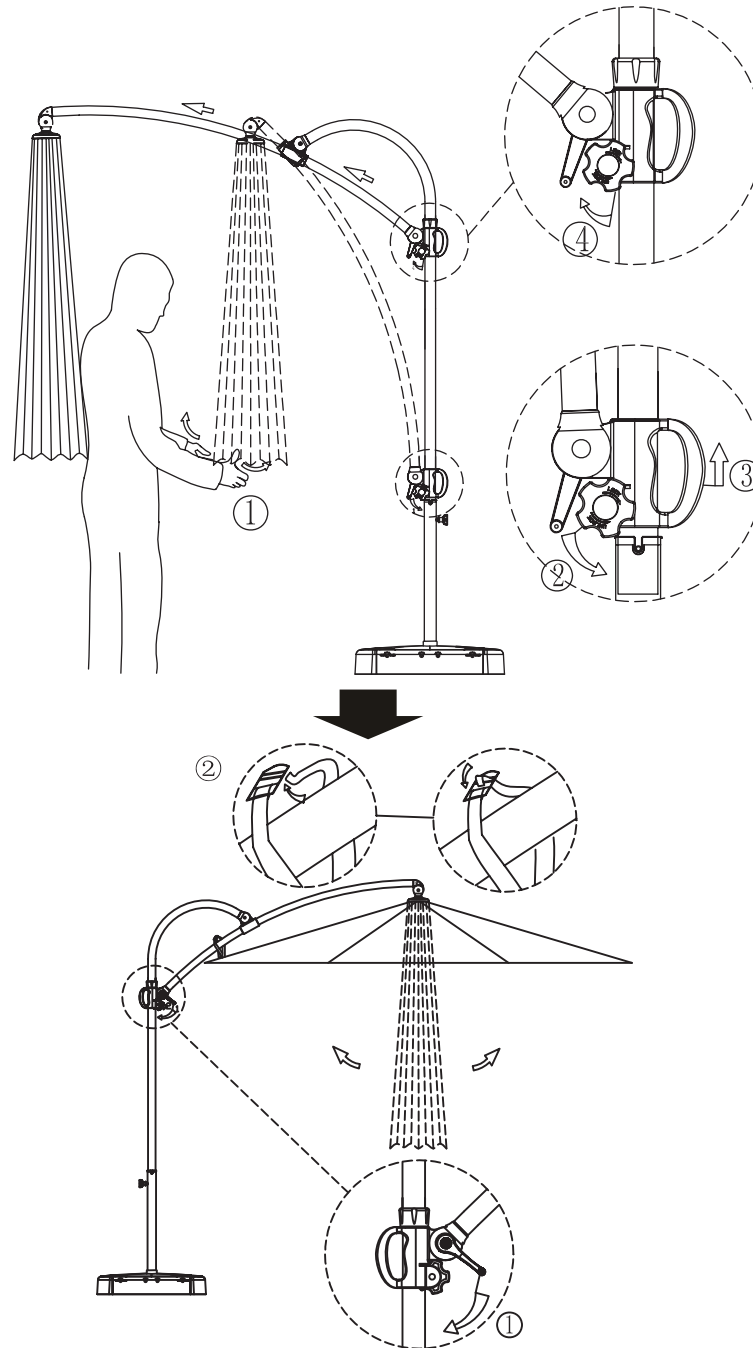
- PUT THE STRAIGHT UMBRELLA POLE INTO THE UMBRELLA HANDLE AS THE PICTURE SHOWS.
- ASSEMBLE THE CURVED UMBRELLA POLE TOGETHER WITH THE STRAIGHT UMBRELLA POLE. TURN SCREW CAP CLOCKWISE TO TIGHTEN.
- INSERT THE WHOLE SUNSHADE INTO THE BASE TUBE "C", AND ROTATE CLOCKWISE UNTIL TIGHTENED.



Assembly Instruction (continued)

9 Before opening the umbrella

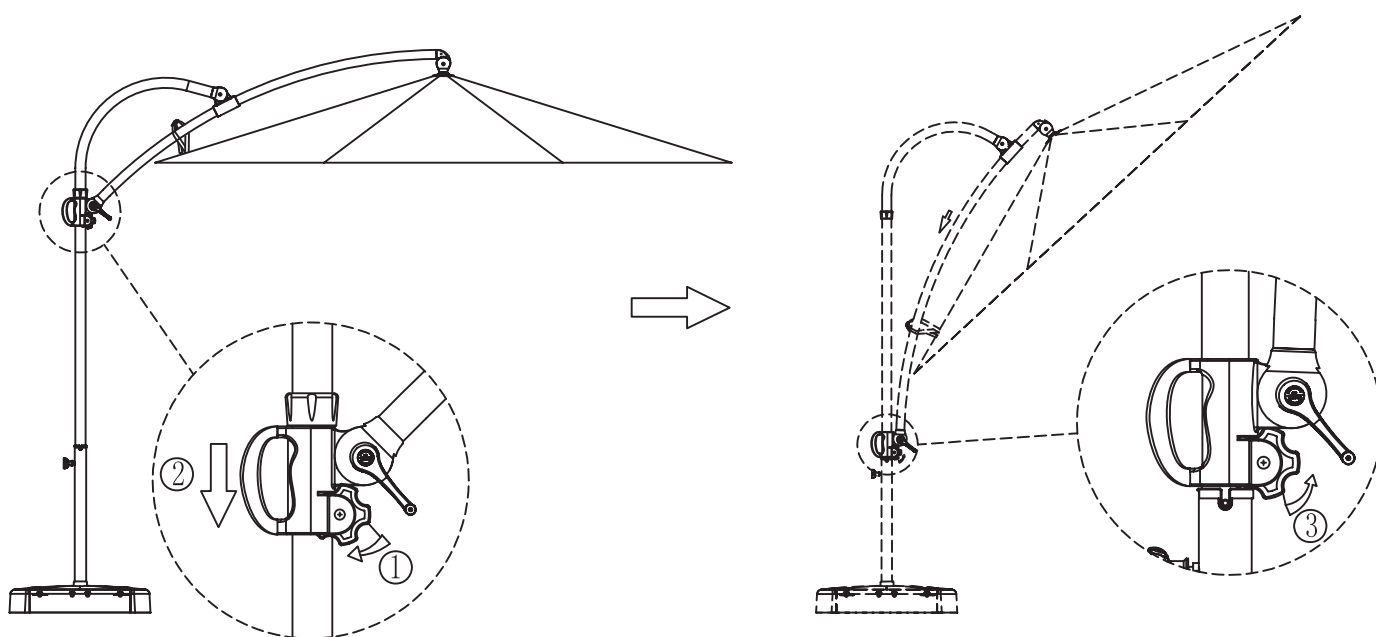
- ❑ SHAKE THE UMBRELLA FABRIC BEFORE OPENING THE UMBRELLA.
- ❑ ROTATE THE KNOB IN A COUNTERCLOCKWISE DIRECTION TO MOVE THE UMBRELLA CRANK HANDLE UPWARD.
- ❑ TIGHTEN THE KNOB ON THE HANDLE CLOCKWISE TO LOCK THE HANDLE IN PLACE.
- ❑ ROTATE THE CRANK CLOCKWISE TO OPEN THE UMBRELLA.



Assembly Instruction (continued)

10 Moving the umbrella crank upwards

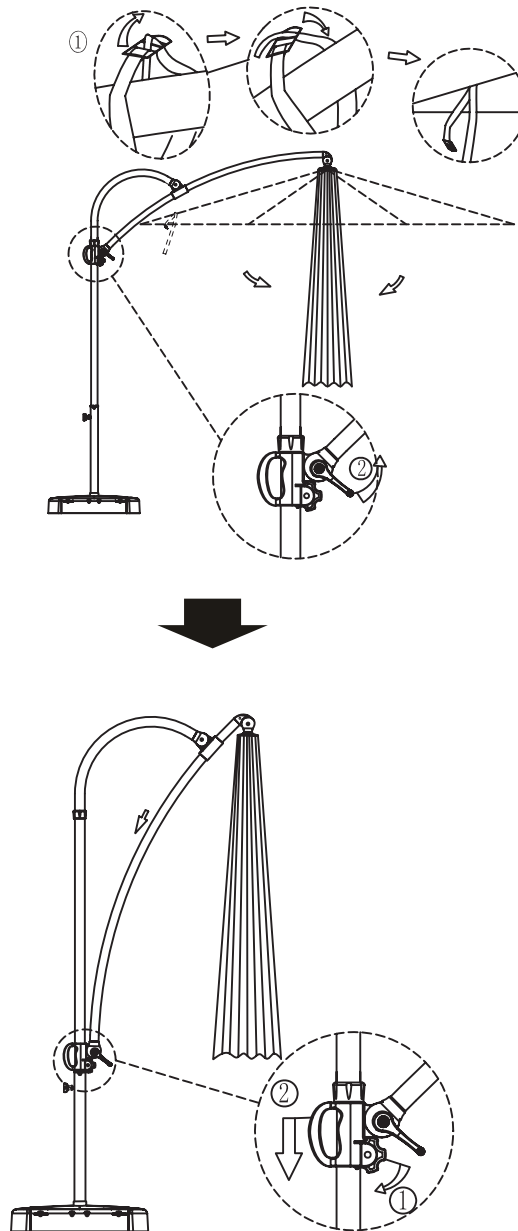
- ROTATE THE KNOB COUNTERCLOCKWISE DIRECTION AND MOVE THE UMBRELLA CRANK HANDLE TO ADJUST TO NEEDING GRADIENT, THEN TIGHTEN THE KNOB CLOCKWISE TO FIX THE UMBRELLA.



Assembly Instruction

11 Use 360 degrees to adjust the umbrella at desired positions

- TURN THE KNOB COUNTERCLOCKWISE FOR A 360 DEGREE ROTATION. HOLD THE POLE OF THE UMBRELLA WITH ONE HAND WHILE ADJUSTING THE HANDRAIL WITH THE OTHER HAND. FIXATE THE UMBRELLA AT A DESIRED POSITION AND LOCK BY TIGHTENING THE KNOB CLOCKWISE.
- TO CLOSE THE UMBRELLA, TURN THE CRANK COUNTERCLOCKWISE.
- WHEN UMBRELLA IS CLOSED, LOOSEN KNOB ON UMBRELLA HANDLE BY TURNING IT COUNTERCLOCKWISE, THEN PULL UMBRELLA HANDLE DOWNWARD.





HOME OFFICE: 1100 Coiner Ct., City of Industry, CA 91748

FAX: 1-626-269-6399

CUSTOMER SERVICE HOT LINE: 1-866-905-4107

SEVICE HOURS: MONDAY-FRIDAY 8:30 AM TO 5:00 PM PST
/ 11:30 AM TO 8:00PM EST

E-MAIL: customerservice@yotrious.com



Please refer to part numbers when reordering

For questions or comments about product:

Email: customerservice@yotrious.com or Call toll-free: 1-866-905-4107

Made in CHINA / Hecho en CHINA

Distributed by Sears, Roebuck and Co., Hoffman Estates, IL 60179

See our extensive assortment of outdoor living products
on-line at www.sears.com and www.kmart.com