

Please carefully read and save these instructions before attempting to assemble, maintain, install, or operate this product. Observe all safety information to protect yourself and others. Failure to observe the instructions may result in property damage and/or personal injury. Please keep instructions for future reference.

Important Operating Instructions



3000LB WINCH

Model: 7253

CALIFORNIA PROPOSITION 65

WARNING: You can create dust when you cut, sand, drill or grind materials such as wood, paint, metal, concrete, cement, or other masonry. This dust often contains chemicals known to cause cancer, birth defects, or other reproductive harm. Wear protective gear.

WARNING: This product or its power cord may contain chemicals, including lead, known to the State of California to cause cancer and birth defects or other reproductive harm. Wash hands after handling.

Important!

When using equipment, a few safety precautions must be observed to avoid injuries and damage. Please read the complete operating manual with due care. Keep this manual in a safe place, so that the information is available at all times. If you give the equipment to any other person, give them these operating instructions as well. We accept no liability for damage or

accidents which arise due to non-observance of these instructions and the safety information herein.

SPECIFICATIONS

Single line rated pull: 3,000 pounds

Motor: Permanent magnet

Braking action: Mechanical and dynamic

Wire rope: 1/5 inch by 34 feet

Weight: 19.8 pounds

CAUTION:

FOR YOUR OWN SAFETY, READ INSTRUCTION MANUAL COMPLETELY AND CAREFULLY BEFORE OPERATING THIS WINCH.

Any failures made in following the safety regulations and instructions may result in an electric shock, fire, and/or serious injury.

SAFETY INSTRUCTIONS

1) Never lift people or hoist loads over people. Do not lift items vertically. This winch was designed for horizontal use only.

2) Do not overload the winch. Use an optional pulley block to double the line if the weight is over 1,000 pounds.

3) Do not attempt to use the winch for prolonged pulls of heavy loads. This winch is designed for intermittent use only and is not meant for constant heavy duty use. Never pull a load for more than one minute at or near the rated load.

4) Never winch with less than five (5) turns of wire rope around the winch drum because the wire rope and fastener may not be able to withstand full load.

5) Avoid continuous pulls from extreme angles. This will cause the wire rope to pile up on one end of the drum, which can cause damage to the rope or winch.

For warranty purchases, please keep your dated proof of purchase. File or attach to the manual for safekeeping.

6) Ensure the input voltage between the terminals of the motor is always 12 or 24 volts in order to reach the maximum rated line pull. The winch can only reach the maximum rated line pull by the first layer of cable around the drum when pulling the loads.

7) Never hook the wire rope back onto itself because this could cause damage to the wire rope. Use a nylon sling.

8) Be sure the winch is securely mounted on a vehicle or other stable object before operation.

9) When moving a load, slowly take up the wire rope slack until it becomes taut. Recheck all connections and ensure the hook and/or nylon sling is properly seated.

10) Do not move your vehicle to assist the winch in pulling the load. The winch and vehicle both pulling could overload the wire and winch.

11) Never be on or around the winch drum when the winch is under load.

12) Do not cross over or under the wire rope when the winch is under load or moving a load.

13) When using the winch to move a load, the vehicle engine should be running during winch operation. If considerable winching is performed with the

engine off, the battery may be too weak to restart the engine.

14) Never release the free spool clutch when there is a load on the winch.

15) After operation, release the load. Do not allow the cable to tighten anymore.

16) Always stand clear of the wire rope, hook and wench.

17) Inspect the rope and equipment frequently. A frayed wire rope with broken strands should be replaced immediately and not used. Use only factory approved switches.

18) Use heavy leather gloves when handling the wire rope. Do not let the rope slide through bare hands.

19) Always use the safety pull strap when guiding the wire rope in or out.

20) After operating the winch, re-spool the cable around the drum tightly.

21) Do not operate the winch under the influence of drugs or alcohol.

22) Do not alter or weld any part of the machine. It could void the warranty.

INSTALLATION

1) Mount the winch on the vehicle or steady object. The

winch must be mounted with the wire rope in the unrefined direction.

2) Route the lines from the switch. One goes to the motor and the other to the battery. Connect the red line to the positive terminal and the green (or black) line to the negative terminal of the 12 volt battery. Connect the other two lines to the terminal on the motor (fig 4).

3) Check the direction the drum will turn. Pull and turn the clutch knob in the OFF position. The drum can be turned freely. Pull out the cable from the drum and then engage the clutch by turning the knob to the IN position. Push the "cable in" button on the handheld. If the cable is re-spooling then the connection is correct. Otherwise, change the line connected to the motor and repeat.

OPERATION

1) Pull and turn the clutch knob to the OFF position so that the drum can be turned freely by hand.

2) Grab the cable assembly hook and pull the cable to the desired length by the safety pull strap. Attach to the item that is going to be pulled. Check that there are at least 5 turns of wire rope left on the drum before operating the winch.

3) Engage the clutch by turning the knob to the IN position. The clutch must be fully engaged before the machine is used. Do not engage the clutch knob while the drum is turning. The knob has been adjusted and permanently locked into place at the factory. Do not attempt to readjust the knob.

4) Push and hold the CABLE IN button on the handheld and the cable will re-spool. Push and hold the CABLE OUT button to reverse directions. Wait until the motor stops before reversing directions.

5) Re-spool the cable after use.

MAINTENANCE

1) Periodically check the tightness of the mounting bolts and electrical connections. Remove all of the dirt and corrosion that may have accumulated on the connections.

2) Do not attempt to disassemble the gearbox. It will void the warranty and repairs should be done by an authorized repair center.

3) The gearbox has been lubricated in factory and additional internal lubrication is not required.

Replacing the wire rope

1) Engage the clutch by turning the knob to the IN position.

2) When inserting the wire rope into the drum, insert it into the correct end of the hold provided (fig 5). Tighten the set screw securely.

3) Re-spool the wire rope around the drum. Always replace a wire rope with an identical replacement part.

Troubleshooting Guide

Symptom	Possible Cause	Solution
Motor will not operate or runs in one direction only	Switch is inoperative	Replace switch
	Broken wires or bad connection	Check for poor connections
	Defective motor	Replace or repair motor
Motor runs but drum does not turn	Clutch not engaged	Engage clutch
Motor runs but with insufficient power or line speed	Weak battery	Recharge or replace battery. Check battery terminals for corrosion. Clean as required
	Defective motor	Repair or replace motor
Motor overheating	Winch running for too long	Allow winch to periodically cool down
	Defective motor	Repair or replace motor

Diagrams

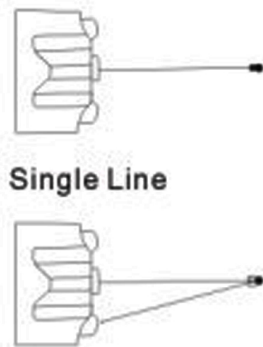


Figure 1

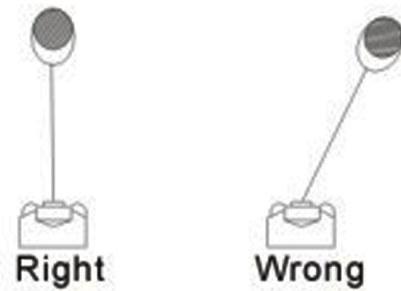


Figure 2

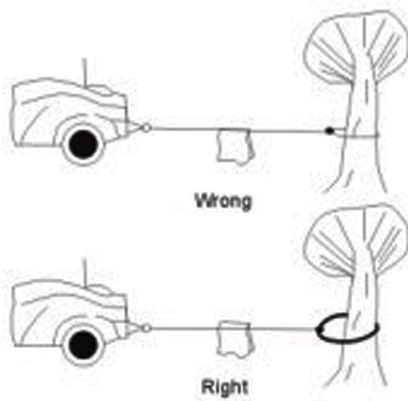


Figure 3

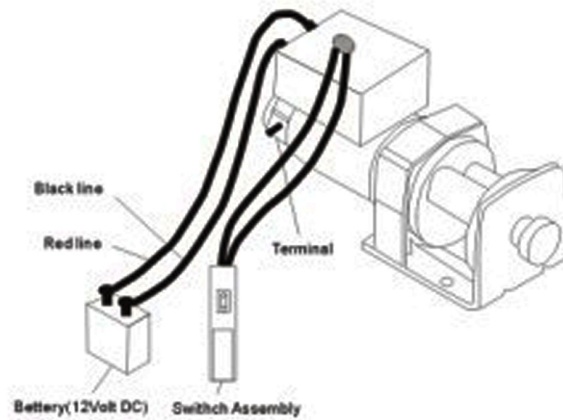


Figure 4

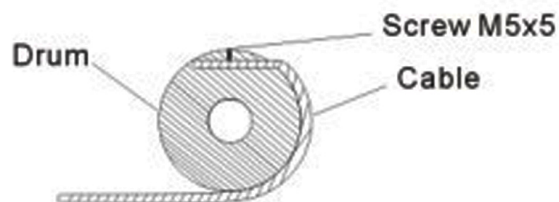


Figure 5

Limited Manufacturer Warranty

North American Tool Industries (NATI) makes every effort to ensure that this product meets high quality and durability standards. NATI warrants to the original retail consumer a 1-year limited warranty from the date the product was purchased at retail and each product is free from defects in materials. Warranty does not apply to defects due directly or indirectly to misuse, abuse, negligence, or accidents, repairs or alterations, or a lack of maintenance. NATI shall in no event be liable for death, injuries to persons or property, or for incidental, special, or consequential damages arising from the use of our products. To receive service under warranty, the original manufacturer part must be returned for examination by an authorized service center. Shipping and handling charges may apply. If a defect is found, NATI will either repair or replace the product at its discretion.

DO NOT RETURN TO STORE

For Customer Service:

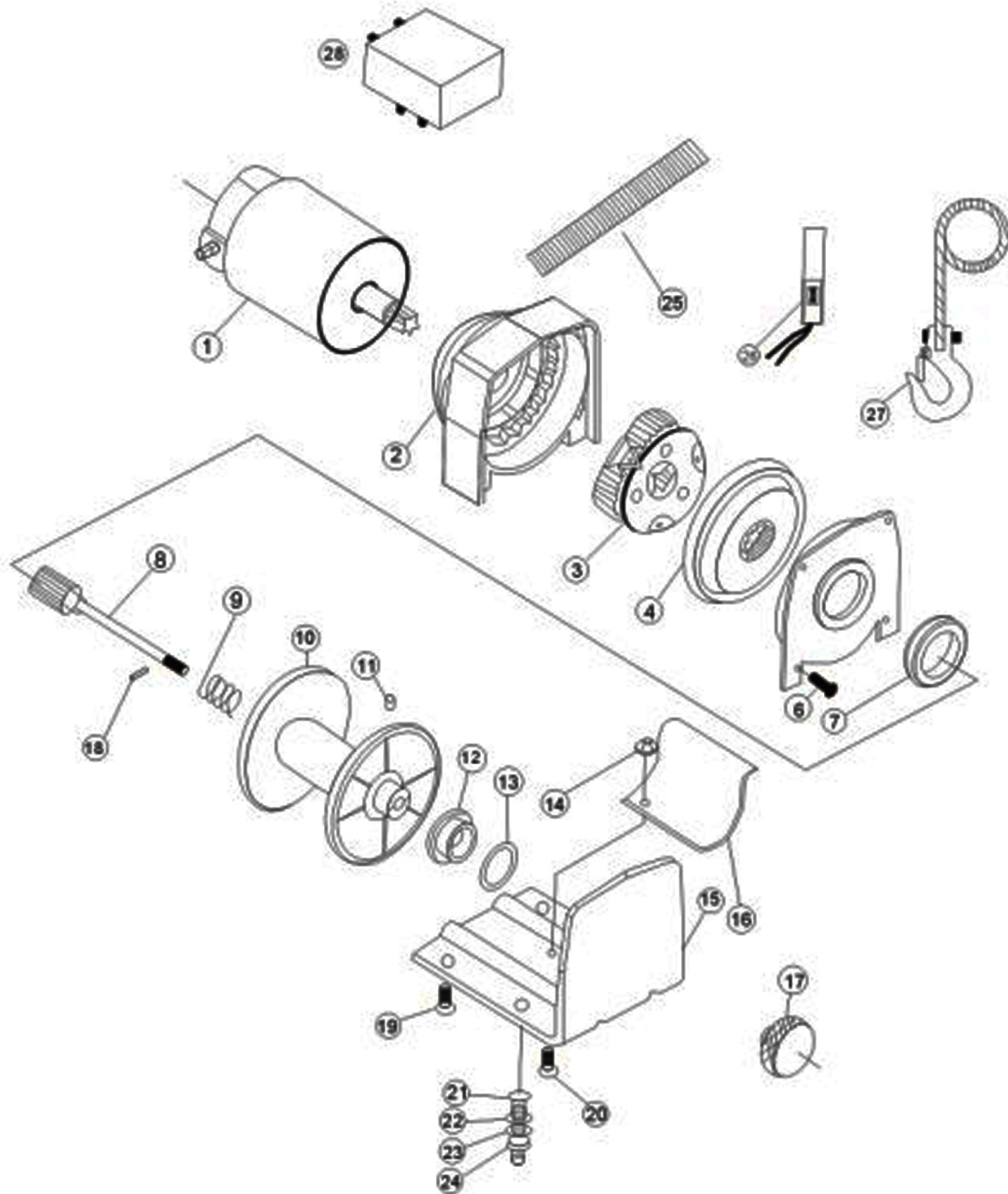
Email: feedback@natitools.com or Call 1-800-348-5004



3000LB WINCH

Model: 7253

Parts List



Call 1-800-348-5004 for assistance or replacement parts

Please provide the following information:

- Model number
- Part description and number as shown in parts list
- Serial number (if any)

Address any correspondence to:

North American Tool Industries
84 Commercial Rd
Huntington, IN 46750

Item #	Qty	Description
1	1	Motor
2	1	Stationary Gear Housing Assembly
3	1	T-Series Carrier Assembly
4	1	T-Series Rotator Gear
5	1	Drum Support Plate
6	4	Pan Head Screw M4x12
7	1	Drum Support Brushing
8	1	Clutch Assembly
9	1	Spring
10	1	Drum Assembly
11	1	Screw M5x5
12	1	T-Series Bushing
13	1	Thick Flat Washer
14	2	Hex Flange Nut M5
15	1	T-Series Base Plate Assembly
16	1	Tension Plate
17	1	T-Series F/W Knob Assembly
18	1	Elastic Pin 2.5x14
19	2	Hex Screw M6x16
20	2	Screw
21	2	Screw M8x30
22	2	Washer Flat 08
23	2	Lock Washer 08
24	2	Nut M8
25	1	Safety Pull Strap
26	1	Switch Assembly
27	1	Cable Assembly
28	1	Control Box