

POWER MARKETING

Outdoor Power Equipment

Chainsaws & Cases
Log Splitters
Wood Chippers
Stump Grinders
Brush Cutters
Leaf Blowers

Hot Water Pressure Washers
Cement Saws
Compactors
Earth Augers
Trenchers
Power Trowels

www.QVTools.com



QV TOOLS, LLC. (West)
2731 Crimson Canyon Drive
Las Vegas, NV 89128
Toll Free: 1-800-344-3371



QV TOOLS, LLC. (East)
30727 Beverly Road
Romulus, MI 48174
Toll Free: 1-800-344-3371



STRENGTH IN MANUFACTURING - An Introduction to QV Tools

QVTools (Las Vegas, NV) is a financially sound company with strong corporate leadership. With over 100 years in combined Executive experience in Power Equipment & Tools, QV Tools supplies products and services from Dual distribution centers located in Detroit and Las Vegas. QV Tools Designs and Manufactures a number of PowerKing machines & components including the molds that produce our universal blow-molded chainsaw case. Our vertically integrated manufacturing capabilities provide faster response times and superior quality at lower costs. At PowerKing, we have the ability to consistently meet and/or exceed quality and on time demand expectations.



Blow Molding Production



Machinery Development



Mold Making



Automation

The result of our dedication to quality is zero-defect, on-time delivery.

Six manufacturing plants operate over 200 state-of-the-art blow molding production lines in North America. Each plant is registered to the ISO9001-2008 quality standard.



*Applies to designated blow molded products & components



POWER-KING[®]

Combination Chainsaw Packages



Models Available

40CC

14 IN

18 IN

14/18 COMBO

45CC

16 IN

20 IN

16/20 COMBO

57CC

18 IN

22 IN

18/22 COMBO



PK401418



PK451620



PK571822

POWER KING[®]

SUPERSTEEL SERIES



Features:

A SMART CHAIN SYSTEM

- On demand oil, gear driven, adjustable flow (Saves up to 50% on oil usage)
- Low kickback chain design

B SUPERSTEEL BAR

- Thicker, stronger, long lasting bar guides

C BUMPER SPIKE

- Thicker steel
- Guides and holds saw for secure cuts

D ULTRA MUFFLER

- Ultra quiet at 97.8dB sound pressure

E QUICK REACTION CHAIN BRAKE

- Large thick paddle, quick chain stop
- Safe chain control

F VIBRATION ISOLATOR SYSTEM

- Low 7.44 m/s² spring damper handle (Enhances feel and offers a more secure grip)
- Soft, Durable Pro Grade Grip

G ERGONOMIC BODY DESIGN

- Balanced weight and easy handling

H FAST ACTION COVER

- Remove top cover with a snap (Access air filter, spark plugs quickly)

L SMOOTH START

- Auto/off choke, smooth pull recoil, primer bulb (Easy to cold start)

M FULL FUNCTION REAR HANDLE

- Sure grip finger grooves, glove friendly on/off switch
- Room for work boot while starting

N XL FUEL/ OIL CAPS

- Large openings for easy fueling
- Rubber seals

O POWER KING ENGINE

- 40CC – 45CC – 57CC
- 14, 16, 18, 20, 22 inch bars.

Other: EPA, CE, EAC & PCT Certified, CDI Ignition, Hardened Steel Drive Gear, Heavy Duty Bearings, Certified Spark Arrestor, Easy Clean Filter

POWER KING[®]

CHAINSAWS

SPECIFICATION	40CC	45CC	57CC
Fuel tank capacity	10.93 oz	24.69 oz	24.69 oz
Oil tank	7.41 oz	8.47 oz	8.47 oz
Oil feeding system	Cam automatic	Cam automatic	Cam automatic
Pitch	3/8"	.325"	.325"
Gauge	.050	.058	.058
Bar Length & Chain Model#	14" PK4014 & 18" PK4018	16" PK4516 & 20" PK4520	18" PK5718 & 22" PK5722
Net Item weight	11 lbs	12.38 lbs	12.38 lbs
Horsepower	2 hp	3 hp	3.5 hp
Fuel: Gas/Oil Mix	40:1	40:1	40:1
Type Single Cylinder	2 stroke	2 stroke	2 stroke
Ignition	C.D.I	C.D.I	C.D.I

Reusable Fiber Filter plus
Easy Spark Plug Access



POWER KING®

40CC CHAINSAWS



PK4014



PK4018



PK401418



Bar covers, 3 in 1 Wrench, & Fuel Mixing Bottle included

POWER KING[®]

45CC CHAINSAWS



PK4516



PK4520



PK451620

Bar covers, 3 in 1 Wrench, &
Fuel Mixing Bottle included

POWER-KING[®]

57CC CHAINSAWS



PK5718



PK5722



PK571822

Bar covers, 3 in 1 Wrench, &
Fuel Mixing Bottle included



BAR AND CHAIN PROGRAM

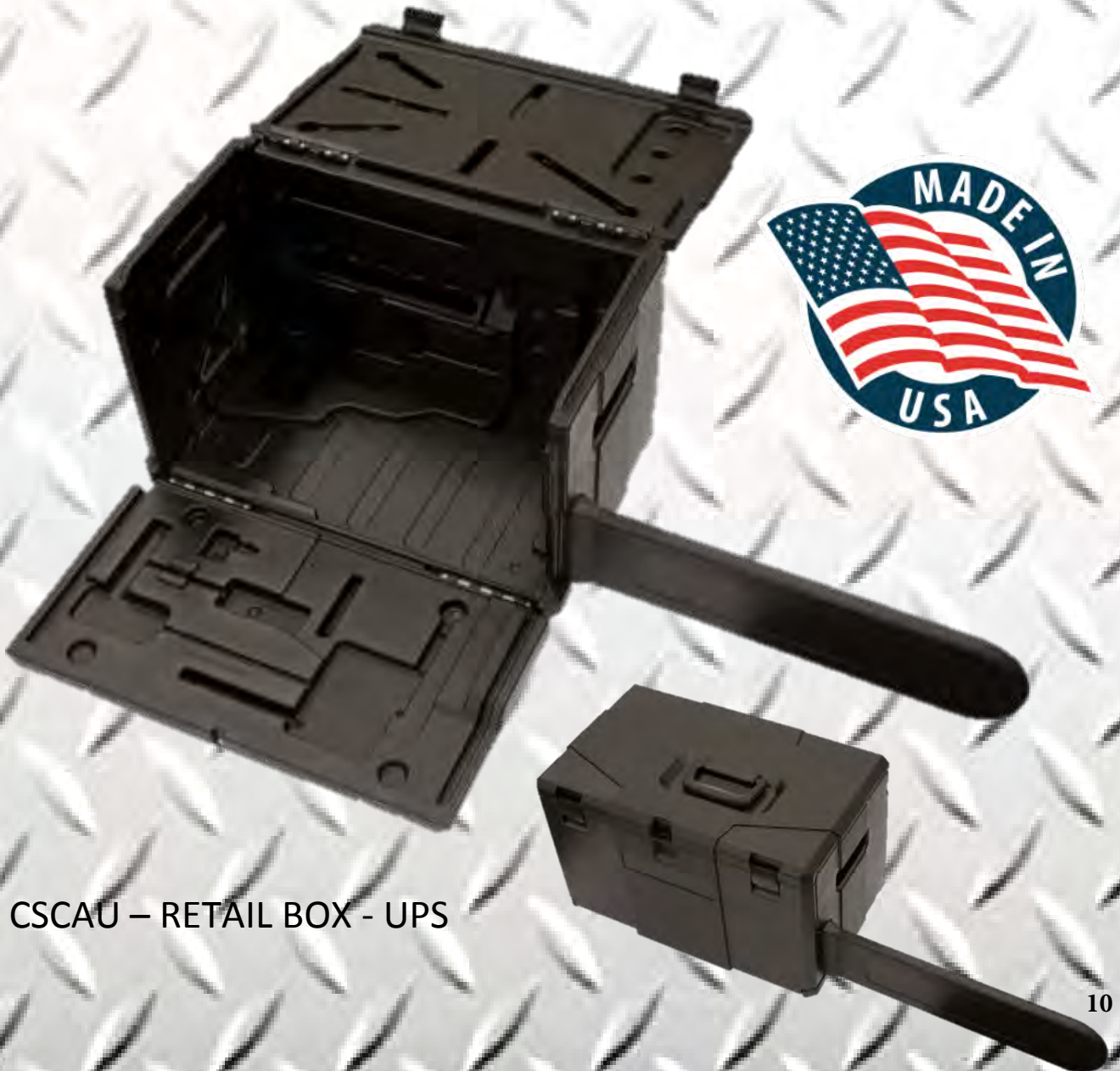


PART SKU	ITEM	CASE PACK QTY	INNER PACK TYPE
PK4014038050	40CC 14IN CHAIN	12	PEG HOOK BOX
PK4018038050	40CC 18IN CHAIN	12	PEG HOOK BOX
PK4014B	40CC 14IN BAR	12	BLISTER
PK4018B	40CC 18IN BAR	12	BLISTER
PK4516325058	45CC 16IN CHAIN	12	PEG HOOK BOX
PK4520325058	45CC 20 IN CHAIN	12	PEG HOOK BOX
PK4516B	45CC 16 IN BAR	12	BLISTER
PK4520B	45CC 20 IN BAR	12	BLISTER
PK5718325058	57CC 18 IN CHAIN	12	PEG HOOK BOX
PK5722325058	57CC 22 IN CHAIN	12	PEG HOOK BOX
PK5718B	57CC 16 IN BAR	12	BLISTER
PK5722B	57CC 22 IN BAR	12	BLISTER

POWER KING®

PowerKing Universal 20" Chainsaw Carrying Case

Made in USA PowerKing chainsaw case with removable scabbard. Full long box with top and front locking doors. Blow-molded pockets for tools, scrench, files, manuals, chains, bar oil. Top carry handle with dual side lift pockets. Protects your saw (with bar sizes up to 18") & keeps all your tools handy.



CSCAU – RETAIL BOX - UPS

POWER KING®

MARKET METRICS ----- PowerKing 20" Chainsaw Carrying Case

- Each year over 3 million new chainsaws are sold in the United States, in addition with the millions of older chainsaws in circulation today. While some of the new chainsaws include a case there are many more pre-owned saws in need of storage cases. Opportunity is now to serve this market need at a value price for thousands of customer's new and used chainsaws.
- Current chainsaw cases of similar quality retail for \$49.99 – 69.99, a high price for a case. The PowerKing \$39.99 MSRP will capture this market with a consumer price point well below the current market price and USA quality. At \$39.99, this price point is proven to drive sales..

POWER KING®	Husqvarna Lowes	ECHO Home Depot
		
Under \$30 Wholesale \$39.99 MSRP	Instore \$49.99 Retail	Online only \$39.97 Retail + shipping

POWER-KING®

RETAIL AND DROP SHIP READY

**OPTIMIZED SPACE SAVER
RETAIL PACKAGING**



POWER-KING®

**IN STORE OR DROP SHIP
UPS READY**



12

POWER KING[®]

34 Ton Ram - Kinetic Log Splitter

PK0303 - Kohler Engine



PK0302 - Briggs Engine (DI)



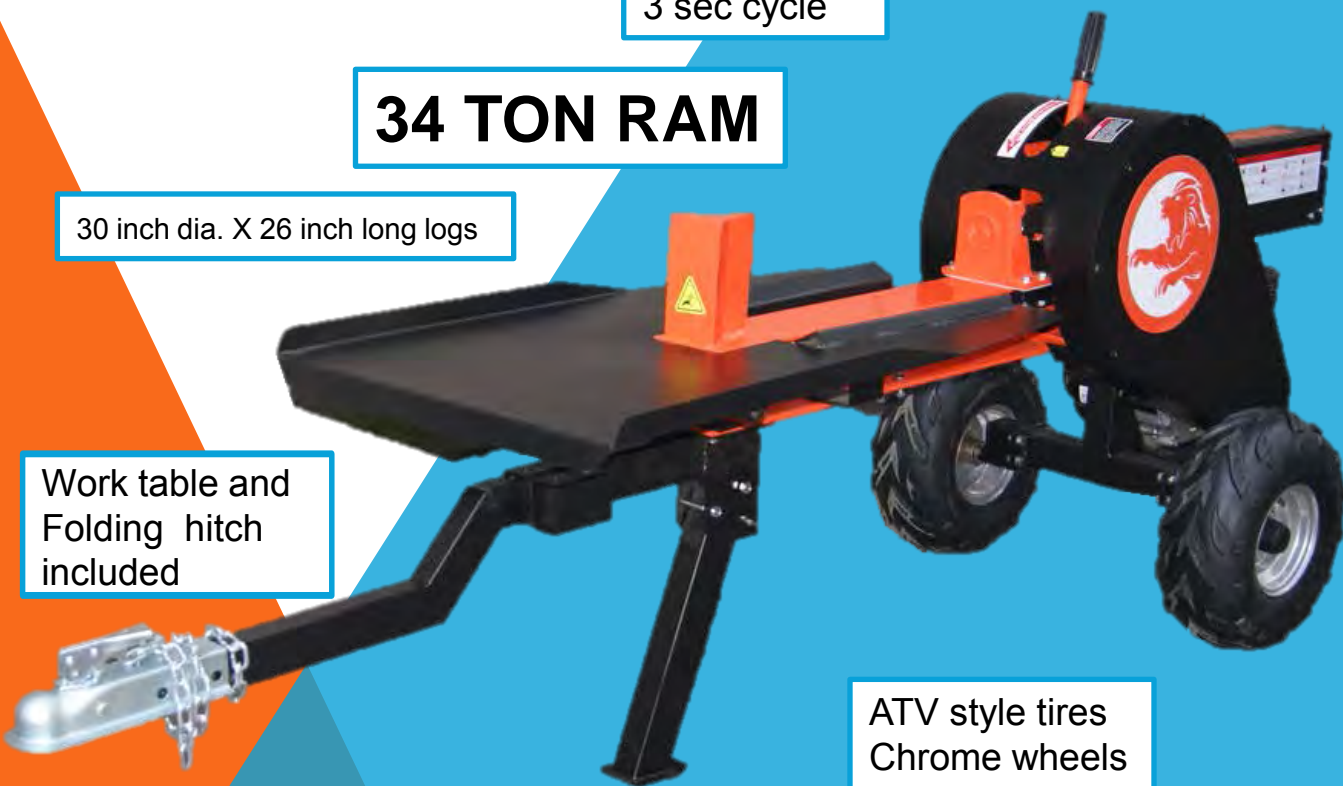
Kinetic transmission spline hardening to HRC42-48 ultra durable. Out splits hydraulic splitter 6 to 1. CE certified.

3 sec cycle

34 TON RAM

30 inch dia. X 26 inch long logs

Work table and
Folding hitch
included



ATV style tires
Chrome wheels

Over 10,000 Kohler and National Altaquip Service centers for Customer Satisfaction.

WWW.QVTOOLS.COM

3 Yr Warranty PARTS and LABOR

POWER KING[®]

34 Ton Kinetic Log Splitter FEATURES AND SPECS



Professional grade - 3 second super steel ram

Powered with Kinetic ram force to split logs fast and easy. Includes 3 year warranty on all parts and labor, work table, removable hitch, all terrain 10" tires on chrome rims, expansion splitter wedge, case hardened ram.

Feature packed for professional performance

Non Hydraulic professional splitter design eliminates hoses, pumps, valves, cylinders, filters and couplers. This machine is built for power and speed. A serious new breed of PowerKing equipment that out splits hydraulics 6 to 1.

MODEL: PK0303 – 6.5 HP KOHLER



MODEL: PK0302 – 6.5 HP BRIGGS (DI Only)



POWER KING[®]

MARKET METRICS AND COMPS: KINETIC LOG SPLITTERS

POWER KING [®]		DR POWER	SuperSplit	Agri-Fab
				
	PK0302 & PK0303	DR-K34	HD	BFS 614AB
TONNAGE	34 TON	34 TON	32 TON	34 TON
WARRANTY	3 YEAR PARTS AND LABOR	\$249.99 OPTION FOR 3 YEAR	6MO PARTS ONLY – NO SERVICE CENTERS	1st YR parts only 2 nd /3 rd YR limited parts covered.
WORK TABLE	INCLUDED	\$199.99 OPTION FOR TABLE	\$274.99 OPTION FOR TABLE	INCLUDED
2" BALL HITCH	INCLUDED	\$79.99 OPTION FOR BALL HITCH	INCLUDED	INCLUDED
Engine Model	PK / BS / KOHLER	SUBARU 169CC	HONDA 6.5 HP	SUBARU 169CC
CE CERTIFIED	YES 100%	NO CERTIFICATION	NO CERTIFICATION	NO CERTIFICATION
LOG SIZE	30D X 26L	26D X 24L	20D X 24L	30D X 24L
FLYWHEEL RPM	520 rpm	400 rpm	420 rpm	365 rpm
COST	UNDER \$1400	Splitter \$2299 Warranty \$250	Splitter \$2894 Worktable \$274	Splitter \$3199 ONLINE ONLY
MSRP	PK0302 MSRP \$1899.99 84 qty/cntr	Worktable \$200 Ball Hitch \$80 Shipping \$580 TOTAL \$3409	Shipping \$580 TOTAL \$3748	Shipping \$580 TOTAL \$3779

POWER KING[®]

34 TON KINETIC – HORZ

2 WAY SPLIT

PK0302 – BRIGGS (DI)
PK0303 – KOHLER

Professional grade - 3 second
super steel ram



KOHLER
engines

BRIGGS & STRATTON



15 TON – HORZ

2 WAY SPLIT

PK0304 – POWERKING



22 TON – HORZ/VERT

4 WAY SPLIT

PK0308 – BRIGGS (DI)
PK0309 – KOHLER



30 TON – HORZ/VERT

4 WAY SPLIT

PK0311 – BRIGGS (DI)
PK0312 – KOHLER



36 TON HORZ/VERT

4 WAY SPLIT

PK0314 BRIGGS (DI)
PK0315 KOHLER



50 TON – HORZ/VERT

4 WAY SPLIT

PK0317 – BRIGGS (DI)
PK0318 – KOHLER



60 TON – HORZ/VERT

4 WAY SPLIT

PK0320 – BRIGGS (DI)
PK0321 – KOHLER



LOG SPLITTER MODELS AND SPECIFICATIONS

POWERKING LOG SPLITTERS	15 TON	22 TON	30 TON	36 TON	50 TON	60 TON
Model Number:	PK0304	PK0309	PK0312	PK0315	PK0318	PK0321
UPC:	0 37229 99042 3	0 37229 99047 8	0 37229 99049 2	0 37229 99053 9	0 37229 99056 0	0 37229 99059 1
Manufacturer:	POWERKING	POWERKING	POWERKING	POWERKING	POWERKING	POWERKING
Made in USA:	No	No	No	No	No	No
Pre-Assembled:	No	No	No	No	No	No
Engine						
Engine Brand:	POWERKING	Kohler	Kohler	Kohler	Kohler	Kohler
Engine Starter:	Recoil Start	Recoil Start	Recoil Start	Recoil Start	Recoil Start	Electric Start Battery Included
HP/CC:	6.5 HP	6.5 HP	6.5 HP	14 HP	14 HP	14 HP
Idle Control:	Yes	Yes	Yes	Yes	Yes	Yes
Log Capacity						
Max Log Length:	21.0 Inches	25.0 inches	25.0 inches	26.0 inches	26.0 inches	28.0 inches
Wedge						
Wedge Style:	2-way	4-way	4-way	4-way	4-way	4-way
Hydraulics						
Auto Return:	Yes	Yes	Yes	Yes	Yes	Yes
Hydraulic Filter:	Yes	Yes	Yes	Yes	Yes	Yes
Hydraulic Oil Included:	No	No	No	No	No	No
Cylinder Diameter:	3.0 Inches	4 inch	4.5 inches	5.0 inches	6.0 inches	6.0 inches
Towing						
Towable:	No	Yes	Yes	Yes	Yes	Yes
D.O.T. Lights:	No	No	No	No	No	No
Fenders:	No	Yes	Yes	Yes	Yes	Yes
Hitch Ball Size:	No	2 inch	2 inch	2 inch	2 inch	2 inch
Max Towing Speed:	No	30 MPH	30 MPH	30 MPH	30 MPH	30 MPH
Accessories						
Log Cradles:	Included	Included	Included	Included	Included	Included
Jack Stands:	Included	Included	Included	Included	Included	Included
Overview						
Shipping Weight:	418.88 Lbs	485 Lbs	500 Lbs	617 Lbs	705 Lbs	738 Lbs
Shipping Dimensions:	44.88L x 22.05W x 20.47H	70.47L x 20.08W x 19.69H	70.47L x 20.08W x 19.69H	70.47L x 20.08W x 19.69H	84.65L x 22.83W x 22.83L	84.65L x 22.83W x 22.83L
Consumer Warranty:	1 Year	3 Years	3 Years	3 Years	3 Years	3 Years
Commercial Warranty:	90 Days	90 Days	90 Days	90 Days	90 Days	90 Days

POWER KING[®]

EXTREME DUTY 4-3/4" WOOD CHIPPER



14 HP

4 3/4" CHIPPER

SKU PK0902 – 13.5 HP BRIGGS Engine (DI)

SKU PK0903 – 14 HP KOHLER Engine

RECOIL START

PRODUCT SIZE: 71L x 32W x 45 H

BELT: 2 HIGH QUALITY V-BELTS

BLADE LENGTH: 12 inch,

TWIN REVERSIBLE BLADES

CHIPPING CAPACITY: 4.75 inch

ADVANCED CENTRIFUGAL CLUTCH >

ADJUSTABLE DISCHARGE CHUTE



WWW.QVTOOLS.COM

POWER KING[®]

STUMP GRINDER

SKU PK0803 – 14 HP KOHLER



SKU PK0802 – 13.5 HP BRIGGS (DI)



RECOIL START

BELT: 2 HIGH QUALITY V-BELTS

BLADE NUMBER: 9 CUTTERS

CHIPPING CAPACITY: 4.75 IN

CUTTING WHEEL DIAMETER: 12 IN

CUTTING WHEEL THICKNESS: 3.5 IN

BRAKE: DRUM BRAKE

CE CERTIFIED



SUPER STEEL SERIES

14 HP STUMP GRINDER



POWER KING®

Commercial Hot Water Gasoline - Oil Fired + Cold Water Pressure Washers

Hot & Cold Features

Pumps (General Pump)

- Commercial Duty Triplex Plunger Pump
- Oil Bath Crank Case
- Stainless Valves
- Brass Manifold • Direct Drive
- Thermo Pump Protector

Engines (6.5 HP & 14 HP Kohler)

- Gasoline Driven • Efficient • Serviceable

Frame

- All Welded • Powder Coated
- 12 Gauge Bent Steel Roll Cage
- Lifting Bar
- 3/4" Threaded Axles Welded to the Frame
- 13" Pneumatic Wheels Attached with Lock Nuts
- 10 Gallon Poly Fuel Tank
- Hose Reel Mounting Plate
- Stationary Skid Frame also available

Includes

- 36" Gun and Wand Assembly with Quick Coupler System
- 0°/15°/25°/40° Nozzles
- 1 Soap Nozzle
- Downstream Chemical Injection System
- 50 Feet of High Pressure Hose

Options & Accessories

- Hose Reel • Rotary Nozzle
- Drain Cleaning/Jetter Kit



Utilized by a multitude of businesses for a wide variety of cleaning needs. From a simple oil field application to daily construction and farm use.

HOT WATER

PK0701- 1500PSI (2HP electric 2.2GPM)

PK0702 - 2700PSI 6.5HP 3GPM

PK0703 - 4000PSI 14HP 3.5GPM

3.5 GPM @ 4000 PSI



Burners (Wayne - 12 Volt)

- Oil Fired
- Adjustable Thermostat
- On/Off Switch
- North American Made
- Serviceable
- 140°F Temperature Rise
- Dependable

Heating Coil

- Schedule 80 Pipe
- Elliptically Wound
- Stretched
- No Seam Welds
- Structurally Braced to Reduce Vibration & Pipe Wear
- Sealed Ceramic Blanket
- Stainless Steel Housing

COLD WATER

COLD WATER WASHERS

PK0704 - 2700PSI 6.5HP 3GPM

PK0705 - 4000PSI 14HP 3.5GPM



POWER KING[®]

12" CONCRETE SAW

KOHLER
engines

PK0101-O

Kohler 6HP with Quad
Clean 4 stage cyclonic Filter

4 inch Adjustable
Cutting height.

Locking
Throttle

Longer back
saver handle

Industrial grade
Wheels with
Sealed Bearings

Lift off Water Tank
with quick release
hoses

Quick release
tank

Adjustable Guide with 3in offset

12" Diamond Blade
(Included)

National Service centers and
24 hour replacement parts

3 Yr. Parts & Labor Warranty

POWER KING[®]

CEMENT SAW MARKET METRICS AND COMPS

POWER KING [®]		MK	Husqvarna	Wacker
				
SKU	PK0101-O	MK-CX3	FS 309	BFS 614AB
Blade Speed (RPM)	3600 rpm	3600 rpm	3600 rpm	3600 rpm
Arbor Size (in.)	1 inch	1 inch	1 inch	1 inch
Cutting Depth (in.)	4 inch	4 inch	4.6 inch	4 inch
Blade Diameter (in.)	12 inch Diamond Included	BLADE NOT INCLUDED \$159.99	BLADE NOT INCLUDED \$189.99	BLADE NOT INCLUDED \$149.99
Engine Model	KOHLER	HONDA GX	ROBIN	HONDA GX
WATER TANK	YES portable	NO WATER TANK	WATER TANK extra \$103.50	NO WATER TANK
Displacement (cc)	203cc	163cc	8.9HP	160cc
Warranty	3 YEAR PARTS AND LABOR	1 yr – additional \$129.99 for 1 yr	1 YR parts only	1 YR parts only
COST	Blade included	Saw \$1649.99	Saw \$1570.99	Saw \$1499.99
MSRP	Tank included	Blade \$159.99	Blade \$189.99	Blade \$149.99
	TOTAL	Tank N/A	Tank \$103.50	Tank N/A
	UNDER \$900.00	TOTAL \$1809.98	TOTAL \$1864.48	TOTAL \$1649.98



USA PARTS AND SERVICE

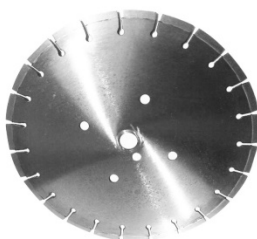
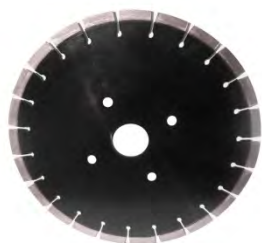
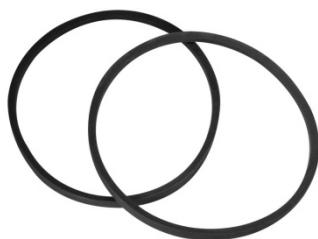
PowerKing provides nationwide service with over 3000 service centers.

Parts are IN STOCK and ship from our DETROIT or LAS VEGAS DCs

DIRECT TO REPAIR CENTER SAME DAY AS ORDERED

Common standard
replacement parts

Available online at
Qvtools.com



Replacement parts in stock –
ship same day



All parts are simple to install within minutes using common tools. Customer service technicians are also provided at 1-800-344-3371 8AM-4PM PST Mon - Fri

POWER KING[®]

12" CEMENT SAW



PowerKing Model PK0101 is built for performance power with quick release water tank and dual V belt drive.
12 IN Diamond blade included.

POWER KING®

CONSTRUCTION GRADE LOW VIBRATION PLATE COMPACTORS



3500 LB - PK0201 6HP

4800 LB - PK0202 6HP



ENCLOSED VIBRATORY
COMPACTOR 3500 AND 4800 LB
FORCE KOHLER COMMAND PRO
ENGINE ENCLOSED 4 STAGE AIR
FILTER



MODEL	PK0201	PK0202
Compaction depth	10.0 in	12 in
Travelling speed	82 ft/min	82 ft/min
Centrifugal force	3500 lbs	4800 lbs
Frequency V.P.M	5000	5400
Engine brand	KOHLER CH260	KOHLER CH260
Filter system	4 STAGE	4 STAGE
N.W	161 LBS	176 LBS
G.W	183 LBS	198 LBS
40HQ QTY	288	288
SERVICE CENTERS	NATIONAL	NATIONAL
Warranty	3 YR	3 YR

POWER KING[®]



PK1002 (DI)
6.5 HP

PK1003
6.5 HP



18 INCH TRENCHER

ENGINE: Briggs or Kohler RECOIL START

TRENCHER DEPTH: 18 INCH

TRENCH SPEED: 32FT/HOUR

BLADE NUMBER: 21 cutters

TRENCH WIDTH: 4 INCH

TRENCH CAPACITY: 32FT/HOUR

WARRANTY: 3 YRS



POWER KING[®]



PK1005 (DI)
13.5 HP

PK1006
14 HP



24 INCH TRENCHER

ENGINE: Briggs or Kohler RECOIL START

TRENCHER DEPTH: 24 INCH

TRENCH SPEED: 32FT/HOUR

BLADE NUMBER: 21 cutters

TRENCH WIDTH: 4 INCH

TRENCH CAPACITY: 32FT/HOUR

WARRANTY: 3 YRS



POWER KING®

PowerKing Service Centers are now 10,000 plus strong.

We are proud to announce coverage for ALL PowerKing equipment.

KOHLER and ALTAQUIP are your authorized PowerKing Specialists.

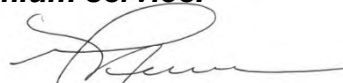


ALTAQUIP is the premier North American service solution provider for powered equipment and tools specializing in fast turn-around for outdoor power equipment . ALTIQUIP is authorized to perform warranty repairs on over 100+ manufacturer's brands including PowerKing, Kohler, Craftsman, Briggs & Stratton, Honda, Husqvarna, MTD, and Campbell Hausfeld.

"PowerKing has partnered with Altaquip to bring the best experience. Combined with KOHLER service centers, plus 2 Powerking distribution centers in Detroit and Las Vegas, PowerKing is service center strong for premium service."

Contact Representative: Power 10 Marketing
power10marketing@gmail.com

www.QVTools.com


Gregg Neuer