

# Quick-Start Guide

## Wyse® P Class Zero Clients, Model PxN

Product: P25

See accompanying documents in the shipping carton for License Agreement and Warranty information. To find the latest Quick-Start Guide, go to <http://www.wyse.com/manuals> and click on the name of your zero client.

✔ **Important:** A printed copy of the Wyse Technology End User License Agreement is included in the shipping box and provided for your reference only. The license at <http://www.wyse.com/license> as of the purchase date is the controlling licensing agreement. By copying, using, or installing the software or the product, you agree to be bound by those terms.

✔ **Important:** If you use Wyse Device Manager Server software for managing your Wyse zero clients, download the latest version to ensure compatibility at <http://support.wyse.com/selfservice.html>.

⚠ **Caution:** Improper connection, mounting, or use of this product could result in component failure or undesired interference. Read Caution Statements before setting up and operating the zero client.

### Initial Environment Setup

The Wyse P25 zero client is for use with PC-over-IP® (PCoIP®) protocol environments. The zero client connects to a host server which is PCoIP capable.

Before setting up and using the zero client, you must have a properly installed PCoIP environment that it can access. This guide will help you to set up the zero client and establish a remote connection to your host server using PCoIP technology, enabling you to use applications and desktop peripherals as if you were using them locally.

**Note:** PCoIP technology is designed to deliver a user desktop from a centralized host server across standard IP networks – including full DVI dual monitor video, complete USB 2.0 compatibility, and full-duplex high-definition audio.

### Setting Up Your Zero Client

Before setting up and operating the zero client, read all **Caution Statements**. Refer to the figures and proceed as follows:

1. Place the zero client on a desk; make sure the monitor and the zero client are turned off and disconnected from AC power.
2. Make all desired connections. The monitor, keyboard with mouse, and Ethernet network are required. Additional connections of peripheral devices may be made at this time.
3. Connect the power adapter to the zero client power input before connecting to a 100-240V AC, 50-60 Hz electrical outlet.
4. Press zero client *Multifunction power button* to apply power. The power button will light blue; wait for the monitor to display the On Screen Display (OSD).

LED indicators\* include:

Status LED Bi-color light for *connected /not connected* (green/amber)

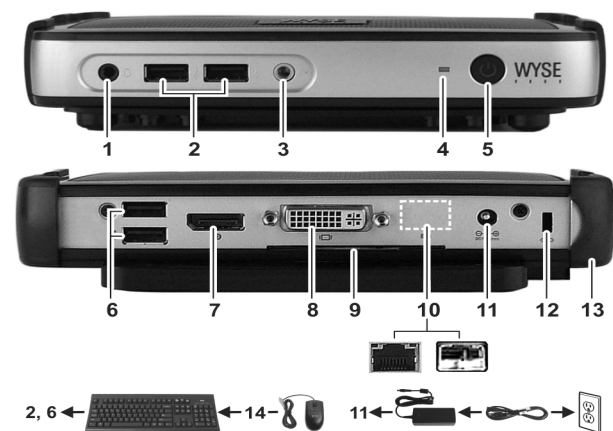
Power LED Single light for power *on/off* (blue)

\* For detailed LED indicators information, go to the Wyse Knowledge Base at <http://www.wyse.com/kb> and search for solution 22671.

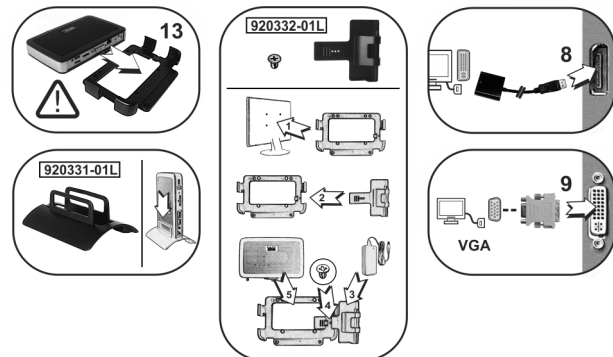
**Note:** If the monitor does not show the OSD, check all connectors and make sure the monitor and zero client are turned on.

**Note:** For more information refer to the user and administrators guides, or contact your Wyse sales representative.

### Features



Components may vary based on model and location.



- |  |  |
|--|--|
| 1 Combination audio/microphone jack <sup>1</sup> | 8 DVI-I port   |
| 2 USB 2.0 port (2) <sup>2</sup>                  | 9 Product information tab                                  |
| 3 Line out/Speaker out <sup>1</sup>              | 10 Network port, 10/100/1000Base-T (or) SFP/Mini-GBIC slot |
| 4 Status LED                                     | 11 +12VDC Power adapter input                              |
| 5 Multifunction power button/LED                 | 12 Kensington lock slot                                    |
| 6 USB 2.0 port (2) <sup>2</sup>                  | 13 Horizontal stand/VESA mount                             |
| 7 DisplayPort connector                          | 14 PS/2 mouse port located on keyboard                     |

<sup>1</sup> **Warning:** Adjustment of the volume control or the equalizer beyond the center position may increase the earphones/headphones output voltage and sound pressure level.

<sup>2</sup> Not all USB devices are supported; check with Wyse or your Wyse representative to find out if a particular device is supported on your zero client.

## Additional Notes

**Monitor Types:** In addition to DVI and DisplayPort monitors, the zero client is compatible with analog VGA and digital HDMI monitors. See <http://www.wyse.com/products/accessories> for information about approved adapters for connecting VGA and HDMI monitors to the zero client. **Note:** Audio for HDMI is not supported.

**IP Address:** The zero client is set to *DHCP client* mode by default. Normally, the IP address of the zero client and host server are assigned by the DHCP server on your IP network. If your IP network does not have a DHCP server, the zero client and host server will fall back to a static IP address mode after a time-out period of approximately 2 minutes. In the fall back static IP address mode, you can access the zero client to disable *DHCP client* mode and assign a static IP address. The zero client fall back IP address is **192.168.1.101**.

### Multifunction Power Button/LED:

- Press the button and light turns on: Turns on the zero client.
- Press and hold the button until light turns off: Turns off the zero client.
- Press the button when zero client is connected in a session: Disconnects zero client from the host server.

## Configure

The zero client can be configured to use DHCP or Static IP addressing. To change the settings, in the *On Screen Display* go to **Options > Configuration > Network** tab. You may need to unlock the settings page with a password (default password is **Administrator**).

## Establishing a PCoIP Connection

1. Turn on the zero client. Wait until the *Connect* command button on the zero client user screen is active for use (no longer grayed out=active).
2. Using the mouse connected to the zero client, click **Connect**. The message "*Discovering hosts, please wait ...*" will appear. After host discovery is complete, a list of available hosts on the network will appear.

**Note:** If the *Connect* command button on the zero client user screen is inactive (grayed out=inactive) or if the zero client cannot discover host servers on the network, check the network connection and make sure the Ethernet switch or router is turned on.

3. Select the host to which you want to connect and click **OK**. After a successful PCoIP connection, the Status LED of the zero client will light green. You are now connected.

## Caution Statements

Improper connection, mounting, or use of this product could result in component failure or undesired interference. Read the following caution statements before setting up and operating your device.

### Setup

- Do not connect to AC power until all other connections (including the power adapter) are made. Connecting or disconnecting components or equipment on the back panel when the device is receiving AC power can cause power surges and damage the device.
- Do not force a connector into its socket. If any undue resistance is encountered, ensure that the connector is correctly oriented to the receptacle.

## Venting and Care

- Mount the device only as shown or in accordance with the instructions provided with Wyse-approved mounting accessory kits. Improper orientation could restrict the airflow of heat from the device and damage it.
- Allow sufficient space around the device for ventilation; do not place the device in any enclosure that restricts airflow around the device; do not place any objects on the device or block the vent outlets. For environmental operating specifications, locate your product and download the Fact Sheet using the Cloud clients tab at: <http://www.wyse.com/products>

## Power Sources

- For regulatory compliance use only the power adapter that comes with your device or a Wyse-approved equivalent. Refer to the regulatory notices in the device's documentation.  
**⚠ Warning:** Use of any other power adapter may damage your device or the power adapter. The damage caused by an improper power adapter is not covered by warranty.
- When turning off the device, make sure to perform a complete shutdown (via the power button). Do not disconnect the AC power cord, DC power cord, or shut off power at a circuit breaker (including power strips), etc., to turn off the device.
- Surge protectors for electrical devices are recommended in areas of lightning. However, when lightning is occurring, your equipment should be properly shut down and unplugged from AC power until the storm has passed.

## Need more information?

**Wyse Reference Guides** - User, Administrator, and related documentation is available at:

<http://www.wyse.com/manuals>

**Wyse Service and Support** - Upgrade software images for installation are available at:

<http://www.wyse.com/support>

**Wyse Device Manager** - Information about Wyse remote management software is available at:

<http://www.wyse.com/products/software/management/WDM>

**Wyse and the Environment** - Information about Wyse compliance with RoHS and with the Waste Electrical and Electronic Equipment (WEEE) is available at:

<http://www.wyse.com/green>

**Wyse and E-Recycling** - Information about recycling unwanted Wyse product within the United States is available at:

<http://www.wyse.com/erecycling>

**Wyse Warranty Registration** - Register your product at:

<http://www.wyse.com/registration>

\*The standard warranty is three years from the date of purchase.

