

11415 JOOLA Atlanta Assembly Addendum

Thank you for purchasing the JOOLA Atlanta tennis table from KETTLER. This addendum is to be used as an assembly guide in conjunction with the assembly manual provided with the table. Two adults are required for assembly of this table. Should you have any questions or concerns please contact us.

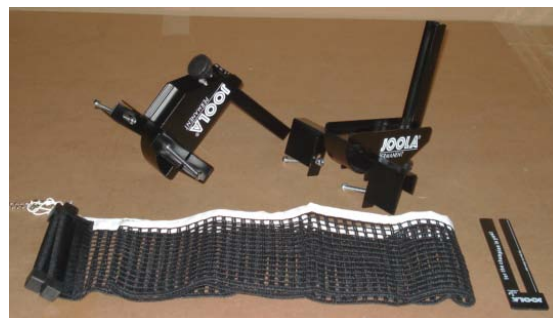
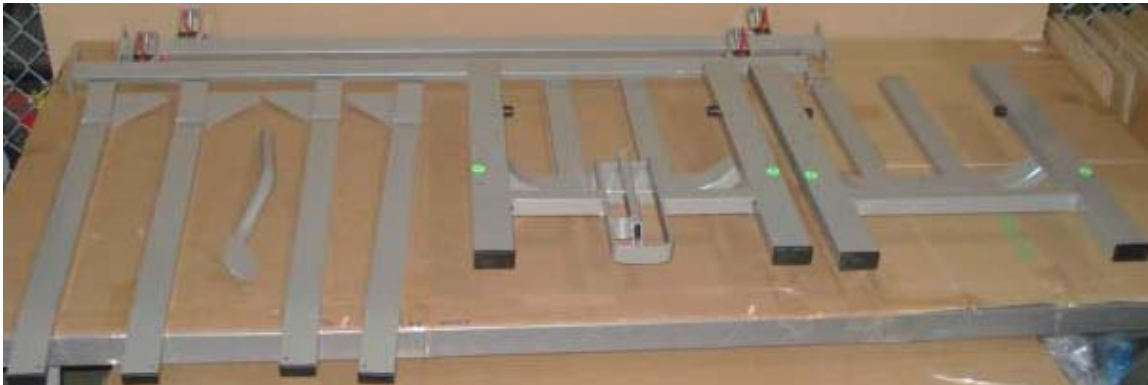
Tools Required (not included):

10mm wrench (2x)
13mm wrench (2x)
Phillips Head Screwdriver

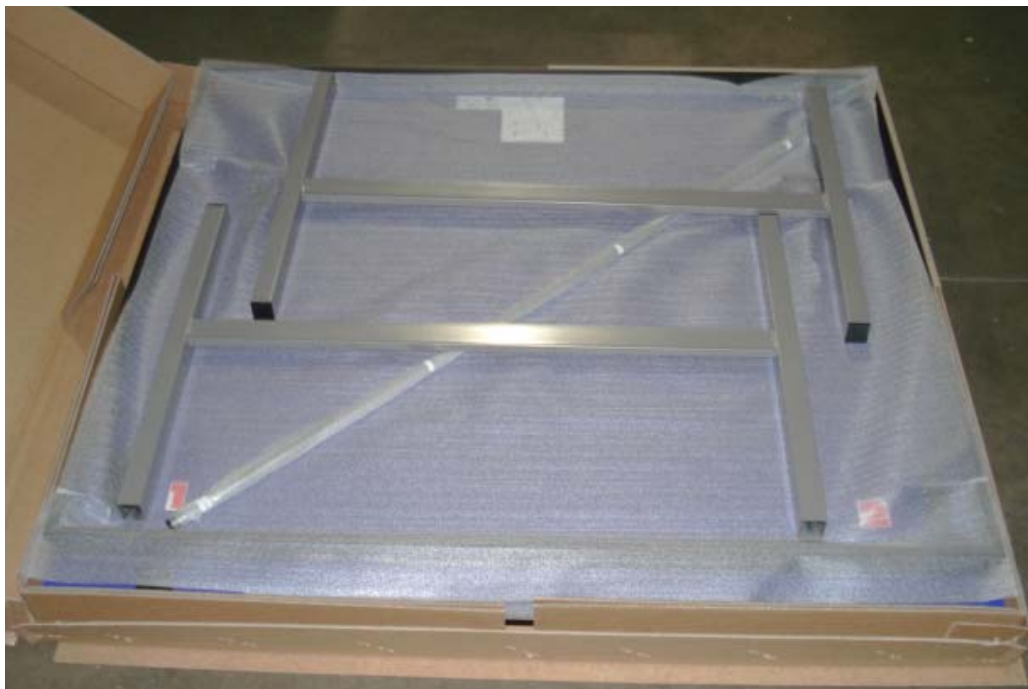
Begin the assembly of your table by carefully removing the contents from the packaging. Separate the parts (including the hardware) and compare quantities with the checklist shown in manual.



Contents of wheelbase box:



Contents of top box:



Step 1: Attach foot lock and side frames to wheelbase.

Hardware Needed:



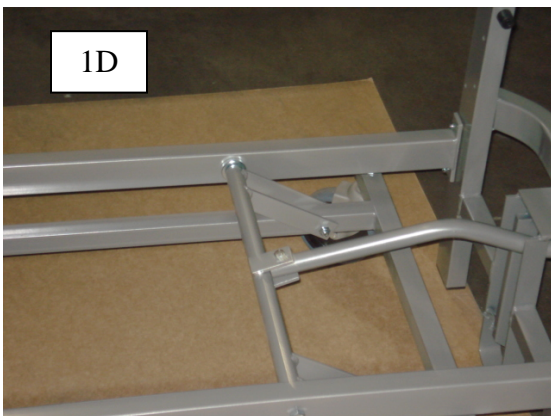
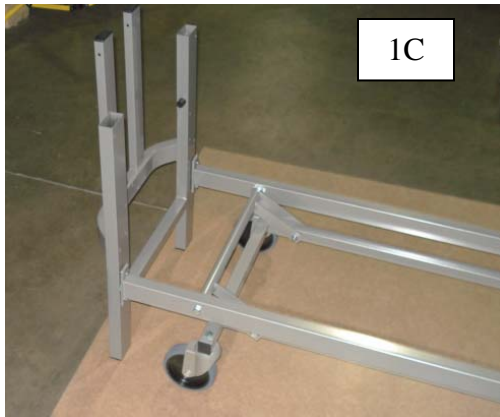
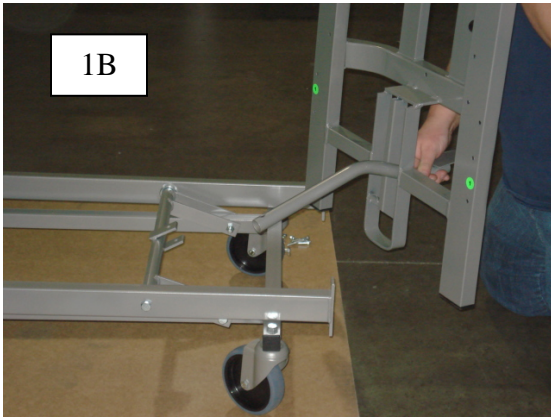
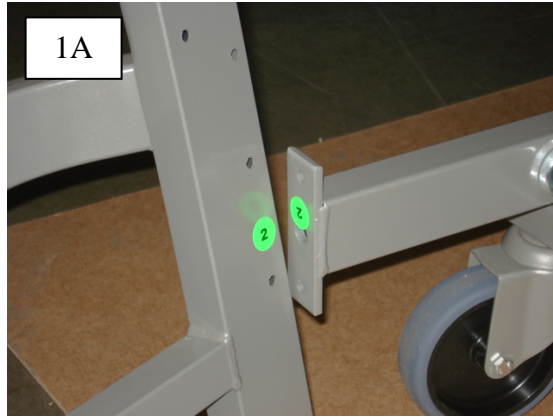
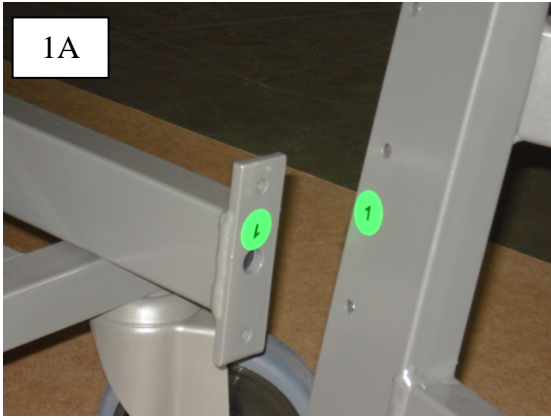
M6X40 Hex Bolts (8x)
M6 Hex Lock Nuts (8x)
M8X45 Hex Bolts (1x)
M8 Hex Lock Nuts (1x)

1A: Line up side frames #1 and #2 with the wheelbase sides #1 and #2; the side frames and the wheelbase will be labeled.

1B: Insert foot lock through side frame #1.

1C: Bolt the side frames to the wheelbase using the M6X40 hex bolts and hex lock nuts.

1D. Bolt the foot lock to wheelbase using the M8x45 hex bolt and hex lock nut.



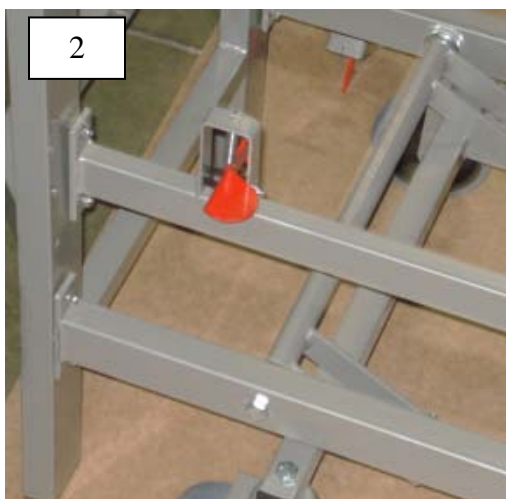
Step 2: Attach square crossbars to side frames

Hardware Needed:



M6X40 Hex Bolts (8x)
M6 Hex Lock Nuts (8x)

Bolt the square crossbars to the side frames; ensure that the red release levers are assembled in the position shown.



Step 3: Ensure that the wheels are locked before continuing

Step 4: Attach round crossbar to side frames

Hardware Needed:



M6X50 Hex Bolt (2x)
6.4x12mm Black Resin Washers (2x)

Slide washer onto bolt and then thread the bolt through side frame and into the round crossbar.



Step 5: Prepare tops for assembly to wheelbase

Hardware Needed:



M6X40 Hex Bolts (8x)
M6X10 Hex Bolts (8x)
M6 Hex Lock Nuts (16x)
4x15mm Screws (8x)
Metal Flange (8x)
Safety Latch (2x)

5A: Carefully lay one top, with the playing surface face down, on a level surface. Please protect your table top from being damaged.



5B: Assemble safety latch to the top using 4 of the 4x15mm screws. The safety latch should be pointing down (facing away from #2) as shown.



5C: Using the M6x10mm hex bolts and nuts, assemble one metal flange to each of the black metal brackets pre-assembled to the table top.



5D: Using the M6X40 hex bolts and nuts, assemble one metal flange to the black profile strip on each side of table.



5E: Ensure that all the bolts and nuts are tightened properly. Repeat this assembly for the other table top.



Step 6: Mount one top to wheelbase

Hardware Needed:

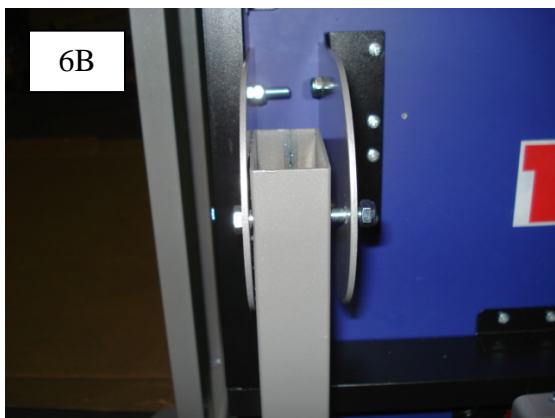


M6X50 Hex Bolt (2x)
M6 Hex Lock Nuts (2x)

6A: With the help of two people, lift one top onto the wheelbase.



6B: Bolt the metal flanges to the upright post of each side frame.



6C: Tighten the bolts and nuts properly.

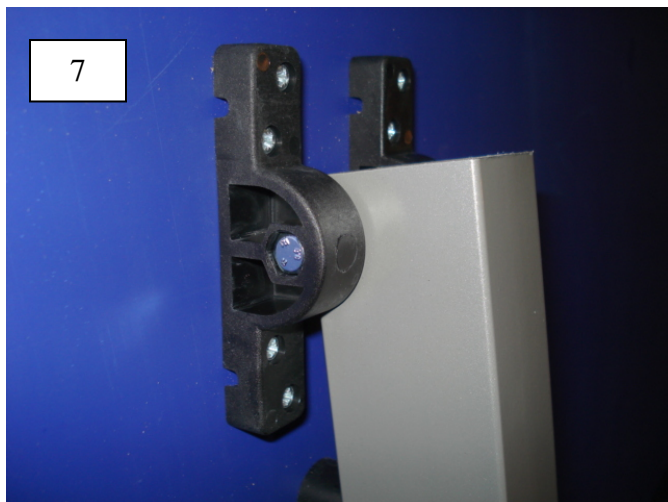
Step 7: Assemble legs to table top

Hardware Needed:



M6X90 Hex Bolt (2x)
M6 Hex Lock Nut (2x)

Assemble the legs to resin clamps pre-assembled to the table tops. The head of bolt fits into the mold of clamp.



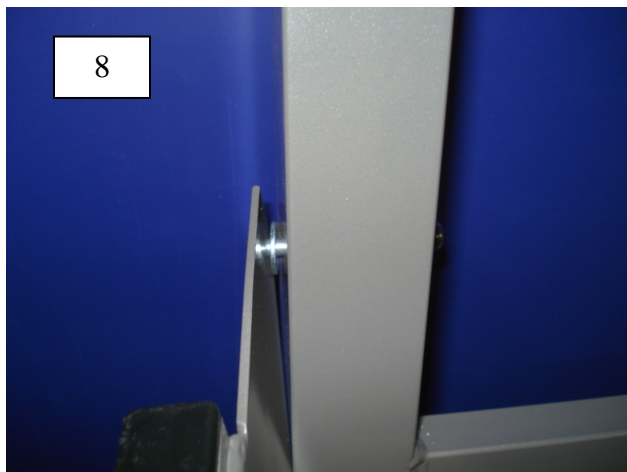
Step 8: Attach support bars to legs

Hardware Needed:



M6x60 Hex Bolts (2x)
6.4X16mm Washers (2x)
M6 Hex Lock Nuts (2x)

Insert bolt through support bar, slide washer onto bolt, insert bolt through leg, and thread nut onto bolt; leave loose until step 9 is complete.





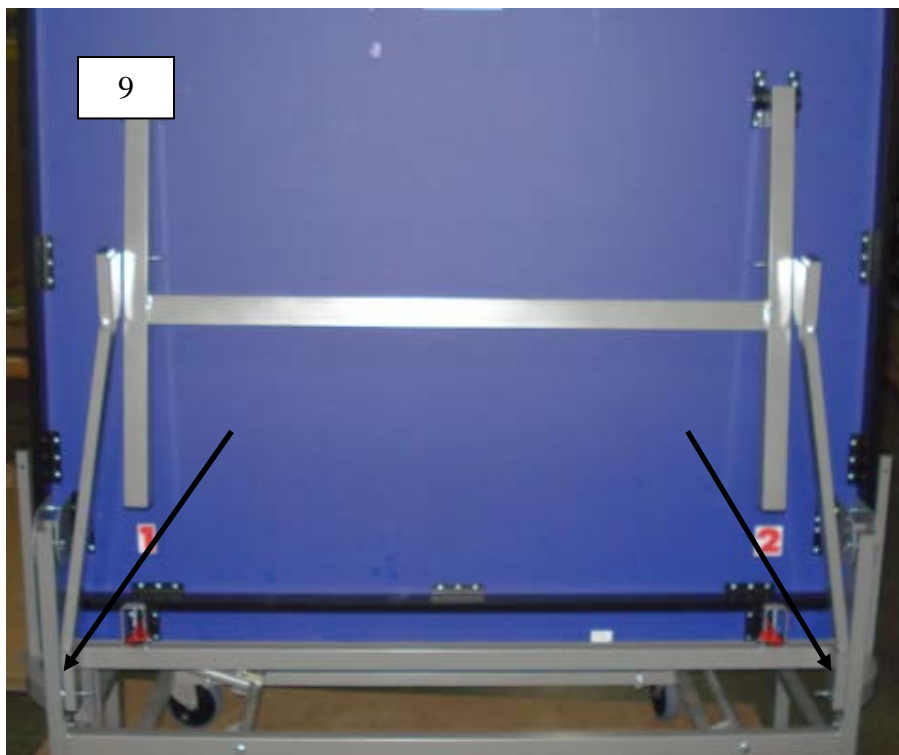
Step 9: Assemble support bars to upright post on each side frame

Hardware Needed:



M6X60 Hex Bolt (2x)
 M6 Hex Nut (2x)
 15x6.3x7 Resin Black Spacer (2x)
 M6 Hex Lock Nut (2x)

Insert bolt through upright post on side frame, thread the hex nut onto the bolt, slide spacer onto bolt, insert bolt through the support bar, and then tighten down with the hex lock nut. If you are having trouble lining up the holes, pulling the legs away from the table will help line up the holes. Go back and tighten the nut and bolt from step 8.

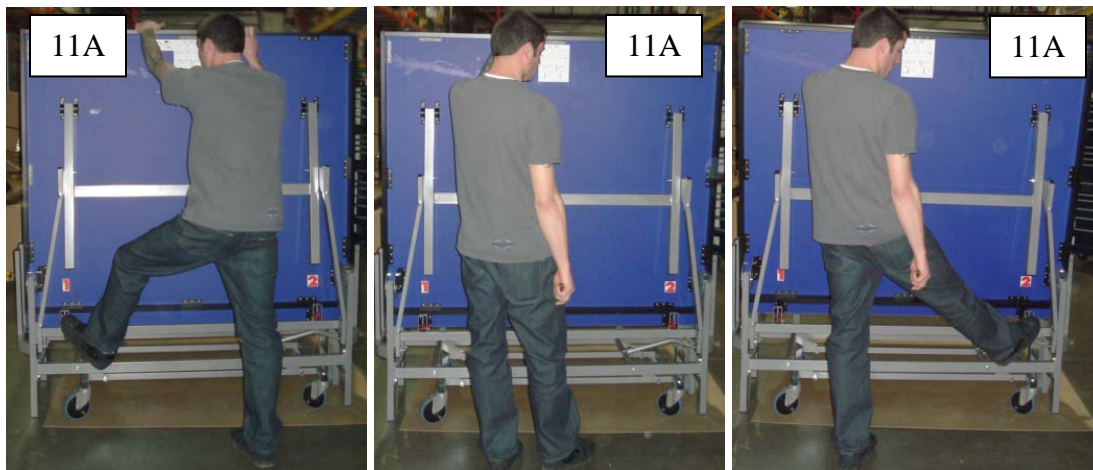


Step 10: Complete steps 6-9 for the other top.

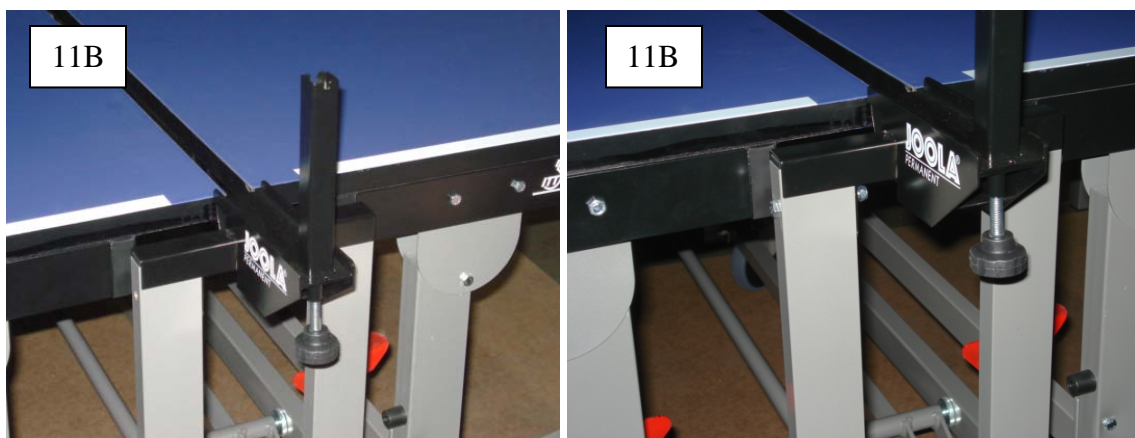
Step 11: Assemble permanent net system; the hardware needed is pre-assembled to posts.



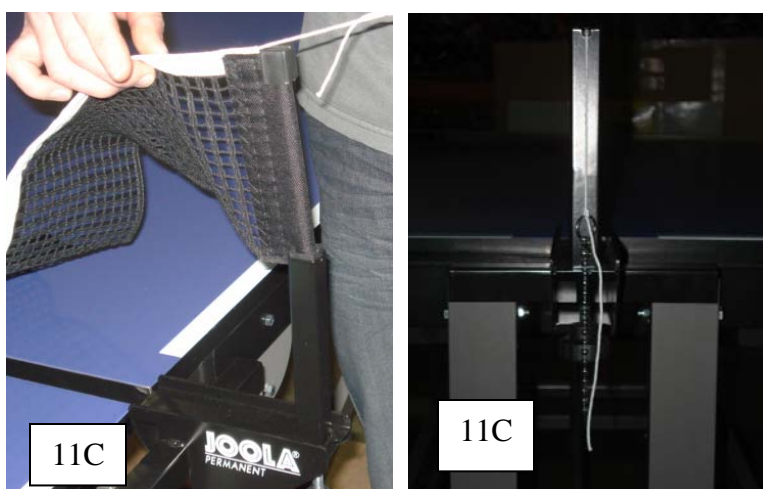
11A: Open the table into the playing position. Ensure that the table is locked before opening the table. To properly open the table press the red release lever #1 with your foot, pull the table top down slightly, while holding the top press red release lever #2 and carefully lower the table top into the playing position.



11B: Remove the M6x60 Hex Bolts and M6 Hex Lock Nuts from net post, and place the net post to the side frame. Tighten the nut and bolt down properly.



11C: Insert net into the post. Set tension on net by attaching chain into notch on post. Use adjustment knob to set the height of your net.



©2010 KETTLER®. All rights reserved. No part of this manual may be reproduced, stored in a retrieval system, or transmitted in any form, or by any means, such as electronic, mechanical, photocopying or otherwise, without the prior written permission of KETTLER®.