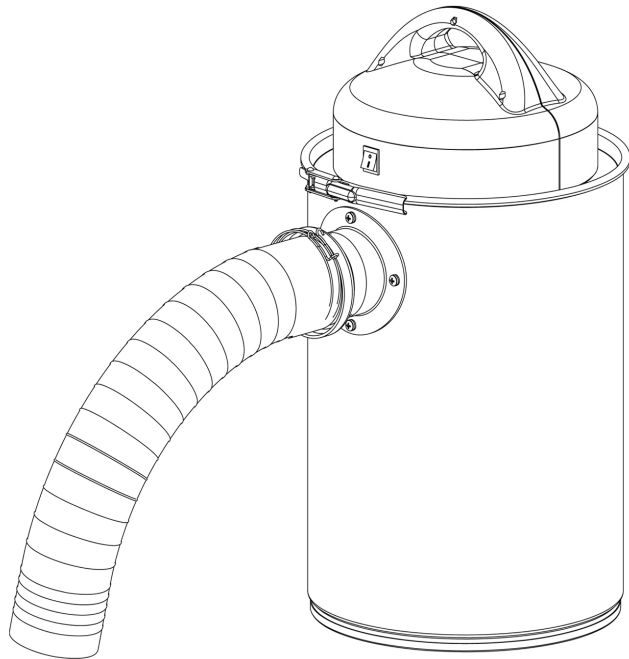




## **OPERATOR'S MANUAL**



## **Dust Extractor with Wall Mount Model #3400**

### **IMPORTANT:**

Your new tool has been engineered and manufactured to WEN's highest standards for dependability, ease of operation, and operator safety. When properly cared for, this product will supply you years of rugged, trouble-free performance.

Pay close attention to the rules for safe operation, warnings, and cautions. If you use your tool properly and for its intended purpose, you will enjoy years of safe, reliable service.



### **Need help? Contact us!**

**Have product questions? Need technical support?**  
**Please feel free to contact us at:**



**800-232-1195** (M-F 8AM-5PM CST)



**techsupport@wenproducts.com**



**WENPRODUCTS.COM**

## **Description**

The WEN<sup>®</sup> Dust Extractor is a powerful yet compact dust collection system. The dust extractor is portable with a 4" diameter collection hose and an adapter set that allows connection to several other dust exhaust port sizes. Includes a filter cartridge and five filter bags with an efficiency rating of 0.5 microns.

The WEN<sup>®</sup> Dust Extractor additionally includes mounting hardware so that the unit may be conveniently stored on a wall, increasing floor space in the workshop. Also included is a caster set for increased portability.

## **Specifications**

Motor:	3/4 HP, 20,000 RPM
Voltage:	120 V
Amps:	9.2
Hertz:	60
Air Flow Rate:	108 CFM
Sound Level:	85 dBA
Hose:	4" dia. x 7'
Adapter Sizes:	34, 40, 45 and 68 mm
Capacity:	13.2 gallons
Weight:	27 lbs.
Overall Size:	15.75" dia. x 27.56"

## General Safety Information

**Warning:** For your own safety, read all of the instructions and precautions before operating tool.

**Caution:** Always follow proper operating procedures as defined in this manual — even if you are familiar with use of this or similar tools. Remember that being careless for even a fraction of a second can result in severe personal injury.

**PROPOSITION 65 WARNING:** Some dust created by using power tools contains chemicals known to the state of California to cause cancer, birth defects, or other reproductive harm.

Some examples of these chemicals are:

- Lead from lead-based paints.
- Crystalline silica from bricks and cement and other masonry products.
- Arsenic and chromium from chemically treated lumber.

Your risk from these exposures vary, depending on how often you do this type of work. To reduce your exposure to these chemicals: work in a well-ventilated area with approved safety equipment. Always wear **OSHA/NIOSH** approved, properly fitting facemasks or respirators when using such tools.

### Be Prepared for Job

1. Wear proper apparel. Do not wear loose clothing, gloves, neckties, rings, bracelets or other jewelry that may get caught in moving parts of machine.
2. Wear protective hair covering to contain long hair.
3. Wear safety shoes with non-slip soles.
4. Wear safety glasses complying with United States ANSI Z87.1. Everyday glasses have only impact resistant lenses. They are **NOT** safety glasses.
5. Wear facemask or dust mask if cutting operation is dusty.
6. Be alert and think clearly. Never operate power tools when tired, intoxicated or when taking medications that cause drowsiness.

### Prepared Work Area for Job

1. Keep work area clean. Cluttered work areas and workbenches invite accidents.
2. Do not use power tools in dangerous environments. Do not use power tools in damp or wet locations. Do not expose power tools to rain.
3. Work area should be properly lit.
4. A proper electrical outlet should be available for the tool. Three-prong plugs should be plugged directly into properly grounded, three-prong receptacles.
5. Extension cords should have a grounding prong and the three wires of the extension cord should be at the correct gauge.
6. Keep visitors at a safe distance from work area.
7. Keep children out of workplace and childproof the workshop. Use padlocks, master switches, and switch key removal to prevent any unintentional use of power tools.

### **Tool Should Be Maintained**

1. Always unplug tool prior to inspection.
2. Consult manual for specific maintenance and adjustment procedures.
3. Keep tool lubricated and clean for safest operation.
4. Remove adjusting tools. Form habits of checking to see that adjusting tools are removed before switching the machine on.
5. Keep all parts in working order. Check to determine that the guard or other parts will operate properly and perform their intended function.
6. Check for damaged parts. Check for binding, breakage, mounting, misalignment of moving parts, or any other condition that may affect a tool's operation.
7. A guard or other damaged part should be properly repaired or replaced. Do not perform makeshift repairs (use the parts list provided to order repair parts).

### **Know How to Use Tool**

1. Use the tool for right job. Do not force a tool or attachment to do a job for which it was not designed.
2. Disconnect the tool when removing filter or collector bags.
3. Avoid accidental startups. Make sure that tool switch is in the off position before plugging in.
4. Do not force the tool. It will work most efficiently at the rate for which it was designed.
5. Leave hands free to operate machine. Protect hands from possible injury.
6. Never leave a tool running unattended. Turn the power off and do not leave until the tool comes to a complete stop.
7. Do not overreach. Keep proper footing and balance.
8. Never stand on the tool. Serious injury could occur if the tool tips over.
9. Keep hands away from moving parts.
10. Know your tool. Understand the tool's operation, application, and limitations.

## **ELECTRICAL INFORMATION**

### **Grounding instructions**

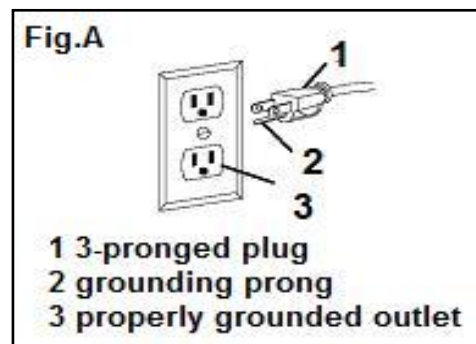
IN THE EVENT OF A MALFUNCTION OR BREAKDOWN, grounding provides the path of least resistance for electric current and reduces the risk of electric shock. This tool is equipped with an electric cord that has an equipment grounding conductor and a grounding plug. The plug **MUST** be plugged into a matching outlet that is properly installed and grounded in accordance with ALL local codes and ordinances.

**DO NOT MODIFY THE PLUG PROVIDED.** If it will not fit the outlet, have the proper outlet installed by a licensed electrician.

**IMPROPER CONNECTION** of the equipment grounding conductor can result in electric shock. The conductor with the green insulation (with or without yellow stripes) is the equipment grounding conductor. If repair or replacement of the electric cord or plug is necessary, **DO NOT** connect the equipment grounding conductor to a live terminal.

CHECK with a licensed electrician or service personnel if you do not completely understand the grounding instructions or whether the tool is properly grounded.

USE ONLY THREE-WIRE EXTENSION CORDS that have three-pronged plugs and outlets that accept the tool's plug as shown in Fig. A. Repair or replace a damaged or worn cord immediately.



**CAUTION:** In all cases, make certain the outlet in question is properly grounded. If you are not sure, have a licensed electrician check the outlet.



**WARNING:** This tool is for indoor use only. Do not expose to rain or use in damp locations.

### Guidelines for using extension cords

Make sure your extension cord is in good condition. When using an extension cord, be sure to use one heavy enough to carry the current your product will draw. An undersized cord will cause a drop in line voltage resulting in loss of power and overheating. The table below shows the correct size to be used according to cord length and nameplate ampere rating. When in doubt, use the next heavier gauge. The smaller the gauge number, the heavier the cord.

#### Minimum Gauge for Extension Cords (AWG)

(When using 120 V only)

Ampere Rating	Total Length of Cord in feet			
	25'	50'	100'	150'
0 – 6 Amps	18 gauge	16 gauge	16 gauge	14 gauge
6 – 10 Amps	18 gauge	16 gauge	14 gauge	12 gauge
10 – 12 Amps	16 gauge	16 gauge	14 gauge	12 gauge
12 – 16 Amps	14 gauge	12 gauge	Not Recommended	

Make sure your extension cord is properly wired and in good condition. Always replace a damaged extension cord or have it repaired by a qualified person before using it.

Protect your extension cords from sharp objects, excessive heat and damp/wet areas.

Use a separate electrical circuit for your tools. This circuit must not be less than a #12 wire and should be protected with a 15 A time-delayed fuse. Before connecting the motor to the power line, make sure the switch is in the OFF position and the electric current is rated the same as the current stamped on the motor nameplate. Running at a lower voltage will damage the motor.



**WARNING:** This tool must be grounded while in use to protect the operator from electric shock.

## Assembly

Refer to Exploded View, Page 9.

### Install Casters

1. Thread M10 hex nut and flat washer (Item 29 and 33) onto the threaded stud of one of the casters (Item 31 and 32).
2. Insert threaded stud of caster into hole on the outside bottom of the tank (Item 28) and secure in position with M10 flat washer, lock washer and hex nut (Item 29, 30 and 33) inside tank.
3. Repeat the above steps for the remaining three casters.

### Mount Filter Cartridge with Filter Bag

1. Place filter cartridge (Item 14) inside filter bag (Item 24). Fold any bag overhang inside the filter cartridge.
2. Slide filter cartridge with bag onto motor (Item 9) until snug on motor housing.

### Attach Hose

1. Attach hose (Item 20) to flange (Item 17) using one hose clamp (Item 19).
2. Attach hose coupling (Item 21) to other end of hose using the remaining hose clamp.

### Mount Wall Bracket

1. Using a #10 drill bit, drill four holes as shown in Figure 1. Make sure to drill holes in a solid wood stud. We recommend the bottom edge of the bracket should be at least 45" above the floor.
2. Secure bracket (Item 39) in position using the four mounting bolts (Item 38). Note the orientation of the supporting bolt holes of the bracket as shown in Figure 1.
3. To store extractor, lift and insert support bolts (Item 37) into bolt holes of bracket.

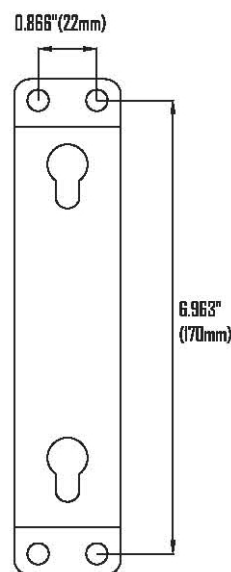


Figure 1 - Wall Bracket

## Operation

Refer to Exploded View, page 9.

1. Position dust extractor on a flat level surface near the dust-producing machine.
2. Connect inlet hose (Item 20) to dust producing machine using hose coupling (Item 21). Use adaptors (Item 27) if needed.
3. Turn dust collector on before starting dust-producing machine.

## Emptying Extractor Tank

***Turn switch off and remove plug from power source outlet before emptying collector bag.***

Refer to Exploded View, page 9.

1. Pull out handle of locking strap (Item 13) to release and remove locking strap.
2. Remove upper section of extractor by lifting off top cover (Item 18).
3. Empty chips and dust inside tank into a suitable receptacle. Dispose of properly.
4. Replace the upper section on top of the tank. Secure in position with locking strap.

## Changing Filter Bag and/or Cartridge

1. Pull out handle of locking strap (Item 13) to release and remove locking strap.
2. Remove upper section of extractor by lifting off top cover (Item 18).
3. Slide filter cartridge with bag (Item 14 and 24) off motor.
4. Remove bag from cartridge. Place new bag over cartridge, folding the bag excess inside the cartridge.
5. Slide cartridge with new bag onto motor until snug.

## Maintenance

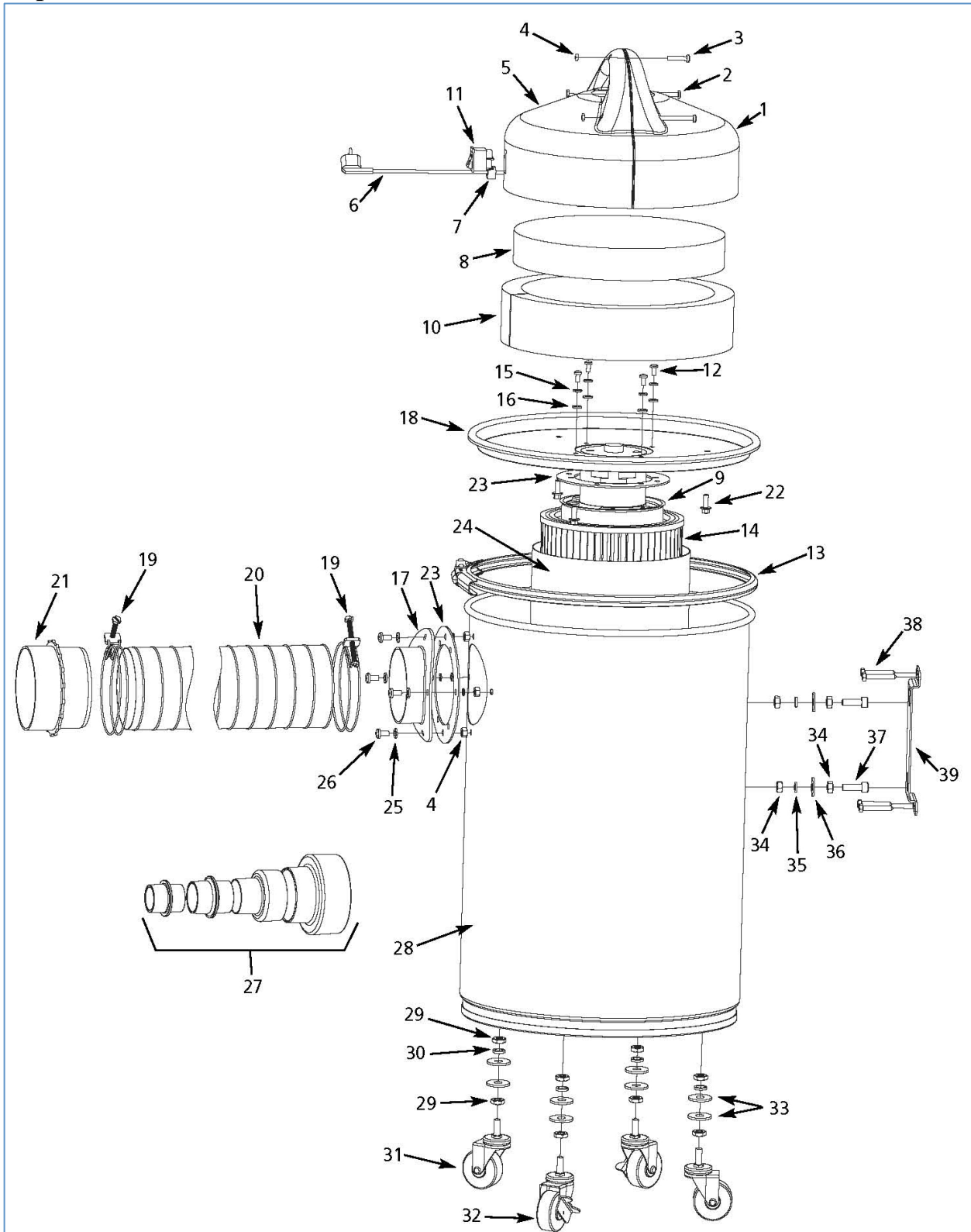
***Turn switch off and remove plug from power source outlet before maintaining your dust extractor.***

1. Clean dust, chips and other particles from motor. If operation is excessively dusty or dirty, frequent inspection of motor is required. Vacuum any particles that may have entered the motor.
2. Replace worn, cut or damaged line cord.
3. Replace worn or damaged collector hose.
4. Replace worn or damaged cartridge and bags.
5. Clean the casters as needed to ensure proper operation.
6. Frequently check that all nuts, bolts, screws, etc. have not loosened due to vibration.

## Troubleshooting Chart

Symptom	Possible Cause(s)	Corrective Action
Motor will not run.	Defective plug, cord, switch or motor	Check wiring, replace defective parts
	Blown fuse or circuit breaker	Check fuse or breaker, replace
Excessive dust in air.	Leaking bag or hose connection	Check filter bag connection. Check collector hose connections
		Replace filter bag
Motor is excessively noisy, growls or pitch has changed.	Worn brushes	Inspect brushes, place if necessary
	Defective motor	Have motor checked by qualified motor service technician
Motor fails to develop full power or motor stalls.	Low voltage to collector caused by circuit overload	Remove other electric machines or appliances from circuit
	Low voltage to collector caused by undersized extension cords	Increase wire gauge size of extension cords or shorten extension cords
	Low voltage from power source	Request voltage check from power company
Motor slow starts or fails to reach full speed.	Burned or defective motor	Check motor, replace if necessary
	Worn brushes	Inspect brushes, replace if necessary
Motor overheats.	Motor overload	Reduce load by slowing dust production
	Improper motor cooling	Clean sawdust from motor
Tripping circuit breaker or fuses.	Motor overloaded	Reduce load by slowing dust production
	Improper capacity of circuit breaker or fuses	Use proper capacity circuit breaker or fuse

## Exploded View



## Parts List

Item	Stock #	Description
1	3400-001	Right Cover
2	3400-002	Pan Head Screw
3	3400-003	Pan Head Screw
4	3400-004	Nut
5	3400-005	Left Cover
6	3400-006	Line Cord
7	3400-007	Strain Relief
8	3400-008	Top Foam Seal
9	3400-009	Motor
10	3400-010	Side Foam Seal
11	3400-011	Switch
12	3400-012	Pan Head Screw
13	3400-013	Locking Strap
14	3400-014	Filter cartridge
15	3400-015	Lock Washer
16	3400-016	Serrated Washer
17	3400-017	Flange
18	3400-018	Top Cover
19	3400-019	Hose Clamp
20	3400-020	Hose

Item	Stock #	Description
21	3400-021	Hose Coupling
22	3400-022	Tap Screw
23	3400-023	Gasket
24	3400-024	Filter Bag
25	3400-025	Flat Washer
26	3400-026	Pan Head Screw
27	3400-027	Hose Adapter Set
28	3400-028	Tank
29	3400-029	Nut
30	3400-030	Lock Washer
31	3400-031	Caster
32	3400-032	Locking Caster
33	3400-033	Flat Washer
34	3400-034	Nut
35	3400-035	Lock Washer
36	3400-036	Flat Washer
37	3400-037	Socket Head Bolt
38	3400-038	Mounting Screw
39	3400-039	Mounting Bracket

## Limited One Year Warranty

WEN Products is committed to build tools that are dependable for years. Our warranties are consistent with this commitment and our dedication to quality.

### LIMITED WARRANTY OF WEN CONSUMER POWER TOOLS PRODUCTS FOR HOME USE

GREAT LAKES TECHNOLOGIES, LLC ("Seller") warrants to the original purchaser only, that all WEN consumer power tools will be free from defects in material or workmanship for a period of one (1) year from date of purchase. Ninety days for all WEN products, if the tool is used for professional use.

SELLER'S SOLE OBLIGATION AND YOUR EXCLUSIVE REMEDY under this Limited Warranty and, to the extent permitted by law, any warranty or condition implied by law, shall be the repair or replacement of parts, without charge, which are defective in material or workmanship and which have not been misused, carelessly handled, or misrepaired by persons other than Seller or Authorized Service Center. To make a claim under this Limited Warranty, please contact us at 1-800-232-1195.. To acquire service, you will have to provide proof of purchase and may be asked to ship the tool back to us freight prepaid.

THIS LIMITED WARRANTY DOES NOT APPLY TO ACCESSORY ITEMS SUCH AS CIRCULAR SAW BLADES, DRILL BITS, ROUTER BITS, JIGSAW BLADES, SANDING BELTS, GRINDING WHEELS, FILTER AND OTHER RELATED ITEMS.

ANY IMPLIED WARRANTIES SHALL BE LIMITED IN DURATION TO ONE (1) YEAR FROM DATE OF PURCHASE. SOME STATES IN THE U.S., SOME CANADIAN PROVINCES DO NOT ALLOW LIMITATIONS ON HOW LONG AN IMPLIED WARRANTY LASTS, SO THE ABOVE LIMITATION MAY NOT APPLY TO YOU.

IN NO EVENT SHALL SELLER BE LIABLE FOR ANY INCIDENTAL OR CONSEQUENTIAL DAMAGES (INCLUDING BUT NOT LIMITED TO LIABILITY FOR LOSS OF PROFITS) ARISING FROM THE SALE OR USE OF THIS PRODUCT. SOME STATES IN THE U.S. AND SOME CANADIAN PROVINCES DO NOT ALLOW THE EXCLUSION OR LIMITATION OF INCIDENTAL OR CONSEQUENTIAL DAMAGES, SO THE ABOVE LIMITATION OR EXCLUSION MAY NOT APPLY TO YOU.

THIS LIMITED WARRANTY GIVES YOU SPECIFIC LEGAL RIGHTS, AND YOU MAY ALSO HAVE OTHER RIGHTS WHICH VARY FROM STATE TO STATE IN THE U.S., PROVINCE TO PROVINCE IN CANADA AND FROM COUNTRY TO COUNTRY.

THIS LIMITED WARRANTY APPLIES ONLY TO PORTABLE ELECTRIC TOOLS, BENCH POWER TOOLS, OUTDOOR POWER EQUIPMENT AND PNUMATIC TOOLS SOLD WITHIN THE UNITED STATES OF AMERICA, CANADA AND THE COMMONWEALTH OF PUERTO RICO. FOR WARRANTY COVERAGE WITHIN OTHER COUNTRIES, CONTACT THE WEN CUSTOMER SUPPORT.

