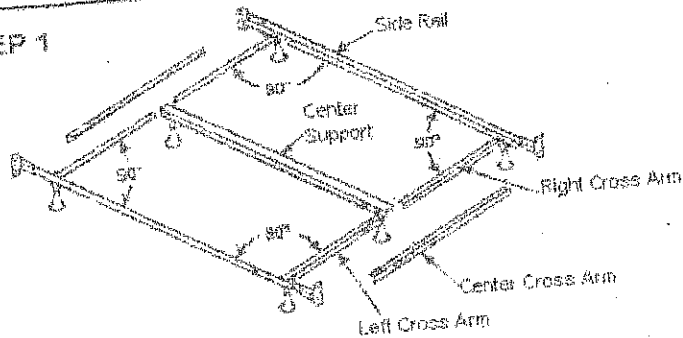


# INSTRUCTIONS FOR QUEEN, CAL. KING & KING PREMIUM BED RAILS PART NUMBER I-4456AG & I-4460AG

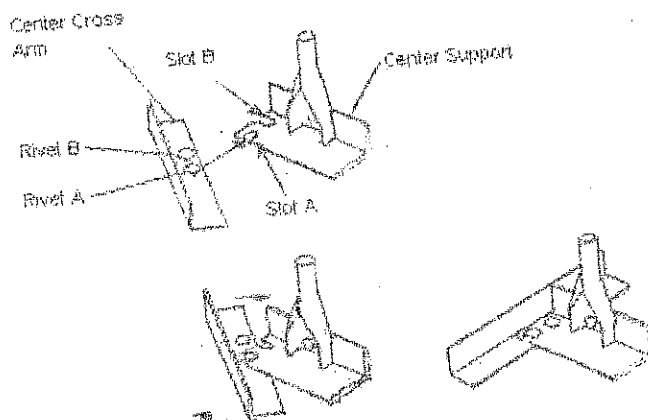
## STEP 1



1) Lay out bed rail parts as shown in STEP 1. Swing open right and left cross arms.

2) Turn the center support so that the flat angle (the top) rests on the floor and the legs are pointing up as shown in STEP 2. Also turn the center cross arms up side down so that the shoulder rivets are also pointing up. Insert the rivet A in the slot A as shown in STEP 2. Pivot the cross arm so that rivet B comes to rest into slot B. Repeat for the opposite end of the center support.

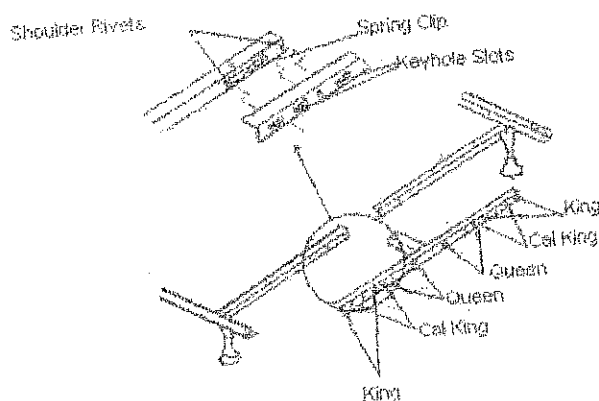
## STEP 2



3) Determine desired bedding size (Queen, Cal. King, or King). Overlap the cross arms and insert the shoulder rivets into the proper keyhole slots. Step 3 shows the size adjustments. Note that the widest keyhole slots are for king and the narrowest keyhole slots are for queen with the cal. king slots in the middle.

4) Thread glide (C) into socket (B) and insert into leg (A).

## STEP 3



## STEP 4

