

# SWISHER

**MANUFACTURING QUALITY LAWN CARE EQUIPMENT SINCE 1945**

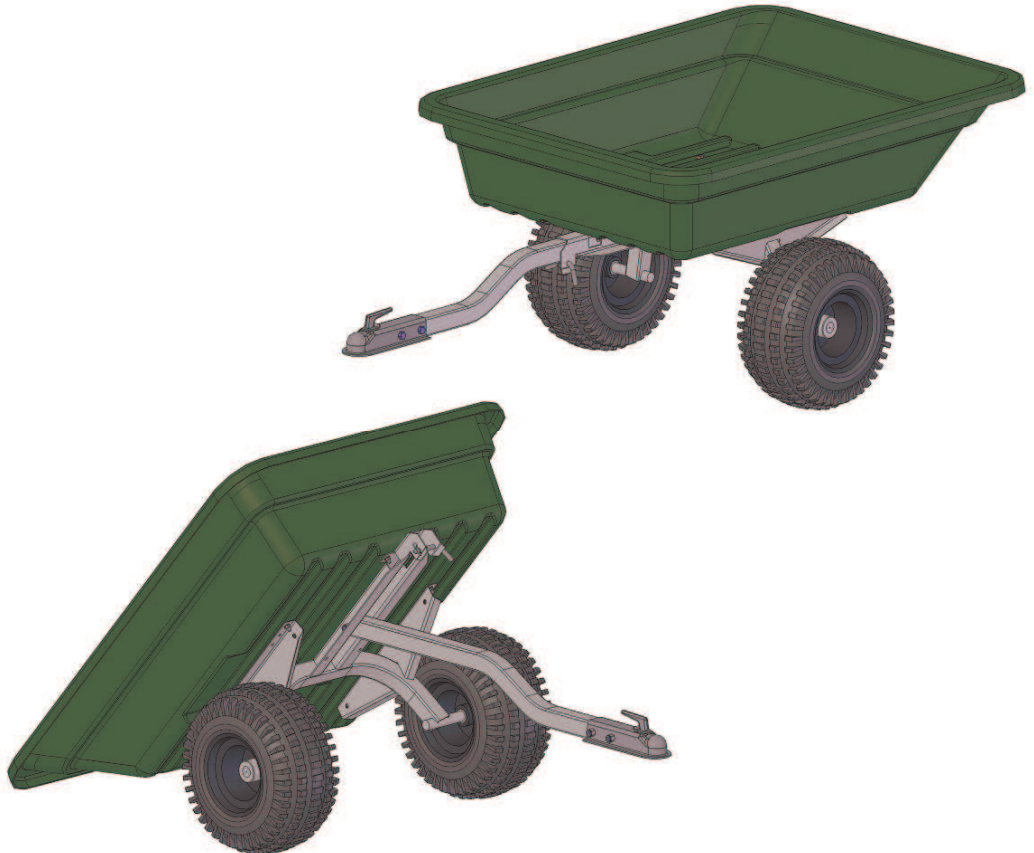
## **Owner's Manual**

### **ATV Trailer**

**12007  
750 Lbs or 16 Cu Ft  
&  
12008  
1000 Lbs or 20 Cu Ft**



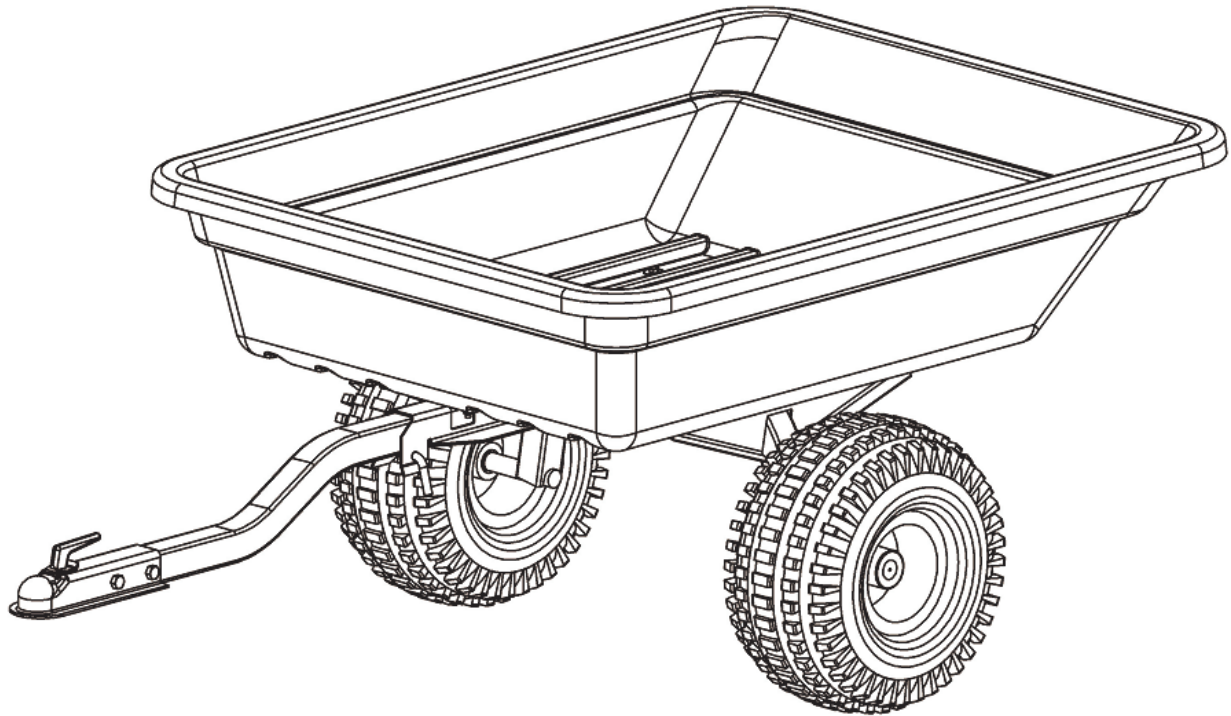
**IMPORTANT**  
**Read and follow all**  
**Safety Precautions**  
**and Instructions**  
**Before Operating this**  
**Equipment.**



## **ATV ACCESSORIES**

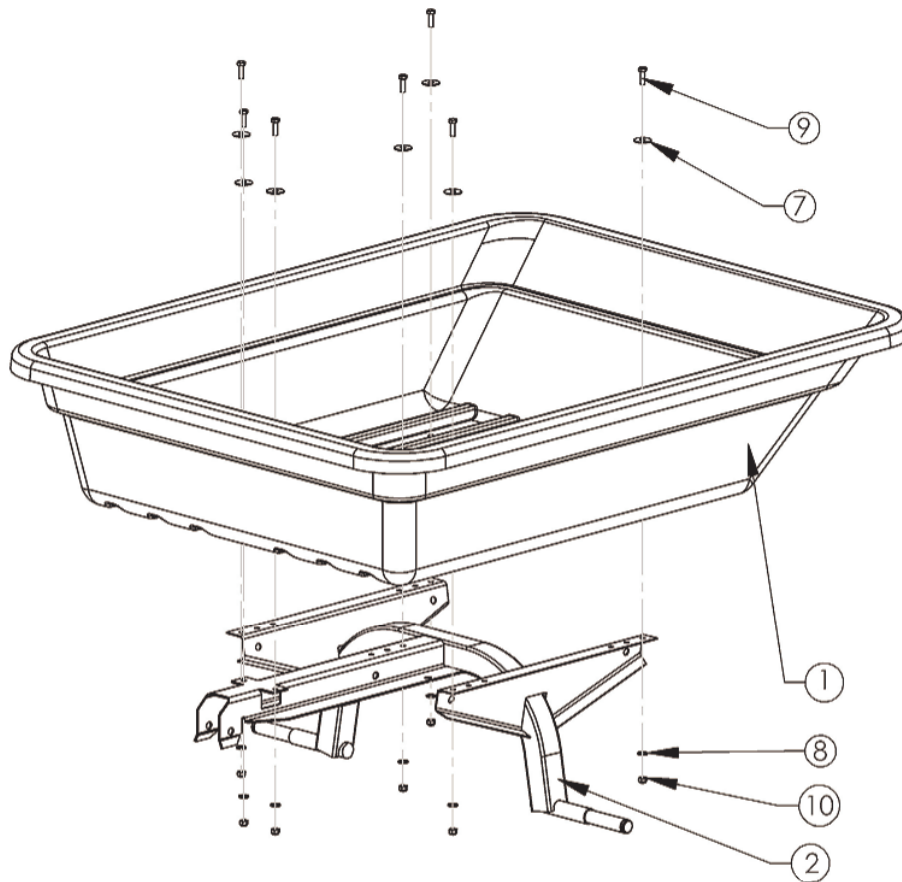
**ASSEMBLY**  
**OPERATION**  
**SERVICE AND ADJUSTMENT**  
**REPAIR PARTS**

**1602 CORPORATE DRIVE PO BOX 67 WARRENSBURG, MISSOURI 64093**  
**PH 660.747.8183 FAX 660.747.8650**  
**[swisherinc.com](http://swisherinc.com)**

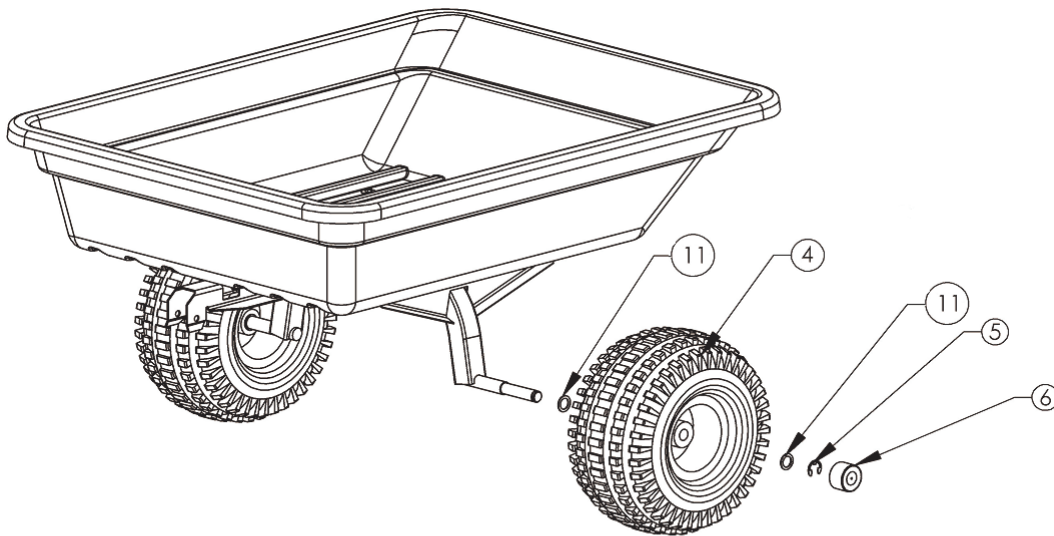


Item No.	Qty	Part No.	Description
<b>12007 16 Cu Ft Cart</b>			
1	1	10926	Tub 750 Lb Trailer 16 Cu Ft
2	1	10906TK	Axle Weldment 16 Cu Ft
3	1	10901TK	Tongue 16 Cu Ft
4	2	10394	Wheel and Tires 16 Cu Ft
<b>12008 20 Cu Ft Cart</b>			
1	1	10927	Tub 1000 Lb Trailer 20 Cu Ft
2	1	10913TK	Axle Weldment 20 Cu Ft
3	1	10903TK	Tongue 20 Cu Ft
4	2	10395	Wheel and Tires 20 Cu Ft
<b>Both Trailers</b>			
5	2	10915	E Style Retaining Ring
6	2	10916	Cap 2 1/4 in Shaft
7	7	NB579	5/61 X 1 1/4 Fender Washer
8	7	NB275	5/16 SAE Washer
9	7	NB-501	5/16-18 X 1" HCC GR 5 ZP
10	7	NB181	5/16-18 Nyloc Nut
11	4	10914	25mm X 36mm Washer
12	1	7365	2 " Ball Coupler
13	3	NB-131	1/2-13 X 3 HCC GR 5 Bolt ZP
14	3	NB281	1/2-13 Nyloc Nut
15	1	NB606	1/2 X 3 Bent Pin w/ Hair Clip

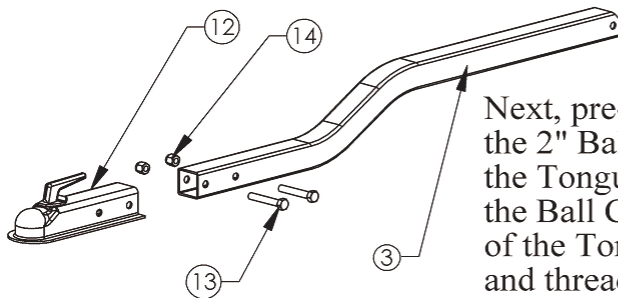
After removing your ATV Trailer from the box, carefully remove all parts from the inside of the Tub. Remove plastic retainers and discard.



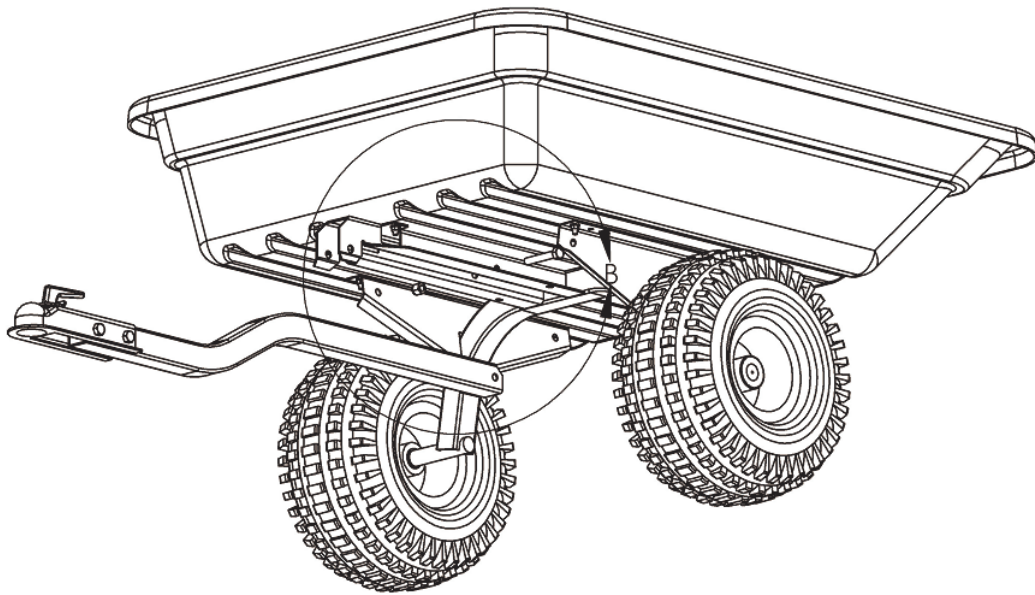
Attach the Axle Weldment (2) to the Tub (1) by installing hardware as shown. (Refer to previous page for description of hardware corresponding to numbers given.)



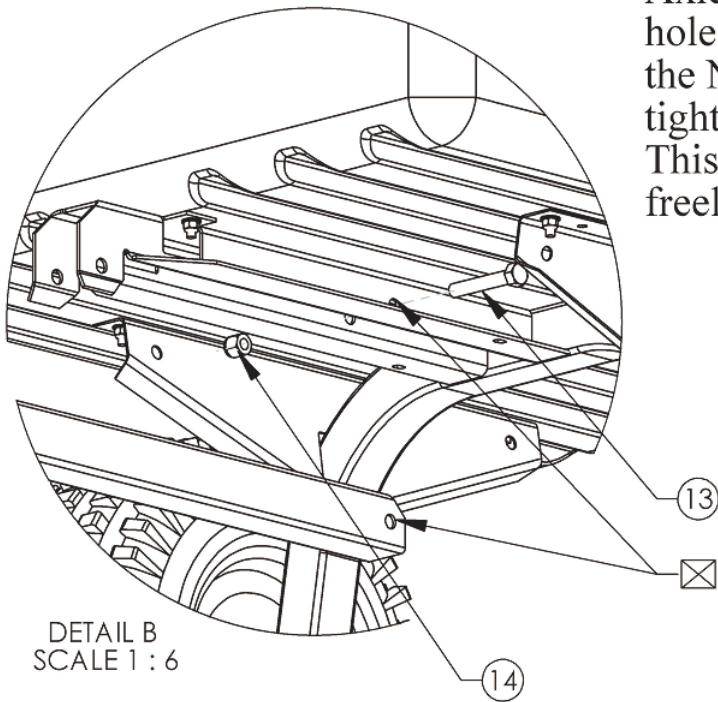
After attaching the Axle Weldment, slide a Shim (11) onto the Axle. Next place the Wheel (4) (air stem facing out) onto the Axle, followed by another Shim (11). Carefully take the E-Clip (5) and slide it into the groove on the outside of the Axle, locking the Wheels and Shims in place. Finally, place the Rubber Cap (6) over the Axle and slide it securely onto the face of the Wheel. Installation for both Wheels is the same.

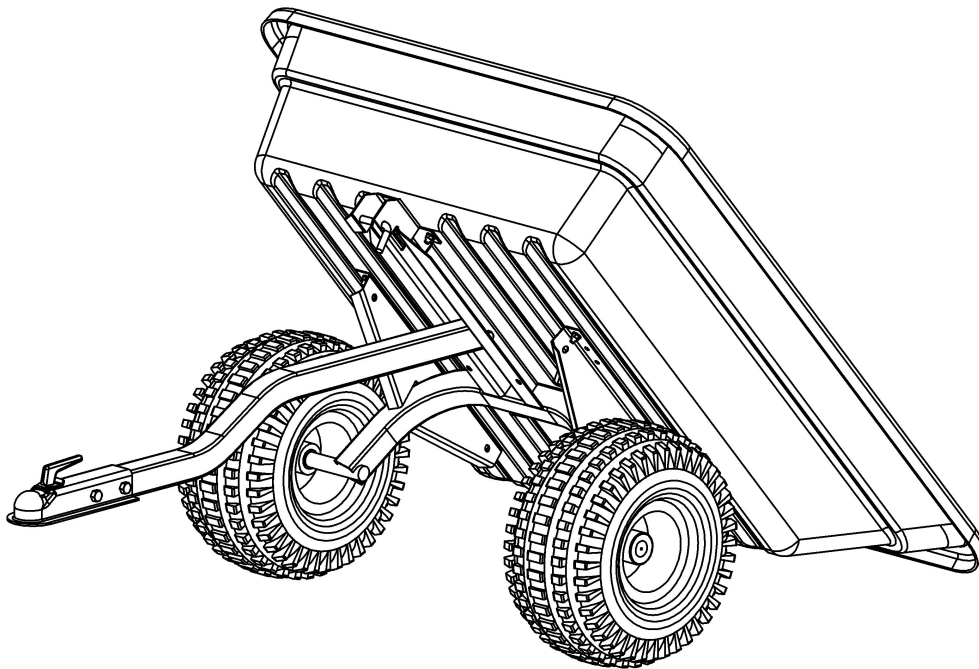
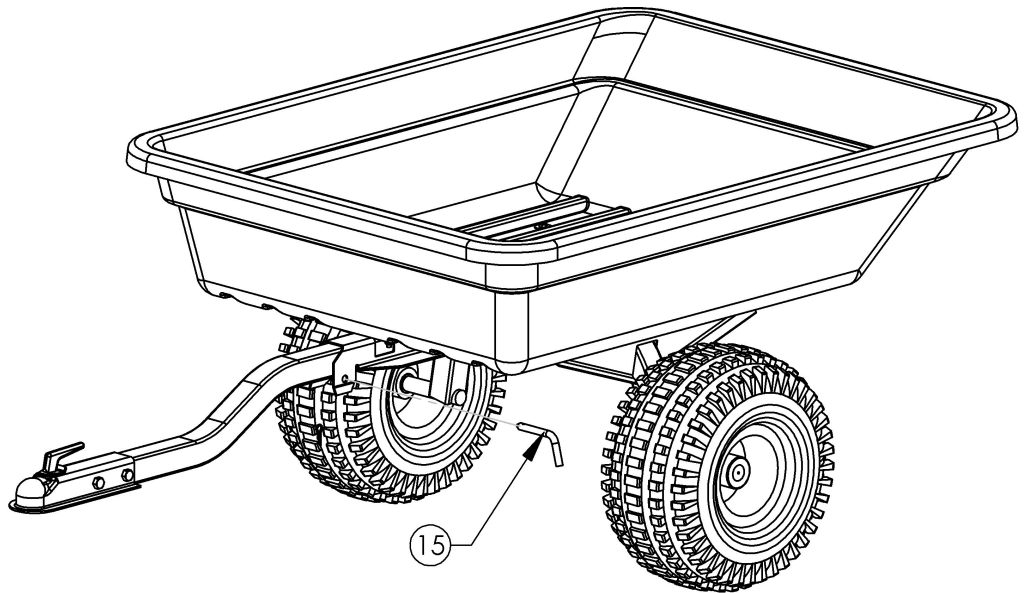


Next, pre-assemble the Tongue by taking the 2" Ball Coupler (12) and attaching it to the Tongue (3) by lining up the holes in the Ball Coupler with the holes in the end of the Tongue. Insert the Bolts (13) as shown and thread the Nuts (12) into place, tightening securely.



Finally, attach the Tongue to the Trailer by placing the Bolt (13) through the holes shown in the Axle Weldment (2) and the rear holes in the Tongue (3). Thread the Nut (14) onto the Bolt until tight and then loosen 1/2 a turn. This will allow the Tub to dump freely without friction.





To empty Trailer, simply pull the Hair Pin, and remove the Bent Pin (15). After Trailer is empty, push it down onto the Tongue and replace the Bent Pin as shown.

**Caution:** *When pulling the Pin, the trailer may swing up quickly depending on the location of the load. It is recommended to place load directly over axles when possible.*





**MANUFACTURING QUALITY LAWN CARE EQUIPMENT SINCE 1945**

## **Owner's Manual**

### **ATV Trailer**

**12007  
750 Lbs or 16 Cu Ft  
&  
12008  
1000 Lbs or 20 Cu Ft**



**IMPORTANT  
Read and follow all  
Safety Precautions  
and Instructions  
Before Operating this  
Equipment.**

## **ATV ACCESSORIES**

**WHEN ORDERING PARTS, PLEASE HAVE THE  
FOLLOWING INFORMATION AVAILABLE:**

- \* **PRODUCT -** \_\_\_\_\_
- \* **SERIAL NUMBER -** \_\_\_\_\_
- \* **MODEL NUMBER -** \_\_\_\_\_
- TYPE -** \_\_\_\_\_
- \* **PART NUMBER WITH PAINT CODE**
- \* **PART DESCRIPTION**

**TELEPHONE - 1-800-222-8183**

**FAX - 1-660-747-8650**

**SWISHER MOWER & MACHINE CO. INC.**

**1602 CORPORATE DRIVE**

**P.O. BOX 67**

**WARRENSBURG, MO 64093**

**[swisherinc.com](http://swisherinc.com)**