

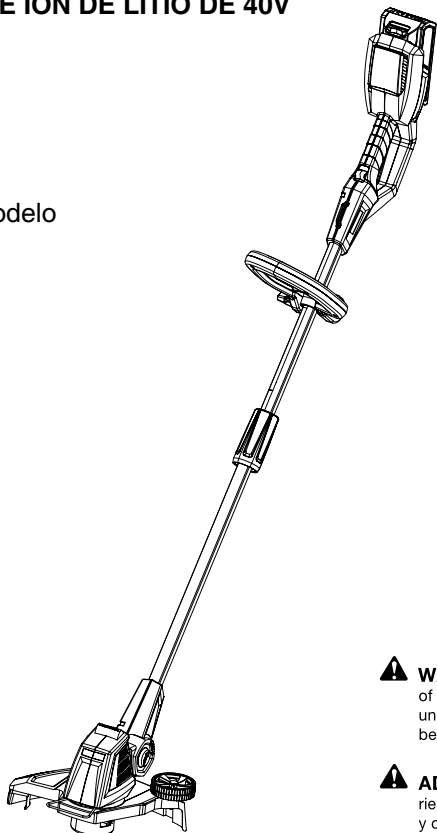
# OPERATOR'S MANUAL MANUEL DEL OPERADOR

## CRAFTSMAN®

### 40V LITHIUM-ION CORDLESS TRIMMER RECORTADOR DE HIERBA Y REBORDEADOR INALÁMBRICO A BATERÍAS DE IÓN DE LITIO DE 40V

Model No.  
138. 99026

Número de modelo  
138. 99026



**⚠ WARNING:** To reduce the risk of injury, the user must read and understand the operator's manual before using this product.

**⚠ ADVERTENCIA:** Para reducir el riesgo de lesiones, el usuario debe leer y comprender el manual del operador antes de usar este producto.

Customer Help Line: 1-888-266-7096  
Teléfono de atención al consumidor: 1-888-266-7096

Sears Brands Management Corporation, Hoffman Estates, IL 60179 USA  
Visit the Craftsman web page: [www.craftsman.com](http://www.craftsman.com)  
Visite el sitio web de Craftsman: [www.craftsman.com](http://www.craftsman.com)

**Save this manual for future reference  
Guardé este manual para futuras consulta**

# TABLE OF CONTENTS / ÍNDICE DE CONTENIDO

## ENGLISH

■ Warranty.....	2
■ Introduction.....	2
■ Important safety instructions.....	3-5
■ Symbols.....	6
■ Features.....	7
■ Assembly.....	7-8
■ Operation.....	9
■ Maintenance.....	10
■ Illustrated parts list.....	11-12
■ Figure numbers (illustrations).....	i-iii

## ESPAÑOL

■ Garantía.....	Inlges seccion .....2
■ Introducción.....	Inlges seccion.....2
■ Instrucciones importantes de seguridad.....	3
■ Símbolos.....	5
■ Características.....	6
■ Armado.....	6
■ Funcionamiento.....	7-8
■ Mantenimiento.....	9
■ Figura numeras (ilustraciones).....	i-iii

### CRAFTSMAN® FOUR YEAR FULL WARRANTY

FOR FOUR YEARS from the date of purchase this product is warranted against any defects in material or workmanship. FOR TWO YEARS from the purchase date a supplied battery pack or charger is warranted against material or workmanship defects. With proof of purchase, a defective product will be replaced free of charge.

**For warranty coverage details to obtain free replacement, visit the web site: [www.craftsman.com](http://www.craftsman.com)**

This warranty is void if this product is ever used while providing commercial services or if rented to another person.

This warranty gives you specific legal rights, and you may also have other rights which vary from state to state.

**Sears Brands Management Corporation, Hoffman Estates, IL 60179**

\*\*\*

### GARANTÍA COMPLETA DE CUATRO AÑOS CRAFTSMAN®

Esta soplador tiene garantía por cualquier defecto en material o mano de obra DURANTE CUATRO AÑOS desde la fecha de compra. Las baterías y el cargador tienen garantía por cualquier defecto durante dos año desde la fecha de compra. Los productos defectuosos se reemplazarán sin cargo.

**Para conocer los detalles sobre la cobertura de la garantía para obtener un remplazo gratuito, visite el sitio web: [www.craftsman.com](http://www.craftsman.com).**

La garantía pierde validez si este producto se utiliza mientras se prestan servicios comerciales o si se alquila a otra persona.

Esta garantía le otorga derechos legales específicos y es posible que también tenga derechos que varían según el estado.

**Sears Brands Management Corporation, Hoffman Estates, IL 60179**

## INTRODUCTION / INTRODUCCIÓN

This tool has many features for making its use more pleasant and enjoyable. Safety, performance, and dependability have been given top priority in the design of this product making it easy to maintain and operate.

\*\*\*

Esta herramienta ofrece numerosas características para hacer más agradable y placentero su uso. En el diseño de este producto se ha conferido prioridad a la seguridad, el desempeño y la fiabilidad, por lo cual se facilita su manejo y mantenimiento.

# IMPORTANT SAFETY INSTRUCTIONS

When using an electrical appliance, basic precautions should always be followed, including the following:



**WARNING:** Read and understand all instructions before using this string trimmer.

- Know your string trimmer. Read operator's manual carefully. Learn its applications and limitations, as well as the specific potential hazards related to this string trimmer. Following this rule will reduce the risk of electric shock, fire, or serious injury.
- Do not leave string trimmer unattended.
- Do not allow children or untrained individuals to use this unit.
- Do not allow to be used as a toy. Close attention is necessary when used by or near children.
- Use only accessories that are recommended by the manufacturer for your model. Accessories that may be suitable for one string trimmer may create a risk of injury when used on another string trimmer.
- Do not handle battery or string trimmer with wet hands.
- Do not put any object into openings. Do not use with any opening blocked; keep free of dust, lint, hair, and anything that may reduce air flow.
- Do not force tool. Use the correct tool for your application. The correct tool will do the job better and safer at the rate for which it is designed.
- Do not operate the equipment while barefoot or when wearing sandals or similar lightweight footwear. Wear protective footwear that will protect your feet and improve your footing on slippery surfaces.
- Keep hair, loose clothing, fingers, and all parts of body away from openings and moving parts.
- Turn off all controls before removing battery.
- Do not operate string trimmer in explosive atmospheres, such as in the presence of flammable liquids, gases, or dust. String trimmer create sparks which may ignite the dust or fumes.
- Keep your work area clean and well lit. Cluttered benches and dark areas invite accidents.
- Keep bystanders, children, and visitors at least 50 ft. away while operating a string trimmer. Distractions can cause you to lose control.
- A battery operated string trimmer with integral batteries or a separate battery pack must be recharged only with the specified charger for the battery.
- A charger that may be suitable for one type of battery may create a risk of fire when used with another battery.
- Use battery operated string trimmer only with specifically designated battery pack. Use of any other batteries may create a risk of fire.
- For use with Craftsman 40 V lithium-ion battery packs (#29111 2Ah and #29131 4Ah). Refer to your battery owners manual for further information.
- Do not operate charger with a damaged cord or plug, which could cause shorting and electric shock. If damaged, have the charger replaced by an authorized service center.
- Stay alert, watch what you are doing and use common sense when operating a string trimmer. Do not use string trimmer while tired, upset, or under the influence of drugs, alcohol, or medication. A moment of inattention while operating string trimmer may result in serious personal injury.
- Store idle appliances - When not in use, string trimmer should be stored indoors in a dry, locked place out of the reach of children.
- Dress properly. Do not wear loose clothing or jewelry. Keep your hair, clothing, and gloves away from moving parts. Loose clothes, jewelry, or long hair can be caught in moving parts.
- Secure long hair above shoulder level to prevent entanglement in moving parts.
- Avoid accidental starting. Be sure switch is in the locked or off position before inserting battery pack. Carrying string trimmer with your finger on the switch or inserting the battery pack into a string trimmer with the switch on invites accidents.
- Use safety equipment. Always wear eye protection that complies with ANSI Z87.1.
- Dust mask, non-skid safety shoes, or hearing protection must be used for appropriate conditions.
- Do not wear loose clothing or jewelry. Contain long hair. Loose clothes, jewelry, or long hair can be drawn into air vents.
- Do not use on a ladder, rooftop, tree, or other unstable support. Stable footing on a solid surface enables better control of the string trimmer in unexpected situations.
- Do not use string trimmer if switch does not turn it on or off. A string trimmer that cannot be controlled with the switch is dangerous and must be repaired.
- Disconnect battery pack from string trimmer or place the switch in the locked or off position before making any adjustments, changing accessories, or storing the string trimmer. Such preventive safety measures reduce the risk of starting the string trimmer accidentally.
- When battery pack is not in use, keep it away from other metal objects like: paper clips, coins, keys, nails, screws, or other small metal objects that can make a connection from one terminal to another.

# IMPORTANT SAFETY INSTRUCTIONS

- Shorting the battery terminals together may cause sparks, burns, or a fire.
- Check for misalignment or binding of moving parts, breakage of parts, and any other condition that may affect the string trimmer's operation. If damaged, have the string trimmer serviced before using. Many accidents are caused by poorly maintained string trimmers.
- Keep the string trimmer and its handle dry, clean and free from oil and grease. Always use a clean cloth when cleaning. Never use brake fluids, gasoline, petroleum based products, or any strong solvents to clean your string trimmer. Following this rule will reduce the risk of loss of control and deterioration of the enclosure plastic. Always wear safety glasses with side shields. Everyday glasses have only impact resistant lenses. They are NOT safety glasses. Following this rule will reduce the risk of eye injury.
- Always wear eye protection with side shields marked to comply with ANSI Z87.1 along with hearing protection when operating this equipment.
- Protect your lungs. Wear a face or dust mask if the operation is dusty. Following this rule will reduce the risk of serious personal injury.
- Protect your hearing. Wear hearing protection during extended periods of operation. Following this rule will reduce the risk of serious personal injury.
- Battery string trimmers do not have to be plugged into an electrical outlet; therefore, they are always in operating condition. Be aware of possible hazards when not using your battery powered string trimmer or when changing accessories. Following this rule will reduce the risk of electric shock, fire, or serious personal injury.
- Do not place battery powered string trimmers or their batteries near fire or heat. This will reduce the risk of explosion and possibly injury.
- Do not crush, drop or damage battery pack. Do not use a battery pack or charger that has been dropped or received a sharp blow. A damaged battery is subject to explosion. Properly dispose of a dropped or damaged battery immediately.
- Don't expose string trimmers to rain or wet conditions.
- Water entering a string trimmer will increase the risk of electric shock.
- Wear heavy long pants, long sleeves, boots, and gloves. Avoid loose garments or jewelry that could get caught in moving parts of the machine or its motor.
- Do not operate the equipment while barefoot or when wearing sandals or similar lightweight footwear. Wear protective footwear that will protect your feet and improve your footing on slippery surfaces.
- Batteries can explode in the presence of a source of ignition, such as a pilot light. To reduce the risk of serious personal injury, never use any cordless product in the presence of open flame. An exploded battery can propel debris and chemicals. If exposed, flush with water immediately.
- Do not charge string trimmer battery in a damp or wet location. Following this rule will reduce the risk of electric shock.
- Keep firm footing and balance. Do not overreach. Overreaching can result in loss of balance.
- Check the work area before each use. Remove all objects such as rocks, broken glass, nails, wire, or string which can be thrown or become entangled in the machine.
- Do not point the string trimmer nozzle in the direction of people or pets.
- Never run the unit without the proper equipment attached. Always ensure the string trimmer are installed.
- When not in use, string trimmer should be stored indoors in a dry, locked up place—out of the reach of children.
- Keep all bystanders, children, and pets at least 50 ft. away.
- For best results, your string trimmer battery should be charged in a location where the temperature is more than 50°F but less than 100°F. Do not store outside or in vehicles.
- Under extreme usage or temperature conditions, battery leakage may occur. If liquid comes in contact with your skin, wash immediately with soap and water. If liquid gets into your eyes, flush them with clean water for at least 10 minutes, then seek immediate medical attention. Following this rule will reduce the risk of serious personal injury.
- Do not incinerate this string trimmer even if it is severely damaged. The batteries can explode in a fire.
- String trimmer service must be performed only by qualified repair personnel. Service or maintenance performed by unqualified personnel may result in a risk of injury.
- Save these instructions. Refer to them frequently and use them to instruct others who may use this tool. If you loan someone this tool, loan them these instructions also.

# IMPORTANT SAFETY INSTRUCTIONS

## CALIFORNIA PROPOSITION 65

---



**WARNING:** This product and some dust created by power sanding, sawing, grinding, drilling, and other construction activities may contain chemicals, including lead, known to cause cancer, birth defects or other reproductive harm. Wash hands after handling.

Some examples of these chemicals are:




- lead from lead-based paints,
- crystalline silica from bricks and cement and other masonry products, and
- arsenic and chromium from chemically-treated lumber.










Your risk from these exposures varies, depending on how often you do this type of work. To reduce your exposure to these chemicals: work in a well ventilated area, and work with approved safety equipment, such as those dust masks that are specially designed to filter out microscopic particles.

## SAVE THESE INSTRUCTIONS

# SYMBOLS

The following signal words and meanings are intended to explain the levels of risk associated with this product.

SYMBOL	SIGNAL	MEANING
	<b>DANGER:</b>	Indicates an imminently hazardous situation, which, if not avoided, will result in death or serious injury.
	<b>WARNING:</b>	Indicates a potentially hazardous situation, which, if not avoided, could result in death or serious injury.
	<b>CAUTION:</b>	Indicates a potentially hazardous situation, which, if not avoided, may result in minor or moderate injury.
	<b>CAUTION:</b>	(Without Safety Alert Symbol) Indicates a situation that may result in property damage.

SYMBOL	NAME	DESIGNATION/EXPLANATION
V	Volts	Voltage
A	Amperes	Current
Hz	Hertz	Frequency (cycles per second)
W	Watts	Power
min	Minutes	Time
~	Alternating Current	Type of current
≡	Direct Current	Type or a characteristic of current
	Class II Construction	Double-insulated construction
	No Load Speed	Rational speed, at no load
/min	Per Minute	Revolutions, strokes, surface speed, orbits etc., per minute
	Wet Conditions Alert	Do not expose to rain or use in damp locations
	Read The Operator's Manual	To reduce the risk of injury user must read and understand operator's manual before using this product.
	Eye Protection	Always wear eye protection with side shields marked to comply with ANSI Z87.1.
	Safety Alert	Precautions that involve your safety.
	Long Hair	Failure to keep long hair away from the air inlet could result in personal injury.
	Loose Clothing	Failure to keep loose clothing from being drawn into air intake could result in personal injury.
	Keep Bystanders Away	Keep all bystanders at least 50 ft. away.

# FEATURES

## PRODUCT SPECIFICATIONS

Motor.....	40 V DC
Speed:.....	8000/9000 RPM no load
Weight (without battery pack).....	5.5 lbs

## KNOW YOUR TRIMMER

See Figure 1, page i.

The safe use of this product requires an understanding of the information on the tool and in this operator's manual as well as a knowledge of the project you are attempting. Before use of this product, familiarize yourself with all operating features and safety rules.

# ASSEMBLY

To avoid injury and reduce the risk of electrical shock or fire:



**WARNING:** • Replace the battery pack or charger immediately if the battery case or charger cord is damaged.

- Always make sure the string trimmer switch is OFF before inserting or removing the battery pack.
- Always make sure the battery pack is removed and the switch turned OFF, before inspecting, adjusting, or maintaining any other part of the hedge trimmer.
- Read, understand, and follow the Battery Charger instructions.

## ASSEMBLING THE GUARD See Figure 2, page ii.

To avoid injury, always remove the battery pack before installing the guard, changing a cutting line, or making any adjustments. If the guard is damaged, do not use the grass trimmer/edger until it is replaced.

- Remove the battery pack.
- Invert the grass trimmer/edger to access the trimmer head.
- Using a Phillips head screwdriver, remove the pre-installed screw (1) from the trimmer head.
- Place the guard (2) on to the trimmer head and turn the guard 45° following the track on the head.
- Align the screw hole on the guard with the screw hole on the trimmer head.
- Insert the screw into the trimmer head, fastening the guard in place.

## ASSEMBLING AUXILIARY HANDLE See Figure 3, page ii.



**WARNING:** To avoid injury, adjust the auxiliary handle for optimum control and balance. Do not overreach when operating grass trimmer/edger. Keep proper balance at all times for better control of the tool in unexpected situations.

## CONNECTING UPPER/LOWER TRIMMER SHAFT

See Figure 3, page ii.

With lower shaft pointing downward insert lower shaft into upper shaft and turn shaft collar clockwise to tighten.

## ADJUST THE CUTTING WIDTH See Figure 4, page ii.

Use Phillips head screwdriver to adjust cutting blade from 10 to 12"

## CUTTING LINE See Figure 5 page ii.

A spool of monofilament cutting line is pre-installed on the grass trimmer/edger. When the cutting line needs replacing, insert a new spool. To avoid injury, always remove the battery pack before installing the guard, changing a cutting line, or making any adjustments.

## TO REMOVE THE SPOOL:

1. Disconnect trimmer from the power supply.
2. Turn grass trimmer/edger over to access the spool.
3. Remove spool cover by pressing on two tabs parallel to each other on the side of the cover (2).
4. Remove the spool (1) from the spool housing (3).

# ASSEMBLY

## TO REPLACE THE SPOOL:

1. Replace the spool (1) with a new pre-wound spool.
2. Insert the end of line through the opening (4) in the spool housing (3).
3. Align the tabs on the spool cover with the slots in the spool housing on the trimmer head.
4. Push down on the spool cover locking it to the spool housing.
5. To advance the line when initially installed, you must pull the line while pressing the black line release button on the side of the spool housing (3).

See Replacement Parts section for part number and ordering information. Replacement Spool: Purchase Spool Model# 64212 at a Sears store or at Sears.com.

## TO REFILL THE SPOOL: See Figure 6, page ii.

1. Cut a length of .065" (1.65 mm) nylon monofilament line (1) approximately 18' (5.5 m) long.

Insert end of line into the small hole (2) of an empty spool to anchor the line.

3. Wind the line evenly and tightly in a clockwise direction.
4. DO NOT wind the line beyond the edge (3) of the spool.
5. Insert the line through hole (4) in the spool housing.
6. Position line spool (5) in spool housing (6).

## BATTERY

**IMPORTANT!** The battery pack is not charged when it is purchased. Before using the trimmer for the first time, place the battery pack in the battery charger and charge. Make sure to read all safety precautions, and follow the instructions in the the Battery Charger section.

## To remove See Figure 7, page ii.

1. Press the latch button (1) on the battery pack down and hold.
2. Grasp the trimmer(2) firmly, and pull the battery pack out of the handle.

Note: The battery pack fits into the handle snugly in order to prevent accidental dislodging. It may require a strong pull to remove it.

## To install

1. Align the tongue (3) of the battery pack with the cavity in the string trimmer rear handle housing
2. Grasp the trimmer(2) firmly.
3. Push the battery pack into the handle until the latch locks into place.
4. Do not use force when inserting the battery pack. It should slide into position and "click".



## WARNING:

Follow these instructions in order to avoid injury and to reduce the risk of electric shock or fire:

- Replace the battery pack or the charger immediately if the battery case or charger cord is damaged.
- Verify that the switch is in the OFF position before inserting or removing the battery pack.
- Verify that the battery pack is removed and the switch is in the OFF position before inspecting, adjusting, or performing maintenance on any part of the trimmer.
- Read, understand, and follow the instructions contained in the section entitled Charging Procedure.



# OPERATION

## **WARNING:** To avoid injury:

- Do not squeeze the trigger while the grass trimmer/edger is inverted.

Do not carry the grass trimmer/edger with your finger on the switch. Avoid unintentional starting.

**To Turn On / Off :** See Figure 8, page iii.

1. Press the safety lock out button (2) and squeeze the trigger switch (1) to start.
2. Release the trigger switch (1) to stop.

## **CAUTION:**

Always allow 5 seconds or more for the cutting line spool to stop rotating after releasing the trigger switch. Do not invert the grass trimmer/edger, or place your hands under the protective guard until the grass trimmer/edger spool has come to a complete stop.

**Edging Function** See Figure 9, page iii.

For use next to patios, driveways and walkways or any areas requiring a well groomed edge line.

1. Push on the edge button (1) and tilt the trimmer head 90 degrees until the head locks into position and release button.

**IMPORTANT:** The battery must be removed before making adjustments

### **Pivoting Head Function**

Adjust pivoting head to trim hard to reach areas and for user comfort. (See Figure 10, page iii)

### **Lengthening the Line**

While the grass trimmer/edger is operating, the cutting line gets worn down and becomes shorter. This trimmer is equipped with Automatic Line Advancement which automatically feeds additional line to the correct length as it wears down. If the line does not auto advance the trimmer line may be tangled or empty. To advance the line, stop and restart the trimmer. Upon starting, the line will automatically advance 1/4" (6.4 mm).

### **Trimmer Tips**

- If the battery must be stored in a warm place, charge it frequently.
- Before trimming, inspect the area for string, wire, branches or other material that may become entangled in the cutting line and thrown.

### **During use**

- Trim only when the grass and weeds are dry.
- Do not trim grass at night. Always make sure you have adequate lighting.
- Hold the grass trimmer/edger by both the switch handle and the auxiliary handle for best control and balance.
- Stand with the cutting head tipped down at an angle in front, guiding the grass trimmer/edger in a semicircular motion around you.
- If possible, guide the grass trimmer/edger to the left to cut. The line will cut as soon as it leaves the guard, and the clippings are thrown away from you.
- To produce a smoothly trimmed area, move the grass trimmer/edger out of the area being cut with consistent speed and height.
- Use only the tip of the cutting line to do the trimming, especially near walls and fences. Trimming with the side of the cutting line may overload the motor, wear out the line faster, and break the line more often.
- Do not rest the trimmer spool on the ground while trimming. This will cause spool wear and battery drain.
- If the grass is higher than 6" (15 cm), trim in small stages.
- When the grass trimmer/edger is turned off and the spool stops rotating, the cutting line will relax and may recede. Feed extra cutting line before storing the trimmer to prevent losing the line completely into the spool.
- If the diameter of the cutting area gets smaller, the line is worn down and needs to be advanced more often.
- If the grass trimmer/edger is not cutting correctly, the cutting line may not be feeding properly. Remove and rewind the line spool.

# MAINTENANCE

## **WARNING:**

In order to avoid personal injury and the risk of fire and electric shock, remove the battery pack before adjusting, inspecting, or cleaning the trimmer


### **Cleaning**

Remove the battery pack.

1. Brush or blow dust and debris out of the air vents using compressed air or a vacuum. Keep the air vents free of obstructions, sawdust, and wood chips. Do not spray, wash, or immerse the air vents in water.
2. Wipe off the housing and the plastic components using a moist, soft cloth. Do not use strong solvents or detergents on the plastic housing or plastic components. Certain household cleaners may cause damage, and may cause a shock hazard.

Replacement parts should only be installed by qualified repair personnel.

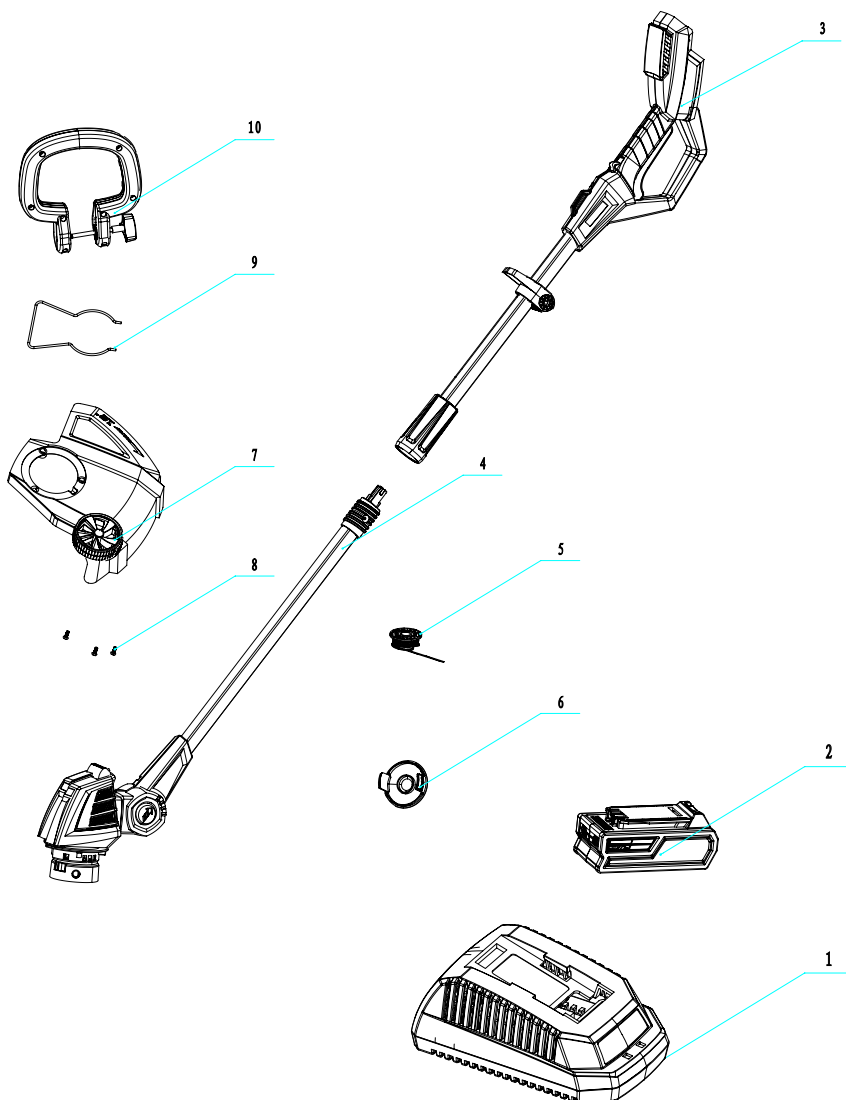
### **BATTERY PACK REMOVAL AND PREPARATION FOR RECYCLING**

 **WARNING:** Upon removal, cover the battery pack's terminals with heavy-duty adhesive tape. Do not attempt to destroy or disassemble battery pack or remove any of its components. Lithium-ion and nickel-cadmium batteries must be recycled or disposed of properly. Also, never touch both terminals with metal objects and/or body parts as short circuit may result. Keep away from children. Failure to comply with these warnings could result in fire and/ or serious injury.

- Clean all foreign material from the trimmer
- Store indoors in a place that is inaccessible to children. Keep away from corrosive agents such as garden chemicals and de-icing salts.

## CRAFTSMAN 40 VOLT TRIMMER – MODEL NUMBER 138. 99026

The model number will be found on a label attached to the shaft. Always mention the model number when calling to order replacement parts. To order parts, call 1-888-266-7096.



**CRAFTSMAN 40 VOLT TRIMMER – MODEL NUMBER 138. 99026**

The model number will be found on a label attached to the shaft. Always mention the model number when calling to order replacement parts. To order parts, call 1-888-266-7096.

**PARTS LIST**

ITEM NO.	PART NO.	DESCRIPTION	QTY
1	31101998	Battery Charger	1
2	31102996	Battery Pack	1
3	31106884	Upper Handle	1
4	31105884	Lower Handle and motor housing	1
5	31105710	Spool of Trimmer Line	1
6	3411546A-12	Spool Cover	1
7	31103884	Guard	1
8	3220905	Screw	3
9	33301708	Edge Guide	1
10	31107884	Front Handle	1

**See this section for all of the figures referenced in the operator's manual.**

**Consulte esta sección para ver todas las figuras a las que se hace referencia en el manual del operador.**

Fig. 1

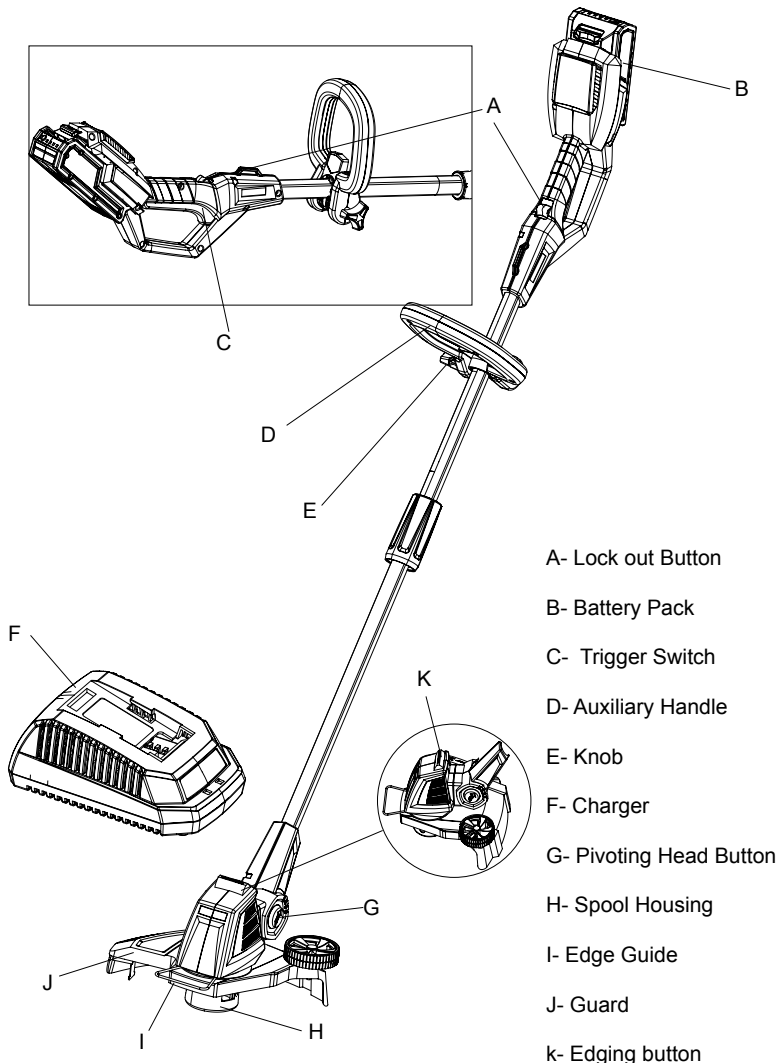


Fig. 2

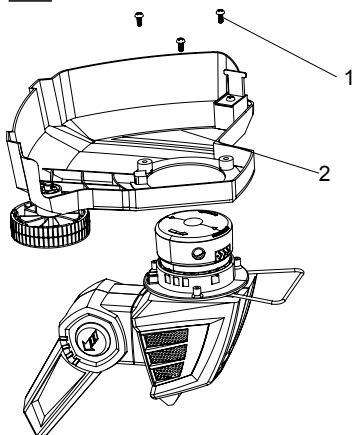


Fig. 3

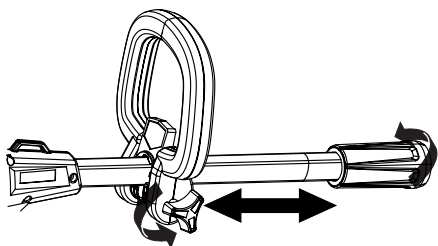


Fig. 4

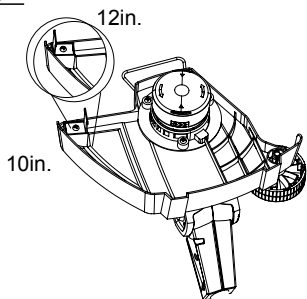


Fig. 5

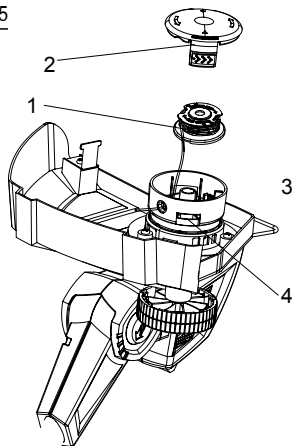


Fig. 6

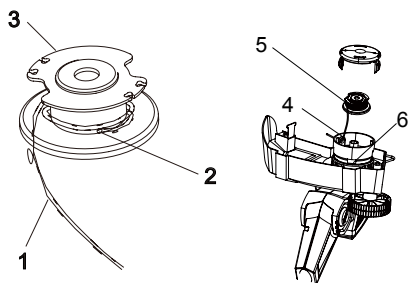


Fig. 7

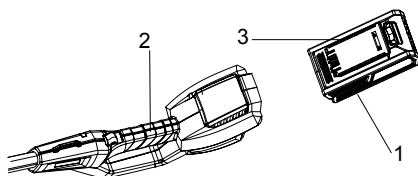


Fig. 8

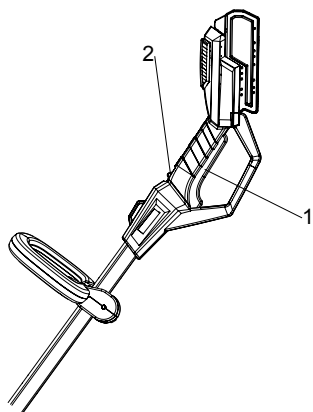


Fig. 10

Trimming Position

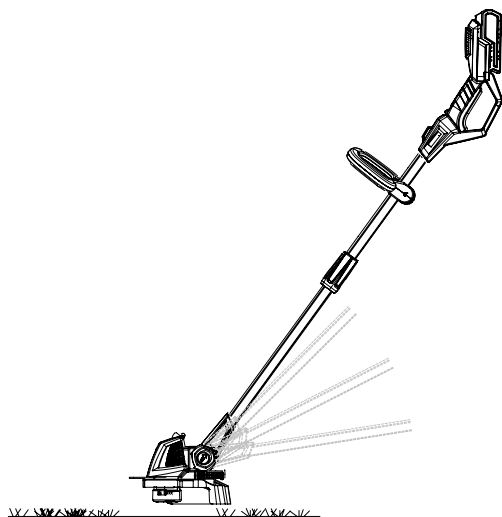


Fig. 9

Edging Position

