

Please carefully read and save these instructions before attempting to assemble, maintain, install, or operate this product. Observe all safety information to protect yourself and others. Failure to observe the instructions may result in property damage and/or personal injury. Please keep instructions for future reference.

Important Operating Instructions



20 GALLON AIR COMPRESSOR KIT

Model: 8463

DO NOT RETURN TO STORE

Please call 800-348-5004 for parts and service

CALIFORNIA PROPOSITION 65

WARNING: You can create dust when you cut, sand, drill or grind materials such as wood, paint, metal, concrete, cement, or other masonry. This dust often contains chemicals known to cause cancer, birth defects, or other reproductive harm. Wear protective gear.

WARNING: This product or its power cord may contain chemicals, including lead, known to the State of California to cause cancer and birth defects or other reproductive harm. Wash hands after handling.

Important!

When using equipment, a few safety precautions must be observed to avoid injuries and damage. Please read the complete operating manual with due care. Keep this manual in a safe place, so that the information is available

at all times. If you give the equipment to any other person, give them these operating instructions as well. We accept no liability for damage or accidents which arise due to non-observance of these instructions and the safety information herein.

SPECIFICATIONS

Horsepower: 2 HP Running

Maximum PSI: 125 PSI

Tank Capacity: 20 Gallons

CFM: 6 CFM @ 40 PSI

5 CFM @ 90 PSI

CAUTION:
FOR YOUR OWN SAFETY,
READ INSTRUCTION
MANUAL COMPLETELY AND
CAREFULLY BEFORE
OPERATING THIS 20
GALLON AIR COMPRESSOR.

Any failures made in following the safety regulations and instructions may result in an electric shock, fire and/or serious injury.

FEATURES

- Dual quick-connect manifold for running multiple tools
- Space-saving vertical design
- Oil-lubricated solid cast iron pump for extended life and heavy-duty use
- Reliable direct drive motor
- Side port valve for stationary applications

SAFETY INSTRUCTIONS

To reduce the risk of fire or explosion, never spray flammable liquids in a confined area. It is normal for the motor and pressure switch to produce sparks while operating. If sparks come into contact with vapors from gasoline or other solvents, they may ignite, causing a fire or explosion. Always operate the compressor in a well-ventilated area. Do not smoke while spraying. Do not spray where sparks or flames are present. Keep compressor as far away from the spray area as possible.

For warranty purchases, please keep your dated proof of purchase. File or attach to the manual for safekeeping.

The solvents trichloroethane and Methylene Chloride can chemically react with aluminum used in paint spray guns, paint pumps, etc. and cause an explosion. If you are using these solvents, use only stainless steel spray equipment. This does not affect your air compressor, but may affect the equipment being used.

Never directly inhale compressed air produced by a compressor. It is not suitable for breathing purposes.

Do not weld on the air tank of this compressor. Welding on the air compressor tank may weaken the tank and result in extremely hazardous conditions. Welding on the tank in any manner will void the warranty.

Never use an electric air compressor outdoors when it is raining or on a wet surface, as it may cause electric shock.

When not in use or before servicing, make sure that the compressor is turned off, unplugged from the power source, and all pressure has been released from the unit.

Check the manufacturer's maximum pressure rating for air tools and accessories. The compressor outlet pressure must be regulated so that it never exceeds the maximum pressure rating of the tool.

High temperatures and moving parts are present under the shroud. In order to prevent burns or other injuries, do not

operate with the shroud removed. Allow the compressor parts to cool before handling or servicing.

Be certain to read all the labels and follow all safety instructions when you are spraying paint or toxic materials. If there is a chance of inhaling anything you are spraying, use a respirator mask. Read all instructions and be sure that your respirator mask will protect you from the fumes.

Always wear safety goggles or glasses when using an air compressor. Never point the nozzle or sprayer toward a person or any part of the body.

Do not adjust the pressure switch or relief valve for any reason. Doing so will void the warranty. The compressor is preset for the maximum pressure of the unit.

Drain the moisture from the tank on a daily basis. A clean, dry tank will help prevent corrosion.

Pull the pressure relief valve ring daily to ensure that the valve is functioning properly, and to clear the valve of any possible obstructions.

To provide proper ventilation for cooling, the compressor must be kept at a minimum of a foot from the nearest wall, in a well-ventilated area.

Fasten the compressor down securely. If transporting is necessary, the pressure must be released from the tank before transporting.

Protect the air hose and electric cord from damage and puncture. Inspect them weekly for weak or worn spots and replace, if necessary.

WARNING

Disconnect the power and release all pressure from the system before attempting to install, service, relocate, or perform any maintenance.

Follow all electrical and safety codes as well as National Electrical Codes (NEC) and Occupational Safety and Health Act (OSHA).

Electric motors and starters must be securely and adequately grounded using a three-pronged outlet.

CAUTION

Never use an extension cord with this product. Use additional air hose instead of an extension cord to avoid power loss and permanent motor damage. Use of an extension cord will void the warranty.

OPERATING PRINCIPLE AND COMPONENTS CHARACTERISTIC

1. OPERATION PRINCIPLE

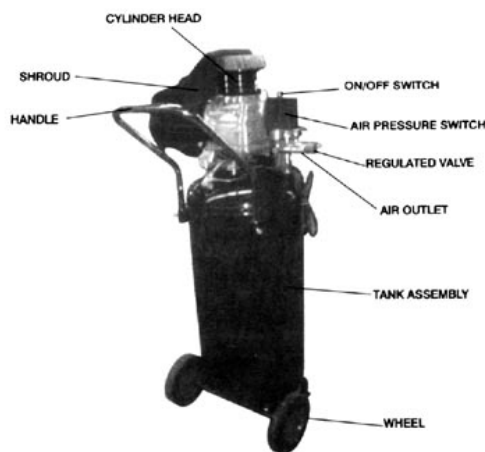
The compressor is driven by the motor directly. The crankshaft turns to drive the connecting rod up and down; the connecting rod drives the piston back and forth. The piston's movement leads to the air pressure in the cylinder.

The air valve in the cylinder head makes the natural air enter into the cylinder through the air filter,

and then the compressed air pressure enters the tank through the pipe. Finally, connect the air hose to the tool, making the tool operate.

2. COMPONENTS CHARACTERISTIC

The compressor motor is a direct-drive, single-stage, z type reciprocation air-cooled compressor. The valve structure is a strip-style valve. Its cooling and lubricating is reasonable and its performance is reliable.



APPLICATION

The compressors are widely used in various pneumatic tools and machines of communication, machinery manufacturers, medical and health, garments, spinning and weaving works, such as tire, gas-filled, painting, etc.

OPERATION, LUBRICATION, AND MAINTENANCE

After opening your tool, make sure that you have all of the safety manuals, all of the spare parts, and carefully inspect the compressor for any damage.

Pull out the oil ruler. During the winter, fill the tank to the stipulated level with N32 machine lubricating oil. In the summer, fill the tank with N68 machine lubricating oil. After filling, reinsert the oil ruler, plug in the power cord, and operate the compressor without load. Check to make sure that it is operating properly.

Connect the pneumatic tool to the air compressor, and then start the compressor. You may now use your tool.

NOTE: The compressor should be started without any working pressure.

The compressor uses machine lubricating oil. Fill the compressor with oil before starting. During operation, the oil temperature must be below 158°F. (Use N32 in the winter and N68 in the summer.)

After 500 hours of operation, replace the oil, disassemble the crankcase and cover, and clean the old oil and dirty things. After giving the compressor a thorough cleaning, reassemble the crankcase and cover, and fill the tank with fresh oil.

Clean the air filter once every week.

After 16 hours of operation, open the petcock and drain the water from the tank. Clean the tank once every 6 months.

After each use, turn off the power and drain all the pressure from the tank.

In order to maintain the compressor normally, disassemble the compressor, then with a light oil, such as gasoline, clean all the parts. After cleaning, dry the parts thoroughly. When reassembling, smear grease on the touching surfaces. If necessary, repair or replace worn or broken parts. Reassemble and adjust the parts correctly.

NOTE: Electric units should be ground correctly.

If the compressor is not going to be used for an extended period of time, the air valves and touching surfaces should be cleaned and smeared with grease.

Troubleshooting Guide

Symptom	Possible Cause(s)	Corrective Action
Compressor will not run	No electrical power	Check to see if it is plugged in. Check the fuse/breaker
	Blown fuse	Replace blown fuse
	Breaker down	Reset. Determine why the problem happened
	Thermal overload open	Motor will restart when cool (approx. 15 minutes)
	Pressure switch bad	Contact authorized service center
Motor hums but does not run or runs slowly	Low voltage	Check with voltmeter (105v min)
	Shorted or open motor winding	Contact authorized service center
	Defective check valve or pressure switch	Contact authorized service center
	Compressed air in cylinder	Turn the AUTO/OFF switch to the OFF position for 15 sec., then turn to the AUTO position
Fuses blow/circuit breaker trips repeatedly CAUTION! Never use an extension cord with this product	Incorrect size fuse/circuit overloaded	Check for proper fuse. Use time-delay fuse. Disconnect from other electrical appliances from circuit or operate compressor on its own branch circuit
	Defective check valve or pressure switch	Contact authorized service center
Thermal overload protector cuts off repeatedly	Low voltage	Check with voltmeter (105v min)
	Clogged air filter	Clean filter (See MAINTENANCE section, p. 3)
	Lack of proper ventilation/room temperature too high	Move the compressor to a well-ventilated area

Troubleshooting Guide

Symptom	Possible Cause(s)	Corrective Action
Tank pressure drops when compressor shuts off	Loose connections (fittings, tubing, etc.)	Check for air leaks. Use sealing tape on all leaking connections
	Open draincock	Tighten draincock
	Check valve leaking	Disassemble check valve assembly. Clean or replace. DANGER! Do not disassemble check valve with air in tank. Bleed tank first.
Excessive moisture in discharge air	Excessive water in tank	Drain receiver
	High humidity	Move compressor to area of less humidity; use air line filter
	Clogged intake filter	Clean or replace filter
Compressor runs continually	Defective pressure switch	Replace switch
	Excessive air usage	Compressor not large enough to meet CFM requirement for the air tool
Compressor vibrates	Loose mounting bolts	Tighten bolts
	Rubber tank feet worn/missing	Replace tank feet
Air output lower than normal	Open draincock	Tighten draincock
	Intake filter dirty	Clean or replace intake filter
	Connection leaking	Tighten connections

Limited Manufacturer Warranty

North American Tool Industries (NATI) makes every effort to ensure that this product meets high quality and durability standards. NATI warrants to the original retail consumer a 1-year limited warranty from the date the product was purchased at retail and each product is free from defects in materials. Warranty does not apply to defects due directly or indirectly to misuse, abuse, negligence, or accidents, repairs or alterations, or a lack of maintenance. NAT shall in no event be liable for death, injuries to persons or property, or for incidental, special, or consequential damages arising from the use of our products. To receive service under warranty, the original manufacturer part must be returned for examination by an authorized service center. Shipping and handling charges may apply. If a defect is found, NATI will either repair or replace the product at its discretion.

DO NOT RETURN TO STORE

For Customer Service:

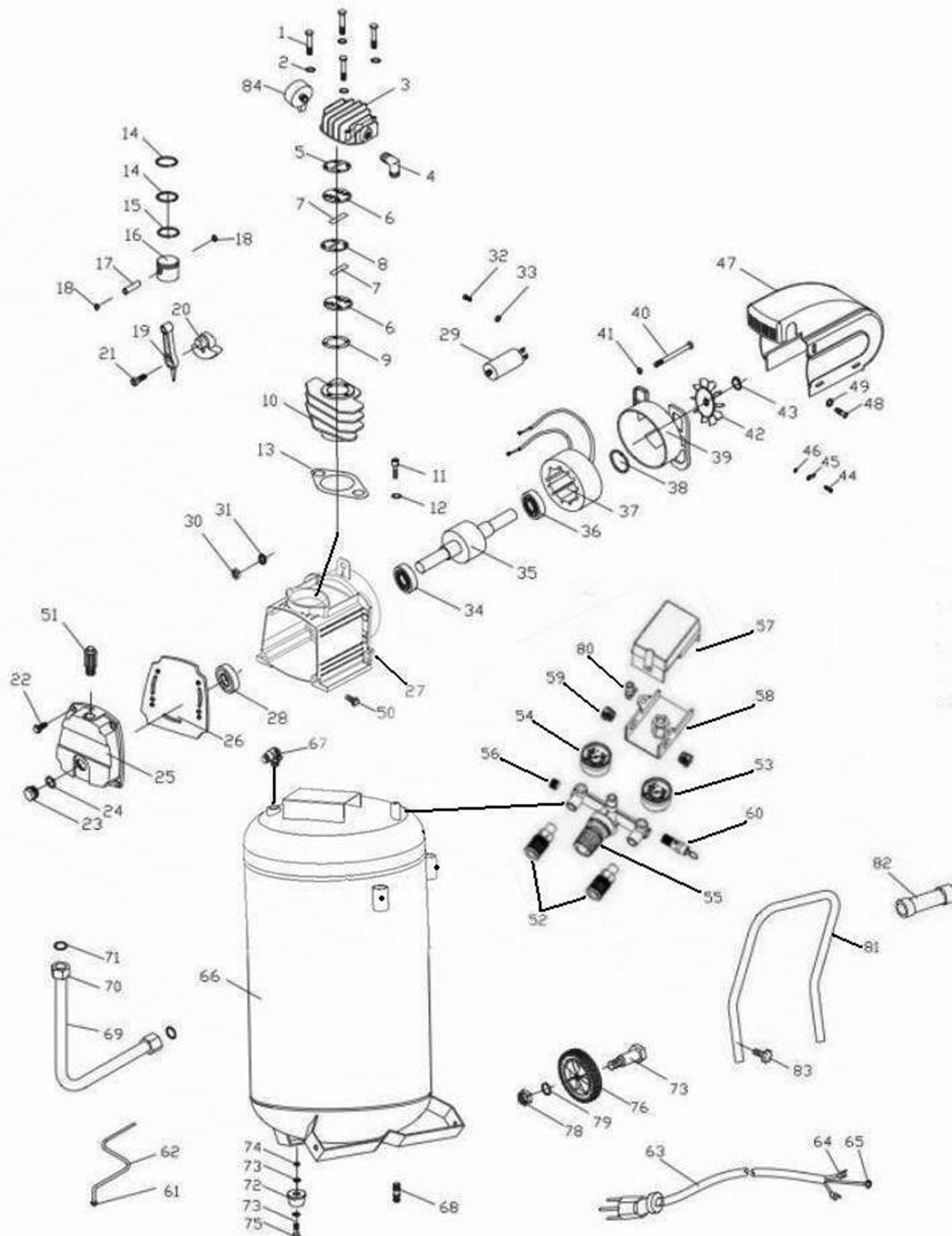
Email: feedback@natitools.com or Call 1-800-348-5004



20 GALLON AIR COMPRESSOR KIT

Model: 8463

Parts List



Call 1-800-348-5004 for assistance or replacement parts

Please provide the following information:

- Model number
- Part description and number as shown in parts list
- Serial number (if any)

Address any correspondence to:

North American Tool Industries
84 Commercial Rd
Huntington, IN 46750

#	Description	QTY.	#	Description	QTY.
1	Bolt M6x55	4	43	circlip 14	1
2	Spring Washer M6	4	44	screw m4x6	1
3	Cylinder Head	1	45	grounding signal	1
4	Exhaust Elbow	1	46	washer 4	1
5	Gasket of Cylinder Head	1	47	shroud	1
6	Valve Plate	2	48	tapping screw ST4.2x12	2
7	valve reed	2	49	washer m5	2
8	gasket of valve plate	1	50	boit m6x18	4
9	Gasket of cylinder upper	1	51	oil fill cap	1
10	cylinder	1	52	quick coupler	1
11	screw m8x25	2	53	pressure gauge y40	1
12	spring wasehr m8	2	54	pressure gauge y50	1
13	gasket of cylinder lower	1	55	regulator	1
14	compression ring	2	56	connect npt1/4x30	1
15	oil ring	1	57	connect of pressure switch	1
16	piston	1	58	pressure switch	1
17	piton pin	1	59	nut of pressure switch	1
18	circlip 12	2	60	safety valve	1
19	connect rod	1	61	relief nut	1
20	eccentric	1	62	relief tube	1
21	screw m8x22	1	63	power cord	1
22	bolt m6x18	4	64	cable connector U	2
23	oil sight gauge	1	65	cable connector O	1
24	seal of oil sight gauge	1	66	Tank	1
25	crankcase cover	1	67	check valve	1
26	gasket of crankcase cover	1	68	drain valve	1
27	crankcase	1	69	pressure tube	1
28	oil seal	1	70	compression nut	2
29	capacitor	1	71	washer	2/2
30	nut m8	1	72	rubber foot	1
31	inner teeth washer m8	1	73	washer m8	2
32	screw m3x6	2	74	nut m8	1
33	spring washer m3	2	75	nolt m8x20	1
34	bearing 6204	1	76	wheel	2
35	rotor	1	77	axle	2
36	bearing 6202	1	78	nut m10	2
37	stator	1	79	spring washer m10	2
38	washer 202	1	80	washer ø6 x ø14 x 1.5	2
39	rear motor seat	1	81	handle	1
40	bolt m5x105	4	82	grip on handle	1
41	spring washer m5	4	83	handle bolt m6x30	2
42	fan	1	84	air filter	1

Please carefully read and save these instructions before attempting to assemble, maintain, install, or operate this product. Observe all safety information to protect yourself and others. Failure to observe the instructions may result in property damage and/or personal injury. Please keep instructions for future reference.

Important Operating Instructions



HVLP TOUCH UP SPRAY GUN

DO NOT RETURN TO STORE

Please call 800-348-5004 for parts and service

CALIFORNIA PROPOSITION 65

WARNING: You can create dust when you cut, sand, drill or grind materials such as wood, paint, metal, concrete, cement, or other masonry. This dust often contains chemicals known to cause cancer, birth defects, or other reproductive harm. Wear protective gear.

WARNING: This product or its power cord may contain chemicals, including lead, known to the State of California to cause cancer and birth defects or other reproductive harm. Wash hands after handling.

Important!

When using equipment, a few safety precautions must be observed to avoid injuries and damage. Please read the complete operating manual with due care. Keep this manual in a safe place, so that the information is available

at all times. If you give the equipment to any other person, give them these operating instructions as well. We accept no liability for damage or accidents which arise due to non-observance of these instructions and the safety information herein.

SPECIFICATIONS

Air Inlet: 1/4 inch NPT

Avg. Air Consumption: 9 CFM

Max Air Pressure: 45 PSI

FEATURES

- Adjustable fan size
- The durable caps are made of brass (not aluminum)
- Lightweight, durable die-cast alloy gun body
- For use with lacquer, enamel, stain, primer, and urethane
- Designed for all your small jobs and touch up needs

CAUTION:

FOR YOUR OWN SAFETY, READ INSTRUCTION MANUAL COMPLETELY AND CAREFULLY BEFORE OPERATING THIS HVLP TOUCH UP SPRAY GUN.

Any failures made in following the safety regulations and instructions may result in an electric shock, fire and/or serious injury.

SAFETY INSTRUCTIONS

Keep work area clean and well lit. Cluttered, dim work areas invite accidents.

Observe work area conditions. Do not use the tool in the presence of flames or flammable liquids, gases, or dust.

Keep children away. Do not let them handle machines, tools, extension cords, or air hoses.

Store idle equipment. When not in use, the tool should be stored in a safe, dry location out of the reach of children.

Use the right tool for the job. Do not attempt to force a tool or attachment to do a job that it was not intended to do.

For warranty purchases, please keep your dated proof of purchase. File or attach to the manual for safekeeping.

The tool will do the job better and safer at the rate at which it was intended.

Dress properly. Do not wear loose clothing or jewelry as they can be caught in moving parts. Protective, electrically non-conductive clothes and non-skid footwear are recommended when working. Contain long hair.

Do not overreach. Keep proper footing and balance at all times. Do not reach over or across running tools or air hoses.

Disconnect air hoses and release any built-up pressure. Never service or disassemble the air sander with the air hose attached. Always release any built-up air even after disconnecting the hose. Disconnect the air sander when not in use.

Avoid unintentional starting. Be sure the trigger is in the OFF position before connecting the air supply. Do not carry the tool with your finger on the trigger, whether it is attached to the air source or not.

Stay alert. Watch what you are doing and use common sense when operating this tool. Do not use this tool while tired or under the influence of drugs, alcohol, or medication. A moment of inattention while operating this tool increases the risk of injury.

Use clean, dry, regulated, compressed air at 90 PSI.

Never use oxygen, carbon dioxide, combustible gases, or any other bottled gas as a power source for this tool.

Check for damaged parts. Before using any tool, any part that appears damaged should be carefully checked to determine that it will operate properly and perform its intended function. Check for misalignment or binding of moving parts, breakage of parts, and any other condition that may affect the tool's operation. If damaged, have the tool serviced before using. Do not use the tool if the trigger does not operate properly.

Replacement parts and accessories. This product is to be serviced by a qualified technician. When servicing, use only identical replacement parts. Only use accessories intended for use with this tool. Use of any other parts will void the warranty.

Maintenance. For your safety, this product should be serviced or repaired regularly by a qualified technician.

Do not operate the spray gun near open flames, pilot lights, heaters, or any other heat source. Make sure you have adequate ventilation. Most solvents and paints are extremely flammable, especially when sprayed. Never smoke cigarettes in the same room you are working in.

Read labels on cleaning solvents and paint coatings.

Chlorinated solvents such as 111-Trichlorethane and Methylene Chloride (also known as methyl-chloride) can chemically react with aluminum and may explode. Many paint sprayers contain aluminum. Contact solvent manufacturer or paint supplier if you are in doubt.

Paints and solvents may be harmful or fatal if swallowed or inhaled. Always use a respirator when spraying. Avoid prolonged skin contact with solvents or paints as they will irritate skin. After contact, immediately wash off exposed area with hot, soapy water.

Check all spray gun seals and connections. Before use, make sure the lid is fully tightened on the cup, ensure that the screws and nuts are correctly tightened, and make sure the air hose is securely fastened and does not leak.

WARNING

Never point the paint gun at yourself or any other person or animal. Solvents and diluting agents can cause burns.

WARNING

The warnings, cautions, and instructions discussed in this instruction manual cannot possibly cover all conditions and situations that may occur. It must be understood by the operator that common sense and caution are factors that cannot be built into this product, but must be supplied by the operator.

OPERATING INSTRUCTIONS

OPERATION

WARNING

Check to see that all nuts and bolts are tight. Always disconnect the unit from the air supply before carrying out any repair work.

1. Mount the nozzle set tightly. Align the air nozzle so that the number stamped on it can be read from the right way round.

2. Blow out the air hose before attaching it to the air connection. (Air hose pressure-resistant up to a minimum 10 bar and solvent-resistant. Total electric resistance less than 100 million Ohm.)

3. The paint spray gun has been treated with an anticorrosive agent before leaving the factory and must therefore be flushed out thoroughly with thinner before use.

ADJUSTING THE AIR VOLUME

The air supply can be regulated to suit all operational conditions. When the air adjustment valve is in the vertical position (parallel to the gun body), you get maximum atomization. When the air adjustment valve is in the horizontal position (across gun body), you will achieve minimum atomization.

WARNING

During operation, never remove the fluid control valve.

REDUCING THE MATERIAL VOLUME

The volume of material flowing from the nozzle and thus the needle stroke can be reduced easily by screwing in the material-volume regulation screw.

CHANGING THE NOZZLE SET

Always change the complete nozzle set whenever changing the nozzle size. The components, which consists of the air cap, fluid nozzle, and paint needle, are supplied as a complete set. Insert the paint nozzle before the paint needle.

EXCHANGE THE AIR PISTON AND PISTON PACKING

To replace the air piston, remove the hollow screw and detach the air adjustment valve. Pull out the spring and air piston. Exchange the air piston. Unscrew the stuffing box screw and remove the old packing. Insert new packing with the flat end first, and gently tighten the stuffing box screw towards the packing.



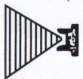
CLEANING AND MAINTENANCE

1. Flush the material-conveying parts of the gun thoroughly with thinner.

2. Clean the air nozzle with a paintbrush. Do not immerse the nozzle in thinner.

3. Under no circumstance try to clean the clogged openings using an unsuitable tool, since the slightest amount of damage adversely affects the spray pattern.

Troubleshooting Guide

Symptom	Possible Cause(s)	Corrective Action
Gun leaks from fluid tip	Foreign substances between fluid tip and needle preventing sealing	Clean the fluid needle and fluid nozzle with thinner or use a new set of nozzles.
Paint merges from fluid needle - needle sealing	Self tensioning needle sealing damaged or lost	Replace needle sealing
Spray pattern in sickle shape 	Horn air hose or air circuit clogged	Soak in thinner, then clean the nozzle and needle
Drop like or oval shaped pattern 	Dirt on fluid pin tip or air outlet	Turn air nozzle 180 degrees. If defective pattern remains, clean fluid tip pin and air circuit
Paint spray flutters 	Too little material in cup	Refill material
	Fluid nozzle not tight self-adjusting	Tighten parts
	Needle sealing damaged	Replace needle sealing
	Nozzle set dirty or damaged	Clean or replace, as needed
Material bubbles or "boils" in paint cup	Atomization air flows through the paint channel to the cup. The paint nozzle is not sufficiently tightened. Air nozzle is not completely screwed on. The air net is clogged and the seal is defective or the nozzle insert is damaged	Tighten parts accordingly, clean or replace

Limited Manufacturer Warranty

North American Tool Industries (NATI) makes every effort to ensure that this product meets high quality and durability standards. NATI warrants to the original retail consumer a 1-year limited warranty from the date the product was purchased at retail and each product is free from defects in materials. Warranty does not apply to defects due directly or indirectly to misuse, abuse, negligence, or accidents, repairs or alterations, or a lack of maintenance. NAT shall in no event be liable for death, injuries to persons or property, or for incidental, special, or consequential damages arising from the use of our products. To receive service under warranty, the original manufacturer part must be returned for examination by an authorized service center. Shipping and handling charges may apply. If a defect is found, NATI will either repair or replace the product at its discretion.

DO NOT RETURN TO STORE

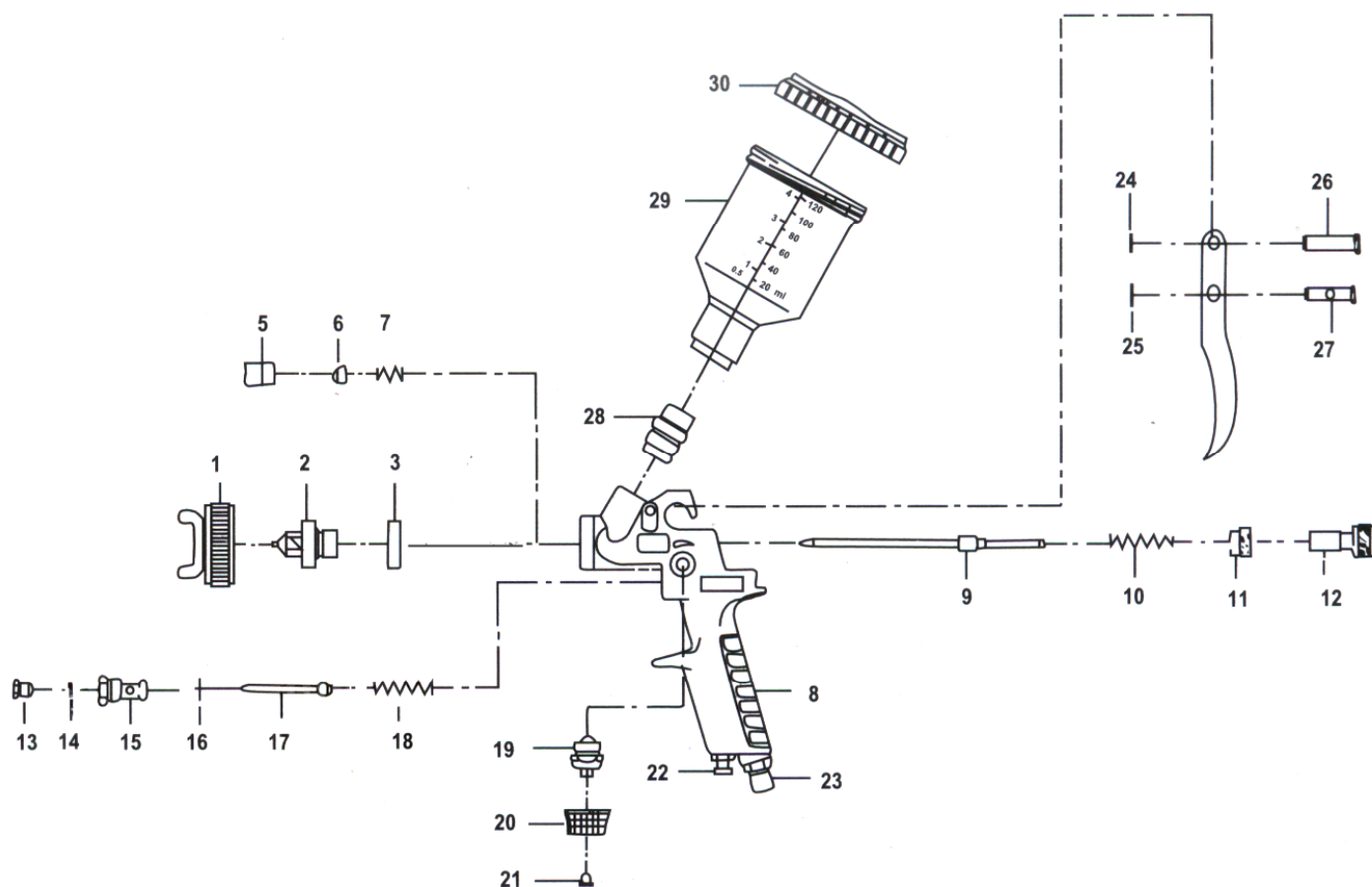
For Customer Service:

Email: feedback@natitools.com or Call 1-800-348-5004



HVLP TOUCH UP SPRAY GUN

Parts List



Call 1-800-348-5004 for assistance or replacement parts

Please provide the following information:

- Model number
- Part description and number as shown in parts list
- Serial number (if any)

Address any correspondence to:

North American Tool Industries
84 Commercial Rd
Huntington, IN 46750

No.	Description
1	Air Nozzle w/ Brass Cap
2	Fluid Nozzle
3	Piston Ring
5	Compression Screw
6	Sealing for Air Piston
7	Compression Spring for Needle Seal
8	Gun Body
9	Fluid Needle
10	Spring for Paint Needle
11	Screw Nut
12	Fluid Control Knob
13	Stuffing Box for Air Piston
14	Packing for Air Piston
15	Air Switch Valve
16	Piston Ring

No.	Description
17	Air Piston Complete
18	Spring for Air Piston
19	Spindle Complete
20	Control Knob
21	Counter Sunk Screw
22	Air Adjust Valve Assembly
23	Air Correction Piece R 1/4 inch
24	Locking Plate
25	Locking Plate
26	Bolt
27	Trigger Sleeve
28	Paint Connection
29	Plastic Cup
30	Cover

Please carefully read and save these instructions before attempting to assemble, maintain, install, or operate this product. Observe all safety information to protect yourself and others. Failure to observe the instructions may result in property damage and/or personal injury. Please keep instructions for future reference.

Important Operating Instructions



3/8 INCH AIR RATCHET WRENCH

CALIFORNIA PROPOSITION 65

WARNING: You can create dust when you cut, sand, drill or grind materials such as wood, paint, metal, concrete, cement, or other masonry. This dust often contains chemicals known to cause cancer, birth defects, or other reproductive harm. Wear protective gear.

WARNING: This product or its power cord may contain chemicals, including lead, known to the State of California to cause cancer and birth defects or other reproductive harm. Wash hands after handling.

Important!

When using equipment, a few safety precautions must be observed to avoid injuries and damage. Please read the complete operating manual with due care. Keep this manual in a safe place, so that the information is available at all times. If you give the equipment to any other person, give them these operating instructions as well. We accept no liability for damage or

accidents which arise due to non-observance of these instructions and the safety information herein.

SPECIFICATIONS

Free Speed: 150 RPM

Size: 3/8 inch

Working Pressure: 90 PSI

Air Consumption: 4 CFM @ 90 PSI

Maximum Torque: 50 ft/lb

Air Inlet: 1/4 inch

Recommended Hose Size: 3/8"
Square Driver: 3/8"

The air ratchet is a pneumatic portable tool. The expected use it to screw and unscrew nuts, bolts and threaded screws.

CAUTION: Read all safety regulations and instructions

Any failures made in following the safety regulations and instructions may result in an electric shock, fire and/or serious injury.

Keep all safety regulations and instructions in a safe place for future use.

SAFETY INSTRUCTIONS

- 1) Keep work area clean and well lit.
- 2) Use caution when operating this tool.
- 3) Stay alert while operating the tool. Do not use while under the influence of drugs or alcohol.
- 4) Do not use the tool in wet or explosive environments, especially near flame, flammable materials or surfaces.
- 5) Check the tool carefully before each use. Do not use if problems are found.
- 6) Dress properly. Do not wear loose clothing or jewelry. Keep long hair pulled back.
- 7) Do not overreach when using this tool. Keep proper footing and balance at all times.
- 8) Use safety equipment. Wear eye protection, dust mask, safety shoes, hardhat and/or hearing protection in appropriate situations.

For warranty purchases, please keep your dated proof of purchase. File or attach to the manual for safekeeping.

9) Use clamps or other practical way to secure and support the piece a stable platform. Holding the work piece against your body or by hand is unstable and may lead to a loss of control.

10) Do not force the tool; use the correct tool for the application. The correct tool will allow the job to be completed in a better and safer way.

11) Disconnect the tool from the air compressor before making any adjustments, changing the accessories or storing the tool.

12) Maintain tools with care. Check for misalignment or binding of moving parts and for any other condition that may affect the tool's operation.

13) Some accessories suitable for one tool may not be suitable for use on another. Check to make sure that all accessories to be used are suitable.

14) Tool service may only be performed by qualified repair personnel.

15) Never touch the moving parts of the air tool.

16) Do not attempt to use the tool dismantled.

17) Do not attempt to modify or tamper with the tool.

18) Do not touch electrically live parts with the tool.

USE

1) Remove the top that is covering the air intake valve and screw the nozzle into the clutch.

2) Put a few drops of lubricant oil (make sure it is without resin acid) in the air intake valve.

3) Check for damage to the air supply tube. If it is damaged, broken or deformed, do not connect it to the tool and use it.

4) Make sure the working pressure does not exceed 90 PSI. Pressures higher than 90 PSI can cause excessive damage and wear to the tool.

5) When connecting the air supply tube to the tool, do not push the lever.

CONNECTING TOOLS

1) Disconnect the air tube before connecting or disconnecting the accessories.

2) Choose the head that matches the shape and size needed.

3) Push the head onto the square drive.

4) To remove the head, pull it with force.

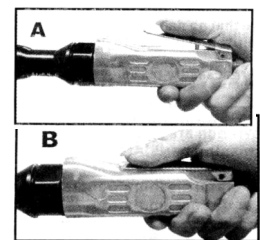
TURNING TOOL ON/OFF

1) After the sleeve and flexible tube are connected hold the air ratchet by the gun grip.

2) Push frontward with the thumb to release the safety lock and then push the lever to start the tool rotation.

3) The start lever is a hold-to-run control. When pressure is released, the tool stops rotating.

4) To turn off the ratchet, release the start lever.



Maintenance

1) Make sure to disconnect the tool from the air line before any cleaning or maintenance is performed.

2) A general cleaning is necessary to remove dregs, dust or dirt accumulation on the tool.

3) Do not use organic solvents because they may cause corrosion and fading. Never use paint thinner, gasoline or a similar substance to clean the nozzle.

4) Lubricate all rotating parts of the tool by inserting oil through the nozzle. Make sure the tool is disconnected from the air tube, put the tool in a vertical position with the nozzle upwards and place a few drops of oil in the nozzle. Be sure to use suitable air tool oil.

Storage

Avoid storing the tool in locations with high humidity because it may cause the tool to rust on the inside. Before storing for long periods of time, oil the tool at the air inlet and allow it to run for a few seconds.

Disposal

When the tool is seriously damaged or no longer functioning, recycle it according to local laws and regulations.

Replacement Parts

Contact North American Tool Industries (NATI) directly for all replacement parts and service needs. When ordering, be sure to have the spare part number and tool model #.

Limited Manufacturer Warranty

North American Tool Industries (NATI) makes every effort to ensure that this product meets high quality and durability standards. NATI warrants to the original retail consumer a 1-year limited warranty from the date the product was purchased at retail and each product is free from defects in materials. Warranty does not apply to defects due directly or indirectly to misuse, abuse, negligence, or accidents, repairs or alterations, or a lack of maintenance. NAT shall in no event be liable for death, injuries to persons or property, or for incidental, special, or consequential damages arising from the use of our products. To receive service under warranty, the original manufacturer part must be returned for examination by an authorized service center. Shipping and handling charges may apply. If a defect is found, NATI will either repair or replace the product at its discretion.

DO NOT RETURN TO STORE

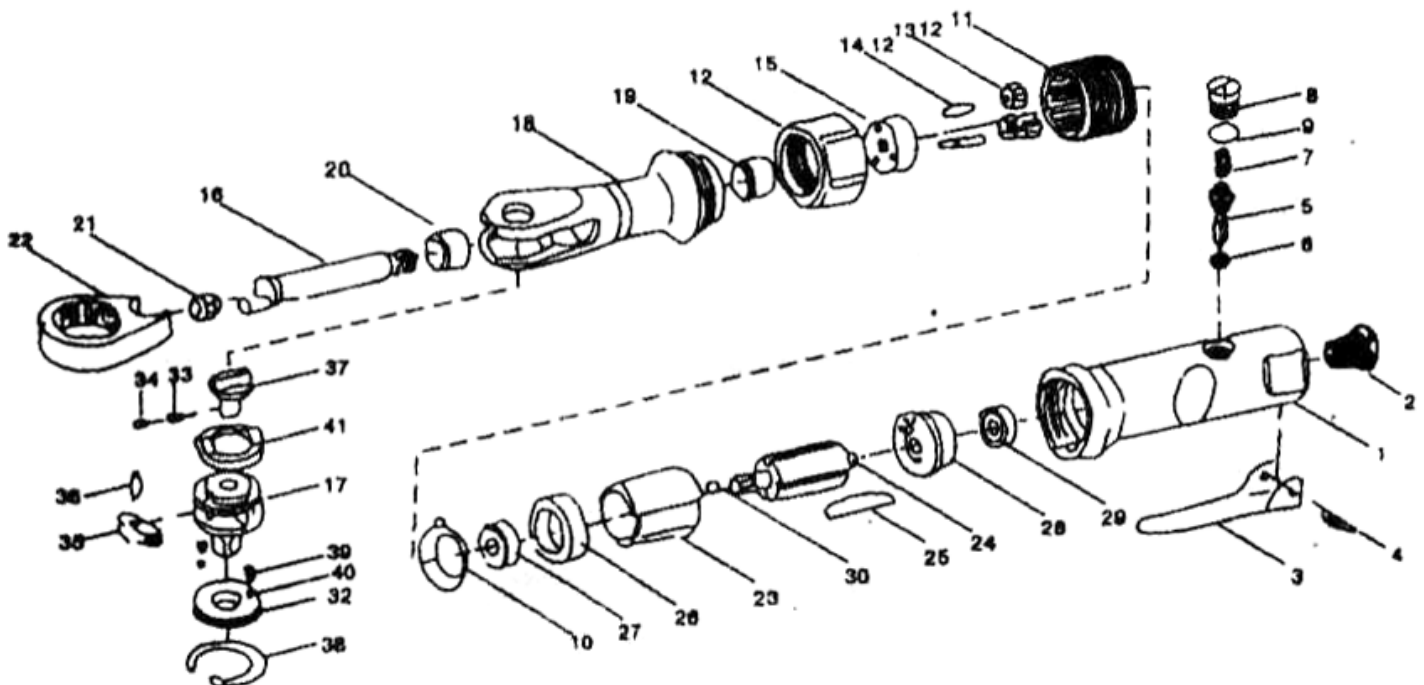
For Customer Service:

Email: feedback@natitools.com or Call 1-800-348-5004



3/8 INCH AIR RATCHET WRENCH

Parts List



Call 1-800-348-5004 for assistance or replacement parts

Please provide the following information:

- Model number
- Part description and number as shown in parts list
- Serial number (if any)

Address any correspondence to:

North American Tool Industries
84 Commercial Rd
Huntington, IN 46750

No.	Description	Quantity
1	Housing	1
2	Connection Head	1
3	Trigger	1
4	Roll Pin	1
5	Valve	1
6	O-Ring	1
7	Spring	1
8	Valve Plug	1
9	O-Ring	1
10	Washer	1
11	Thread Ring Gear	1
12	Clamp Nut	1
13	Idler Gear	3
14	Idler Gear Pin	3
15	Idler Gear Plate	1
16	Crank Shaft	1
17	Ratchet Anvil	1
18	Ratchet Housing	1
19	Bushing	1
20	Bushing	1
21	Drive Bushing	1

No.	Description	Quantity
22	Ratchet Yoke	1
23	Cylinder	1
24	Rotor	1
25	Rotor Blade	1
26	Front Plate	1
27	Front Bearing	1
28	Real Plate	1
29	Real Bearing	1
30	Cylinder Pin	1
31	Thrust Washer (3/8in.)	1
32	Thrust Washer (1/2in.)	1
33	Spring	1
34	Lock Pin	1
35	Ratchet Pawl	1
36	Pin	1
37	Reverse Button	1
38	Retainer Ring	1
39	Spring	1
40	Steel Ball	1
41	Washer	1

Please carefully read and save these instructions before attempting to assemble, maintain, install, or operate this product. Observe all safety information to protect yourself and others. Failure to observe the instructions may result in property damage and/or personal injury. Please keep instructions for future reference.

Important Operating Instructions



1/2 INCH AIR IMPACT WRENCH

CALIFORNIA PROPOSITION 65

WARNING: You can create dust when you cut, sand, drill or grind materials such as wood, paint, metal, concrete, cement, or other masonry. This dust often contains chemicals known to cause cancer, birth defects, or other reproductive harm. Wear protective gear.

WARNING: This product or its power cord may contain chemicals, including lead, known to the State of California to cause cancer and birth defects or other reproductive harm. Wash hands after handling.

Important!

When using equipment, a few safety precautions must be observed to avoid injuries and damage. Please read the complete operating manual with due care. Keep this manual in a safe place, so that the information is available at all times. If you give the equipment to any other person, give them these operating instructions as well. We accept no liability for damage or

accidents which arise due to non-observance of these instructions and the safety information herein.

SPECIFICATIONS

Free Speed: 7,000 RPM

Air Consumption: 4 cubic feet

Maximum Torque: 230 ft/lb

Air Inlet: 1/4 inch

Clutch Type: Rocking dog

This air impact wrench is a pneumatic portable tool used to screw and unscrew nuts, bolts, and threaded screws by changing the high impact sockets.

CAUTION: Read all safety regulations and instructions

Any failures made in following the safety instructions may result in an electric shock, fire, and/or serious injury.

Keep all safety instructions and guidelines in a safe place for future use.

SAFETY INSTRUCTIONS

- 1) Keep the work area clean and well lit.
- 2) Use caution while operating this tool.
- 3) Stay alert while operating the tool. Do not use it while under the influence of drugs or alcohol.
- 4) Do not use the tool in wet or explosive environments, especially near flame, flammable materials, or surfaces.
- 5) Only use compressed air to run this tool. Do not use any other air sources.
- 6) Check the tool carefully before each use. Do not use if problems are found.
- 7) Dress properly. Do not wear loose clothing or jewelry. Keep long hair pulled back.
- 8) Do not overreach when

For warranty purchases, please keep your dated proof of purchase. File or attach to the manual for safekeeping.

using this tool. Keep proper footing and balance at all times.

9) Use safety equipment. Always wear eye protection, dust mask, safety shoes, hardhat, and/or hearing protection in appropriate situations.

10) Use clamps or other practical ways to secure and support the piece to a stable platform. Holding the work piece against your body or by hand is unstable and may cause loss of control.

11) Do not force the tool. Use the correct tool for the application. The correct tool will allow the job to be completed in a better and safer way.

12) Disconnect the tool from the air compressor before making any adjustments, changing the accessories, or storing the tool.

13) Do not change sockets with the air line connected or with the trigger depressed.

14) Carry the tool by the handle. Do not carry by the air hose or with the trigger depressed because it could cause the tool to start.

15) Maintain tools with care. Check for misalignment or binding of moving parts and for any other condition that may affect the tool's operation.

16) Do not attempt to use the tool when unplugged from the air source.

17) Do not attempt to modify or tamper with the tool.

SET UP

1) Remove the cap from the air intake valve and screw in the 1/4 inch nozzle.

2) Place a few drops of lubricant oil inside the air intake valve.

3) Check for damages to the air hose. If it is damaged or worn, do not use it.

USE

Caution: Do not exceed 90 PSI. Exceeding this amount can cause damage and excessive wear of the tool.

Disconnect the air hose before connecting or disconnecting the high impact socket.

DO NOT use sockets other than high impact sockets.

1) Choose the appropriate size and socket.

2) Push the socket hole onto the square driver. If an extension is needed, insert it between the square driver and the socket.

3) Connect the air supply line to the impact wrench.

4) To change the direction of the rotation, push the pin towards the F to screw clockwise (in) and R to screw counter-clockwise (unscrew).

5) To change the rotation speed, turn the knob at the base of the tool handle. 1 is the minimum speed and 4 is the maximum.

6) Press the trigger to start the impact wrench. It will turn off when the trigger is released.

7) Unplug the air supply line when finished with the impact wrench.

MAINTENANCE

Make sure to disconnect the tool from the air supply line before any cleaning or maintenance is performed.

Place a few drops of lubricating oil into the air supply area at the base of the handle before operation. Also be sure to clean the wrench after operation.

A general cleaning is necessary to remove dregs, dust, or dirt accumulation on the tool.

Do not use solvents because they may cause corrosion and fading. Never use paint thinner, gasoline or a similar substance to clean the nozzle.

Lubricate all rotating parts of the tool by daily inserting a few drops of lubricating oil through the air hose fitting. Make sure the air hose is disconnected, put the tool in a vertical position with the fitting facing upwards and then place a few drops inside fitting.

STORAGE

Disconnect the wrench from the air source before storing.

Avoid storing the tool in locations with high humidity because it may cause the tool to rust on the inside. Before storing for long periods of time, oil the tool at the air inlet and allow it to run for a few seconds.

DISPOSAL

When the tool is seriously damaged or no longer functioning, recycle it according to local laws and regulations.

REPLACEMENT PARTS

Contact North American Tool Industries (NATI) directly for all replacement parts and service needs. When ordering, be sure to have the spare part number and tool model number.

Limited Manufacturer Warranty

North American Tool Industries (NATI) makes every effort to ensure that this product meets high quality and durability standards. NATI warrants to the original retail consumer a 1-year limited warranty from the date the product was purchased at retail and each product is free from defects in materials. Warranty does not apply to defects due directly or indirectly to misuse, abuse, negligence, or accidents, repairs or alterations, or a lack of maintenance. NAT shall in no event be liable for death, injuries to persons or property, or for incidental, special, or consequential damages arising from the use of our products. To receive service under warranty, the original manufacturer part must be returned for examination by an authorized service center. Shipping and handling charges may apply. If a defect is found, NATI will either repair or replace the product at its discretion.

DO NOT RETURN TO STORE

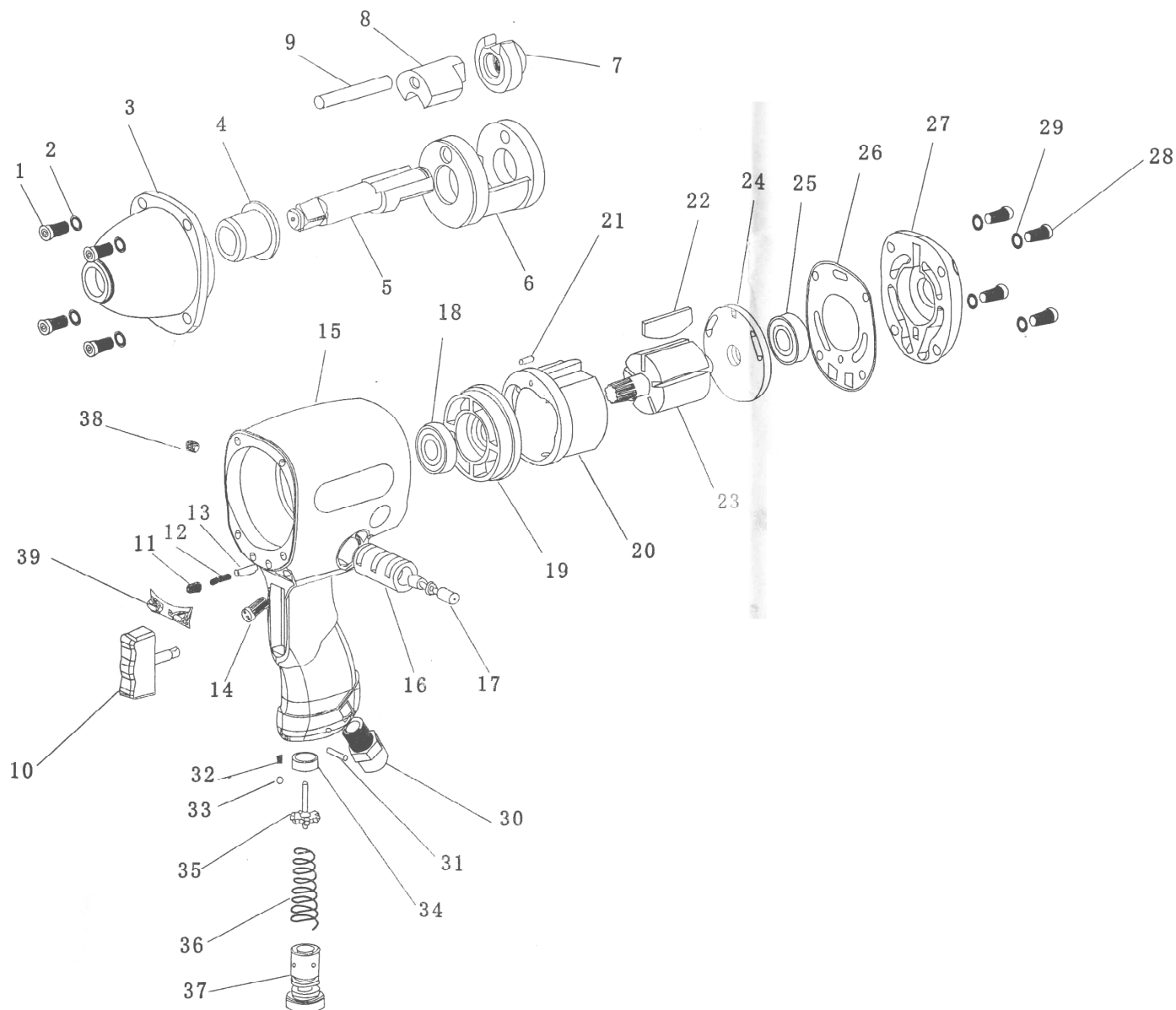
For Customer Service:

Email: feedback@natitools.com or Call 1-800-348-5004



1/2 Inch Air Impact Wrench

Parts List



Call 1-800-348-5004 for assistance or replacement parts

Please provide the following information:

- Model number
- Part description and number as shown in parts list
- Serial number (if any)

Address any correspondence to:

North American Tool Industries
84 Commercial Rd
Huntington, IN 46750

No.	Description	Quantity
1	Cap Screw	4
2	Spring Washer	4
3	Protecting Rubber	1
4	Anvil Collar	1
5	Anvil	1
6	Hammer Cage	1
7	Drive Cam	1
8	Hammer Dog	1
9	Hammer Pin	1
10	Trigger	1
11	Oiling Screw	1
12	Spring	2
13	Pin	1
14	Cap Screw	1
15	Motor Housing	1
16	Valve Sleeve	1
17	Reverse Valve	1
18	Ball Bearing	1
19	Front End Plate	1
20	Cylinder	1

No.	Description	Quantity
21	Spring Pin	1
22	Rotor Blade	1
23	Rotor	1
24	Rear End Plate	1
25	Ball Bearing	1
26	Rear Gasket	1
27	Rear Cover	1
28	Cap Screw	4
29	Spring Washer	4
30	Air Inlet Bushing	1
31	Pin	1
32	Spring	1
33	Steel Ball	1
34	Throttle Bushing	1
35	Valve Stem	1
36	Spring	1
37	Air Regulator	1
38	Oiling Screw	1
39	Exhaust Collector	1