

## OWNER'S MANUAL

# LG CLOUD V SERIES MONITOR (LED MONITOR)

Please read the safety information carefully before using the product.

LG Cloud V Series Monitor (LED Monitor) Model  
19CNV42K

# TABLE OF CONTENTS

## 3 ASSEMBLING AND PREPARING

---

- 3 Unpacking
- 4 Parts and buttons
- 5 Lifting and moving the Monitor
- 5 Setting Up the Monitor set
  - 5 - Attaching the Stand Base
  - 6 - Mounting on a table
  - 6 - Adjusting the angle
  - 7 - Adjusting the stand height
  - 7 - Using the Kensington locking device
  - 8 - Detaching the stand base
  - 8 - Detaching the stand body
  - 9 - Swivel stand
  - 9 - Using the Pivot function
  - 10 - Installing the wall mount plate
  - 10 - Mounting on a wall

## 12 USING THE MONITOR SET

---

- 12 Connecting Input Signal Cable
  - 12 - D-SUB IN connection - PC
  - 13 - DVI connection
- 14 Connecting LAN/Peripherals
  - 14 - LAN connection
  - 15 - Peripheral device connection
  - 16 - Self Image Adjustment

## 17 CUSTOMIZING SETTINGS

---

- 18 Customizing Settings
  - 18 - Menu Settings
  - 19 - PICTURE
  - 20 - COLOR
  - 21 - DISPLAY
  - 22 - OTHERS
  - 23 - VOLUME

## 24 TROUBLESHOOTING

---

## 26 PRODUCT SPECIFICATION

---

- 27 Preset Mode
- 27 Power Indicator

## 28 PROPER POSTURE

---

- 28 Proper posture for using the monitor

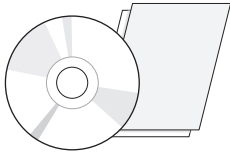
## 29 USING CLOUD SOLUTION

---

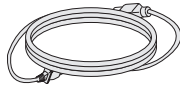
# ASSEMBLING AND PREPARING

## Unpacking

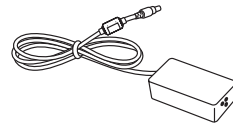
Please check whether all the components are included in the box before using the product. If there are missing components, contact the retail store where you purchased the product. Note that the product and components may look different from those shown here.



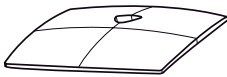
**User Manual/Card**



**Power Cord**



**Adaptor**



**Stand Base**



**15-pin D-SUB Signal Cable**  
(This cable is not included in all counties)



### CAUTION

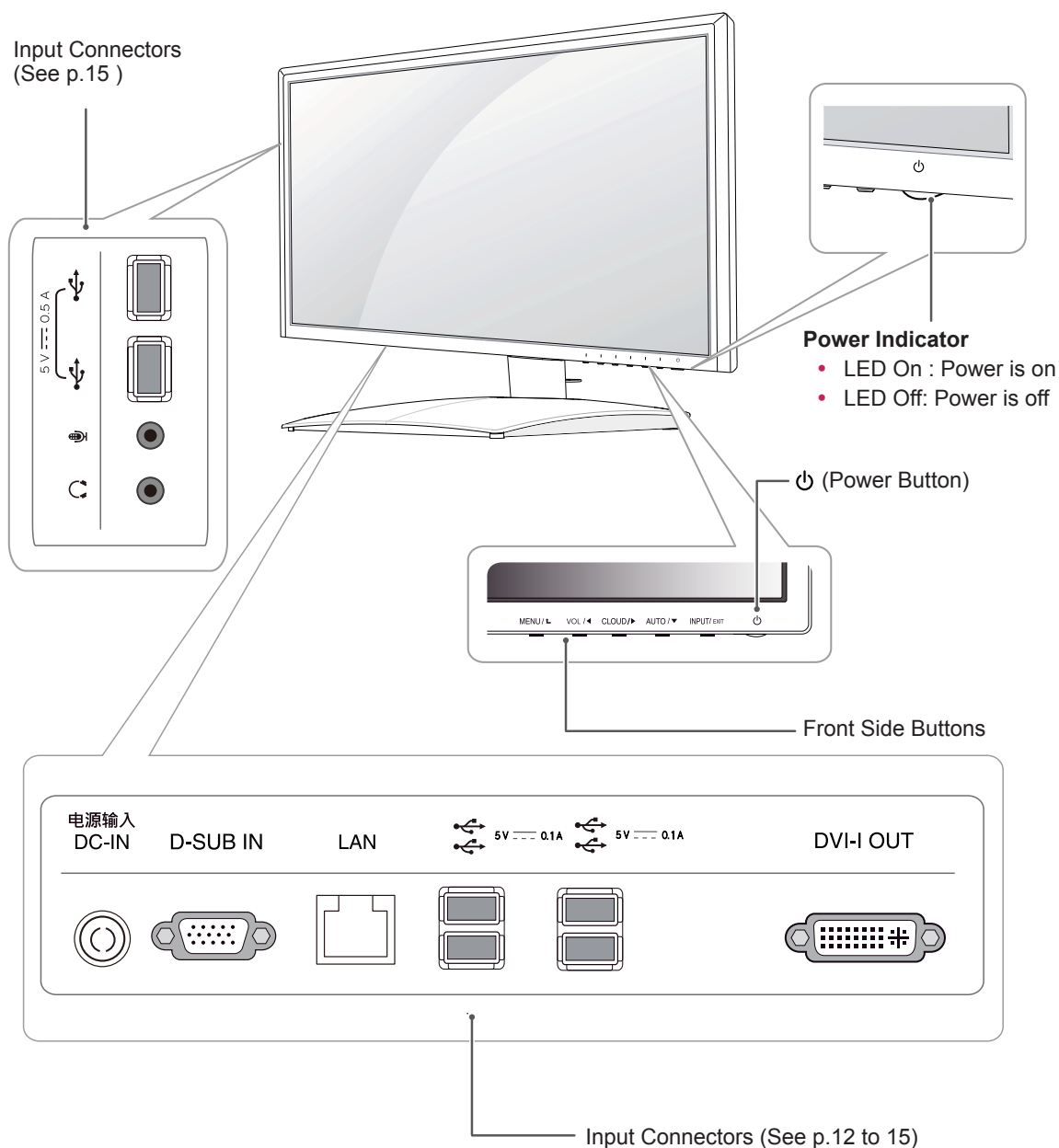
- Only use an approved LG power adapter.
- Damage caused by other power adapters is not covered by warranty.



### NOTE

- Note that the components may look different from those shown here.
- Without prior notice, all information and specifications in this manual are subject to change to improve the performance of the product.
- To purchase optional accessories, visit an electronics store or online shopping site or contact the retail store where you purchased the product.

## Parts and buttons





## Lifting and moving the Monitor

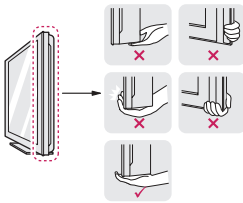
Please heed the following information when moving the monitor.



### CAUTION

- Avoid touching the screen at all times, as this may result in damage to the screen or pixels.

- It is recommended to move the Monitor in the box or packing material that the Monitor originally came in.
- Before moving or lifting the Monitor, disconnect the power cord and all cables.
- Hold the top and bottom of the Monitor frame firmly. Make sure not to hold the transparent part area.



- When holding the Monitor, the screen should face away from you to prevent the screen from scratches.



- When transporting the Monitor, do not expose the Monitor to jolts or excessive vibration.
- When transporting the Monitor, keep the Monitor upright, never turn the Monitor on its side, or tilt towards the left or right.

## Setting Up the Monitor set

### Attaching the Stand Base

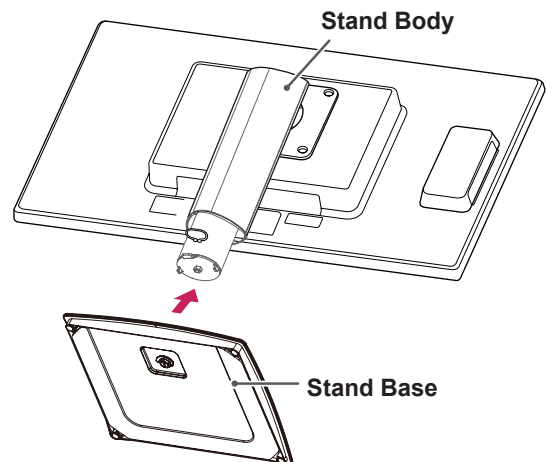
- 1 Place the monitor's screen face down.



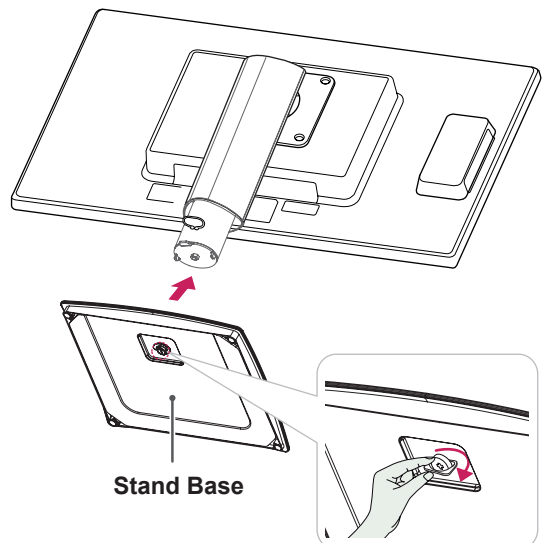
### CAUTION

- To protect the screen from scratches, cover the surface with a soft cloth.

- 2 Check the **position (at the front and rear)** of the stand body, then mount the **stand base** on the **stand body** as shown in the figure.

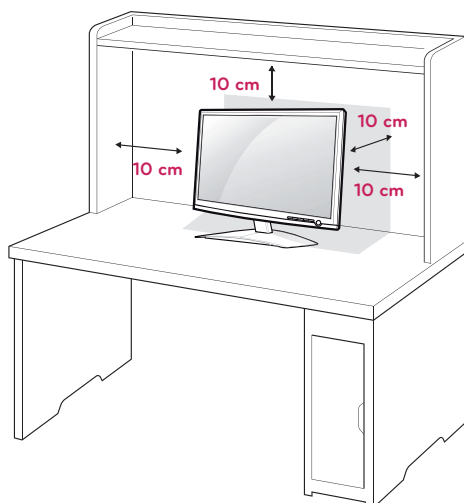


- 3 Using a coin, turn the screw clockwise to secure the **stand base**.

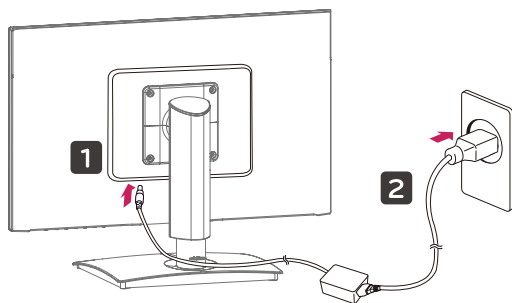


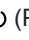
## Mounting on a table

- 1 Lift the monitor and place it on the table in an upright position.  
Install at least **10 cm** away from the wall to ensure sufficient ventilation.



- 2 Connect the adaptor to the monitor, then plug the power cord into the wall outlet.



- 3 Press the  (Power) button on the front of the monitor to turn on the monitor.

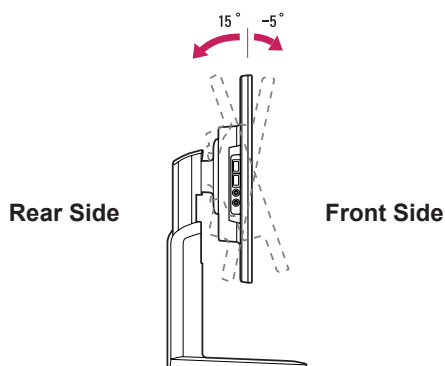


### CAUTION

- Unplug the power cord prior to moving or installing the monitor. There is risk of electric shock.

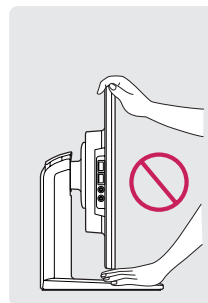
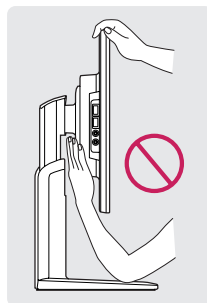
## Adjusting the angle

- 1 Place the monitor mounted on the stand base in an upright position.
- 2 Adjust the angle of the screen. The angle of the screen can be adjusted up to 5° forwards and 15° backwards for a comfortable viewing experience.

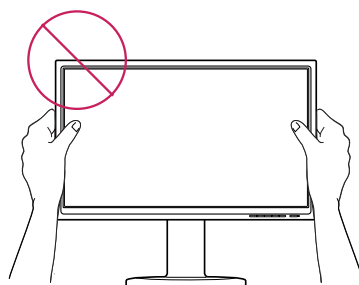


### WARNING

- To avoid injury to the fingers when adjusting the screen, do not hold the lower part of the monitor's frame as illustrated below.



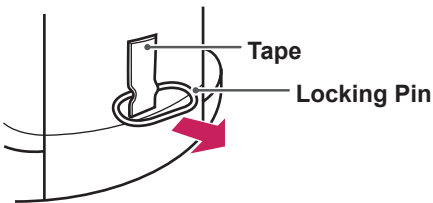
- Be careful not to touch or press the screen area when adjusting the angle of the monitor.



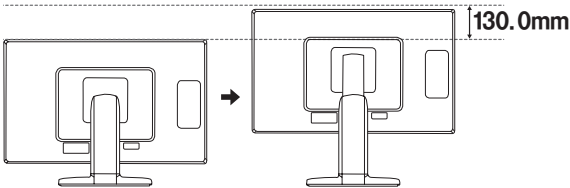
## Adjusting the stand height

- 1 Place the monitor mounted on the stand base in an upright position.
- 2 Remove the **tape** attached at the bottom rear of the **stand body**, then pull out the **locking pin**.

Stand Body



- 3 The height can be adjusted up to **130 mm**.

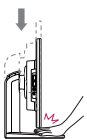


### CAUTION

- Once the pin is removed, it is not necessary to re-insert it to adjust the height.



### WARNING



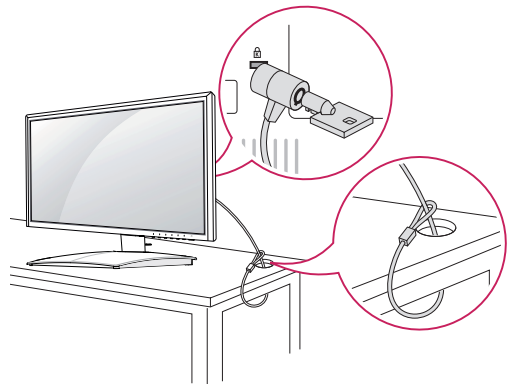
- Do not put your finger between the screen and the base (chassis) when adjusting the screen's height.

## Using the Kensington locking device

The connector for the Kensington lock is located on the rear of the monitor.

For more information on installation and usage, refer to the Kensington lock user manual or visit the website at <http://www.kensington.com>.

Connect the monitor to the table with the Kensington lock cable.

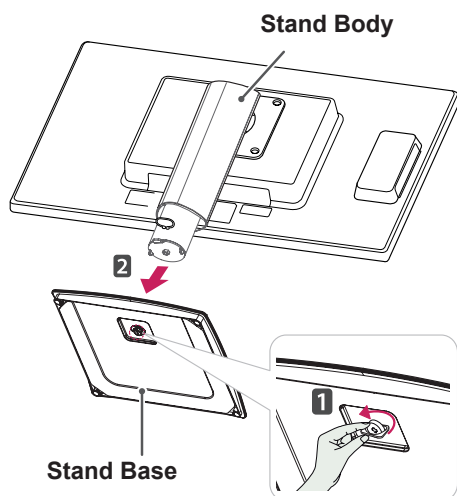


### NOTE

- Using the Kensington lock is optional. The accessories can be purchased at your local electronics store.

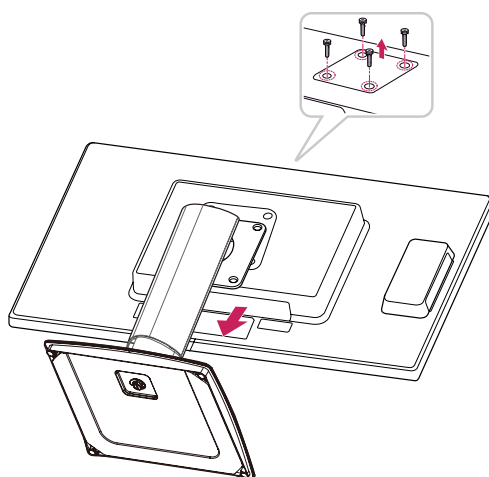
## Detaching the stand base

- 1 Place the monitor's screen face down.  
To protect the screen from scratches, cover the surface with a soft cloth.
- 2 Using a coin, turn the screw in the stand base counterclockwise. Detach the **stand base** from the **stand body**.



## Detaching the stand body

- 1 Place the monitor's screen face down. To protect the screen from scratches, cover the surface with a soft cloth.
- 2 Using a screwdriver, remove the four screws and detach the stand from the monitor.

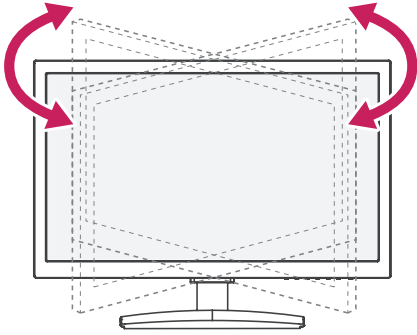


### CAUTION

- The components appearing in the illustrations may look different from the actual product.
- Do not carry the monitor upside-down as this may cause it to fall off its stand, resulting in damage or injury.
- To avoid damaging the screen when lifting or moving the monitor, only hold the stand or the plastic cover. This avoids putting unnecessary pressure on the screen.
- Only remove the tape and the locking pin when the monitor is mounted on the stand base and is in an upright position. Otherwise, the stand body may protrude, which may lead to injury.

## Swivel stand

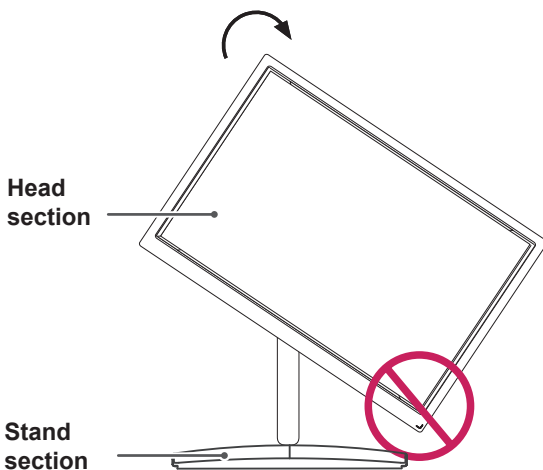
- Image shown may differ from your Monitor set.
- Swivel 90 degrees and adjust the angle of the Monitor set to suit your view.



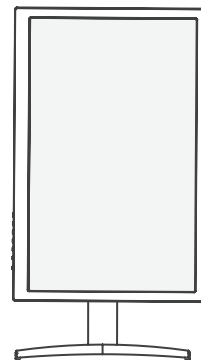
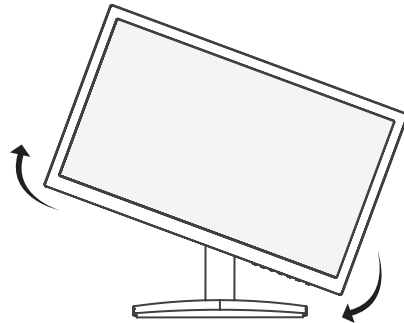
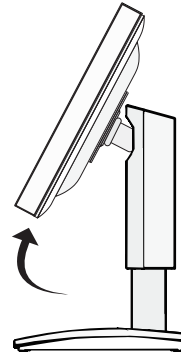
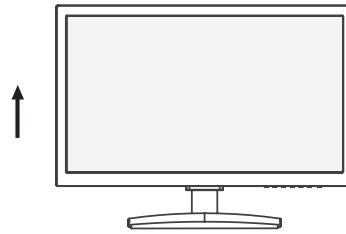
## Using the Pivot function

The pivot function allows you to rotate the screen 90 degrees clockwise.

- Lift the monitor to its highest height to utilize the Pivot function.
- Landscape & Portrait : You can rotate the panel 90° clockwise. Please be cautious and avoid contact between the monitor head and the Stand Base when rotating the screen to access the Pivot function. If the monitor head touches the Stand Base, then the Stand Base could crack.



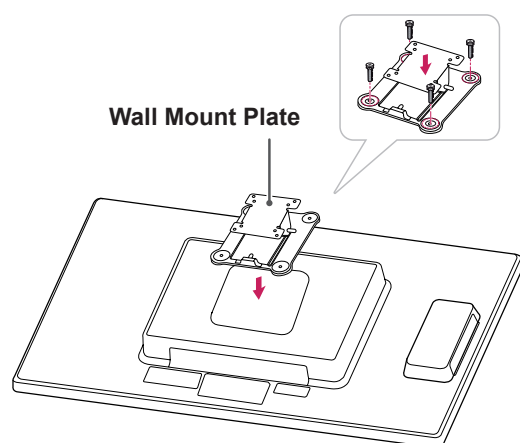
- Be careful with the cables when rotating the screen.



## Installing the wall mount plate

This monitor has a VESA compatible mount on the back. Most mounts will require an LG mounting plate.

- 1 Place the monitor's screen face down. To protect the screen from scratches, cover the surface with a soft cloth.
- 2 Place the wall mount plate on the monitor and align it with the screw holes on the monitor.
- 3 Using a screwdriver, tighten the four screws to fix the plate onto the monitor.

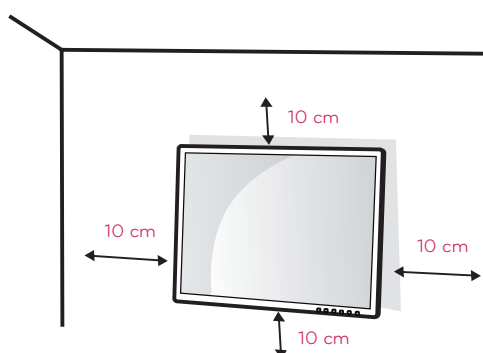


### ! NOTE

- The wall mount plate is sold separately.
- For more information on the installation, refer to the wall mount plate's installation guide.

## Mounting on a wall

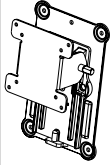
Install the monitor at least 10 cm away from the wall and leave about 10 cm of space at each side of the monitor to ensure sufficient ventilation. Detailed installation instructions can be obtained from your local retail store. Please refer to the manual to install and set up a tilting wall mounting bracket.



If you intend to mount the Monitor set to a wall, attach Wall mounting interface (optional parts) to the back of the set.

When you install the Monitor set using a wall mounting interface (optional parts), attach it carefully so it will not drop.

- 1 Please, Use the screw and wall mount interface in accordance with VESA Standards.
- 2 If you use screw longer than standard, the monitor might be damaged internally.
- 3 If you use improper screw, the product might be damaged and drop from mounted position. In this case, LG Electronics is not responsible for it.
- 4 VESA compatible.
- 5 Please use VESA standard as below.
  - 784.8 mm (30.9 inch) and under
    - \* Wall Mount Pad Thickness : 2.6 mm
    - \* Screw :  $\Phi$  4.0 mm x Pitch 0.7 mm x Length 10 mm
  - 787.4 mm (31.0 inch) and above
    - \* Please use VESA standard wall mount pad and screws.

<b>Model</b>	19CNV42K
<b>VESA (A x B)</b>	100 x 100
<b>Stand Screw</b>	M4
<b>Required Screw</b>	4
<b>Wall Mount Plate (Optional)</b>	RW120 

**CAUTION**

- Unplug the power cord before moving or installing the monitor to avoid electric shocks.
- Installing the monitor on the ceiling or on a slanted wall may result in the monitor falling off, which could lead to injury. Please use a LG wall mounting bracket when using a VESA mount. For more information, contact your local retail store or a qualified installer.
- Applying excessive force when fastening screws may cause damage to the monitor. Damage caused in this way will not be covered by the product warranty.
- Use the wall mounting bracket and screws that conform to the VESA standard. Damage caused by the use or misuse of inappropriate components will not be covered by the product warranty.

**NOTE**

- Use the screws specified in the VESA standard.
- The wall mount kit includes the installation guide and necessary parts.
- The wall mounting bracket is optional. The accessories can be purchased at your local retail store.
- The length of the screw may differ for each wall mounting bracket. Ensure the correct length of the screw is used.
- For more information, please refer to the user manual for the wall mounting bracket.

# USING THE MONITOR SET

## Connecting Input Signal Cable

- This monitor supports the \*Plug and Play feature.  
\*Plug and Play: A feature that allows you to add a device to your computer, without having to reconfigure anything or install any manual drivers.

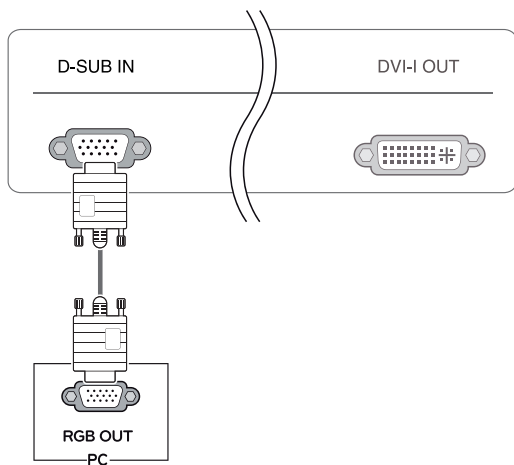
### ! NOTE

- **Apple Adapter**  
An adapter may be needed for Apple computers. This adapter can be purchased from Apple.

## D-SUB IN connection - PC

D-SUB IN transfers analog video signals from the PC to the monitor.

Connect the monitor to the PC using the provided 15-pin D-SUB signal cable as illustrated below.

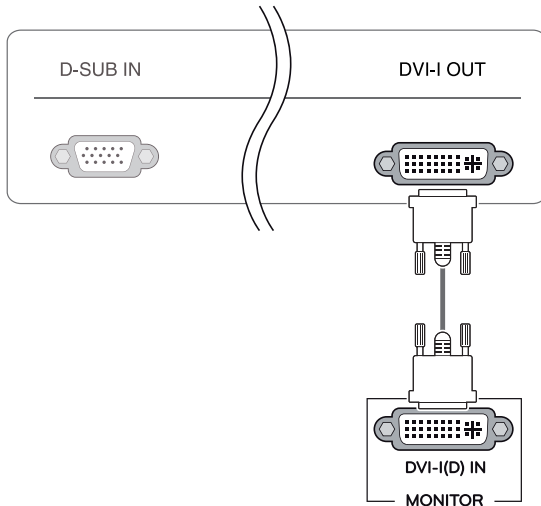




## DVI connection

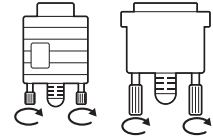
Transfers digital video signals from the Cloud Monitor to an extended monitor.

Connect the Cloud Monitor to an extended monitor using a DVI cable.



### CAUTION

- Connect the input signal cable and tighten in the direction of the arrow. To prevent disconnection secure the cable tightly.
- Do not press on the screen for a prolonged time. This may cause image distortion.
- Do not display a still image on the screen for a prolonged time. This may cause image retention. If possible, use the screen saver.



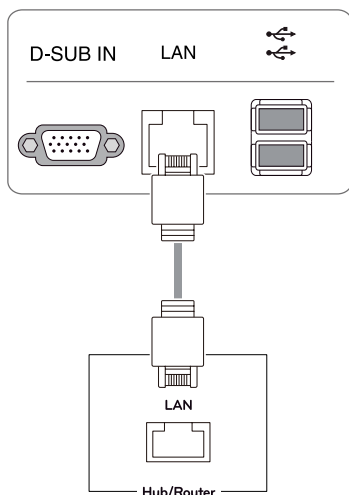
### NOTE

- To connect the monitor to a computer, use the appropriate signal cable (LAN and D-SUB).
- A converter can be used to convert the DVI-I input signal to D-SUB input signal.
- When connecting the power cord to the outlet, use a grounded (3-hole) multi-socket or a grounded wall outlet.
- The monitor may flicker when turned on in an area of low temperature. This is normal.
- Sometimes red, green or blue spots may appear on the screen. This is normal.

## Connecting LAN/Peripherals

### LAN connection

Connect the router or switch to the monitor using a LAN cable as illustrated below.

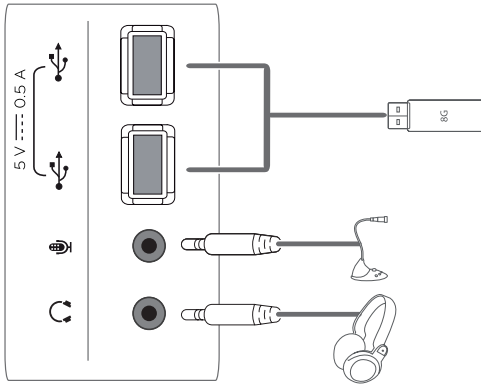


### ! NOTE

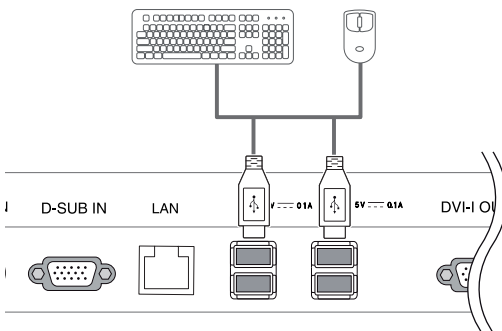
- The LAN cable is sold separately.
- The following LAN cable type can be used:  
Standard: IEEE 802.3 ETHERNET
- If a device is connected into the earphone out port via a LAN cable, you can adjust the volume with the volume icon on PC taskbar.
- Connect the LAN cable and the peripheral devices prior to booting up the PC.

## Peripheral device connection

Connect peripheral devices to the monitor using USB, microphone and headphone ports.



Left



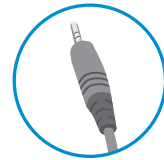
Bottom

### ! NOTE

- Peripheral devices are sold separately.
- The USB ports on the left and bottom of the monitor can be used to connect the keyboard, mouse, and other USB devices.
- Cables with angled plugs may have clearance issues, use straight plugs when possible.



Angle Type



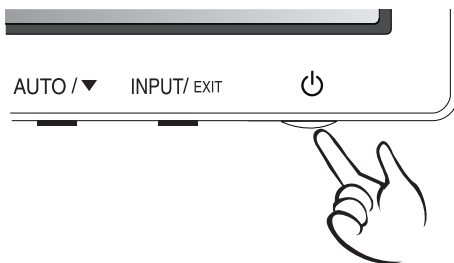
Straight Type

### ! NOTE

- Headphones, speakers or microphone may not work normally, depending on the server PC settings.
- Virtual solutions may affect the functions or speed of the specific USB storage device.

## Self Image Adjustment

Press the power button on the front to turn on the monitor. When powered on, the **"Self Image Adjustment"** function will run automatically (only available for analog [D-SUB input] signals).

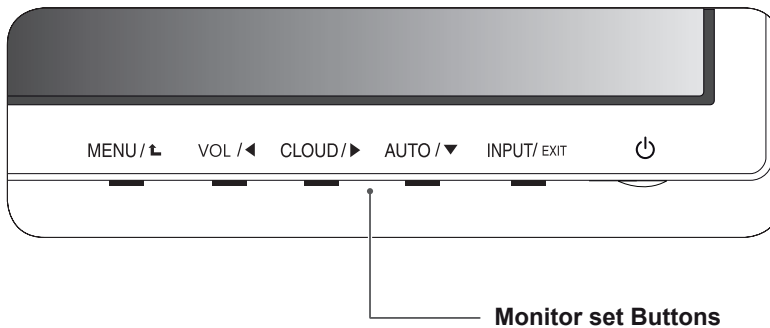


### NOTE

- What is "Self Image Adjustment"? This function runs when the monitor is connected for the first time and performs automatic image adjustment for each signal (only available for analog [D-SUB input] signals) to provide an optimal screen display.

# CUSTOMIZING SETTINGS

- 1 Press the desired button on the bottom of the Monitor set.
- 2 Change the value of the menu item by pressing the buttons on the bottom of the Monitor set.  
To return to the upper menu or set other menu items, use the up arrow (↑) button.
- 3 Select **EXIT** to leave the OSD menu.

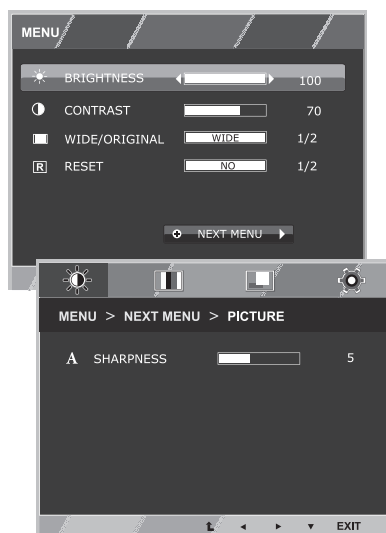


Button	Description	
MENU	Activates the main menu.	
	<b>OSD Lock/Unlock Functions</b>	Locks/unlocks the OSD screen. <ul style="list-style-type: none"> <li>To lock the OSD screen, press and hold the MENU button for several seconds. The "OSD LOCKED" message will be displayed and the screen will be locked.</li> <li>To unlock the OSD screen, press and hold the MENU button again for several seconds. The "OSD UNLOCKED" message will be displayed and the screen will be unlocked.</li> </ul>
VOL / ◀	Adjust the volume of the monitor.(only works in Cloud mode)/the left arrow key.	
CLOUD / ▶	Disconnects the connection when the key is pressed for a few seconds while in Cloud mode;the right arrow key.	
AUTO / ▼	To adjust the monitor settings, press the AUTO button on the MONITOR SETUP OSD menu (only supported for analog signal). For optimal screen display, use the following resolution.	
	<b>Optimal Resolution</b>	1440 x 900
INPUT	Allows selection of the input signal. <ul style="list-style-type: none"> <li>If you connect the monitor to a computer using a D-SUB cable, select either the CLOUD or D-SUB input signal.</li> <li>The initial input signal is D-SUB.</li> </ul>	
EXIT	Exits the OSD menu.	
⏻ (Power Button)	<ul style="list-style-type: none"> <li>D-SUB Input: Power On/Off</li> <li>CLOUD Input</li> </ul> Monitor Off: Press the power button once then the monitor will be turned off after 5 seconds. CLOUD Off: Press the power button twice then the monitor and CLOUD connection will be disabled. CLOUD On: Press the power button.	
	<b>Power Indicator</b>	When the monitor is in operating mode, the power indicator will turn Red (on mode). When the monitor is in power saving mode, the power indicator will blink Red.

## Customizing Settings

### Menu Settings

- 1 Press **MENU** button on the bottom of the Monitor set to display the **MENU** OSD.
- 2 Set the options by pressing the ◀ or ▶ or ▼ buttons.
- 3 Select the "**NEXT MENU**" button to enter the more option settings.
- 4 Select **EXIT** to leave the OSD menu.  
To return to the upper menu or set other menu items, use the up arrow (⬆) button.



Each option is explained below.

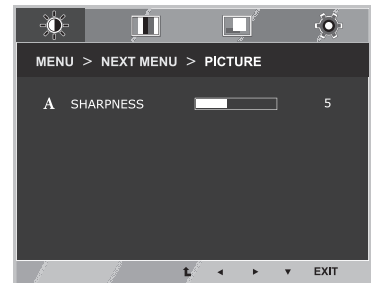
MENU	D-SUB	CLOUD	Description
<b>BRIGHTNESS</b>	•	•	To adjust the brightness, contrast of the screen
<b>CONTRAST</b>	•	•	
<b>WIDE/ORIGINAL</b>	•	•	<b>WIDE</b>
			Switch to full screen mode according to input image signal.
			<b>ORIGINAL</b> Change the input image signal ratio to original. * This function works only if input resolution is lower than Monitor set ratio (16:9).
<b>RESET</b>	•	•	Restore all factory default settings. Press the ◀ , ▶ buttons to reset immediately.

MENU > NEXT MENU		D-SUB	CLOUD	Description
<b>PICTURE</b>	<b>SHARPNESS</b>	•	•	To adjust the clearness of the screen .
	<b>GAMMA</b>	•	•	To customize the color of the screen
<b>COLOR</b>	<b>COLOR TEMP</b>			
<b>DISPLAY</b>	<b>HORIZONTAL</b>	•		To adjust the position of the screen
	<b>VERTICAL</b>			
	<b>CLOCK</b>	•		To improve the clarity and stability of the screen
	<b>PHASE</b>			
<b>OTHERS</b>	<b>LANGUAGE</b>	•	•	To customize the screen status for a user's operating environment
	<b>CLOUD</b>			
	<b>POWER INDICATOR</b>			

- **CLOUD:** Using PC via a network.

## PICTURE

- 1 Press **MENU** button on the bottom of the Monitor set to display the **MENU** OSD.
- 2 Select the "**NEXT MENU**" button to enter the more option settings.
- 3 Enter to **PICTURE** by pressing the ▼ button.
- 4 Set the options by pressing the ◀ or ▶ or ▼ buttons.
- 5 Select **EXIT** to leave the OSD menu.  
To return to the upper menu or set other menu items, use the up arrow (⬆) button.



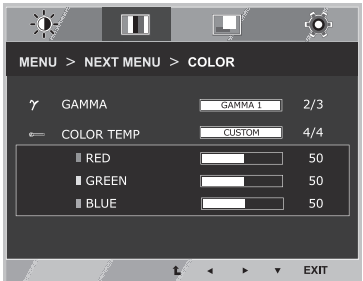
Each option is explained below.

MENU > NEXT MENU > PICTURE	Description
<b>SHARPNESS</b>	To adjust the clearness of the screen.

# COLOR

English

- 1 Press **MENU** button on the bottom of the Monitor set to display the **MENU** OSD.
- 2 Select the "**NEXT MENU**" button to enter the more option settings.
- 3 Select **COLOR** by pressing the ► button.
- 4 Enter to **COLOR** by pressing the ▼ button.
- 5 Set the options by pressing the ◀ or ▶ or ▼ buttons.
- 6 Select **EXIT** to leave the OSD menu.  
To return to the upper menu or set other menu items, use the up arrow (⬆) button.



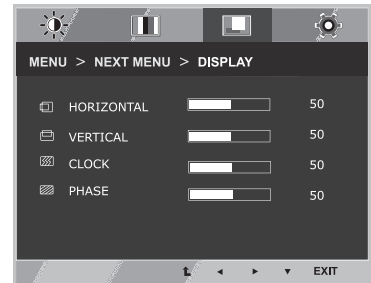
Each option is explained below.

MENU > NEXT MENU > COLOR	Description
<b>GAMMA</b>	Set your own gamma value. : GAMMA 0, GAMMA 1, GAMMA 2 on the monitor, high gamma values display whitish images and low gamma values display blackish images.
<b>COLOR TEMP</b>	<b>CUSTOM</b> <ul style="list-style-type: none"><li>• <b>RED</b>:Set your own red color levels.</li><li>• <b>GREEN</b>: Set your own green color levels.</li><li>• <b>BLUE</b>:Set your own blue color levels.</li></ul> Select the screen color. <b>WARM</b> : Set the screen to warm color temperature (more red). <b>MEDIUM</b> : Set the screen to medium color temperature. <b>COOL</b> : Set the screen to cool color temperature (more blue).



## DISPLAY

- 1 Press **MENU** button on the bottom of the Monitor set to display the **MENU** OSD.
- 2 Select the "**NEXT MENU**" button to enter the more option settings.
- 3 Select **DISPLAY** by pressing the ► button.
- 4 Enter to **DISPLAY** by pressing the ▼ button.
- 5 Set the options by pressing the ◀ or ▶ or ▼ buttons.
- 6 Select **EXIT** to leave the OSD menu.  
To return to the upper menu or set other menu items, use the up arrow (⬆) button.



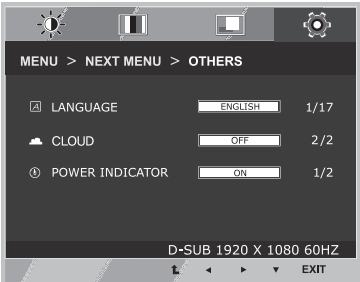
- Only available in D-SUB input mode.

Each option is explained below.

MENU > NEXT MENU > DISPLAY	Description
<b>HORIZONTAL</b>	To move image left and right.
<b>VERTICAL</b>	To move image up and down.
<b>CLOCK</b>	To minimize any vertical bars or stripes visible on the screen background. The horizontal screen size will also change.
<b>PHASE</b>	To adjust the focus of the display. This item allows you to remove any horizontal noise and clear or sharpen the image of characters.

# OTHERS

- 1 Press **MENU** button on the bottom of the Monitor set to display the **MENU** OSD.
- 2 Select the "**NEXT MENU**" button to enter the more option settings.
- 3 Select **OTHERS** by pressing the ► button.
- 4 Enter to **OTHERS** by pressing the ▼ button.
- 5 Set the options by pressing the ◀ or ▶ or ▼ buttons.
- 6 Select **EXIT** to leave the OSD menu.  
To return to the upper menu or set other menu items, use the up arrow (⬆) button.

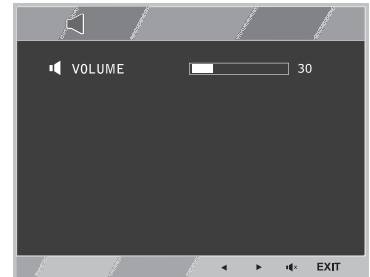


Each option is explained below.

MENU > NEXT MENU > OTHERS		Description
LANGUAGE		To choose the language in which the control names are displayed.
CLOUD	Off	CLOUD is disabled in D-SUB input mode.
	On	CLOUD is enabled in D-SUB input mode.
POWER INDICATOR		Use this function to set the power indicator on the bottom side of the monitor to ON or OFF.If you set OFF, it will go off. If you set ON at any time, the power indicator will automatically be turned on.

## VOLUME

- 1 Press the **VOL** button at the bottom of the monitor to display the **VOL** OSD menu.
- 2 Press the ◀ or ▶ button to adjust the volume.
- 3 Press the 🔊 button to enable or disable Mute.
- 4 Select **EXIT** to leave the OSD menu.



Each option is explained below.

MENU > NEXT MENU > VOLUME	Description
VOLUME	Adjusts the volume (only available in CLOUD input mode).

# TROUBLESHOOTING

Nothing is displayed on the screen	
Is the monitor's power cord plugged in?	<ul style="list-style-type: none"> <li>• Check if the power cord is correctly plugged in to the outlet.</li> </ul>
Is the power indicator on?	<ul style="list-style-type: none"> <li>• Check the power indicator.</li> </ul>
Is the power indicator displaying as red?	<ul style="list-style-type: none"> <li>• Adjust the brightness and the contrast.</li> </ul>
Is the power indicator blinking?	<ul style="list-style-type: none"> <li>• If the monitor is in power saving mode, move the mouse or press any key on the keyboard to switch the display on.</li> <li>• Check if the computer is turned on.</li> </ul>
Is the "OUT OF RANGE" message displayed?	<ul style="list-style-type: none"> <li>• This occurs when signals transferred from the PC (video card) are out of the horizontal or vertical frequency range of the monitor. Please see the "Product Specification" section of this manual to set the appropriate frequency.</li> </ul>
Is the "CHECK SIGNAL CABLE" message displayed?	<ul style="list-style-type: none"> <li>• This is displayed when the signal cable between the PC and the monitor is missing or disconnected. Check the cable and reconnect.</li> </ul>

The "OSD LOCKED" message is displayed.	
Is the "OSD LOCKED" message displayed when the MENU button is pressed?	<ul style="list-style-type: none"> <li>• The OSD lock feature is enabled to prevent undesired modification of the OSD settings. Press and hold the MENU button for a couple of seconds to unlock the OSD. (The "OSD UNLOCKED" message will be displayed.)</li> </ul>

The screen retains an image.	
Does image sticking occur even when the monitor is turned off?	<ul style="list-style-type: none"> <li>• Displaying a still image for a prolonged time may cause damage to the screen, resulting in the retention of the image.</li> <li>• Use a screen saver to protect the screen when using the monitor for a prolonged period of time.</li> </ul>



## NOTE

- **Vertical Frequency:** In order to display an image, the screen must be refreshed dozens of times per second like a fluorescent lamp. The number of times the screen is refreshed per second is called vertical frequency or refresh rate and is represented by Hz.
- **Horizontal Frequency:** The time it takes to display one horizontal line is called the horizontal cycle. The number of horizontal lines displayed in one second can be calculated by dividing one by the horizontal cycle. This is called horizontal frequency and is represented by kHz.

The image is displayed abnormally.	
Does the display area appear un-centered?	Pressing the AUTO button will automatically optimize the screen to the current display mode.
Does the screen exhibit vertical lines?	Pressing the AUTO button will automatically optimize the screen to the current display mode.
Does the screen display horizontal frequencies, or does the text appear blurred?	Pressing the AUTO button will automatically optimize the screen to the current display mode.

### ! NOTE

- Check if the video card's resolution or frequency is within the range allowed by the monitor and set to the recommended (optimal) resolution in **Control Panel > Display > Settings**.
- Failing to set the video card to the recommended (optimal) resolution may result in blurred text, a dimmed screen, a truncated display area or misalignment of the display.
- The configuration procedure may differ depending on your computer and/or operating system. Also, some video cards may not support certain resolutions. If this is the case, contact the computer or video card manufacturer for assistance.
- The AUTO option is only available for D-SUB (analog) signals.

The display color is abnormal.	
Does the display color appear dis-colored (16 color)?	<ul style="list-style-type: none"> <li>• Set the color to 24 bit (true color) or higher. In Windows, go to Control Panel &gt; Display &gt; Settings &gt; Color Quality.</li> </ul>
Does the display color appear unstable or in monochrome?	<ul style="list-style-type: none"> <li>• Check if the signal cable is connected properly. Re-connect the cable or re-insert the PC's video card.</li> </ul>
Are there spots on the screen?	<ul style="list-style-type: none"> <li>• When using the monitor, pixilated spots (red, green, blue, white or black) may appear on the screen. This is normal for the LCD screen. It is not an error nor is it related to the monitor's performance.</li> </ul>

# PRODUCT SPECIFICATION

LCD Screen	Type	48.1 cm (19 inch) TFT (Thin Film Transistor) LCD (Liquid Crystal Display) Screen Diagonal length of the screen: 48.1 cm
	Pixel Pitch	0.2835 mm x 0.2835 mm
Resolution	Maximum Resolution	1440 x 900 @ 60 Hz
	Recommended Resolution	1440 x 900 @ 60 Hz
	DVI-I output	1920 x 1200 @ 60 Hz
Video Signal	Horizontal Frequency	30 kHz to 66 kHz
	Vertical Frequency	57 Hz to 63 Hz
	Synchronization	Separate Sync
Input Connector	15-pin D-SUB (Analog)	
Power	19 V --- 2.3 A	
	Power Consumption: CLOUD/D-SUB	On Mode: 17 W(D-sub)/22 W(CLOUD) Power Saving Mode ≤ 0.5 W(CLOUD mode: 7 W) Off Mode ≤ 0.5 W
AC/DC Adapter	Type PA-1650-68, manufactured by LITE-ON TECHNOLOGY CORPORATION. OUTPUT: 19 V --- 3.42 A	
Dimension/ Weight	Monitor Size (Width x Height x Depth)	
	With Stand	440.2 mm x 370 mm x 225 mm
	Without Stand	440.2 mm x 303.2 mm x 47 mm
Weight (Without Packaging)	4.64 kg	
Stand Angle Adjustment	Forwards/Backwards: -5° to 15° (Monitor)	
Environment Condition	Operating Condition	Temperature: 10°C to 35°C; Humidity: 10% to 80%
	Storing Condition	Temperature: -20°C to 60°C; Humidity: 5% to 90%

The specifications are subject to change without notice.

## Preset Mode

Display Modes (Resolution)	Horizontal Frequency (kHz)	Vertical Frequency (Hz)	Polarity (H/V)	Remark
720 x 400	31.468	70.08	-/+	
640 x 480	31.469	59.94	-/-	
800 x 600	37.879	60.317	+/+	
1024 x 768	48.363	60	-/-	
1440 x 900	55.935	59.888	-/+	Recommended Mode

## Power Indicator

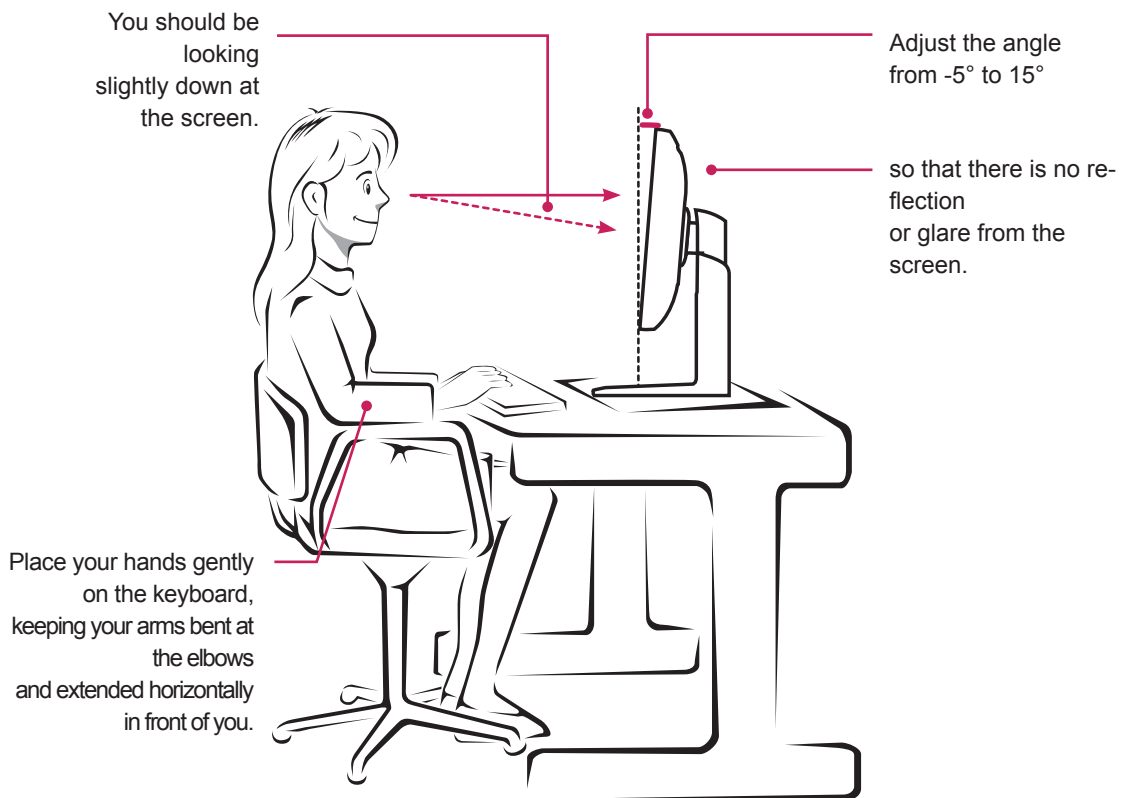
Mode	LED Color
On Mode	Red
Power Saving	Blinking Red
Off Mode	Off

# PROPER POSTURE

## Proper posture for using the monitor

Adjust the angle so that the screen is slightly lower than your eyes.

- Using the monitor for a prolonged period of time can cause eye fatigue. Take a 10-minute break every hour.
- The stand is designed to best support the monitor when the optimal conditions are selected. Adjust the angle of the monitor from  $-5^{\circ}$  to  $15^{\circ}$  to obtain the best view of the screen.





# USING CLOUD SOLUTION

## ! NOTE

- Menus and functions in CLOUD mode may be slightly different depending on the firmware version. You can download the user manual for each version from the Teradici homepage: <http://www.teradici.com>
- To check the firmware version, see page <47>.

### Connect Screen

The Connect screen is shown during start-up, except when the portal has been configured for a managed start-up or auto-reconnect. The logo displayed above the Connect button can be changed by uploading a replacement image via the admin interface.



<Figure 2-1: OSD Connect Screen>

If the network is not properly connected (e.g., during portal boot up), or connection is being created, the "Network connection lost. Waiting for connection ..." message is displayed on the Connection screen.

Figure 2-2 shows the message displayed when the network is not ready.



<Figure 2-2: Network Not Ready>

If the network is connected and IP is being acquired, the message "Network connection detected. Acquiring IP address ..." is displayed on the Connection screen. Figure 2-3 shows the message displayed when the network is ready and the IP is being acquired.



<Figure 2-3 Acquiring the IP after Network Connected>

The below is the Connection screen displayed when network is completely ready.



<Figure 2-4: Network Ready>

If you select the Connect button, the connection session is started. When the connection is pending, the "Discovering hosts, please wait..." message is displayed on the OSD local GUI. When the connection is established, the OSD local GUI will disappear and be replaced by the session image.



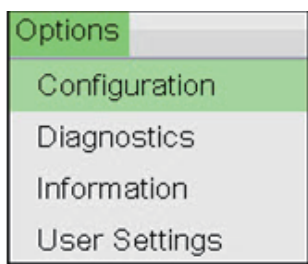
<Figure 2-5: OSD Connect Screen (Connecting)>

#### OSD Options Menu

Selecting the Options menu will produce a list of selections. The OSD Options menu contains:

- Configuration
- Diagnostics
- Information
- User Settings

Selecting one of the options will produce a settings window.



<Figure 2-6: OSD Options Menu>

#### Configuration Window

In the Configuration window, the administrator can access the window tabs that contain the settings to configure and manage the portal environment.

The Configuration window has the following tabs:

- **Network**
- **Label**
- **Connection Management**
- **Discovery**
- **Session**
- **RDP**
- **Language**
- **OSD**
- **Reset**
- **Display**
- **VMware View**

Each tab contains OK, Cancel and Apply buttons to allow the administrator to apply or cancel the modified settings as well as the Advanced button for advanced settings.



#### NOTE

- Some PCoIP devices have their password protection disabled and can be logged into the management web page or access the OSD parameters without a password. The login page and the OSD's password protection can be enabled in the PCoIP management console.

## Network Tab

The Network tab allows the administrator to configure the portal network parameters.

### NOTE

- The network parameters can also be configured using the Webpage Administration Interface.

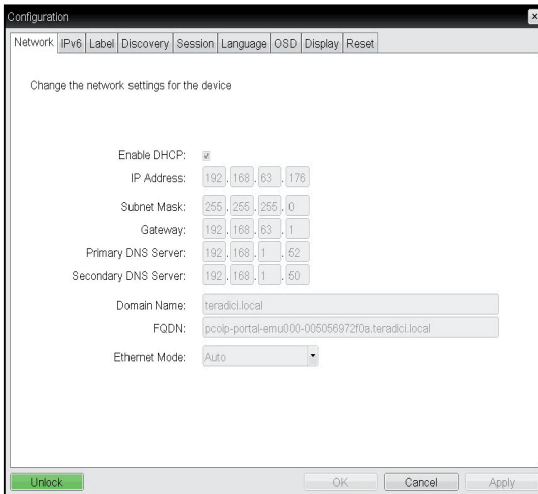


Figure 2-7. Network Configuration

### • Enable DHCP

If the Enable DHCP option is selected, a device will be connected to the DHCP server, that allocates the IP address, subnet mask, gateway IP address, and DNS server. If this option is disabled, the above parameters must be configured manually.

### • IP Address

The IP Address field contains the IP address of the device. If DHCP is disabled, this field is required. If DHCP is enabled, this field cannot be edited. This field must contain the correct IP address. If an incorrect IP address is provided, an OSD message is displayed prompting the administrator to provide the correct the IP address.

### • Subnet Mask

The Subnet Mask field contains the subnet mask of the device. If DHCP is disabled, this field is required. If DHCP is enabled, this field cannot be edited. This field must have the correct subnet mask. If an incorrect subnet mask is provided, an OSD message is displayed prompting the administrator to provide the correct the subnet mask.

### • Gateway

The Gateway field contains the gateway IP address of the device. If DHCP is disabled, this field is required. If DHCP is enabled, this field cannot be edited.

### • Primary DNS Server

The Primary DNS Server field contains the primary DNS IP address of the device. This field is optional. If DHCP is enabled, this field cannot be edited.

### • Secondary DNS Server

The Secondary DNS Server field contains the secondary DNS IP address of the device. This field is optional. If the DHCP is enabled, this field cannot be edited.

### • Domain Name

The Domain Name field contains the domain name used, e.g. "domain local". This field is optional. It specifies on which domain the host or portal operates.

### • FQDN

The FQDN field represents the Fully Qualified Domain Name of the host or portal. The default value is PColP-host-MAC or PColP-portal-MAC, where MAC is the MAC address of the host or portal. If there is a domain name, it will be added to the FQDN in the format of PColP-host-MAC.domain.local

### NOTE

- In order to utilize the FQDN feature, a DNS server, configured properly with DHCP option 81, must be used.

### • Ethernet Mode

The Ethernet Mode field specifies the portal's Ethernet mode.

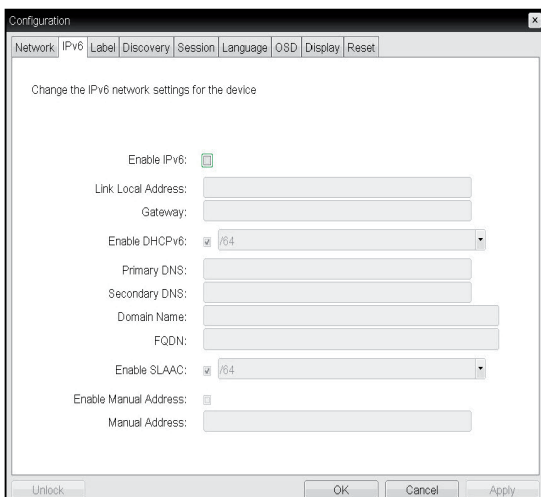
The available options are as follows.

- Auto
- 100 Mbps Full-Duplex
- 10 Mbps Full-Duplex

If another network device (for example, a switch) is configured to operate under 10 Mbps Full-Duplex, 100Mbps Full-Duplex or 1GbpsFull-Duplex, the administrator should always set the Ethernet Mode field to Auto; and if the device is to operate under only one speed out of multiple settings, select either 10 Mbps Full-Duplex or 100 Mbps Full-Duplex.

## &lt;IPv6&gt; Tab

The IPv6 tab is used when the portal is connected to the network configured with the IP v6.



<Figure 2-8: IPv6 Configuration>

- **Enable IPv6**

If you select Enable IPv6, the portal in use can be connected to the network configured with the IPv6.

- **Link Local Address**

The Link Local Address field is automatically filled with the IP address of a device.

- **Gateway**

The Gateway field contains the gateway IP address of the device. Enter the gateway address to be used by a device.

- **Enable DHCPv6**

To assign the Dynamic Host Configuration Protocol version 6 (DHCPv6) of a device select the Enable DHCPv6 field.

- **DHCPv6 Addresses**

When DHCPv6 is enabled and the device restarts, the server enters the device addresses automatically.

- **Primary DNS Server**

The Primary DNS Server field contains the primary DNS IP address of the device. This field is optional. If DHCPv6 is enabled, this field cannot be edited.

- **Secondary DNS Server**

The Secondary DNS Server field contains the secondary DNS IP address of the device. This field is optional. If DHCPv6 is enabled, this field cannot be edited.

- **Domain Name**

The Domain Name field contains the domain name used, e.g. "domain local". This field is optional. It specifies on which domain the host or portal operates.

- **FQDN**

The FQDN field represents the Fully Qualified Domain Name of the host or portal. The default value is PCoIP-host-MAC or PCoIP-portal-MAC, where MAC is the MAC address of the host or portal. If there is a domain name, it will be added to the FQDN in the format of PCoIP-host-MAC.domain.local.

- **Enable SLAAC**

Select the Enable SLAAC field to use the stateless auto-configuration of the device.

- **Enable Manual Address**

Select the Enable Manual Address field to enter the device address manually.

- **Manual Address**

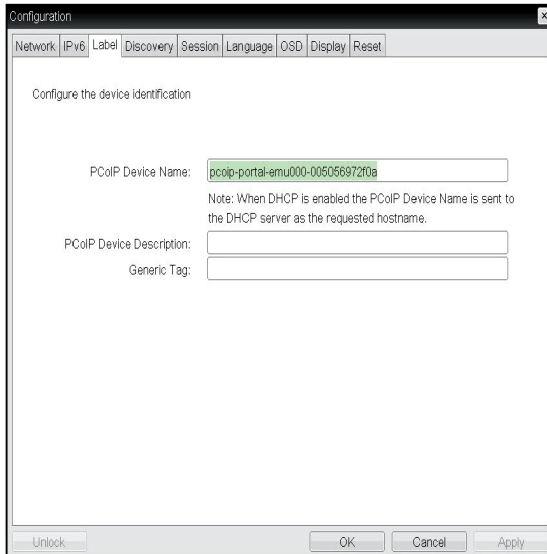
In the Manual Address field, enter the IP address manually.

### Label Tab

The Label tab allows the administrator or host to add customized information to the portal.

#### NOTE

- The portal label parameters can also be configured using the Webpage Administration Interface.



<Figure 2-9: Label Configuration>

#### • PCoIP Device Name

In the PCoIP Device Name field, the administrator can specify a logical name to the host or portal. The default value is PCoIP-host-MAC or PCoIP-portal-MAC, where MAC is the MAC address of the host or portal.

#### • PCoIP Device Description

In the PCoIP Device Description field, the administrator can add specific information, such as the endpoint location, or add a description to the host or portal. This field cannot be used in the PCoIP firmware and accessibility is strictly limited to the administrator.

#### • Generic Tag

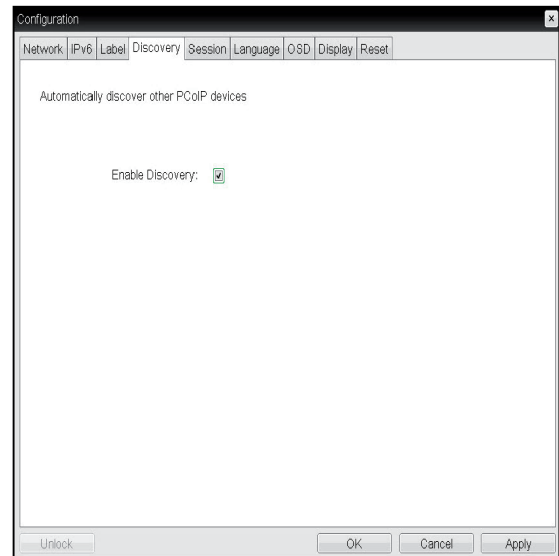
In the Generic Tag field, the administrator can add a generic tag to the host or portal. This field cannot be used in the PCoIP firmware and accessibility is strictly limited to the administrator.

### Discovery Tab

The Discovery tab allows the administrator to easily find a portal in the PCoIP system.

#### NOTE

- The Discovery parameters can also be configured using the Webpage Administration Interface.



<Figure 2-10: Discovery Configuration>

#### • Enable Discovery

If the Enable Discovery option is selected, a device will use SLP Discovery to dynamically locate the peer device without requiring any information about the location of the device in the network. This means that the configuration and maintenance work in a complicated system can be significantly reduced.

As SLP Discovery requires a multicast-enabled router, the recommended search structure is DNS-SRV Discovery.

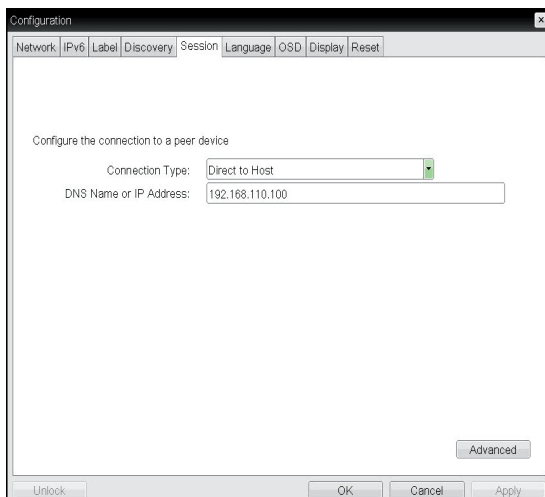
### Session Tab

The Session tab allows the administrator to set the method to connect the device to a peer device.



#### NOTE

- The Session parameters can also be configured using the Webpage Administration Interface.



<Figure 2-11: Session Configuration>

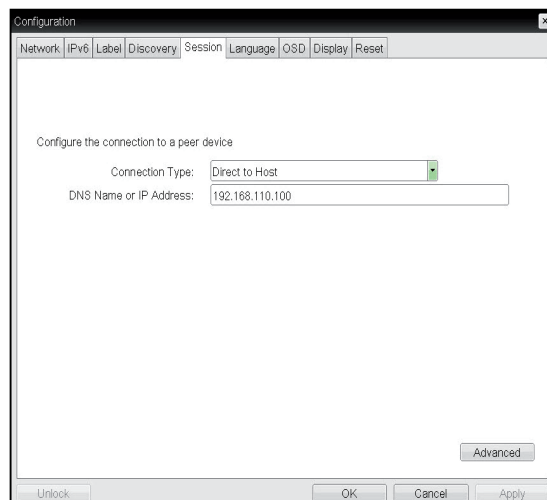
#### • Connection Type

The Connection Type field allows the user to select the device to be connected with the portal.

The Connection Type field has following options:

- Direct to Host
- Direct to Host + SLP Host Discovery
- View Connection Server
- View Connection Server + Auto-Logon
- View Connection Server + Kiosk
- View Connection Server + Imprivata OneSign
- Connection Management Interface

See below for information how to set for each option.



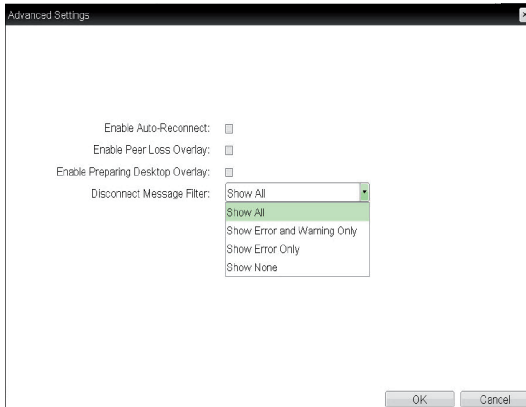
<Figure 2-12: Direct to Host Setting>

#### • Direct to Host

You can view the screen of the host PC by establishing 1:1 connection between the PCI host card connected to the host PC through the entered IP address of the host PC and the portal.

#### • DNS Name or IP Address

Enter the DNS name or IP address of the host PC.



<Figure 2-13: Advanced Settings for Direct to Host>

#### • Enable Auto-Reconnect

If this option is selected, reconnection is attempted automatically when a session is disconnected or the user is logged off.

#### NOTE

- This setting is provided only for the client.

#### • Enable Peer Loss Overlay

The "Connection Lost" message is displayed. The display is the same as in the VDI environment. The default is Disable.

#### NOTE

- This setting is provided only for the client.

#### • Enable Preparing Desktop Overlay

If this option is selected, the "Preparing Desktop" message is displayed on the screen when the user is logged in.

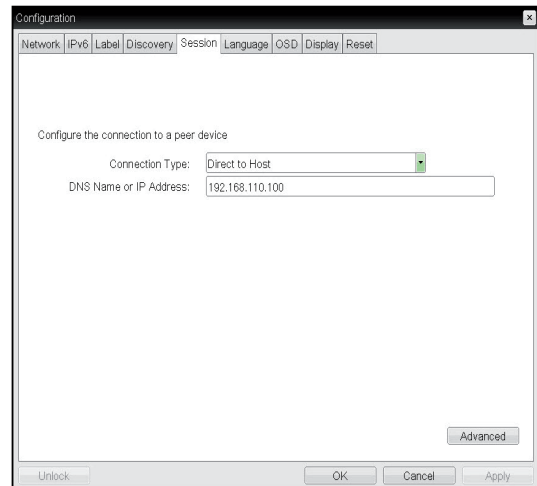
#### • Disconnect Message Filter

This option determines the type of message to display when a session is disconnected.

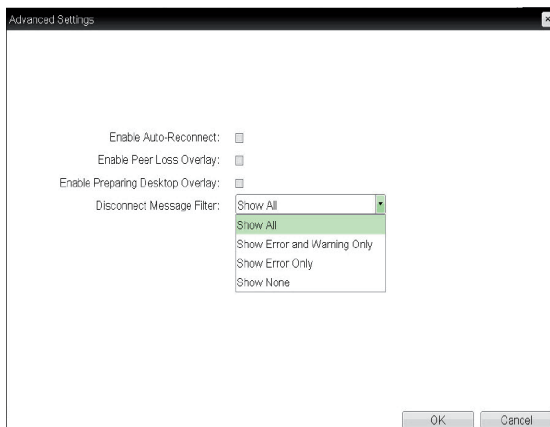
- Show All: Shows all the error messages.
- Show Error and Warning Only: Shows the error and warning messages only.
- Show Error Only: Shows the error messages only.
- Show None: Shows nothing.

#### • Direct to Host + SLP Host Discovery

You can view the screen of the host PC by discovering the host PC within the network and establishing 1:1 connection between the PCI host card connected to the host PC and the portal.



<Figure 2-14: Direct to Host + SLP Host Discovery Settings>



<Figure 2-15: Advanced Settings for Direct to Host + SLP Host Discovery>

#### • Enable Auto-Reconnect

If this option is selected, reconnection is attempted automatically when a session is disconnected or the user is logged off.



#### NOTE

- This setting is provided only for the client.

#### • Enable Peer Loss Overlay

The "Connection Lost" message is displayed. The display is the same as in the VDI environment. The default is Disable.



#### NOTE

- This setting is provided only for the client.

#### • Enable Preparing Desktop Overlay

If this option is selected, the "Preparing Desktop" message is displayed on the screen when the user is logged in.

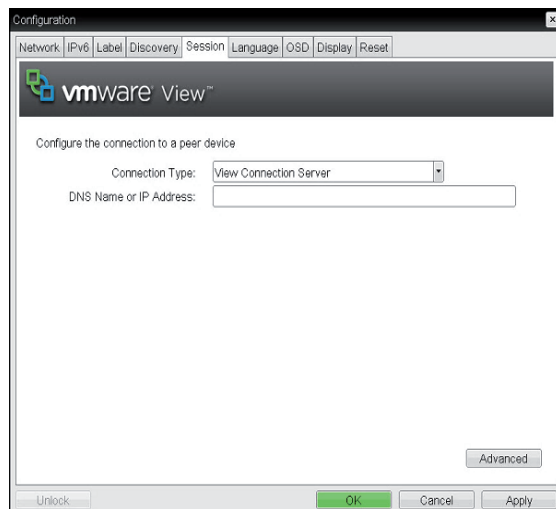
#### • Disconnect Message Filter

This option determines the type of message to display when a session is disconnected.

- Show All: Shows all the error messages.
- Show Error and Warning Only: Shows the error and warning messages only.
- Show Error Only: Shows the error messages only.
- Show None: Shows nothing.

#### • View Connection Server

In the Session tab, you can select to enable the user client to access the VMware View ConnectionServer. To do this, select View Connection Server for Connection Type.

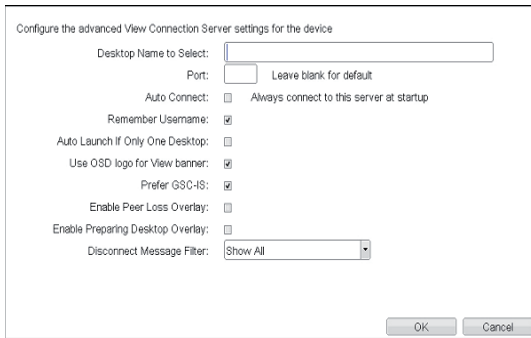


<Figure 2-16: View Connection Server Setting>

#### • DNS Name or IP Address

Enter the DNS name or IP address of the VMware View Connection Server.





<Figure 2-17: Advanced Settings for View Connection Server>

- **Desktop Name to Select**

Enter the name of the pool/desktop which the user client uses upon starting a session.

- **Port**

For the default setting, leave the port field empty. When the VMware View Connection Server uses the SSL authentication, enter 443 in the Port field. If the server where a user tries to access uses a port other than a general port, enter the port.

- **Auto Connect**

If this option is enabled, the selected VMware View Connection Server is automatically connected when the user client is powered on.

If the Auto Connect option is enabled, you should turn the user client off and turn it on again at least once.

- **Remember Username**

If this option is selected, the username which is previously used to access the VMware View Connection Server is automatically entered in the username field.

- **Auto Launch if Only One Desktop**

If this option is selected, connection is established to the desktop when there is only one virtual desktop that a user wants to access.

- **Use OSD logo for View banner**

If this option is enabled, you can change the OSD logo of PCoIP during the login.

**NOTE**

- The OSD logo can be uploaded using the Webpage Administration Interface.

- **Prefer GSC-IS**

If this option is selected, the GCS-IS interface is used when a smart card supports more than one interface. If the smart card supports only one interface, it is not used.

**NOTE**

- This setting is provided only when a smart card is used.

- **Enable Peer Loss Overlay**

If this option is selected, the "Network Connection Lost" message is displayed on the screen when it is confirmed that the network is disconnected. The display is the same as in the VDI environment. The default is Disable.

**NOTE**

- This setting is provided only for the client.

- **Enable Preparing Desktop Overlay**

If this option is selected, the "Preparing Desktop" message is displayed on the screen when the user is logged in.

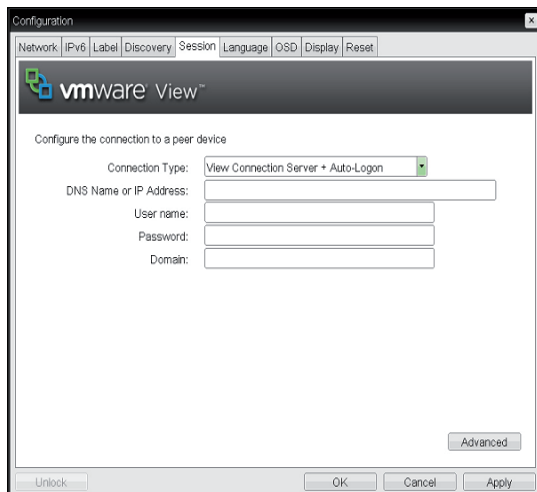
- **Disconnect Message Filter**

This option determines the type of message to display when a session is disconnected.

- Show All: Shows all the error messages.
- Show Error and Warning Only: Shows the error and warning messages only.
- Show Error Only: Shows the error messages only.
- Show None: Shows nothing.

### • View Connection Server with Auto-Logon

In the Session tab, you can select to enable the user client to automatically access the VMware View Connection Server. To do this, select View Connection Server with Auto-Logon for Connection Type.



<Figure 2-18: View Connection Server with Auto-Logon Setting>

### • DNS Name or IP Address

Enter the DNS name or IP address of the VMware View Connection Server.

### • Username

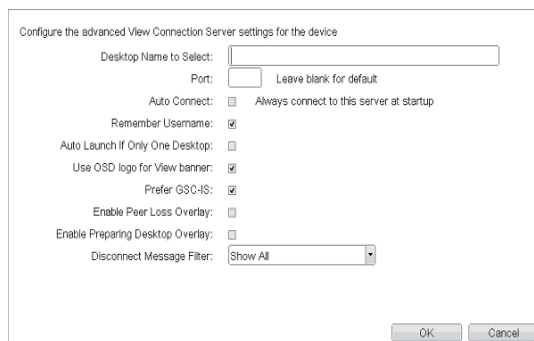
Enter the username for the user client.

### • Password

Enter the password for the user client.

### • Domain

Enter the domain name.



<Figure 2-19: Advanced Settings for View Connection Server with Auto-Logon>

### • Desktop Name to Select

Enter the name of the pool/desktop which the user client uses upon starting a session.

### • Port

For the default setting, leave the port field empty. When the VMware View Connection Server uses the SSL authentication, enter 443 in the Port field. If the server where a user tries to access uses a port other than a general port, enter the port.

### • Auto Connect

If this option is enabled, the selected VMware View Connection Server is automatically connected when the user client is powered on.

If the Auto Connect option is enabled, you should turn the user client off and turn it on again at least once.

### • Remember Username

If this option is selected, the username which is previously used to access the VMware View Connection Server is automatically entered in the username field.

### • Auto Launch if Only One Desktop

If this option is selected, connection is established to the desktop when there is only one virtual desktop that a user wants to access.

### • Use OSD logo for View banner

If this option is enabled, you can change the OSD logo of PCoIP during the login.



### NOTE

- The OSD logo can be uploaded using the Webpage Administration Interface.

- **Prefer GSC-IS**

If this option is selected, the GSC-IS interface is used when a smart card supports more than one interface. If the smart card supports only one interface, it is not used.

**NOTE**

- This setting is provided only when a smart card is used.

- **Enable Peer Loss Overlay**

If this option is selected, the "Network Connection Lost" message is displayed on the screen when it is confirmed that the network is disconnected. The display is the same as in the VDI environment. The default is Disable.

**NOTE**

- This setting is provided only for the client.

- **Enable Preparing Desktop Overlay**

If this option is selected, the "Preparing Desktop" message is displayed on the screen when the user is logged in.

- **Disconnect Message Filter**

This option determines the type of message to display when a session is disconnected.

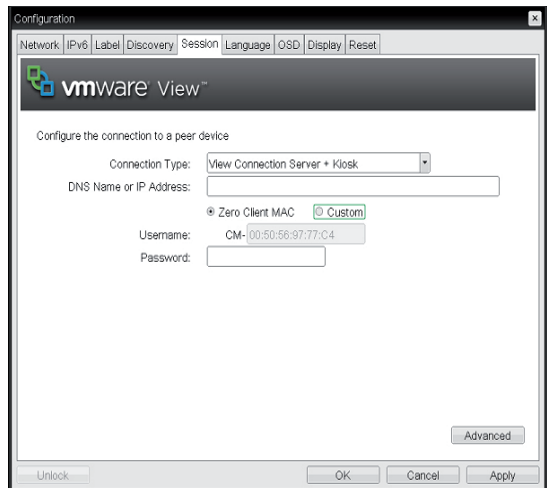
- Show All: Shows all the error messages.
- Show Error and Warning Only: Shows the error and warning messages only.
- Show Error Only: Shows the error messages only.
- Show None: Shows nothing.

- **View Connection Server + Kiosk**

Select View Connection Server + Kiosk to use the kiosk mode. You can configure the View Connection Server + Kiosk mode using the Webpage Administration Interface.

**NOTE**

- You cannot use the kiosk mode by connecting to the host PC.



<Figure 2-20: View Connection Server + Kiosk Setting>

- **DNS Name or IP Address**

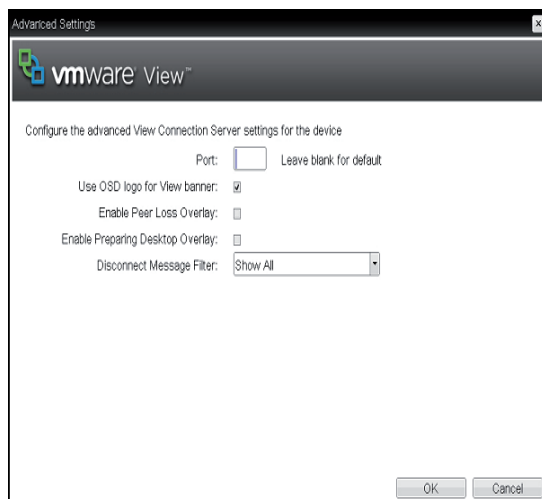
Enter the DNS name or IP address of the VMware View Connection Server.

- **Username**

Select the type of username that matches the device name used in the VMware View Connection Server.

- **Password**

Enter the password for the user client.



<Figure 2-21: Advanced Setting for View Connection Server + Kiosk>

#### • Port

For the default setting, leave the port field empty. When the VMware View Connection Server uses the SSL authentication, enter 443 in the Port field. If the server where a user tries to access uses a port other than a general port, enter the port.

#### • Use OSD logo for View banner

If this option is enabled, you can change the OSD logo of PCoIP during the login.



#### NOTE

- The OSD logo can be uploaded using the Webpage Administration Interface.

#### • Enable Peer Loss Overlay

If this option is selected, the "Network Connection Lost" message is displayed on the screen when it is confirmed that the network is disconnected. The display is the same as in the VDI environment. The default is Disable.



#### NOTE

- This setting is provided only for the client.

#### • Enable Preparing Desktop Overlay

If this option is selected, the "Preparing Desktop" message is displayed on the screen when the user is logged in.

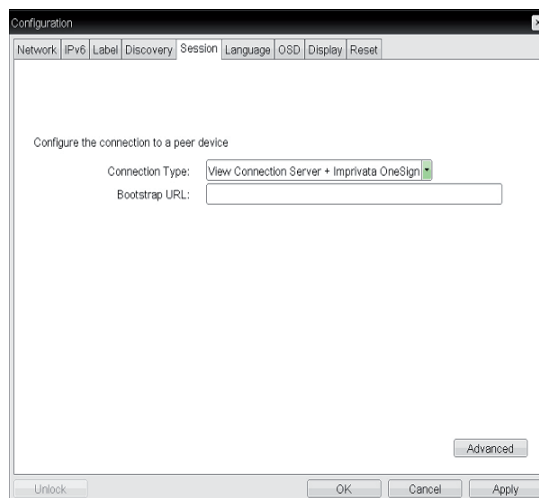
#### • Disconnect Message Filter

This option determines the type of message to display when a session is disconnected.

- Show All: Shows all the error messages.
- Show Error and Warning Only: Shows the error and warning messages only.
- Show Error Only: Shows the error messages only.
- Show None: Shows nothing.

#### • View Connection Server + Imprivata OneSign Connection

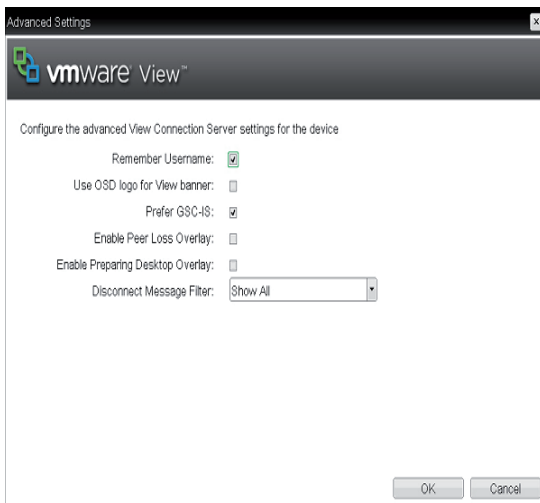
Select View Connection Server + Imprivata One-sign Connection to use the Imprivata One-sign Connection for the client authentication.



<Figure 2-22: View Connection Server + Imprivata One-Sign Connection Setting>

#### • Bootstrap URL

Enter the IP address or FQDN information of the server which performs the OneSign authentication.



<Figure 2-23: Advanced Settings for View Connection Server + Imprivata OneSign Connection>

- **Remember Username**

If this option is selected, the username which is previously used to access the VMware View Connection Server is automatically entered in the username field.

- **Use OSD logo for View banner**

If this option is enabled, you can change the OSD logo of PCoIP during the login.

**NOTE**

- The OSD logo can be uploaded using the Webpage Administration Interface.

- **Prefer GSC-IS**

If this option is selected, the GSC-IS interface is used when a smart card supports more than one interface. If the smart card supports only one interface, it is not used.

**NOTE**

- This setting is provided only when a smart card is used.

- **Enable Peer Loss Overlay**

If this option is selected, the "Network Connection Lost" message is displayed on the screen when it is confirmed that the network is disconnected. The display is the same as in the VDI environment. The default is Disable.

**NOTE**

- This setting is provided only for the client.

- **Enable Preparing Desktop Overlay**

If this option is selected, the "Preparing Desktop" message is displayed on the screen when the user is logged in.

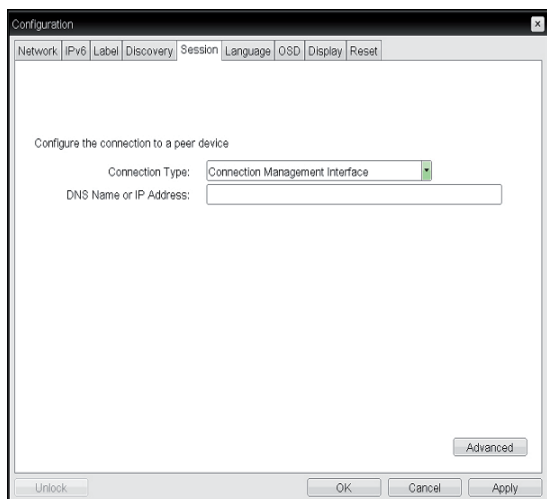
- **Disconnect Message Filter**

This option determines the type of message to display when a session is disconnected.

- Show All: Shows all the error messages.
- Show Error and Warning Only: Shows the error and warning messages only.
- Show Error Only: Shows the error messages only.
- Show None: Shows nothing.

- **Connection Management Interface**

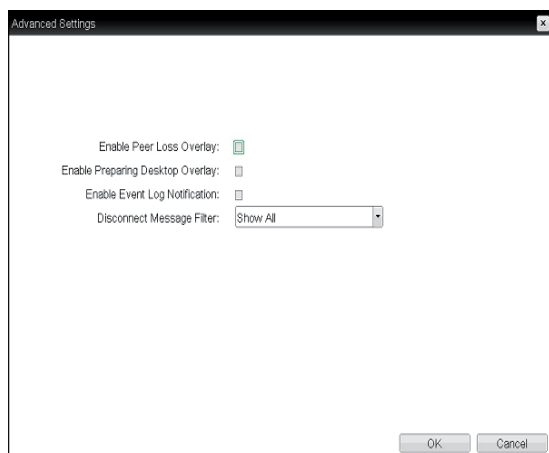
In the Connection Management Interface setting, you can manage the connection by entering the IP address for connection management instead of using the IP address of the VMware View Connection Server and can select to enable or disabled the management interface.



<Figure 2-24: Connection Management Interface Setting>

- **DNS Name or IP Address**

Enter the DNS name or IP address of the VMware View Connection Server.



<Figure 2-25: Advanced Settings for Connection Management Interface>

- **Enable Peer Loss Overlay**

If this option is selected, the "Network Connection Lost" message is displayed on the screen when it is confirmed that the network is disconnected. The display is the same as in the VDI environment. The default is Disable.



#### NOTE

- This setting is provided only for the client.

- **Enable Preparing Desktop Overlay**

If this option is selected, the "Preparing Desktop" message is displayed on the screen when the user is logged in.

- **Enable Event Log Notification**

With this option, you can select whether to allow the host and client device to send their event log information to the Connection Management Server.

- **Disconnect Message Filter**

This option determines the type of message to display when a session is disconnected.

- Show All: Shows all the error messages.
- Show Error and Warning Only: Shows the error and warning messages only.
- Show Error Only: Shows the error messages only.
- Show None: Shows nothing.

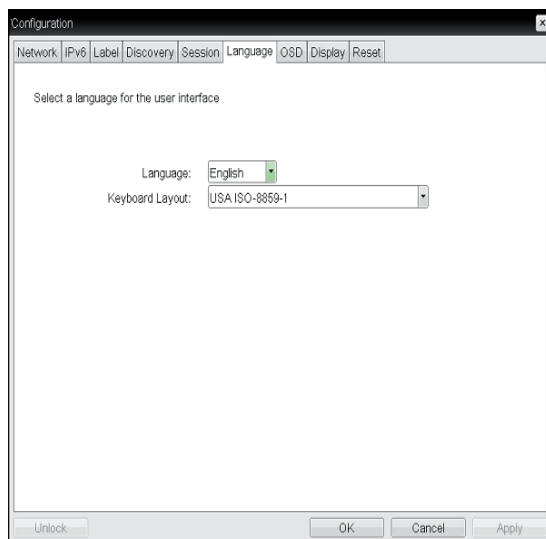
## Language Tab

The Language tab allows the administrator to set the OSD language.



#### NOTE

- The Language parameters can also be configured using the Webpage Administration Interface.



<Figure 2-26: Language Configuration>

- **Language**

The Language field is used to set the display language of the OSD and the user level event log messages.

- **Keyboard Layout**

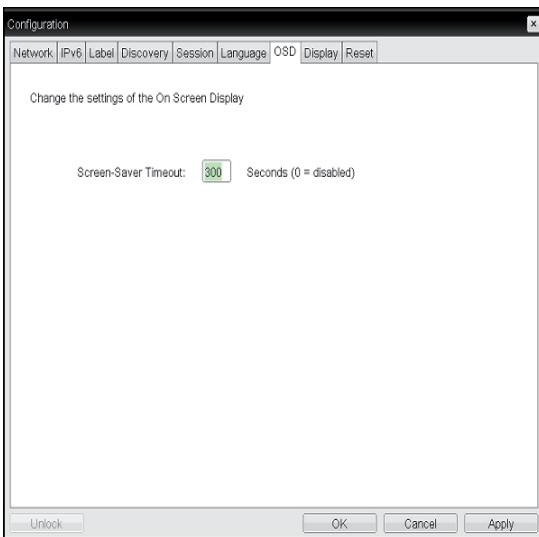
The Keyboard Layout field allows the administrator to modify the keyboard layout.

### OSD Tab

The OSD tab allows the administrator to modify the On Screen Display (OSD) parameters.

#### NOTE

- The OSD parameters can also be configured using the Webpage Administration Interface.



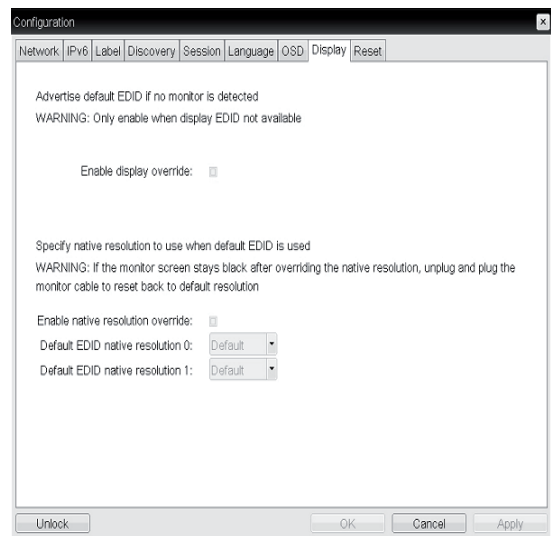
<Figure 2-27: OSD Configuration>

### Display Tab

The Display tab allows the user to configure the EDID function of the monitor.

#### NOTE

- The Enable display override function can be used when the EDID function of the monitor is not running.



<Figure 2-28: Display Configuration>

#### • Screen-Saver Timeout

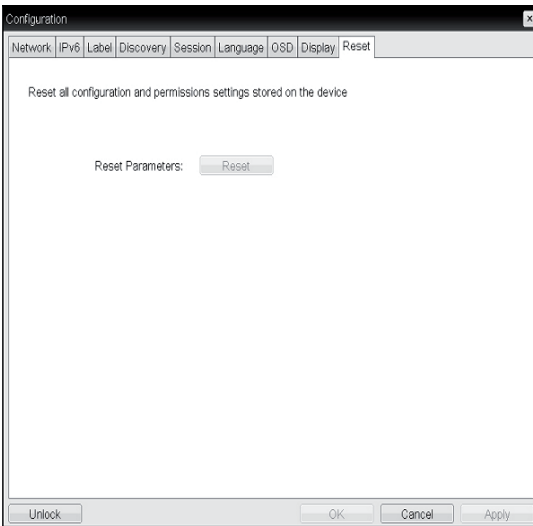
The Screen-Saver Timeout field allows the administrator to set a time limit for the screen saver. The time limit is defined in seconds. The maximum time is 9999 seconds. If it is set to 0 seconds, the screen saver will be turned off.

### Reset Tab

The Reset tab allows the administrator to reset all configurable parameters stored in Flash.

#### NOTE

- The Reset function can also be accessed through the Webpage Administration Interface.



<Figure 2-29: Reset>

#### • Reset Parameters

Pressing the Reset Parameters button will reset all settings and options to the factory default settings. When this button is pressed, an OSD message is displayed. This is to prompt the administrator and prevent accidental reset.

### Diagnostics Window

In the Diagnostics window, the administrator can access the window tab to diagnose the portal. The Diagnostics window has the following tabs:

- Event Log
- Session Statistics
- PCoIP Processor
- Ping

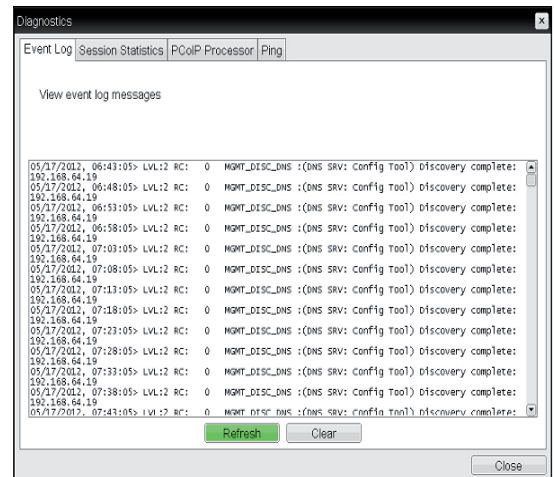
Each tab has the Close button to close the window.

### Event Log Tab

The Event Log tab allows the administrator to view and delete the event log messages from the portal.

#### NOTE

- The event log (regardless of the quantity) can also be reset using the Webpage Administration Interface.



<Figure 2-30: Event Log>

#### • View Event Log Message

The View Event Log Message field displays the log messages accompanied by the timestamp information. The following two buttons are available:

#### • Refresh

The Refresh button refreshes the displayed event log messages.

#### • Clear

The Clear button clears all event log messages.

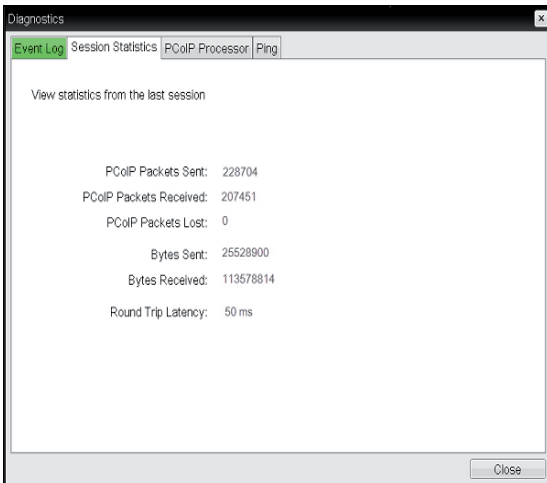


### Session Statistics Tab

The Session Statistics tab allows the administrator to view the PCoIP specific statistics of the last active PCoIP session from the portal.

#### NOTE

- The session statistics (regardless of the quantity) can also be viewed using the Webpage Administration Interface.



<Figure 2-31: Session Statistics>

#### • PCoIP Packets Statistics

##### • PCoIP Packets Sent

The PCoIP Packets Sent field shows the total number of PCoIP packets sent from the portal to the host in the last active session.

##### • PCoIP Packets Received

The PCoIP Packets Received field shows the total number of PCoIP packets received from the host to the portal in the last active session.

##### • PCoIP Packets Lost

The PCoIP Packets Lost field shows the total number of PCoIP packets lost in the last active session.

#### • Bytes Statistics

##### • Bytes Sent

The Bytes Sent field shows the total number of bytes sent in the last active session.

##### • Bytes Received

The Bytes Received field shows the total number of bytes received in the last active session.

#### • Round Trip Latency

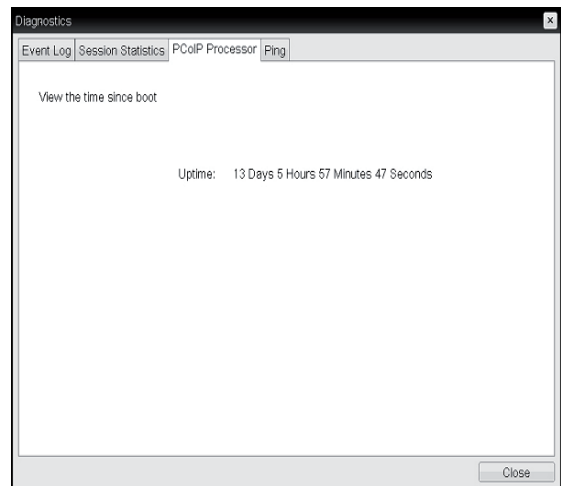
The Round Trip Latency field shows the total round-trip PCoIP system (e.g. from the portal to the host, then back to the portal) and the network latency in milliseconds (+/- 1 ms).

### PCoIP Processor Tab

The PCoIP Processor tab allows the administrator to view the portal PCoIP processor's uptime since its last booting.

#### NOTE

- The PCoIP Processor Uptime can also be viewed using the Webpage Administration Interface.



<Figure 2-32: PCoIP Processor>

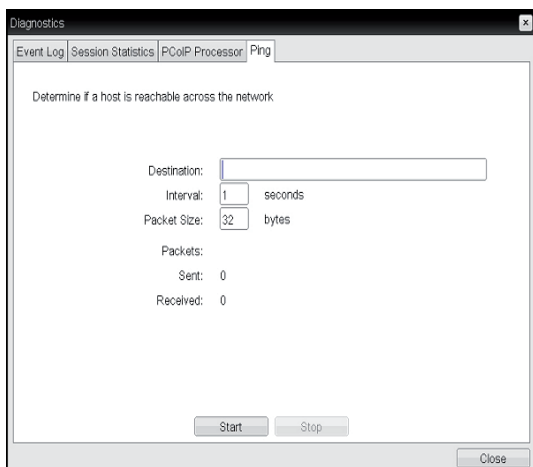
## Ping Tab

The Ping tab allows the administrator to perform a ping test to the device and check if it can reach the overall IP network. This is useful to check whether the device can reach the host.



### NOTE

- The Ping tab has no corresponding menu in to the Webpage Administration Interface of Section 1.



<Figure 2-33: Ping>

### • Ping Settings

- Destination  
The IP address or FQDN to perform the ping test.
- Interval  
The interval between the ping packets.
- Packet Size  
The size of the ping packet.
- Packets
  - Sent  
The number of ping packets sent.
  - Received  
The number of ping packets received.

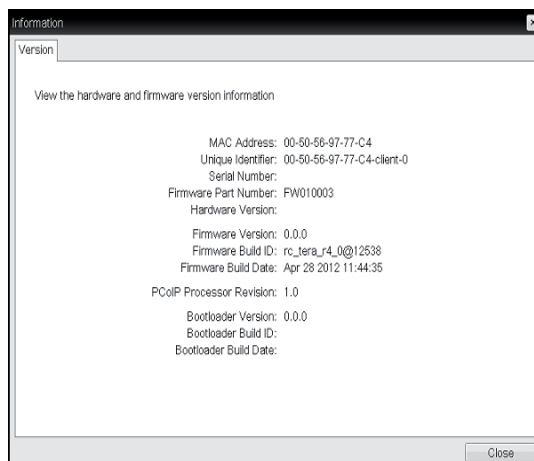
## Information Window

In the Information window, the administrator can access the Version tab that contains the device related information.



### NOTE

- The version information can also be viewed using the Webpage Administration Interface.



<Figure 2-34: Version>

### • VPD Information

The Vital Product Data (VPD) is information that uniquely identifies each portal or host.

- MAC Address  
The portal MAC address
- Unique Identifier  
The portal ID
- Serial Number  
The portal serial number
- Firmware Part Number  
The part number of the PCoIP firmware
- Hardware Version  
The portal hardware version

### • Firmware Information

The Firmware Information shows the details of the current PCoIP firmware.

- Firmware Version  
The current PCoIP firmware version
- Firmware Build ID  
The current PCoIP firmware revision code
- Firmware Build Date  
The current PCoIP firmware build date

### PCoIP Processor Revision

This shows the PCoIP processor's revision code. TERA1x00 Revision A silicone is denoted by 0.0 and TERA1x00 Revision B silicone is denoted by 1.0.

### • Boot Loader Information

The Boot Loader Information shows the details of the current PCoIP boot loader.

- Boot Loader Version  
The current PCoIP boot loader version
- Boot Loader Build ID  
The current PCoIP boot loader revision code
- Boot Loader Build Date  
The current PCoIP boot loader build date

## User Settings Window

In the User Settings window, the administrator can access the tab to select the mouse and keyboard and define the PCoIP image quality.

The User Settings window has the following tabs:

- VMware View
- Mouse
- Keyboard
- Image
- Display Topology
- Touch Screen

### • VMware View Tab

The VMware View tab allows user to specify the client behavior for when a user cannot check the secure connection to a server.



<Figure 2-35: VMware View>

- **Reject the unverifiable connection (Secure)**  
Connection can be established only when the certificate is verified and otherwise it cannot.
- **Warn if the connection may be insecure (Default)**

The authentication status is checked and a warning message is displayed, if required. However, there is no connection limit.

- **Allow the unverifiable connection (Not Secure)**

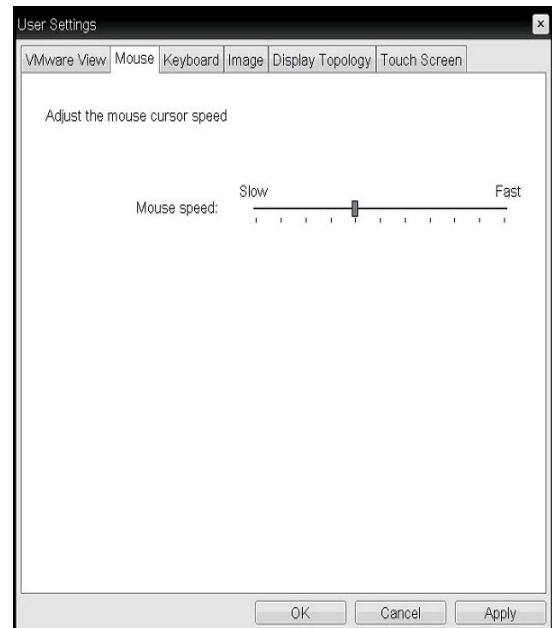
No authentication is required and no connection limit exists.

## Mouse Tab

The Mouse tab allows the user to modify the OSD and RDP session's mouse cursor speed setting.

### ! NOTE

- The OSD mouse cursor speed setting does not affect the mouse cursor settings when a PCoIP session is active unless the Local Keyboard Host Driver function is being used (see PCoIP Host Software User Guide for more information).
- The Mouse tab has no corresponding menu in the Webpage Administration Interface of Section 1.



<Figure 2-36: Mouse>

### • Mouse Speed

The Mouse Speed field allows the user to set the portal's mouse cursor speed.

### ! NOTE

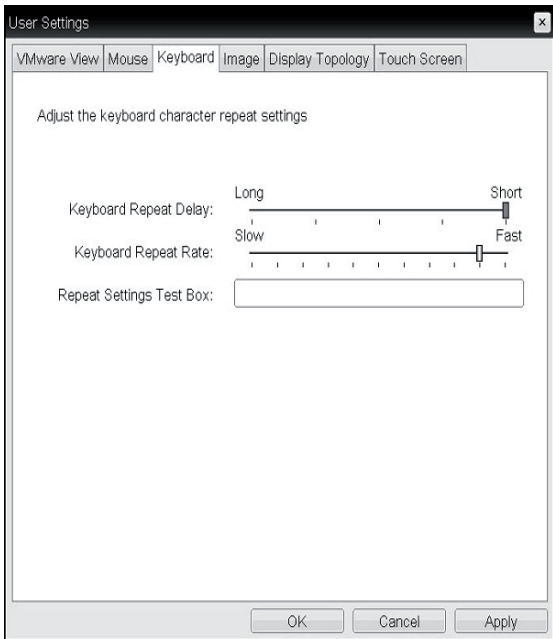
- The Mouse Speed can also be configured via the PCoIP Host Software. For more information on using the PCoIP Host Software, refer to the PCoIP Host Software User Guide.

### Keyboard Tab

The Keyboard tab allows the user to modify the OSD and RDP session's keyboard repeat setting.

#### NOTE

- The OSD keyboard setting does not affect the keyboard settings when a PCoIP session is active unless the Local Keyboard Host Driver function is being used (see PCoIP Host Software User Guide for more information).
- The Keyboard tab has no corresponding menu in the Webpage Administration Interface of Section 1.



<Figure 2-37: Keyboard>

#### • Keyboard Repeat Delay

The Keyboard Repeat Delay field allows the user to set the portal's keyboard repeat delay.

#### • Keyboard Repeat Rate

The Keyboard Repeat Rate field allows the user to set the portal's keyboard repeat rate.

#### • Repeat Settings Test Box

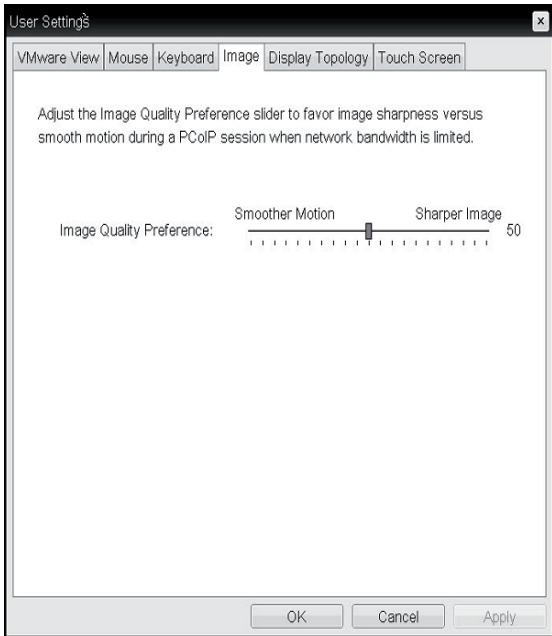
The Repeat Settings Test Box allows the user to test the selected keyboard settings.

### Image

The Image tab allows a user to change the image settings on the PCoIP system.

#### NOTE

- The Image parameters can also be configured using the Webpage Administration Interface.



<Figure 2-38: Image>

#### • Minimum Image Quality

The Minimum Image Quality slider allows the administrator to make compromises between image quality and frame rate when network bandwidth is limited. Sometimes, lower-quality images at a higher frame rate may be required, while at other times, higher-quality images at a lower frame rate may be preferred.

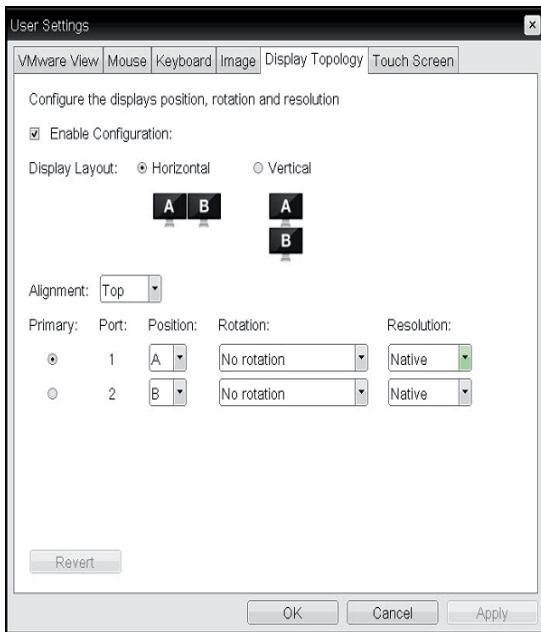
In environments where the network bandwidth is limited, moving the slider towards Reduced ensures higher frame rates; moving the slider towards Perception-Free ensures higher image quality. When network bandwidth is not limited, the PCoIP system will maintain perception-free quality regardless of the Minimum Image Quality setting.

### • Display Topology Tab

The Display Topology tab allows the user to specify the position and alignment of a connected secondary monitor.

#### ! NOTE

- It is applicable when the VMware View Connection Server version is 4.5 or later.



<Figure 2-39: Display Topology>

### • Enable Configuration

When this option is selected, you can set the display position and alignment. You can save the settings by clicking the Apply or OK button, and the settings will be reset if you initialize the monitor set.

### • Display Layout

This option allows the user to specify the direction of monitor connection: vertical or horizontal.

### • Alignment

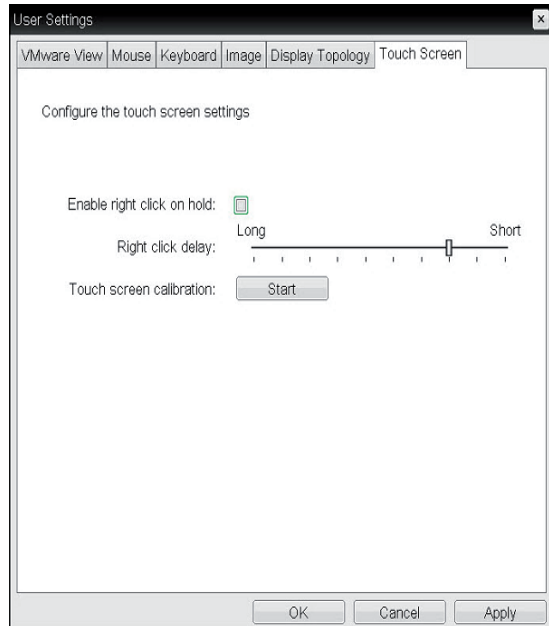
This option allows the user to specify the alignment position of the monitor to be connected when there is a resolution difference between the two monitors.

### • Primary

This option allows the user to change the primary/secondary settings of the connected monitor.

### • Touch Screen Tab

The Touch Screen tab allows the user to specify the touch sensitivity and alignment when the monitor supports the touch screen function.



<Figure 2-40: Touch Screen>

### • Enable right click on hold

If this option is selected, clicking and holding the touch screen for several seconds works the same as the mouse right click.

### • Right Click Delay

This option allows the user to make moving the pointer position work the same as the mouse right click. You can also specify the distance to move (from Long to Short).

### • Touch screen calibration

The alignment of a touch screen is started when clicking the Start button.



#### Declaration of Conformity

Trade Name: LG  
Model : 19CNV42KL  
Responsible Party: LG Electronics Inc.  
Address : 1000 Sylvan Ave. Englewood Cliffs  
NJ 07632 U.S.A  
TEL: 201-266-2534

\*above information is only for USA FCC Regulatory

Make sure to read the Safety Precautions before using the product.

Keep the Owner's Manual (CD) in an accessible place for future reference.

The model and serial number of the SET is located on the back and one side of the SET. Record it below should you ever need service.

MODEL \_\_\_\_\_

SERIAL \_\_\_\_\_

To obtain the source code under GPL, LGPL, MPL and other open source licenses, that is contained in this product, please visit <http://opensource.lge.com>.

In addition to the source code, all referred license terms, warranty disclaimers and copyright notices are available for download. LG Electronics will also provide open source code to you on CD-ROM for a charge covering the cost of performing such distribution (such as the cost of media, shipping and handling) upon email request to [opensource@lge.com](mailto:opensource@lge.com). This offer is valid for three (3) years from the date on which you purchased the product.

ENERGY STAR is a set of power-saving guidelines issued by the U.S.Environmental Protection Agency(EPA).



As an ENERGY STAR Partner LGE U. S. A.,Inc. has determined that this product meets the ENERGY STAR guidelines for energy efficiency.