

Before

After

URNS CURLS INTO SMOOTH HAIR IN SECONDS

TEMP. CONTROL	HAIR TYPE
Low 1-8	Delicate, thin, easy-to-straighten hair
Medium 9-14	Average to thick or treated hair
Med-High 15-20	Thick or wavy hair
High 21-25	Hard-to-straighten hair
Turbo Heat®	Up to 20° C/36° F burst of heat for difficult styling spots

TEMPERATURE SETTING GUIDE

Using Instant Heat, the 25 Variable Temperature Settings and Uniform Heat Recovery System

The 400°F high heat, uniform heat recovery system provides fast, professional salon styling results at home. This flat iron features Conair's Instant Heat technology. It quickly heats up to the temperature you've selected for your hair type and is then ready to use.

MEDIDAS DE SEGURIDAD IMPORTANTES

Siempre que use aparatos eléctricos, especialmente en la presencia de niños, debe tomar precauciones básicas de seguridad, entre las cuales las siguientes:

LEA TODAS LAS INSTRUCCIONES ANTES DE USARLO MANTÉNGALO ALEJADO DEL AGUA

1. **Siempre desconecte el aparato inmediatamente después de usarlo.**
2. No lo use en el baño o la ducha.
3. No coloque ni guarde este producto donde pueda caer o ser empujado a una bañera o un lavabo.
4. No coloque el aparato ni lo deje caer al agua u otro líquido.
5. Si el aparato cayera al agua, desconéctelo inmediatamente. **No toque el agua.**

ADVERTENCIA - Para reducir el riesgo de quemaduras, electrocución, incendio o heridas:

1. **Nunca deje el aparato desatendido mientras esté conectado.**

Ceramic technology is a pleasure to work with, makes styling your hair easier and provides professional results.

Strand of hair is set with the same level of heat for uniform results and a perfect finish.

A constant surge of power ensures that heat is continuously delivered for optimal styling results, unlike other units that lose heat during use. It provides consistent styling power so that every strand of hair is set with the same level of heat for uniform results and a perfect finish.

iron at a constant temperature.

standards of engineering provide you with a Uniform Heat Recovery System to maintain the flat

after it's straightened.

And that's not all. Conair's professional salon standards of engineering provide you with a Uniform Heat Recovery System to maintain the flat iron at a constant temperature.

STYLING WITH THE NEW EASY-GLIDE FLOATING CERAMIC-COATED PLATE

The plate of your new flat iron is designed with a little give, to "float" in your iron. This provides better contact with hair, eliminating gaps, for straighter results. The easy-glide ceramic surface is the one of the latest—and best—technological advances in hair appliances. The ceramic even heat distribution produces the ultimate in healthy, silky, shiny, healthy-looking hair. You'll find that hair glides easily over the surface of the plates as you're straightening, and that it is easier to clean styling products residue, etc. off the plates after each use. The ceramic surface also helps smooth down flyways and frizzes. As you smooth your hair, heat is evenly distributed so that the style you create has a salon-perfect, silky smooth, shiny finish. Hair also glides right through the plates after it's straightened.

advances in hair appliances. The ceramic even heat distribution produces the ultimate in healthy, silky, shiny, healthy-looking hair. You'll find that hair glides easily over the surface of the plates as you're straightening, and that it is easier to clean styling products residue, etc. off the plates after each use. The ceramic surface also helps smooth down flyways and frizzes. As you smooth your hair, heat is evenly distributed so that the style you create has a salon-perfect, silky smooth, shiny finish. Hair also glides right through the plates after it's straightened.

5. No utilice este aparato si el cordón o la clavija estuviesen dañados, después de que hubiese funcionado mal o que se hubiese caído o si estuviese dañado. **Regrese el aparato a un centro de servicio autorizado para su revisión y reparación.**

6. Mantenga el cable alejado de superficies calientes.

8. Nunca deje caer ni inserte ningún objeto en ninguna de las aberturas del aparato.

10. Este aparato se vuelve muy caliente. Mantenga los ojos y la piel alejados de las superficies calientes.

12. Nunca bloquee las aberturas de aire ni coloque el aparato en una superficie blanda, como una cama o un sofá, donde se puedan obstruir. Mantenga las aberturas libres de pelusas, cabellos y elementos similares.

11. **No coloque el aparato en ninguna superficie caliente o conectado.**

guide for heat settings.

for maximum styling performance.

a unique optional Turbo Heat® ON/OFF feature. Press the Turbo Heat® button to deliver up to 20°C/36°F more heat in the highest setting, for maximum styling performance.

and style your hair easily.

Some experience is necessary when learning to use this flat iron. After using the iron several times, you will learn the ideal way to straighten and style your hair easily.

WARNING: The flat iron's ceramic-coated plates will get very hot within a few seconds and should not be placed in contact with the skin after the flat iron has been turned on.

13. No utilice una extensión con este aparato.

14. No toque las partes calientes de este aparato. Utilice el mango y los botones o perillas.

15. Lea la información relativa al doble voltaje que se encuentra a continuación antes de enchufar el aparato.

16. El cuerpo del aparato cerca de las placas se vuelve muy caliente durante el uso. No lo toque.

INSTRUCCIONES DE OPERACION

Para uso doméstico solamente. Uselo solamente con Corriente Alterna de 120/240V (50/60 Hz). El cable de este aparato está dotado de una clavija polarizada (una pata es más ancha que otra). Como medida de seguridad, se podrá enchufar de una sola manera en la toma de corriente polarizada. Si no entrara en la toma de corriente, invértila. Si aún no entrara completamente, comuníquese con un electricista. No intente ir en contra de esta función de seguridad.

DOBLE VOLTAJE

Este aparato es bitemsión. Se adaptará automáticamente al voltaje adecuado. Puede que sea necesario emplear un adaptador de enchufe (no se incluye) para utilizarlo fuera de los Estados Unidos.

within 60 minutes.

turn off, press ON/OFF button again until red light goes out. Never leave your flat iron on and unattended. However, should you fail to turn the unit off, it will shut itself off automatically within 60 minutes.

press button and green light will go on and increase plate temperatures up to 20°C/36°F. To turn off, press ON/OFF button again until red light goes out. Never leave your flat iron on and unattended. However, should you fail to turn the unit off, it will shut itself off automatically within 60 minutes.

configuration prior to use in outlet.

this safety feature.

11. **Do not place the heated unit directly on any surface while it is hot or plugged in.**

12. Never block the air openings of the appliance or place on a soft surface such as a bed or couch, where the air openings may be blocked. Keep the air openings free of lint and other debris.

13. Do not use an extension cord with this appliance.

14. Do not touch hot surfaces of the appliance. Use handles or knobs.

15. Before plugging in, read the information about dual voltage contained in the instruction section of this manual.

16. Do not attempt to touch the housing of your appliance near the straightening plates, as it is hot when in use.

17. Do not operate with voltage converter.

within 60 minutes.

turn off, press ON/OFF button again until red light goes out. Never leave your flat iron on and unattended. However, should you fail to turn the unit off, it will shut itself off automatically within 60 minutes.

press button and green light will go on and increase plate temperatures up to 20°C/36°F. To turn off, press ON/OFF button again until red light goes out. Never leave your flat iron on and unattended. However, should you fail to turn the unit off, it will shut itself off automatically within 60 minutes.

configuration prior to use in outlet.

this safety feature.

11. **Do not place the heated unit directly on any surface while it is hot or plugged in.**

12. Never block the air openings of the appliance or place on a soft surface such as a bed or couch, where the air openings may be blocked. Keep the air openings free of lint and other debris.

13. Do not use an extension cord with this appliance.

14. Do not touch hot surfaces of the appliance. Use handles or knobs.

15. Before plugging in, read the information about dual voltage contained in the instruction section of this manual.

16. Do not attempt to touch the housing of your appliance near the straightening plates, as it is hot when in use.

17. Do not operate with voltage converter.

within 60 minutes.

turn off, press ON/OFF button again until red light goes out. Never leave your flat iron on and unattended. However, should you fail to turn the unit off, it will shut itself off automatically within 60 minutes.

press button and green light will go on and increase plate temperatures up to 20°C/36°F. To turn off, press ON/OFF button again until red light goes out. Never leave your flat iron on and unattended. However, should you fail to turn the unit off, it will shut itself off automatically within 60 minutes.

configuration prior to use in outlet.

this safety feature.

11. **Do not place the heated unit directly on any surface while it is hot or plugged in.**

12. Never block the air openings of the appliance or place on a soft surface such as a bed or couch, where the air openings may be blocked. Keep the air openings free of lint and other debris.

13. Do not use an extension cord with this appliance.

14. Do not touch hot surfaces of the appliance. Use handles or knobs.

15. Before plugging in, read the information about dual voltage contained in the instruction section of this manual.

16. Do not attempt to touch the housing of your appliance near the straightening plates, as it is hot when in use.

17. Do not operate with voltage converter.

OPERATING INSTRUCTIONS

SAVE THESE INSTRUCTIONS

This flat iron is intended for household use only. This unit is designed to operate at 120/240 volts AC. Use an Alternating Current (50/60/60 hertz) only. This appliance has a polarized plug (one blade is wider than the other). As a safety feature, this plug will fit in a polarized outlet only one way. If the plug does not fit fully in the outlet, reverse the plug, if it still does not fit, contact a qualified electrician. Do not attempt to defeat this safety feature.

11. **Do not place the heated unit directly on any surface while it is hot or plugged in.**

12. Never block the air openings of the appliance or place on a soft surface such as a bed or couch, where the air openings may be blocked. Keep the air openings free of lint and other debris.

13. Do not use an extension cord with this appliance.

14. Do not touch hot surfaces of the appliance. Use handles or knobs.

15. Before plugging in, read the information about dual voltage contained in the instruction section of this manual.

16. Do not attempt to touch the housing of your appliance near the straightening plates, as it is hot when in use.

17. Do not operate with voltage converter.

within 60 minutes.

turn off, press ON/OFF button again until red light goes out. Never leave your flat iron on and unattended. However, should you fail to turn the unit off, it will shut itself off automatically within 60 minutes.

press button and green light will go on and increase plate temperatures up to 20°C/36°F. To turn off, press ON/OFF button again until red light goes out. Never leave your flat iron on and unattended. However, should you fail to turn the unit off, it will shut itself off automatically within 60 minutes.

configuration prior to use in outlet.

this safety feature.

11. **Do not place the heated unit directly on any surface while it is hot or plugged in.**

12. Never block the air openings of the appliance or place on a soft surface such as a bed or couch, where the air openings may be blocked. Keep the air openings free of lint and other debris.

13. Do not use an extension cord with this appliance.

14. Do not touch hot surfaces of the appliance. Use handles or knobs.

guide for heat settings.

for maximum styling performance.

a unique optional Turbo Heat® ON/OFF feature. Press the Turbo Heat® button to deliver up to 20°C/36°F more heat in the highest setting, for maximum styling performance.

and style your hair easily.

Some experience is necessary when learning to use this flat iron. After using the iron several times, you will learn the ideal way to straighten and style your hair easily.

WARNING: The flat iron's ceramic-coated plates will get very hot within a few seconds and should not be placed in contact with the skin after the flat iron has been turned on.

13. No utilice una extensión con este aparato.

14. No toque las partes calientes de este aparato. Utilice el mango y los botones o perillas.

15. Lea la información relativa al doble voltaje que se encuentra a continuación antes de enchufar el aparato.

16. El cuerpo del aparato cerca de las placas se vuelve muy caliente durante el uso. No lo toque.

6. Mantenga el cable alejado de superficies calientes.

8. Nunca deje caer ni inserte ningún objeto en ninguna de las aberturas del aparato.

10. Este aparato se vuelve muy caliente. Mantenga los ojos y la piel alejados de las superficies calientes.

12. Nunca bloquee las aberturas de aire ni coloque el aparato en una superficie blanda, como una cama o un sofá, donde se puedan obstruir. Mantenga las aberturas libres de pelusas, cabellos y elementos similares.

11. **No coloque el aparato en ninguna superficie caliente o conectado.**

within 60 minutes.

turn off, press ON/OFF button again until red light goes out. Never leave your flat iron on and unattended. However, should you fail to turn the unit off, it will shut itself off automatically within 60 minutes.

press button and green light will go on and increase plate temperatures up to 20°C/36°F. To turn off, press ON/OFF button again until red light goes out. Never leave your flat iron on and unattended. However, should you fail to turn the unit off, it will shut itself off automatically within 60 minutes.

configuration prior to use in outlet.

this safety feature.

11. **Do not place the heated unit directly on any surface while it is hot or plugged in.**

12. Never block the air openings of the appliance or place on a soft surface such as a bed or couch, where the air openings may be blocked. Keep the air openings free of lint and other debris.

13. Do not use an extension cord with this appliance.

14. Do not touch hot surfaces of the appliance. Use handles or knobs.

15. Before plugging in, read the information about dual voltage contained in the instruction section of this manual.

16. Do not attempt to touch the housing of your appliance near the straightening plates, as it is hot when in use.

17. Do not operate with voltage converter.

within 60 minutes.

turn off, press ON/OFF button again until red light goes out. Never leave your flat iron on and unattended. However, should you fail to turn the unit off, it will shut itself off automatically within 60 minutes.

press button and green light will go on and increase plate temperatures up to 20°C/36°F. To turn off, press ON/OFF button again until red light goes out. Never leave your flat iron on and unattended. However, should you fail to turn the unit off, it will shut itself off automatically within 60 minutes.

configuration prior to use in outlet.

this safety feature.

11. **Do not place the heated unit directly on any surface while it is hot or plugged in.**

12. Never block the air openings of the appliance or place on a soft surface such as a bed or couch, where the air openings may be blocked. Keep the air openings free of lint and other debris.

13. Do not use an extension cord with this appliance.

14. Do not touch hot surfaces of the appliance. Use handles or knobs.

15. Before plugging in, read the information about dual voltage contained in the instruction section of this manual.

16. Do not attempt to touch the housing of your appliance near the straightening plates, as it is hot when in use.

17. Do not operate with voltage converter.

within 60 minutes.

turn off, press ON/OFF button again until red light goes out. Never leave your flat iron on and unattended. However, should you fail to turn the unit off, it will shut itself off automatically within 60 minutes.

press button and green light will go on and increase plate temperatures up to 20°C/36°F. To turn off, press ON/OFF button again until red light goes out. Never leave your flat iron on and unattended. However, should you fail to turn the unit off, it will shut itself off automatically within 60 minutes.

configuration prior to use in outlet.

this safety feature.

11. **Do not place the heated unit directly on any surface while it is hot or plugged in.**

12. Never block the air openings of the appliance or place on a soft surface such as a bed or couch, where the air openings may be blocked. Keep the air openings free of lint and other debris.

13. Do not use an extension cord with this appliance.

14. Do not touch hot surfaces of the appliance. Use handles or knobs.

15. Before plugging in, read the information about dual voltage contained in the instruction section of this manual.

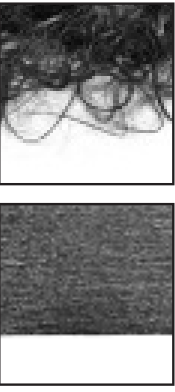
16. Do not attempt to touch the housing of your appliance near the straightening plates, as it is hot when in use.

17. Do not operate with voltage converter.

GUÍA DE TEMPERATURA

AJUSTE DE TEMPERATURA	TIPO DE CABELLO
Bajo 1-8	Cabello delicado, fino o débil
Medio 9-14	Cabello normal a grueso o tratado
Medio-Alto 15-20	Cabello grueso u ondulado
Alto 21-25	Cabello resistente
Turbo Heat®	Aumenta la temperatura en 20° C (36° F) para lograr resultados más rápidos

ALISADOS PERFECTOS, EN SEGUNDOS



Antes

Después



CONAIR®

Instruction & Styling Guide
Model CS4VCSR/CS19VCSR

For your safety and continued enjoyment of this product, always read the instruction book carefully before using.

Please register this product at:
www.conair.com/registration

Service Center
Conair Corporation
Service Department
7475 N. Glen Harbor Blvd.
Glendale, AZ 85307

For information on any Conair product, call 1-800-3-CONAIR or visit us on the web at www.conair.com

©2014 Conair Corporation
150 Milford Road, East Windsor, NJ 08520
7475 N. Glen Harbor Blvd., Glendale, AZ 85307

14PA007541

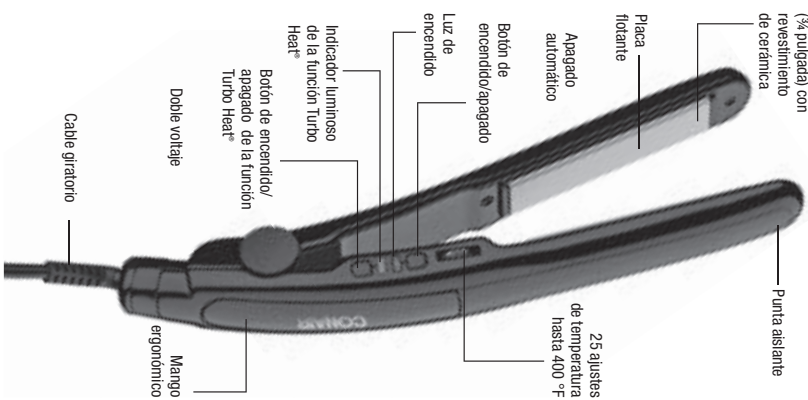
IB-11065A

3/4 in. & 2 in. ceramic flat irons

FAMILIARÍCESE CON SU PLANCHA ALISADORA

Modelo CS4VCSR

Placas de 19 mm
(¾ pulgada) con
revestimiento
de cerámica



INSTRUCCIONES DE MANTENIMIENTO

Su aparato requiere poco mantenimiento. No necesita lubricación. Mantenga todas las aberturas libres de polvos y pelusas. Cuando sea necesario limpiarlo, desenchúfelo, permita que enfríe y limpie la superficie exterior con un paño humedecido. En caso de mal funcionamiento, desconecte el aparato, permita que enfríe y regréselo a un centro de servicio autorizado. No trate de repararlo.

PRECAUCIÓN

NUNCA jale, retuerza ni doble mucho el cable. Nunca lo enrolle con fuerza alrededor del aparato. Esto podría dañar la junta flexible que lo conecta al aparato, produciendo su ruptura o un cortocircuito. Revise el cable con frecuencia para asegurarse de que no esté dañado. Deje de usar el aparato inmediatamente si el cable parece dañado o si el aparato dejara de funcionar o funcionara de manera intermitente.

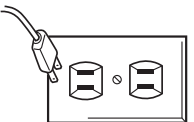
ALMACENAJE

Cuando no lo utiliza, su aparato es fácil de almacenar. Permita que enfríe y guárdelo en un

lugar seco y seguro, fuera del alcance de los niños. No tronee ni retuerza el cable al nivel del enchufe.

ADVERTENCIA: SI CREE QUE NO HAY CORRIENTE CUANDO EL APARATO ESTÁ APAGADO, ESTÁ EQUIVOCADO

MANTÉNGALO ALEJADO DEL AGUA

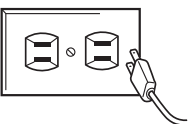


Todos sabemos que no se debe mezclar la electricidad y el agua. Pero ¿Sabe usted que un aparato eléctrico permanece bajo tensión aunque esté apagado? Si está conectado, hay aparatos eléctricos después de usarnos.

SIEMPRE DESENCHUFE LOS APARATOS PEQUEÑOS

ALWAYS UNPLUG SMALL APPLIANCES

Everyone knows that electricity and water are a dangerous combination. But did you know that an electric appliance is still electrically live even if the switch is off? If the plug is in, the power is on. So when you are not using your appliances, keep them unplugged.



KEEP AWAY FROM WATER

WARNING: IF YOU THINK THE POWER IS OFF WHEN THE SWITCH IS OFF, YOU'RE WRONG.

GARANTÍA LIMITADA DE DOS AÑOS

Conair reparará o reemplazará (a su opción) su aparato sin cargo por un período de 24 meses a partir de la fecha de compra si presentara defectos de materiales o fabricación.

Para obtener servicio técnico bajo esta garantía, registre su aparato al Centro de Servicio Indicado al dorso, junto con su recibo de compra y un cheque o giro postal de US\$7.50 por gastos de manejo y envío. Los residentes de California solo necesitan dar una prueba de compra y deben llamar al 1-800-3-CONAIR para recibir instrucciones de envío. En ausencia del recibo de compra, el período de garantía será de 24 meses a partir de la fecha de fabricación.

CUALQUIER GARANTÍA, OBLIGACIÓN O RESPONSABILIDAD IMPLÍCITAS, INCLUYENDO PERO NO LIMITADAS A LA GARANTÍA IMPLÍCITA DE COMERCIABILIDAD Y APTITUD PARA UN PROPÓSITO ESPECÍFICO, ESTARÁN LIMITADAS POR LOS 24 MESES DE LA PRESENTE GARANTÍA ESCRITA. Algunos Estados no permiten limitaciones sobre la duración de una garantía implícita, de modo que las limitaciones mencionadas pueden no regir para usted.

CONAIR NO SERÁ RESPONSABLE, EN NINGÚN CASO, POR NINGÚN DAÑO ESPECIAL, INCIDENTAL O CONSECUENTE DEBIDO AL INCUMPLIMIENTO DE ESTA O CUALQUIERA OTRA GARANTÍA, EXPRESA O IMPLÍCITA. Algunos Estados no permiten la exclusión o limitación de daños especiales, incidentales o consecuentes, de modo que las limitaciones mencionadas pueden no regir para usted. Esta garantía le otorga derechos legales específicos y usted puede tener otros derechos que varían de un Estado a otro.

When not in use, your appliance is easy to store. Allow appliance to cool, then store in a safe, dry location, out of reach of children. Do not jerk or strain cord at plug connections.

STORAGE

When not in use, your appliance is easy to store. Allow appliance to cool, then store in a safe, dry location, out of reach of children. Do not jerk or strain cord at plug connections.

NEVER allow the power supply cord to be pulled, twisted, or severely bent. Never wrap the cord tightly around the appliance. Damage will occur at the high flex point of entry into the appliance, causing it to rupture and short. Inspect the cord frequently for damage. Stop use immediately if damage is visible or if unit stops or operates intermittently.

CAUTION

NEVER allow the power supply cord to be pulled, twisted, or severely bent. Never wrap the cord tightly around the appliance. Damage will occur at the high flex point of entry into the appliance, causing it to rupture and short. Inspect the cord frequently for damage. Stop use immediately if damage is visible or if unit stops or operates intermittently.

USER MAINTENANCE

Your flat iron is virtually maintenance free. No lubrication is needed. Keep all vents and openings clear of dirt and dust. If cleaning becomes necessary, disconnect the unit from the power source, allow to cool and wipe exterior with a cloth. If any abnormal condition occurs, unplug the unit, allow it to cool, and return it for repair to an authorized service representative only. No repairs should be attempted by the consumer.



GET TO KNOW YOUR CERAMIC FLAT IRON



planchas alisadoras cerámicas 19 mm & 51 mm

Para su seguridad y para distribuir plenamente de este producto, siempre lea las instrucciones cuidadosamente antes de usarlo.

CONAIR®

Instrucciones

Modelo CS4VCSR/CS19VCSR

14PA007541

IB-11065A