

# CRAFTSMAN®

Product questions or problems?

## 1-888-331-4569

### Customer Care Hot Line

Get answers to questions, troubleshoot problems,  
order parts, or schedule repair service.

Para respuestas a preguntas o problemas, y ordenar  
piezas o pedir servicio para la reparación de su equipo.

To help us help you, register your product at [www.craftsman.com/registration](http://www.craftsman.com/registration)

Para poderte ayudar mejor, registra tu producto en [www.craftsman.com/registration](http://www.craftsman.com/registration)

Join the Craftsman Club today!

## CRAFTSMAN CLUB®

[www.craftsman.com/signup](http://www.craftsman.com/signup)

Receive exclusive member benefits including special pricing and offers,  
project sharing, expert advice, and SHOP YOUR WAY REWARDS!

Como miembro exclusivo, recibe diversos beneficios como ofertas, precios especiales, proyectos  
nuevos, consejos de expertos y nuestro programa de puntos SHOP YOUR WAY REWARDS!

© Registered Trademark / ™ Trademark of KCD IP, LLC in the United States, or Sears Brands, LLC in other countries  
© Marca Registrada / ™ Marca de Fábrica de KCD IP, LLC en Estados Unidos, o Sears Brands, LLC in otros países

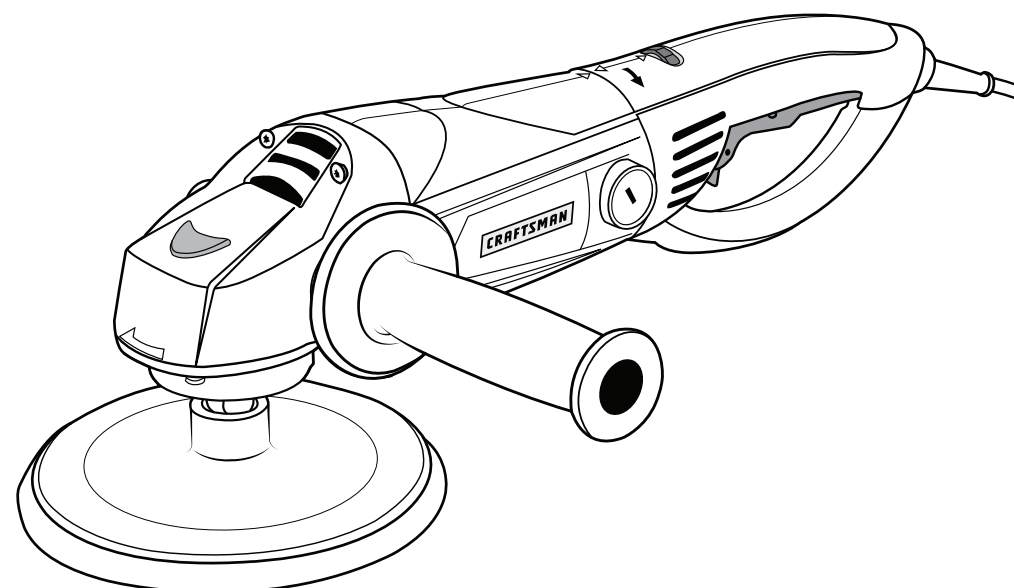
## Owner's Manual

# CRAFTSMAN®

## 7-in. Polisher

Model No.

172.395560



Intertek  
3025736

Double  
Insulated



**CAUTION:** Read, understand and follow  
all Safety Rules and Operating Instructions  
in this manual before using this product.

Sears Brands Management Corporation,  
Hoffman Estates, IL 60179 U.S.A.  
[www.craftsman.com](http://www.craftsman.com)

- WARRANTY
- SAFETY
- ASSEMBLY
- OPERATION
- MAINTENANCE
- PARTS LIST
- ESPAÑOL

## TABLE OF CONTENTS

Warranty.....	Page 1
Safety Symbols.....	Page 2
Safety Instructions.....	Pages 3-8
Unpacking / Accesories.....	Page 9
Description.....	Page 10
Operation.....	Pages 11-14
Maintenance.....	Pages 14-15
Parts List.....	Pages 16-17

### CRAFTSMAN LIMITED WARRANTY

FOR ONE YEAR from the date of sale this product is warranted against defects in material or workmanship.

WITH PROOF OF SALE a defective product will be replaced free of charge.

For warranty coverage details to obtain free replacement, visit the web page: [www.craftsman.com/warranty](http://www.craftsman.com/warranty)

This warranty does not cover the bonnets or brushes, which are expendable parts that can wear out from normal use within the warranty period.

This ONE YEAR warranty is void if this product is ever used while providing commercial services or if rented to another person. For 90 DAY commercial and rental use terms, see the Craftsman warranty web page.

This warranty gives you specific legal rights, and you may also have other rights which vary from state to state.

Sears Brands Management Corporation, Hoffman Estates, IL 60179

## SAVE THESE INSTRUCTIONS! READ ALL INSTRUCTIONS!

**⚠ WARNING:** Some dust created by power sanding, sawing, grinding, drilling and other construction activities contains chemicals known to the state of California to cause cancer, birth defects or other reproductive harm.

Some examples of these chemicals are:

- Lead from lead-based paints;
- Crystalline silica from bricks and cement and other masonry products and
- Arsenic and chromium from chemically-treated lumber.

Your risk from these exposures varies, depending on how often you do this type of work. To reduce your exposure to these chemical: work in a well ventilated area, and work with approved safety equipment, such as those dust masks that are specially designed to filter out microscopic particles.

**⚠ WARNING:** This product maybe contains lead, phthalate or other chemicals known to the State of California to cause cancer, birth defects and other reproductive harm. Please wash your hands after use.

## SAFETY SYMBOLS

The purpose of safety symbols is to attract your attention to possible dangers. The safety symbols and the explanations with them deserve your careful attention and understanding. The symbol warnings do not, by themselves, eliminate any danger. The instructions and warnings they give are no substitutes for proper accident prevention measures.

**⚠ WARNING:** Be sure to read and understand all safety instructions in this manual, including all safety alert symbols such as “**DANGER**,” “**WARNING**,” and “**CAUTION**” before using this buffer/polisher. Failure to follow all instructions listed in this manual may result in electric shock, fire and/or serious personal injury.

### SYMBOL SIGNAL MEANING

**⚠ SAFETY ALERT SYMBOL:** Indicates **DANGER, WARNING, OR CAUTION.** May be used in conjunction with other symbols or pictographs.

**⚠ DANGER:** Indicates a hazardous situation which, if not avoided, will result in death or serious injury. This signal word is to be limited to the most extreme situations. Always follow the safety precautions to reduce the risk of fire, electric shock, and personal injury.

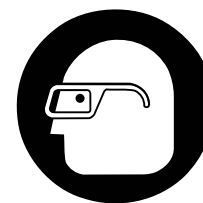
**⚠ WARNING:** Indicates a hazardous situation which, if not avoided, could result in death or serious injury. Always follow the safety precautions to reduce the risk of fire, electric shock, and personal injury.

**⚠ CAUTION:** Indicates a hazardous situation which, if not avoided, could result in minor or moderate injury.

### Damage Prevention and Information Messages

These inform the user of important information and/or instructions that could lead to equipment or other property damage if they are not followed. Each message is preceded by the word “NOTE,” as in the example below:

**NOTE:** Equipment and/or property damage may result if these instructions are not followed.



**⚠ WARNING:** To ensure safety and reliability, all repairs should be performed by a qualified service technician.

**⚠ WARNING:** The operation of any power tools can result in foreign objects being thrown into your eyes, which can result in severe eye damage. Before beginning power tool operation, always wear safety goggles or safety glasses with side shield and a full face shield when needed. We recommend a Wide

Vision Safety Mask for use over eyeglasses or standard safety glasses with side shields. Always use eye protection which is marked to comply with ANSI Z87.1 shields.

## SAFETY INSTRUCTIONS

**⚠ WARNING: This power tool is intended to function as a POLISHER. Read all safety warnings, instructions, illustrations and specifications provided with this power tool. Failure to follow all instructions listed below may result in electric shock, fire and/or serious injury.**

1. Operations such as grinding, sanding, wire brushing, or cutting-off are not recommended to be performed with this power tool. Operations for which the polisher was not designed may create a hazard and cause personal injury.
2. Do not use accessories which are not specifically designed and recommended by the tool manufacturer. Just because the accessory can be attached to your polisher, it does not assure safe operation.
3. The rated speed of the accessory must be at least equal to the maximum speed marked on the polisher. Accessories running faster than their rated speed can break and fly apart.
4. The outside diameter and the thickness of your accessory must be within the capacity rating of your power tool. Incorrectly sized accessories cannot be adequately guarded or controlled.
5. The arbor size of wheels, flanges, backing pads or any other accessory must properly fit the spindle of the polisher. Accessories with arbor holes that do not match the mounting hardware of the polisher will run out of balance, vibrate excessively and may cause loss of control.
6. Do not use a damaged Foam Pad or Bonnet accessory. Before each use, inspect the accessory such as the Foam Pad, Bonnet and Backing Pad for cracks, tear or excess wear. If polisher or accessory is dropped, inspect for damage or install an undamaged accessory. After inspecting and installing an accessory, position yourself and bystanders away from the plane of the rotating accessory and run the power tool at maximum no-load speed for one minute. Damaged accessories will normally break apart during this test time.
7. Do not run the power tool while carrying it at your side. Accidental contact with the spinning accessory could snag your clothing, pulling the accessory into your body.
8. Do not operate the power tool near flammable materials. Sparks could ignite these materials.

### KICKBACK AND RELATED WARNINGS

**Kickback is a sudden reaction** to a pinched or snagged rotating wheel, backing pad, brush or any other accessory. Pinching or snagging causes rapid stalling of the rotating accessory which in turn causes the uncontrolled power tool to be forced in the direction opposite of the accessory's rotation at the point of the binding.

**Kickback** is the result of power tool misuse and/or incorrect operating procedures or conditions and can be avoided by taking proper precautions as given below.

1. Maintain a firm grip on the power tool and position your body and arm to allow you to resist kickback forces. Always use auxiliary handle, if provided, for maximum control over kickback or torque reaction during start-up. The operator can control torque reactions or kickback forces, if proper precautions are taken.
2. Never place your hand near the rotating accessory. Accessory may kickback over your hand.

## SAFETY INSTRUCTIONS cont.

3. Do not position your body in the area where power tool will move if kickback occurs. Kickback will propel the tool in direction opposite to the wheel's movement at the point of snagging.
4. Use special care when working corners, sharp edges etc. Avoid bouncing and snagging the accessory. Corners, sharp edges or bouncing have a tendency to snag the rotating accessory and cause loss of control or kickback.

**⚠ WARNING: Read all safety warnings and instructions. Failure to follow the warnings and instructions may result in electric shock, fire and/or serious injury.**

### Save all warnings and instructions for future reference.

The term power tool in the warnings refers to your electric (corded) power tool or battery-operated (cordless) power tool.

### WORK AREA SAFETY

1. **Keep work area clean and well lit.** Cluttered or dark areas invite accidents.
2. **Do not operate power tools in explosive atmospheres, such as in the presence of flammable liquids, gases or dust.** Power tools create sparks which may ignite the dust or fumes.
3. **Keep children and bystanders away while operating a power tool.** Distractions can cause you to lose control.
4. **Make your workshop childproof** with padlocks and master switches. Lock tools away when not in use.
5. **MAKE SURE the work area has ample lighting** so you can see the work and that there are no obstructions that will interfere with safe operation **BEFORE** using your power tool.

### PERSONAL SAFETY

1. **Stay alert, watch what you are doing and use common sense when operating a power tool. Do not use a power tool while you are tired or under the influence of drugs, alcohol or medication.** A moment of inattention while operating power tools may result in serious personal injury.
2. **Use personal protective equipment. Always wear eye protection.** Protective equipment such as dust mask, non-skid safety shoes, hard hat, or hearing protection used for appropriate conditions will reduce personal injuries.
3. **Prevent unintentional starting. Ensure the switch is in the off-position before connecting to power source and/or battery pack, picking up or carrying the tool.** Carrying power tools with your finger on the switch or energizing power tools that have the switch on invites accidents.
4. **Remove any adjusting key or wrench before turning the power tool on.** A wrench or a key left attached to a rotating part of the power tool may result in personal injury.
5. **Do not overreach. Keep proper footing and balance at all times.** This enables better control of the power tool in unexpected situations.
6. **Dress properly. Do not wear loose clothing or jewelry. Keep your hair, clothing and gloves away from moving parts.** Loose clothes, jewelry or long hair can be caught in moving parts.
7. **If devices are provided for the connection of dust extraction and collection facilities, ensure these are connected and properly used.** Use of dust collection can reduce dust-related hazards.

## SAFETY INSTRUCTIONS cont.

### POWER TOOL USE AND CARE

1. **Do not force the power tool. Use the correct power tool for your application.**  
The correct power tool will do the job better and safer at the rate for which it was designed.
2. **Do not use the power tool if the switch does not turn it on and off.** Any power tool that cannot be controlled with the switch is dangerous and must be repaired.
3. **Disconnect the plug from the power source and/or the battery pack from the power tool before making any adjustments, changing accessories, or storing power tools.** Such preventive safety measures reduce the risk of starting the power tool accidentally.
4. **Store idle power tools out of the reach of children and do not allow persons unfamiliar with the power tool or these instructions to operate the power tool.** Power tools are dangerous in the hands of untrained users.
5. **Maintain power tools. Check for misalignment or binding of moving parts, breakage of parts and any other condition that may affect the power tools operation. If damaged, have the power tool repaired before use.** Many accidents are caused by poorly maintained power tools.
6. **Keep cutting tools sharp and clean.** Properly maintained cutting tools with sharp cutting edges are less likely to bind and are easier to control.
7. **Use the power tool, accessories and tool bits etc., in accordance with these instructions and in the manner intended for the particular type of power tool, taking into account the working conditions and the work to be performed.**  
Use of the power tool for operations different from those intended could result in a hazardous situation.
8. **Use clamps or another practical way to secure and support the workpiece to a stable platform.**

### ELECTRICAL SAFETY

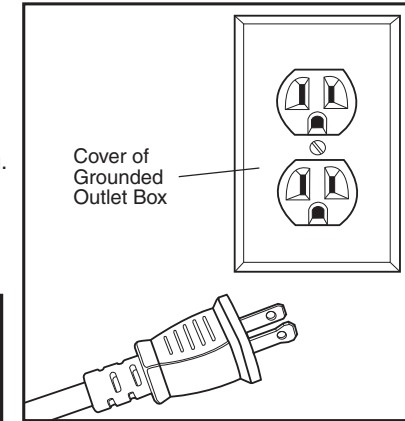
1. **Power tool plugs must match the outlet. Never modify the plug in any way. Do not use any adapter plugs with grounded power tools.** Unmodified plugs and matching outlets will reduce risk of electric shock.
2. **Avoid body contact with grounded surfaces such as pipes, radiators, ranges and refrigerators.** There is an increased risk of electric shock if your body is grounded.
3. **Do not expose power tools to rain or wet conditions.** Water entering a power tool will increase the risk of electric shock.
4. **Do not abuse the cord. Never use the cord for carrying, pulling or unplugging the power tool. Keep cord away from heat, oil, sharp edges or moving parts.** Damaged or entangled cords increase the risk of electric shock.
5. **When operating a power tool outdoors, use an extension cord suitable for outdoor use marked "W-A" or "W".** Use of a cord suitable for outdoor use reduces the risk of electric shock.
6. **If operating a power tool in a damp location is unavoidable, use a Ground Fault Circuit Interrupter (GFCI) protected supply.** Use of a GFCI reduces the risk of electric shock.

## SAFETY INSTRUCTIONS cont.

### ELECTRICAL SAFETY cont.

7. **Double insulated tools are equipped with a polarized plug (one blade is wider than the other). This plug will fit in a polarized outlet only one way.** If the plug does not fit fully in the outlet, reverse the plug. If it still does not fit, contact a **qualified electrician** to install a polarized outlet. Do not change the plug in any way.

**⚠ WARNING:** Do not permit fingers to touch the terminals of plug when installing or removing the plug from the outlet.



### EXTENSION CORDS

**USE PROPER EXTENSION CORD.** Make sure your extension cord is in good condition. When using an extension cord, be sure to use one heavy enough to carry the current your product will draw. An undersized cord will cause a drop in line voltage resulting in loss of power and overheating. Table 1 shows the correct size to use depending on cord length and nameplate ampere rating. If in doubt, use the next heavier gage. The smaller the gage number, the heavier the cord.

Table 1: Minimum Gage for Cord

Rating		Volts	Total cord length (in feet)			
Ampere		120V	25	50	100	150
More Than	Not More Than	AWG				
0	6		18	16	16	14
6	10		18	16	14	12
10	12		16	16	14	12
12	16		14	12	Not recommended	

**⚠ CAUTION:** Keep the extension cord clear of the working area. Position the cord so that it will not get caught on lumber, tools, parts of the vehicle or other obstructions while you are working with a power tool.

**⚠ WARNING:** Check extension cords before each use. If damaged replace immediately. Never use tool with a damaged cord since touching the damaged area could cause electrical shock, resulting in serious injury.



## SAFETY INSTRUCTIONS cont.

### SERVICE SAFETY

1. If any part of this tool is missing or should break, bend, or fail in any way; or should any electrical component fail to perform properly: **SHUT OFF** the power switch and remove the tool's plug from the power source and have the missing, damaged or failed parts replaced **BEFORE** resuming operation.
2. **Have your power tool serviced by a qualified repair person using only identical replacement parts.** This will ensure that the safety of the power tool is maintained.
3. **If the replacement of the supply cord is necessary, this has to be done by the manufacturer or his agent in order to avoid a safety hazard.**

### SAFETY RULES FOR POLISHERS

**⚠ WARNING: USE OF ACCESSORIES THAT ARE NOT RECOMMENDED FOR USE WITH THIS TOOL MAY CREATE A HAZARDOUS CONDITION.**

1. Read, understand and follow all safety rules and user instructions in this manual and all directions and warnings on polishes and waxes **BEFORE** using this polisher.
2. Vehicle should be clean and dry before using your buffer polisher. Remove all road tar, excess grease spots and bug stains.
3. **ALWAYS** make sure the vehicle's surface is cool before washing and using the polisher.
4. When changing accessories, **BE SURE** that the switch is in the **OFF** position and the cord is unplugged.
5. **DO NOT apply wax directly on car.**
6. To avoid splashing wax, **ALWAYS** start and stop the polisher on or against the surface to be polished.
7. After plugging in extension cord, loop extension cord/plug over tool's cord/plug. Tie tool cord around extension cord into a loose knot, to secure it in place (see Fig. A on page 12 for example). Connect tool plug into extension cord end.
8. Place extension cord over your shoulder to keep it safely out of your way.
9. **DO NOT** apply excessive pressure against the work surface with this tool. Applying excessive pressure could burn or damage the paint surface.
10. To prolong the life of the pad on the polisher, **ALWAYS** store the polisher with the pad face up.
11. **DO NOT USE ABRASIVE COMPOUNDS WITH THIS TOOL.**
12. **DO NOT** immerse any part of the polisher in liquid.

**⚠ WARNING: Use of this tool can generate and/or disburse dust, which may cause serious and permanent respiratory or other injury. Always use NIOSH/OSHA approved respiratory protection appropriate for the dust exposure. Direct particles away from face and body.**

## SAFETY INSTRUCTIONS cont.

### ADDITIONAL RULES FOR SAFE OPERATION

**⚠ WARNING: BE SURE to read and understand all instructions. Failure to follow all instructions listed below may result in electric shock, fire and/or serious personal injury.**

1. Inspect the pad before use. Do not use chipped, cracked or otherwise defective products.
2. Ensure that the foam pad is fitted in accordance with the manufacturer's instructions.
3. Ensure that the foam pad is correctly mounted to the velcro pads before use and run the tool at no-load speed for 30 seconds in a safe position. Stop immediately if there is considerable vibration or if other defects are detected. If this condition occurs, check the machine to determine the cause.
4. For protection, personal protective equipment such as gloves and apron should be worn.
5. The pad wheel continues to rotate after the tool is switched off. Only remove the foam pad when the pad has stopped moving.
6. Do not use the polisher as a fixed tool.
7. **SAVE THESE INSTRUCTIONS. Refer to them frequently and use them to instruct others who may use this tool. If someone borrows this tool, make sure they have these instructions also.**

### SAFETY SYMBOLS FOR YOUR TOOL

The label on your tool may include the following symbols.

V.....	Volts
A.....	Amps
Hz.....	Hertz
W.....	Watts
min.....	Minutes
~.....	Alternating current
—.....	Direct current
n <sub>o</sub> .....	No-load speed
□.....	Class II construction, Double Insulated
RPM.....	Revolutions per minute
SPM.....	Strokes per minute
OPM.....	Orbits per minute
⚠.....	Indicates danger, warning or caution.
👁.....	It means attention! Your safety is involved.
👁.....	Wear eye protection
👤.....	Wear dust mask

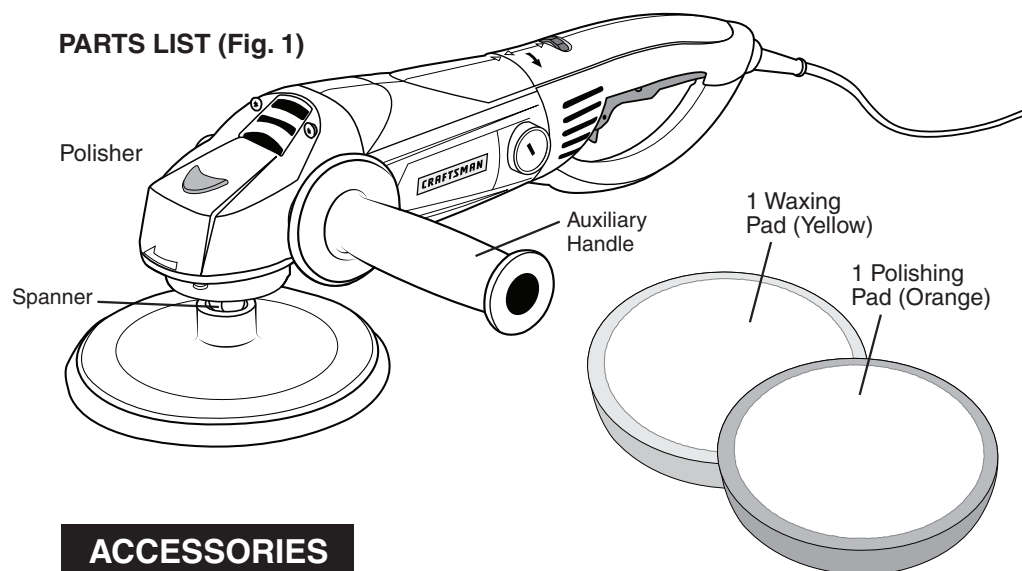
## UNPACKING

**⚠ WARNING:** Your tool should **NEVER** be connected to the power source when you are assembling parts, making adjustments, installing or removing bonnets, cleaning or when it is not in use. Disconnecting the tool will prevent accidental starting, which could cause serious personal injury.

1. Remove the polisher from the carton and inspect it carefully to make sure that no breakage or damage has occurred during shipping.
2. Do not discard any of the packing materials until all parts are accounted for.
3. Two 8-in. foam pads are included: One yellow foam pad for waxing and one orange foam pad for polishing. Pads measure approximately 8-in., intended for use on included 7-in. backer pad.
4. If any of the parts are damaged or missing (refer to PARTS LIST below), return the polisher to your nearest Craftsman outlet to have the tool replaced.

**⚠ WARNING:** If any parts are missing, **DO NOT** operate this polisher until the missing parts are replaced. Failure to do so could result in possible serious personal injury.

### PARTS LIST (Fig. 1)



## ACCESSORIES

**⚠ WARNING:** The use of attachments or accessories that are not recommended for this tool might be dangerous and could result in serious injury.

**Look for these Craftsman or other brand-name accessories.** They are specially designed to make your 7-in. Polisher more efficient to use.

**Foam Pads** for applying waxes and polishes.

**Wax Applicator Bonnets** for applying waxes and polishes.

**Terry Cloth Bonnets** for removing wax and for buffing and polishing.

**Wool Bonnets** for applying or removing wax and for buffing and polishing.

Visit your local Craftsman outlet or shop [craftsman.com](http://craftsman.com) for all of the accessories for your buffer / polisher.

## DESCRIPTION

### KNOW YOUR POLISHER

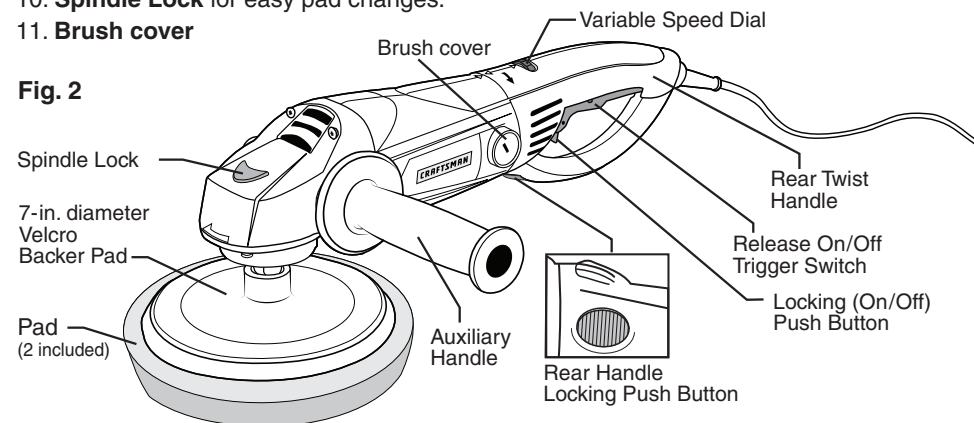
**NOTE:** Before attempting to use your polisher, familiarize yourself with all of the operating features and safety requirements.

Connect to a 120-volt, 60-Hz AC **ONLY** power supply (normal household current). **DO NOT** operate on direct current (DC). The large voltage drop will cause a loss of power and the motor will overheat. If the tool does not operate when plugged into correct 120-volt, 60-Hz AC **ONLY** outlet, check the power supply. This polisher has a stub length, 2-wire power cord (no adapter needed).

**This Craftsman Polisher has the following features:**

1. **Powerful 10 Amp permanent magnet Motor with 800-3000 Orbits per Minute** (No-Load Speed) provides the power needed for quality waxing, buffing and polishing.
2. **Ergonomically designed two position auxiliary handle** provides maximum balance, control and gripping comfort on any horizontal or vertical surface.
3. **Rear Twist Handle** rotates 90 degrees for maximum flexibility and control
4. **Locking (On/Off) Push Button** for comfort and control.
5. Convenient **Variable Speed Dial: Seven speed thumb control**
6. **7-in Velcro Backer Pad** follows surface contours for efficient buffing/polishing.
7. There are two 8-in. foam pads, one to apply wax (yellow pad) and one to apply buffing polish (orange pad). Neither of the pads remove the residue. That is done by hand with a clean soft cloth or microfiber cloth.
8. **Lubricated Ball Bearings** for smooth and efficient operation.
9. **Lightweight, High-impact Resistant Housing** reduces weight, helps protect tool from damage.
10. **Spindle Lock** for easy pad changes.
11. **Brush cover**

**Fig. 2**



### TECHNICAL DATA

<b>Rated voltage</b>	120 V ~ 60 Hz
<b>Amps</b>	10 A
<b>Rated no load speed</b>	800 - 3000/min
<b>Protection class</b>	□

<b>Backer Pad size</b>	7-in. velcro
<b>Spindle Thread</b>	M 14
<b>Weight</b>	7.2 lbs.
<b>Arbor Size</b>	5/8 inch (11" per thread)

## OPERATION

Before attempting to use your tool, familiarize yourself with all of the operating features and safety requirements.

**⚠ WARNING:** IF ANY PARTS ARE MISSING, DO NOT OPERATE THIS POLISHER UNTIL THE MISSING PARTS ARE REPLACED. FAILURE TO DO SO COULD RESULT IN POSSIBLE SERIOUS PERSONAL INJURY.

**⚠ CAUTION:** ALWAYS wear eye protection while operating this power tool.

### BEFORE YOU BEGIN TO WAX, BUFF AND POLISH YOUR CAR:

1. Remove all road tar, excess grease spots and bug stains with a general-purpose cleaner.
2. Wash, clean and dry your vehicle. Make sure the work area is dry and out of direct sunlight.

### INSTALLING THE FRONT AUXILIARY HANDLE (See Figures 1A and 1B)

You have the option of two working positions to provide the safest and most comfortable control of your polisher.

The auxiliary handle is screwed clockwise into EITHER hole on the sides of the gear case.

Fig. 1A

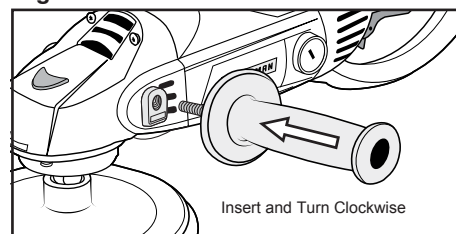
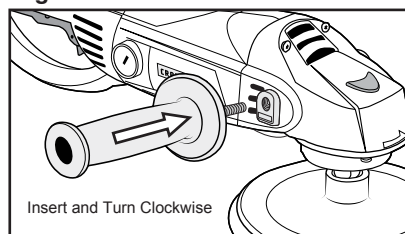


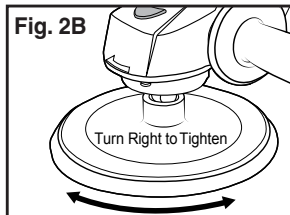
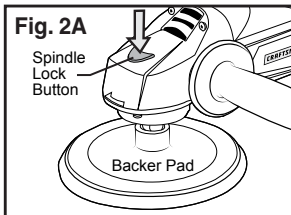
Fig. 1B



### SPINDLE LOCK BUTTON (See Figures 2A and 2B)

1. **Changing backer pad.** ALWAYS make sure your polisher is UNPLUGGED. Press in the Spindle Lock Button and rotate the velcro backer pad by hand until it is locked.
  - Turn pad to the right to attach and lock in place.
  - Turn to the left to remove pad.

**⚠ WARNING:** Spindle Lock Button must only be used when changing a pad. NEVER press it when the pad is rotating.



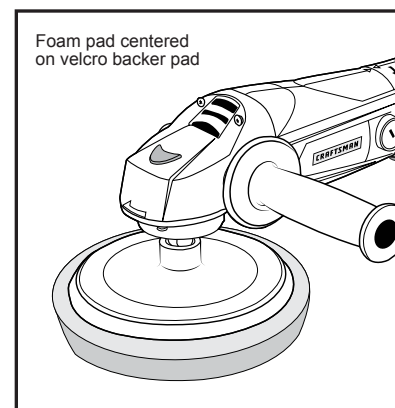
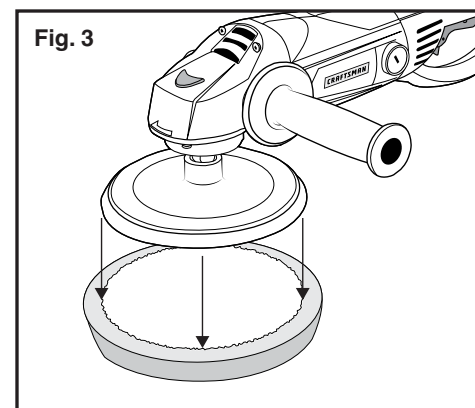
## OPERATION cont.

### ATTACHING THE FOAM PAD TO THE VELCRO BACKER PAD (See Figure 3)

**⚠ WARNING:** When changing accessories, **BE SURE** that the switch is in the **OFF** position and the cord is unplugged.

1. Place foam pad on velcro backer pad, as shown in Fig. 3.
2. **ALWAYS center** the foam pad securely over the velcro backer pad, otherwise the polisher will vibrate badly.
3. Remove the foam pad by pinching an edge and peeling it off.

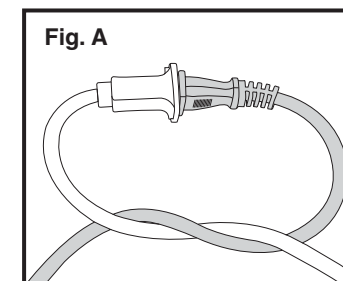
Fig. 3



### RUNNING YOUR POLISHER AND WAXING TOOL (See Figure A)

1. After plugging your polisher into an extension cord, loop extension cord over tool's built-in cord and secure as shown. Refer to (Fig. A) for attaching extension cord.
2. To avoid splashing wax, **ALWAYS** start and stop the polisher against the surface to be polished.

Fig. A



## OPERATION cont.

### RUNNING YOUR POLISHER AND WAXING TOOL cont.

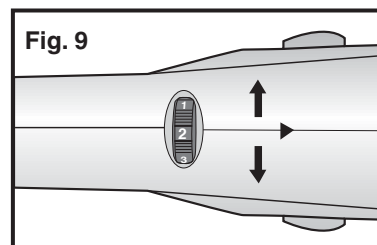
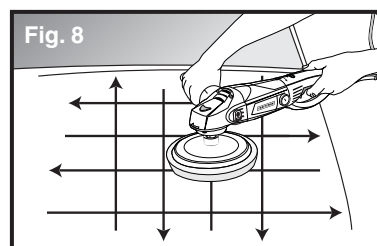
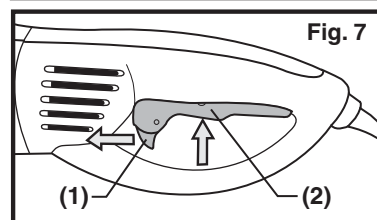
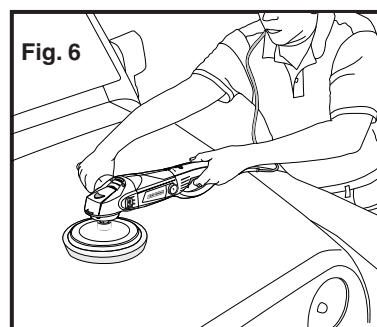
3. Place the extension cord over your shoulder to keep it safely out of your way (see Fig. 6).

#### 4. Power ON/OFF:

- To start operation, press **Locking (On/Off) Push Button (1)** forward and at same time pull up on **Release On/Off Trigger Switch (2)** (See Fig. 7). Release both button and switch to lock tool on for continuous use.

- To stop operation, again press Push Button forward and at same time pull up and release the trigger switch (See Fig. 7).

5. Apply wax in a straight line with either a side-to-side or back and forth motion. **ALWAYS** use broad, even strokes when applying wax (See Fig. 8).



### VARIABLE SPEED CONTROL (SEE FIG. 9)

The convenient Variable Speed Control dial allows you to increase or decrease the polishing speed. Rotate the dial with your thumb to choose one of the 7 speeds: The higher the number the faster the speed.

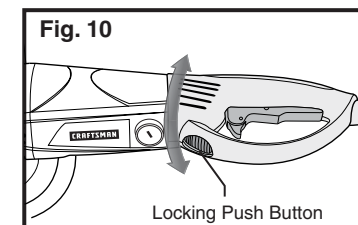
Dial Indication	Speed range (/min)	Type of works
MIN	800	For waxing
1	1100	
2	1500	
3	1800	
4	2500	For polishing
5	2800	
MAX	3000	

## OPERATION cont.

### RUNNING YOUR POLISHER AND WAXING TOOL cont.

#### REAR TWIST HANDLE (SEE FIG.10)

For polishing control and added comfort, the polisher is equipped with a rear rotatable handle. Push in the **Locking Push Button** on the rotatable handle and you can rotate the handle 90° to left or right. Then release the locking button. A click will be heard when the handle is fully locked in place.



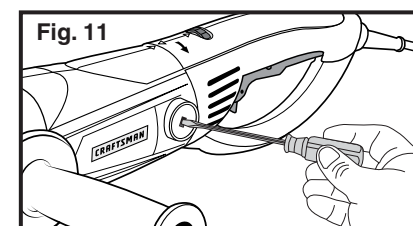
**WARNING:** Make sure the handle is in the locked position before turning on the polisher. Rotating the handle is permitted only in the switched off condition.

## MAINTENANCE

**WARNING:** ALWAYS remove the plug from the socket before carrying out any adjustment, servicing or maintenance.

### TO REPLACE THE BRUSHES (SEE FIG. 11)

1. Use a slotted screwdriver to remove cap and brush holder by turning left to loosen cap and right to tighten.
2. Check the length of the brush and replace if under 1/4-in. (7mm).
3. Put the brush holder into the body. Tighten the brush holder.
4. Check the polisher is working properly before use; allow it run for a few minutes to enable the brushes to be stable.



**NOTE:** When brushes need replacement always renew both brushes, even if one is still more than 1/4-in. (7mm).

**NOTE:** Brushes can be purchased at a Sears Parts & Repair Service Center or online at [www.craftsman.com](http://www.craftsman.com). See pages 16-17 for item part number.

### CARE & CLEANING

1. We recommend hand washing and air drying for longer foam pad life. Pads should be cleaned with a mild dish washing detergent. Rinse pads to remove all soap.
2. Remove the foam pad when the polisher is not in use, so the pad can dry out and retain its original shape.
3. To prolong the life of the pad, **ALWAYS** store the polisher with the pad face up.
4. **NEVER USE ABRASIVE COMPOUNDS WITH THIS TOOL.**
5. **DO NOT** apply too much wax to the foam pad. Applying too much wax causes the foam pad to become saturated and it will not last as long. **THIS MAKES POLISHING MORE DIFFICULT AND IT TAKES LONGER.**
6. If the foam pad has large vibration, you may be using too much wax.
7. **ONLY USE** a mild soap solution and a damp sponge to clean the polisher.
8. **DO NOT** immerse any part of the polisher in liquid.

**NOTE:** Your buffer/polisher requires no additional lubrication or maintenance. Never use water or chemical cleaners to clean your buffer/polisher. If the supply cord is damaged, it must be replaced by the manufacturer, its service agent or similarly qualified persons in order to avoid a hazard.



## MAINTENANCE

### TROUBLESHOOTING

1. If your power tool does not start, check the plug on the power supply first.
2. If the polisher does not abrade surface, check the bonnet.  
If the bonnet has been worn, replace the new bonnet and try again.
3. If a fault can not be corrected, return the tool to a qualified dealer for inspection and possible repair.
4. If the power supply cord is damaged, immediately discontinue tool use.  
Take the tool to a qualified service dealer for inspection and possible repair.  
Only use an identical replacement part power supply cord.

### NEED MORE HELP?

You'll find the answer and more on [managemylife.com](http://managemylife.com)

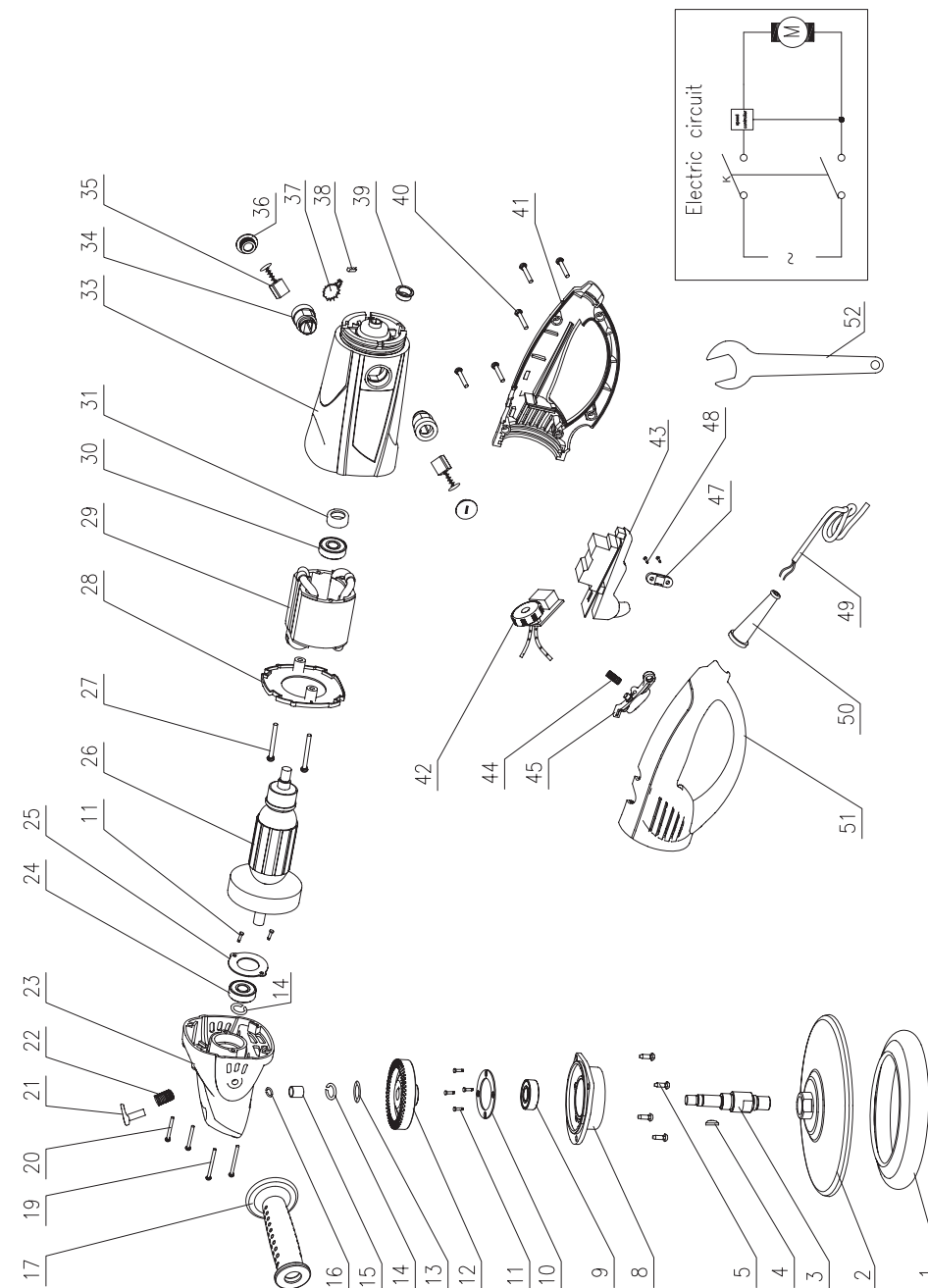
- Find this and all your other product manuals online.
- Get answers from our team of home experts.
- Get a personalized maintenance plan for your home.
- Find information and tools to help with home projects.



## PARTS LIST

### 7-in. Polisher MODEL NUMBER 172.395560

The model number will be found on the nameplate of the polisher.  
Always mention the model number when ordering parts for this tool.  
To order parts, call 1-888-331-4569



**PARTS LIST****7-in. Polisher MODEL NUMBER 172.395560**

The model number will be found on the nameplate of the polisher.  
Always mention the model number when ordering parts for this tool.  
To order parts, call 1-888-331-4569

Position No.	Part Number	Part Description	Qty.
1	PP1802U-1	Foam pad	1
2	PP1802U-2	Velcro backer pad	1
3	PP1802U-3	Spindle	1
4	PP1802U-4	Key	1
5	PP1802U-5	Screw Washer Assembly	4
8	PP1802U-8	Gear Case Cover	1
9	PP1802U-9	Bearing	1
10	PP1802U-10	Press Plate	1
11	PP1802U-11	Screw	6
12	PP1802U-12	Gear	1
13	PP1802U-13	Spring Washer	1
14	PP1802U-14	Circlip	2
15	PP1802U-15	Needle Bearing	1
16	PP1802U-16	Circlip	1
17	PP1802U-17	Auxiliary Handle	1
19	PP1802U-19	Screw	2
20	PP1802U-20	Screw	2
21	PP1802U-21	Spindle Lock	1
22	PP1802U-22	Spring	1
23	PP1802U-23	Gear Case	1
24	PP1802U-24	Bearing	1
25	PP1802U-25	Press Plate	1
26	PP1802U-26	Rotor	1
27	PP1802U-27	Screw	2
28	PP1802U-28	Baffle	1
29	PP1802U-29	Stator	1
30	PP1802U-30	Bearing	1
31	PP1802U-31	Bearing Sleeve	1
33	PP1802U-33	Housing	1
34	PP1802U-34	Brush Holder	2
35	PP1802U-35	Carbon Brush (pair)	1
36	PP1802U-36	Brush Cover	2
37	PP1802U-37	Spring	1
38	PP1802U-38	Connecting Plate	5
39	PP1802U-39	Hold Down Plate	1
40	PP1802U-40	Screw	5
41	PP1802U-41	Rear Cover	1
42	PP1802U-42	Speed Controller	1
43	PP1802U-43	Switch	1
44	PP1802U-44	Spring	1
45	PP1802U-45	Rotating Handle Button	1
47	PP1802U-47	Press Plate	1
48	PP1802U-48	Screw	2
49	PP1802U-49	Cord	1
50	PP1802U-50	Cord Protector	1
51	PP1802U-51	Left Handle	1
52	PP1802U-52	Spanner	1