

**Proctor Silex**

## Can Opener

READ BEFORE USE

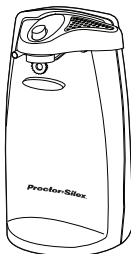
## L'ouvre-boîtes

À LIRE AVANT UTILISATION

## Abrelatas

LEA ANTES DE USAR

Le invitamos a leer cuidadosamente este instructivo antes de usar su aparato.



English ..... 2

**USA: 1-800-851-8900**

Visit [proctorsilex.com](http://proctorsilex.com) for delicious recipes and to register your product online!

Français ..... 8

**Canada : 1-800-267-2826**

Consulter [proctorsilex.ca](http://proctorsilex.ca) pour les recettes délicieuses et pour enregistrer votre produit !

Español..... 14

**En México: 01-800-71-16-100**

Visite [proctorsilex.com.mx](http://proctorsilex.com.mx) para recetas deliciosas y para registrar su producto en línea.

# **WARNING**

## **Shock Hazard**

- Do not immerse this appliance in water or other liquid.
- This appliance has a polarized plug (one wide blade) that reduces the risk of electrical shock. The plug fits only one way into a polarized outlet. Do not defeat the safety purpose of the plug by modifying the plug in any way or using an adaptor. If the plug does not fit, reverse the plug. If it still does not fit, have an electrician replace the outlet.

# **IMPORTANT SAFEGUARDS**

When using electrical appliances, basic safety precautions should always be followed, including the following:

1. Read all instructions.
2. To protect against risk of electrical shock, do not put can opener body, cord, or plug in water or other liquid.
3. Close supervision is necessary when any appliance is used by or near children.
4. Unplug from outlet when not in use, before putting on or taking off parts, and before cleaning.
5. Avoid contacting moving parts.
6. Do not operate any appliance with a damaged cord or plug, or after the appliance malfunctions or is dropped or damaged in any manner. Call our toll-free customer service number for information on examination, repair, or electrical or mechanical adjustment.
7. The use of attachments not recommended or sold by Hamilton Beach/Proctor-Silex, Inc. may cause fire, electric shock, or injury.

8. Do not use outdoors.
9. Do not let cord hang over edge of table or counter, or touch hot surfaces including the stove.
10. Do not open pressurized (aerosol-type) cans.
11. Do not open cans of flammable liquids such as lighter fluid.

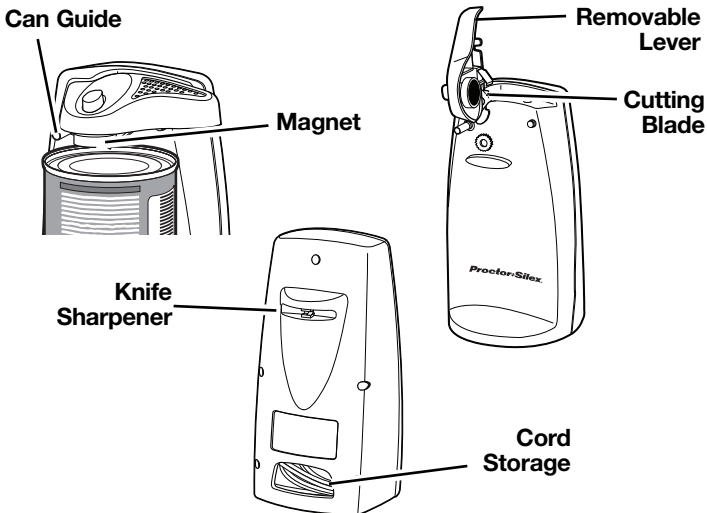
## SAVE THESE INSTRUCTIONS!

### OTHER CONSUMER SAFETY INFORMATION

This appliance is intended for household use only.

### Parts and Features

---



## **Using Your Can Opener**

---

1. Place can opener on level surface.
2. Plug icord into electrical outlet.
3. Raise removable lever up.
4. Place rim of can firmly under can guide and against geared wheel.
5. Tilt top of can in, to position the cutting blade on inside rim of can.
6. Press removable lever all the way down.
7. The motor will begin turning can and cutting lid. (It is not necessary to hold the remvable lever down or to hold the can during the cutting action.
8. The motor will automatically stop when the can is open.

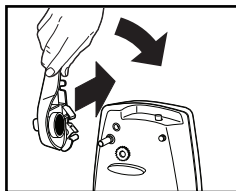
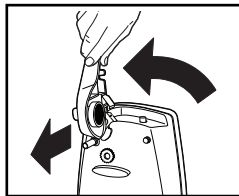
## **Tips for Best Use**

---

- The can opener will easily open all standard size cans.
- On some models it will be necessary to position can opener at edge of counter, allowing for clearance to open cans taller than the can opener.
- If there is a bump, dent, or heavy seam in the rim of the can, open the other end of the can or start cutter just beyond it.
- Cans made with aluminum lids will not adhere to the magnet.
- The motor of your can opener is permanently lubricated and will not require oiling.
- To use the cord storage on the back of the opener, push in or pull out cord as needed.

# Cleaning Your Can Opener

1. Unplug cord from electrical outlet.
2. Remove complete cutting assembly as shown. Lift removable lever up and to the left. Pull straight out of can opener body.
3. Wash cutting assembly in hot, soapy water, Rinse and dry thoroughly.
4. Wipe body of can opener with damp cloth.
5. To reassemble, hold removable lever straight up, push metal post into hole on can opener body as far as it will go and gently release to the right.



## WARNING

### Electrical Shock Hazard

- Unplug unit before cleaning.
  - Do not immerse base, plug or cord in water or other liquid.
- Failure to follow these instructions can result in death or electrical shock.

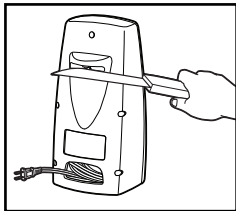
# Sharpening Knives

---

This feature on selected models.

1. Place cutting edge of knife in the knife slot located on the back of the can opener.
2. Draw the knife blade through the slot several times.

**NOTE:** Serrated blades should never be inserted into this unit.



**ProctorSilex**

## Limited Warranty

This warranty applies to products purchased in the U.S. and Canada. This is the only express warranty for this product and is in lieu of any other warranty or condition.

This product is warranted to be free from defects in material and workmanship for a period of one (1) year from the date of original purchase. During this period, your exclusive remedy is repair or replacement of this product or any component found to be defective, at our option; however, you are responsible for all costs associated with returning the product to us and our returning a product or component under this warranty to you. If the product or component is no longer available, we will replace with a similar one of equal or greater value.

This warranty does not cover glass, filters, wear from normal use, use not in conformity with the printed directions, or damage to the product resulting from accident, alteration, abuse, or misuse. This warranty extends only to the original consumer purchaser or gift recipient. Keep the original sales receipt, as proof of purchase is required to make a warranty claim. This warranty is void if the product is used for other than single-family household use.

We exclude all claims for special, incidental, and consequential damages caused by breach of express or implied warranty. All liability is limited to the amount of the purchase price. **Every implied warranty, including any statutory warranty or condition of merchantability or fitness for a particular purpose, is disclaimed except to the extent prohibited by law, in which case such warranty or condition is limited to the duration of this written warranty.** This warranty gives you specific legal rights. You may have other legal rights that vary depending on where you live. Some states or provinces do not allow limitations on implied warranties or special, incidental, or consequential damages, so the foregoing limitations may not apply to you.

To make a warranty claim, do not return this appliance to the store. Please call 1.800.851.8900 in the U.S. or 1.800.267.2826 in Canada or visit [proctorsilex.com](http://proctorsilex.com) in the U.S. or [proctorsilex.ca](http://proctorsilex.ca) in Canada. For faster service, locate the model, type, and series numbers on your appliance.