

# DeLonghi

## TRD40615E HIGH PERFORMANCE RADIANT HEATER

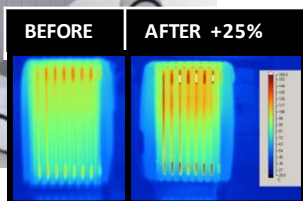


Introducing our fastest heater yet with a revolutionary new design that effectively and efficiently heats cold rooms. Features 25% more radiant surface and patented thermal "chimney effect" that quickly circulates warmed air throughout the room.



Easy to use digital control panel with all options included for an immediate use

**Advanced Eco-Plus Function**, intelligently selects the ideal power level based on the delta between the current room temperature and the set temperature resulting in 20% - 40% energy savings!\*



TRD40615ER



**MAXIMUM POWER: 1500 Watts**

### FEATURES:

Patented thermal chimneys engineered to maximize heat flow yet maintain a low surface temperature.  
Up to 25% more radiant heat  
Silent Operation  
Digital Controls  
24-hour programmable timer allows you to heat rooms for any desired amount of time and lets you select different time periods throughout the day and night.  
Adjustable Thermostat  
Three heat levels  
Anti-freeze setting will automatically turn on when the temperature in the room drops below 44 degrees F.  
Patented Smart Set Wheels – no assembly required

### SAFETY FEATURES:

Thermal cut-off function  
Permanently sealed with pure diathermic oil  
Rust-resistant durable metal construction  
Fully enclosed heating element  
Extra wide feet

MODEL	TRD40615ER
SAP CODE	
UPC	0 - 4 4 3 8 7 - 1 4 7 1 5 - 6
SCC14	
UNIT (LxWxH)	16 x 6.5 x 25 (est)
VOL Unit ft3	1.5
UNIT Weight (Lbs)	24 lbs (est)
CARTON (LxWxH)	16.5 x 7 x 27 (est)
VOL Carton ft3	1.8
CARTON Weight	27 lbs (est)
Pcs per Master	1
MASTER (LxWxH)	
VOL Master ft3	
MASTER Weight	
CONTAINER 20'	607
CONTAINER 40'	1233
CONTAINER 40HC'	1407
CONTAINER 45'	