

Wireless Multi-Room Speaker

User's Guide for Model ISWF576-1518-01



iLIVE PLATINUM

Warnings & Precautions

FCC Warnings

- Warning: Changes or modifications to this unit not expressly approved by the party responsible for compliance could void the user's authority to operate the equipment.

NOTE: This equipment has been tested and found to comply with the limits for a Class B digital device, pursuant to Part 15 of the FCC Rules. These limits are designed to provide reasonable protection against harmful interference in a residential installation. This equipment generates, uses, and can radiate radio frequency energy and, if not installed and used in accordance with the instructions, may cause harmful interference to radio communications. However, there is no guarantee that interference will not occur in a particular installation. If this equipment does cause harmful interference to radio or television reception, which can be determined by turning the equipment off and on, the user is encouraged to try to correct the interference by one or more of the following measures:

- Reorient or relocate the receiving antenna.
- Increase the separation between the equipment and receiver.
- Connect the equipment into an outlet on a circuit different from that to which the receiver is connected.
- Consult the dealer or an experienced radio/TV technician for help.

Additional Warnings

- CAUTION: TO PREVENT ELECTRIC SHOCK, MATCH WIDE BLADE OF PLUG TO WIDE SLOT; FULLY INSERT.
- Mains plug is used as disconnect device and it should remain readily operable during intended use. In order to disconnect the apparatus from the mains completely, the mains plug should be disconnected from the mains socket outlet completely.
- WARNING: To reduce the risk of fire or electric shock, do not expose this apparatus to rain, moisture, dripping, or splashing.
- WARNING: Changes or modifications to this unit not expressly approved by the party responsible for compliance could void the user's authority to operate the equipment.
- Lithium batteries, like all rechargeable batteries, are recyclable and should be recycled or disposed of according to state and local guidelines. They should never be disposed of in normal household waste, and they should never be incinerated, as they might explode. Contact your local government for disposal or recycling practices in your area.
- Battery shall not be exposed to excessive heat such as sunshine, fire or the like.
- Batteries should be recycled or disposed of as per state and local guidelines.
- WARNING: This product may contain chemicals known to the State of California to cause birth defects, or other reproductive harm (California Prop 65). Wash hands after handling.
- This product meets and complies with all Federal regulations.

Table of Contents

Introduction - 5

Features

Includes

Overview

Controls & Inputs - 6

Indicator Lights - 7

Control Functions - 7

Power & Charging - 8

Charging the Speaker

iLive Wi-Fi App

App Download - 9

Initial Setup & Connecting To
Wi-Fi - 9

Alternative Wi-Fi Setup - 10

Main Screen/Now Playing - 11

Music Menu - 12

Internet Music Services - 13

My Music - 14

Setting Preset Stations - 15

Device List - 16

Adding Speakers/Devices - 17

Multi-Room Play - 17

Multi-Channel Play With Multiple
Speakers - 17

Other Ways to Play - 18

Bluetooth Wireless

Aux In

Troubleshooting - 19

Company Information - 20

Contact Information

International Support

Warranty Information

Introduction

Make your home audio ready with our Wi-Fi speakers and easy to use app. Connect to Spotify and other online music services with the touch of a button and play your favorite songs in any room of the house.

Features

- » Multi-room/multi-speaker play
- » On-speaker play, volume, and preset controls
- » Built-in Wi-Fi & Wi-Fi Direct
- » Wi-Fi range - 98.5 ft
- » Supports Bluetooth
- » Bluetooth range - 33 ft
- » Aux In (3.5mm audio input)
- » Aux In cable (3.5mm audio cable)
- » Built-in rechargeable battery
- » AC/DC power adapter and charging dock
- » Battery life - 6 hours at 50% volume/3.5 hrs at 100% volume

Includes

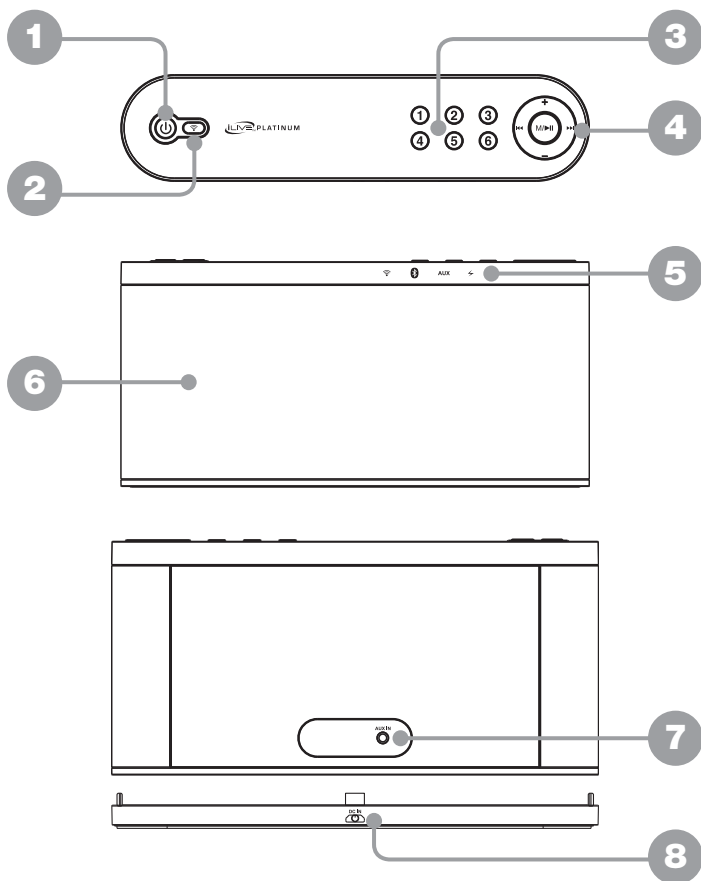
- » Charging dock
- » AC/DC power adapter
- » 3.5mm audio cable
- » User's Guide

Specifications are subject to change without prior notice.

The Spotify software is subject to third party licenses found here: www.spotify.com/connect/third-party-licenses

Overview

Controls & Inputs



1. Power ON/OFF

2. WPS button

3. Presets

4. Play/Volume controls

5. Indicator lights

6. Speaker

7. Aux In (3.5mm audio input)

8. Charging base & power port (rear)

Overview

Indicator Lights



» **Wi-Fi**

Blinking - Connecting to Wi-Fi

Solid - Connected to Wi-Fi

Off - Networking disabled/Aux In or Bluetooth mode in use



» **Bluetooth Wireless**

Blinking - Pairing Bluetooth

Solid - Paired



» **Auxiliary Audio Input**

Solid Green - Aux In detected and in use



» **Battery**

Solid Red - Charging

Off - Full charge

Control Functions



» **Power**

Press and hold to power the speaker ON or OFF.



» **WPS**

Press to search or disconnect from a Wi-Fi network.



» **Skip Track**

Press to skip between tracks without having to use the app on your connected mobile device.



» **Volume**

Press to change the volume without having to use the app on your connected mobile device.



» **M/Play/Pause**

A short press will play or pause audio.

A long press will switch between Bluetooth, Aux In and Wi-Fi modes.



» **Presets 1-6**

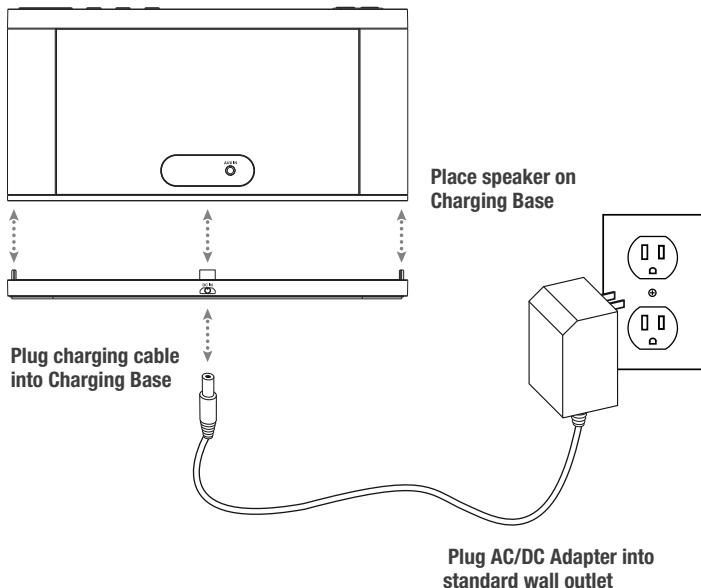
Set playlists, stations, or albums for quick and easy listening.

Power & Charging

Charging the Speaker

The speaker should be fully charged before use. A fully charged battery should last for approximately 16 hours of continuous use at 50% volume. Play time will decrease at louder volumes and increase at lower volumes.

It is not recommended to charge the speaker for longer than 4 hours.



iLive Wi-Fi App

App Download

The iLive Wi-Fi app lets you play music and audio from streaming services like Spotify, iHeartRadio and others. It also controls the speaker's other functions, such as multi-room play, multi-channel play, etc. Download the app for your device by scanning the QR codes below, or searching for the **iLive Wi-Fi** app in the Apple App Store™ or Google Play Store™.

Note that this app is designed for mobile devices only, such as smartphones or Wi-Fi enabled tablets. It is not available for use on regular desktop or laptop computers.

Apple™




Android™




Initial Setup & Connecting To Wi-Fi

Before use, the speaker and your phone or tablet must connect to the Wi-Fi network you want to use. The on screen prompts will guide you through the process, but the steps below are provided for your reference.

If you have a dual band wireless router, be sure to connect using the 2.4G frequency.

- » Power on the speaker and press the  button. The speaker will begin searching for a Wi-Fi network to connect to.
- » Launch the app by tapping the **iLive Wi-Fi** app tile on your phone or tablet.
- » Tap the **Search** button on the launch screen.
- » Enter your Wi-Fi network password and tap Next.

Be sure to follow the network configuration all the way through to the end, do not back out or stop the configuration halfway. If the app or speaker fails to connect to Wi-Fi, tap the  on the speaker and try again. If you are still having trouble, see the next section on Alternative Wi-Fi Setup (pg. 10).

- » The speaker and the phone should now be connected. A voice prompt will sound from the speaker indicating that Wi-Fi has successfully connected. Tap the **Next** button on the screen.
- » Setup is now complete and the system is ready to use.

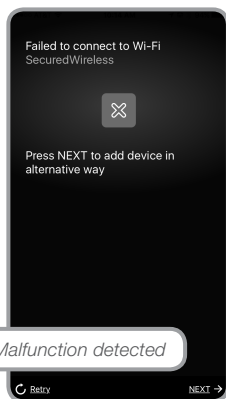
iLive Wi-Fi App

Alternative Wi-Fi Setup

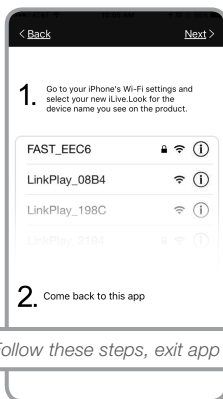
If you are having trouble connecting your phone to the speaker or the speaker to your Wi-Fi network (time/percentage runs out), the app will automatically detect the malfunction and provide steps for a different connection method.

This connection type involves accessing your phone's Wi-Fi settings to first connect the phone to the speaker, then the speaker to your wireless router/Wi-Fi network.

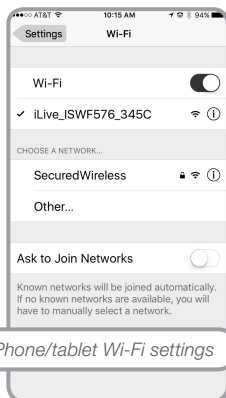
If you are still experiencing trouble, consult the Troubleshooting section at the back of this manual.



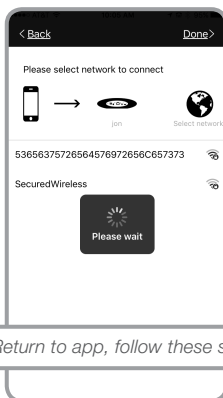
Malfunction detected



Follow these steps, exit app



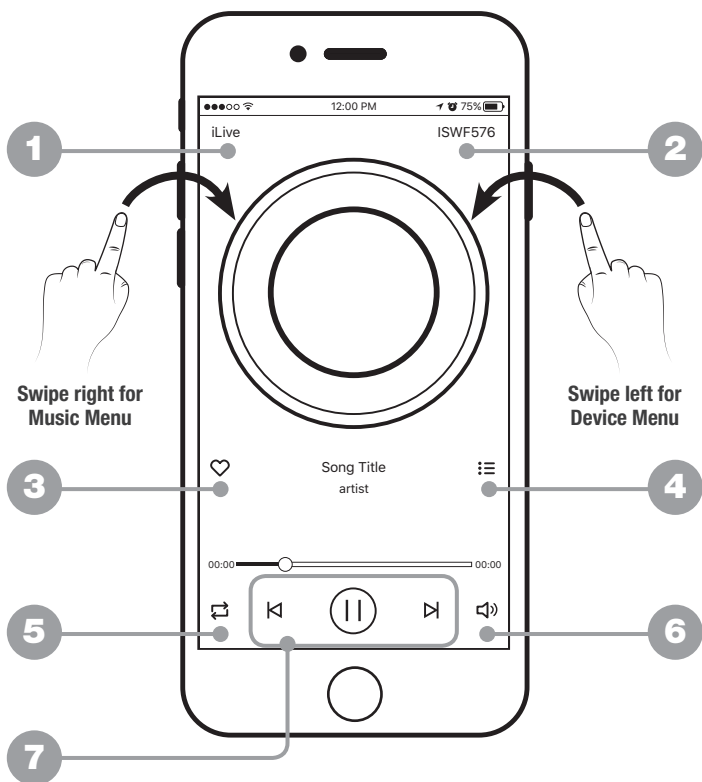
Phone/tablet Wi-Fi settings



Return to app, follow these steps

iLive Wi-Fi App

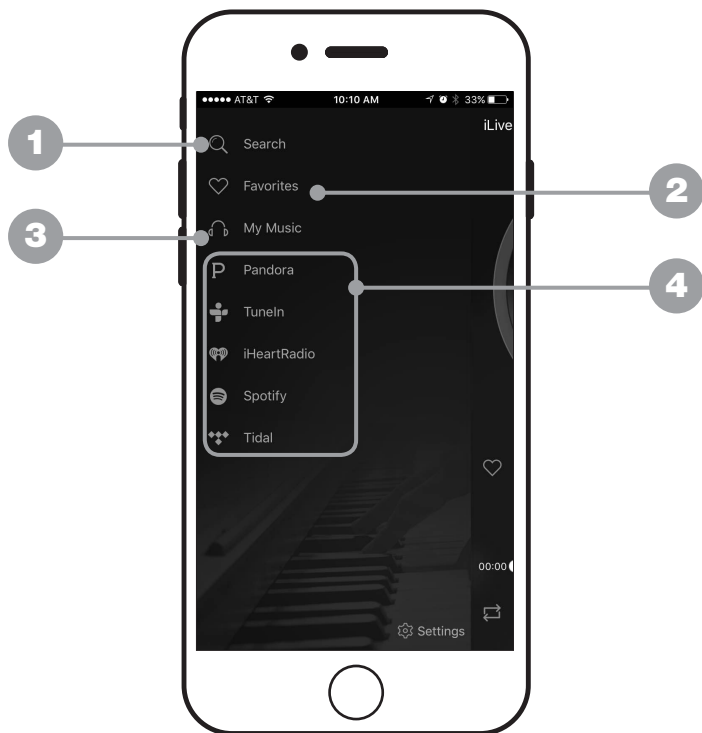
Main Screen/Now Playing



- | | |
|------------------------------------|---------------------|
| 1. Music Menu | 4. Current Playlist |
| 2. Current Speaker/
Device Menu | 5. Repeat/Shuffle |
| 3. Add to Favorites | 6. Volume |
| | 7. Play Controls |

iLive Wi-Fi App

Music Menu



1. SEARCH

Search for songs, albums and artists.

2. FAVORITES

Open songs, artists, albums, or stations that you have saved.

3. MY MUSIC

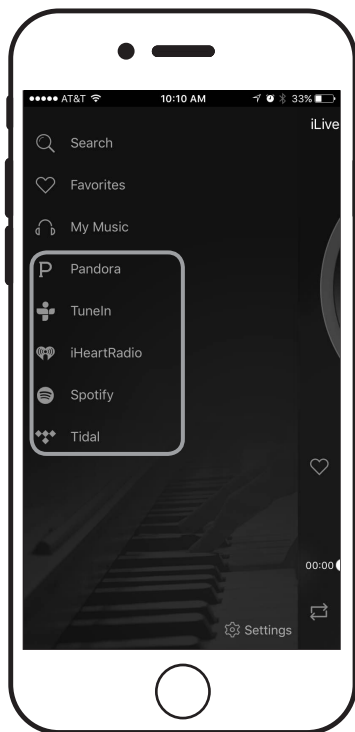
Open music that is stored on your phone or tablet.

4. INTERNET MUSIC SERVICES

Can be enabled or disabled in Settings.

iLive Wi-Fi App

Internet Music Services

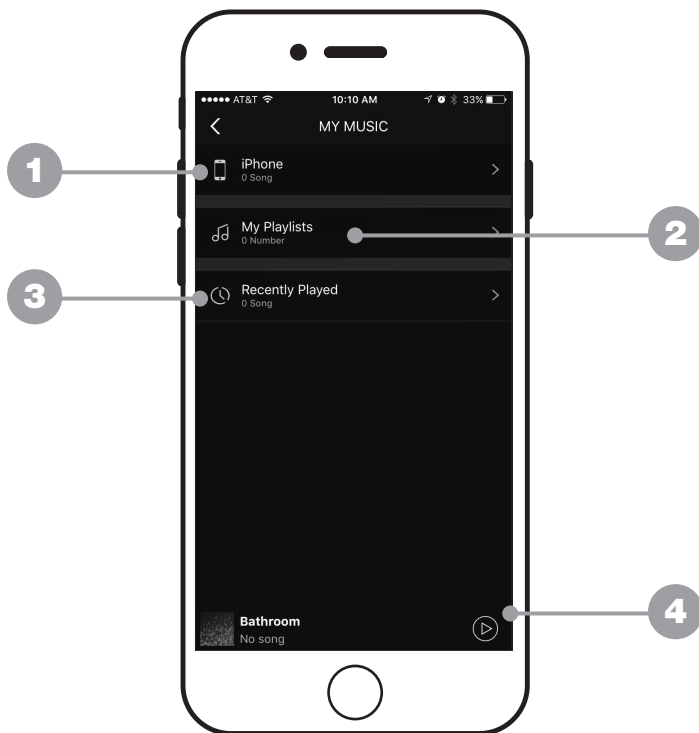


The iLive Platinum app supports and can play songs from Spotify, iHeartRadio, TuneIn, and Tidal. If you already have accounts with any of these services, the app will prompt you to sign in so that it can access any songs or stations you may already have saved with that service.

If you do not have an account with one of these services, the iLive Platinum app can guide you through the set up process; however, you may need to download and install one of the internet music services first (ex. Spotify app), before it can play. Follow the on screen prompts to add services and set up an account.

iLive Wi-Fi App

My Music



1. THIS PHONE/TABLET

Find music stored on the phone or tablet you are currently using.

2. MY PLAYLISTS

Open and create playlists in the app or link a playlist from another source.

3. RECENTLY PLAYED

Browse and open any recently played music.

4. CURRENT SPEAKER & TRACK

Press to return to the Main/Now Playing screen.


iLive Wi-Fi App

Setting Preset Stations

Preset List
(internet radio
stations shown)



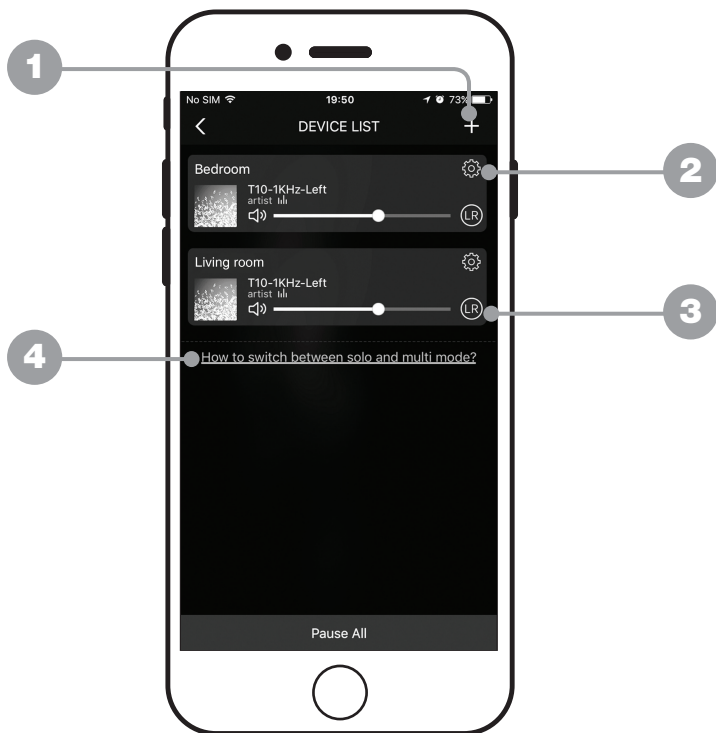
You can set up to six presets for fast and easy play from the app or just the speaker. Any station, playlist, or album can be set as a preset*.

To set a preset, press the  button on the Music screen, select the preset slot of your choice (1-6) and confirm the selection. You can now press the corresponding preset button on the speaker or the app to play that music.

**Presets not compatible with Spotify.*

iLive Wi-Fi App

Device List



1. ADD DEVICE

Add more speakers for more play options.

2. SPEAKER SETTINGS

Rename a speaker, set preset stations, and find additional information on a speaker.

3. AUDIO CHANNEL SELECTOR

Set audio channels for the speaker L / R / LR (left/right/stereo).

4. DEVICE HELP

Click for help on setting up additional devices.

iLive Wi-Fi App

Adding Speakers/Devices

The procedure for adding more speakers is almost the same as the initial Wi-Fi setup for the first speaker. From the Device screen, press the **+** button and follow the on screen prompts to connect a new iLive Wi-Fi speaker to your Wi-Fi network. When successfully completed, the new speaker should appear in the Device List, and be ready to use.

Multi-Room Play

Place speakers in any room and use the app to play music from the speaker of your choice. You can play different songs from different speakers, set individual volume levels, or you can link all of the speakers to play the same song.

Multi-Mode

- » In the Device List, press and hold a device icon for two seconds, then drag towards another device to link the speakers together.

Solo-Mode

- » Press and hold the device icon, then drag downwards past the dotted line.

Multi-Channel Play With Multiple Speakers

You can use two or more speakers in one room for a surround sound effect by setting the **Audio Channel** selector to **“LR” (stereo)** for all of the speakers.

You can also use two speakers at once for stereo play by setting the **Audio Channel** selector to **“L” and “R”** for the “left” and “right” speaker respectively.

See #3 on the previous page.

Other Ways to Play

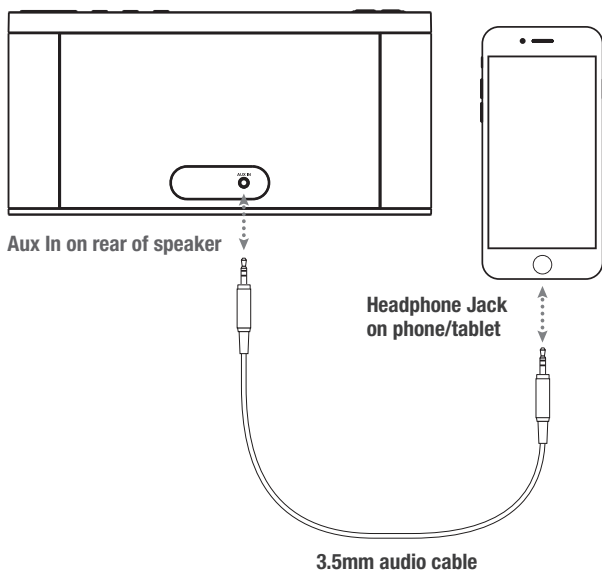
Bluetooth Wireless

The speaker can also connect to devices through Bluetooth. Follow the steps below to pair to a Bluetooth enabled device.


- » Power ON the speaker. If the speaker is in Wi-Fi mode, press and hold the **M** button to switch to Bluetooth mode.
- » The Bluetooth indicator will begin blinking slowly as it searches for a device. Press the **M** button to begin pairing (the indicator light will blink quickly).
- » Enable your phone's Bluetooth and select **ISWF576** from the list. When connected, the indicator light will turn solid, and a voice prompt will sound from the speaker.
- » The speaker is now connected, use the controls on your phone to select and begin playing music.

Aux In

The speaker features a 3.5mm audio input for direct audio play from any device with a 3.5mm audio output (standard headphone jack). Simply connect the two using a 3.5mm audio cable (included). The speaker will automatically detect the input and switch to Aux In mode, and a voice prompt will sound from the speaker.



Troubleshooting

PROBLEM	POSSIBLE SOLUTION
Cannot complete Wi-Fi network set up	<ul style="list-style-type: none"> » Make sure the speaker has power and is charged. » Make sure you are connecting to the correct Wi-Fi network. » If using a dual band wireless router, be sure to use the 2.4G frequency. » Be sure to enable Wi-Fi on your mobile device. » Test your internet connection by loading/reloading a web page. If you cannot load the page, you may need to restart your router. » Use the alternate connection method (see pg.10). » Uninstall then reinstall the app, power the speaker OFF, then ON, and restart setup.
Intermittent audio/audio doesn't play	<ul style="list-style-type: none"> » Make sure the volume on the speaker or your connected device is not too low. » Interference may be interrupting the Wi-Fi signal (possible sources could be microwaves, cell phone signals, etc.). Move the system to another location to test. » Stop other applications that may be streaming media from the internet. » System may have a weak Wi-Fi connection. Move system closer to your router.
Bluetooth fails to connect	<ul style="list-style-type: none"> » Make sure the speaker has power and is charged. » Make sure both the speaker and your device are in Bluetooth mode. » Stay within 33 ft of the speaker when pairing.
Aux In won't play	<ul style="list-style-type: none"> » Make sure the audio cable is firmly connected to the audio ports of both devices. » Make sure the volume on the speaker or your connected device is not too low. » Press M on the speaker to manually switch to Aux In mode.
White noise	<ul style="list-style-type: none"> » Turn the speaker off and restart.
Speaker still will not function properly	<ul style="list-style-type: none"> » Hold down the  button for 10 seconds to restore factory settings.

Company Information

Contact Information

Website: www.iLiveElectronics.com
Email Support: prodinfo@dpiinc.com
Email Parts: partsinfo@dpiinc.com
Phone Support: 1-888-999-4215

Warranty Information

For Warranty Information and the most up-to-date version of this User's Guide, go to **www.iLiveElectronics.com** and search for model **ISWF576**.

International Support

To download this User's Guide in English, Spanish, or French, or to get answers to frequently asked questions, visit the support section at:

www.iLiveElectronics.com

Para descargar este Manual del Usuario en inglés, español y francés, o para obtener respuestas a preguntas frecuentes, visite la sección de apoyo en:

www.iLiveElectronics.com

Pour télécharger ce guide de l'utilisateur en anglais, espagnol ou français, ou pour obtenir des réponses à des questions fréquemment posées, consultez la rubrique:

www.iLiveElectronics.com



***Protect for Today
Sustain for Tomorrow***

Copyright © 2016 Digital Products International (DPI, Inc.)

All other trademarks appearing herein are the property of their respective owners.