

FOR AGES:

6+

WEIGHT LIMIT:

250 Lbs
113 Kgs

ADULT(S) NEEDED:



TOOLS NEEDED:



WARNING/ADVERTENCIA

- Do not exceed weight limit of 250lbs.
- Remove when trampoline is not in use.
- Trampolines are not for children under 6 years of age.
- Do not use ladder if children under 6 years of age are nearby.
- Do not allow more than 1 person to use the ladder at the same time.

CUSTOMER SERVICE



GQBrands.com



CustomerService@GQBrands.com



1-866-498-5269



4401 Samuell Blvd, Ste 150,
Mesquite, TX 75149

CUSTOMER SERVICE INFORMATION

Thank you for purchasing: **TRAMPOLINE LADDER**

MODEL# 9200TL

At Global Quality Brands®, we want all of our customers to be completely satisfied with their purchase. Please take time to review the contents of the product you have just received to make sure that all of the parts are included. If you find that any parts are missing or damaged, we will happily provide replacement parts at no charge within 30 days of purchase.

Please keep in mind that for select damaged part replacement requests, we will require a photo for submission.

If you request replacement parts, please be sure to include the following information in your correspondence:

To order these parts, or if you have any other questions or concerns about this GQ Brands product, please contact us at

PureFun.Net
Global Quality Brands®
Phone: 1-866-498-5269
Email: CustomerService@gqbrands.com
4401 Samuell Blvd, Ste 150,
Mesquite, TX 75149

Sincerely,
Customer Service

YOUR NAME:

YOUR MAILING ADDRESS:

YOUR EMAIL ADDRESS:

PRODUCT NAME:

PRODUCT MODEL #:

PART # (Located In Manual)

RETAILER WHERE YOU PURCHASED PRODUCT:

DATE OF PURCHASE:

ORDER # (If Available)

SERIAL#:

QUANTITY NEEDED:

PICTURE OF DAMAGED PART(s) SUBMIT VIA Email, Fax, or Mail

LIMITED WARRANTY

Global Quality Brands® warrants this product to be free from defects in workmanship and materials under normal use and conditions for a period of 90 DAYS FROM THE DATE OF ORIGINAL PURCHASE. This Limited Warranty is not transferable and is available only for the original purchaser of the Product. The Company's obligation under this warranty is limited to replacing or repairing the Product, at the discretion of the company.

All warranty coverage extends only to the original retail purchaser from the date of purchase, GQ Brands obligation under this warranty is limited to replacing or repairing, at Global Quality Brands® option. All products for which a warranty claim is made must be received by Global Quality Brands® and accompanied by sufficient proof of purchase (photocopy of the original store receipt, indicating the date of purchase). All freight and handling fees are the responsibility of the consumer to pay, both to and from Global Quality Brands®. All warranty claims must be preauthorized by Global Quality Brands® pre-authorization can be obtained by calling 866-498-5269.

This warranty does not cover ordinary wear and tear, weathering, failure to follow directions, improper installation, improper maintenance, or acts of nature, (such as damage caused by wind, lightning, snow, water, or ice) weather damage, damage caused by unauthorized repair work or damage caused by improper use of the products are not covered by the product warranty. No other warranty beyond that specifically set forth above is authorized by GQBrands®.

GLOBAL QUALITY BRANDS® IS NOT RESPONSIBLE OR LIABLE FOR INDIRECT, SPECIAL OR CONSEQUENTIAL DAMAGES ARISING OUT OF OR IN CONNECTION WITH THE USE OR PERFORMANCE OF THE PRODUCT OR OTHER DAMAGES WITH RESPECT TO ANY ECONOMIC LOSS, LOSS OF PROPERTY, LOSS OF REVENUE OR PROFITS, LOSS OF ENJOYMENT OR USE, COST OF REMOVAL, INSTALLATION OR OTHER CONSEQUENTIAL DAMAGES. SOME STATES DO NOT ALLOW THE EXCLUSION OR LIMITATION OF INCIDENTAL OR CONSEQUENTIAL DAMAGES. ACCORDINGLY, THE ABOVE LIMITATION MAY NOT APPLY TO YOU. THE WARRANTY EXTENDED HEREUNDER IS IN LIEU OF ALL OTHER WARRANTIES AND GLOBAL QUALITY BRANDS®, SPECIFICALLY DISCLAIMS ANY IMPLIED WARRANTY OF MERCHANTABILITY OR FITNESS FOR A PARTICULAR PURPOSE IS LIMITED IN ITS SCOPE AND DURATION TO THE TERMS SET FORTH HEREIN. SOME STATES DO NOT ALLOW LIMITATION ON HOW LONG AN IMPLIED WARRANTY LASTS. ACCORDINGLY, THE ABOVE LIMITATION MAY NO APPLY TO YOU. THIS WARRANTY GIVES YOU SPECIFIC LEGAL RIGHTS. YOU MAY ALSO HAVE OTHER RIGHTS, WHICH VARY FROM STATE TO STATE.

WHILE EVERY ATTEMPT IS MADE TO ENSURE THE HIGHEST DEGREE OF PROTECTION IN ALL EQUIPMENT, WE CANNOT GUARANTEE FREEDOM OF INJURY. THE USER ASSUMES ALL RISK OF INJURY DUE TO USE. ALL MERCHANDISE IS SOLD ON THIS CONDITION, WHICH NO REPRESENTATIVE OF GQ BRANDS® CAN WAIVE OR CHANGE.



IMPORTANT MESSAGE

WARNING - PLEASE READ

ADULT ASSEMBLY REQUIRED

CHOKING HAZARD - Small Parts

NOT for children under 3 years of age.

WARNING:

While every attempt is made to ensure the highest degree of protection in all equipment, we cannot guarantee freedom from injury. The user assumes all risks of injury due to use. All merchandise is sold on this condition, which no representative of the company can waive or change.

WARNINGS

Please read these warnings and the information in this manual in its entirety.

Failure to comply with the following instructions may increase the risk of serious injury and/or death:

- Please read these instructions in their entirety before use and retain for future reference.
- Ensure that this product has been assembled correctly per the instructions in this manual.
- This manual is designed to help you assemble, adjust, maintain and use the product. It contains important information regarding your safety and use of this equipment.
- ALWAYS secure the ladder away from the trampoline when it is not in use to prevent unauthorized and/or unsupervised use of the trampoline. Remove ladder when trampoline is not in use.
- This ladder is ONLY intended for assistance in the mounting and dismounting of large outdoor trampolines. It is the customer's responsibility to ensure that the ladder attaches to their specific trampoline properly, and that it has the necessary ground clearance for proper use. The customer assumes any and all responsibility for any application outside of this intended usage.
- This ladder assists in mounting and dismounting of the trampoline.
- Children under 6 are not recommended to use trampoline.
- Do not use ladder if children under 6 might be nearby.
- Please refer to your trampoline's instruction manual for safety warnings and tips on usage of your trampoline. This guide only refers to the use and assembly of this ladder.
- This unit must be assembled and disassembled by ADULTS ONLY.
- Children must be supervised at all times when using this equipment. DO NOT leave children unattended at any time.
- DO NOT exceed the MAXIMUM WEIGHT limit of 250lbs /113kgs
- DO NOT allow more than one person on the trampoline ladder at a time.
- DO NOT allow other persons to climb on, go under, sit, stand or hang from the ladder while the trampoline is in use.
- Periodically inspect your ladder to make sure the Step Lock Housings are in the "Closed/Locked" position, and that the steps are firmly in place on their housings.
- Dispose of all packaging materials safely and per local ordinance.
- No extra tools are needed for assembly.
- Please refer to the table for part descriptions and numbers.
- Make sure you have all parts listed. If you are missing any parts, please contact customer service.

PARTS LIST

Part #	Description	QTY	Part#	Description	QTY
1R	Right Ladder Riser	x1	3	Step Lock Housing	x4
1L	Left Ladder Riser	x1	4	Foam Cushion	x2
2	Step	x2	-	-	-

ASSEMBLY INSTRUCTIONS



STEP 1:

- Lay Left Ladder Riser (1L) and Right Ladder Riser (1R) on a flat surface as shown to the left.
- Place 2 steps (2) on the ground so that the thicker edge of the step is facing away from you and the stepping surface slopes down towards you as pictured. Flip steps over and slide them onto the Ladder Risers (1L, 1R)
- Insert the Foam Cushions (4) onto the ends of the Ladder Risers (1L, 1R)
- Turn the Ladder Risers (1R, 1L) inwards and insert the smaller end into the larger.

NOTE:

Lift the Steps up towards the hook end of the Ladder Risers to create enough room for the Riser ends to join together.

NOTE:

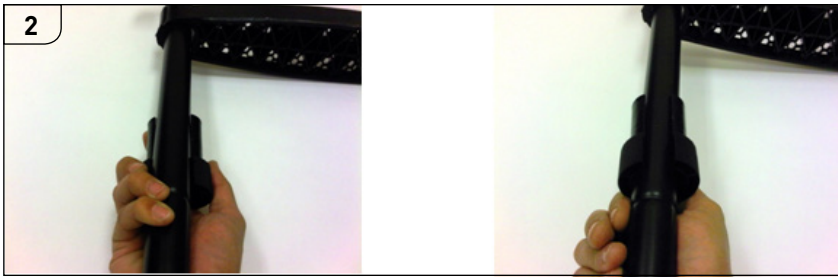
DO NOT ATTACH THE STEP LOCK HOUSINGS YET.

When placing the Step Lock Housings onto the ladder in the next step, make sure that the side shown is facing out from the sides of the ladder. There are tabs in the holes on the Steps which need to slide into the locking mechanism of the housing.

This side will be facing out to the left on the Left Riser, and to the right on the Right Riser. As such, you will have the open seam facing up on one Step Lock Housing and the open seam facing down on the other.



ASSEMBLY INSTRUCTIONS



STEP 2:

- A. Slide each of the steps so they are positioned evenly about 5-6 inches above each groove in the Ladder riser.
- B. Gently pull apart the Step Lock Housings and insert them onto the Ladder Risers just above the two grooves in each Riser. Next, slide them down onto each groove to secure them into place. Remember to position the Housings correctly as noted above before installing the Steps.
- C. Slide the Steps down onto the Step Lock Housings, making sure that the tab on the inside of the Step hole is aligned with the channel in the Step Lock Housing.
- D. Once the Step is fully inserted, turn the Step Lock Housing in the direction of the "Closed" position to lock it into place.

FREQUENTLY ASKED QUESTIONS

- Question: "I had a part missing from my box" or "something was damaged during assembly, what should I do?"

Answer: If it has been 30 days or less from the date of your initial purchase, you can contact customer service (info below) for a replacement part to be issued.

- Question: "I can't get the Steps all the way down on the Step Lock Housing, what's wrong?"

Answer: Make sure that the step lock housings have the locking grooves facing the outside of the ladder risers as described at the bottom of page 6.

