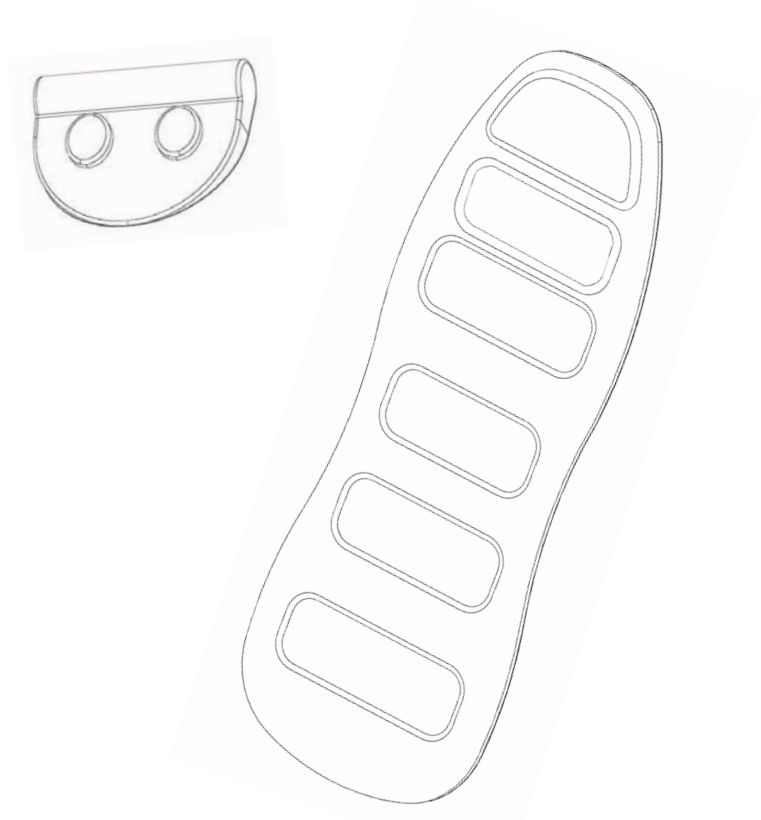


INSTRUCTION MANUAL

Vibration Cushion with Neck Arch Support

10 vibrating motors and 2 infrared
heat sources

1-year limited warranty



Contents of package include Vibration Cushion and components only.

IMPORTANT SAFETY INSTRUCTIONS

WHEN USING ELECTRICAL PRODUCTS, ESPECIALLY WHEN CHILDREN ARE PRESENT, BASIC SAFETY PRECAUTIONS SHOULD ALWAYS BE FOLLOWED, INCLUDING THE FOLLOWING:

READ ALL INSTRUCTIONS BEFORE USING.

DANGER - TO REDUCE THE RISK OF ELECTROCUTION:

- ALWAYS unplug the appliance from the electrical outlet immediately after using and before cleaning.
- DO NOT reach for an appliance that has fallen into water. Unplug it immediately.
- DO NOT use while bathing or in the shower.
- DO NOT place or store appliance where it can fall or be pulled into a tub or sink. DO NOT place in or drop into water or other liquid.
- NEVER use pins or other metallic fasteners with this appliance.
- Carefully examine the covering before each use. Discontinue use if the covering shows any sign of deterioration, such as checking, blistering or cracking.
- Keep dry - DO NOT operate in a wet or moist condition.

WARNING – TO REDUCE THE RISK OF BURNS, ELECTROCUTION, FIRE OR INJURY TO PERSONS:

- An appliance should NEVER be left unattended when plugged in. Unplug from outlet when not in use and before putting on or taking off parts or attachments.
- DO NOT operate under a blanket or pillow. Excessive heating may occur and cause fire, electrocution or injury to persons.
- Close supervision is necessary when this appliance is used by or near children, invalids or disabled persons.
- Use this appliance only for its intended use as described in the operating manual. DO NOT use attachments not recommended by the manufacturer.
- NEVER operate this appliance if it has a damaged cord or plug, is not working properly, if it has been dropped or damaged, or dropped into water. Return it to Customer Service for examination or repair.
- DO NOT carry this appliance by supply cord or use cord as handle.
- Keep cord away from heated surfaces.
- NEVER drop or insert any object into any opening.
- DO NOT use outdoors.
- DO NOT operate where aerosol (spray) products are being used or where oxygen is being administered.
- To disconnect, turn all controls to the “off” position, then remove plug from outlet.
- Use heated surfaces carefully. May cause serious burns. Do not use over insensitive skin areas or in the presence of poor circulation. The unattended use of heat by children or incapacitated persons may be dangerous.
- Temperatures sufficiently high to cause burns may occur regardless of the control setting. DO NOT use on an infant or invalid or on a sleeping or unconscious person. DO NOT use on insensitive skin or on a person with poor blood circulation. Check the skin in contact with the heated area of the appliance frequently to reduce the risk of blistering.
- DO NOT crush. Avoid sharp folds.
- NEVER use while sleeping or fall asleep while using the appliance.

SAVE THESE INSTRUCTIONS

CAUTION—PLEASE READ ALL INSTRUCTIONS CAREFULLY BEFORE OPERATING.

- This appliance is designed for personal, non-professional use only.
- Do not use this product as a substitute for medical attention.
- Consult your doctor before using the Vibration Cushion if you have any concerns regarding your health. Individuals with pacemakers should consult a doctor before use.
- Do not use this product directly on swollen or inflamed areas or skin eruptions.
- This appliance should not be used for more than 15 minutes at a time.
- Extensive use could lead to excessive heating and shorter life. Should this occur, discontinue use and allow the Vibration Cushion to cool before operating.

Instructions for Use

The Vibration Cushion with Far Infrared Neck Arch Support was designed for use with Inversion Tables. Please read all instructions prior to use.

GETTING STARTED

1. Pull apart the Velcro on all of the straps on the Vibration Cushion.

2. Place the Vibration Cushion on top of the inversion table bed. Make sure the electrical cords are located on the left as you stand facing the unit and that they are free from the underside of the Vibration Cushion.

1. Pull apart the Velcro on all of the straps on the Vibration Cushion.

3. CAUTION: Keep your face and eyes away from the elastic straps when stretching them for installation. Pull the top strap over the table bed and between the upper bed supports and the table bed. Insert one of the two center straps through the loop in the top strap and secure it to the other center strap using the Velcro strips. (Fig. 1)

4. Pull the two lower straps around the table bed and between the lower bed supports and the table bed. Fasten the Velcro strips together. (Fig. 2)

5. Position the Neck Arch Support so that the larger rounded edge is facing the top of the table bed. With the Neck Arch Support on top of the Vibration Cushion, stretch the elastic strap around the top of the table bed to secure it to the table. (Fig. 3) The strap and arch support position can be adjusted at the time of use. The larger rounded edge of the Neck Arch Support should be positioned so the larger rounded edge supports the natural curve of your neck, and your head should rest on the cushion, not the Neck Arch Support. (Fig. 4)

6. Connect the Neck Arch Support cord to the input jack at the top of the Vibration Cushion. (Fig. 5)

7. Attach the Controller Pouch to the A-frame of the inversion table by securing a Velcro strap around the rear leg above and below the spreader arm (Fig. 6)

8. Run the electrical cord from the Vibration Cushion through the secured Velcro straps of the Controller Pouch – this will help keep the cord out of the way during operation of the inversion table. Plug the adapter into a 120 volt AC outlet and plug the receptacle end into the input jack, located along the side of the cushion. (Fig. 7)

9. Connect the Controller cord to the Controller and place the Controller in the pouch. (Fig. 7) Secure the cord to the rear leg of the A-frame using the Velcro strap provided.

FOLLOW ALL INSTRUCTIONS REGARDING THE PROPER USE OF THE INVERSION TABLE.

OPERATING CONTROLLER (Fig. 8)

HEAT: Press the “heat” button to turn the infrared lights on and off.

VIBRATION:

1. Press the “power” button on the Controller to start the vibrating motors.

2. Press the “function” button to select vibration modes: tapping, up & down, wave, all motors, and random.

3. The vibration area can be selected by pressing the buttons “neck”, “upper back”, “lower back”, “lumbar” and “thighs”.

4. Press the “timer” button to select the amount of vibration time.

5. Press the “fast” or “slow” buttons to adjust the speed of the vibration motors.

6. Press the “high” or “low” buttons to adjust the desired intensity.

MAINTENANCE

TO CLEAN: Be sure to unplug the Vibration Cushion and allow it to cool prior to cleaning. Using a soft, slightly damp sponge, wipe only the surface. DO NOT allow the Vibration Cushion to contact or become immersed in water or any other liquid. NEVER clean the Vibration Cushion with brushes or abrasive cleaners, flammable fuels, glass/ furniture polish or paint thinner.

TO STORE: Place the Vibration Cushion in its original box or in a cool, dry place - use caution when storing so as not to damage the internal components. Do not wrap the power cord around the unit or attempt to hang the Vibration Cushion by the Controller cord. Take care to avoid contact with sharp or pointed objects that might puncture the fabric surface.

DO NOT attempt to repair the Vibration Cushion - there are no user serviceable parts. Contact Customer Relations for service.

1-YEAR LIMITED WARRANTY: This appliance is warranted against defects in materials and workmanship for one year from the date of purchase. Any problems arising from misuse, attempts at repair, dropping or extreme wear are not covered by this warranty. Refer to the warranty card for additional information about Warranty Service.

USA and Canada • STL International • 9902 162nd St. Ct. E. • Puyallup, WA 98375
Phone: 800-847-0143 Fax: 800-847-0188

International • Inversion International, Ltd. • PO Box AP 59245 • New Providence Island, Bahamas
info@inversioninternational.com • www.inversioninternational.com
Phone: 1-242-362-1001 Fax: 1-242-362-1002

© Copyright 2010 STL. International Law Prohibits Any Copying. LS-3000 1210-5
©2010 STL International, all rights reserved.

Fig. 1

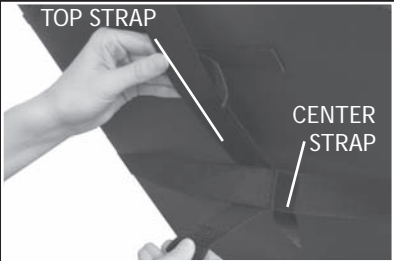


Fig. 2



Fig. 3



Fig. 4



Fig. 5



Fig. 6



Fig. 7



Fig. 8

