

SAMSUNG

LED TV

user manual

SERIES 4

4000

4050

Figures and illustrations in this User Manual are provided for reference only and may differ from actual product appearance. Product design and specifications may be changed without notice.

### Still image warning

Avoid displaying still images (such as jpeg picture files) or still image elements (such as TV channel logos, panorama or 4:3 image format, stock or news bars at screen bottom etc.) on the screen. Constant displaying of still pictures can cause ghosting of LED screen, which will affect image quality. To reduce risk of this effect, please follow below recommendations:

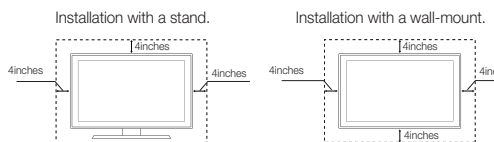
- Avoid displaying the same TV channel for long periods.
- Always try to display any image on full screen, use TV set picture format menu for best possible match.
- Reduce brightness and contrast values to minimum required to achieve desired picture quality, exceeded values may speed up the burnout process.
- Frequently use all TV features designed to reduce image retention and screen burnout, refer to proper user manual section for details.

### Securing the Installation Space

Keep the required distances between the product and other objects (e.g. walls) to ensure proper ventilation. Failing to do so may result in fire or a problem with the product due to an increase in the internal temperature of the product.

When using a stand or wall-mount, use parts provided by Samsung Electronics only.

- If you use parts provided by another manufacturer, it may result in a problem with the product or an injury due to the product falling.
- The appearance may differ depending on the product.
- Be careful when you contact the TV because some parts can be somewhat hot.



Country	Customer Care Center	Web Site
MEXICO	01-800-SAMSUNG (726-7864) Director: General Mariano Escobedo 476 Pto 8 Cdt. Anzures Delegación Miguel Hidalgo, Distrito Federal CP 11590	www.samsung.com/mx/support
ARGENTINE	0800-555-SAMS(7267) www.samsung.com.ar	www.samsung.com.ar
URUGUAY	0800-SAMS(7267) www.samsung.com.ar	www.samsung.com.ar
BRAZIL	0800-124-421 (Demos ocultas e pagadas) 4004-0000 (Capitais e grandes centros)	www.samsung.com/br/support
CHILE	800-SAMSUNG(726-7864) www.samsung.com/cl/support	www.samsung.com/cl/support
BOLIVIA	800-10-7260 Bogotá en el 600 12 72 Sin costo al todo el país 01 8000 112 112 Y desde tu celular 4726	www.samsung.com/co
COLUMBIA	800-SAMSUNG(726-7864) www.samsung.com/col/support	www.samsung.com/col/support
COSTA RICA	00-800-1-SAMSUNG (726-7864) www.samsung.com/cr/support	www.samsung.com/cr/support
DOMINICAN REPUBLIC	1-800-751-2676 www.samsung.com/dn/support	www.samsung.com/dn/support
ECUADOR	1-800-SAMSUNG (72-6786) www.samsung.com/latin/support	www.samsung.com/latin/support
EL SALVADOR	8000-SAMSUNG (726-7864) www.samsung.com/latin/support	www.samsung.com/latin/support
GUATEMALA	1-800-299-0033 www.samsung.com/latin/support	www.samsung.com/latin/support
HONDURAS	800-2791-9111 www.samsung.com/latin/support	www.samsung.com/latin/support
JAMAICA	1-800-SAMSUNG (726-7864) www.samsung.com/latin/support	www.samsung.com/latin/support
NICARAGUA	001-800-5077267 www.samsung.com/latin/support	www.samsung.com/latin/support
PANAMA	800-0101 www.samsung.com/latin/support	www.samsung.com/latin/support
PERU	0800-777-08 www.samsung.com/pe/support	www.samsung.com/pe/support
PUERTO RICO	1-800-682-3180 www.samsung.com/latin/support	www.samsung.com/latin/support
TRINIDAD & TOBAGO	1-800-SAMSUNG (726-7864) www.samsung.com/latin/support	www.samsung.com/latin/support
VENEZUELA	0-800-SAMSUNG (726-7864) www.samsung.com/ve/support	www.samsung.com/ve/support



© 2015 Samsung Electronics Co., Ltd. All rights reserved.

## Warning! Important Safety Instructions

Please read the safety instructions below before installing and using the product.

### CAUTION

**RISK OF ELECTRIC SHOCK. DO NOT OPEN.**  
CAUTION: TO REDUCE THE RISK OF ELECTRIC SHOCK, DO NOT REMOVE COVER (OR BACK). THERE ARE NO USER SERVICEABLE PARTS INSIDE. REFER ALL SERVICING TO QUALIFIED PERSONNEL.



This symbol indicates that high voltage is present inside. It is dangerous to make any kind of contact with any internal part of this product.



This symbol indicates that important literature concerning operation and maintenance has been included with this product.

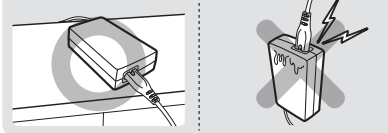
- The slots and openings in the cabinet and in the back or bottom are provided for necessary ventilation. To ensure reliable operation of this apparatus, and to protect it from overheating, these slots and openings must never be blocked or covered.
  - Do not cover the slots and openings with a cloth or other materials.
  - Do not block the slots and openings by placing this apparatus on a bed, sofa, rug or other similar surface.
  - Do not place this apparatus in a confined space, such as a bookcase or built-in cabinet, unless proper ventilation is provided.
- Do not place this apparatus near or over a radiator or heat register, or where it is exposed to direct sunlight.
- Do not place a vessel containing water (vases etc.) on this apparatus, as this can result in a risk of fire or electric shock.
- Do not expose this apparatus to rain or place it near water (near a bathtub, washbowl, kitchen sink, or laundry tub, in a wet basement, or near a swimming pool etc.). If this apparatus accidentally gets wet, unplug it and contact an authorized dealer immediately.
- Make sure to pull out the power cord from the outlet before cleaning.
- This apparatus uses batteries. In your community, there might be regulations that require you to dispose of these batteries properly to protect the environment. Please contact your local authorities for disposal or recycling information.
- Do not overload wall outlets, extension cords, or adaptors beyond their capacity, since this can result in fire or electric shock.
- Power-supply cords should be routed so that they are not likely to be walked on or pinched by items placed upon or against them. Pay particular attention to cords at the plug end, where connected to adaptors, and at the point where they exit from the apparatus.
- To protect this apparatus from a lightning storm, or when it is left unattended and unused for long periods of time, unplug it from the wall outlet and disconnect the antenna or cable system. This will prevent damage to the set due to lightning and power line surges.
- Before connecting the AC power cord to the DC adaptor outlet, make sure the voltage designation of the DC adaptor corresponds to the local electrical supply. (Depending on the model)
- Never insert anything metallic into the open parts of this apparatus. Doing so may create a danger of electric shock.
- To avoid electric shock, never touch the inside of this apparatus. Only a qualified technician should open this apparatus.
- Make sure to plug the power cord in until it is firmly inserted. Pull on the plug, not the cord, when removing the power cord from the outlet. Do not touch the power cord with wet hands.
- If this apparatus does not operate normally - in particular, if there are any unusual sounds or smells coming from it - unplug it immediately and contact an authorized dealer or service center.
- Be sure to pull the power plug out of the outlet if the TV is to remain unused or if you are to leave the house for an extended period of time (especially when children, elderly or disabled people will be left alone in the house).
  - Accumulated dust can cause an electric shock, an electric leakage, or a fire by causing the power cord to generate sparks and heat, or cause the insulation to deteriorate.
- Be sure to contact an authorized service center, when installing your set in a location with heavy dust, high or low temperatures, high humidity, chemical substances or where it will operate for 24 hours a day such as in an airport, a train station, etc. Failure to do so may cause serious damage to your set.
- Use only a properly grounded plug and receptacle.
  - An improper ground may cause electric shock or equipment damage. (Class I Equipment only).
- To turn off the apparatus completely, you must pull the power plug out of the wall socket. Consequently, the power plug should be readily accessible at all times.
- Do not allow children to hang onto the product.
- Store the accessories (batteries, etc.) in a location safely out of the reach of children.
- Do not install the product in an unstable location such as a shaky shelf, a slanted floor, or a location exposed to vibration.
- Do not drop or impart a shock to the product. If the product is damaged, disconnect the power cord and contact a service center.
- To clean the product, unplug the power cord from the power outlet and wipe the product using a soft cloth dipped in a small amount of water. Do not use any chemicals such as wax, benzene, alcohol, thinners, insecticide, air freshener, lubricant or detergent. This may damage the appearance or erase the printing on the product.
- Do not expose the apparatus to dripping or splashing.
- Do not dispose of batteries in a fire.
- Do not short circuit, disassemble, or overheat the batteries.
- There is a danger of explosion if you replace the batteries with the wrong type of battery. Replace only with the same or equivalent type.
- Make sure to store the AC/DC Adapter flat on a table or the floor. If you place the AC/DC Adapter so that it is hanging with the AC cord input facing upwards, water or other foreign substances could enter the Adapter and cause the Adapter to malfunction.
- WARNING - TO PREVENT THE SPREAD OF FIRE, KEEP CANDLES OR OTHER OPEN FLAMES AWAY FROM THIS PRODUCT AT ALL TIMES.



## Getting Started

### Accessories

- Remote Control & Batteries (AAA x 2)
- Warranty Card / Regulatory Guide
- Owner's Instructions
- Power Cord
- Wall Mount Adapter (4EA)
- AC/DC Adapter



### Input Cables (Sold Separately)

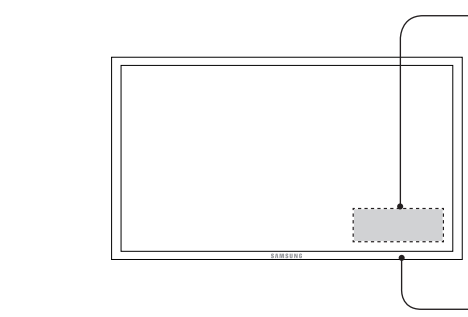
- Audio
- Composite (AV)
- Component
- Coaxial (RF)
- HDMI
- HDMI-DVI

Cable Plugs	Ports/Jacks
HDMI	
USB	
Optical	

Do not plug cables in upside down. Be sure to check the orientation of the plug before plugging it in.

### TV Controller

The TV's Controller on the bottom right side of the TV, lets you control the TV without the remote control.



The product color and shape may vary depending on the model.

You cannot input the numbers by pressing the TV's controller.

If you press it first, the control menu appears. You can select the function by pressing and holding the TV's controller.

With the TV's Controller, you cannot perform other operations except for turning the TV on or off, changing the channel, adjusting the volume, and switching the input source.

### Plug & Play (Initial Setup)

When you turn the TV on for the first time, a sequence of screens and on-screen prompts will assist you in configuring the TV's basic settings. Press the POWER button. **Plug & Play** is available only when the input source is set to TV. Set the initial setup following instructions that the TV guides.

Connecting the power cord and antenna. (refer to 'Connections')

### Fine Tune

(analog channels only)

If the reception is clear, you do not have to fine tune the channel, as this is done automatically during the search and store operation. If the signal is weak or distorted, fine tune the channel manually.

Fine tuned channels that have been saved are marked with an asterisk on the right-hand side of the channel number in the channel banner.

To reset the fine-tuning, select **Reset**.

## Picture Menu

### Mode

Select your preferred picture type.

When connecting a PC, you can only select **Entertain** and **Standard**.

**Dynamic:** Suitable for a bright room.

**Standard:** Suitable for a normal environment.

**Movie:** Suitable for watching movies in a dark room.

**Entertain:** Suitable for watching movies and games.

Only available when connecting a PC.

### Backlight / Contrast / Brightness / Sharpness / Color / Tint (G/R)

Your television has several setting options for picture quality control.

When connecting a PC, you can only make changes to **Backlight**, **Contrast**, **Brightness** and **Sharpness**.

### Picture Options

When connecting a PC, you can only make changes to the **Color Tone**, **Size**, and **HDMI Black Level**.

**Color Tone:** Cool makes the picture bluer (cooler). Warm makes the picture redder (warmer).

**Size:** Your cable box/satellite receiver may have its own set of screen sizes as well. However, we highly recommend you use 16:9 mode most of the time.

The menu is deactivated, when the H. 264 (1080p) DTV is being played.

**16:9:** Sets the picture to 16:9 wide mode.

**Zoom1:** Use for moderate magnification.

**Zoom2:** Use for a stronger magnification.

**Wide Fit:** Enlarges the aspect ratio of the picture to fit the entire screen.

4:3: Sets the picture to basic (4:3) mode.

Do not watch in 4:3 format for a long time. Traces of borders displayed on the left and right center of the screen may cause image retention (screen burn) which are not covered by the warranty.

**Screen Fit:** (DTV) Displays the full image without any cut-off when HDMI (720p / 1080i / 1080p) or Component (1080i / 1080p) signals are inputted.

HD (High Definition): 16:9 - 1080i/1080p (1920x1080), 720p (1280x720)

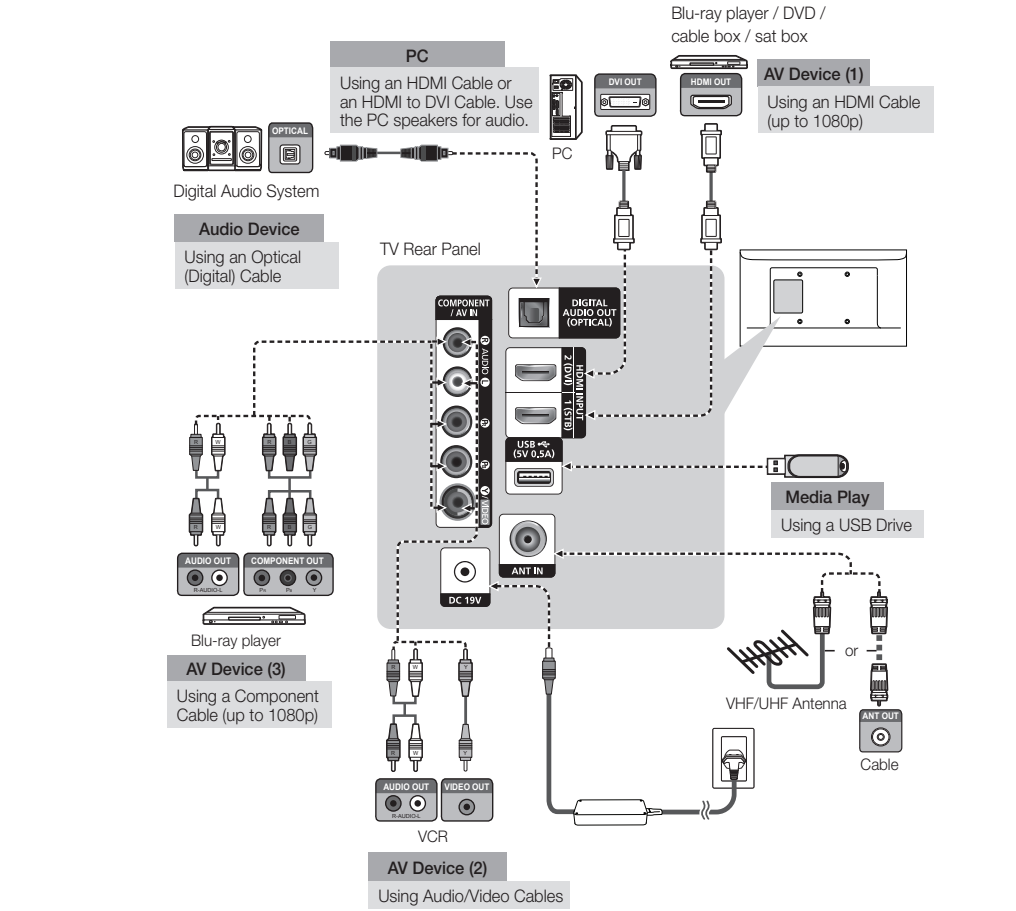
Settings can be adjusted and stored for each external device you have connected to an input on the TV.

Picture Size available by Input Sources:

Input Source	Picture Size
DTV, AV, Component (480i, 480p)	16:9, Zoom1, Zoom2, 4:3
DTV (1080i), Component (1080i, 1080p), HDMI (720p, 1080i, 1080p)	16:9, Wide Fit, 4:3, Screen Fit

## Connections

- For the best picture and audio quality, connect digital devices using an HDMI cable.
- If you connect an external device to the TV that uses an older version of HDMI, the video and audio may not work. If this occurs, ask the manufacturer of the device about the HDMI version and, if it is out of date, request an upgrade.
- Be sure to purchase a certified HDMI cable. Otherwise, the picture may not display or a connection error may occur.
- **PC/DVI AUDIO IN** input is not supported.
- For an HDMI to DVI cable connection, you must use the HDMI IN 2 (DVI) port.
- Connecting through the HDMI cable may not be supported depending on the PC.
- If an HDMI to DVI cable is connected to the HDMI IN 2 (DVI) port, the audio does not work.
- For Set-top box connection using HDMI cable, we highly recommend you to connect the HDMI IN 1 (STB) port.



## Changing the Input Source

### Source List

Use to select TV or an external input source such as a DVD player / Blu-ray player / cable box / STB satellite receiver.

1. Press the SOURCE button.

2. Select a desired external input source.

**TV / AV / Component / HDMI1 / HDMI2/DVI**

You can only choose external devices that are connected to the TV. In the **Source List**, connected inputs will be highlighted.

### How to use Edit Name

Edit Name lets you associate a device name to an input source. To access **Edit Name**, press the **TOOLS** button in **Source List**. Name the device connected to the input jacks to make your input source selection easier.

When connecting a PC to the HDMI IN 2(DVI) port with HDMI cable, you should set the TV to PC mode under **Edit Name**.

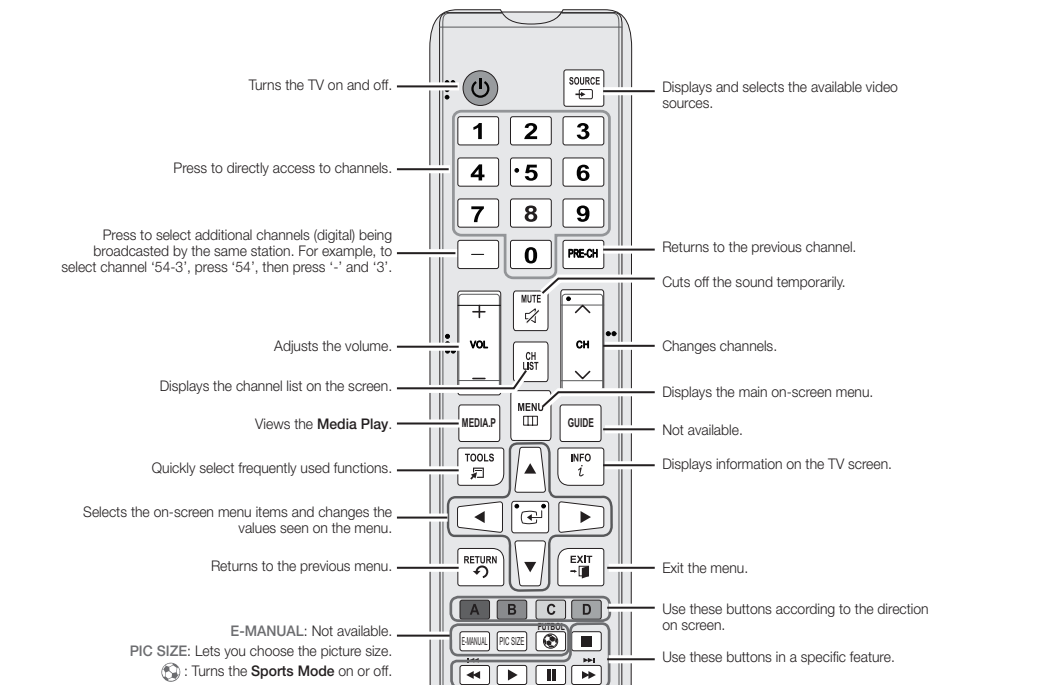
When connecting a PC to the HDMI IN 2(DVI) port with HDMI to DVI cable, you should set the TV to **DVI PC** mode under **Edit Name**.

When connecting an AV devices to the HDMI IN 2(DVI) port with HDMI to DVI cable, you should set the TV to **DVI** mode under **Edit Name**.

### Information

You can see detailed information about the connected external device.

## Remote Control



The button names above may differ from the actual names.

Some buttons on the remote control may not be available.

This remote control has Braille points on the Power, Channel, Volume, and Enter buttons and can be used by visually impaired persons.

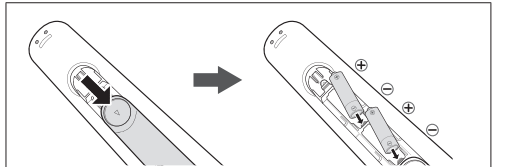
### Display Modes (HDMI/DVI Input)

Optimal resolution

4 series: 1366 x 768@60Hz

Mode	Resolution	Horizontal Frequency (kHz)	Vertical Frequency (Hz)	Pixel Clock Frequency (MHz)	Sync Polarity (H/V)	1366 x 768
BM	720 x 480	31.469	59.940	25.175	-/+	✓
	640 x 480	35.000	60.000	25.175	-/+	✓
	640 x 480	49.725	74.551	57.284	-/+	✓
MAC	1152 x 864	69.681	75.000	100.000	-/+	✓
	640 x 480	31.469	59.940	25.175	-/+	✓
	640 x 480	37.861	72.809	31.800	-/+	✓
	640 x 480	31.500	75.000	31.800	-/+	✓
	800 x 600	37.879	60.317	40.000	+/-	✓
	800 x 600	48.077	72.788	50.000	+/-	✓
	800 x 600	49.875	75.000	49.000	+/-	✓
	1024 x 768	48.363	60.004	65.000	-/+	✓
	1024 x 768	64.476	75.000	75.000	-/+	✓
	1024 x 768	60.003	75.009	78.750	+/-	✓
VESA DMT	1152 x 864	67.500	75.000	108.000	-/+	✓
	1280 x 1280	49.000	60.000	74.250	+/-	✓
	1280 x 800	49.752	59.810	63.000	-/+	✓
	1280 x 1024	63.981	60.000	108.000	+/-	✓
	1280 x 1024	74.078	75.000	138.000	+/-	✓
	1366 x 768	47.712	59.760	65.000	+/-	✓
	1440 x 900	55.937	59.967	105.000	-/+	✓
	1600 x 900PB	60.000	60.000	108.000	-/+	✓
	1680 x 1050	66.250	59.864	146.250	-/+	✓
	1920 x 1080	67.500	60.000	148.500	+/-	✓

### Installing batteries (Battery size: AAA)



### NOTE

- Use the remote control within 23 feet from TV.
- Bright light may affect the performance of the remote control. Avoid use when nearby fluorescent lights or neon signs.
- The Color and shape may vary depending on the model.



## Program Rating Lock

The **Program Rating Lock** feature automatically locks out programs that are deemed inappropriate for children. The user must enter a PIN (personal identification number) before any of the Program Rating Lock restrictions are set up or changed.

❗ **Program Rating Lock** is not available in **HDMI** or **Component** mode.

❗ The default PIN number of a new TV set is "0-0-0-0".

■ **Program Rating Lock:** You can block rated TV Programs.

■ **TV Parental Guidelines:** You can block TV programs depending on their rating. This function allows you to control what your children are watching.

■ **MPIAA Rating:** You can block movies depending on their MPIAA rating. The Motion Picture Association of America (MPIAA) has implemented a rating system that provides parents or guardians with advanced information on which films are appropriate for children.

■ **Canadian English:** You can block TV programs depending on their Anglophone Canadian.

■ **Canadian French:** You can block TV programs depending on their French Canadian rating.

■ **Downloadable U.S. Rating:** Parental restriction information can be used while watching DTV channels.

■ **Change PIN:** The Change PIN screen will appear. Choose any 4 digits for your PIN and enter it in **Enter New PIN**. Re-enter the same 4 digits in **Confirm New PIN**. When the Change PIN screen disappears, press the OK button. The TV has memorized your new PIN.

❗ If you forget the PIN, press the remote-control buttons in the following sequence, which resets the pin to "0-0-0-0": POWER (off) → MUTE → 8 → 2 → 4 → POWER (on)

## Caption

(On-Screen Text Messages)

■ **Caption:** You can switch the caption function on or off. If captions are not available, they will not be displayed on the screen.

❗ The **Caption** feature does not work in **Component** or **HDMI** mode.

■ **Caption Mode:** You can select the desired caption mode.

**Default / CC1-CC4 / Text1-Text4:** (analog channels only) The Analog Caption function operates in either analog TV channel mode or when a signal is supplied from an external device to the TV. (Depending on the broadcasting signal, the Analog Caption function may or may not work with digital channels.)

**Default / Service1-Service6 / CC1-CC4 / Text1-Text4:** (digital channels only) The Digital Captions function works with digital channels.

❗ **Service1-6** may not be available in digital caption mode depending on the broadcast.

■ **Digital Caption Options:** (digital channels only)

**Size:** Options include Default, Small, Standard and Large. The default is Standard.

**Font Style:** Options include Default and Styles 0 to 7. The default is Style 0.

**Foreground Color:** Options include Default, White, Black, Red, Green, Blue, Yellow, Magenta and Cyan. You can change the color of the letter. The default is White.

**Background Color:** Options include Default, White, Black, Red, Green, Blue, Yellow, Magenta and Cyan. You can change the background color of the caption. The default is Black.

**Foreground Opacity:** This adjusts the opacity of text. Options include Default, Transparent, Translucent, Solid and Flashing.

**Background Opacity:** This adjusts the opacity of the caption background. Options include Default, Transparent, Translucent, Solid and Flashing.

**Return to Default:** This option sets each Size, Font Style, Foreground Color, Background Color, Foreground Opacity and Background Opacity to its default.

❗ **Digital Caption Options** are available only when **Default** and **Service1-Service6** can be selected in **Caption Mode**.

❗ The Foreground and Background cannot be set to have the same color.

## Boot Logo

Enable/disable displaying the logo while the TV starts up.

## Eco Solution

■ **Energy Saving:** This adjust the brightness of the TV in order to reduce power consumption. If you select **Picture Off**, the screen is turned off, but the sound remains on. Press any button except volume button to turn on the screen.

■ **No Signal Power Off :** Sets how quickly the TV switches to standby mode if no picture is being received.

❗ Disabled when the PC is in power saving mode.

■ **Auto Power Off:** The TV will be automatically turned off when no user operation is received for 4 hours.

## Auto Protection Time

If the screen remains idle with a still image for a certain period of time defined by the user, the screen saver is activated to prevent the formation of ghost images on the screen.

## Support Menu

## Self Diagnosis

■ **Picture Test:** Use to check for picture problems. If the problem continues to occur, check the color pattern.

■ **Sound Test:** Use the built-in melody sound to check for sound problems.

■ **Signal Strength:** (digital channels only) An HD channel's reception quality is either perfect or the channels are unavailable. Adjust your antenna to increase signal strength.

■ **Reset:** Reset all settings to the factory defaults.

❗ The PIN input screen appears before the setup screen.

❗ Enter your 4-digit PIN. Change the PIN using the **Change PIN** option.

## Software Upgrade

**Software Upgrade** can be performed by downloading the latest firmware from samsung.com to a USB memory device.

## Use Mode

You can turn the TV into a display model for retail environments by setting Use Mode to **Store Demo**.

❗ For all other uses, select **Home Use**.

❗ With **Store Demo**, some functions are disabled, and the TV automatically resets itself after a preset amount of time.

## HD Connection Guide

Refer to this information when connecting external devices to the TV.

## Contact Samsung

View this information when your TV does not work properly or when you want to upgrade the software. You can find information regarding our call centers and how to download products and software.

## Application Menu

## Using the Media Play

Enjoy photos, music and/or movie files saved on a USB Mass Storage Class (MSC) device.



## Connecting a USB Device

- Turn on your TV.
- Connect a USB device containing photo, music and/or movie files to the USB jack on the side of the TV.
- When USB is connected to the TV, you can select **Media Play (USB)** in **Applications** menu.

## Using the Media Play Menu

- Press the MENU button. Press the ▲ or ▼ button to select **Applications**, then press the ENTER button.
- Press the ▲ or ▼ button to select **Media Play (USB)**, then press the ENTER button.
- Press the ◀ or ▶ button to select an icon (**Videos**, **Music**, **Photos**, **Settings**), then press the ENTER button.

❗ It might not work properly with unlicensed multimedia files.

❗ Need-to-Know List before using **Media Play (USB)**

❗ Supported file systems are FAT and NTFS.

❗ Certain types of USB Digital camera and audio devices may not be compatible with this TV.

■ **Media Play** only supports USB Mass Storage Class (MSC) devices. MSC is a Mass Storage Class Bulk-Only Transport device. Examples of MSC are Thumb drives and Flash Card Readers. Devices should be connected directly to the TV's USB port. USB HDD is not supported.

❗ Before connecting your device to the TV, please back up your files to prevent them from damage or loss of data. SAMSUNG is not responsible for any data file damage or data loss.

❗ A USB device that requires high power (more than 0.5A) may not be supported.

❗ Do not disconnect the USB device while it is loading.

❗ The higher the resolution of the image, the longer it takes to display on the screen.

❗ The maximum supported JPEG resolution is 15360 x 8640 pixels.

❗ If a file is corrupted or the TV does not support the file type, the "Not Supported File Format" message appears.

❗ The TV cannot play MP3 files with DRM that have been downloaded from a for-pay site. Digital Rights Management (DRM) is a technology that supports the creation, distribution, and management of digital content in an integrated and comprehensive way, including protecting the rights and interests of content providers, preventing illegal copying of contents, and managing billings and settlements.

❗ PTP device is not supported.

❗ If an over-power warning message is displayed while you are connecting or using a USB device, the device may not be recognized or may malfunction.

❗ If the TV has no input during the time set in **Auto Protection Time**, the Screensaver will run.

❗ The power-saving mode of some external hard disk drives may be released automatically when your connect them to the TV.

❗ If you use a USB extension cable, the TV may not recognize the USB device or may not be able to read the files on the device.

❗ If a USB device connected to the TV is not recognized, the list of files on the device is computed, or a file in the list is not played, connect the USB device to a PC, format the device, and check the connection.

❗ If a file you deleted from the PC is still found when you run **Media Play**, use the "Empty the Recycle Bin" function on the PC to permanently delete the file.

❗ **Photos** only supports sequential jpeg format.

❗ The scene search and thumbnail functions are not supported in the **Videos**.

❗ If the number of files and folders saved on a USB storage device is approximately over 4000, the files and folders may not appear and some folders may not be opened.

❗ The maximum displayed number of files, including sub folders, in one folder of USB storage device is 2000.

❗ The media may not be playing smoothly when using the device lower than USB 2.0.

## Videos

- Press the ◀▶ buttons to select **Videos**, then press the ENTER button in the **Media Play** menu.
- Press the ◀▶▶▶▶▶ buttons to select the desired video in the file list.
- Press the ENTER button or [▶] (Play) button.
  - The selected file is displayed on the top with its playing time.
  - If video time information is unknown, playing time and the progress bar are not displayed.
  - During video playback, you can search using the ◀▶ buttons.
  - In this mode, you can play movie clips contained in a game, but you cannot play the game itself.

❗ Supported Subtitle Formats

Name	File extension
MPEG-4 timed text	.ttxt
SAMI	.sami
SubRip	.art
SubViewer	.sub
Micro DVD	.sub or .txt
SubStation Alpha	.ssa
Advanced SubStation Alpha	.ass

- Internal

Name	Container	Format
Xsub	AVI	Picture Format
SubStation Alpha	MKV	Text Format
Advanced SubStation Alpha	MKV	Text Format
SubRip	MKV	Text Format
MPEG-4 Timed text	MP4	Text Format

## Supported Video Formats

File Extension	Container	Video Codec	Resolution	Frame/progress	Bit rate (Mbps)	Audio Codec
*.avi		Motion JPEG	640x480		8	
*.m1v		H.264 BP/ MP/H-P				
*.wmv		H.264 BP / MP/H-P				
*.mp4	AVI	MKV	DivX 3.11 / 4 / 5 / 6			AC3 LPCM ADPCM (IMA, MS)
*.mov	ASF	MP4	MPEG4 SP/ ASP			AAC HE-AAC
*.3gp	3GP	MVC	Window			WMA DO
*.m3g	M3G	FLV	MPEG4 MP9 (Core, LBR)			G.711(A, Law, µ-Law)
*.ts	VRO	TS	MPEG2			
*.p	VOB	PS				
*.flv	PS					
*.vob						
*.avi		MPEG1				
*.divx						
*.webm	WebM	VP8	1920x1080	6-30	20	Vorbis

## Other Restrictions

- Codes may not function properly if there is a problem with the content.
- Video content does not play or does not play correctly if there is an error in the content or container.
- Sound or video may not work if they have standard bit rates/frame rates above the TV's compatibility ratings.
- If the Index Table is has an error, the Seek (Jump) function will not work.
- When playing video over a network connection, the video may not play smoothly because of data transmission speeds.
- Some USB/digital camera devices may not be compatible with the TV.
- While the TV is playing a video at the bit rate of 10 Mbps or higher, the menu screens may be displayed slowly.

## Video Decoder

Supports up to H.264, Level 4.1  
H.264 FMO / ASO / RS, VC1 / AP L4 are not supported.  
GMC 2 or above is not supported.

## Audio Decoder

WMA 10 Pro supports up to 5.1 channels. Supports up to the M2 profile. WMA lossless audio is not supported.  
QCELP and AMR NB/WB are not supported.  
Vorbis is supported for up to 2 channels.  
Dolby Digital Plus is supported for up to 5.1 channels.  
The DTS LBR codec is only available for MKV / MP4 / TS containers.

## Music

- Press the ◀▶ buttons to select **Music**, then press the ENTER button in the **Media Play** menu.
- Press the ◀▶▶▶▶▶ buttons to select the desired Music in the file list.
- Press the ENTER button or [▶] (Play) button.
  - During music playback, you can search using the ◀▶ buttons.
  - [◀◀] (REW) and [▶▶] (FF) buttons do not function during play.
  - Only displays the files with MP3 file extensions. Other file extensions are not displayed, even if they are saved on the same USB device.
  - If the sound is abnormal when playing MP3 files, adjust the **Equalizer** in the **Sound** menu. (An over-modulated MP3 file may cause a sound problem.)

## Photos

- Press the ◀▶ buttons to select **Photos**, then press the ENTER button in the **Media Play** menu.
- Press the ◀▶▶▶▶▶ buttons to select the desired photo in the file list.
- Press the ENTER button or [▶] (Play) button.
  - NOTE
    - While a photo list is displayed, press the [▶] (Play) / ENTER button on the remote control to start the slide show.
    - All files in the file list section will be displayed in the slide show.
    - During the slide show, files are displayed in order.
    - During the slide show, you can adjust the slide show speed using [◀◀] (REW) or [▶▶] (FF) button.
  - You can move to other file using the ◀▶ buttons.

## Supported Photo Formats

Image	Photo	Resolution
JPEG	Base-line	15360 x 8704
	Progressive	1024 x 768

## Other Restrictions

CMYK and YCCCK Color space JPEGs are not supported.

## Playing Multiple Files

- Playing selected video/music/photo files**
  - Press the Yellow button in the file list to select the desired file.
  - Repeat the above operation to select multiple files.
- NOTE
  - The ✓ mark appears to the left of the selected files.
  - To cancel a selection, press the Yellow button again.
  - To deselect all selected files, press the TOOLS button and select **Deselect All**.
- Press the TOOLS button, and then select **Play Selected Contents**.

## Playing the video/music/photo file group

- While a file list is displayed, move to any file in desired group.
- Press the TOOLS button, and then select **Play Folder**.

## Media Play - Additional Functions

## Videos/Music/Photos Play Option menus

When playing a file, press the TOOLS button.

Category	Operation	Videos	Music	Photos
Title	You can move the other file directly.	✓		
Repeat Mode	You can play movie and music files repeatedly.	✓	✓	
Picture Size	You can adjust the picture size to your preference.	✓		
Picture Mode	You can adjust the picture setting.	✓	✓	✓
Sound Mode	You can adjust the sound setting.	✓	✓	✓
Subtitle Settings	You can play the video with Subtitles. This function only works if the subtitles are the same file name as the video.	✓		
Audio Format	You can select the digital audio output format.	✓		
Audio Language	You can change the audio language if the video has more than one language.	✓		
Stop Slide Show / Start Slide Show	You can start or stop a Slide Show.			✓
Slide Show Speed	You can select the slide show speed during the slide show.			✓
Background Music	You can set and select background music when watching a Slide Show.		✓	
Zoom	You can zoom into images in full screen mode.			✓
Rotate	You can rotate images in full screen mode.			✓
Information	You can see detailed information about the played file.	✓	✓	✓

## Using the Sports Mode

## Sports Mode

This mode provides optimised condition for watching sports games.

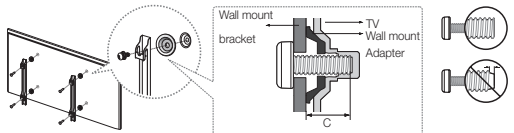
❗ When the **Sports Mode** is **On**, the picture and sound modes are set to **Stadium** automatically.

## Other Information

## Installing the Wall Mount Kit

The wall mount kit (sold separately) allows you to mount the TV on the wall.

For detailed information on installing the wall mount, see the instructions provided with the wall mount items. Contact a technician for assistance when installing the wall mount bracket. Samsung Electronics is not responsible for any damage to the product or injury to yourself or others if you elect to install the wall mount on your own.



❗ Standard dimensions for wall mount kits are shown in the table below.

❗ When purchasing our wall mount kit, a detailed installation manual and all parts necessary for assembly are provided.

❗ Do not use screws that do not comply with the VESA standard screw specifications.

❗ Do not use screws that are longer than the standard dimension or do not comply with the VESA standard screw specifications. Screws that are too long may cause damage to the inside of the TV set.

❗ For wall mounts that do not comply with the VESA standard screw specifications, the length of the screws may differ depending on the wall mount specifications.

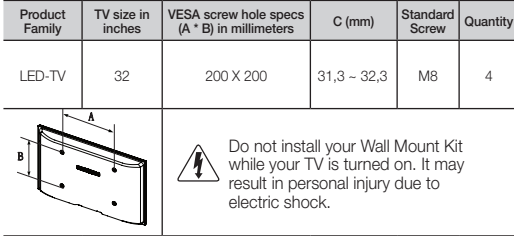
❗ Do not fasten the screws too firmly. This may damage the product or cause the product to fall, leading to personal injury. Samsung is not liable for these kinds of accidents.

❗ Samsung is not liable for product damage or personal injury when a non-VESA or non-specified wall mount is used or the consumer fails to follow the product installation instructions.

❗ Do not mount the TV at more than a 15 degree tilt.

❗ Always have two people mount the TV on a wall.

Product Family	TV size in inches	VESA screw hole specs (A * B) in millimeters	C (mm)	Standard Screw	Quantity
LED-TV	32	200 X 200	31.3 - 32.3	M8	4



## Specifications

Environmental Considerations	
Operating Temperature	50°F to 104°F (10°C to 40°C)
Operating Humidity	10% to 80%, non-condensing
Storage Temperature	-4°F to 113°F (-20°C to 45°C)
Storage Humidity	5% to 95%, non-condensing
Model Name	UN32J4000 / UN32J4050
Display Resolution	1366 x 768
Screen Size (Diagonal)	32" Class (31.5" measured diagonally)
Sound Output	10 W
Dimensions (W x H x D)	
Body	29.3 x 17.4 x 2.7 inches (745.5 x 442.2 x 69.0 mm)
With stand	29.3 x 18.2 x 5.9 inches (745.4 x 463.1 x 150.5 mm)
Weight	
Without Stand	8.1 lbs (3.7 kg)
With Stand	8.3 lbs (3.8 kg)
Power Requirements (Mexico Only)	DC 19V
Power Consumption (Mexico Only)	40 W

❗ Design and specifications are subject to change without prior notice.

❗ The actual appearance of the TV may differ from the images in this manual, depending on the model.

❗ For information about your TV's power requirements and more about power consumption, refer to the label attached to the product.

❗ Typical power consumption is measured according to Energy Star Program requirements for televisions.