



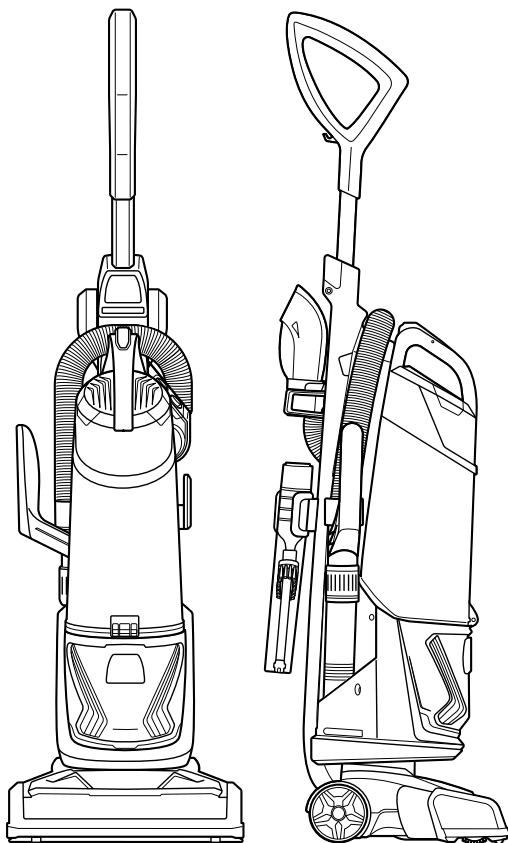
POWERGLIDE® LIFT-OFF® PET PLUS Vacuum

USER GUIDE
2043 SERIES



More of a video person? Look for this icon and go online for an instructional how-to video at

www.BISSELL.com



IMPORTANT SAFETY INSTRUCTIONS

READ ALL INSTRUCTIONS BEFORE USING YOUR UPRIGHT VACUUM.

Always connect to a polarized outlet (one slot is wider than the other). Unplug from outlet when not in use and before conducting maintenance. When using an electrical appliance, basic precautions should be observed, including the following:

WARNING

TO REDUCE THE RISK OF FIRE, ELECTRIC SHOCK, OR INJURY:

- » Do not leave vacuum cleaner when it is plugged in. Unplug from outlet when not in use and before servicing.
- » Do not use outdoors or on wet surfaces.
- » Do not allow to be used as a toy. Close attention is necessary when used by or near children.
- » Do not use for any purpose other than described in this User's Guide. Use only manufacturer's recommended attachments.
- » Do not use with damaged cord or plug. If appliance is not working as it should, has been dropped, damaged, left outdoors, or dropped into water, have it repaired at an authorized service center.
- » Do not pull or carry by cord, use cord as a handle, close a door on cord, or pull cord around sharp edges or corners. Do not run appliance over cord. Keep cord away from heated surfaces.
- » Do not unplug by pulling on cord. To unplug, grasp the plug, not the cord.
- » Do not handle plug or vacuum cleaner with wet hands.
- » Do not put any object into openings. Do not use with any opening blocked; keep openings free of dust, lint, hair, and anything that may reduce air flow.
- » Keep hair, loose clothing, fingers, and all parts of body away from openings and moving parts.
- » Turn off all controls before plugging or unplugging vacuum cleaner.
- » Do not use to pick up flammable or combustible materials (lighter fluid, gasoline, kerosene, etc.) or use in areas where they may be present.
- » Use extra care when cleaning on stairs.
- » Do not use vacuum cleaner in an enclosed space filled with vapors given off by oil base paint, paint thinner, some moth proofing substances, flammable dust, or other explosive or toxic vapors.
- » Do not use to pick up toxic material (chlorine bleach, ammonia, drain cleaner, etc.).
- » Do not pick up anything that is burning or smoking, such as cigarettes, matches, or hot ashes.
- » Do not use without filters in place.

- » Do not pick up hard or sharp objects such as glass, nails, screws, coins, etc.
- » Use only on dry, indoor surfaces.
- » Keep appliance on a level surface.
- » Do not carry the vacuum cleaner while it is running.
- » Unplug before connecting or disconnecting the Pet TurboEraser® Tool.

NOTICE

With brushroll on, do not allow cleaner to sit in one location for an extended period of time, as damage to floor can result.

NOTICE

The brush roll continues to rotate while using your vacuum for above floor cleaning. To prevent carpet damage, turn the brush roll off and do not lean on vacuum or tilt forward.

THIS APPLIANCE HAS A POLARIZED PLUG

To reduce the risk of electric shock, this appliance has a polarized plug (one blade is wider than the other). This plug will fit in a polarized outlet only one way. If the plug does not fit fully in the outlet, reverse the plug. If it still does not fit, contact a qualified electrician to install a proper outlet. Do not change the plug in any way.

SAVE THESE INSTRUCTIONS FOR FUTURE USE

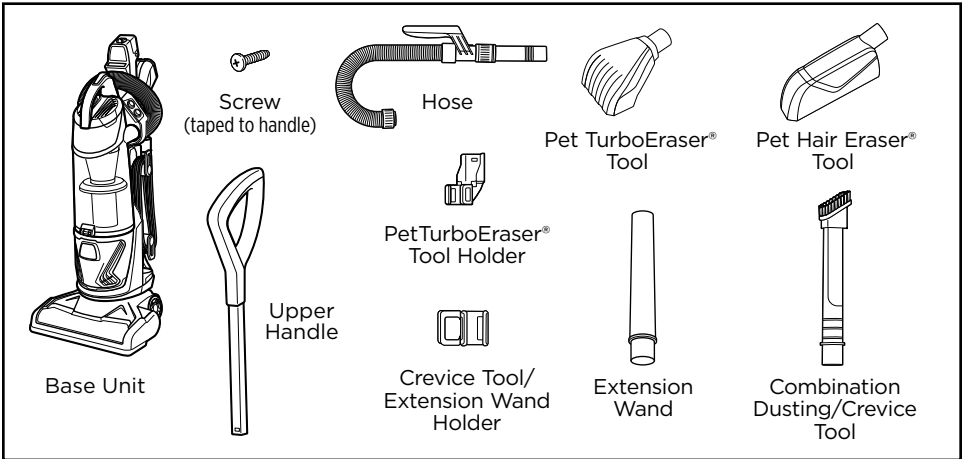
This model is for household use only.

Thanks for buying a BISSELL vacuum!

We love to clean and we're excited to share one of our innovative products with you. We want to make sure your vacuum works as well as it does today for years to come, so this guide has tips on using (pages 6-7), maintaining (pages 7-9), and if there is a problem, troubleshooting (page 10).

In just a few simple assembly steps, you'll be ready to vacuum. Flip to page 5 and let's get started!

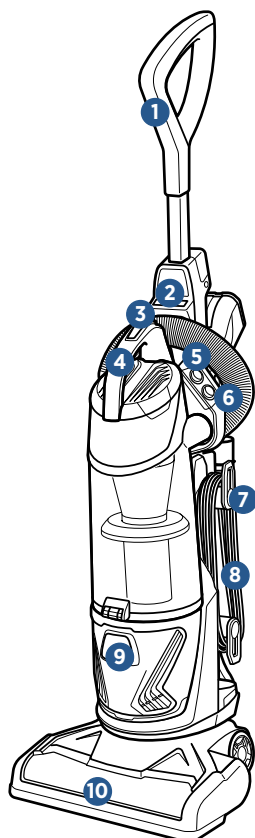
What's In The Box?



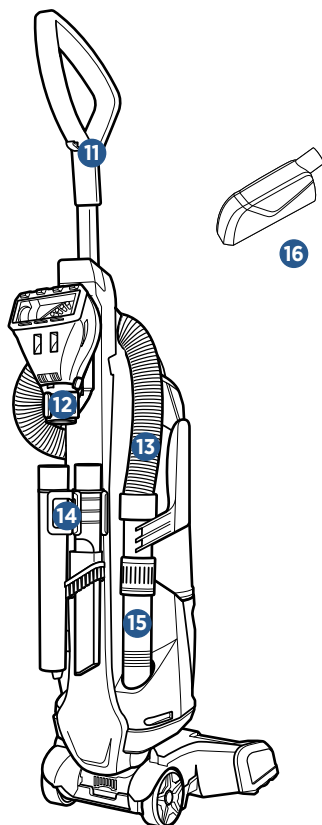
NOTE: Standard accessories may vary by model. To identify what should be included with your purchase, please refer to the "Carton Contents" list located on the carton top flap.

Safety Instructions.....	2	Troubleshooting	10
Product View.....	4	Warranty	11
Assembly	5	Service.....	11
Operations	6-7	Product Registration.....	12
Maintenance & Care	7-9	Parts & Supplies	12

Getting to Know Your Vacuum



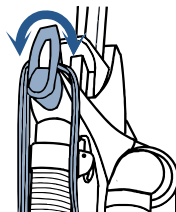
1. Handle
2. Lift-Off Canister Release Button
3. Dirt Tank Release Button
4. Carry Handle
5. Brush Roll Power Switch
6. Power Switch
7. Quick Release® Cord Wrap
8. Power Cord
9. Filter Cover (Pre-Motor and Post-Motor Filters are located under Filter Cover)



10. Brush Roll
11. Cord Clip
12. Pet TurboEraser® Tool Holder with Tool
13. Stretch Hose
14. Crevice Tool & Extension Wand Holder with Tools
15. Hose Wand Base
16. Pet Hair Eraser® Tool (does not store on unit; only available select models)

Cord Release and Storage

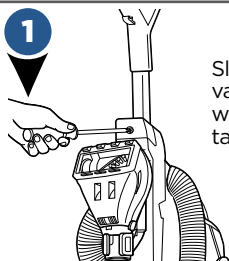
Twist Cord Release down to quickly remove cord



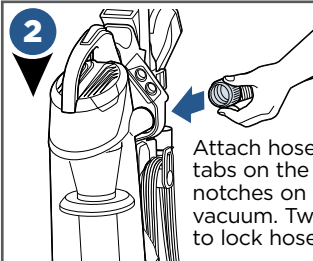
Assembly

WARNING

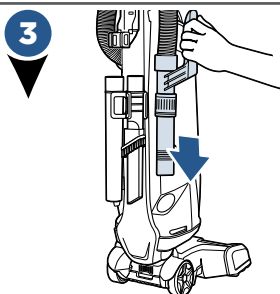
Do not plug in your vacuum until you are familiar with all instructions and operating procedures.



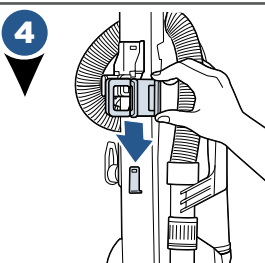
1
Slide handle into vacuum base. Attach with the screw that is taped to the handle.



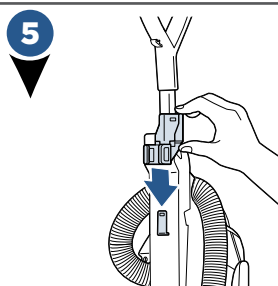
2
Attach hose by lining the tabs on the cuff with the notches on the back of vacuum. Twist clockwise to lock hose into place.



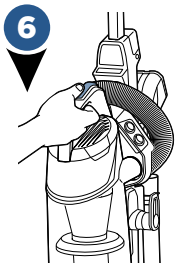
3
Push handle end into base of vacuum on opposite side.



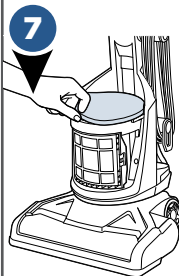
4
Slide the Crevice Tool/Extension Wand Holder down onto the middle of the back of base.



5
Slide the Pet TurboEraser® tool holder down on the top back of the base.



6
To use your optional Febreze® filter (included), press the tank release button and pull dirt tank away from vacuum.

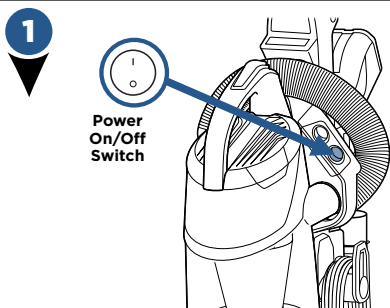


7
Remove the black/yellow foam filter and replace with the black Febreze® filter. Be sure to place the Febreze® filter last, covering the mesh filter. Place dirt container back on vacuum.

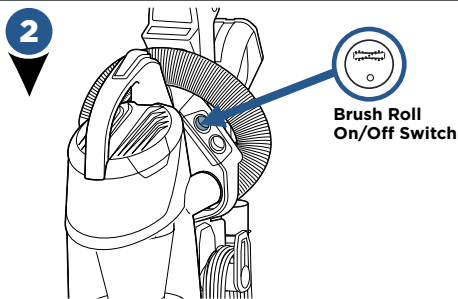
PowerBrush Switch

WARNING

Before using your vacuum, make sure that the dirt container is in locked position and that all filters, both pre and post-filters are in place. DO NOT operate your vacuum without these filters.



Turn vacuum on by pressing Power Switch on (I - ON and O - OFF).

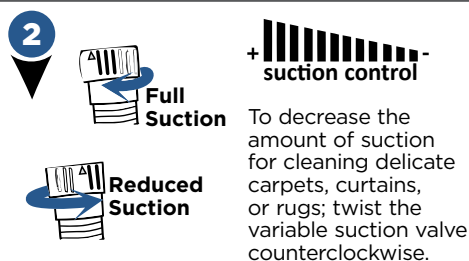
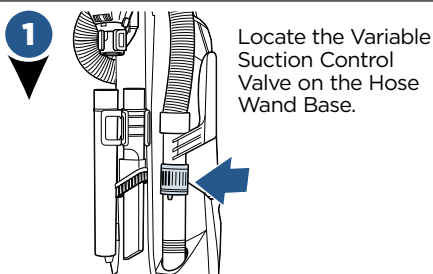


Press the Brush Roll switch to run the PowerBrush for carpet cleaning (brush roll is on when light on switch is illuminated).

NOTE: The brush roll will automatically shut off when vacuum is locked in upright position, recline to reactivate.

NOTE: Turn the Brush Roll OFF when vacuuming hard or delicate surfaces that may be caught by the rotating brush. This could include hard wood, tiled floors, small area rugs or frieze carpets that have long delicate fibers or threads.

Adjusting the Variable Suction

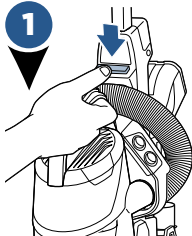


NOTE: The vacuum will come with the Variable Suction Valve closed for full suction power.

Above Floor Cleaning

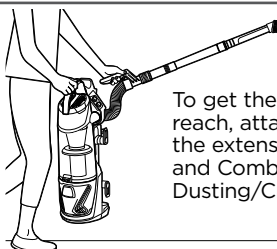


1



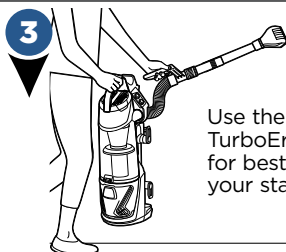
Clean stairs or furniture easily with the removable canister. Push the green button to remove and attach desired tool.

2



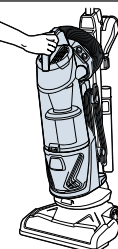
To get the most reach, attach both the extension wand and Combination Dusting/Crevice Tool.

3



Use the Pet TurboEraser® tool for best results on your stairs.

4



Replace the canister back on vacuum by aligning the front with the base of vacuum, then lean canister back and lock into place.

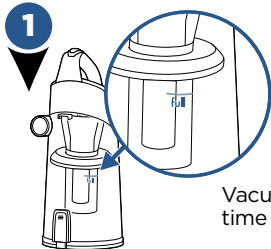
Emptying the Dirt Tank



WARNING

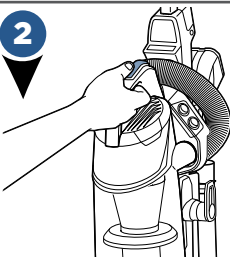
To reduce the risk of electrical shock, turn power switch off and disconnect polarized plug from electrical outlet before performing maintenance or troubleshooting checks.

1



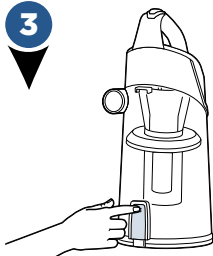
Vacuum tank is full, time to empty!

2



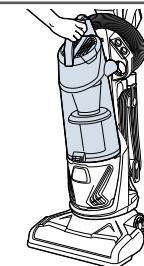
Press tank release button, grab the handle to pull dirt container away from vacuum.

3



Holding dirt container over a trash bin, press tank empty button.

4



Close bottom of container and place back on the vacuum. Be sure you place the front of the tank first and push back to "click" into place.

Cleaning Inner Cyclone



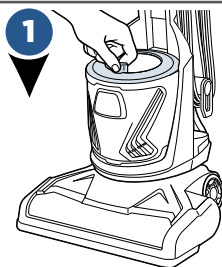
- 1 With dirt container off vacuum base, push the empty tank button and twist counter-clockwise to remove the separator and pull down.
- 2 Tap separator against inside of trash bin and rinse with warm water if necessary. Be sure to let it completely dry before placing back in the dirt container.
- 3 Place separator back in, being sure to align each tab on either side of the top of separator with the notches inside the top of the dirt container.

Cleaning Filters

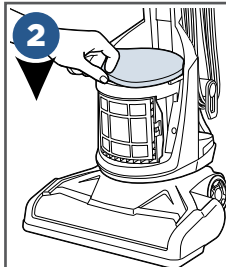


WARNING

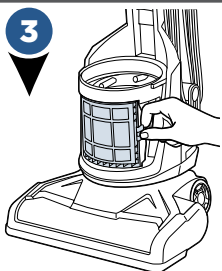
Do not operate vacuum with damp or wet filters, as well as without filters or the Dirt Container in place. Allow components to dry before reassembling the Dirt Container.



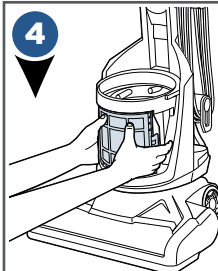
With vacuum unplugged, remove the tank and lift up on the tab attached to the filter cover.



There are 2 filters here; one foam filter on top and a thinner fiber filter; both are washable.



Remove post-motor filter located on the front of the vacuum underneath the filter cover. If it appears dirty, remove the filter and gently tap the filter on the edge of a waste basket.



Replace the post-motor filter by pushing it straight back, clicking each side.

NOTE: The post-motor filter is a pleated filter. This filter is not washable and must be replaced when it becomes dirty.

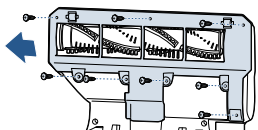
Parts & Supplies

For Parts and Supplies, go to www.BISSELL.com and enter your model number in the search field.

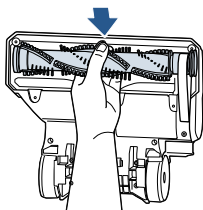
Replace Belt & Brush



- 1** Unplug vacuum, turn over and unscrew 8 Silver Phillips head screws to remove bottom cover.



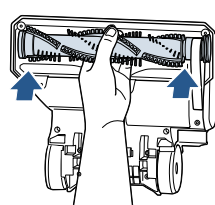
- 2** Pull roller straight out and slide belt off brush roll and motor gear.



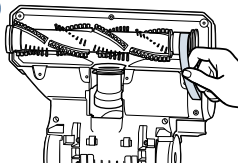
- 3** Inspect brush roll by placing it on its end and spin. The brush roll should spin freely, multiple times by one flick. If it doesn't, replace brush roll. Inspect belt, replace if it appears damaged.



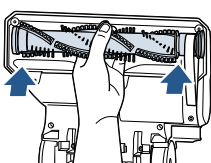
- 4** Place belt back on brush roll.



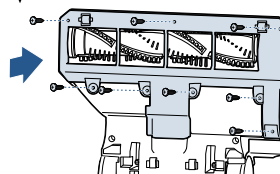
- 5** Pinch belt around brush roll & hook back around the silver motor gear.



- 6** Rotate brush roll into place and line up end caps.

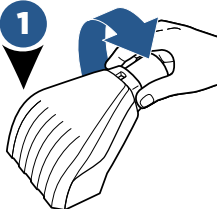


- 7** Re-attach bottom cover with 8 screws.

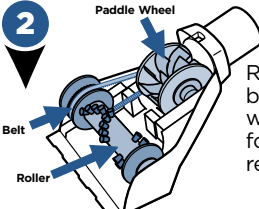


Maintain the Pet TurboEraser® Tool

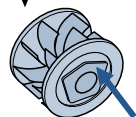
- 1** Twist gray collar counter-clockwise, until slot appears, and then separate faceplate.



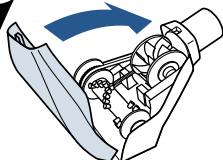
- 2** Remove brush roll, belt, and paddle wheel. Inspect for damages and replace if necessary.



- 3** To reassemble, align two clips on each end of paddle wheel with belt on and pop back into place. Replace brush roll with belt, making sure all parts are aligned correctly.



- 4** To put faceplate back on, align the tabs in the top of the cover and place it down to "click" into place.



Troubleshooting

WARNING

To reduce the risk of electric shock, turn power switch off and disconnect plug from electrical outlet before performing maintenance or troubleshooting checks.

Problem	Possible causes	Remedies
Vacuum cleaner won't turn on	Power cord not plugged in	Check electrical plug
	Blown fuse/tripped breaker	Check/replace fuse or reset breaker
No power at rotating floor brush	Pod is not securely seated	Remove pod and replace, making sure that it "clicks" into place
	Brush switch turned to "OFF"	Make sure brush switch is in "ON" position
	Vacuum is in upright position	Recline vacuum to operate brush
Vacuum cleaner won't pick up dirt	Hose not attached to suction opening	Grasp quick reach handle and firmly push hose wand onto the suction opening
	Crack or hole in hose	Check hose and replace if needed
	Broken or worn drive belt	Replace drive belt, see page 9
	Rotating floor brush bristles worn	Replace brush
	Rotating floor brush jammed	Remove brush and clean debris from brush ends
	Clog in vacuum	Check for debris build-up or clogs in the inner tank, hose and foot/lower hose
	Dirt container full	Empty dirt container
	Dirt container or secondary cyclone not installed properly	Position correctly and lock in place
	Filters are dirty	Check and clean pre-motor and post-motor filters, see page 8
Visible dirt escaping from cleaner	Dirt container full	Empty dirt container
	Filters or secondary cyclone missing or installed incorrectly	Check secondary cyclone, pre-motor and post-motor filters for correct installation
	Dirt container installed incorrectly	Pull out and re-insert dirt container correctly

Warranty

This warranty gives you specific legal rights, and you may also have other rights which may vary from state to state. If you need additional instruction regarding this warranty or have questions regarding what it may cover, please contact BISSELL Consumer Care by E-mail, telephone, or regular mail as described below.

Limited Five-Year Warranty

Subject to the *EXCEPTIONS AND EXCLUSIONS identified below, upon receipt of the product BISSELL will repair or replace (with new or remanufactured components or products), at BISSELL's option, free of charge from the date of purchase by the original purchaser, for five years any defective or malfunctioning part.

See information below on "If your BISSELL product should require service".

This warranty applies to product used for personal, and not commercial or rental service. This warranty does not apply to fans or routine maintenance components such as filters, belts, or brushes. Damage or malfunction caused by negligence, abuse, neglect, unauthorized repair, or any other use not in accordance with the User's Guide is not covered.

BISSELL IS NOT LIABLE FOR INCIDENTAL OR CONSEQUENTIAL DAMAGES OF ANY NATURE ASSOCIATED WITH THE USE OF THIS PRODUCT. BISSELL'S LIABILITY WILL NOT EXCEED THE PURCHASE PRICE OF THE PRODUCT.

Some states do not allow the exclusion or limitation of incidental or consequential damages, so the above limitation or exclusion may not apply to you.

***EXCEPTIONS AND EXCLUSIONS FROM THE TERMS OF THE LIMITED WARRANTY**
THIS WARRANTY IS EXCLUSIVE AND IN LIEU OF ANY OTHER WARRANTIES EITHER ORAL OR WRITTEN. ANY IMPLIED WARRANTIES WHICH MAY ARISE BY OPERATION OF LAW, INCLUDING THE IMPLIED WARRANTIES OF MERCHANTABILITY AND FITNESS FOR A PARTICULAR PURPOSE, ARE LIMITED TO THE FIVE YEAR DURATION FROM THE DATE OF PURCHASE AS DESCRIBED ABOVE.

Some states do not allow limitations on how long an implied warranty lasts so the above limitation may not apply to you.

NOTE: Please keep your original sales receipt. It provides proof of date of purchase in the event of a warranty claim.

Service

If your BISSELL product should require service:

Contact BISSELL Consumer Care to locate a BISSELL Authorized Service Center in your area.

If you need information about repairs or replacement parts, or if you have questions about your warranty, contact BISSELL Consumer Care.

Website:

www.BISSELL.com

E-mail:

www.BISSELL.com/email-us

Call:

BISSELL Consumer Care

1-800-237-7691

Monday - Friday 8am - 10pm ET

Saturday 9am - 8pm ET

Sunday 10am - 7pm ET

Please do not return this product to the store.

Other maintenance or service not included in the manual should be performed by an authorized service representative.

For any questions or concerns, BISSELL is happy to be of service. Contact us directly at 1-800-237-7691.

Register your product today!

Registering is quick, easy and offers you benefits over the lifetime of your product.

You'll receive:

BISSELL Rewards Points

Automatically earn points for discounts and free shipping on future purchases.

Faster Service

Supplying your information now saves you time should you need to contact us with questions regarding your product.

Product Support Reminders and Alerts

We'll contact you with any important product maintenance reminders and alerts.

Special Promotions

Optional: Register your email to receive notice of offers, contests, cleaning tips and more!

Visit www.BISSELL.com/registration!

Visit the BISSELL website: www.BISSELL.com

When contacting BISSELL, have model number of cleaner available.

Please record your Model Number: _____

Please record your Purchase Date: _____

NOTE: Please keep your original sales receipt. It provides proof of purchase date in the event of a warranty claim. See Warranty on page 11 for details.

Parts & Supplies

For Parts and Supplies, go to www.BISSELL.com and enter your model number in the search field.

We can't wait to hear from you!

Rate this product and let us (and millions of your closest friends) know what you think!

www.BISSELL.com



©2016 BISSELL Homecare, Inc.
Grand Rapids, Michigan
All rights reserved. Printed in China
Part Number 161-1025 11/16 RevA
Visit our website at: www.BISSELL.com