



WARNING: FAILURE TO FOLLOW THESE INSTRUCTIONS
COULD RESULT IN SERIOUS INJURY OR DEATH.



Scan To See Owner's Guide Tutorial



USE & CARE GUIDE



Questions? Call Us First

DO NOT RETURN TO THE STORE.

For immediate help with assembly or products information, please call our customer service agent at 1.877.388.5867 or email to support@jumporange.com.

Our staffs are ready to provide assistance.

Office Hours M-F From 8:30 AM to 5:30 PM PST



WARNING

- Adult set-up and supervised required. Keep children away from the blower.
- Do not use extension cords with this inflatable device. Outdoor use only.
- Do not place the constant air inflatable near or under overhead electrical lines.
- Keep all electrical lines, radios, speakers and other electrical devices away from the constant air inflatable.
- Precautions should be observed during handling and use to prevent electric shock.

WARNING

NO DIVING

SHALLOW WATER



Crippling Injuries May Occur

PREVENT DROWNING



Watch children at all times.

DANGER

Warning! Children, especially children under age 5 are at high risk of drowning. Closely watch children who are in or near this pool. Empty inflatable device or prevent access when not in use. Drowning occurs silently and quickly and can occur in as little as 2in. (6cm) of water.

SAFETY WARNINGS: Playing In the Water Slide

Prevent from drowning risk:

- Children must be accompanied by an adult.
- State or local laws and codes may require installing fencing or other approved barriers to keep unsupervised children from accessing the pool. Check state or local laws before setting up the Constant Air Inflatable.
- Keep Children in your direct sight when you are filling and emptying the inflatable pool.
- When searching for a missing child, check the pool first, even if you think your child in the house.
- Some of the inflatable device surfaces are slippery and may present a hazard.

Emergency Aid:

- Keep a working phone and list of emergency numbers near the inflatable device.
- Become certified in a cardiopulmonary resuscitation (CPR) so you can respond to an emergency.

Prevent from serious injury or death:

- Children can drown in a very small amount of water. Empty the pool when not in use.
- Do not slide down on your stomach or head first. ALWAYS slide down with your feet pointing down the slide.
- Do not double sliding. ONLY one person should be on the slide and climb at a time.
- Do not diving or jumping shallow water. Diving may result in permanent injury or death.
- Do not use outdoor footwear on any part of the inflatable device as it may become damaged.
- Do not running, jumping, or horseplay in or around the pool.
- Do not sliding or jumping down the climbing wall.
- Do not face the sun when sliding.
- Do not rough play, such as somersaults, flips, wrestling and gymnastic moves. Rough play is dangerous for children and can damage the product.
- Do not slide down the slide until the splashdown area is clear.

Slide Rules:

- ONLY single sliders at a time.
- Do not climbing up the slides. ALWAYS climb up the climbing wall to the top of the slide.
- Do not go down the chute backwards. ALWAYS sit on the top with your feet pointing down the slide.
- Do not punshing. ALWAYS scoot forward and slide down into the splashdown area.
- Do not eat, drink or chew gum in play area.
- Glasses and goggles are not allowed on the slide.
- Clear splashdown area after exiting slide.
- Parents or guardians are not allowed to catch their children at the bottom of slide.

To avoid serious injury all users must know and follow these safety rules.

SAFETY WARNINGS: READ ALL INSTRUCTIONS BEFORE ASSEMBLING THIS INFLATABLE DEVICE. FAILURE TO FOLLOW THESE INSTRUCTIONS COULD RESULT IN SERIOUS INJURY OR DEATH.



Adult supervision required



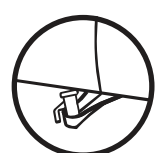
Age To Use Inflatable Device:
Commerical: 5 Years +
Residential: 3 Years +



No shoes, glasses, jewelry, goggles or any loss objects



Min. User Height:
Commerical: 4ft./122cm
Residential: 3ft./92cm



Must be anchored firmly and securely using stakes.
Only install on Soft Surface.



Do Not let children play together who are unevenly match in sizes



Riders must slide on their back and feet first



No Double Sliding



Do Not Play if you have any medical condition(s)



Clear splashdown area after exiting slide



No Rough Play



Do Not allow children to touch all electronic products. Adult set-up and supervision required.



Maximum Capacity:
Bouncer: 3 Climb Wall: 1
Slide: 1 Splash Pool: 4
Commerical Obstacle Course: 6
Residential Obstacle Course: 3



No hands or feet on net



Do Not use in windy conditions exceed 15 mph or inclement weather



Maximum Weight Per User:
Commerical: 175lbs/80kg
Residential: 100lbs/45kg



No climbing up slides



Do Not leave out, use in rain or damp surface

Safety Instructions

WARNING! MUST READ AND UNDERSTAND SAFETY INSTRUCTIONS BEFORE ASSEMBLING AND ENTERING THIS INFLATABLE DEVICE.

- Children must be accompanied by an adult ALL TIMES.
- Closely watch children who are in or near the pool. Children, especially toddlers at high risk of drowning.
- NEVER leave players unattended at any time. Instruct children on proper use of this inflatable device.
- No shoes, goggles, glasses or any loss objects into the play area.
- Keep pets away from this product.
- No sharp objects into play area.
- Do not allow other toys or objects inside the product.
- Do not let children to play together who are unevenly matched in sizes.
- ALWAYS climb in an upright position, placing feet on each step, and placing hands to grab safety handles.
- Children can drown in a very small amount of water. Empty the pool when not in use.
- Do not slide down on your stomach or head first.

- Slide down with your feet first only.
- Clear splashdown area after exiting slide.
- Do not stand up on the slide platform.
- ONLY one child will be allowed at a time on each slide and climbing wall.
- Do not use this product if you have any existing medical conditions. Ask your doctor if you have any concerns.
- Do not use this product if you are pregnant.
- Keep this inflatable device away from heat and open flame at all times.
- Do not use in direct sun when temperature is above 90 degrees Fahrenheit (32 degrees Celsius). It may cause thermal burns due to heated surface.
- Always check product and all its anchorage points during use and re-secure.
- Keep children away from electrically operated products.
- Ensure electrical source is stable and safe before operation.
- Must anchored firmly and securely using stakes. Only install this product on soft ground.
- Before and during use, check for air loss. Make sure blower is properly connected to air tube.
- Always check for excessive air loss, and re-inflate before allowing play to continue.
- The blower should run continuously while children are playing.
- Do not let children walk on the side where motor blower is attached.
- Do not insert foreign objects, fingers, toes, ect. into the blower or it will cause injury.
- Do not leave this product outside when not in use. Prolonged exposure to sun or strong weather will damage the product.
- Remove all children before deflate the inflatable products.
- This product must be thoroughly dry after use and before storage.

If product contains a pool:

- Adult supervision required.
- NEVER leave it inflated or full of water overnight.
- Drain water immediately when not in use.
- Do not jump or dive into the pool area.
- Install fencing or other approved barriers around all side of inflatable device.
- Keep pool area clean to prevent illness. No food or drink in the pool.
- NEVER drink pool water.
- Prior deflation, turn off the garden hose, remove water hose and disconnect tubing.

SAFETY WARNINGS: Set Up

⚠ WARNING! This inflatable device must be supervised and set up by an adult. Never place on concrete, wood, grass, asphalt, packed earth or other hard surfaces. Falls onto hard surfaces can result in dead or other serious injuries.

- Any JumpOrange Residential Kiddo series are intended for outdoor domestic family use only. Not use for public area or as a rental.
- Do not use this product if wind speed 15 mph.
- Do not set up in windy or rainy conditions: wind may lift the product off of the ground.
- Never dragged across rough surfaces.
- Only blower should be used for inflation.
- Make sure to keep 7 feet (2.1m) obstacle-free zone around the product.
- At least 80 pounds is necessary to keep bouncer tie down, anchored attach posts buildings and fences.
- Do not use extension cords with this product.
- Make sure the blower securely anchored to the ground before use this inflatable device.
- Installing safety barriers to keep children from gaining access when not in use.
- Place on level ground and firm soil or grass to allow proper use of stakes.

SAFETY WARNINGS: Blower

⚠ DO NOT USE EXTENSION CORDS WITH THIS PRODUCT. USE ONLY ON GFCI PROTECTED RECEPTACLES. KEEP CHILDREN AWAY FROM THE BLOWER.

- Adult supervision required. Do not leave blower unattended.
- The blower must be securely staked to the ground before use.
- Only use with Ground Fault Circuit Interrupt (GFCI) protected receptacle.
- Always test the blower AC adapter before use.
- Do not open the blower. If blower needs servicing, please take it to reputable dealer.
- Do not immerse the blower into water or expose to rain.
- Do not plug in or unplug the appliance with wet hands or while standing in water or rain.
- Do not insert small objects into any parts of the blower.
- Do not use the blower with any solid-state speed control device to reduce the risk of fire or electrical shock.
- Do not direct stream of air at face or body to avoid risk of injury.
- This product is intended for outdoor use only.
- Always unplug the blower before servicing.
- Do not operate the blower with a damaged cord or plug.

⚠ CAUTION: KEEP BLOWER AWAY FROM WATER, TRAFFIC AND CHILDREN. THIS BLOWER IS A HIGH VOLUME FAN, AND IS CAPABLE OF MOVING LOTS OF AIR VERY QUICKLY.

Unfolding



1. Remove contents from the storage bag.



2. Unwrap drawstring



3. Unroll and unfold the product.



4. Pull from the center of the design area.

Blower Set Up



1. Tie off the short air tube tightly to prevent air loss.



2. Attach long air tube onto the mouth of the blower motor.



3. Wrap drawstring around and tie it securely. Keep children away from blower.



Inflating

1. Always Test the Blower AC Adapter Before Use:



1. Plug in GFCI device.
2. Press RESET.
3. Press TEST.
4. Press RESET to use product.

⚠ DO NOT USE if the button fails to disable the blower.



2. Make sure 7ft.(2.1m) obstacle-free zone around this product.



3. Staked the product and blower securely to the ground before use.

4. Plug the blower into a properly grounded GFCI outlet, switch power ON. Product will inflate in less a minute.



⚠ WARNING! Blower must be running continuously inflate during use. Do not try to repair or seal seams if you hear air flow out of fabric. This is intent to allow air through seams.

If product contains a pool:



5. Connect tubing to the hook and loop closures down the side.



6. Attach garden hose to the end of the tubing assembly.

Deflating



1. Turn OFF and unplug the blower fan from the outlet.



2. Unhook the strap on the blower tube to allow air to escape.



3. Unzip the zipper to speed up the deflation process.



4. Pull out the stakes around the unit and pack them up.

If product contains a pool:



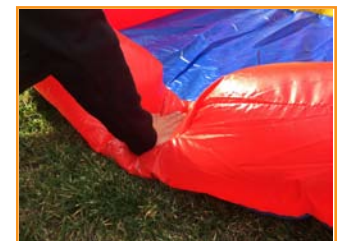
5. Take off the shoes before entering the product.



6. Walk from front to back to remove any remaining air towards the blower tube.



1-1. Turn off the garden hose and disconnect plastic tubing.



1-2. Press down the collapsing pool wall to drain the water.

Folding



1. To clean, wipe with a dry cloth. Thoroughly dry the unit before rolling up.



2. Make two half folds to the middle and walk around to remove air.



3. Fold in the half folds and walk around removing remaining air.



4. Keep pushing and flattening the roll as you go.

Storage



1. Loop the end of strap around and tight a tie slipknot.



2. Place the storage bag over the end of unit.

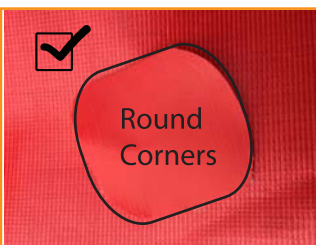


3. Tie the bag closed.



4. Store the unit and blower indoors in a dry place.

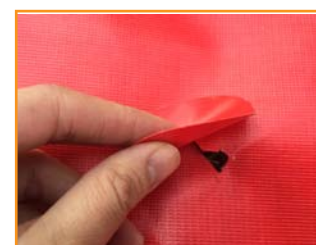
Repair Instructions ⚠️ WARNING: This is not a toy. Keep out of reach of children. Adult use only.



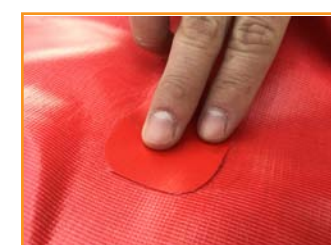
1. Cut the patch and **ROUND** the corners. (Corners cannot be sharp.)



2. Apply repair glue on damaged area and repair patch.



3. Position the patch over damaged area and smooth out bubbles.



4. Press firmly to ensure an even seal and allow to sit for 30 minutes before re-inflating.

⚠️ CAUTION: Always deflate this product before repair the damaged area.

Maintenance

- Unplug and store the blower indoors in a dry place when not in use.
- Do not immerse the blower in water. To clean, wipe with a damp cloth.
- Store the blower upright position on a stable surface.
- To clean water slides: Using a dry cloth or a cloth wetted with a neutral solution or water to wipe the surface.
- Never store this product in wet. Thoroughly dry before rolling up.

Limited Warranty

JumpOrange branded products are warranted to the original owner against manufacturing defects in materials and workmanship up to three (3) years* from the date of purchase (dated sales receipt is required for proof of purchase). If JumpOrange branded products covered by this warranty fails due to manufacturing defect we will repair the products without charge, or replace it, at our discretion. This limited warranty does not cover damage caused by accident, improper care, negligence, unusual wear and tear, excessive usage, abuse, alterations and the natural breakdown of colors and materials over extended time and use. The customer's usage of any inflatable products on a hard surface other than grass without use of a trap shall constitute improper usage, which is not covered by the warranty. Only original, unaltered and unmodified material and workmanship are covered by this policy. Damage not covered under warranty may be repaired for a reasonable rate and a fee will be charged for return shipping. All warranty issues are Credit Upon Inspection. For warranty evaluation, your products must be returned directly to JumpOrange Warranty Department, 13221 Arctic Circle, Santa Fe Springs, CA 90670. All shipping to warranty should have a Return Merchandise Authorization Number (RMA#) obtained from JumpOrange Customer Service Department. Unidentified returns will not be accepted or noticed. California state law requires that products accepted for repair must be clean. Charge will be assessed if cleaning is necessary or product may be returned to you if it cannot be adequately cleaned. Any other Non-JumpOrange branded products purchases will be referred to the original manufacturer for the warranty service.

***Commercial Monster Series (Model Number begins with JG & JC & JOC & JOG) Limited Warranty:**

We warrant three (3) years on Dry Use Commercial Monster; one and half (1.5) years on Wet and Dry Use Commercial Monster products from the date of purchase.

Commercial Hero Series (Model Number begins with JOH) Limited Warranty:

We offer one (1) year warranty from the date of purchase on Commercial Hero products.

Residential Kiddo Series (Model Number begins with JOK) Limited Warranty:

We warrant ninety (90) days from the date of the purchase on Residential Kiddo products.

Blowers Limited Warranty:

We warrant the air blowers it sells for a period of one (1) year from the date of purchase.

For warranty services or replacement parts, please contact our customer service team at 1.877.388.5867 or email support@JumpOrange.com for more details of this limited warranty coverage.

JumpOrange Customer Service
13221 Arctic Circle
Santa Fe Springs, CA 90670
1-877-388-JUMP(5867)
www.JumpOrange.com

