

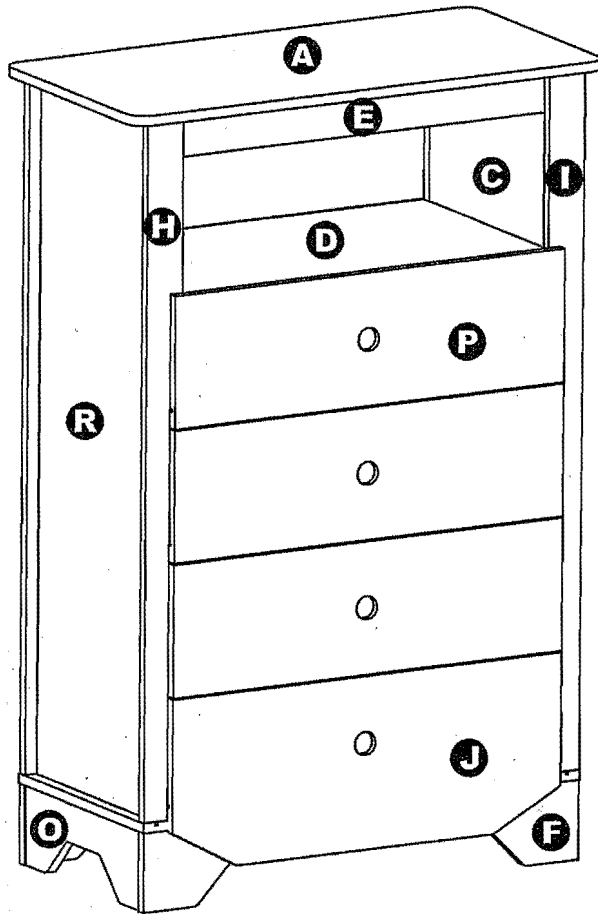
CHEST OF DRAWERS

ASSEMBLY INSTRUCTIONS

MODEL # YNJ-322-5

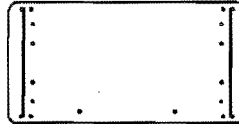
Please keep for future reference

PARTS LIST



ITEM SIZE :31.5" (W) X 15.75" (D) X 47.44" (H)

A 1PC



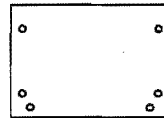
G 1PC



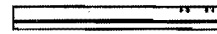
N 4PCS



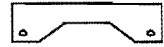
B 1PC



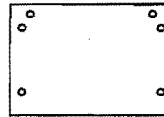
H 2PCS



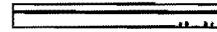
O 2PCS



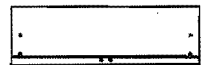
C 1PC



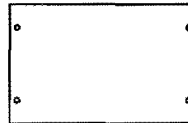
I 2PCS



P 3PCS



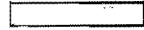
D 1PC



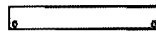
J 1PCS



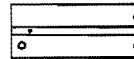
Q 4PCS



E 1PC



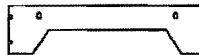
K 4PCS



R 2PCS



F 2PCS



M 4PCS

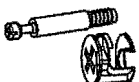


T 2PCS



HARDWARE LIST

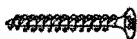
① 32PCS



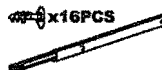
② 72PCS



③ 16PCS



④ 8PCS



⑤ 8PCS



⑥ 20PCS



⑦ 4PCS



⑧ 1PC



⑨ 8PCS

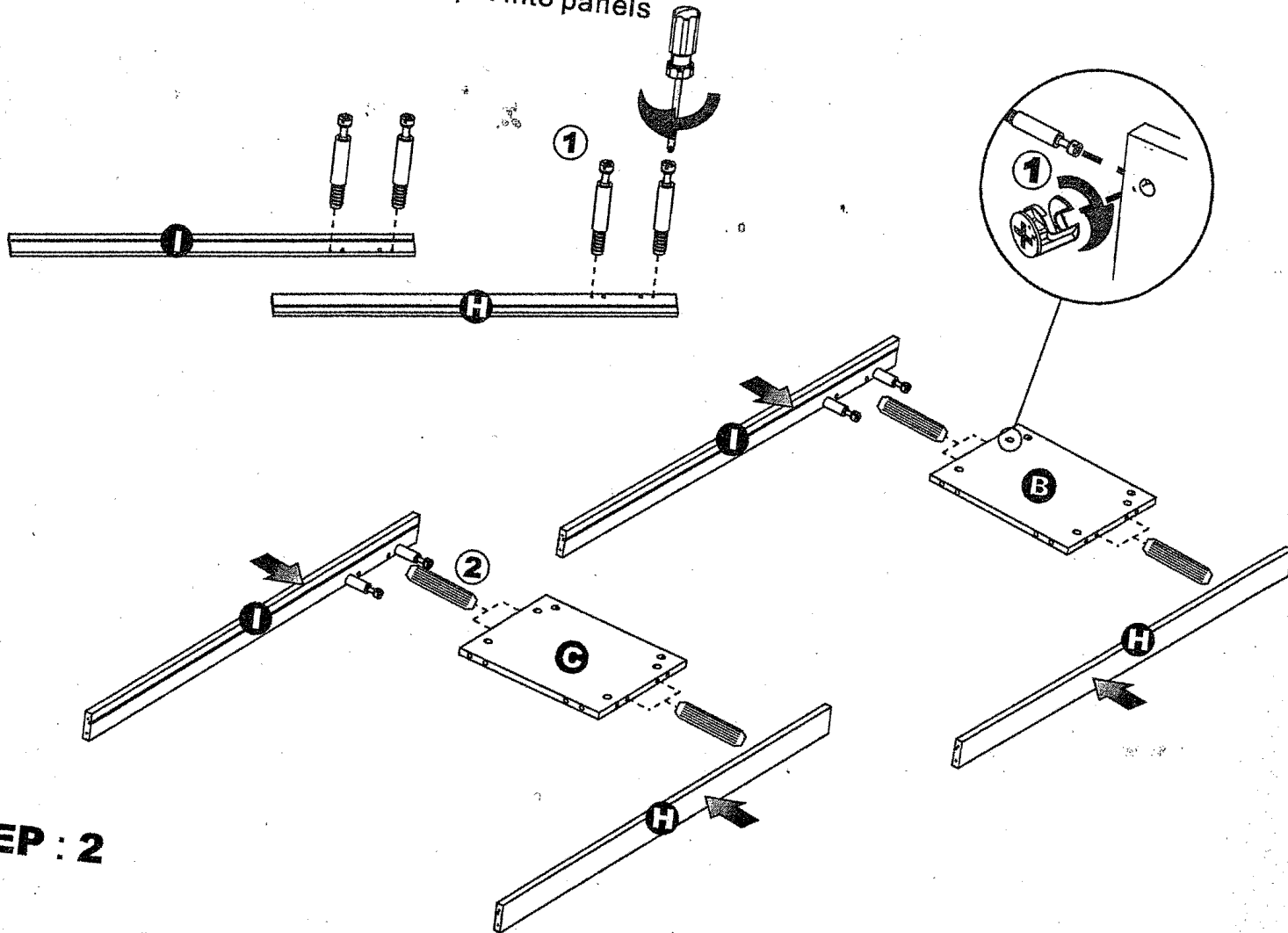


⑩ 16PCS

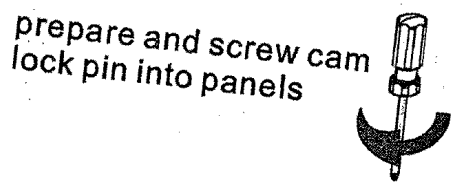
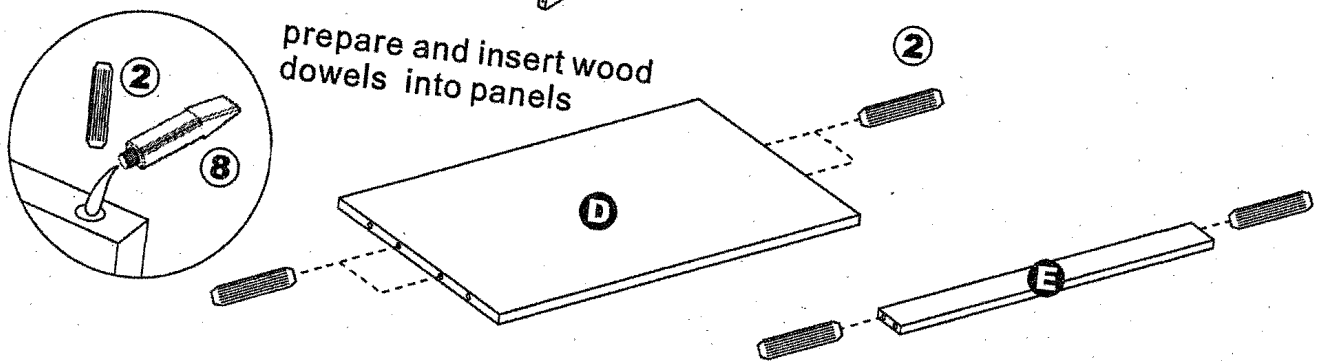


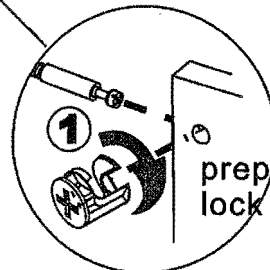
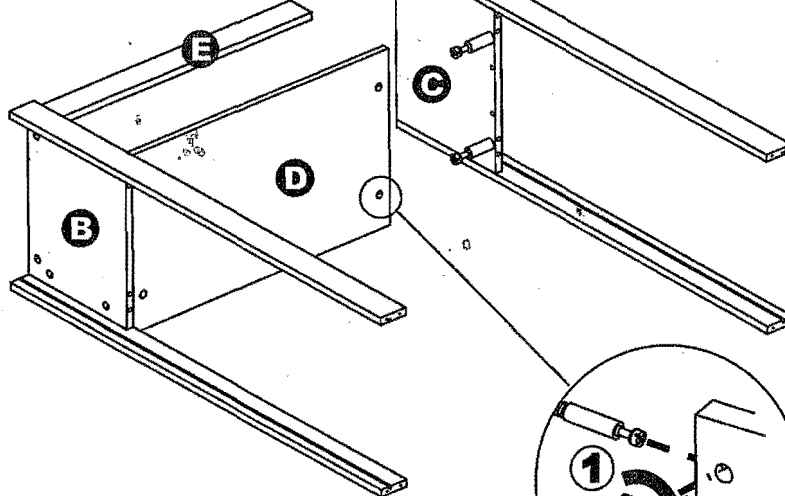
⑪ 1PC



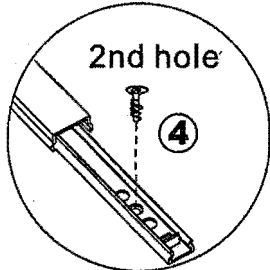


STEP : 2





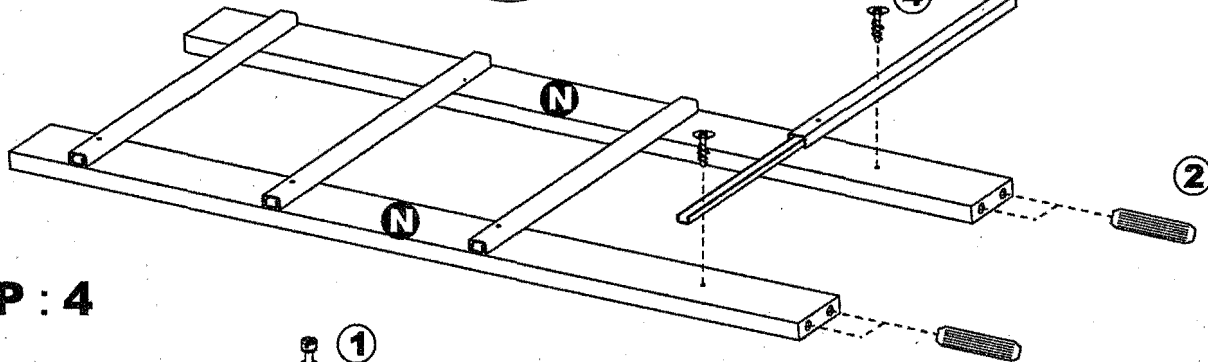
prepare and screw cam lock pin into panels



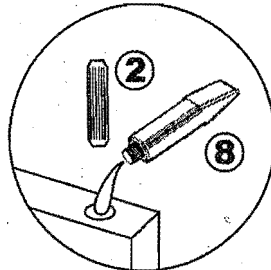
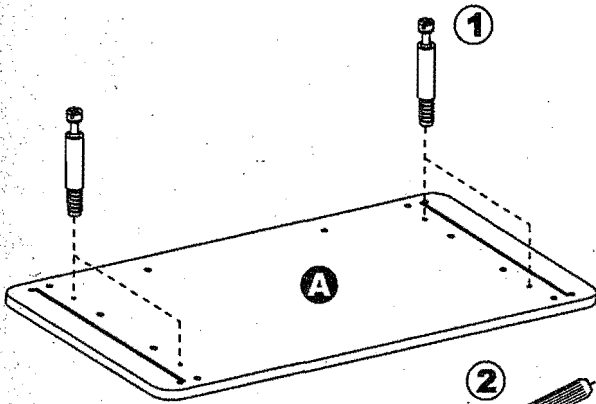
-Pull runner to align 2nd hole on the other end



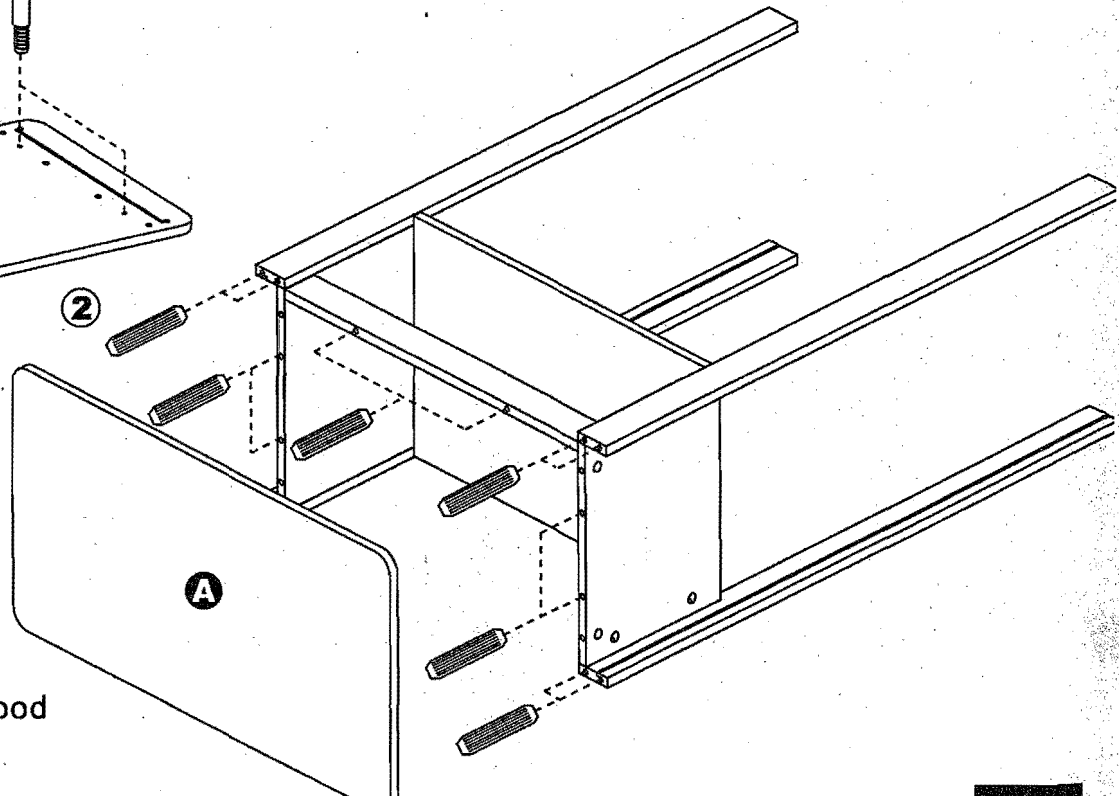
-By using the **shortest** wood screw

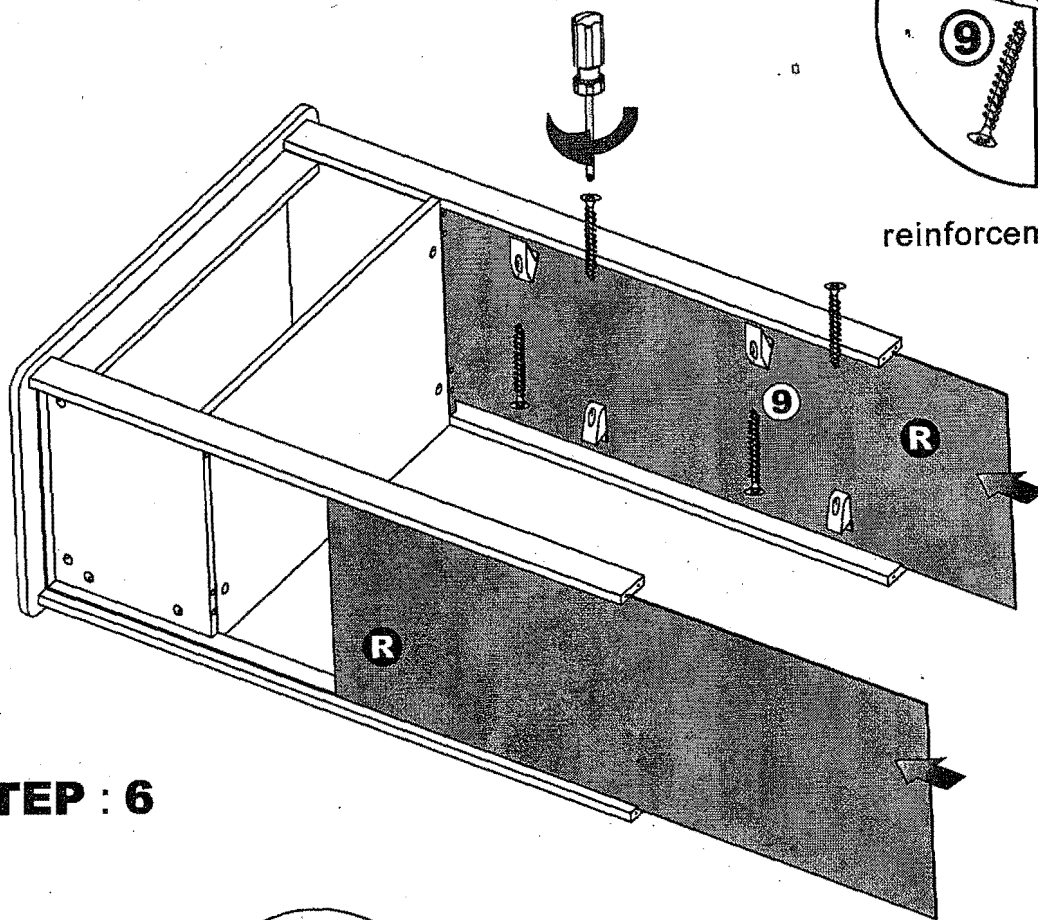


STEP : 4



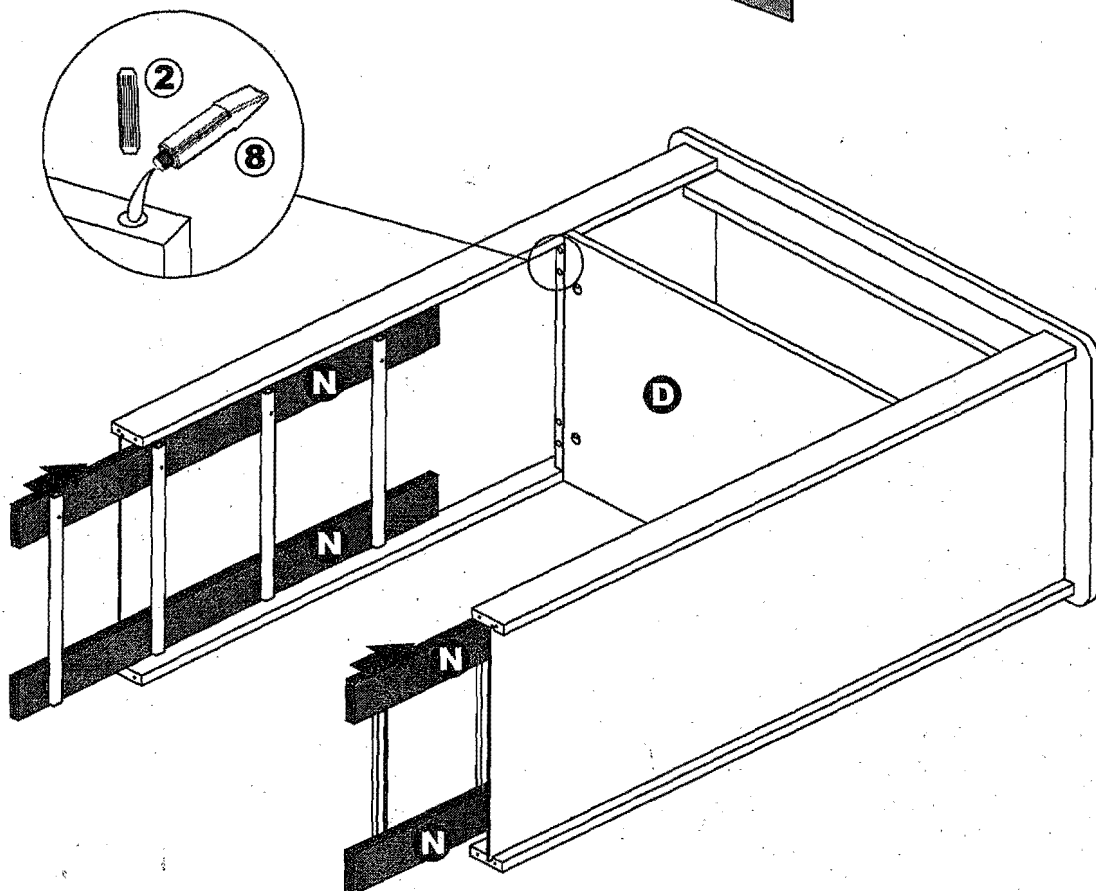
prepare and insert wood dowels into panels



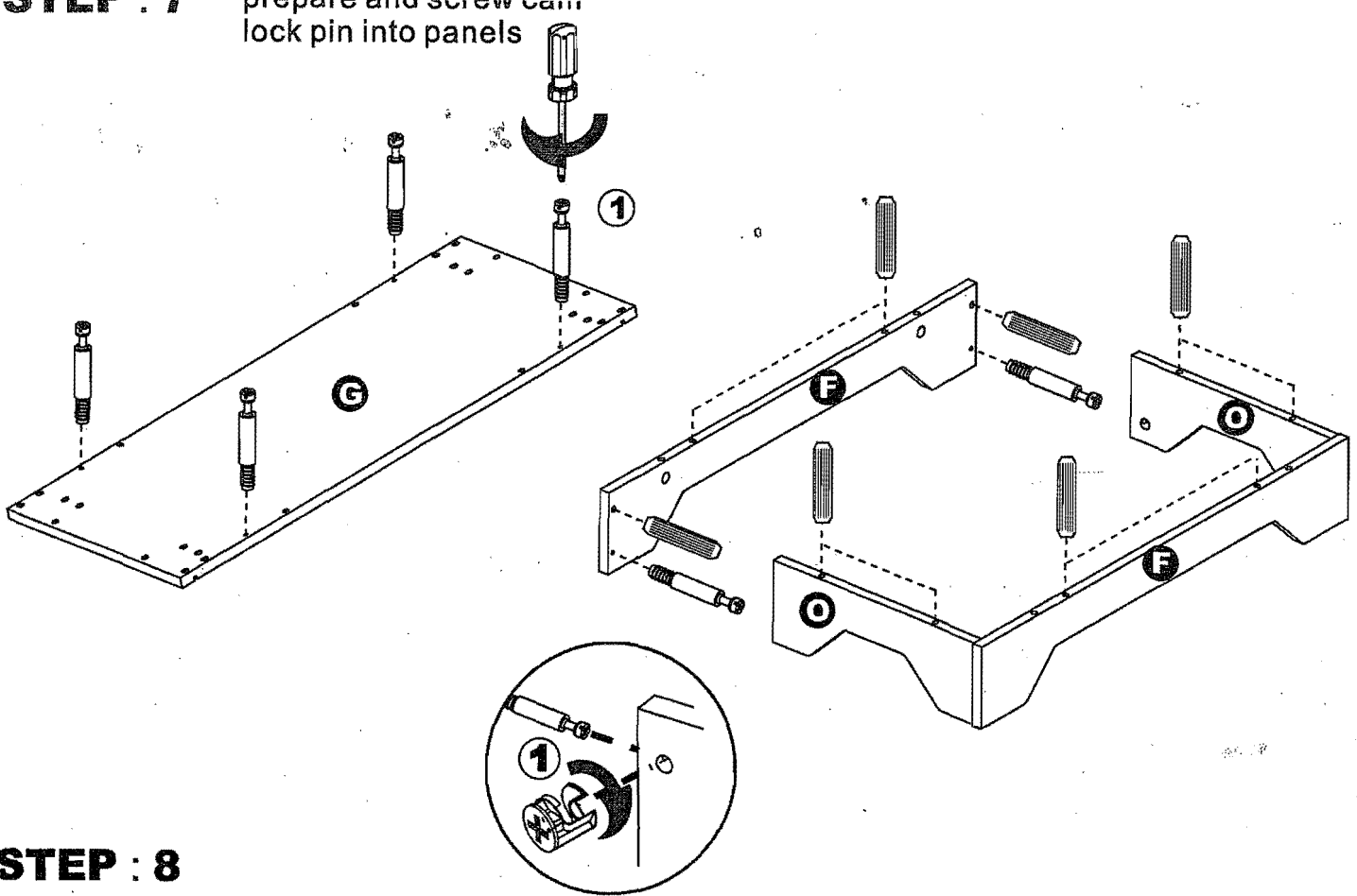


reinforcements on the back

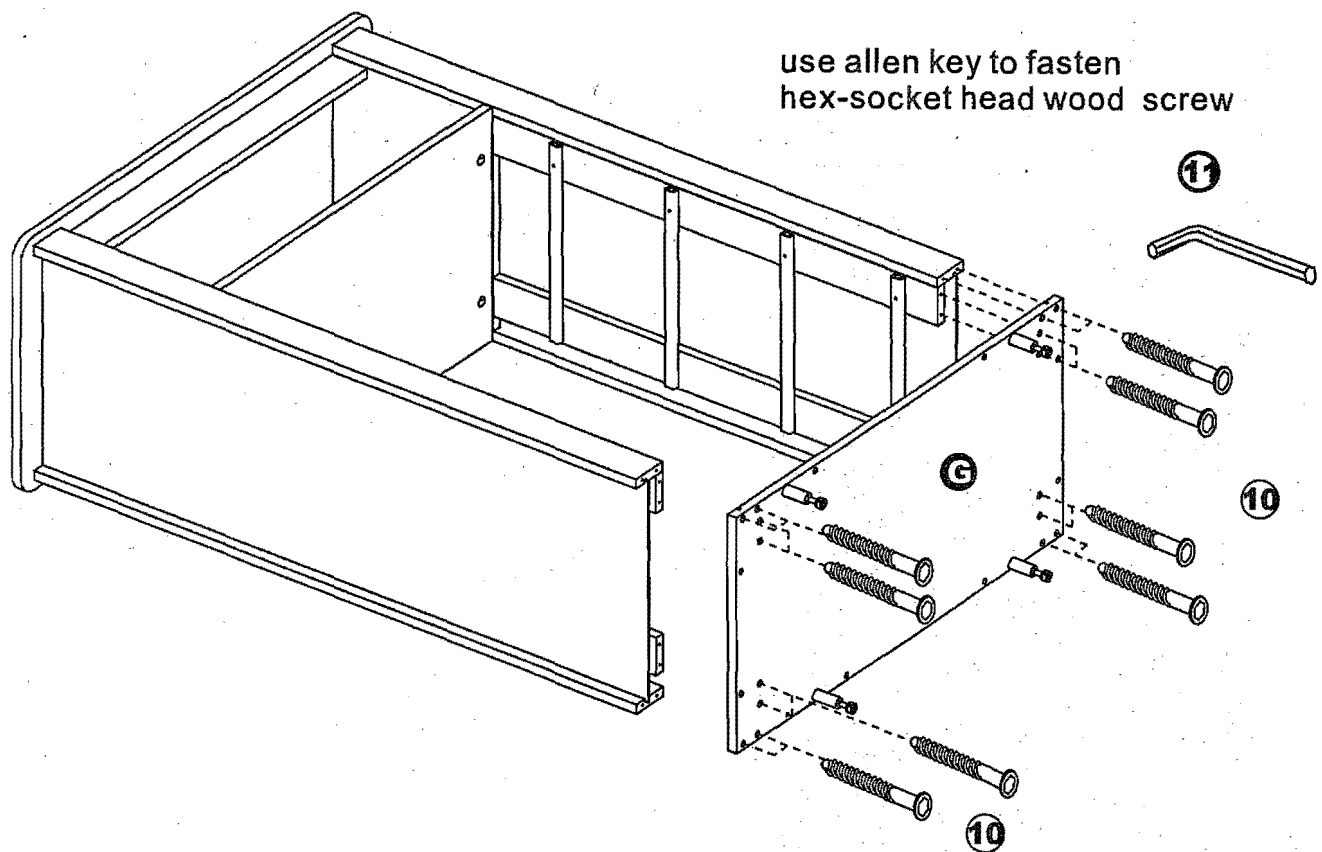
STEP : 6



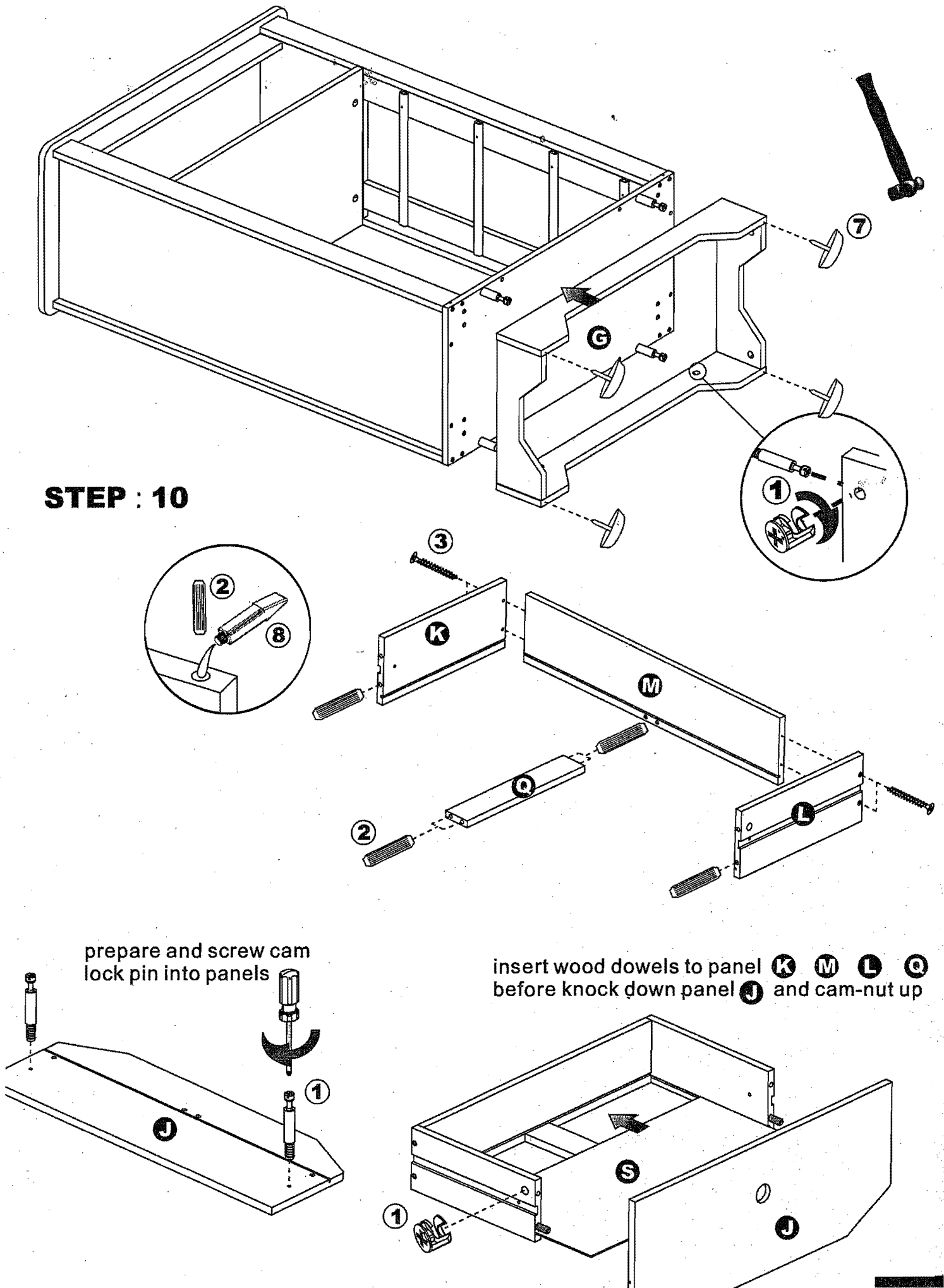
STEP : 7 prepare and screw cam
lock pin into panels

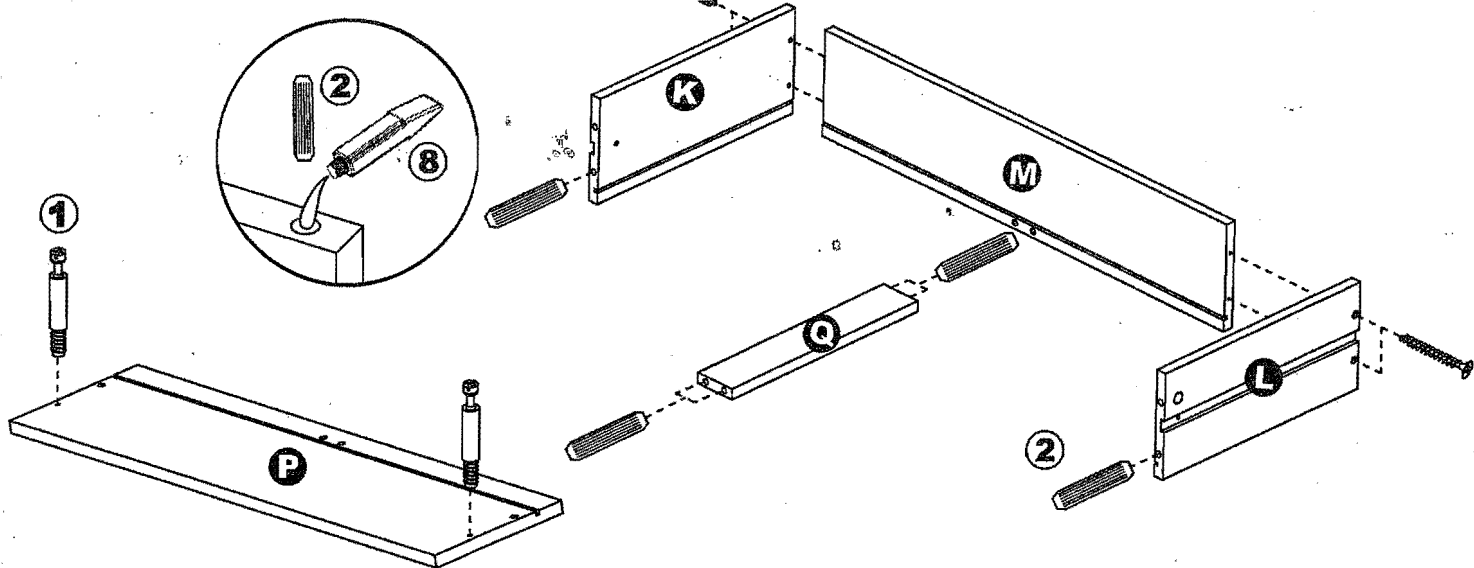


STEP : 8

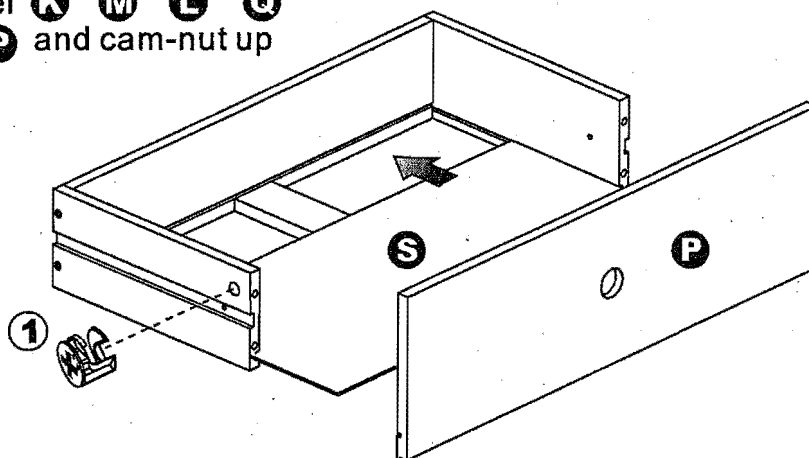
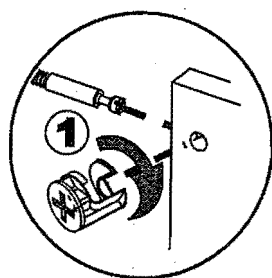


STEP : 10

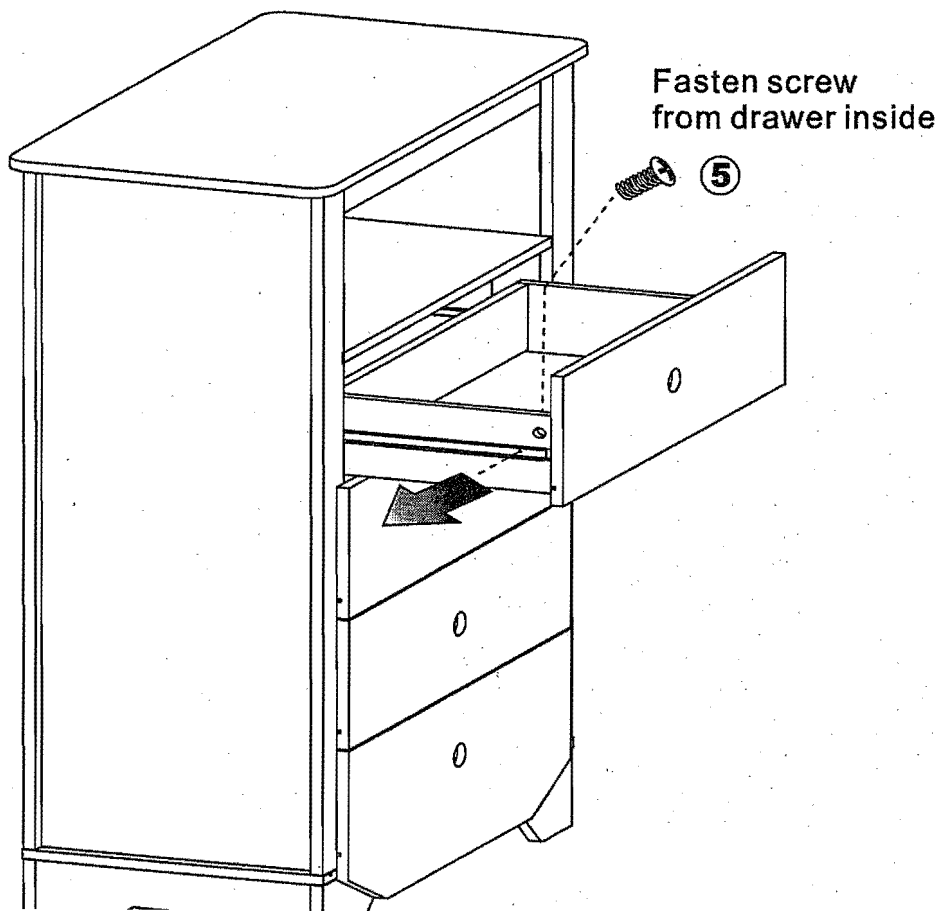


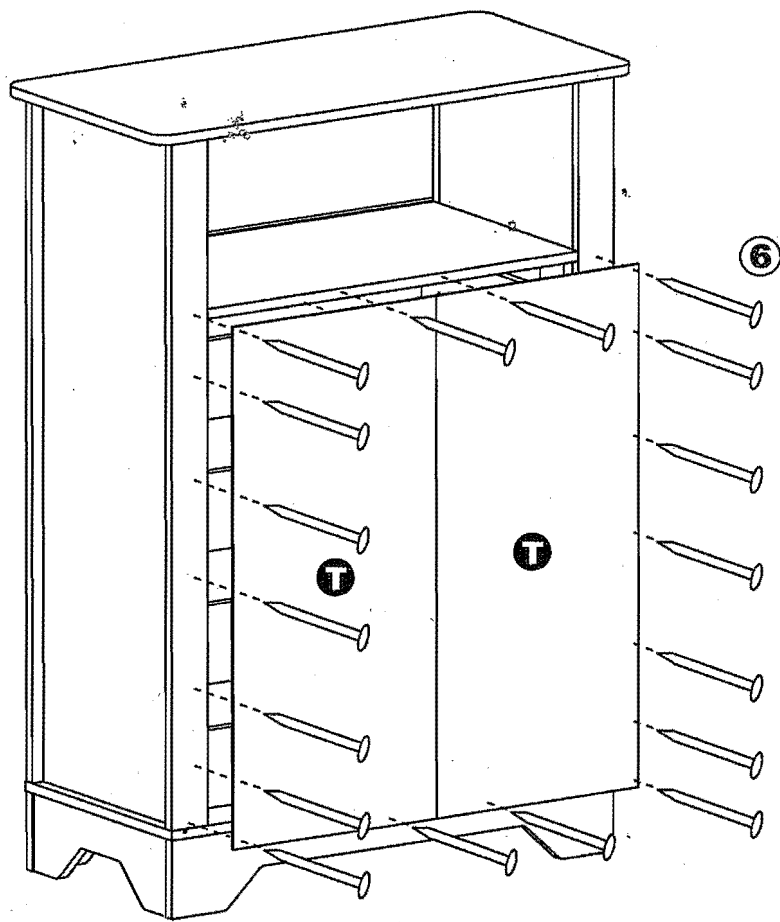


insert wood dowels to panel **K** **M** **L** **Q**
before knock down panel **P** and cam-nut up



STEP : 12





STEP : 14

