

WELCOME.

LG Oven Quick-Start Guide



NEED HELP? Call an LG Support Representative at 800.243.0000 or visit lg.com for online support.



This guide shows you how to quickly download the free LG SmartThinQ® app to your Android or iOS device and connect your LG Oven

Now, you can control key LG Oven features from your smartphone!



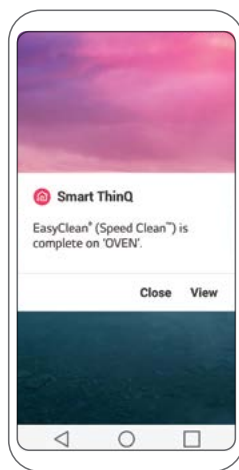
PREHEAT ON THE WAY HOME

Preheat the oven remotely from your smartphone and keep meal time on track.



MONITOR COOKING PROGRESS

Check remaining cooking time from your smartphone.



MAKE CLEANUP A BREEZE

Get automatic smartphone alerts when the EasyClean® cycle is complete.



DOWNLOAD THE SMARTTHINQ® APP

01

DOWNLOAD

Download the SmartThinQ® app from [Google Play](#) or the [Apple Store](#).



02

START

Launch the SmartThinQ® app and press **start**. Press **create account** and follow the on-screen instructions. Enter your account information and verify your e-mail.



SELECT YOUR PRODUCT

03

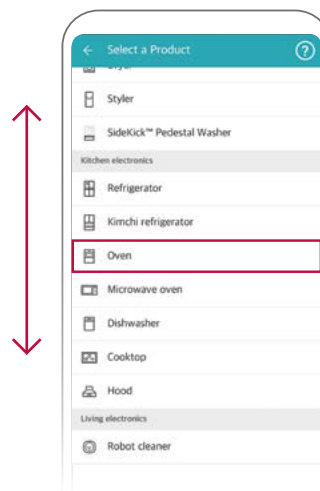
SIGN IN

Click **agree** to accept Terms of Use. Press **sign in** and enter your e-mail ID and password.

04

SELECT

Tap on the **“+”** at the top of the screen to register your product. **Select** Oven from the menu.





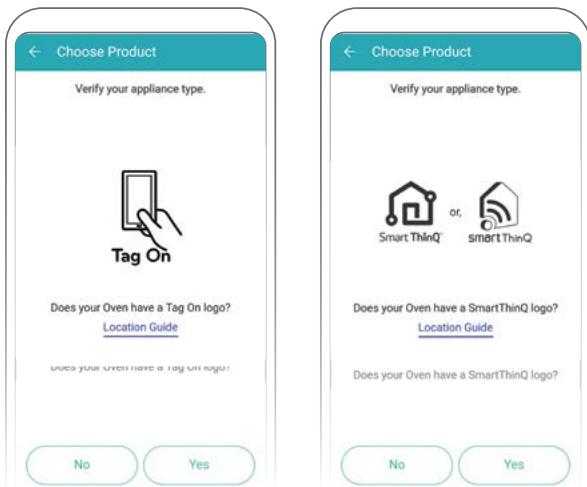
CONNECT YOUR PRODUCT

05 (ANDROID)

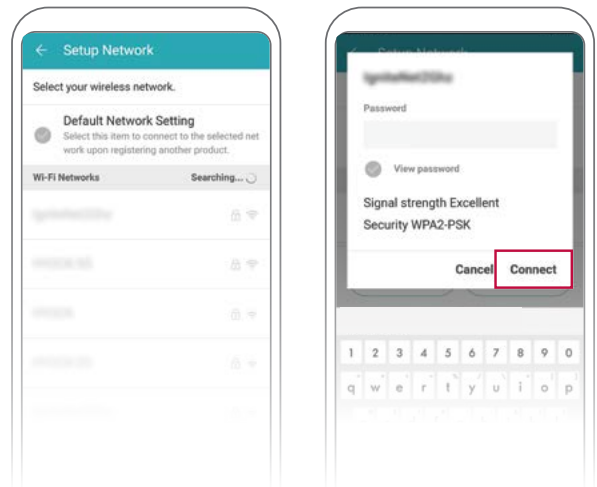
CONNECT PRODUCT & WI-FI

Connect SmartThinQ® to the LG Network by following the on-screen prompts below.

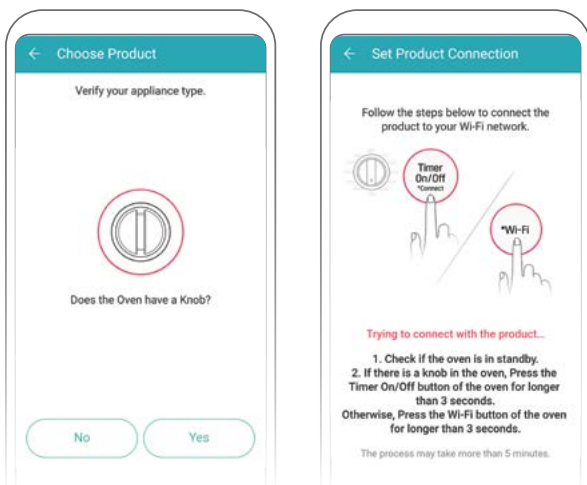
1. After selecting Oven, follow the on-screen prompts to verify your appliance type. **Note: Certain prompts only apply to select ovens.**



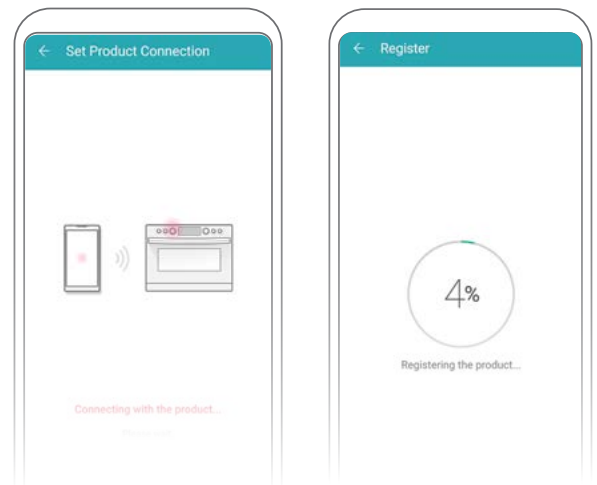
3. On the next screen, select the name of your wi-fi network, enter a valid password and press **connect**. **Please note: Only a 2.4 Ghz wi-fi connection is supported.**



2. Once finished with appliance type verification, **press and hold** the **Timer On/Off** button (if your Oven has a knob) or the **Wi-Fi** button on the Oven for **3 seconds** until the wi-fi LED light starts to blink.



4. It may take up to 2 minutes to connect to your selected wi-fi network and completely register your Oven. Once finished, your product will be listed on the main dashboard.





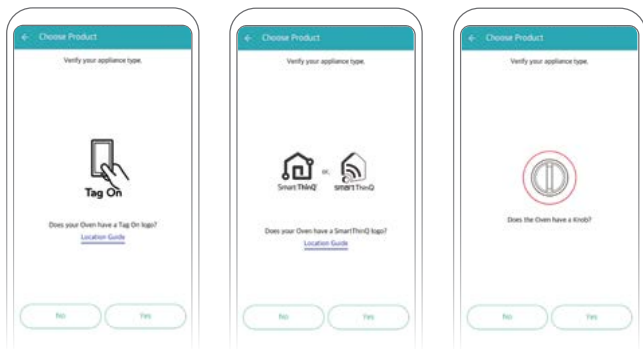
CONNECT YOUR PRODUCT

05 (iOS)

CONNECT PRODUCT & WI-FI

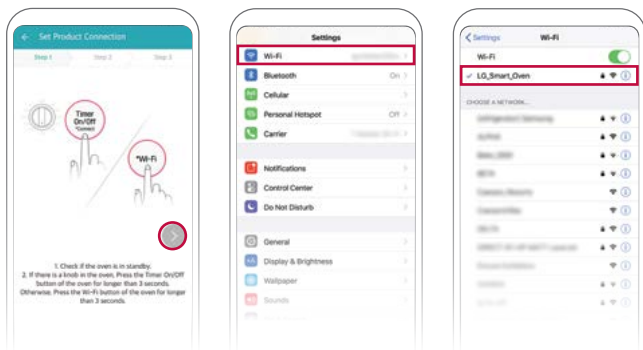
Connect SmartThinQ® to the LG Network by following the on-screen prompts below.

1. After selecting Oven, follow the on-screen prompts to verify your appliance type. **Note: Certain prompts only apply to select ovens.**

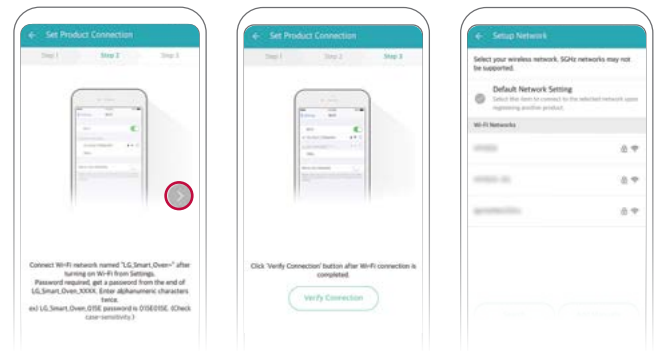


2. Once finished with appliance type verification, **press and hold** the **Timer On/Off** button (if your Oven has a knob) or the **Wi-Fi** button on the Oven for **3 seconds** until the wi-fi LED light starts to blink. Press the “>” button to continue.

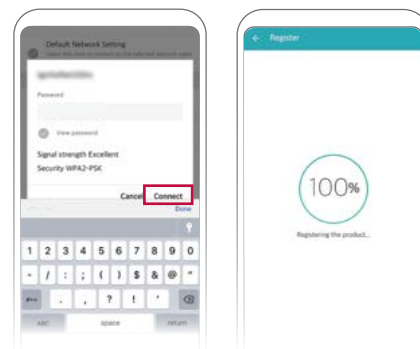
On your phone, go to settings and press **Wi-Fi**. On the list of options, select **LG_Smart_Oven**. **Note: If prompted for a password, enter the last 4 digits twice from the wi-fi name.**



3. Return to the SmartThinQ® app and press the “>” button. On the next screen, press **verify connection**. Select the name of your wi-fi network to connect. **Please note: Only a 2.4 Ghz wi-fi connection is supported.**



4. Enter the password for the wi-fi network you have chosen and press **connect**. It may take up to 1 minute to completely register your Oven. Once finished, your product will be listed on the main dashboard.





CONNECT YOUR SMART SPEAKER

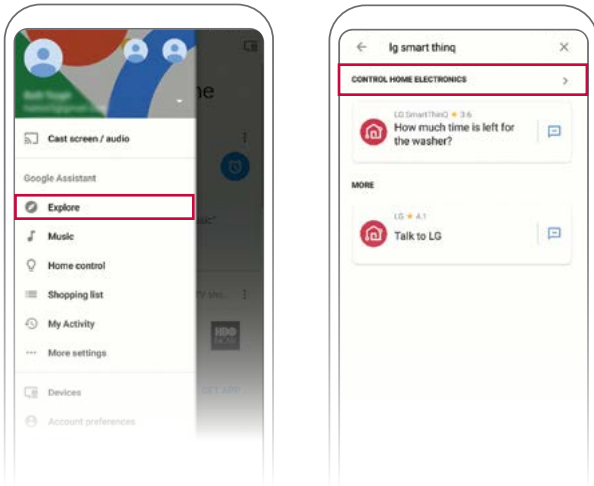


06 (GOOGLE HOME)

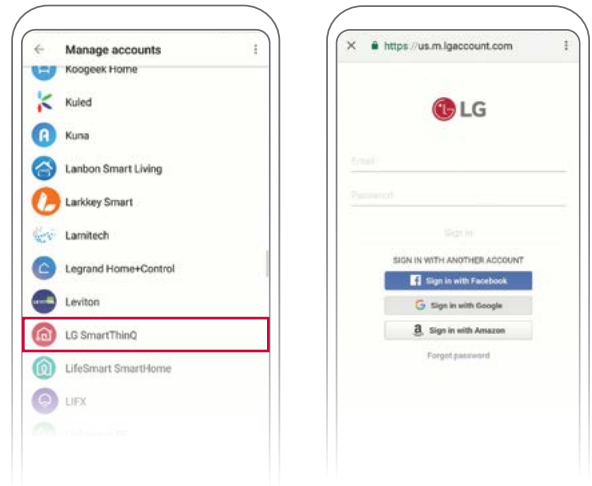
CONNECT

Connect your Oven and enable use with Google Home by following the steps below.

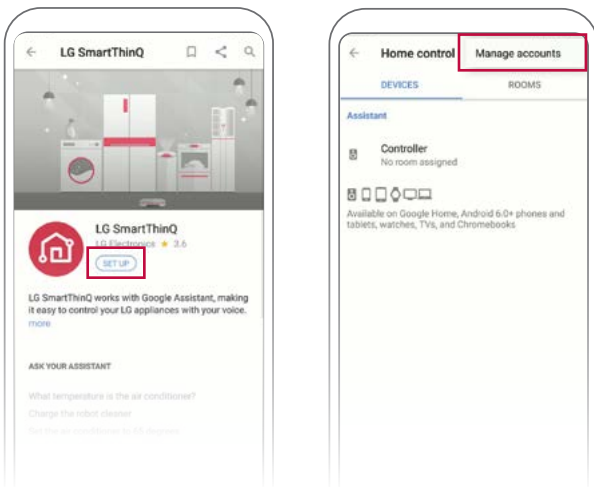
1. Open the Google Home app on your smartphone. Go to the menu and press **explore**. Search **LG SmartThinQ** and press **control home electronics** after searching has completed.



3. Select **LG SmartThinQ** from the available menu. Sign in to your LG SmartThinQ® account and then press **done** in the upper right corner. You are now connected!



2. Press **set up** from the next screen. From the Home Control screen, press the menu in the upper corner and select **manage accounts**.



07

COMMAND

Talk to your Google Home and say: **“Hey Google, talk to LG.”** The Google Home will then say: **“Welcome to LG. How can I help you?”** Once connected, try these sample commands with your Google Home. Enjoy!



“Hey Google, turn off the range/oven.”

“Hey Google, what cycle is the range/oven?”



CONNECT YOUR SMART SPEAKER

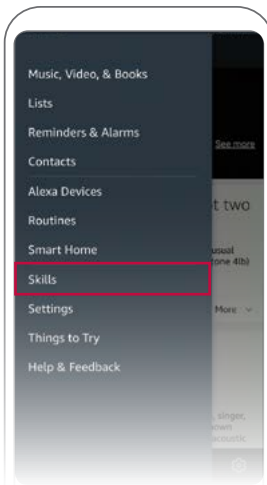


06 (ALEXA)

CONNECT

Connect your Oven and enable use with Alexa by following the steps below.

1. Open the Alexa app on your smartphone. Go to the menu and press **skills**. Search **LG SmartThinQ** and press **LG SmartThinQ – Complete (Smart Appliance and TV)** after searching has completed.



07

COMMAND

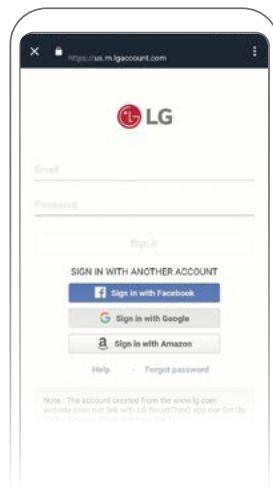
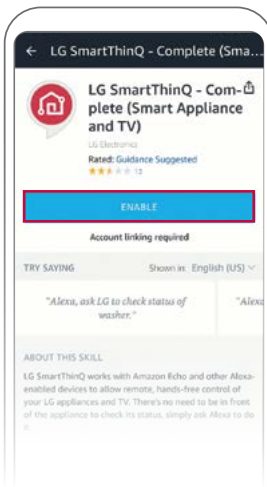
Talk to Alexa and say: **“Alexa, talk to LG.”** Alexa will then say: **“Welcome to LG. How can I help you?”** Once connected, tell Alexa a command for your product. Enjoy!



“Alexa, ask LG to turn off the range.”

“Alexa, ask LG how much time left on the range.”

2. Press **enable** from the next screen. Sign in to your LG SmartThinQ® account. You are now connected!





REGISTER YOUR PRODUCT

08

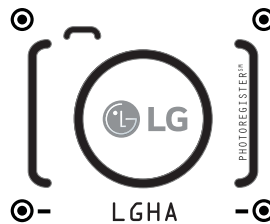
FOR PRIORITY SERVICE

Thank you for purchasing an LG product. We hope you're enjoying it! Now it's important to register your product—a quick, simple process with many benefits:

- Verification of Ownership
- More Efficient Warranty Service
- Access to Exclusive Information on New Products, Offers and Promotions

Register Easily with Your Phone

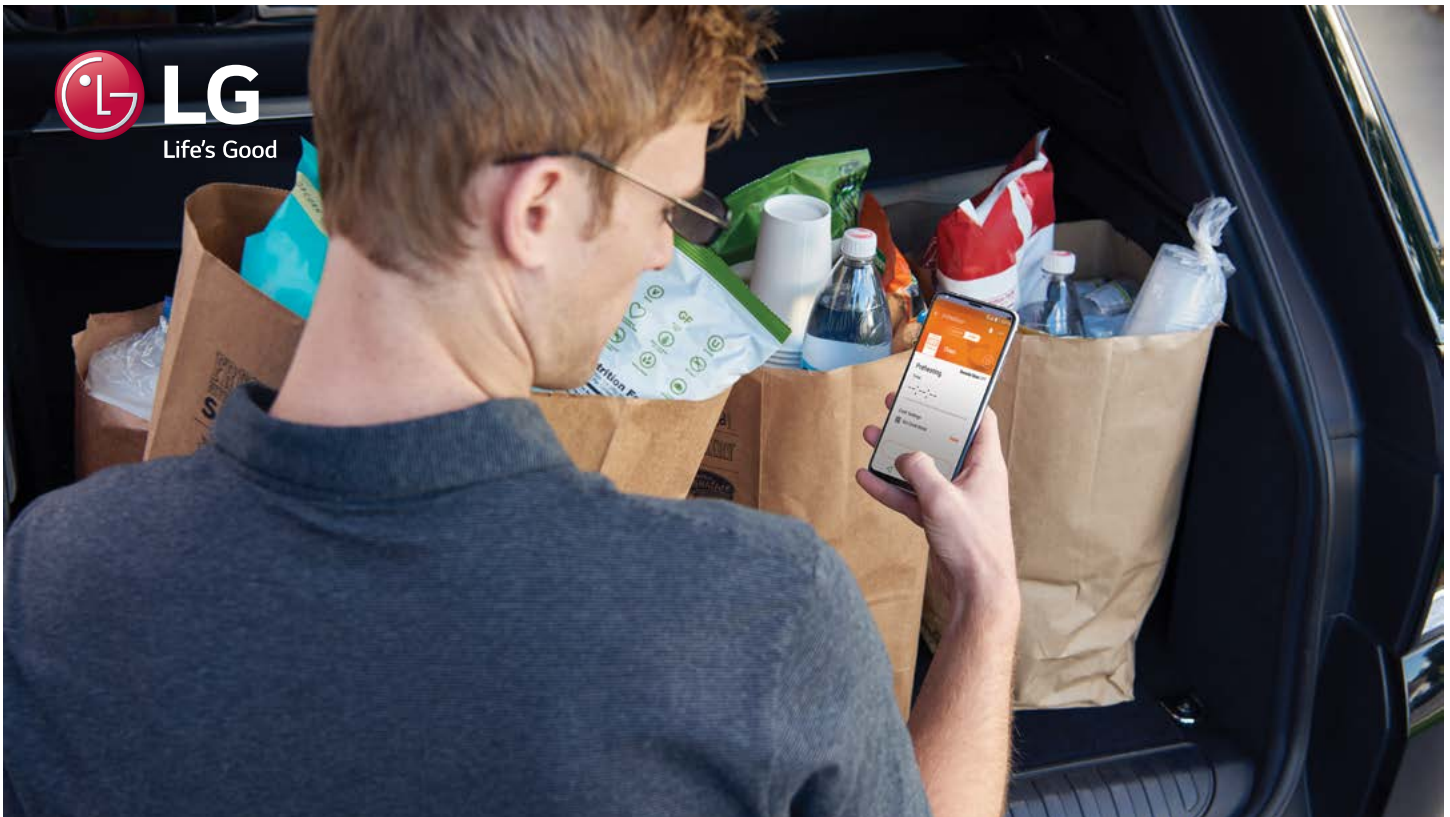
- 1 Take a photo of the camera icon below
- 2 Text the photo to 77228



NEED HELP?

Visit photoregister.com/help or text HELP to 77228.

- > Or visit us online at www.lgusa.com/register



Your new investment only has a 1 year limited warranty. An LG Premium Care* plan can keep it protected for 1-3 years after the manufacturer's warranty expires. It's simple, call or go online today!

Call or Go Online for a Free Quote

- > Call: 1.866.618.5775
- > Visit: www.lg.your-service-plan.com