

# ANCHEER

## E-bike User's Manual

### 1. Instruction



## 2. Meter operation

### a. Meter instruction



### b. Meter operation



To switch on/off the E-Bike system, hold the MODE button for 2s. The default value is level "low".

Press "+", its level "Mid".

Press "+" again, its level "High". Level "High" is the maximum power of PAS.

Change Electric Function: Press "-", until the "low""Mid""High" three light is off.

### c. Operation Cautions

Be careful of the safety use. Don't attempt to release the connector when battery is on power.

- Avoid the risk of collision.
- Don't modify system parameters to avoid parameters disorder.
- Make the display repaired when error code appears.

## 2. Safety instruction

1. Thank you for purchasing the ANCHEER E-BIKE. The E-BIKE features the most recent innovation in technology.
2. For Safety reasons, it is most important that you read this USER MANUAL **BEFORE** you operate the bike. Improper handling can reduce its riding performance and most importantly, pose danger to your safe and healthy.
3. For handling and maintenance of the bicycle, please refer to the E-BIKE User Manual which is an integral part of this e-bike User manual!
4. Do not at any time dismantle or disassemble any of the above e-bike components!
5. Please check all parts are tighten and locked before riding.
6. Please make sure that the charger and battery charging plug are always kept dry and does not get wet at any time.
7. The charger should only be cleaned with a dry cloth. Never use a wet cloth, oil or any other liquid.

## 3. Battery: further information and maintenance

1. Continuous Rand, loading weight, road condition and battery use by average are related, on the same condition, average speed can continuous longer travel range.
2. When storing the battery for a longer time period, (e.g. during winter time) it is important to place the full charged battery on a flat surface in a dry place.
3. **Attention:** The battery should be re-charged once every 1-2 month when it is not used. Negligence could lead to complete discharge of the battery and this would make the warranty on the battery void.
4. The discharging of the battery is due to chemical processes which are taking place within the battery cells. How much a battery discharges depends on the time it has not been used and the temperature it has been exposed to. Thus, a re-charge every 3 month, when not in use, is essential for the life-span of the battery.

## 4. Charging

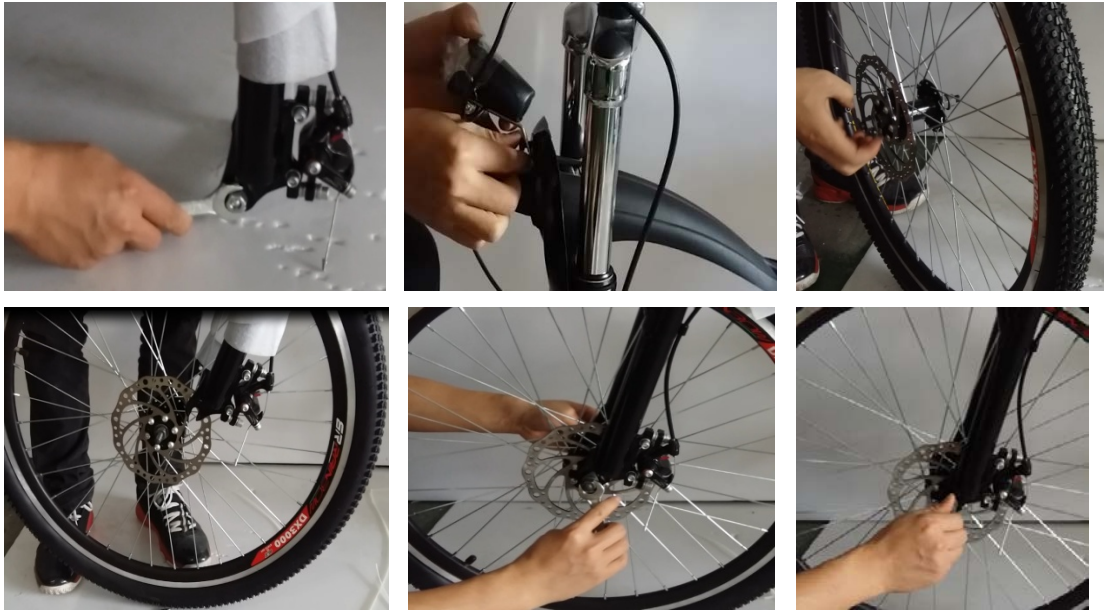
1. To charge the battery with the bike, simply place the bike within reach of the power supply and plug it in. **Note:** The plug hole is located in the right of controller.
2. The battery can either be charged while on the bike or the battery can be removed and charged at a place of your convenience.
3. When charging is complete the red led on the charger turns to green. Unplug the charger and you're ready to ride.
4. When charger output and input voltage are connected, the red light indicates it is in charging. The charging time is 4-6hours depend on battery capacity remain. The green light indicates the battery is fully charged. Please put off plug from wall socket.
5. **Warning:** Charging time over 10 hours is prohibited please kept it away from high temperature environment and stores it in a cool place. A re-charge every 1-2 month when not in use.

## 5. Installation Instruction

When open the bike's carton box, take out E-bike and use scissors to cut off the package strings.



1. Install the handlebar: use inner hexagon tool loosen the stem cover and don't not tighten all bolts immediately before adjusting the handlebar in a property angel and position, then tighten.



2. Install front wheel: **a:** take out a protection plate of the front fork and front hub, then take out front wheel **b:** install the Front fender and lamp, then used tool to tighten **c:** make sure front wheel is in line with the rear wheel and proceed to install and used tool to tighten (left and right)



3. Install pedals: Check 2 pedals, the one etched "L" should install in left side and "R" in right side. Please use wrench to tighten them.