

User Guide

E50 Eardrums

"Inspired by underdogs and big dreams, we are the brand that believes in you. I launched Raycon to inspire people that they can achieve greatness through hard work and passion.

The future is yours to grab. Aim high and never stop."

A stylized, handwritten signature in white ink, likely belonging to the founder of Raycon, is positioned in the bottom right corner of the page. The signature is fluid and cursive, set against a background of dark red wavy shapes.

Introduction

Welcome to your new Raycon E50 Eardrums Earphones!

At Raycon, we develop and design innovative electronics so you can move and conquer your daily fast-paced life.

Before using your product, we strongly encourage you to fully read through this user guide. You can also visit our support center at

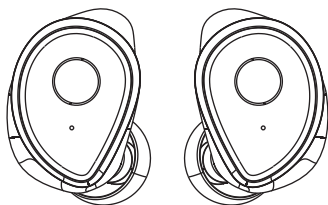
www.rayconglobal.com/support

This web page has more specific guidelines and helpful videos for you to navigate your product.

For best performance, charge fully before first use.

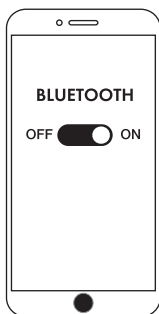
Pairing ID: Raycon E50 Eardrums

Quick Start Guide



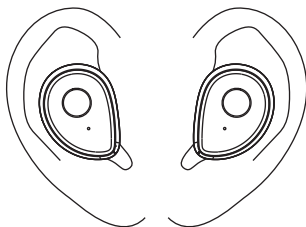
1

Take the earphones out of the capsule and both earphones will connect automatically.



2

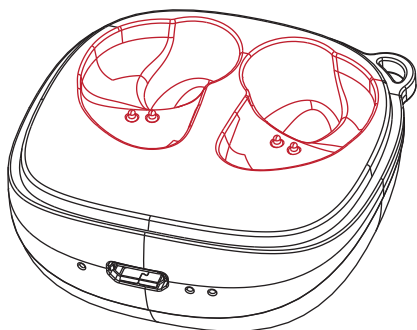
Turn on Bluetooth, search "Raycon E50 Eardrums" and click it to pair.



3

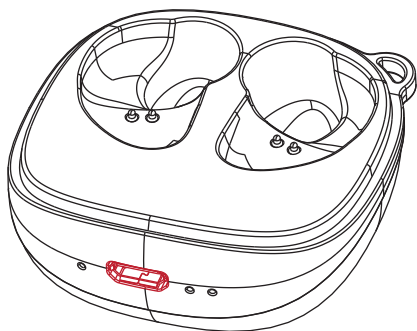
Enjoy your E50 Eardrums!

Charging your Earphones



1

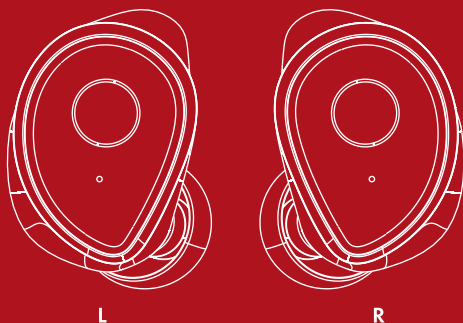
To charge your earphones, place them in the charging capsule.



2

Once your capsule runs out of battery, plug the charging cable in the back charging port and connect it to a power source.

Functions



Left Earphone

Right Earphone

Play / Pause
Answer / Hang up



Press Once

Play / Pause
Answer / Hang up

Previous song



Press Twice

Next song

Volume -



Press Three Times

Volume +

Power on / Siri
Reject Calls



Hold 2 sec

Power on / Siri
Reject Calls

Power off

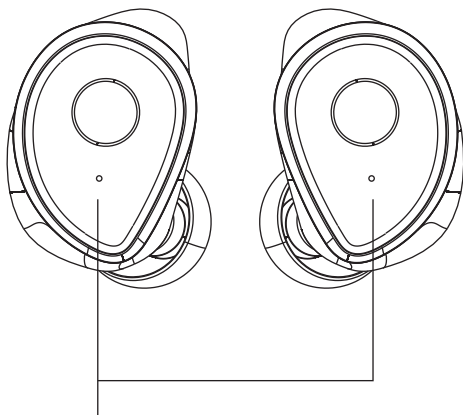


Hold 4 sec

Power off

You may also place the earphones into the capsule to power off.

Earphone Details



Charging:

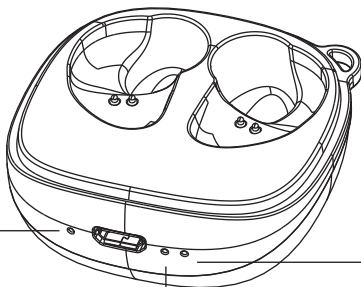
Both lights remain red

Fully Charged

Red LED lights turn off

- Call / Play: about **5** hours
- Standby: about **2,000** hours
- Sweat-resistant: **IPX4** rating

Capsule Details



Red:

Left earphone is being charged

Red:

Capsule is charging

Blue:

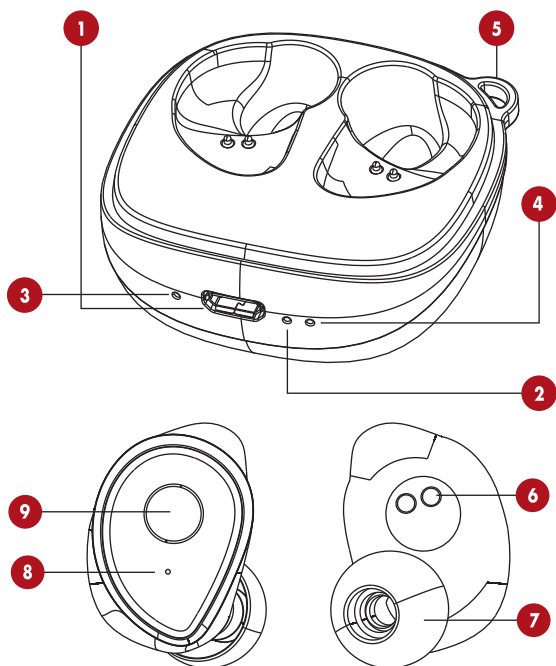
Capsule is fully charged

Red:

Right earphone is being charged

- Charge Capacity **5** times
- Charge time: **1** hour

Unit at a Glance



1. Charging Port

2. Charging Capsule Indicator

3. Left Earphone Charging
Indicator

4. Right Earphone Charging
Indicator

5. Cord Hook

6. Charging Connectors

7. Gel tips

8. Microphone / Earphone
Indicators

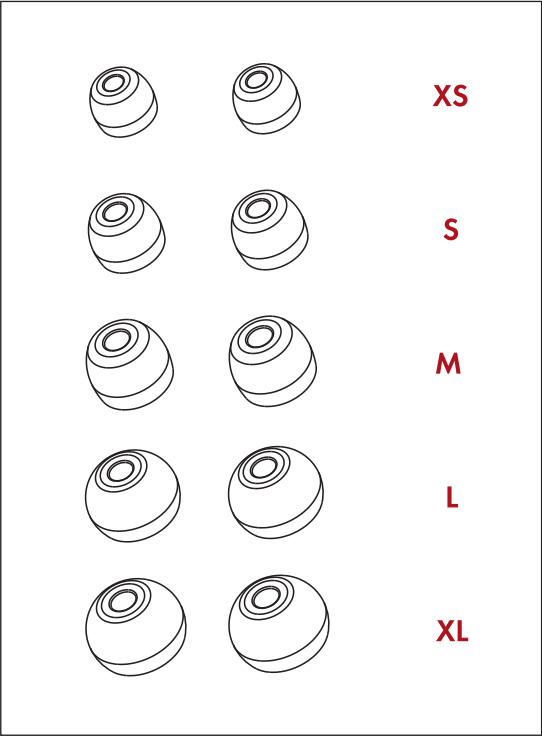
9. Control Button

Customization

Selecting the size of silicone gel tips:

The silicone gel tips with E50 earphones come in 5 sizes:
Extra small, small, medium, large, extra large.

Please select the right size according to your preference and fit it over the earphones.



FAQ and Additional Resources

For frequently asked questions about your device, simply go to www.ray-conglobal.com/support. Select the product and you will find more resources on how to operate your products including helpful tips and videos.

Safety Guidelines

Please follow the safety guidelines below at all times when operating or caring for your device.

- Be wary of any edges, uneven surfaces, and metal parts, including on accessories and product packaging, to prevent any possible injury or damage.
- Listen to music at a proper volume to avoid hurting your hearing and the earphones.
- Avoid storage in high temperatures, such as in a hot vehicle or in direct sunlight.
- Do not expose the earphones or any of its supplied parts to rain or other liquids.
- Do not drop or cause undue impact to the earphones.
- Do not modify, repair, or dismantle the product on your own.
- Do not use any dilutant or volatile liquid to clean the product.
- Do not use the product in a hazardous location.

Specifications

Model Number: RBE750

Bluetooth Connection Name: Raycon E50 Eardrums

Bluetooth Version: 5.0

Power Input: DC 5V / 1A

Earphone Battery Capacity: 3.7V / 50mAh X 2

Charging Capsule Battery Capacity: 3.7V / 750mAh

Call / Play Time: About 5 hours

Charging Time: About 1 hour

Support Profiles: HSP / HFP / A2DP / AVRCP

Sensitivity: 95 ± 3dB

Frequency Response Range: 20-20000Hz

Bluetooth Range: up to 10 meters

Support

If your device is not functioning correctly, please visit

www.rayconglobal.com/support for customer support, and we will be more than happy to help you.

Limited Warranty

For more information and instructions on how to get warranty service, visit **www.rayconglobal.com/warranty**.



@rayconglobal