

INSTALLATION INSTRUCTIONS

INCLUDES: 1 mobile, fully assembled

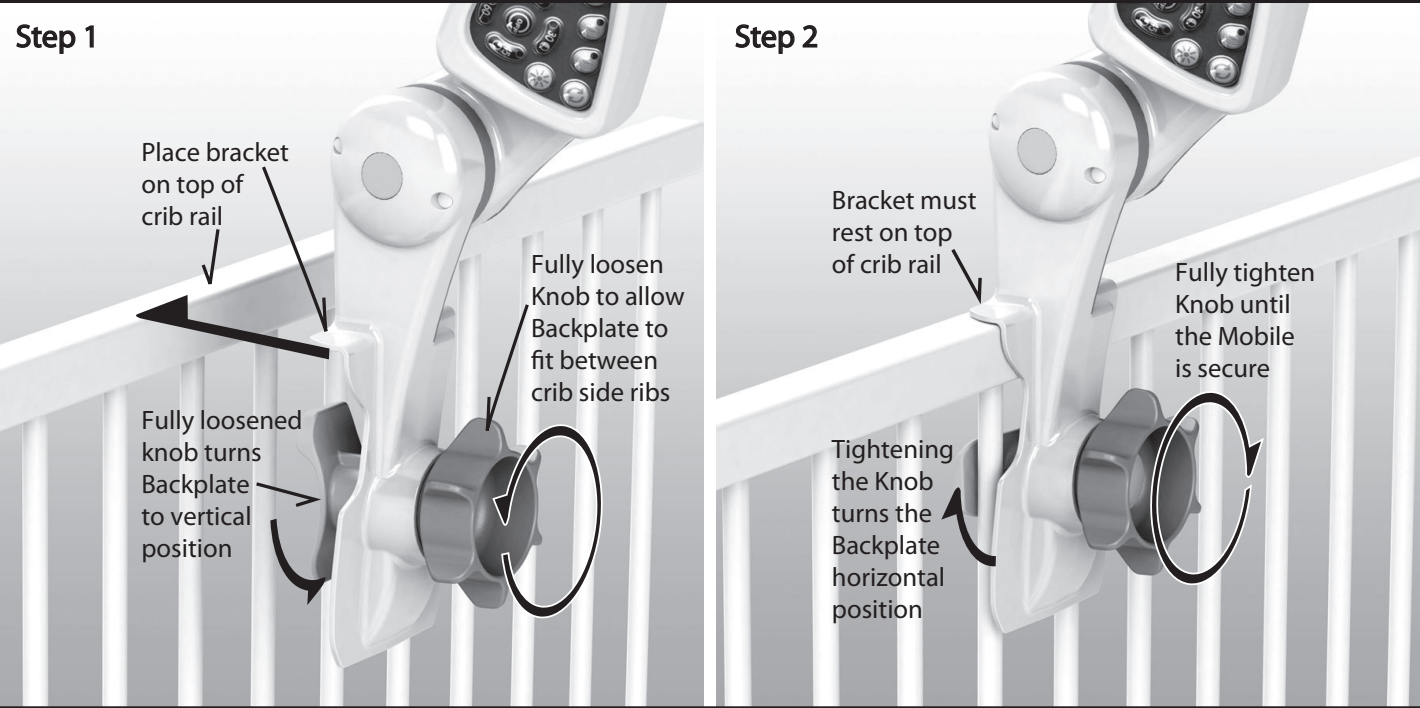
- Please keep these instructions for future reference as they contain important information.
- Requires 4 “C” (LR14) batteries (not included) – Adult required for battery installation
- Tool required for battery installation: Phillips screwdriver (not included.)

CARE

- Nurture Smart Mobile has been designed to be completely cleanable/disinfectable.
- Wipe entire mobile with cleaning/disinfectant cloths or with a clean cloth dampened with a mild soap and water solution.
 - Rinse all cleaning solutions from product before use with baby.
 - Do not immerse the mobile.

ATTACHING MOBILE TO CRIB RAIL

(By adult only)



WARNING:

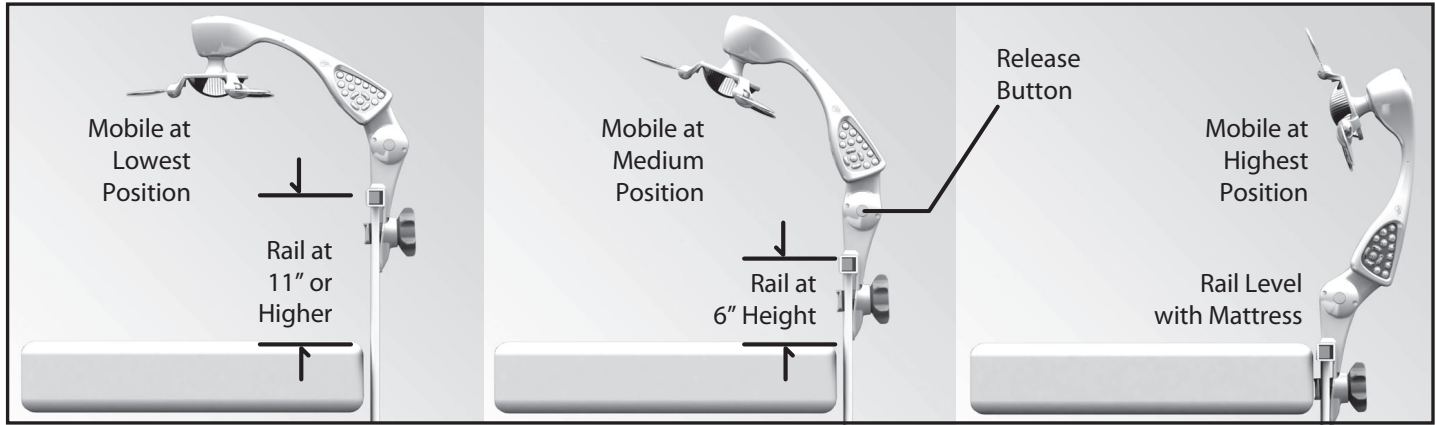
- Remove product from crib or playpen when baby begins to push up on hands and knees.
- A crib mobile is intended for visual stimulation and is not to be grasped by a child.
- This product does not replace adult supervision.
- This product will not attach to all crib designs. Do not add additional strings or straps to attach to crib or playpen.
- Make sure product is properly fastened to the crib rail with the knob tightened before use with infant.
- Check frequently to make sure attachment is secure.
- All cleaning materials should be rinsed from product before use with infant.
- Protect the environment by not disposing mobile with household waste (2002/96/EC). Check your local authority for recycling advice and facilities.



ADJUSTMENT, LABEL & BATTERY INFORMATION

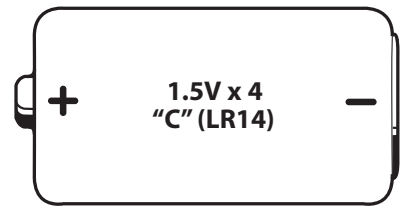
RAISING AND LOWERING MOBILE ARM

- To raise mobile arm away from crib, gently lift mobile arm until it locks into desired position.
 - To lower mobile arm, press Release Button (refer to diagram below) and lower arm to desired height.
- Note that pressing the button is not necessary to lift the arm.



BATTERY INSTALLATION

- Loosen the screw on the battery compartment cover (refer to the diagram) with a Phillips screwdriver and remove the cover.
 - Insert four (4) “C” (LR14) batteries according to the + and – indicators inside the compartment.
- Note that when sounds, light, or rotation feature become weak or sluggish, it is time to replace the batteries.



INSERTING PERSONALIZED LABEL

- Loosen the screw on battery compartment cover (refer to the diagram) with a Phillips screwdriver and remove the cover.
- Remove label insert (if any) and insert your custom label using the blank label(s) included or your own label cut to size.
- Replace battery compartment cover securely and tighten screw.



CAUTION BATTERY SAFETY INFORMATION

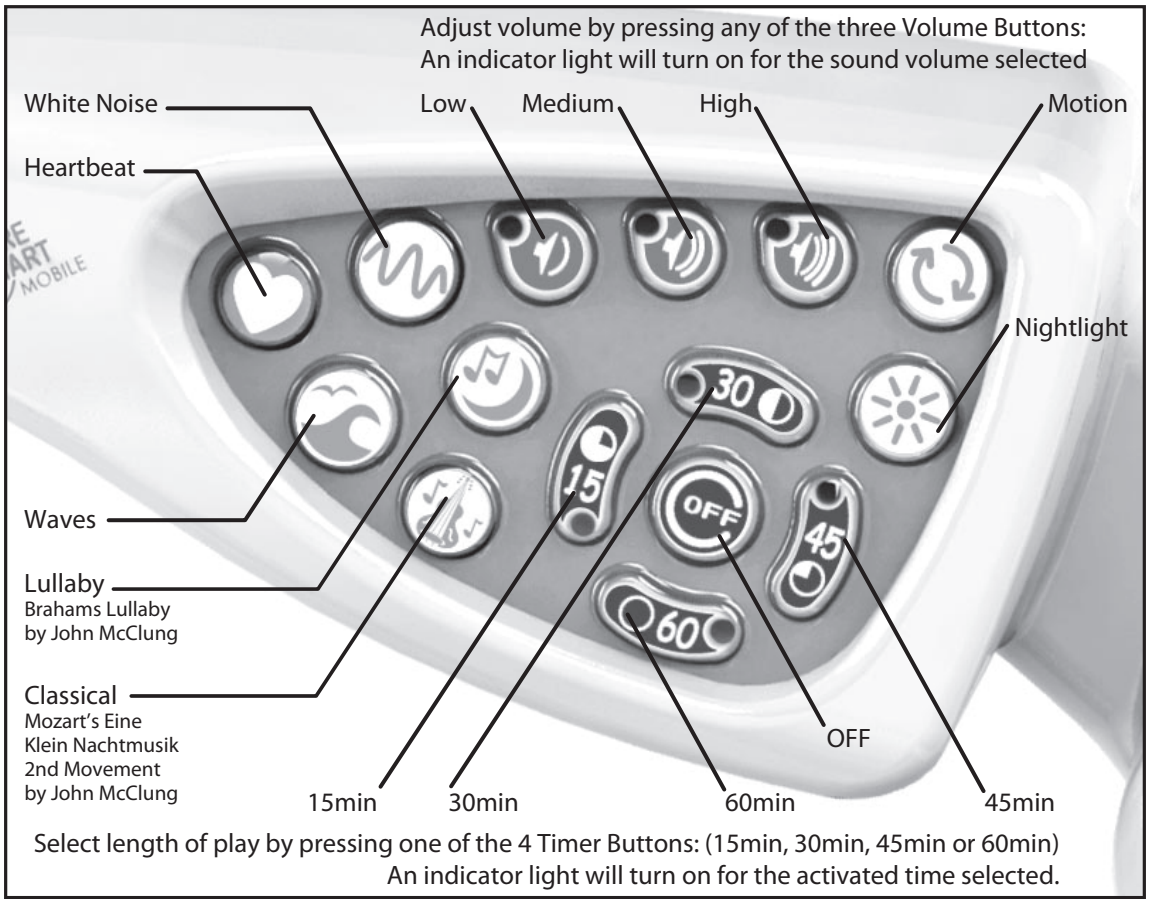
- In exceptional circumstances, batteries may leak fluids that can cause a chemical burn injury or ruin the mobile.
- To avoid battery leakage:
- Insert batteries as indicated inside the battery compartment.
 - Never dispose of mobile by fire as batteries may explode or leak.
 - Do not attempt to recharge non-rechargeable batteries.
 - If removable, rechargeable batteries are used, they are only to be charged under adult supervision.
 - Do not mix old and new batteries
 - Never short-circuit the battery terminals.
 - Dispose of batteries and product safely.
 - Do not mix different types of batteries, such as alkaline, standard (carbon-zinc), or rechargeable (nickel-cadmium) batteries
 - Remove batteries during long periods of non-use. Always remove exhausted batteries from the product.
 - Remove rechargeable batteries from the product before charging.

OPERATION CONTROLS, PADDLES & CONTACT INFORMATION

The Nurture Smart Mobile has sound, motion, and light functions. The three functions can operate independently or in any combination. The selected functions will operate for 15, 30, 45, or 60 minutes depending on the time selected.

Turn Mobile ON

by Pressing any Function Button: Sounds, Motion, or Nightlight



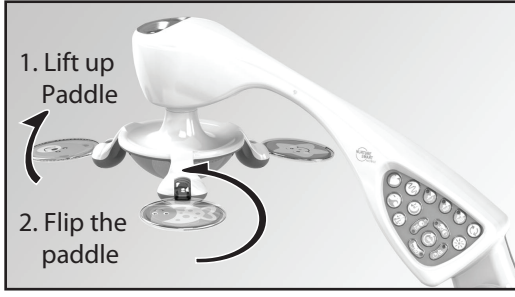
Turn Mobile OFF

Press “OFF” BUTTON to turn sounds off or to stop all functions.

- To change the timer setting, press a new Timer Button and the timer will reset to the new selection.
- If different function buttons are activated or changed during a timer countdown, the Timer Button in operation will continue its countdown with the new sound/function(s).
- Once the timer has elapsed and mobile function(s) have stopped, any new function buttons pressed will start the mobile with the previous timer and sound volume.
- If the Rotation Feature and/or the Nightlight Features are operating, they can be turned off independently by pressing the particular function button again.
- To turn off Sound, the "Off" Button must be pressed. This will turn off all functions.
- To only change a sound selection while the mobile is on, press the desired sound button.

ROTATING IMAGES FROM BLACK & WHITE TO COLOR

To flip images from black and white to color, gently lift disc(s), rotate to desired image, and gently lower into position (do not force.)



Contact Information
Visit us on-line at www.MoreThanPlay.com
Call More Than Play
(520) 547-0921
8 AM- 5 PM EST

Write to us at:
More Than Play
Consumer Relations
1861 West Grant Road,
Tucson, AZ 85745
U.S.A.

Nurture Smart Mobile™ By More Than Play™
a division of PlayAbility Toys™, LLC
©2015 PlayAbility Toys™, LLC

Patent Pending. Colors and images may vary
Designed in the U.S.A. with the help of
Psychologists and Child Life Specialists

Made in China
More Than Play™ products are made to the highest standards of quality to comply with all applicable government safety regulations.
Conforms to the Safety Requirements of ASTM F963, ASTM F2088 and EN71

The Most Advanced Mobile Ever Created!