

POWERNAIL® CO.

Powernail Electric PowerTacker™



OPERATION AND MAINTENANCE MANUAL MANUAL DE OPERACION Y DE MANTENIMIENTO MANUEL D'INSTRUCTIONS ET D'ENTRETIEN

WARNING



Read this manual before you use this electric Powerstapler®. Follow all safety warnings and instructions. If you are uncertain about the operation of the nailer, call us directly at 1-800-323-1653 for assistance or contact the closest Powernail Dealer for help. Please retain this information for future reference.

REV 16.06.15

INTRODUCTION

The Pownail trigger-pull Carpet Tacker is designed to bring Pownail quality and flooring expertise to an electric stapler. The Pownail carpet tacker is designed for use with 9/16" staples.

The Pownail PowerTacker™ is designed to be used for installation of carpet and carpet padding.

INDEX

Index.....	2	Disassembly/Reassembly.....	8
Warranty.....	2	Maintenance.....	7
Safety.....	3	Troubleshooting Chart.....	9
Operation.....	4-5	Schematic / Parts List.....	10-11
Loading Staples.....	6	Power Cord Info.....	8
Clearing a jam.....	7	Phone Support.....	12
Safety Labels.....	7	Web Site.....	12

LIMITED WARRANTY

POWERNAIL® Company, Inc. warrants to its customer, and to the first end-use purchaser of POWERNAIL trigger-pull PowerTacker™ purchased from an authorized POWERNAIL distributor, that each serialized manufactured trigger-pull PowerTacker™ by POWERNAIL®, for a period of 12 months from the date of purchase, and with respect to the PowerTacker™ power cord for a period of 100 days; shall be free of defects in materials and workmanship and will meet POWERNAIL'S specifications in effect at the time of product shipment. POWERNAIL will repair or replace, at its option, any Pownail PowerTacker™ that does not conform to this warranty. Claims must be made no later than fifteen (15) days after the end of the warranty period. POWERNAIL will perform all repair or replacements itself or through its authorized contractors. POWERNAIL is not responsible for shipping, labor or other direct or indirect costs. Damage caused by abuse, misuse, unusual or excessive wear is excluded. Repair or modification of the Products by unauthorized parties will void this warranty. The customer is responsible for returning Products to POWERNAIL for verification of nonconformance. Warranties for Products not manufactured by POWERNAIL are limited to warranties provided to POWERNAIL by the manufacturer of such product that are assignable to customer.

THESE WARRANTIES AND REMEDIES ARE EXCLUSIVE OF ALL OTHERS, EXPRESS OR IMPLIED. THE WARRANTIES OF MERCHANTABILITY AND FITNESS FOR PURPOSE ARE EXPRESSLY EXCLUDED. IN NO EVENT SHALL POWERNAIL'S LIABILITY FOR A WARRANTY CLAIM EXCEED THE PRICE PAID TO POWERNAIL FOR THE NONCONFORMING PRODUCT, REGARDLESS OF THE FORM OR BASIS OF THE CLAIM OR CAUSE OF ACTION.

SAFETY INSTRUCTIONS



When operating this stapler, the operator and others in the work area should ALWAYS wear approved SAFETY GLASSES, with front and side eye protection (i.e. OSHA required iZ87i safety glasses). Eye protection will help guard against flying staples and debris, which could cause severe eye injury.



EAR PROTECTION should be used to prevent hearing damage when there are high noise levels in the work area. ALWAYS use ear plugs with a noise reduction rated at 29 db or higher at a construction site.

To prevent accidental misfire, always **unplug the power cord** before making any adjustments, repairing, clearing jams or when the stapler is not in use. Do not use on scaffolding or ladders and disconnect power cord from electricity when transporting between work areas. Never carry with finger on switch and be sure switch is off when plugging in.



Never place any part of the body in the discharge path of the carpet tacker when air is connected to the stapler. Never point the tool at yourself or others, even if the tool is not loaded. Never leave the carpet tacker unattended while it is plugged in to a power source. For safety, keep tools locked up and out of reach of children.

Use only Powernail replacement parts in the repair or maintenance of this carpet tacker. Parts or repair services are available from the manufacturer or from agents authorized by the manufacturer. Repairs should be carried out only by trained service personnel in the field of fastener driving tools who will observe proper safety controls while performing maintenance. Service personnel should be qualified to assess the safe working condition of fastener driving tools.

When not in use, the tool should be cleaned, fully assembled and then stored in a dry location. This will extend the life of the tool and reduce any oxidation. To guard against electric shock, do not use tool in rain or wet environment and prevent body contact with grounded surfaces such as pipes, radiators, ranges, etc.

Keep work area clean. Cluttered work areas invite injuries. Dress properly. Be sure not to wear clothing or jewelry that may get caught in moving parts. Rubber gloves and non-skid footwear are recommended when working outdoors. Wear protective hair covering to contain long hair.

Keep work area well lit. Keep children away and visitors away from work area. Do not let visitors contact tool or extension cord. Do not operate tool when you are tired. Always stay alert and watch what you are doing.

OPERATION

The Powernail PowerTacker™ is designed for use with 9/16" long staples with a 3/16" crown.

APPLICATIONS

Carpet and Carpet Pad Installation

*Only use tool for its intended purposes. Drive fasteners into work surfaces only; never into materials too hard to penetrate.



1. Hold the tool by the handle.
2. Place the nose of the tool where you want to drive the staple.
3. Keeping a firm grip, pull the trigger with your index finger.

WORK TIPS

Before using this tool, carefully check that all parts are working correctly. Do not use the tool if it is not operating correctly, check for causes and adjust as necessary for proper operation.

When unplugging the tool, always grasp the base of the power cord to pull the plug. Do not unplug by pulling on the power cord.

Secure your work. Use clamps or a vise to hold your work project in place. It is safer than using your hands and it frees both hands to operate tool.

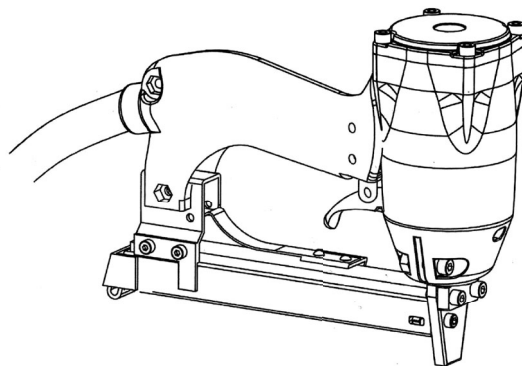
Do not drive fasteners on top of other fasteners or with tool at too steep of an angle; the fasteners may ricochet and injure someone.

Do not staple too close to the edge of the work surface. The work piece is likely to split and the fastener could fly free or ricochet and injure someone.

Do not fire into hard materials or attempt to use on hard or brittle materials such as concrete, steel or tile.

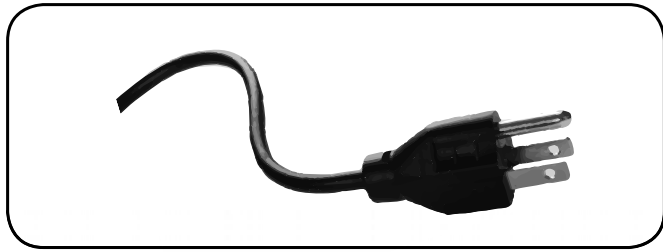
During operation, the stapler may be warm to the touch. This is normal. However, if the tool begins to feel hot, slow down tacking speed. If the unit continues to be hot, discontinue use until it cools.

Avoid firing the stapler when empty as it puts unnessecary wear on internal components and can shorten the life of the tool.

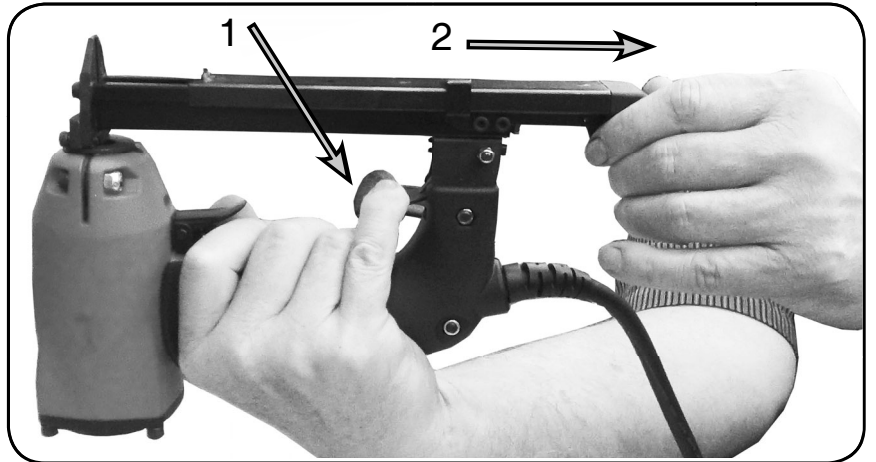


LOADING STAPLES

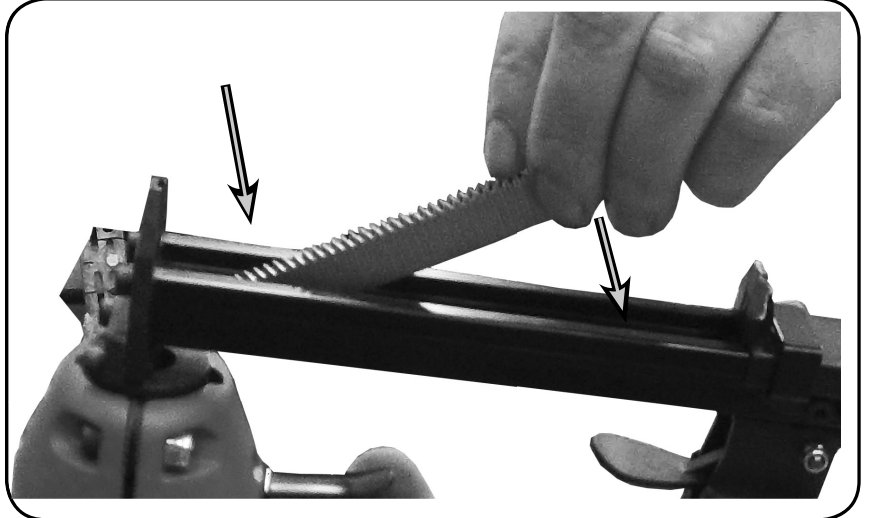
1. Unplug the stapler power cord. To prevent wear, always grasp the base of the power cord to unplug.



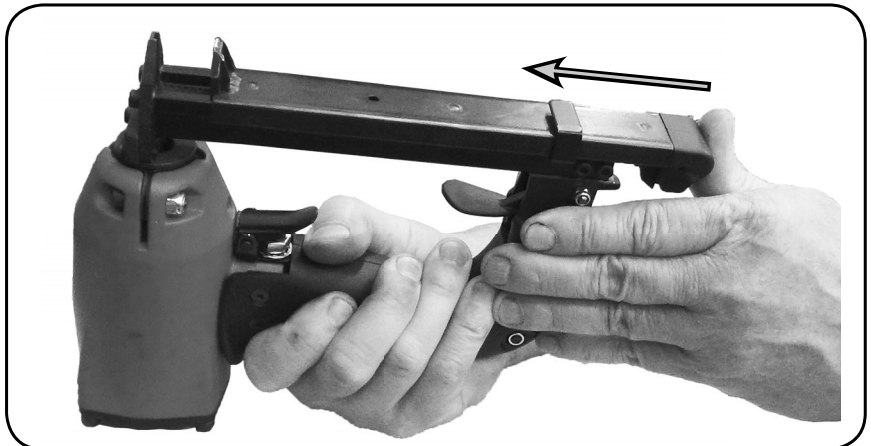
2. Hold the tool upside down, and depress the magazine latch. Pull back on the magazine cover.



3. Insert a strip of fasteners into the magazine. Make sure the crown of the fasteners are resting in the magazine.



4. Push the magazine cover forward until the latch catches.



CLEARING JAMS

CAUTION: Always unplug the tool power cord before adjusting the tool, clearing jams, servicing, carrying to a new work location, or when not in use.

For fasteners jammed inside the magazine:

1. Unplug tool power cord.
2. Press down latch and pull back on magazine.
- 3 Remove jammed fasteners using pliers if needed.
4. Push magazine cover forward until latch catches.

For fasteners jammed in discharge area :

1. Unplug tool power cord.
2. Grab jammed fasteners with pliers and remove.
3. If fastener can not be reached from discharge area refer to above for fasteners jammed inside the magazine.
4. Push magazine cover forward until latch catches.



Use a needle-nose pliers to remove jammed staples

STAPLER SAFETY LABELS



Powernail PowerTacker™ TECHNICAL SPECIFICATIONS

Power Source:	15 Amps 120 Volts 60 Hz Single Phase
Dimensions:	9" L x 7.5" H x 2.75" W
Weight:	3.25 lbs.
Fastener Capacity:	85 staples
Fastener Type:	20 Gauge 3/16" Crown
Fastener Lengths:	1/4" , 5/16" , 3/8" , 1/2" , 9/16"

Inspect your tools power cord regularly and ensure that all power and extension cords are in good working condition. Any damages cords or connectors should be replaced.

This tool should be grounded while in use to protect the user from electric shock. Use only 3-wire extension cords that have 3-prong grounding type plugs and 3-pole receptacles that accept the tool plug. Always replace or repair damaged cords.

Improper extension cord use may result in the risk of fire and/or electric shock.

If an extension cord must be used, always be sure :

- That the plug of the extension cord are the same number, size and shape as the pins on the plug of the tool.
- That the extension cord is properly wired and in good condition.
- The wire size is large enough to carry the full AMP rating of the tool.
- CAUTION:** An undersized cord will cause a drop in tool voltage resulting in loss of power and overheating. If in doubt, use the next heaviest gage.
The smaller the gage number, the heavier the cord required for safety.

Recommended Minimum AWG Size for Extension Cords.				
Cord length (Feet):	25 ft	50 ft	100 ft	150 ft
AWG size (gage):	14 gage	14 gage	12 gage	12 gage

Voltage warning : before connecting this tool to a power source (outlet, receptacle, etc.), be sure that the power supply is of the same voltage as specified on tool.

Use of higher voltage than specified could result in serious injury to the user and damage the tool. Use of a lesser voltage can also cause damage to tool. Never connect tool to a dc power source. To guard against electric shock, prevent body contact with grounded surfaces such as pipes, radiators, ranges, etc. While in use, do not touch metal parts of tool. Only hold plastic handle.

Do not abuse power cord. Never carry tool by cord or yank it to disconnect from receptacle. Keep cord from heat, oil and sharp edges. Disconnect tool when not in use, before servicing and when changing accessories. When tools are used outdoors, use only extension cords intended for outdoor use.

TROUBLE SHOOTING CHART

Here are some common issues that may occur during use.

If the stapler is not working as it should, stop using the tool immediately and resolve the issue before continuing.

	PROBLEM	POSSIBLE CAUSE	SOLUTION
1	Tool repeatedly jams	1. Wrong staple size 2. Bent staple pusher 3. Clogged or damaged nose. 4. Misaligned magazine cover	1. Use only the correct size staples 2. Replace staple pusher 3. Unclog or replace nose 4. Replace or service magazine cover
2	Tools works but no staple comes out	1. Jammed staple-feed pusher	1. Open staple-feed magazine cover and unjam staple-feed pusher
3	Poor drive	1. Overheated tool 2. Extension cord gauge too small	1. Allow to cool 2. Use properly rated extension cord.
4	Tool will not operate	1. Plug or extension cord not getting power. 2. Trigger switch failure 3. Line cord damaged 4. Jammed driver blade/plunger	1. Check outlets and cords are live 2. Have trigger switch serviced 3. Have line cord serviced 4. Unjam driver blade/plunger
5	Tool overheats	1. Extension cord gauge too small 2. Using at too fast a pace	1. Use properly rated extension cords. 2. Pace work at a more reasonable speed for the tool.

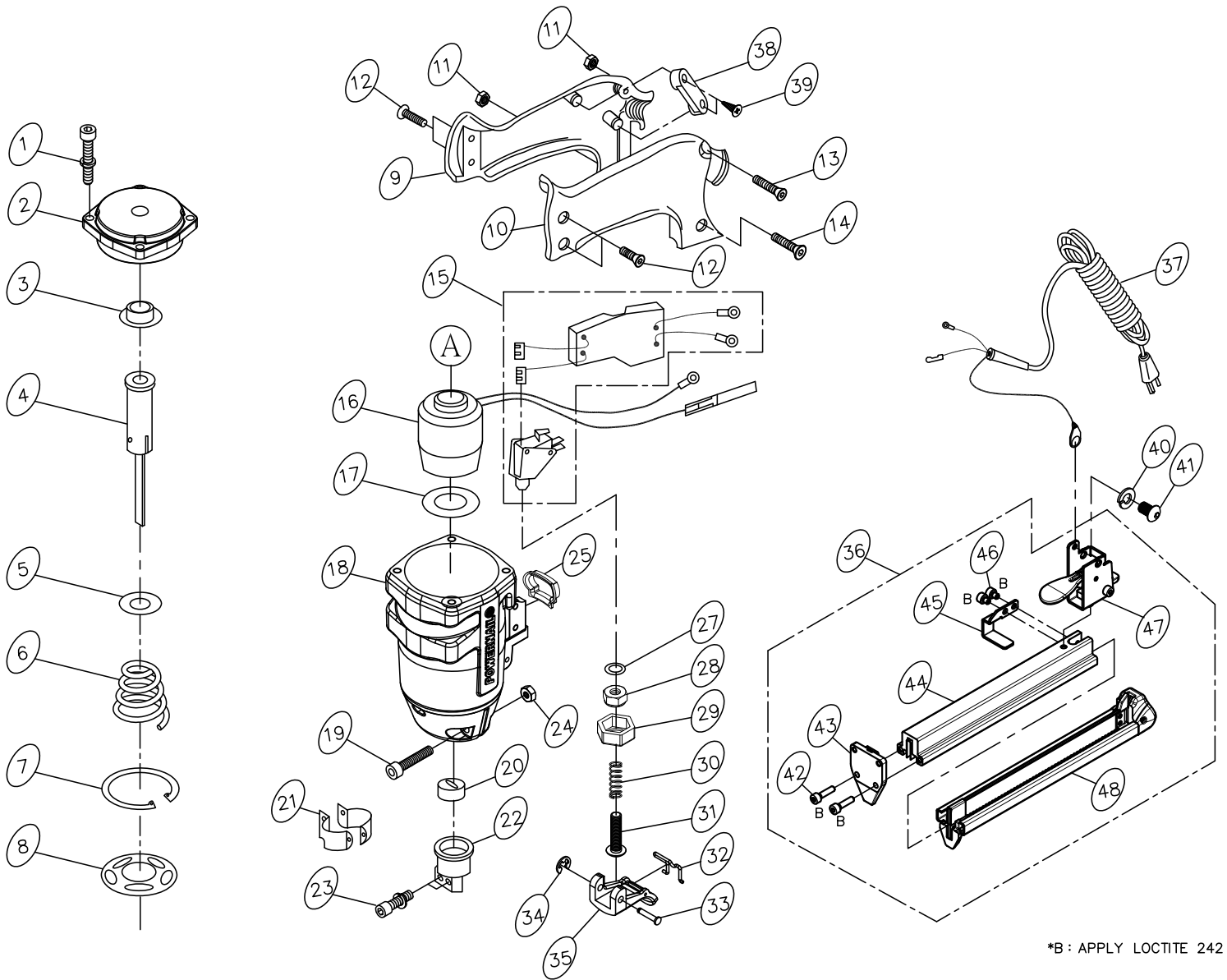
Powernail PowerTacker™ PARTS LIST

DESCRTIPTION	PART #
1 Screw M5x20	09-54E001
2 Cylinder Cap Assembly	n/a
3 Bumper (Cap)	n/a
4 Plunger Assembly	09-54E004
5 Plunger Disc Retaining Washer	n/a
6 Return Spring	09-54E006
7 C-ring	n/a
8 Plunger Valve	n/a
9 Handle (Right)	09-54E009
10 Handle (Left)	09-54E010
11 Nut M5	09-54E011
12 Screw M4x10	09-54E012
13 Screw M5x22	09-54E013
14 Screw M5x30	09-54E014
15 Switch and Circuit Board Assembly	09-54E015
16 Coil & Washer Assembly	n/a
17 Rubber Washer	09-54E017
18 Tool Body	n/a
19 Screw 10-32x7/8	09-54E019
20 Bumper	09-54E020
21 Clamp	n/a
22 Nose Retainer	n/a
23 Screw M4x12	09-54E023
24 Nut 10-32	09-54E024
25 Sleeve	09-54E025
27 Lock Washer	09-54E027
28 Nut	n/a

DESCRTIPTION	PART #
29 Trigger Nut Seat	n/a
30 Spring	n/a
31 Contact Button	n/a
32 Safety Buckle	n/a
33 Pin	n/a
34 Retainer Ring	n/a
35 Trigger	09-54E035
36 Magazine Assembly	n/a
37 Cord Assembly 14 Gauge	n/a
38 Holder	n/a
39 Screw M4x16	n/a
40 Spring Washer	n/a
41 Screw 5/32x1/2	n/a
42 Screw M4x16	n/a
43 Nose	09-54E043
44 Magazine	n/a
45 Stopper	n/a
46 Screw M4x05	n/a
47 Release Lever Assembly	09-54E047
48 Staple Guide Unit	n/a

KEY: S=Sold Separately, n/a Not available separately, KIT=Sold as part of a Kit

Pownail PowerTacker™ SCHEMATIC



*B : APPLY LOCTITE 242

POWERNAIL COMPANY, INC.
1300 Rose Road, Lake Zurich, IL 60047 US
Phone: 1-800-323-1653 or 847-847-3000
www.powernail.com