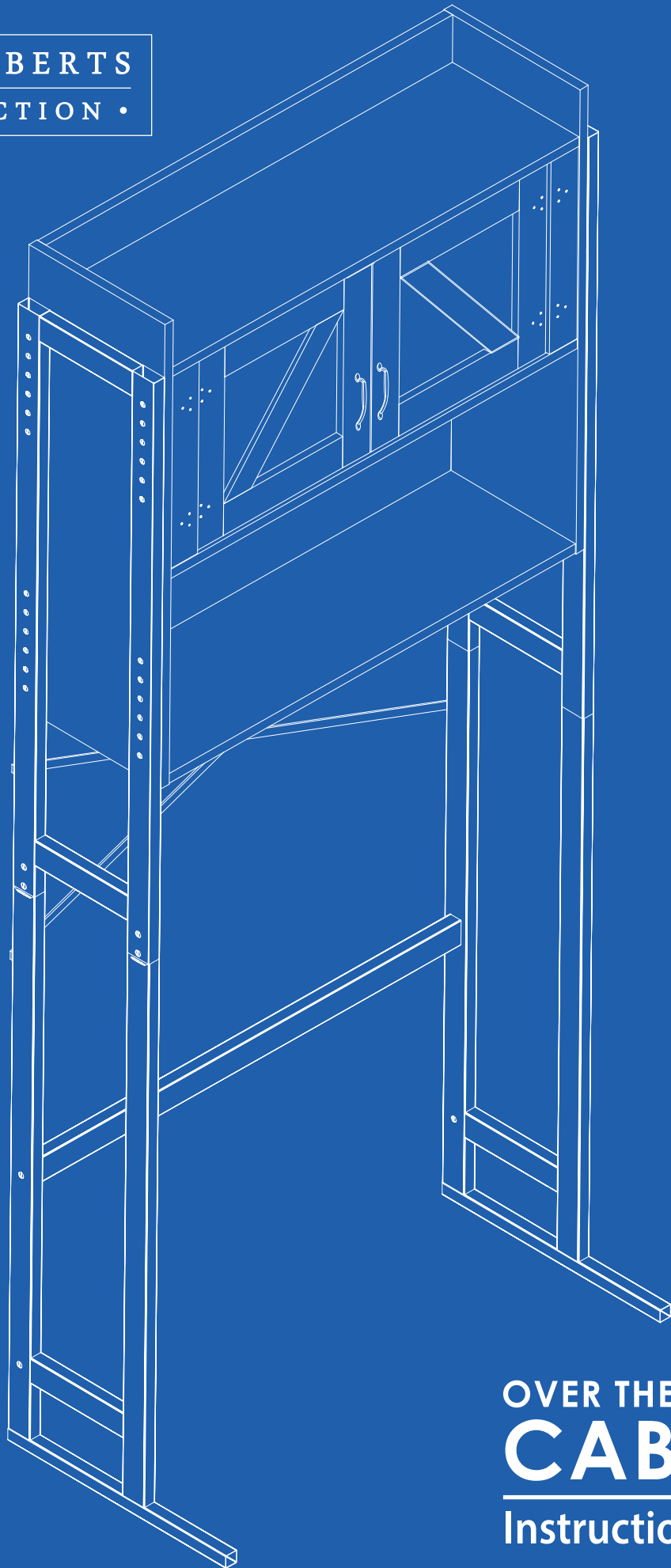


STEPHAN ROBERTS

• HOME COLLECTION •



OVER THE WASHER
CABINET
Instruction Manual

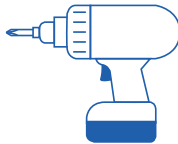
Notice:

- Please keep this instructions for future reference.
- Please do not exceed weight limitations of this item.
- Do not stand or use this product as a ladder.
- Firmly secure all bolts, knobs and screws before use.
- Reconfirm that all bolts, screws, and knobs are secure every 90 days.
- Do not store this product near open flames.
- Be aware that some parts are heavy and/or have sharp edges.
- Use product as instructed.
- If any parts are missing, broken, damaged, or worn, stop using this product until repairs are made and/or factory replacement parts are installed.

Tools Required:



Phillips Cross Bolt Screwdriver



Electric Drill (Optional)



50LB
Capacity



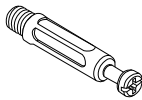
1 Person
Assembly



Up to 45
Minutes To
Assemble

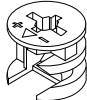
Hardware List:

Lag Bolt



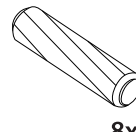
A 28PCS

Lag Nut



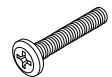
B 28PCS

Dowel



8x40
C 16PCS

6x30mm Screw



M6x30
D 8PCS

13mm Screw



M8x13
E 8PCS

6x20mm Screw



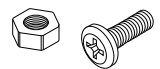
M6x20
G 4PCS

14mm Screw



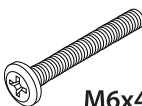
3.5*14
H 8PCS

Bolt & Nut



I 1PCS

40mm Screw



M6x40
J 2PCS

Handles & Screws



K 2SETS

8x20mm Screw



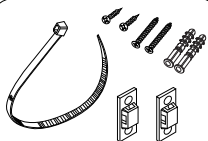
M8x20
L 4PCS

Optional Foot



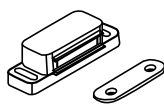
M 4PCS

AntiTip Kit



N 1SETS

Door Fastener
& Plate



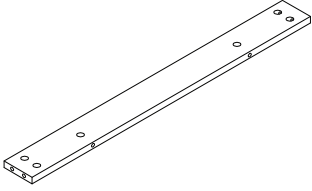
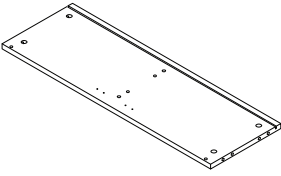
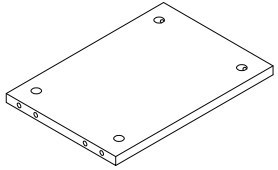
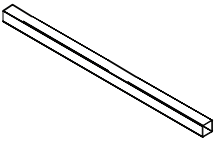
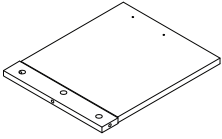
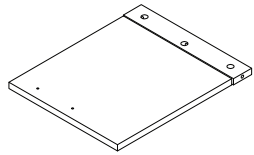
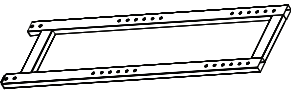
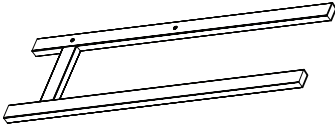
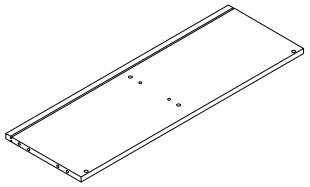
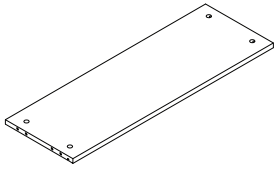
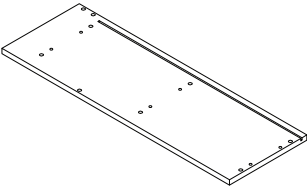
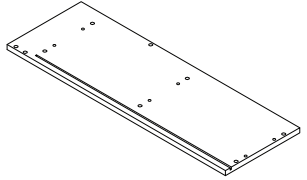
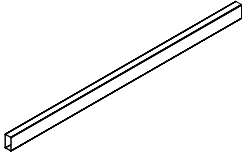
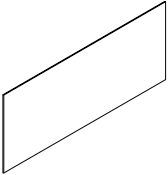
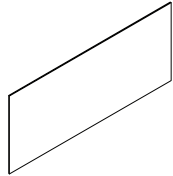
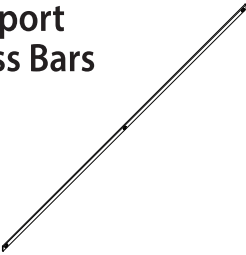
O 2SETS

Lag Nut Cap

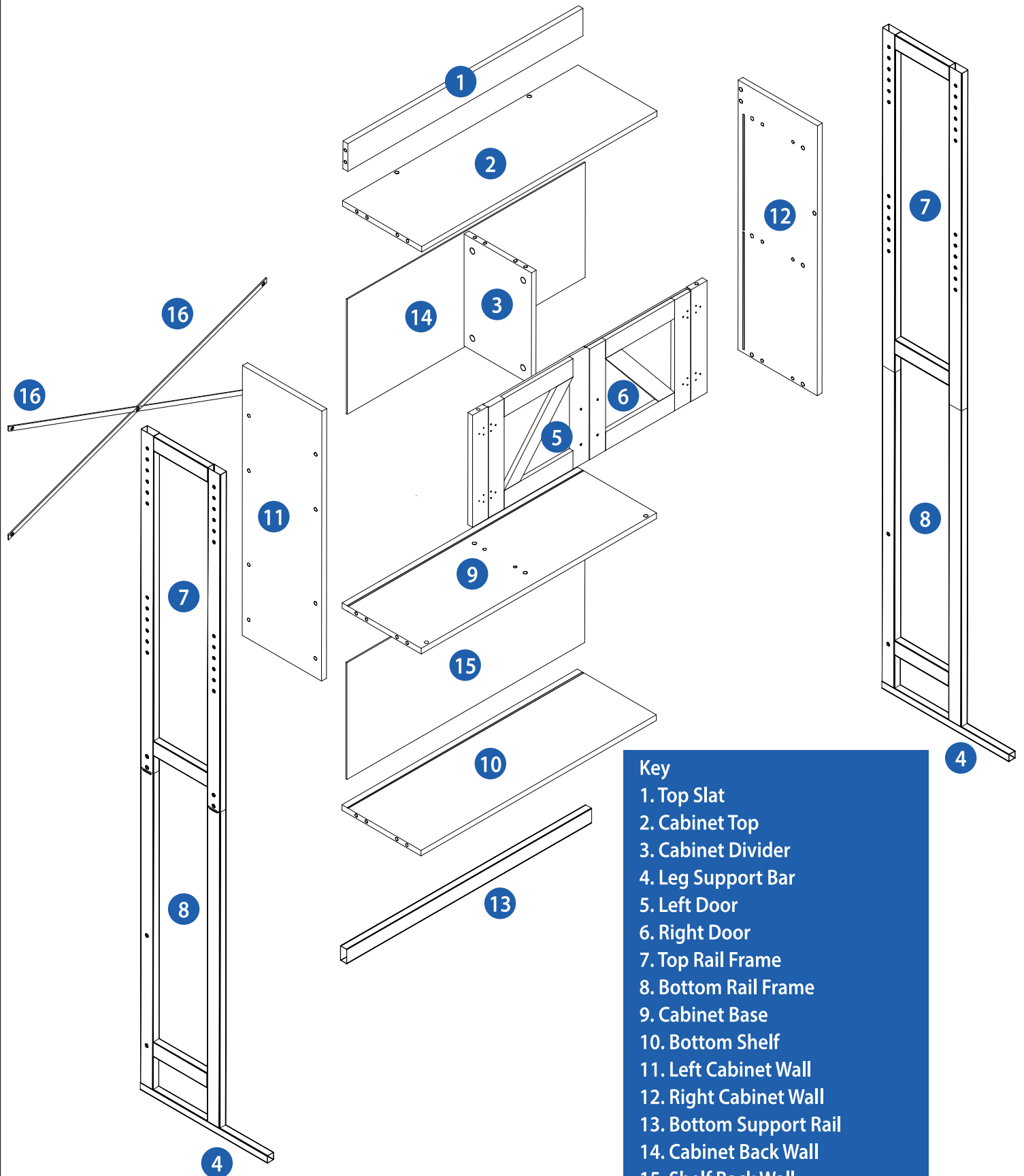


P 28PCS

Parts List

1 Top Slat 740*75  1PCS	2 Cabinet Top 740*250  1PCS	3 Cabinet Divider 305*212  1PCS
4 Leg Support Bar  2PCS	5 Left Door 368*300  1PCS	6 Right Door 368*300  1PCS
7 Top Rail Frame  2PCS	8 Bottom Rail Frame  2PCS	9 Cabinet Base 740*250  1PCS
10 Bottom Shelf 740*250  1PCS	11 Left Cabinet Wall 735*250  1PCS	12 Right Cabinet Wall 735*250  1PCS
13 Bottom Support Rail  1PCS	14 Cabinet Back Wall 750*214  1PCS	15 Shelf Back Wall 750*319  1PCS
16 Support Cross Bars  2PCS		

Parts Overview

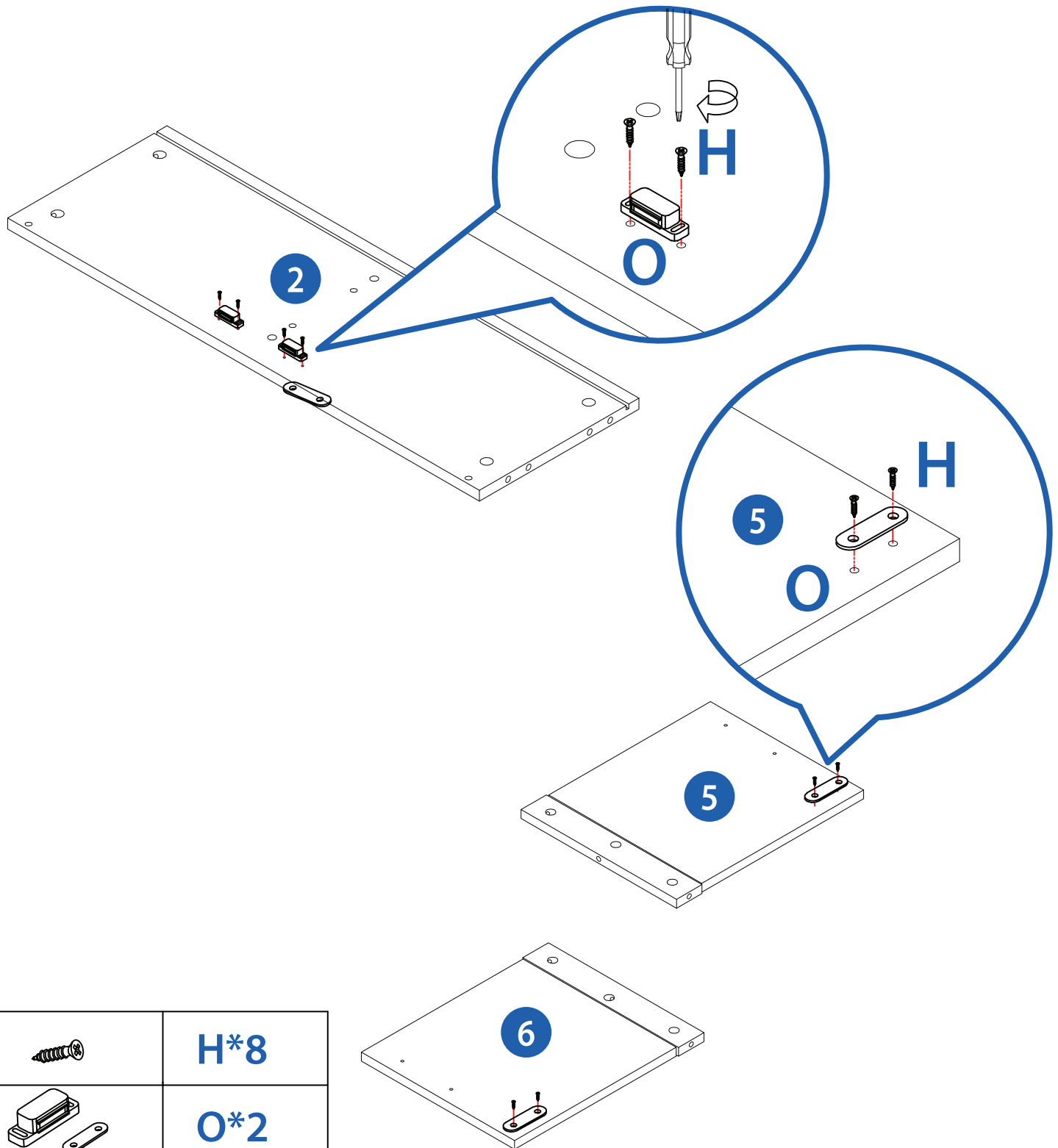


Key

1. Top Slat
2. Cabinet Top
3. Cabinet Divider
4. Leg Support Bar
5. Left Door
6. Right Door
7. Top Rail Frame
8. Bottom Rail Frame
9. Cabinet Base
10. Bottom Shelf
11. Left Cabinet Wall
12. Right Cabinet Wall
13. Bottom Support Rail
14. Cabinet Back Wall
15. Shelf Back Wall
16. Support Cross Bars

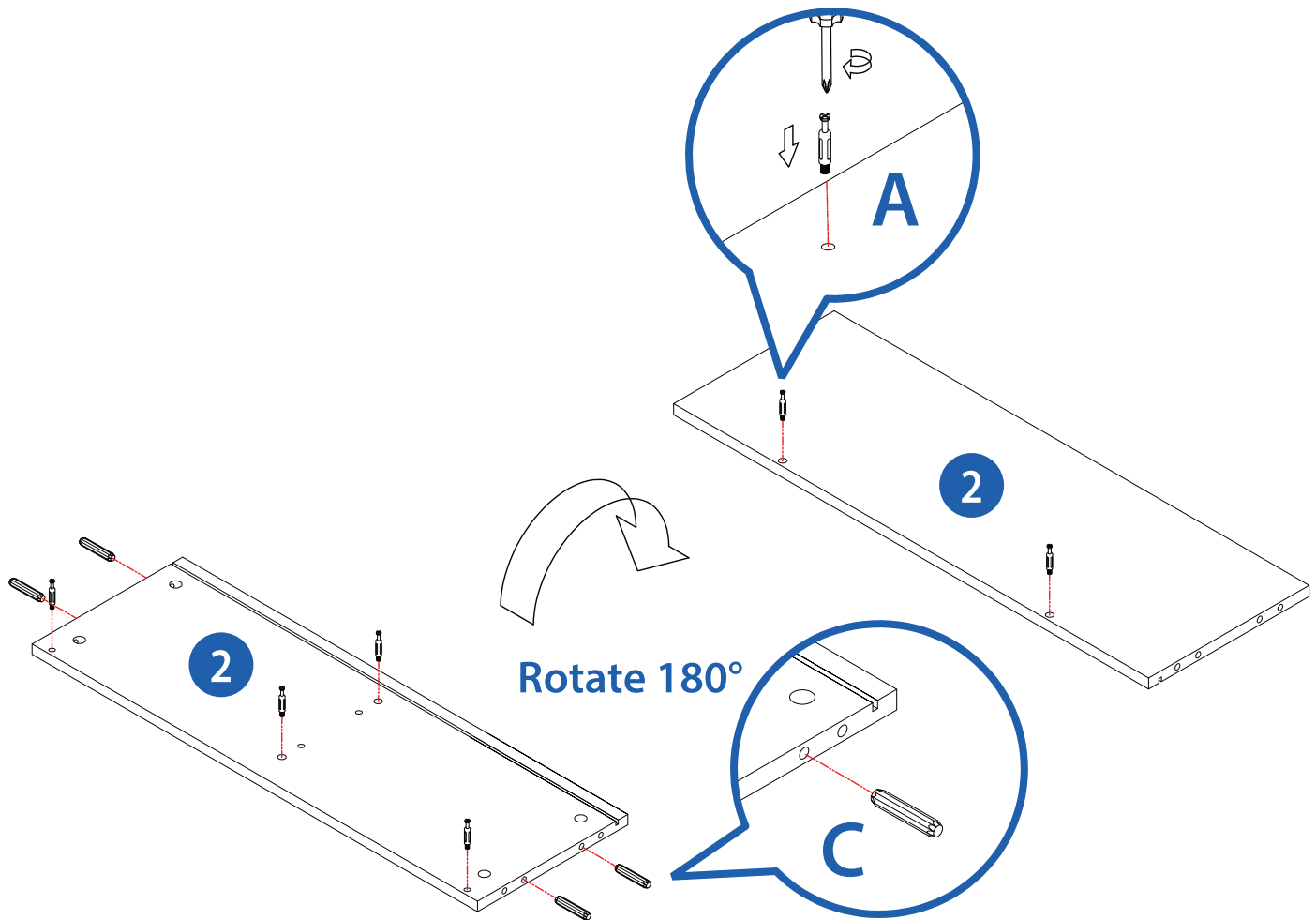
Product Assembly

Attach Door Fastener to Cabinet Top and attached Fastener Plate to Left & Right Door.

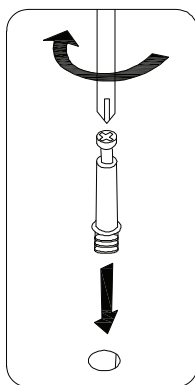


2

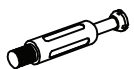
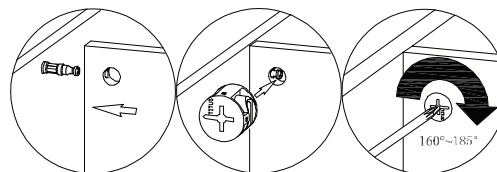
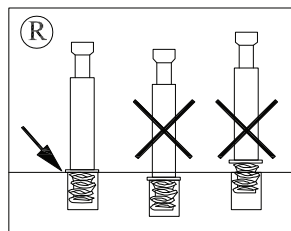
Screw Lag Bolts to Cabinet Top and insert Dowels.



Lag Bolt & Nut Protip



Use a screwdriver to tighten Lag Bolt until shoulder is flush with panel. Do not overtighten or under tighten. Lag Nut is inserted on the reverse side of the board. Insert the Lag Nut and tighten with a screwdriver.

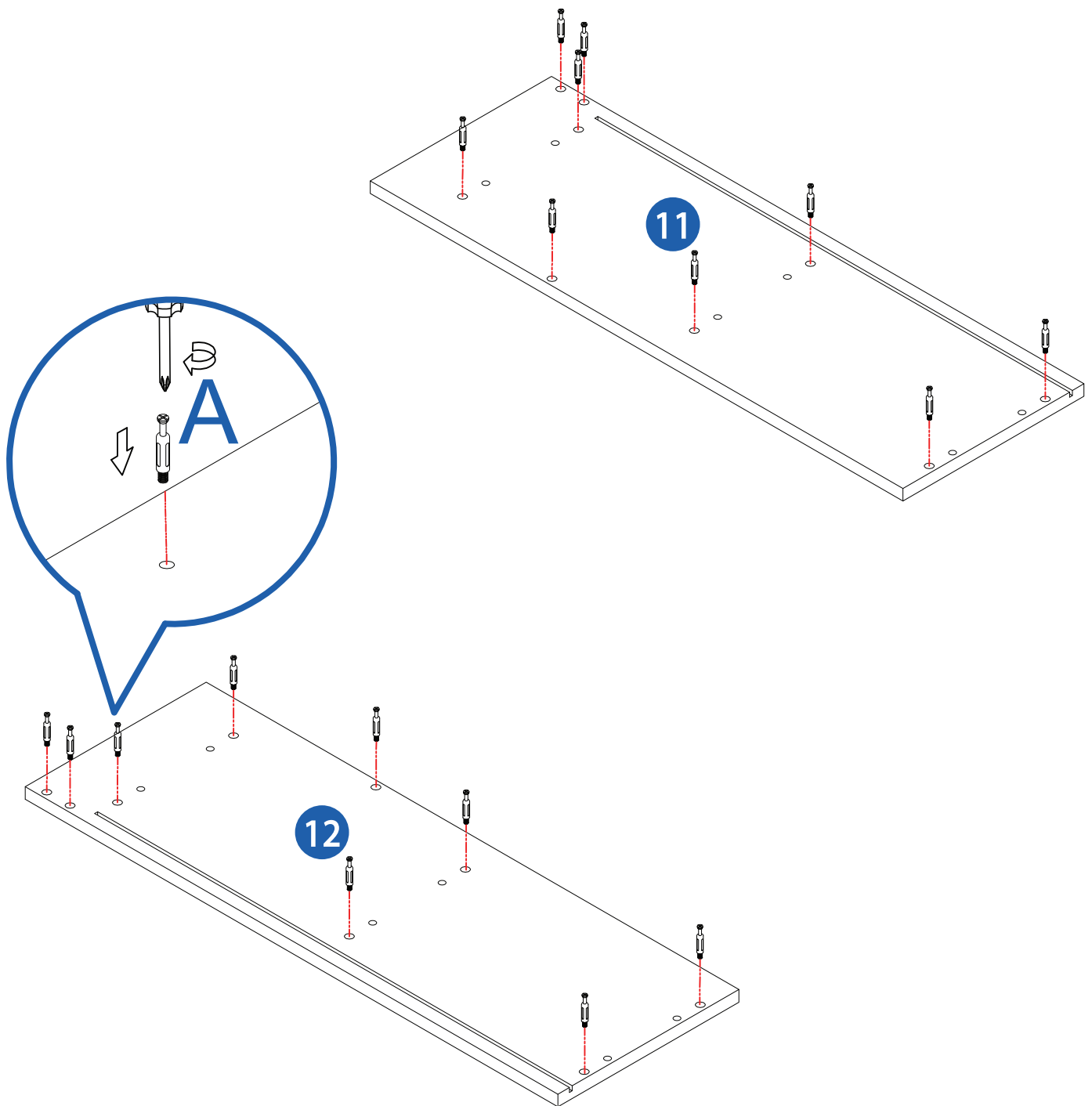


A*6



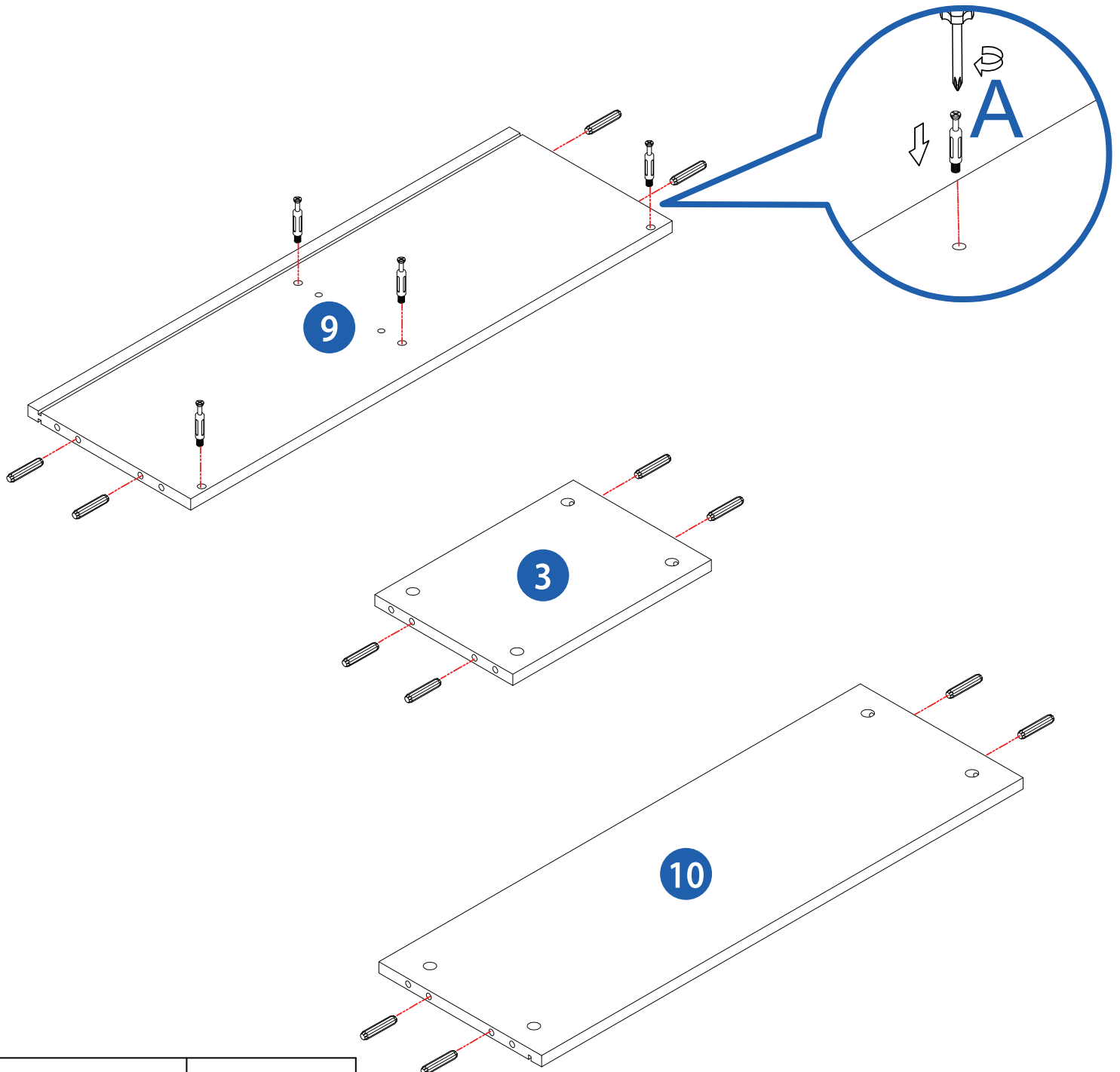
C*4

Screw Lag Bolts to Left and Right Cabinet Walls.



A*18

Screw Lag Bolts to Cabinet Base, Cabinet Divider and Bottom Shelf.
Insert Dowels.

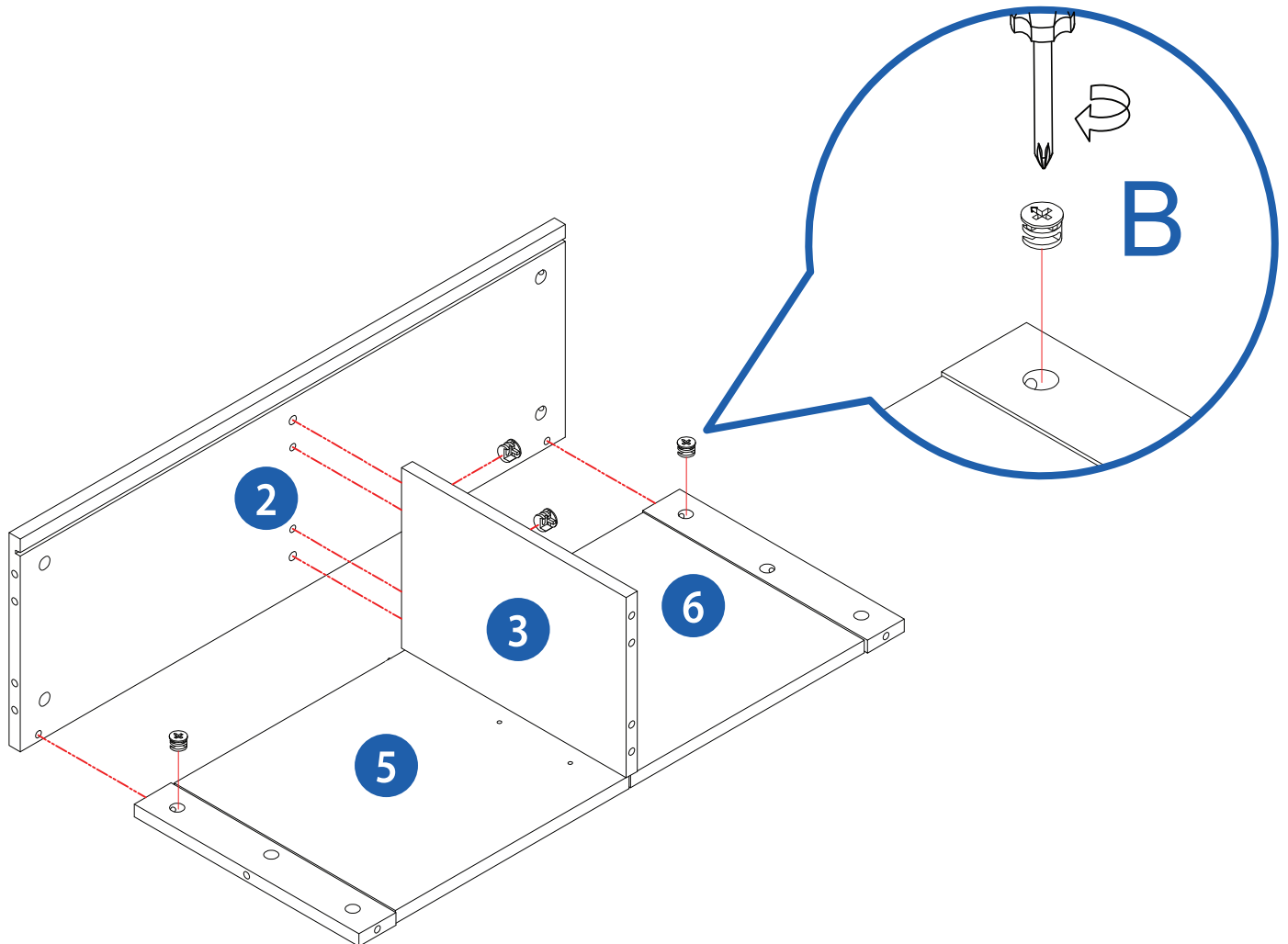


A*4



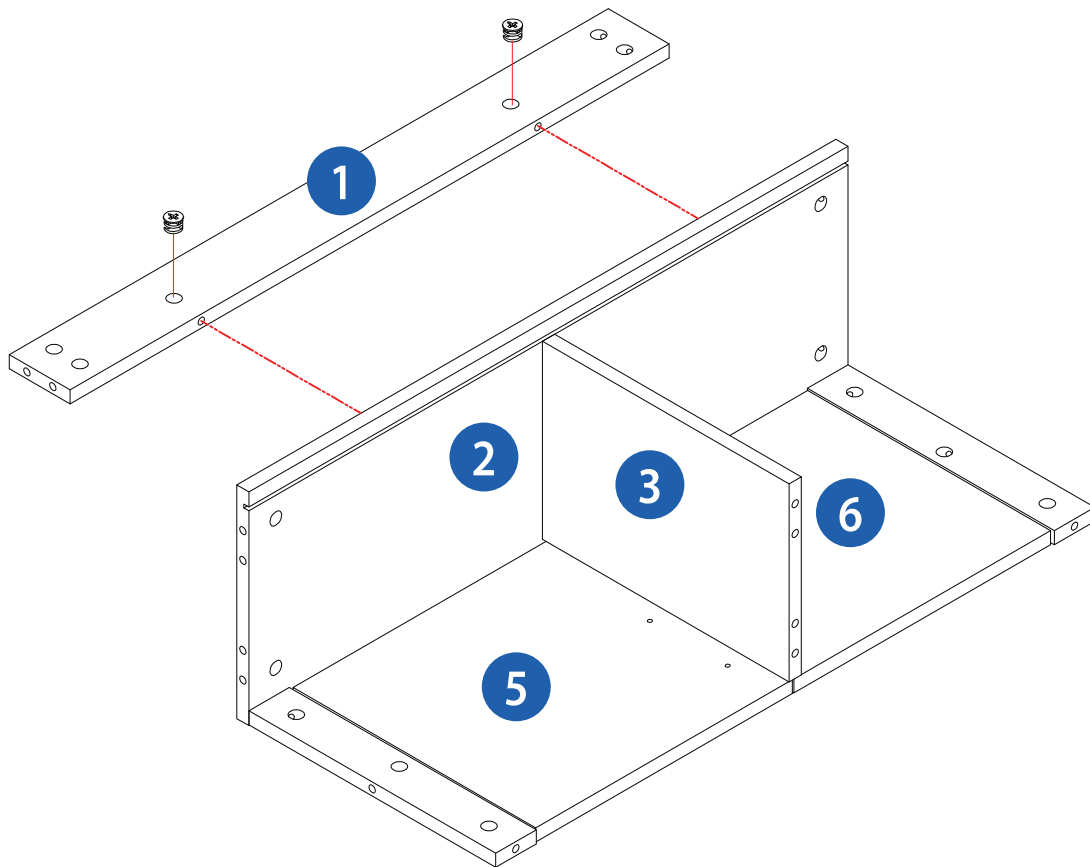
C*12

Connect Cabinet Top, Cabinet Divider and Left Door and Right Door together. Be sure to face the front of the doors outward. Insert and tighten Lag Nuts.



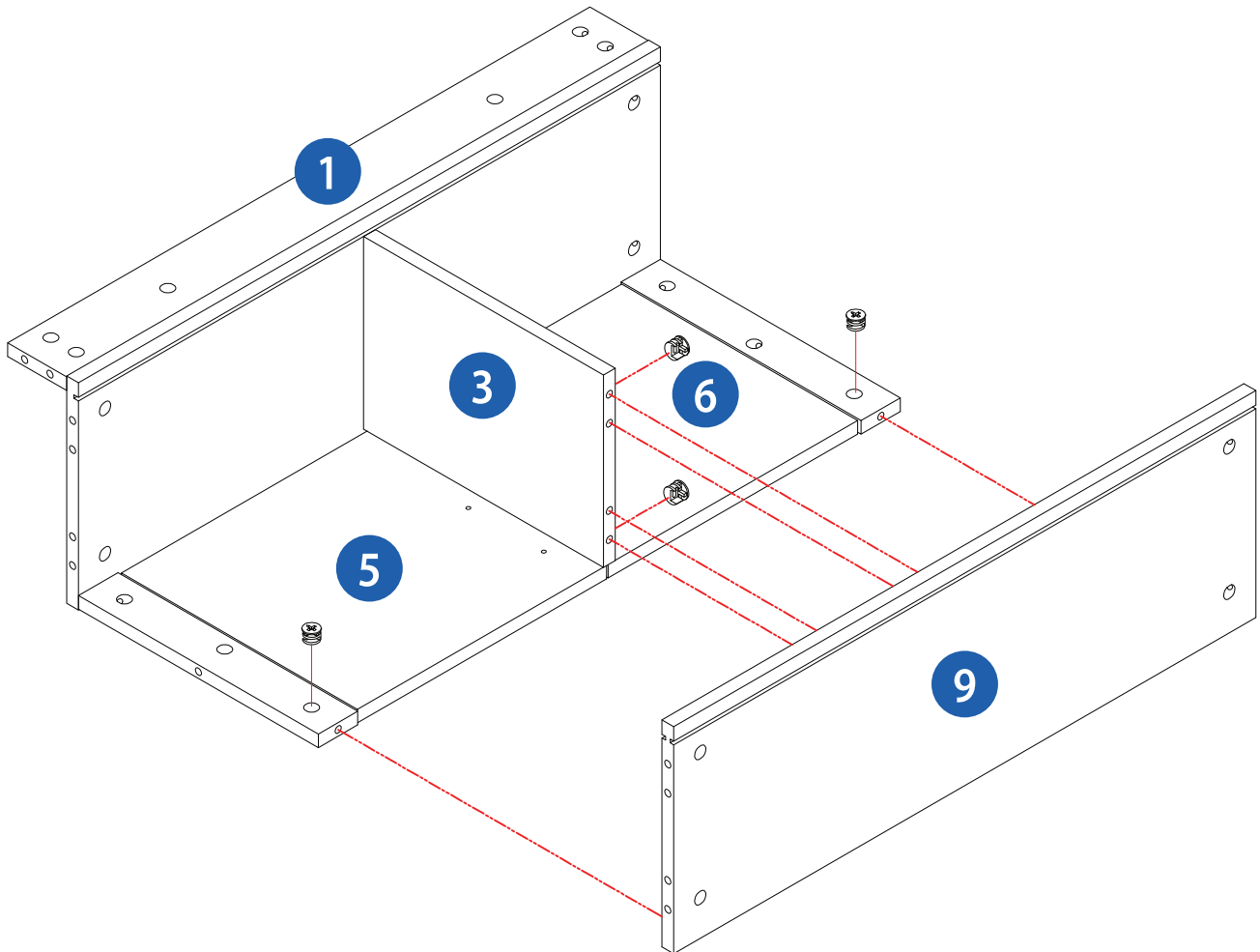
B*4

Connect Top Slat to the Cabinet Top using the Lag Nuts.



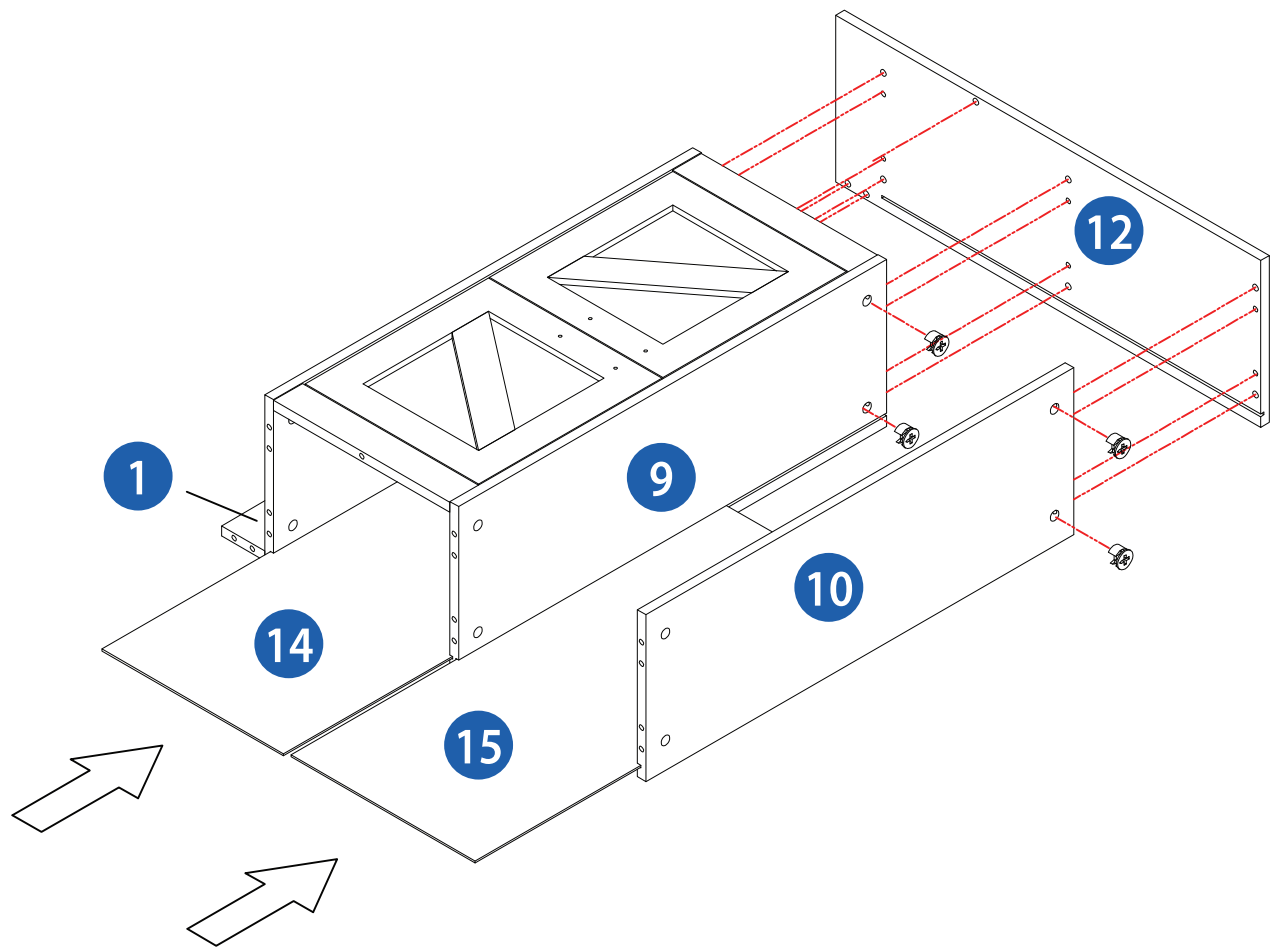
B*2

Connect the Cabinet Base using the Lag Nuts.



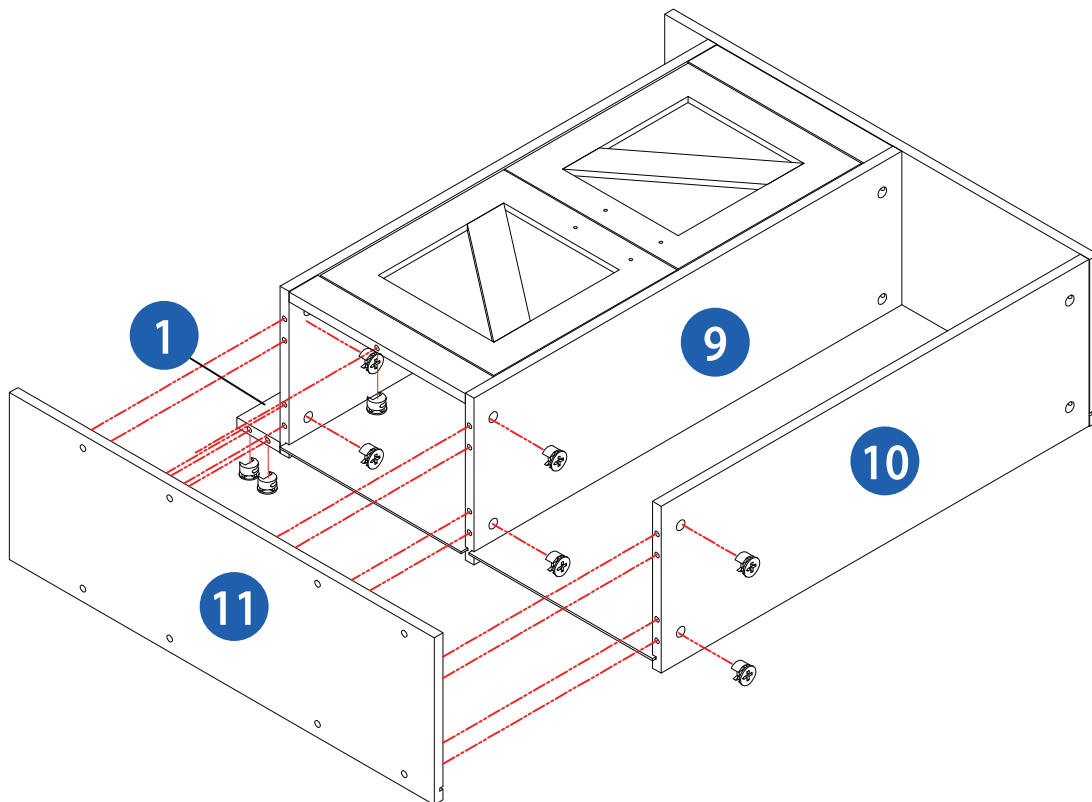
B*4

Attach the Right Cabinet Wall and slide the Cabinet Back Wall and Shelf Back Wall in using the groove cut outs as a guide.



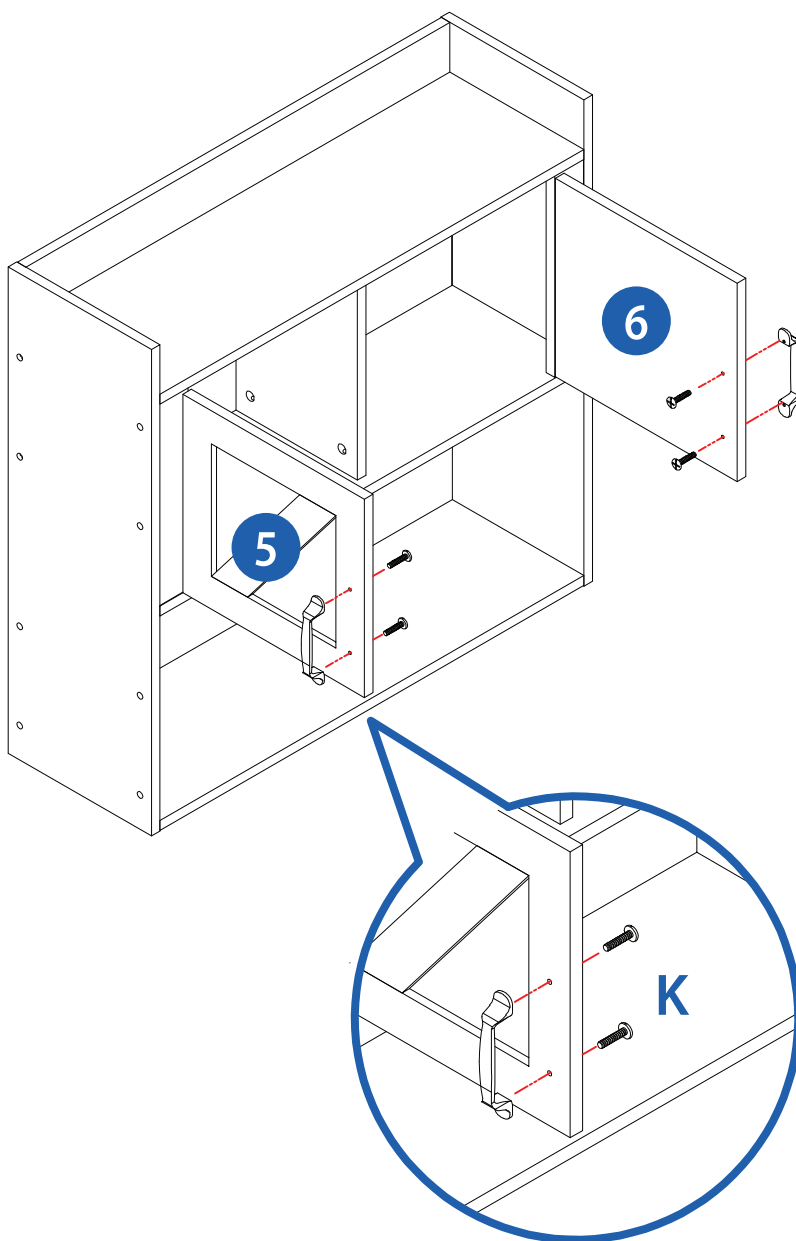
B*9

Attach the Left Cabinet Wall and complete with Lag Nuts.



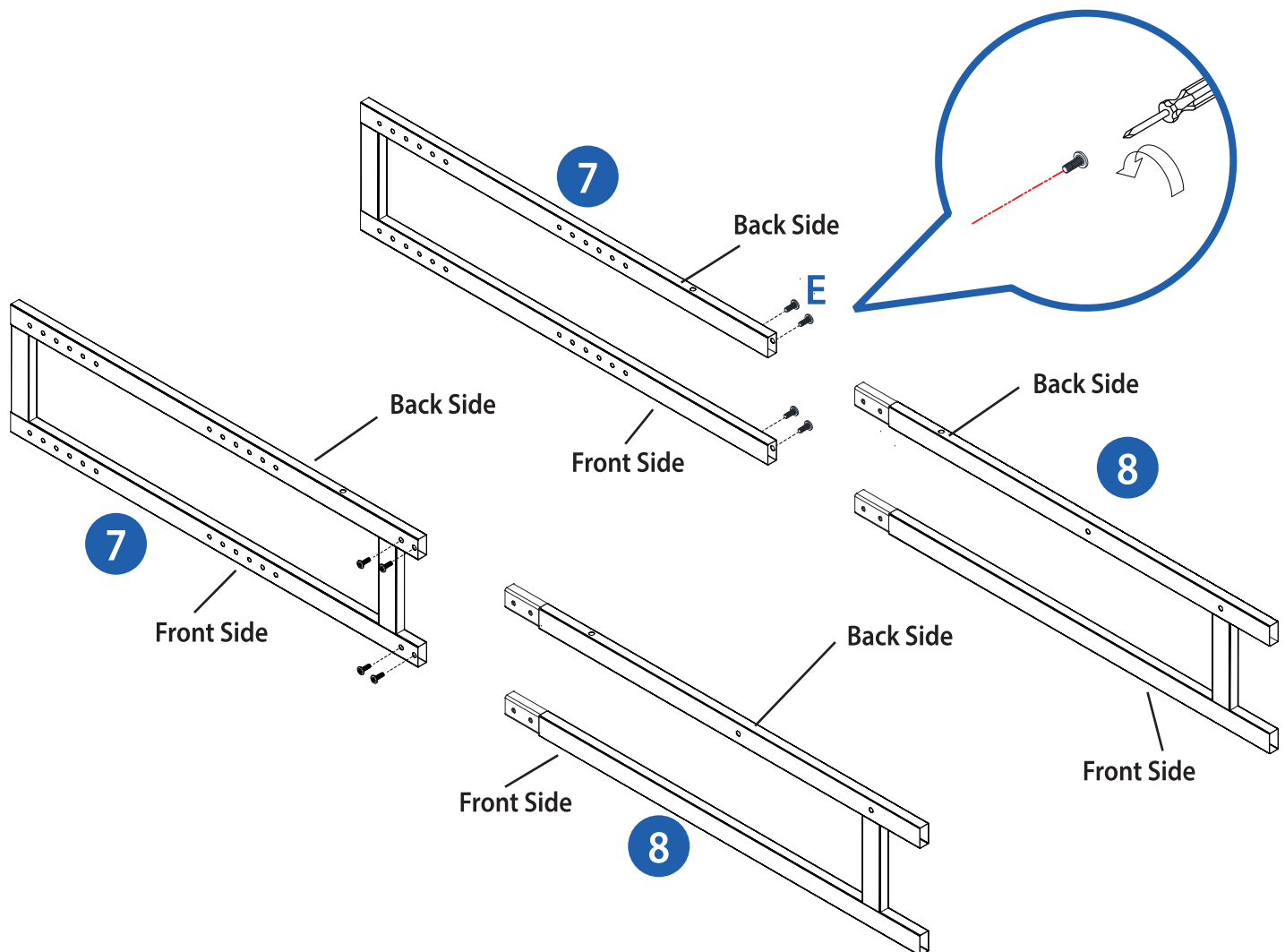
B*9

Add the Handles and Screws to the doors.



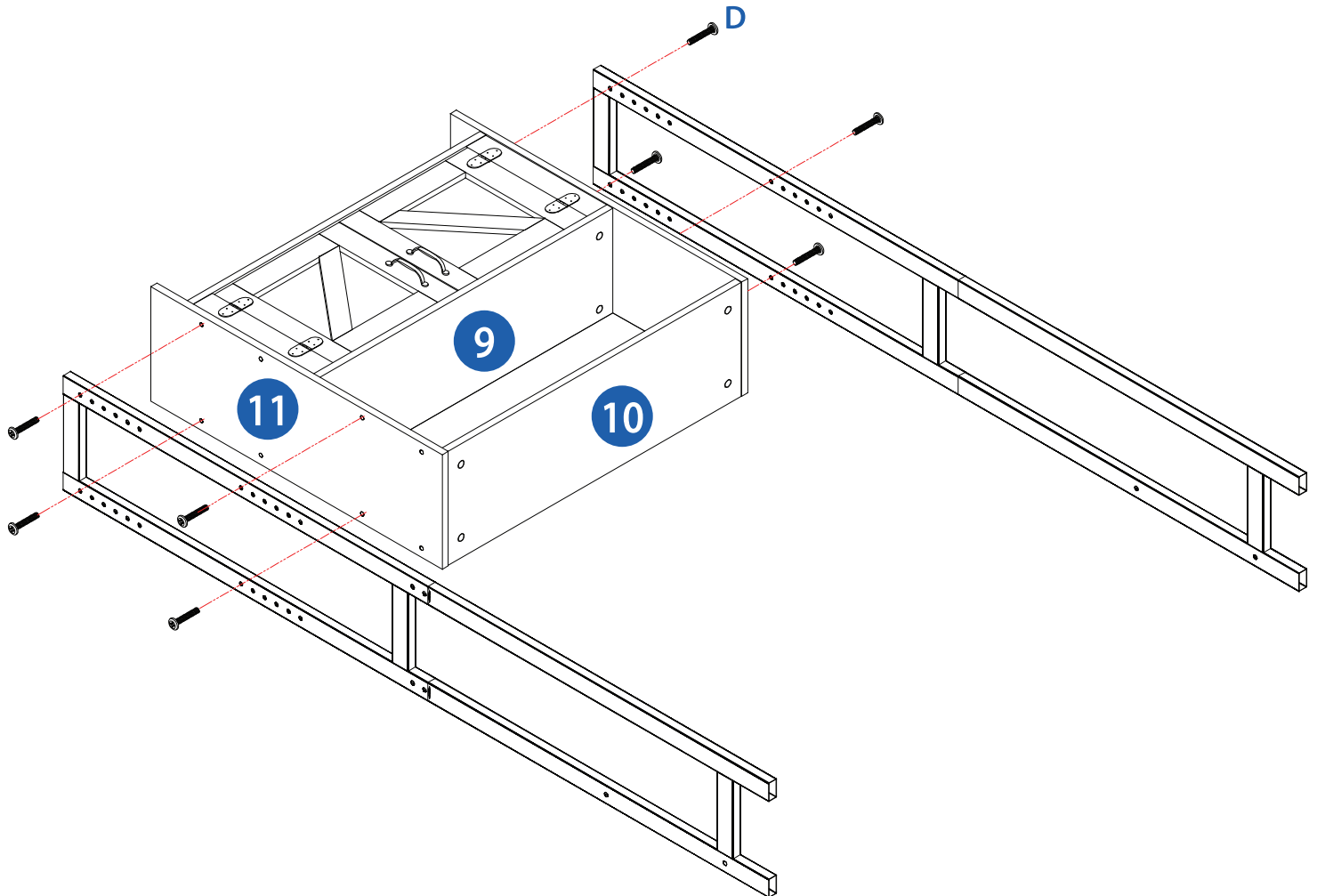
K*2

Assemble the side rails by connecting the Top Rail Frame and Bottom Rail Frame together.
Make sure the back side is lined up when connecting the top and bottom rails.



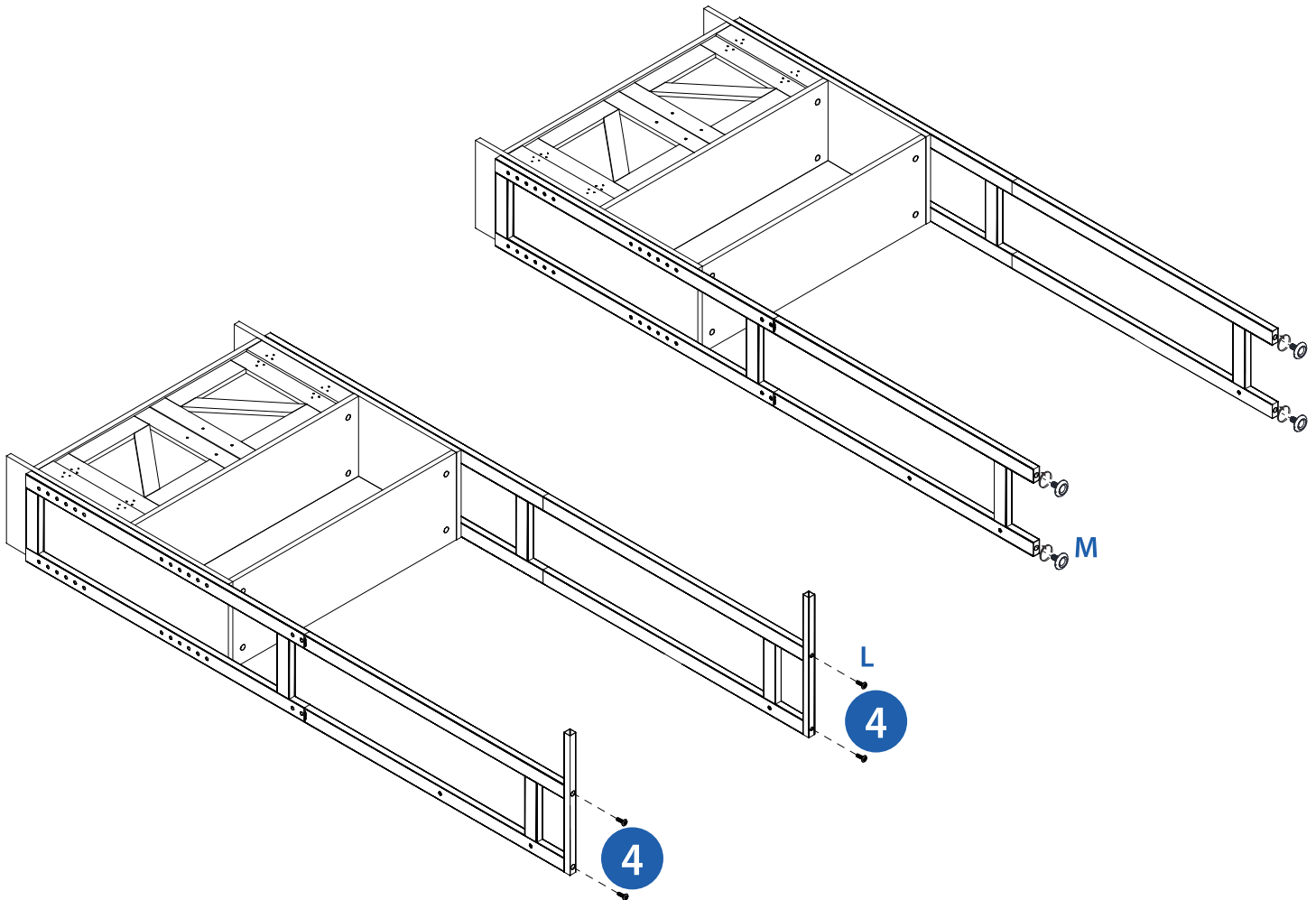
E*8

Attach Cabinet to Side Rail Frame. First determine the desired height of the cabinet. There are six options. Screw the side rails to the cabinet.



D*8

Attach the Leg Support Bars to the bottom of the side rails. Optional: If you would like to create height adjustable foot, apply the optional footing instead.

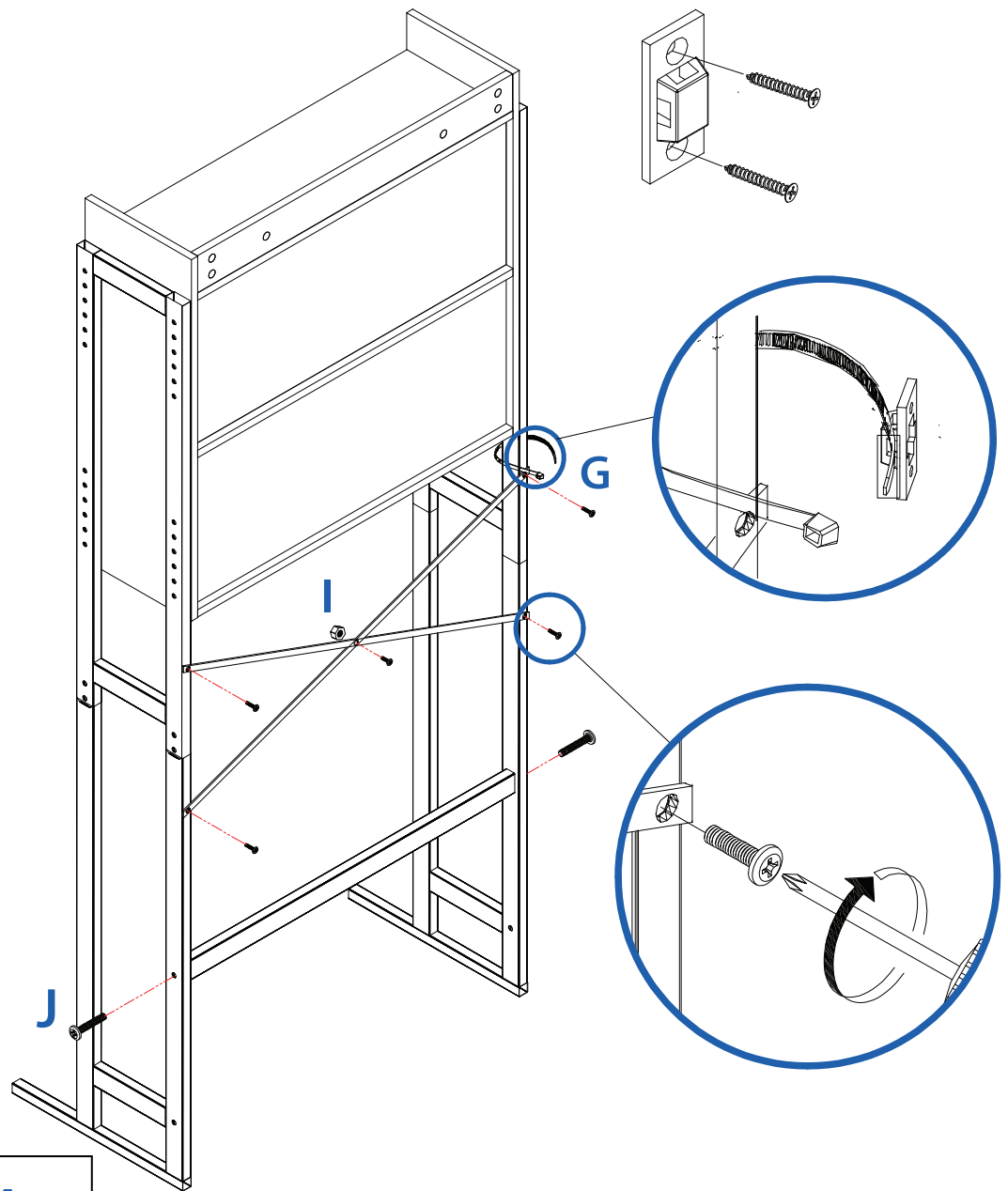



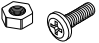
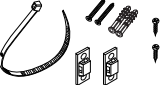

M*4



L*4

Once the completed Over The Washer Cabinet is complete and placed in your home, attach the Anti-Slip Kit, Support Cross Bars and Bottom Support Rail.

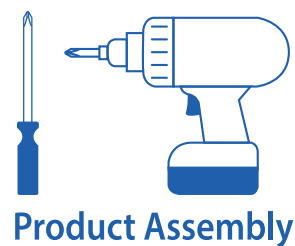


	G*4
	I*1
	N*2
	J*2

STEPHAN ROBERTS
• HOME COLLECTION •

Help Center

Thank you for purchasing our product.
Our team is available to answer any questions or concerns.
You can reach us at orders@kittrich.com.



WARNING

Manufacturer and seller expressly disclaim any and all liability for personal injury, property damage or loss, whether direct, indirect, or incidental, resulting from the incorrect attachment, improper use, inadequate maintenance, unapproved modification, or neglect of this product.