



S E R V I C E I N S T R U C T I O N S

P o r t a b l e N u g g e t I c e D i s p e n s e r

FDFM1JA02



Contact customer service at 800-433-9938 or info@fluridaappliances.com.

TROUBLESHOOTING CHART

Complaint	Possible Causes	Response
Power LED is not lit	<ul style="list-style-type: none"> a. There is no power at outlet. b. Power cord is unplugged. c. Power cord is broken. d. Control PCB is defective or with wiring problems. e. Display PCB is defective or with wiring problems. 	<ul style="list-style-type: none"> a. Check for outlet and breaker/fuse. b. Plug in the power cord. c. Call for service. d. Call for service. e. Call for service.
Unit does not make ice	<ul style="list-style-type: none"> a. The ice maker is turned off. b. Clearances are too small. c. Ambient temperature is too high. d. Add Water LED illuminates and the water reservoir is low. e. Unit doesn't start making ice but it has dispensed all ice. f. Cleaning LED flashes quickly. g. All LEDs illuminate simultaneously. h. The water pump, water level sensor, ice engine motor or cooling system is defective. 	<ul style="list-style-type: none"> a. Press Make Ice button once to start. b. Check the clearance requirements. c. Check the location requirements. d. Fill the water reservoir with clean potable water. e. Press and hold the Dispense button for more than 10 seconds to restart making ice. f. Press and hold the Clean button for more than 3 seconds to start defrosting. g. Drain the unit and plug the unit into power, otherwise call for service. h. Call for service.
Unit does not dispense ice	<ul style="list-style-type: none"> a. There is no ice in the ice bin. b. Ice is jammed in the ice bin. c. Ice is jammed in the ice dispense point d. The ice bin auger or motor, control PCB or display PCB is defective. 	<ul style="list-style-type: none"> a. See Unit does not make ice above b. Use Dispense and Clean button combination to break the jammed ice. c. Use a spoon to remove the jammed ice. d. Call for service.
Unit leaks water	<ul style="list-style-type: none"> a. The water reservoir is overfull. b. The drip tray is overflow. c. The water reservoir or tubing is broken. d. The water level sensor is defective. 	<ul style="list-style-type: none"> a. Don't overfill the reservoir. b. Empty it. c. Call for service. d. Call for service.

UNIT CARE

How to drain water

- Unplug the unit.
- Unhook the plug/holder with drain tubes out of the unit back and lower them to a bucket or sink.
- Press and hold the release buttons on the connectors to disconnect the plug/holder and release water.
- Reconnect and hook them back to the unit.

How to empty the ice bin and water reservoir

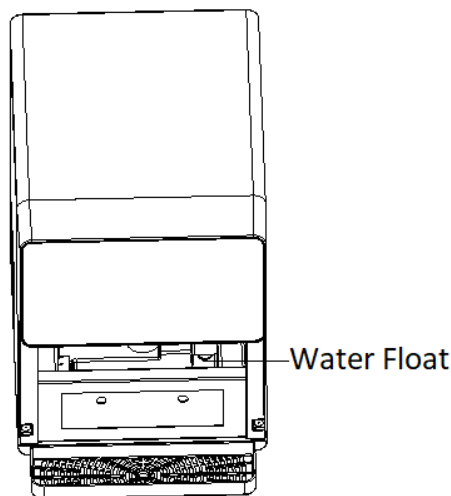
- Dispense ice until no more ice comes out of the ice dispense point.
- Drain water following instructions above.

1-If the Add Water LED illuminates and the unit stops making ice

- Fill the water reservoir with clean potable water.

2-If the Add Water LED doesn't go off when water is filled to MAX WATER FILL

- Touch the water float as shown and move it upward to resettle. If it works, you can skip the following steps.
- Unplug the unit.
- Fill the water reservoir with 12 teaspoons of food grade citric acid powder.
- Wait for a few hours and plug the unit into power again.



3-If Clean LED flashes quickly and the unit stops making ice (If this section can't solve your problem, please go to section 8 or check your installation clearances and ambient temperature)

- Empty the ice bin and water reservoir following instructions in Section 2.
- Fill the water reservoir with clean potable water to MAX WATER FILL.
- Plug the unit into power. Add Water LED will flash quickly with 5 beeps if the water reservoir is full.
- Press and hold the Clean button for 3 seconds to start cleaning for defrosting process. The Cleaning LED will illuminate (it takes 30 minutes to complete and the Cleaning LED goes off).
- Press the Make Ice button once to start making ice.

4-If all LEDs illuminate simultaneously and water is filled to MAX WATER FILL

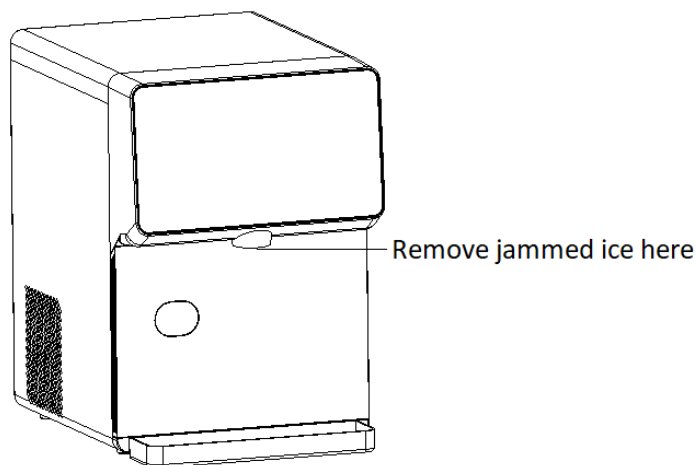
- Drain water following instructions in Section 1.
- Fill the water reservoir with clean potable water to MAX WATER FILL.
- Plug the unit into power again. Add Water LED will flash quickly with 5 beeps if the water reservoir is full.
- Disconnect the UR tube connector for 5 seconds to release air and reconnect it again.

5-If the unit doesn't start making ice but it has dispensed all ice

- Press and hold the Dispense button for more than 30 seconds to restart making ice.

6-If ice is jammed at the dispense point and the unit can't dispense ice

- Remove the jammed ice in the dispense point with a teaspoon.
- Or break the jammed ice by pressing the Clean button while you hold the Dispense button.
- Then press and hold the Dispense button to dispense ice.



7-How to flush the unit with clean potable water once a week to prevent high water TDS and hardness

- Empty the ice bin and water reservoir following instructions in Section 2.
- Fill the water reservoir with clean potable water to MAX WATER FILL.
- Plug the unit into power. Add Water LED will flash quickly with 5 beeps if the water reservoir is full.
- Press and hold the Clean button for 3 seconds to start cleaning for flushing process. The Cleaning LED will illuminate (it takes 30 minutes to complete and the Cleaning LED goes off).
- Drain water following instructions in Section 1.

8-How to descale the unit with citric acid once a month to prevent sediment buildup

- Empty the ice bin and water reservoir following instructions in Section 2.
- Fill the water reservoir with 12 teaspoons of food grade citric acid powder.
- Fill the water reservoir with clean potable water to MAX WATER FILL.
- Mix them well.
- Plug the unit into power. Add Water LED will flash quickly with 5 beeps if the water reservoir is full.
- Press and hold the Clean button for 3 seconds to start cleaning for descaling process. The Cleaning LED will illuminate (it takes 30 minutes to complete and the Cleaning LED goes off).
- Drain water following instructions in Section 1.
- Fill the water reservoir with clean potable water to MAX WATER FILL.
- Plug the unit into power. Add Water LED will flash quickly with 5 beeps if the water reservoir is full.
- Press and hold the Clean button for 3 seconds to start cleaning for rinse process. The Cleaning LED will illuminate. Press and hold the Clean button again for 3 seconds in 5 minutes to stop rinsing.
- Drain water following instructions in Section 1.
- Repeat the rinse process 2~3 times.

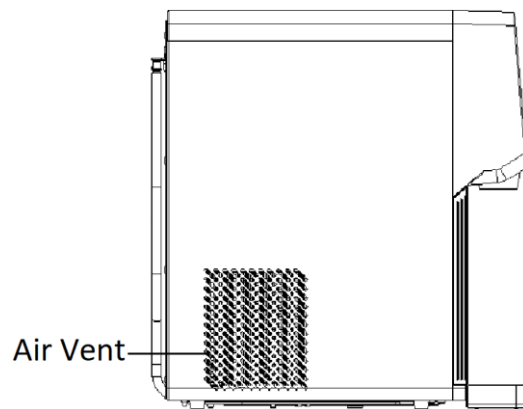
9-How to sanitize the unit with chlorine bleach once a month to prevent bacteria growth

- Empty the ice bin and water reservoir following instructions in Section 2.
- Fill the water reservoir with 1 teaspoon of 5% food grade chlorine bleach.
- Fill the water reservoir with clean potable water to MAX WATER FILL.
- Mix them well.
- Plug the unit into power. Add Water LED will flash quickly with 5 beeps if the water reservoir is full.
- Press and hold the Clean button for 3 seconds to start cleaning for sanitizing process. The Cleaning LED will illuminate (it takes 30 minutes to complete and the Cleaning LED goes off).

- Drain water following instructions in Section 1.
- Fill the water reservoir with clean potable water to MAX WATER FILL.
- Plug the unit into power. Add Water LED will flash quickly with 5 beeps if the water reservoir is full.
- Press and hold the Clean button for 3 seconds to start cleaning for rinse process. The Cleaning LED will illuminate. Press and hold the Clean button again for 3 seconds in 5 minutes to stop rinsing.
- Drain water following instructions in Section 1.
- Repeat the rinse process 2~3 times.

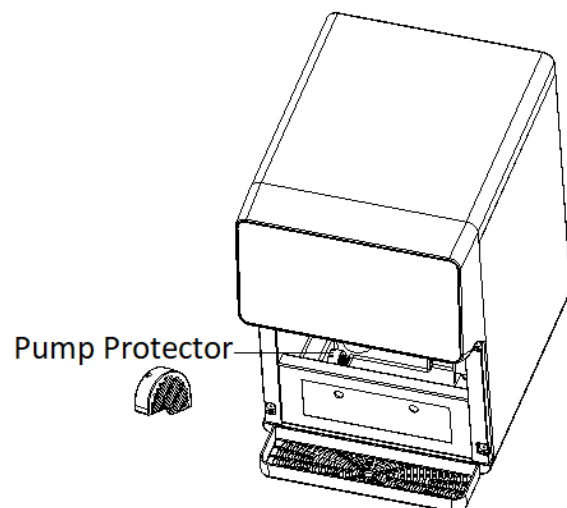
10-How to clean the air vent every 3 months to prevent condenser from blocking

- Unplug the unit.
- Use a condenser brush or a vacuum cleaner with an extended attachment to clean the air vent.
- Plug the unit into power.

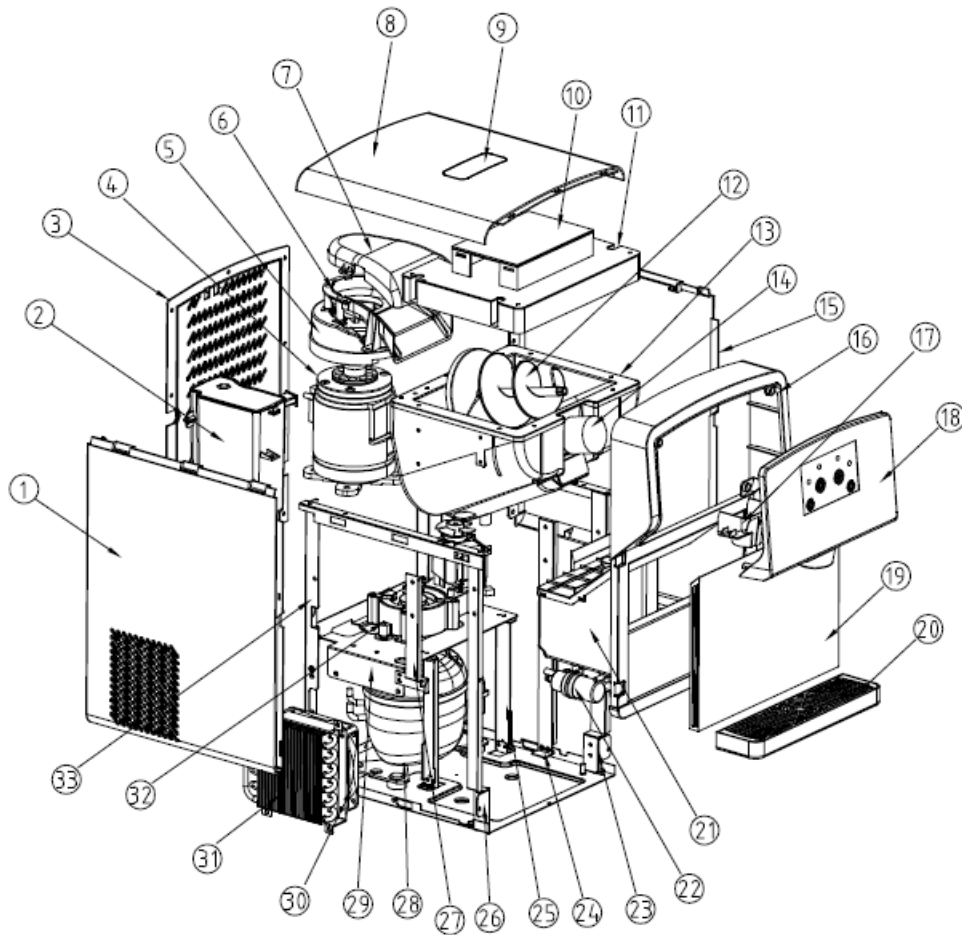


11-Cleaning the pump protector when it is dirty

- Drain water following instructions in Section 1.
- Remove the water reservoir door and lift up the pump protector.
- Clean the pump protector with dishwashing liquid and rinse it with potable water.
- Replace the pump protector and press it down.



PARTS & DESCRIPTIONS



34	8201000186	Vertical Bracket, Right
33	8201000187	Vertical Bracket, Left
32	8205000158	Ice Engine Motor
31	8204000065	Condenser
30	8105000009	Condenser Fan
29	8201000189	Motor Plate
28	8204000064	Compressor Assy
27	8201000191	Bin Bracket, Left Rear
26	8201000190	Bin Bracket, Left Front
25	8201000188	Motor Plate Bracket
24	8201000193	Bin Bracket, Right Rear

23	8201000192	Bin Bracket, Right Front
22	8205000164	Water Pump
21	/	Lower Reservoir Assy
20	8202000204	Drip Tray Assy
19	8202000203	Reservoir Door
18	8202000211	Display Panel
17	8202000206	Ice Dispense
16	8202000202	Housing
15	8202000201	Right Panel
14	8205000163	Ice Bin Motor
13	/	Ice Bin Assy
12	8202000191	Ice Bin Auger
11	8202000190	Ice Bin Lid Assy
10	8202000185	Cover, Control Box
9	8202000199	Ice Window
8	8202000198	Top Panel
7	8202000182	Cover, Ice Engine Chute
6	8202000182	Ice Engine Chute
5	8208000063	Extruder Insulation, EPS
4	/	Ice Engine Assy
3	8202000207	Back Panel
2	/	Upper Reservoir Assy
1	8202000200	Left Panel
ITEM NO	PART NO	DESCRIPTION

DIAGNOSIS INSTRUCTIONS

1-Appearance

Inspect damages or defects on the display panel, housing, door, back, left, right, top and drip tray.



2-Mechanical

Inspect damages or deformations on the left and right brackets, horizontal and vertical brackets, and feet.

3-Electrical

Inspect damages or defects on the power cord, pump wires and control box.

4-Waterway

Inspect cracks , connections or zip ties on the water tubes, upper reservoir, lower reservoir, pump protector, drain tubes and drain plugs.

5-Refrigeration

Inspect damages, kinks or leaks on the compressor electrical box and mounting, refrigerant tubing and insulations.

6-Engine

Inspect damages on the ice chute, cover and foams.

7-Testing

- Fill water into the water reservoir to MAX FILL.
- Plug the unit into power. Add Water LED flashes and goes off.
- Press Make Ice once to start making ice.
- You hear pump running and water dripping. You hear engine motor running and making noise.
- You hear fan running. Warm air exhausts at the back and the right side gets warm.
- Wait for 30 minutes and then dispense all ice. Fill water to MAX FILL, wait for 1 hour and then press and hold Make Ice to stop making ice. Dispense all ice and weight it.

8-Issues

- Water leaks from the unit.
- Add Water LED doesn't flash when the water reservoir is full.
- All LED illuminate simultaneously when the water reservoir is full.
- The right side doesn't get warm.
- The unit doesn't make ice and the Cleaning LED flashes.
- The engine or motor makes clicking, clunking, slipping, grinding, squealing, squeezing, or high pitch noise.

9-Causes

- Upper water reservoir is damaged
- Lower water float is defective.
- Water pump is defective.
- The sealed system is defective.
- Engine motor or auger is defective.

REPAIR INSTRUCTIONS



Remove 10 self-tapping screws on the back panel.
Remove the back panel.



Pop the top panel off.

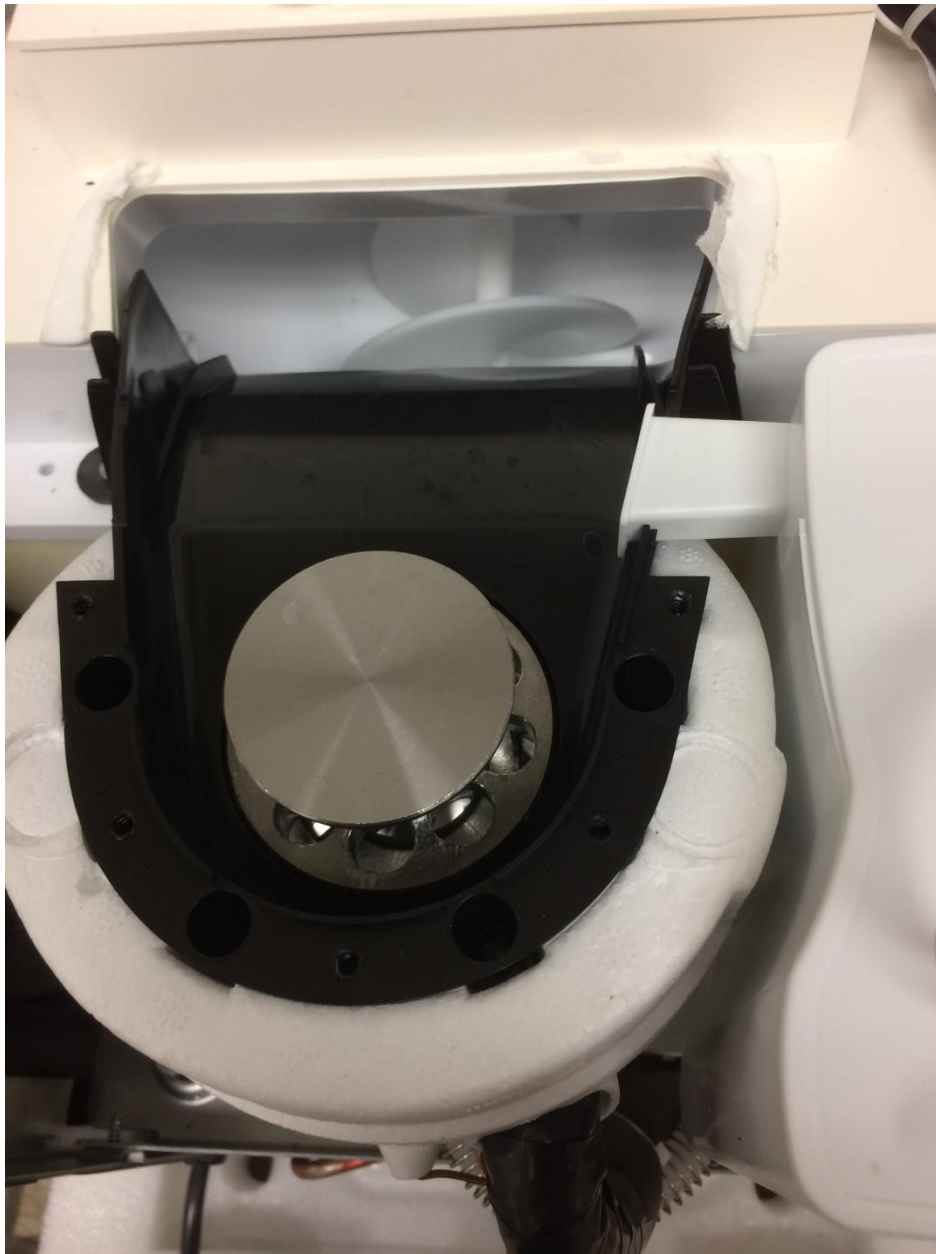


Remove 4 machine screws on the top left & right sides.
Pull the left & right panels backwards to remove them.





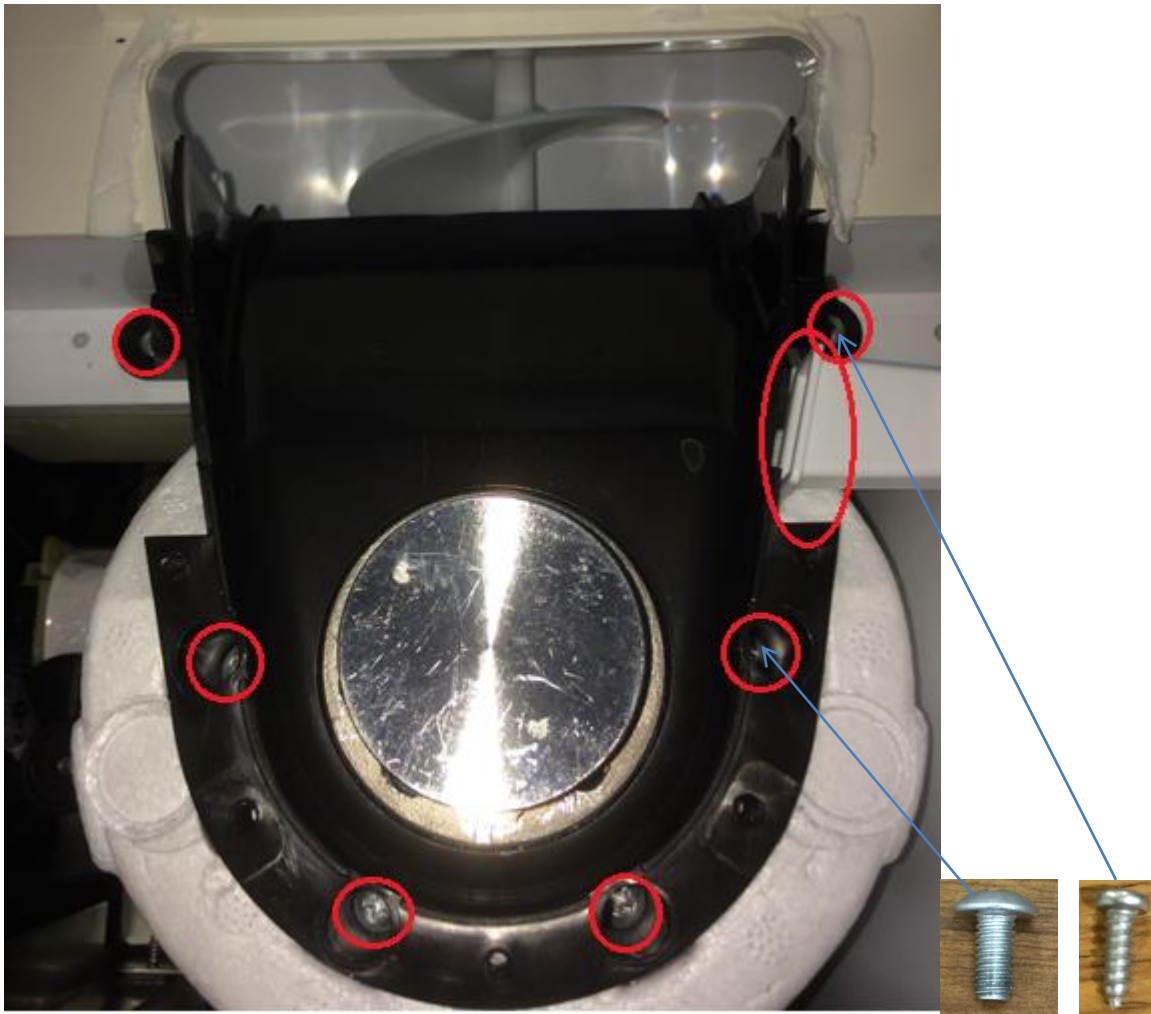
Remove 5 self-tapping screws on the cover.
Remove the cover.



The cover has been removed.



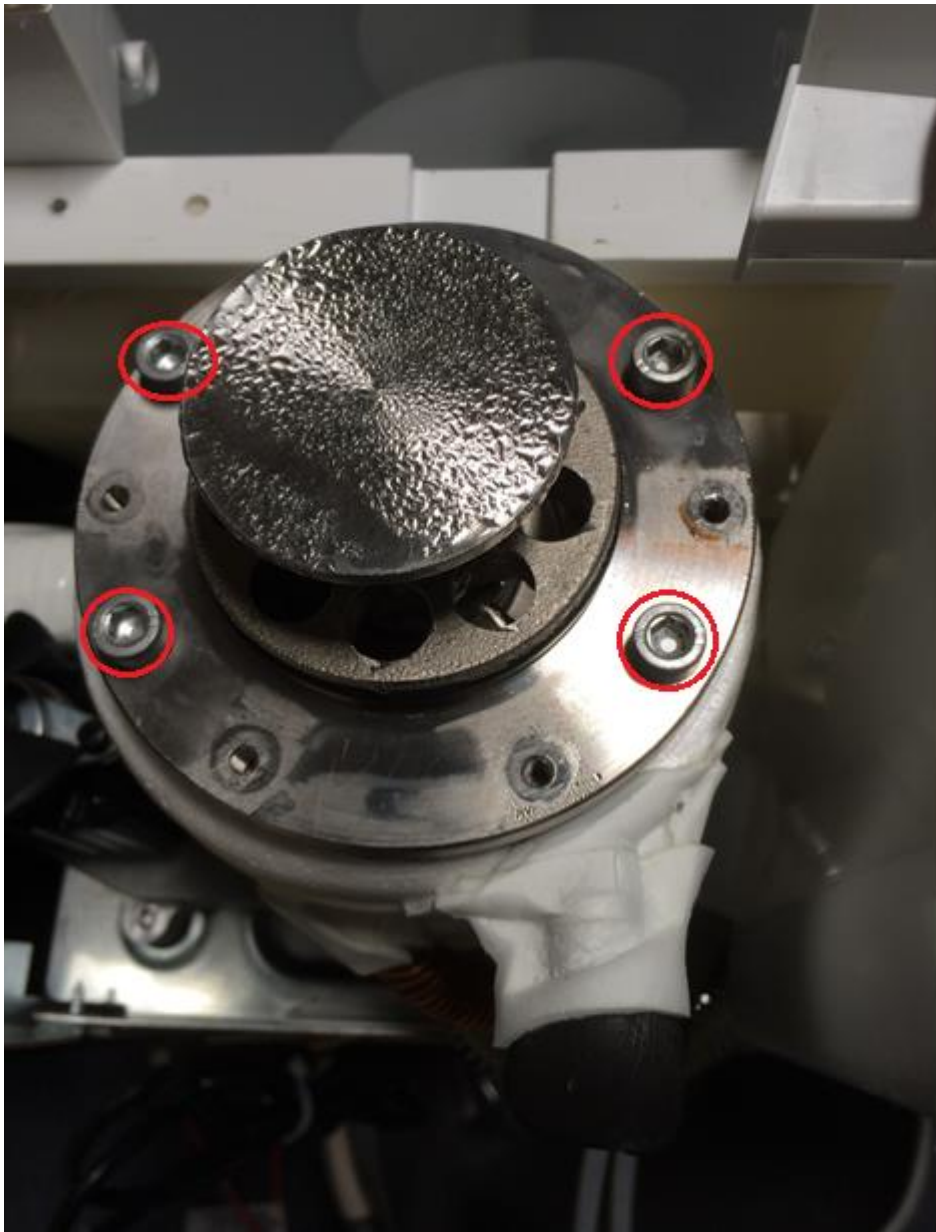
Remove 3 self-tapping screws on the reservoir.



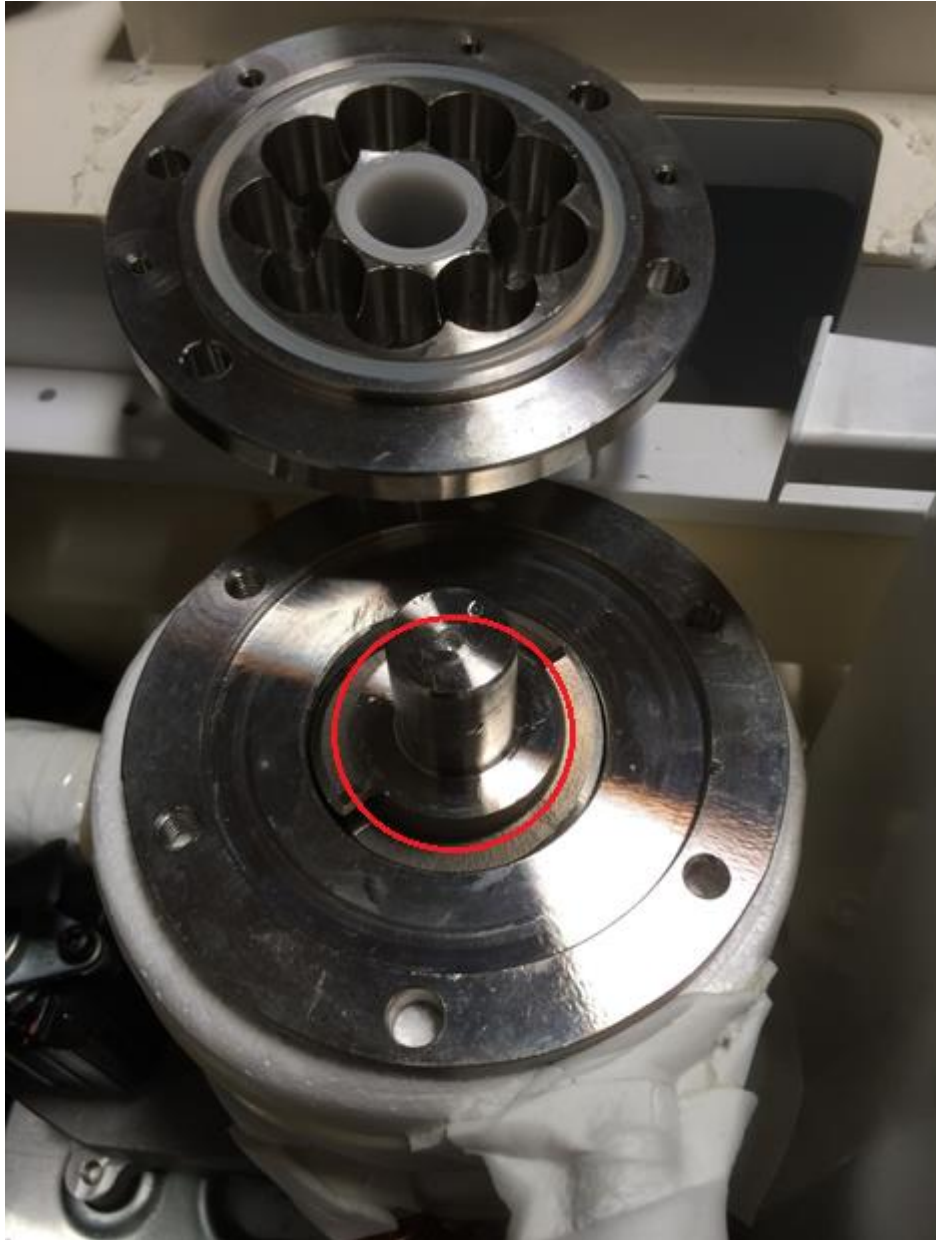
Remove 4 machine screws and 2 self-tapping screws on the chute.
Remove the chute.



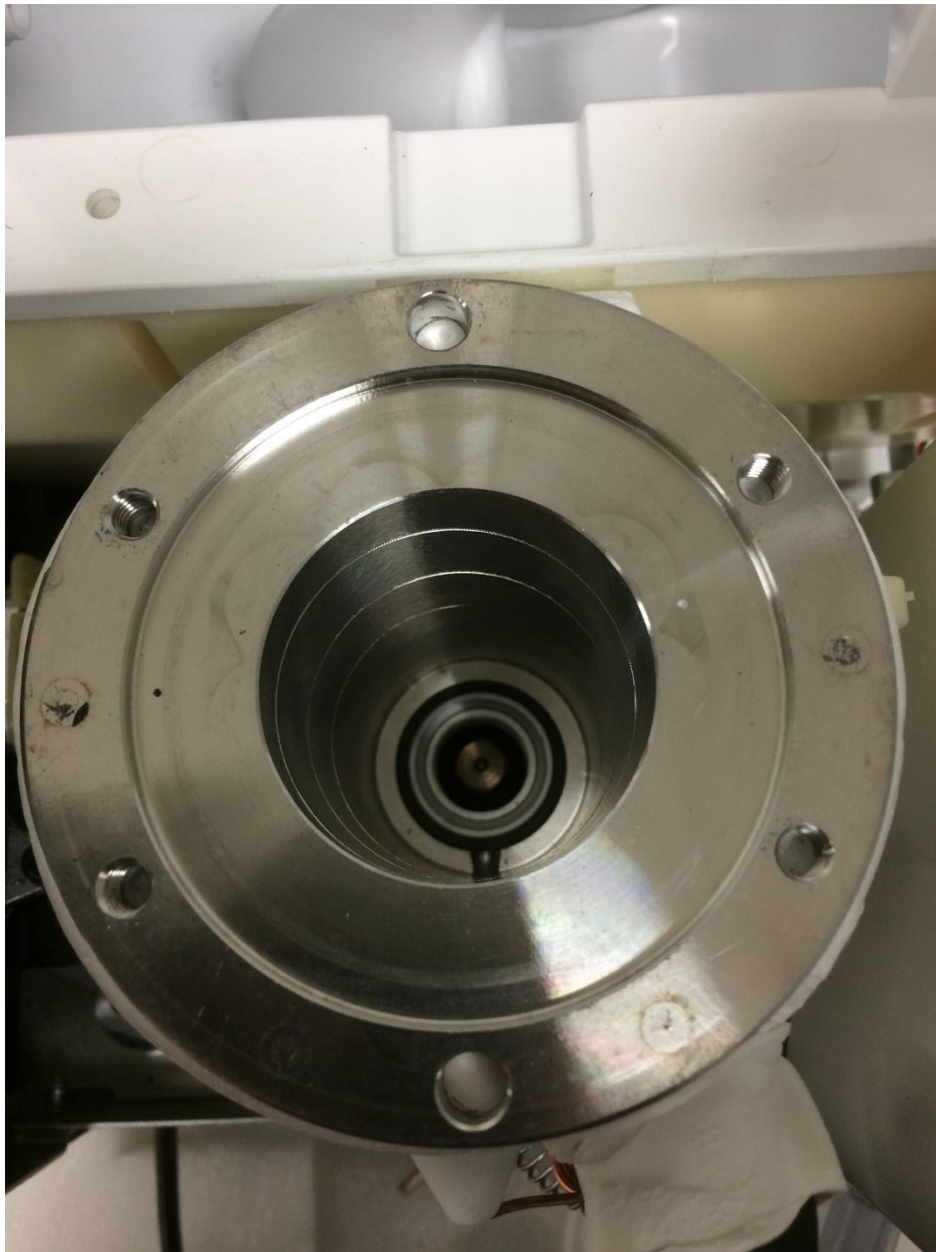
Remove the foam.



Remove 4 bolts on the extruder.
Remove the extruder.



Remove the auger.



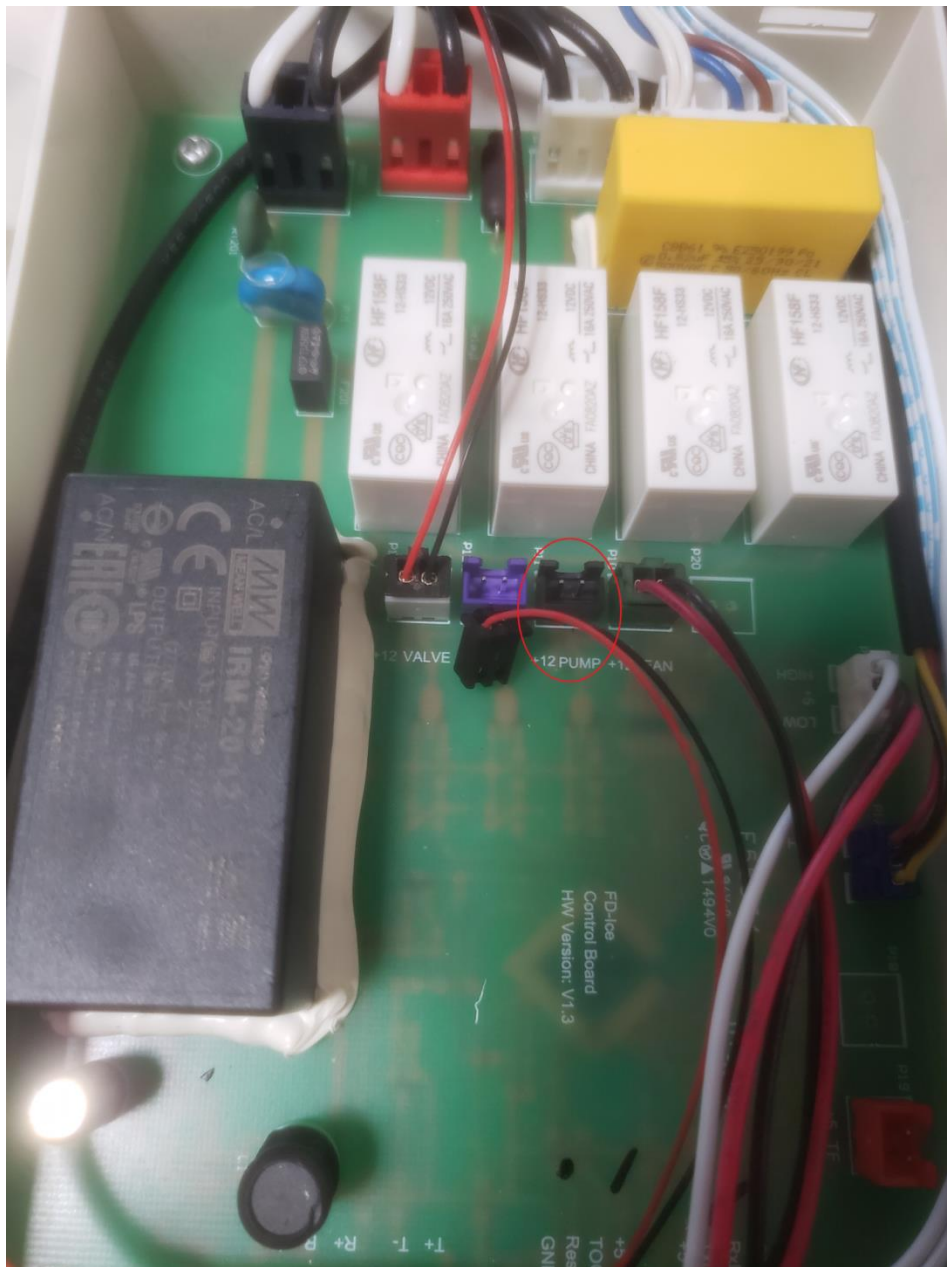
The auger has been removed.



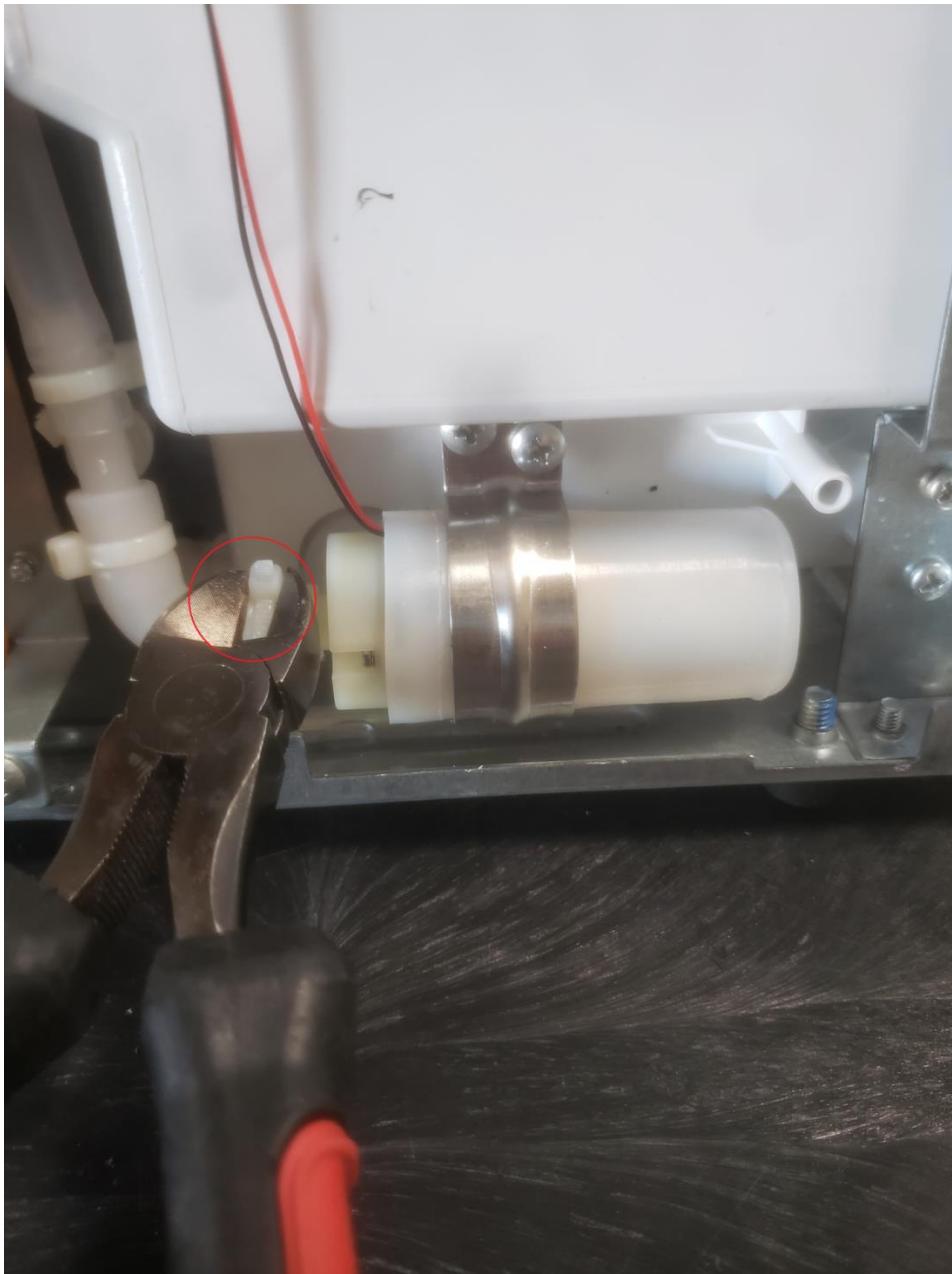
Check if any items are left inside the bin.



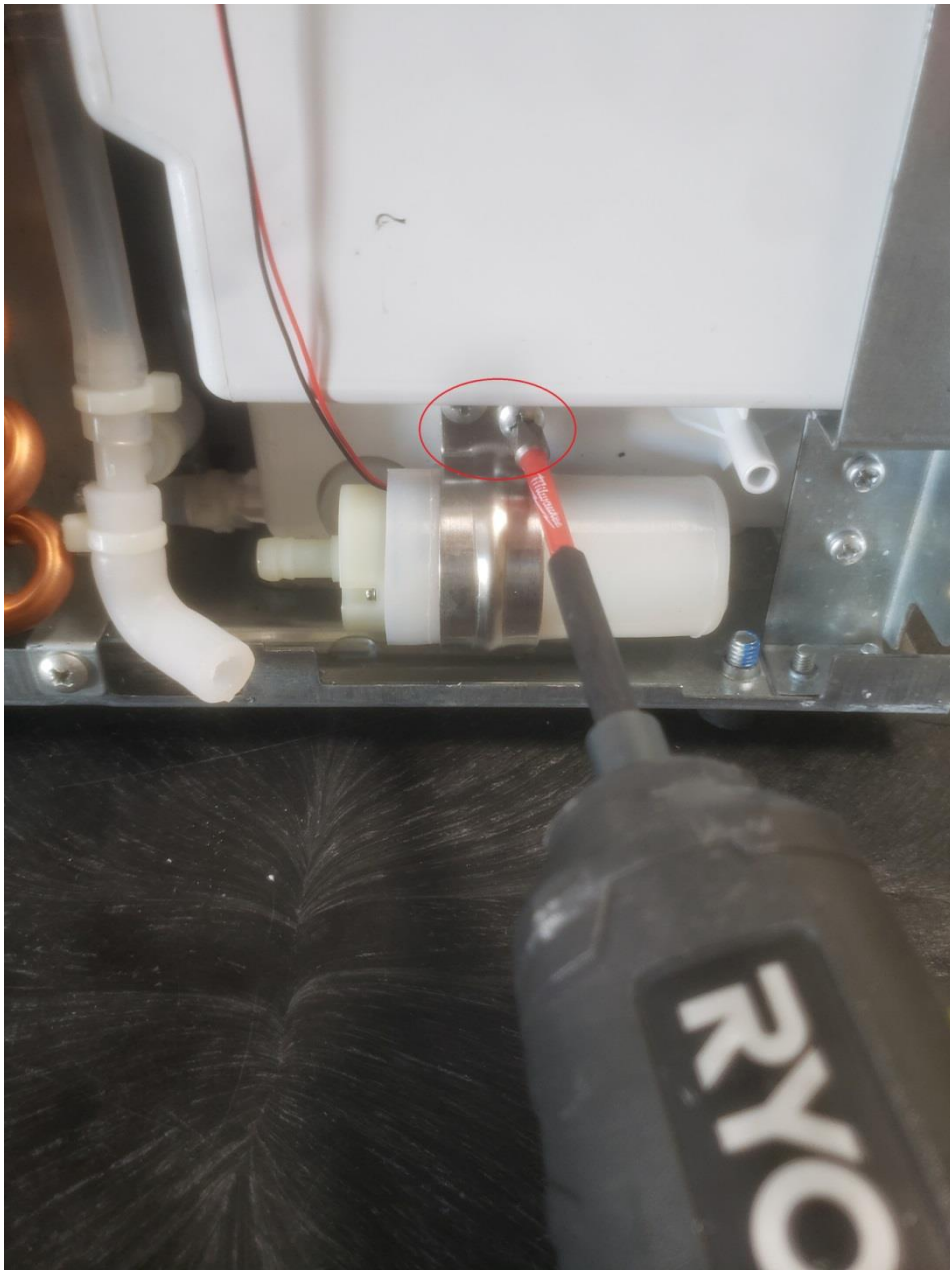
Check if both gaskets are good.



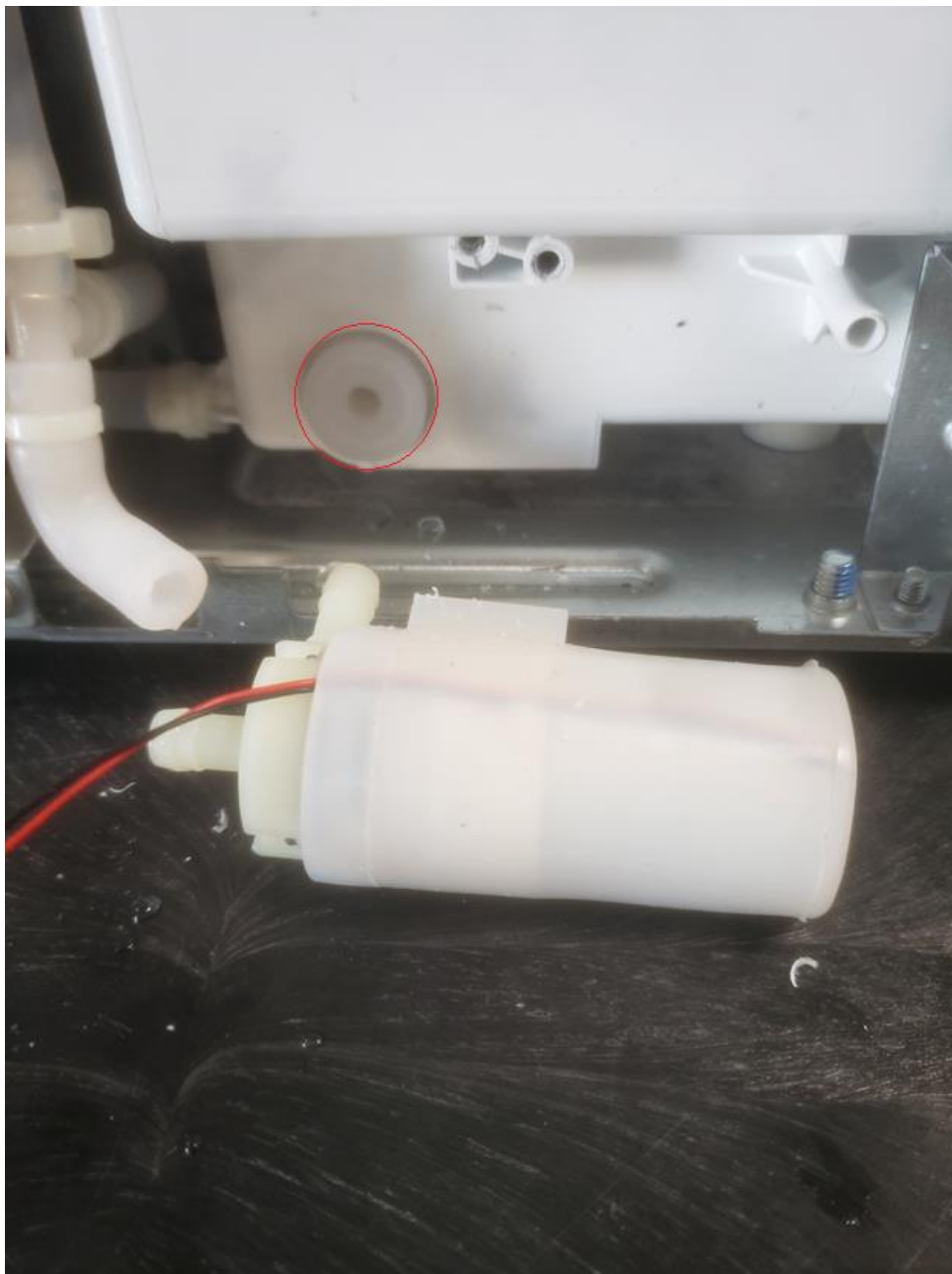
Disconnect the water pump power connector.



Cut the zip tie.
Disconnect the 90 degree elbow tube.



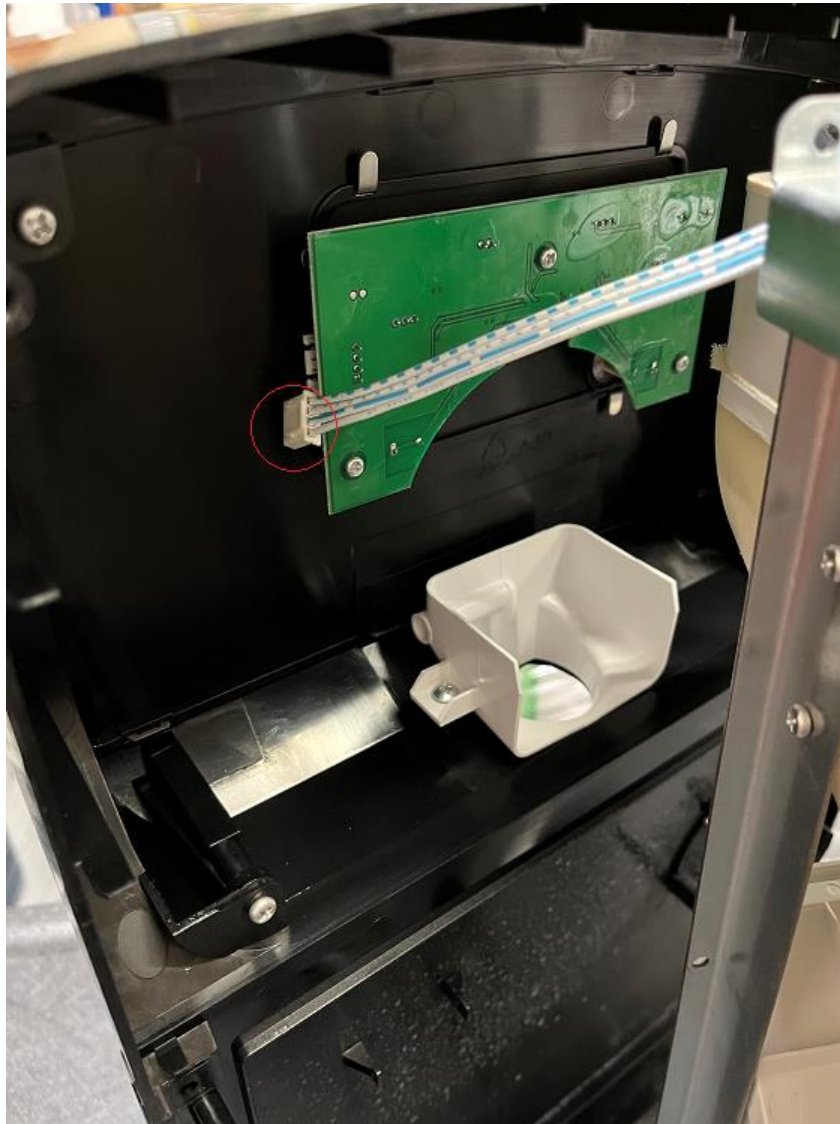
Remove the 2 self-tapping screws.



Pull the pump from the silicone grommet.



Remove 3 screws on each side.



Disconnect the display PCBA cable.