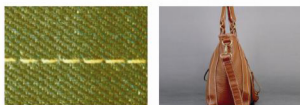


GEM0311D/0611D
上下复合送料自动剪线厚料平缝机
TOP AND BOTTOM FEEDING LOCKSTITCH SEWING
MACHINE WITH AUTO-TRIMMER FOR HEAVY DUTY



本机优势/Advantages

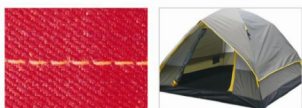
机头加长加高设计，令操作空间更宽敞。压脚提升高度增高，易于缝料的置入与取出，且采用旋钮调节装置，更方便的调节压脚交替量，主副压脚距离的调节量在2-5.5mm之间，提高了缝制品质；针距标盘采用锁紧装置，确保在倒顺缝操作下线迹长度不易变化；采用齿轮泵自动供油润滑系统，确保机器低速运转时也能充分润滑，超长针杆行程，大互动物量交替压脚，大针距9mm适用范围更广，本列系列产品有自动停针位、动剪线、自动倒顺缝、自动抬压脚（选购）等自动功能，提高工。

The machine head becomes longer and higher and the operating space is more spacious which makes it easy to put in and take out the sewing material with the increased presser foot height. With the dial adjustment device, the operator can adjust the presser foot differential easily. The adjustment between inner and outer presser foot is 2-5.5mm which improves the sewing quality. The stitch dial is with locking device; it ensures the stitch length remain stable while back feeding. Gear pump is with automatic lubrication system; it ensures the machine is sufficiently lubricated while running at low speed. The stitch length 9mm makes the machine widely used. This series machines is with automatic needle positioning, auto-trimmer, back feeding, presser foot lifter (optional) function.

用途 / Application

适用于箱包、沙发、皮革、汽车坐垫、帐篷、帆布、等中厚料、厚料的缝制
Suitable for bags, sofa, leather, car seats, tent, canvas and other medium and heavy duty.

GEM0611D/0611
综合送料自动剪线厚料平缝机（三同步）
COMPOUND FEEDING LOCKSTITCH WITH AUTO-TRIMMER FOR HEAVY DUTY



本机优势/Advantages

机头加长加高设计，令操作空间更宽敞。压脚提升高度增高，易于缝料的置入与取出，且采用旋钮调节装置，更方便的调节压脚交替量，主副压脚距离的调节量在2-5.5mm之间，提高了缝制品质；针距标盘采用锁紧装置，确保在倒顺缝操作下线迹长度不易变化；采用齿轮泵自动供油润滑系统，确保机器低速运转时也能充分润滑，超长针杆行程，大互动物量交替压脚，大针距9mm适用范围更广，本列系列产品有自动停针位、动剪线、自动倒顺缝、自动抬压脚（选购）等自动功能，提高工。

The machine head becomes longer and higher and the operating space is more spacious which makes it easy to put in and take out the sewing material with the increased presser foot height. With the dial adjustment device, the operator can adjust the presser foot differential easily. The adjustment between inner and outer presser foot is 2-5.5mm which improves the sewing quality. The stitch dial is with locking device; it ensures the stitch length remain stable while back feeding. Gear pump is with automatic lubrication system; it ensures the machine is sufficiently lubricated while running at low speed. The stitch length 9mm makes the machine widely used. This series machines is with automatic needle positioning, auto-trimmer, back feeding, presser foot lifter (optional) function.

| | Ⓜ | Ⓜ | ✂ | ↺ | ↻ | ↕ | ↕ | ↕ | ↕ | ↕ | ↕ | ↕ | ↕ | ↕ | ↕ | ↕ | ↕ |
|----------|---|---|---|---|---|----|---|------|----------|------|---|-----|-------------|---------|---|---|---|
| GEM0311D | - | ★ | - | - | - | 38 | 9 | 8/16 | DP×1 #23 | 2200 | ★ | 550 | 710×300×640 | | | | |
| GEM0611D | - | ★ | ★ | - | ★ | 38 | 9 | 8/16 | DP×1 #23 | 2200 | ★ | 750 | 710×300×640 | 38.5/46 | | | |