

# REMINGTON®



WPG-4030 *Use & Care Guide*



### Register Your New Product Today!

By registering your new Remington® product, you will receive these important benefits:  
Proof of Ownership • Product Protection • Product Registration • Special Offers  
Register online at: [www.RemingtonProducts.com](http://www.RemingtonProducts.com)

## IMPORTANT SAFETY INSTRUCTIONS

Thank you for choosing REMINGTON®. Our products are designed to meet the highest standard of quality, functionality and design. The model you have chosen can be used in or out of the shower and is designed to provide gentle, close hair removal. Please read the instructions for use carefully and keep in a safe place for future reference.

### READ ALL INSTRUCTIONS BEFORE USING THIS APPLIANCE.

## DANGER

#### To reduce the risk of electric shock:

- Do not reach for an appliance that has fallen into water. Unplug it immediately.
- Do not use an extension cord with this appliance.
- Do not place or drop into water or other liquid.
- Do not use while bathing or in the shower if the appliance is plugged in.
- Do not place or store this appliance where it can fall or be pulled into a tub or sink.
- Except when charging, always unplug this appliance from the electrical outlet immediately after using.
- Unplug this appliance before cleaning it.
- Charger unit is not for immersion or for use in the shower.

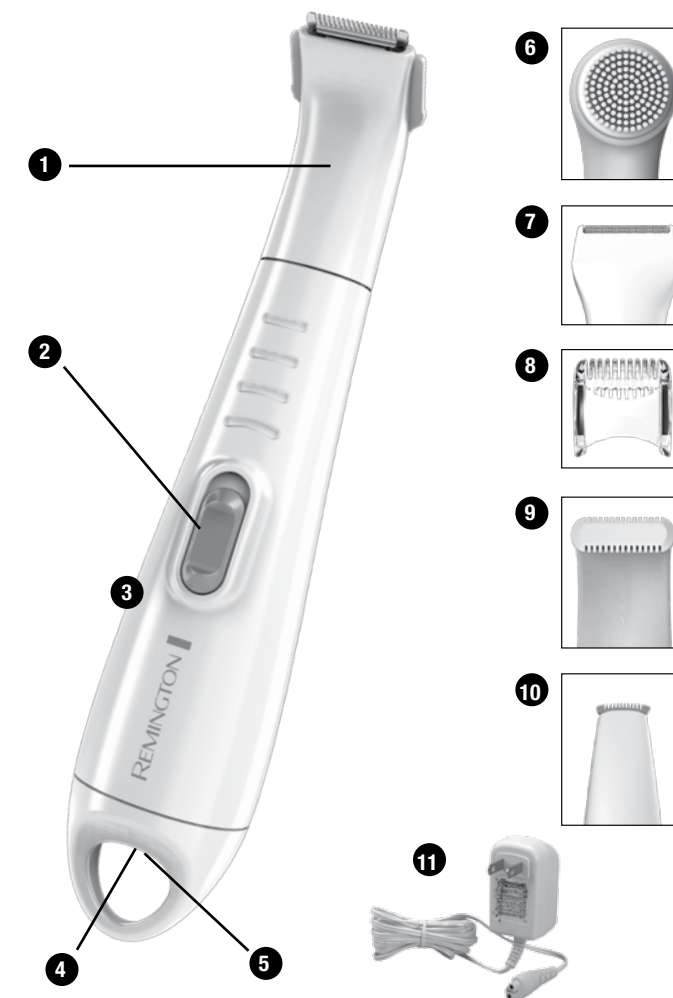
## WARNING

#### To reduce the risk of burns, fire, electric shock or injury to persons:

- This appliance is for household use only.
- This appliance should never be left unattended when it's running.
- Close supervision is necessary when this appliance is used by, on, or near children and persons with special needs or certain disabilities.

- Use this appliance only for its intended use as described in this manual.
- Do not use the foil shaver on your scalp.
- Do not use attachments not recommended by the manufacturer.
- Never drop or insert any object into any of the appliance's openings.
- Do not use outdoors or operate where aerosol (spray) products are being used, or where oxygen is being administered.
- Do not use this appliance with a damaged or broken cutter unit, as injury may occur. Always make sure blades are aligned properly.
- Do not use this product if it is not working correctly, if it has been dropped or damaged, or dropped into water.

### Product Features



### Body & Bikini Groomer Checklist

- |                              |                            |
|------------------------------|----------------------------|
| 1. Bikini trimmer attachment | 7. Foil shaver attachment  |
| 2. On/Off switch             | 8. Adjustable length guide |
| 3. Groomer body              | 9. Gentle trimmer          |
| 4. Power inlet               | 10. Detail trimmer         |
| 5. Charging indicator        | 11. Power cord             |
| 6. Exfoliation attachment    |                            |

### Before Using

*Please refer to the safety instructions and warnings at the front of this manual before use.*

#### FIRST: CHARGE IT!

Before using your personal groomer for the first time, put it on charge for 14-16 hours.

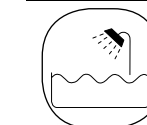
#### TO CHARGE THE GROOMER

Your groomer automatically begins to recharge as soon as it is plugged into the charging adapter. While it is charging, the green indicator light will be on. Your groomer cannot be turned on while it is charging. Do not attempt to operate groomer when it is plugged into the charging adapter.

#### NOTE:

This product is for cordless use only. Do not use your groomer while it is plugged into electrical outlet.

### Usage Tips



The groomer is a wet groomer, the hand-held part of which may be used in a bath or shower.

- Use only the charging adapter supplied with the groomer.
- Charging should be done at temperatures between 40° and 95°F, or it could decrease the battery's life.
- Make sure the groomer is turned off.
- Connect the cord to the groomer, then plug the charging adapter into the electrical outlet. A charging indicator light will come on.
- If the unit is not going to be used for an extended period of time (2-3 months) fully recharge when you want to use it again.
- Use the product until the battery is low. This is indicated by the groomer running distinctly slower.

## SAVE THESE INSTRUCTIONS

## How To Use

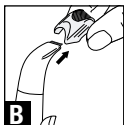
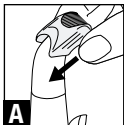
### Attachments

Your personal groomer has six different attachments (including length guide) to meet all your grooming needs. Just place the attachment on the handle and turn it clockwise until the lock symbols align.

#### BIKINI TRIMMER PLUS LENGTH GUIDE ATTACHMENT

You can use the bikini trimmer on the outside of your bikini line or add the 3-position guide attachment for trimming inside your bikini line.

1. To attach guide, simply slide it onto the trimmer as shown. (Diagram A)
2. To adjust the length, grip the sides of the guide, slide the guide off, adjust to align into desired slots and slide back into locked position. (Diagram B)



#### EXFOLIATOR

This attachment is designed to gently exfoliate while leaving skin feeling and looking smoother. Use in continuous circular motion.

- Do not use near long hair, as the hair may become entangled in the spinning head.

#### FOIL SHAVER

You can use this attachment for smaller areas such as your bikini line, under-arms or the fine, downy hair on your face. It was not designed to shave larger areas such as your legs. Use it dry, or use it wet with soap, foaming gel, or body wash if you prefer.

Hold the groomer so the foil shaver screen gently touches your skin. This allows the unit to work the way it was designed for the closest shave and minimum screen wear. Avoid holding the groomer at an angle. This will distort the screen and may cause some skin irritation.

**NOTE:** Ask your dermatologist before using on irritated skin or skin with rosacea.

#### GENTLE TRIMMER

This attachment is designed with completely covered cutting elements on both sides. You can feel comfortable using this attachment at any angle in delicate areas.

#### DETAIL TRIMMER

This attachment is designed for trimming in more sensitive, harder to reach areas, and to remove any stray body hairs.

## Cleaning, Care & Maintenance

### Clean Your Groomer Regularly

#### CLEANING CAUTIONS

- Do not use harsh or corrosive cleaners on the units or their cutters.
- Do not apply pressure or hard objects to cutters.
- Do not disassemble cutter assembly.
- There are no user serviceable parts.
- The handheld unit should be turned off before cleaning.

#### CLEANING WITH WATER

Your groomer's trimmer attachments have rust-resistant, stainless-steel cutting blades that permit the cutting assemblies to be rinsed under running water if you choose.

- Remove all attachments by rotating them counter-clockwise to the unlock position and pulling the attachment off.
- Rinse the attachments under warm running water. Do NOT use hot water, which may cause damage to components.
- Rinsing the groomer under water or using when in the shower may require lubricating the cutter blades periodically. Using only light-grade oils (e.g. sewing machine oil), simply spread 1-2 drops lightly over cutters with fingertip. Wipe away all excess.

## Cleaning, Care & Maintenance (cont.)

#### CLEANING THE FOIL SHAVER

- Press the buttons at the ends of the screen head.
- Remove the head and shake out the clippings or rinse.
- Blow off the cutter assembly or rinse.
- Replace the head, making sure the unit snaps in place.

#### CLEANING THE EXFOLIATOR

- Once a week remove the brush and wash with warm soapy water to remove any residue build-up.
- Allow to air dry.
- Once the bristles become fatigued, replace exfoliator.

U.S. residents: To order accessories, contact us at 800-392-6544 or visit us at RemingtonProducts.com.

Canadian residents: To order accessories, please call 800-268-0425 or visit us at RemingtonProducts.com.

## Warranty

### Limited Two-Year Warranty

Spectrum Brands, Inc. warrants this product against any defects that are due to faulty material or workmanship for a two-year period from the original date of consumer purchase. This warranty does not include damage to the product resulting from accident or misuse.

If the product should become defective within the warranty period, we will replace it free of charge. Return your product and sales receipt with your name, address and day time phone number to: Remington Returns Center, 507 Stokely Dr., P.O. Box 1, Deforest, WI 53532. For more information call 800-736-4648 in the U.S. or 800-268-0425 in Canada.

#### KEEP ORIGINAL SALES RECEIPT AS PROOF OF PURCHASE FOR WARRANTY PURPOSES.

This warranty does not cover products damaged by the following:

- Accident, misuse, abuse or alteration of the product
- Servicing by unauthorized persons
- Use with unauthorized accessories
- Connecting it to incorrect current and voltage
- Any other conditions beyond our control

*No responsibility, obligations, or liability is assumed for the installation or maintenance of this product.*

**SPECTRUM BRANDS, INC. SHALL NOT BE RESPONSIBLE FOR ANY INCIDENTAL, SPECIAL OR CONSEQUENTIAL DAMAGES RESULTING FROM THE USE OF THIS PRODUCT. ALL IMPLIED WARRANTIES, INCLUDING BUT NOT LIMITED TO IMPLIED WARRANTIES OF FITNESS AND MERCHANTABILITY, ARE LIMITED IN DURATION TO TWO YEARS FROM DATE OF ORIGINAL PURCHASE.**

This warranty gives you specific legal rights and you may also have other rights which vary from state to state or province to province. Some states do not allow the exclusion or limitation of incidental, special or consequential damages.

### Spectrum Brands, Inc. Money-back Offer

If within 30 days after you have purchased your Remington® branded product, you are not satisfied and would like a refund, return it with the sales slip indicating purchase price and date of purchase to the retailer from whom it was purchased. Spectrum Brands, Inc. will reimburse all retailers who accept the product within 30 days from the date of purchase. If you have any questions concerning the money-back guarantee, please call 800-736-4648 in the U.S. or 800-268-0425 in Canada.

120 VAC 60 Hz

**Questions or comments:** Call 800-736-4648 in U.S. or 800-268-0425 in Canada or visit **RemingtonProducts.com**

® and TM Trademarks of ROVICAL, Inc., a subsidiary of Spectrum Brands, Inc.

©2012 ROVICAL, Inc. 9/12 Job# 2012-7-17\_70

Dist By: Spectrum Brands, Inc., Madison, WI 53711

Dist. by: Spectrum Brands Canada, Inc.  
4180 Sladeview Crescent, Mississauga, ON L5L 0A1

**Manufactured to Remington's specifications in the PRC.  
T22-0000623**

Contains



listed adaptor