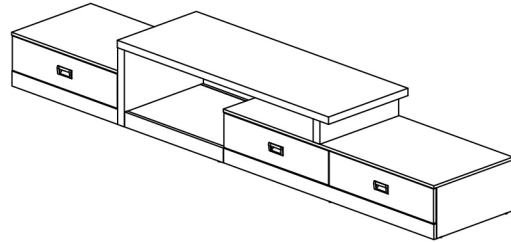
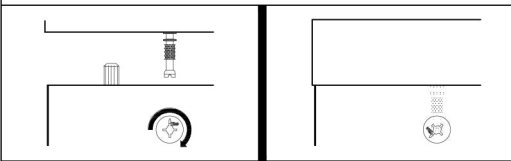


Assembly Instruction

Model : FTV - 4125



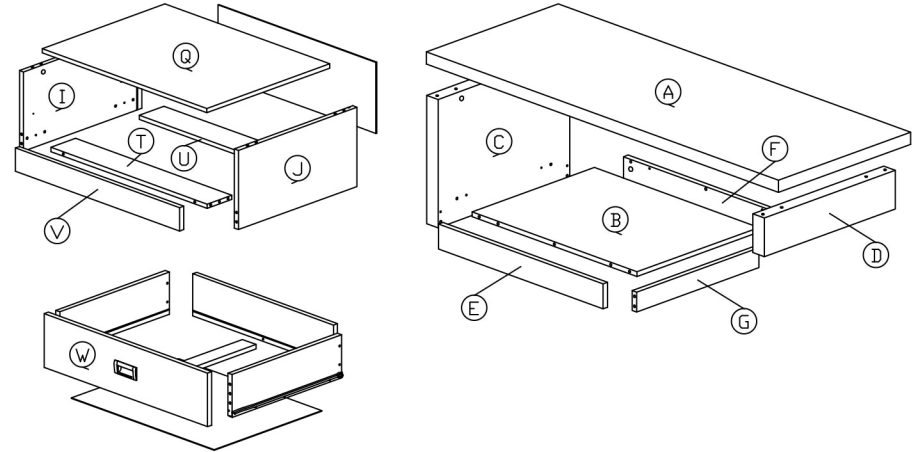
Dowel / Cam - Lock Installation



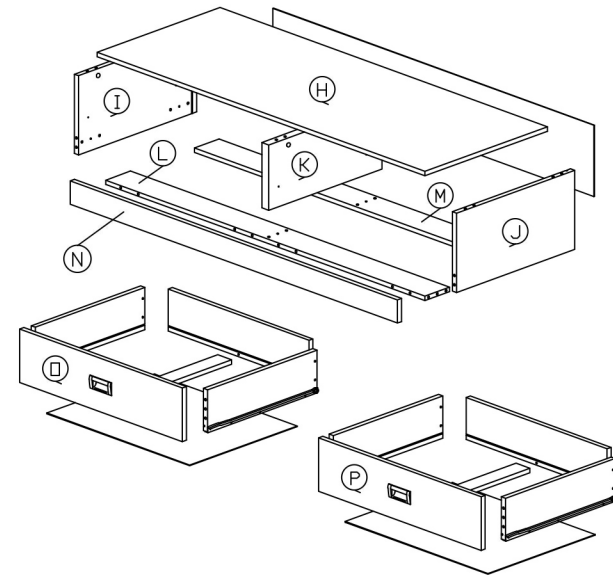
Hardware List

No.	SHAPE	DESCRIPTION	Qty.
1		8x25mm Wood Dowel	70Pcs
2		15MM Titus Mini Fix	47Sets
3		M3.5x15mm Screw	12Pcs
4		M4x38mm Screw	15Pcs
5		M5x38mm Screw	2Pcs
6		Nail	15Pcs
7		Nail Leg	13Pcs
8		Drawer Slide 16" (400mm)	3Sets
9		15mm Minifix Cap	4Pcs

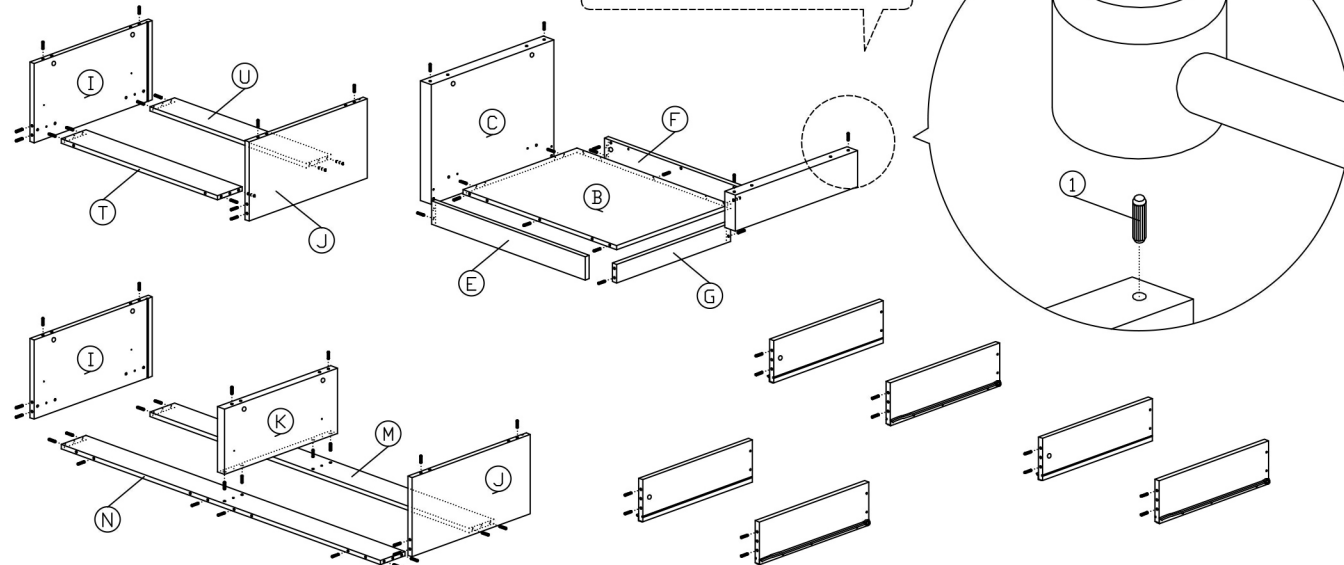
Part List



Part List

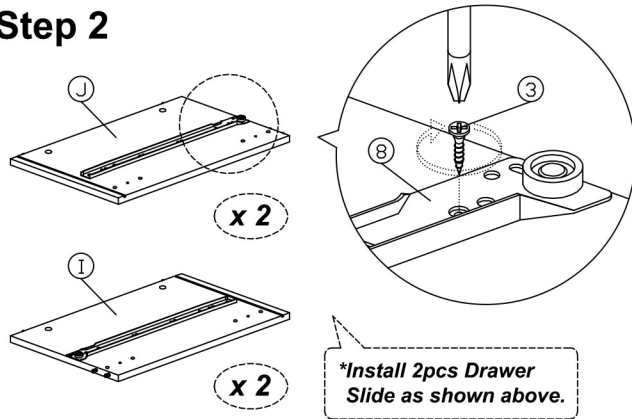


Step 1

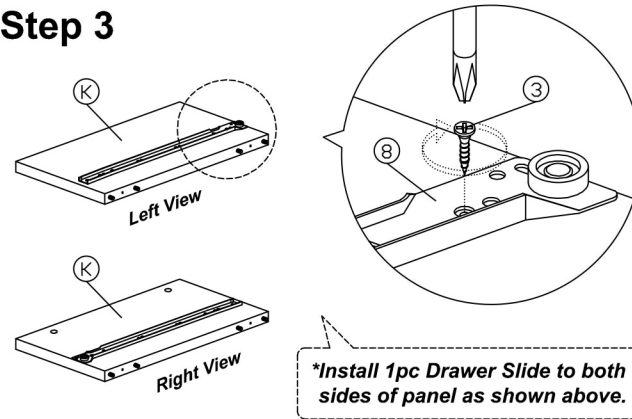


Assembly Instruction

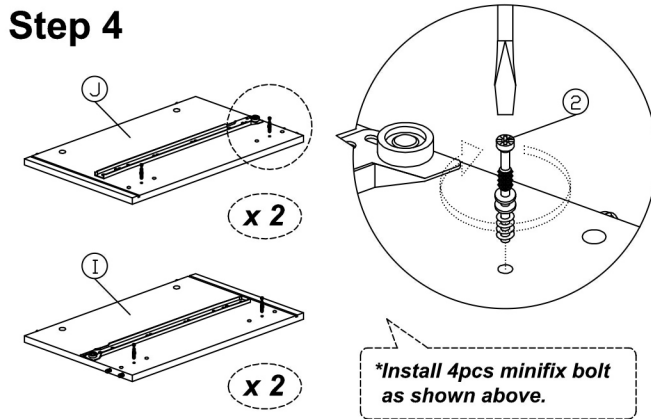
Step 2



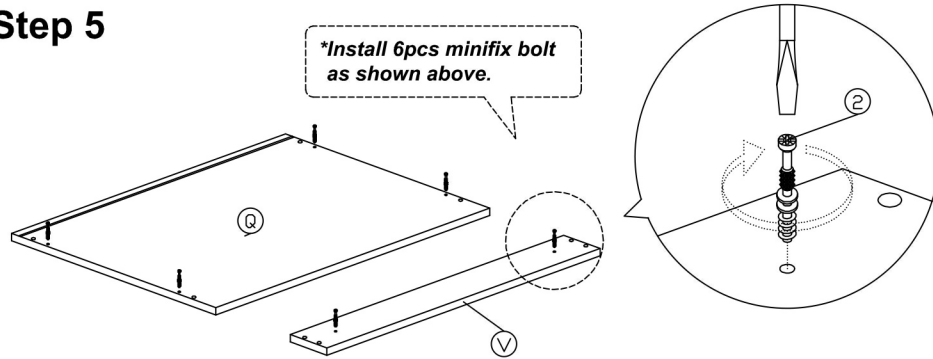
Step 3



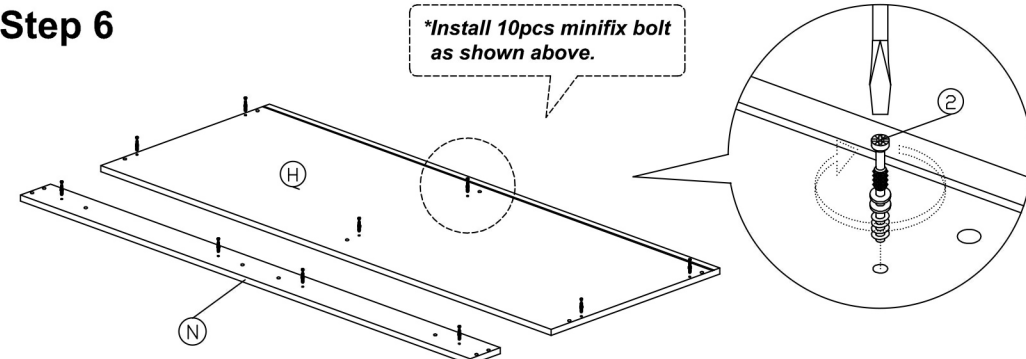
Step 4



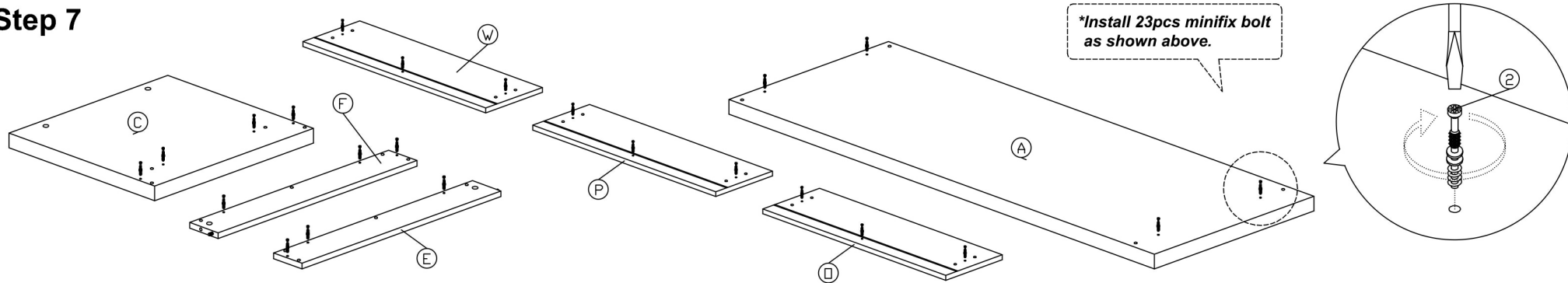
Step 5



Step 6

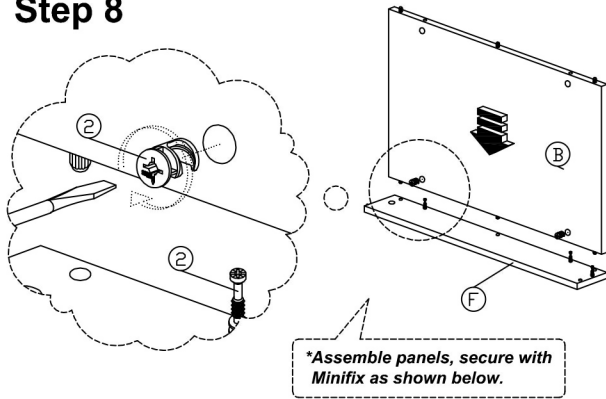


Step 7

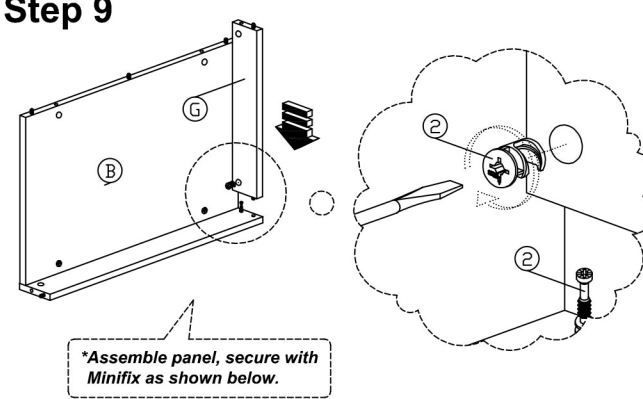


Assembly Instruction

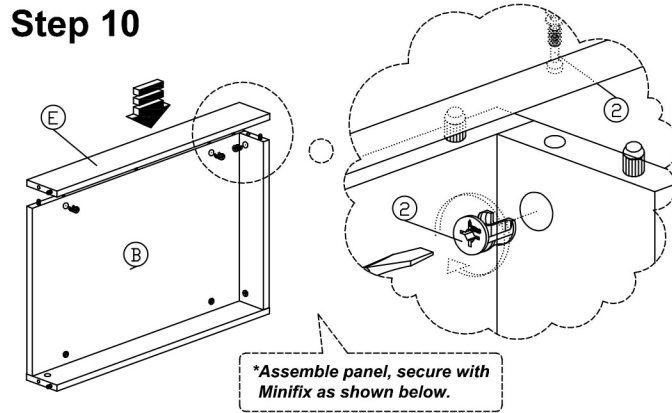
Step 8



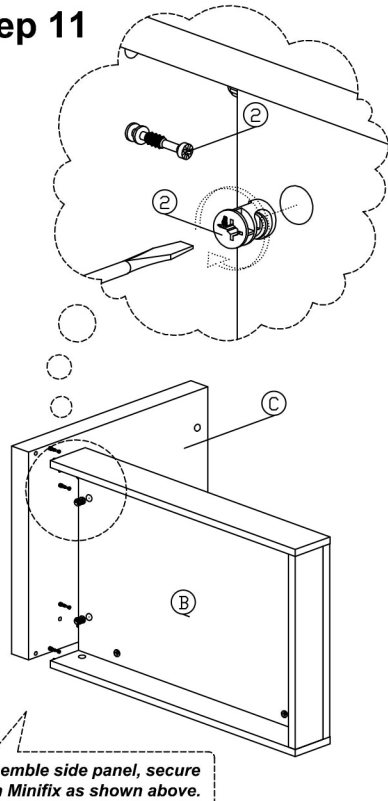
Step 9



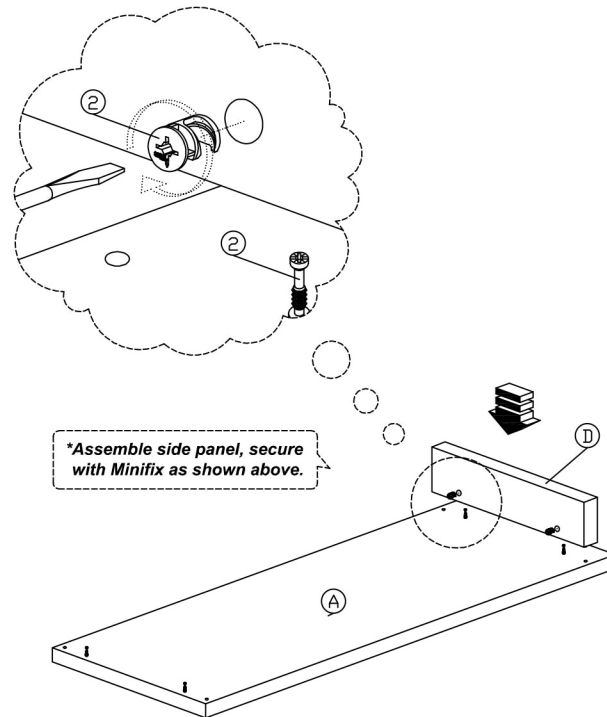
Step 10



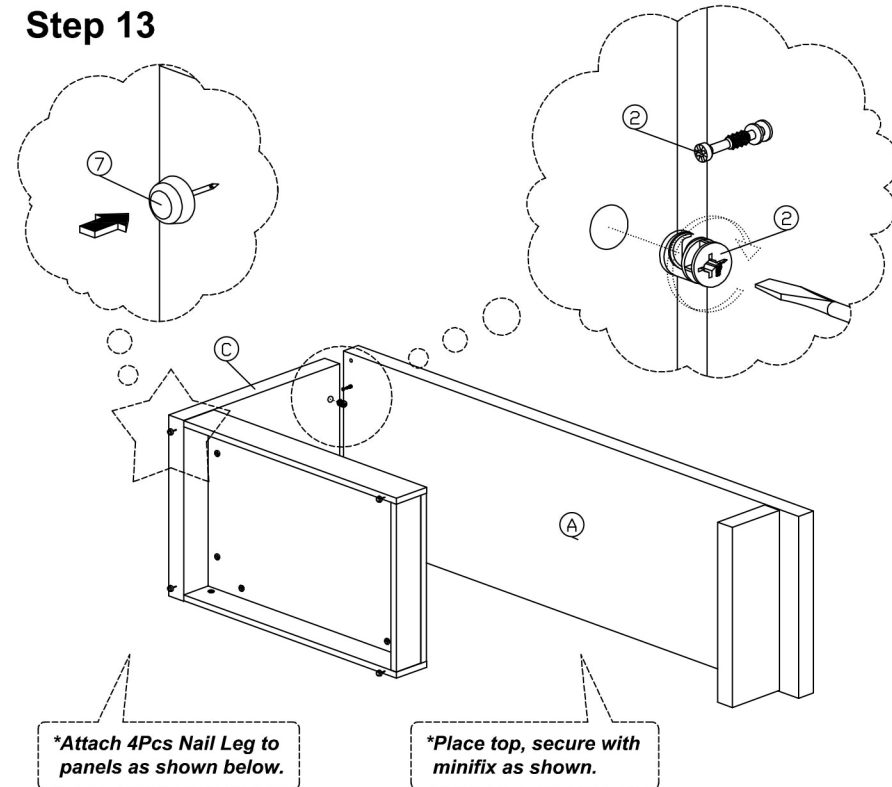
Step 11



Step 12

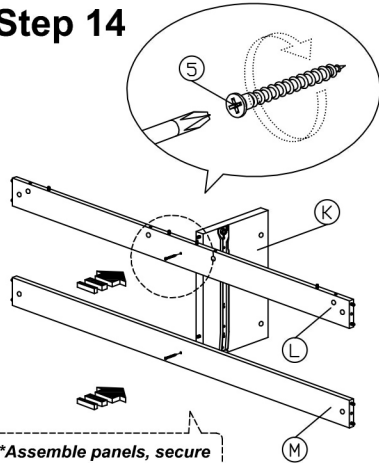


Step 13

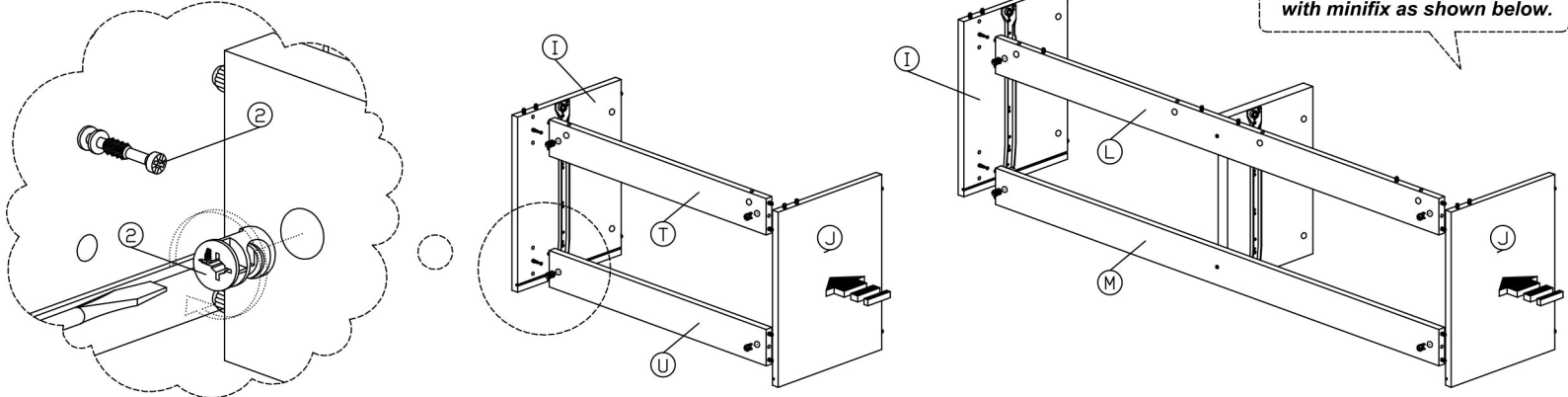


Assembly Instruction

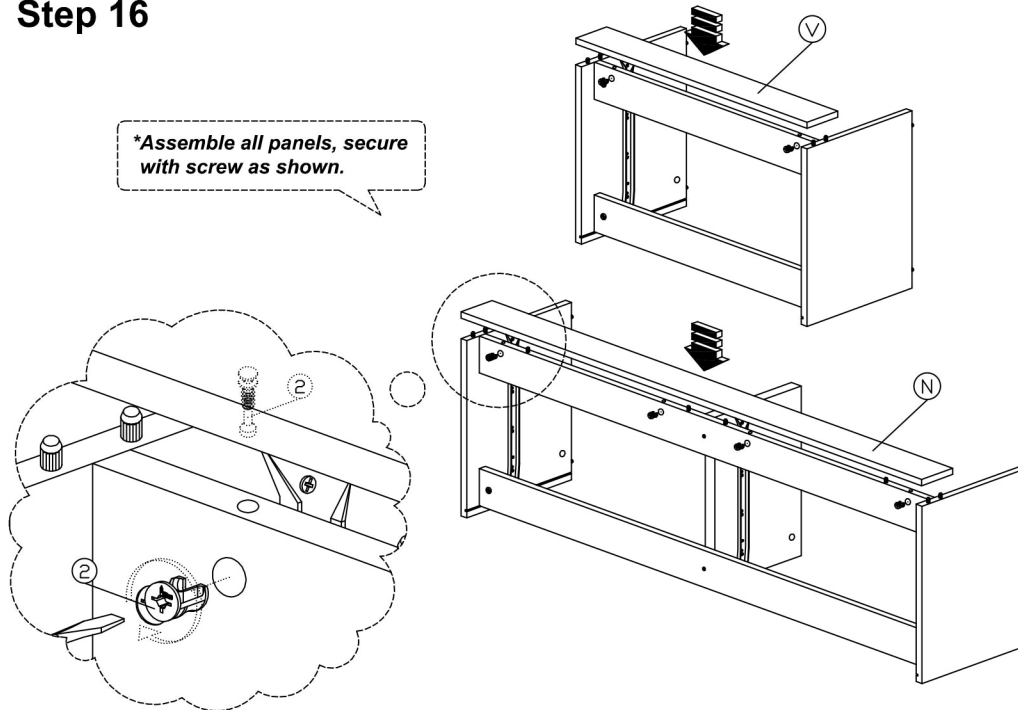
Step 14



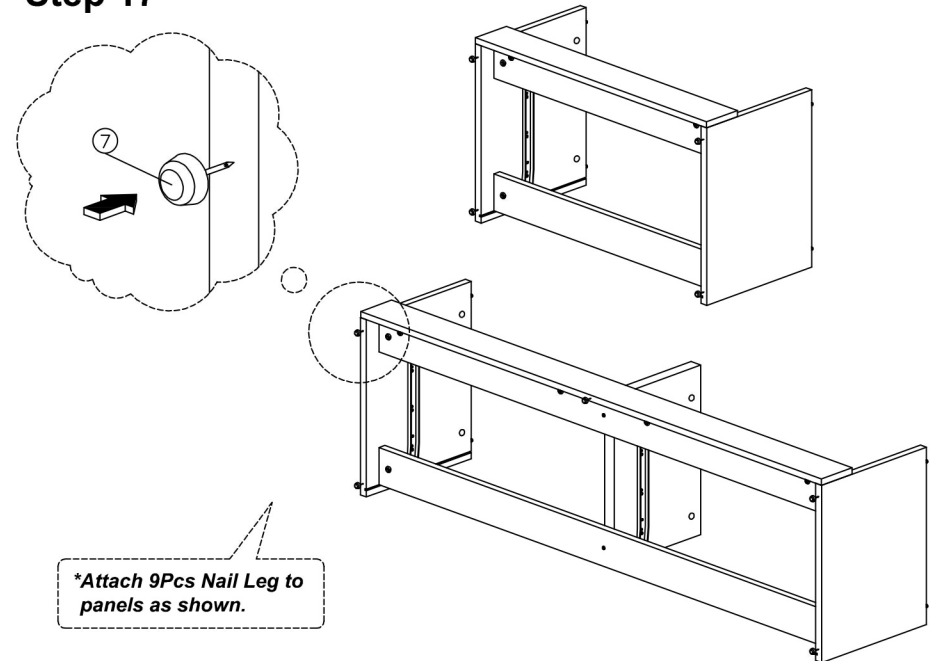
Step 15



Step 16

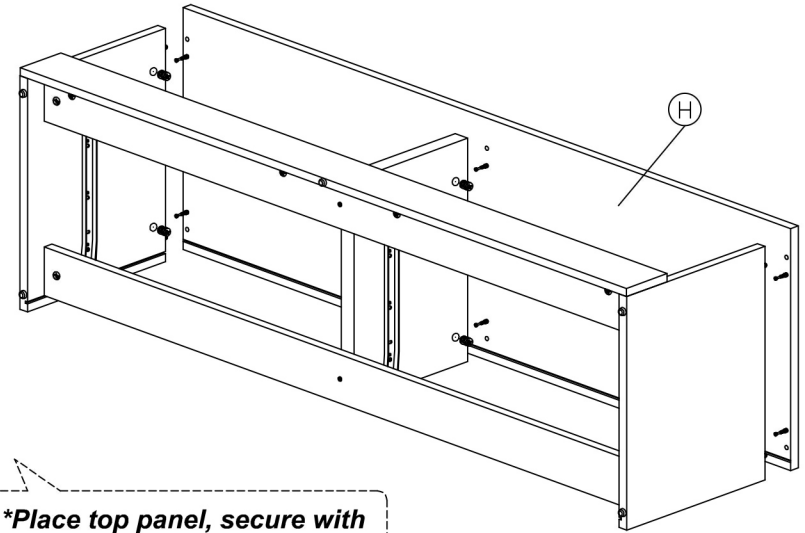
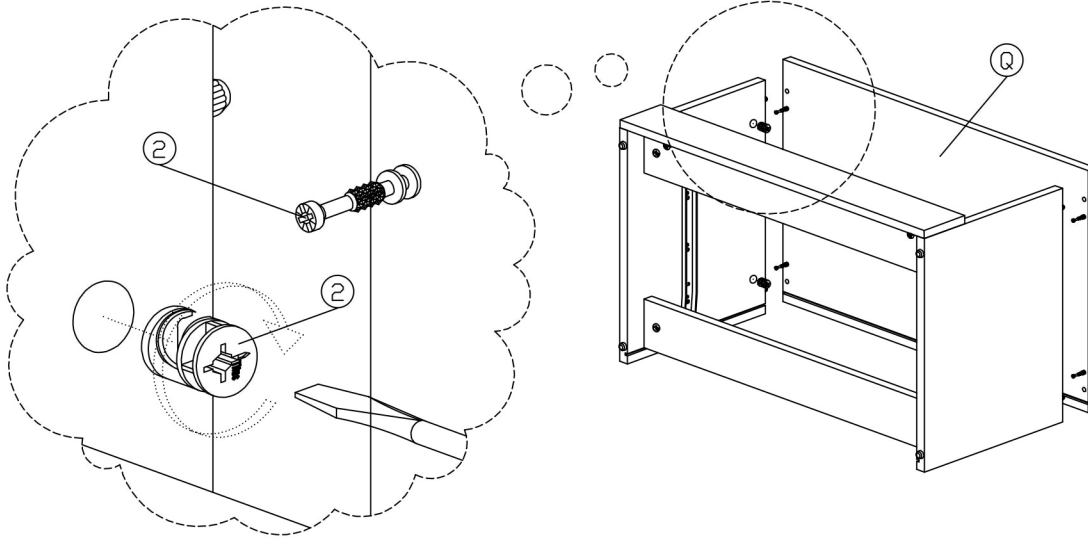


Step 17



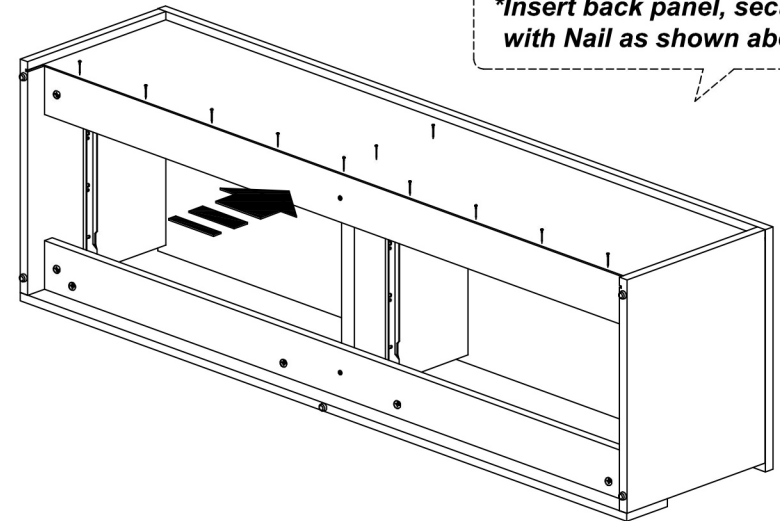
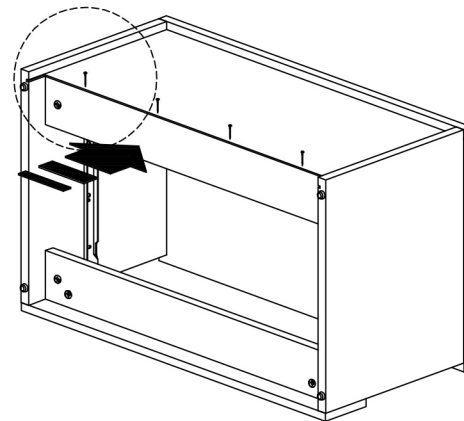
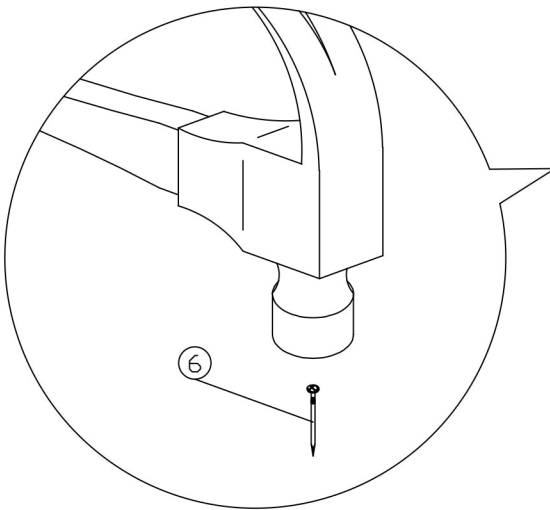
Assembly Instruction

Step 18



**Place top panel, secure with minifix as shown above.*

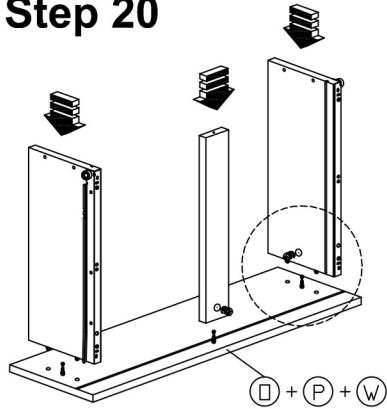
Step 19



**Insert back panel, secure with Nail as shown above.*

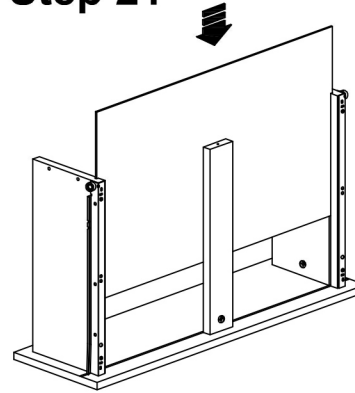
Assembly Instruction

Step 20



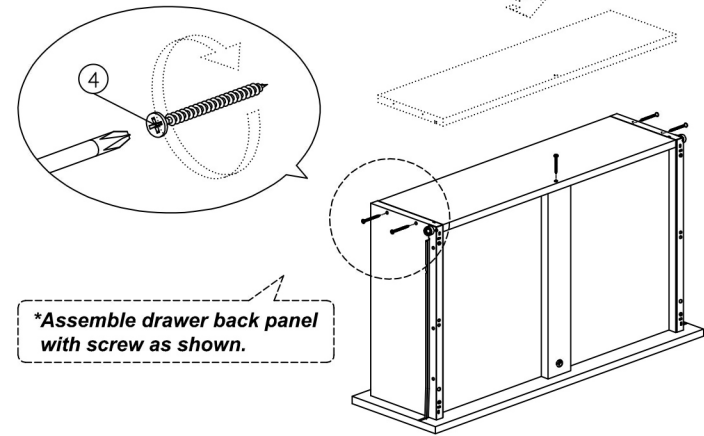
**Assemble drawer panels, secure with minifix as shown below.*

Step 21



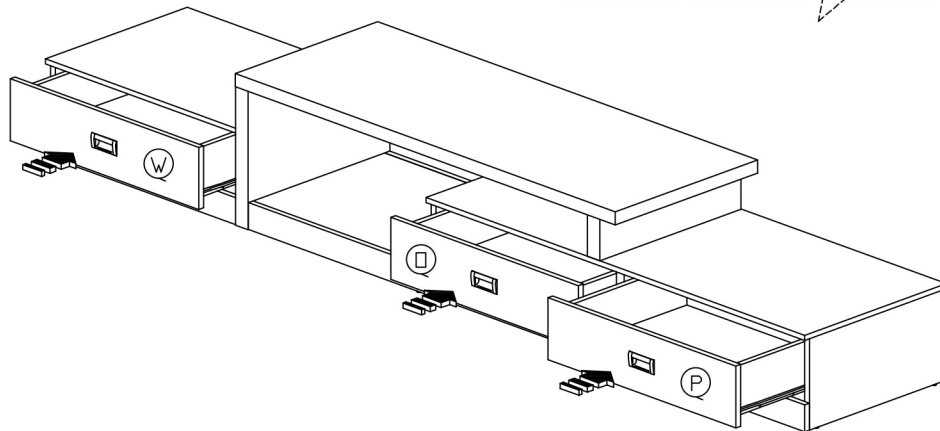
**Insert drawer bottom as shown.*

Step 22



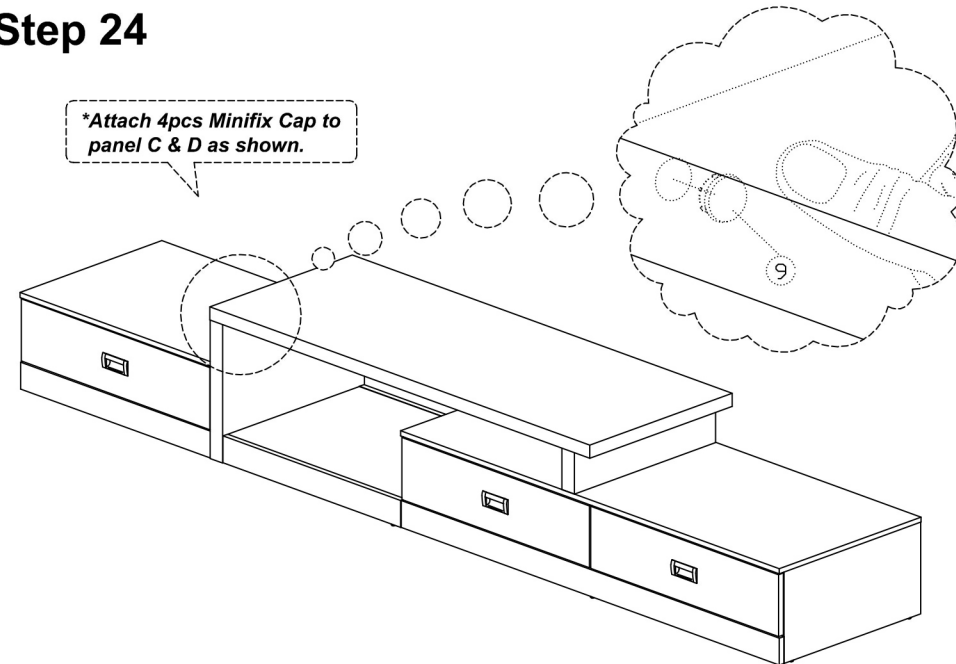
**Assemble drawer back panel with screw as shown.*

Step 23



**Place drawer into cabinet as shown.*

Step 24



**Attach 4pcs Minifix Cap to panel C & D as shown.*