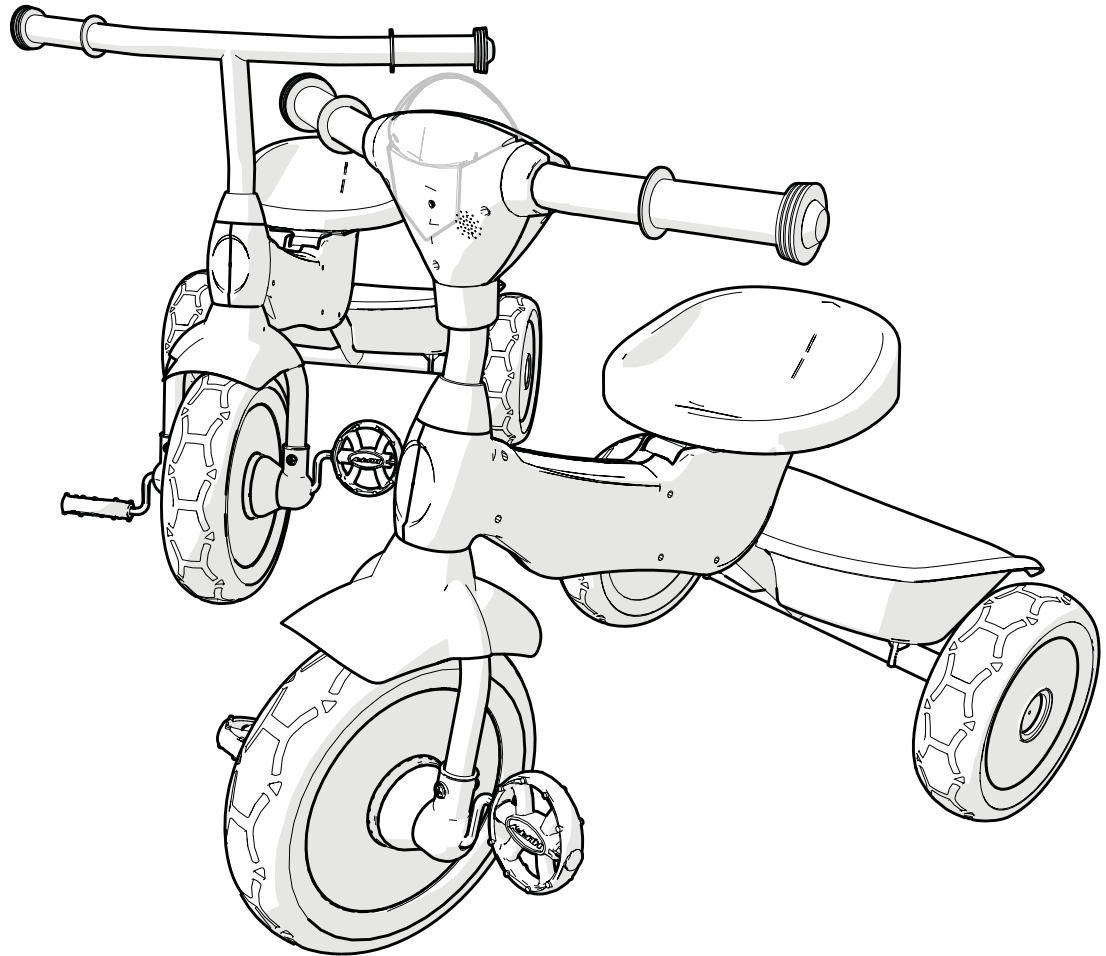


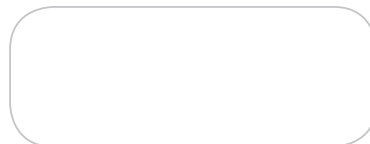
Owner's Manual

Folding Trike



**THIS MANUAL CONTAINS IMPORTANT SAFETY, ASSEMBLY,
OPERATION AND MAINTENANCE INFORMATION.**

**PLEASE READ AND FULLY UNDERSTAND THIS MANUAL
BEFORE OPERATION.
SAVE THIS MANUAL FOR FUTURE REFERENCE.**



Manual Index

ENGLISH

• Safety Information	2/3
• Maintenance	3
• Trike Assembly	4/5
• Parts View.....	6/7
• Folding / Unfolding Trike	8
• Lights and Sounds Operation (if equipped)	9/10
• Warranty	11

Safety Information

Trikes, like all wheeled vehicles, will provide safe, enjoyable transportation and recreation when used and maintained properly. Like bicycling, skateboarding, and in-line skating, riding a Trike can be dangerous even under the best of circumstances. We do not want you to get hurt. Please follow these safety rules.



This symbol is important. It is the WARNING symbol. The warning symbol precedes safety instructions. Make sure the child understands these instructions. Failure to follow these instructions may result in injury to the rider or to others, or damage to the product.



WARNING TO AVOID SERIOUS INJURY:

- An adult must assemble this product.
- Keep small loose parts and plastic bags out of the reach of children.
- An adult must unfold and fold this product.
- Adult supervision is required.
- This product should only be used by persons 3 years and up.
- Never ride with more than one person.
- Maximum rider weight for this product is 27kg. (60 lbs).
- Do not allow a child to ride in the rear plastic bin.
- Maximum weight for the rear plastic bin is 2.3kg. (5 lbs).
- Excessive weight in the rear bin may cause a hazardous or unstable condition.
- Do not allow a child to ride without a CPSC approved helmet, with the chinstrap securely fastened.
- Do not allow a child to ride without shoes.
- Do not allow a child to ride the product at dusk, at night or at times of limited visibility.
- Do not allow a child to ride on roadways or alleys.

Safety Information - continued

- Do not allow a child to ride off road, on grass or wet surfaces.
- Do not allow a child to ride on sloped driveways or hills.
- Do not allow a child to ride near steps.
- Do not allow a child to ride near swimming pool areas, or other bodies of water.
- Always comply with local laws and regulations.
- For use on smooth paved surfaces only.
- Understand all operating procedures before use.
- Do not tow or pull any objects with the product.
- Do not push or pull a child riding on the product.
- Replace worn or broken parts immediately.
- Not suitable for children under 3 years as foam pieces may break off and pose a choking hazard.
- If anything does not operate properly, discontinue use.

If you have any questions regarding the operation of this product, please refer to this owners manual or call Customer Service - see Consumer Service contact info.

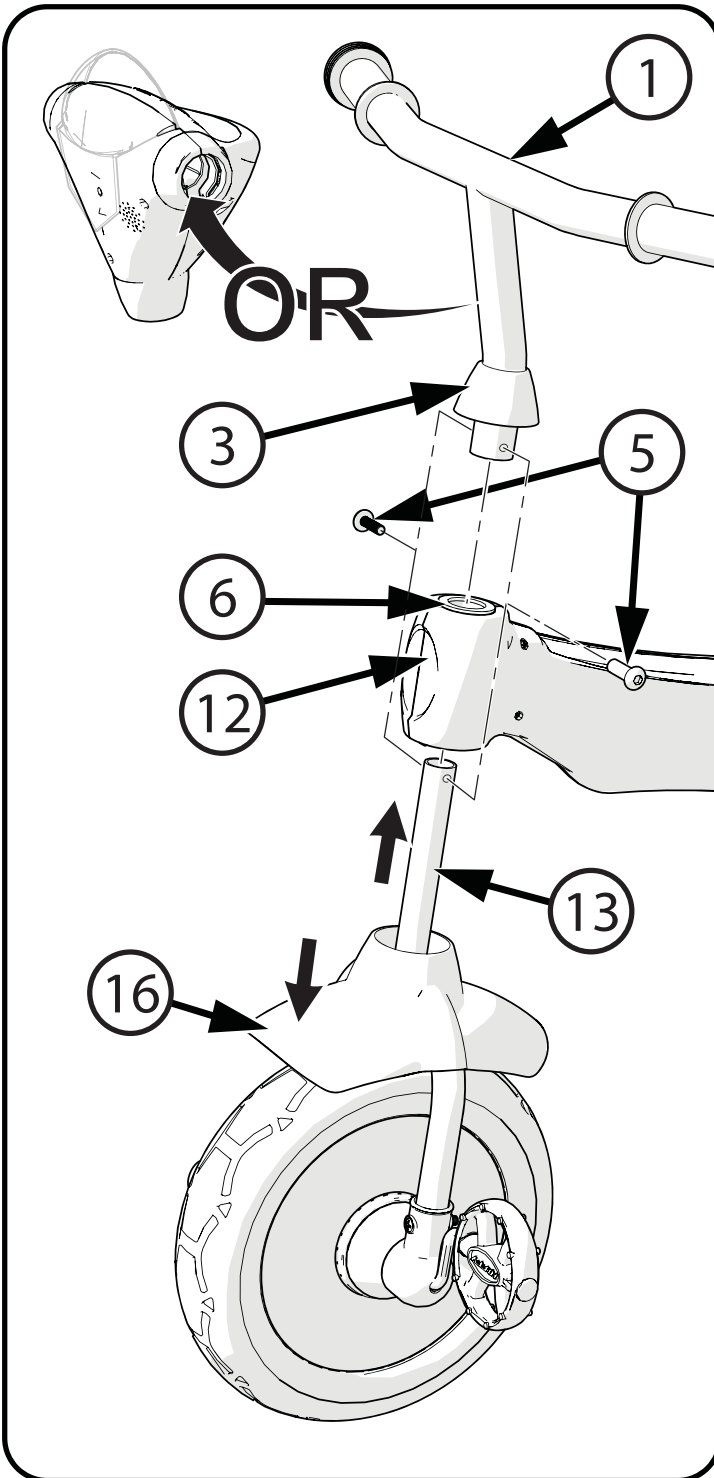
Maintenance

The trike does not require maintenance. However, the trike should be checked periodically for any loose, broken, or worn parts. Tighten any parts that are loose, and replace any worn or broken parts immediately. Periodic cleaning will prolong the useful life of this trike.

Do not store outside or expose Lights and Sounds unit (if equipped) to water.

Trike Assembly

The Trike comes either fully or partially assembled. Follow the instructions below for Trike Assembly. If equipped, the Lights and Sound unit will be installed on the Handlebars.



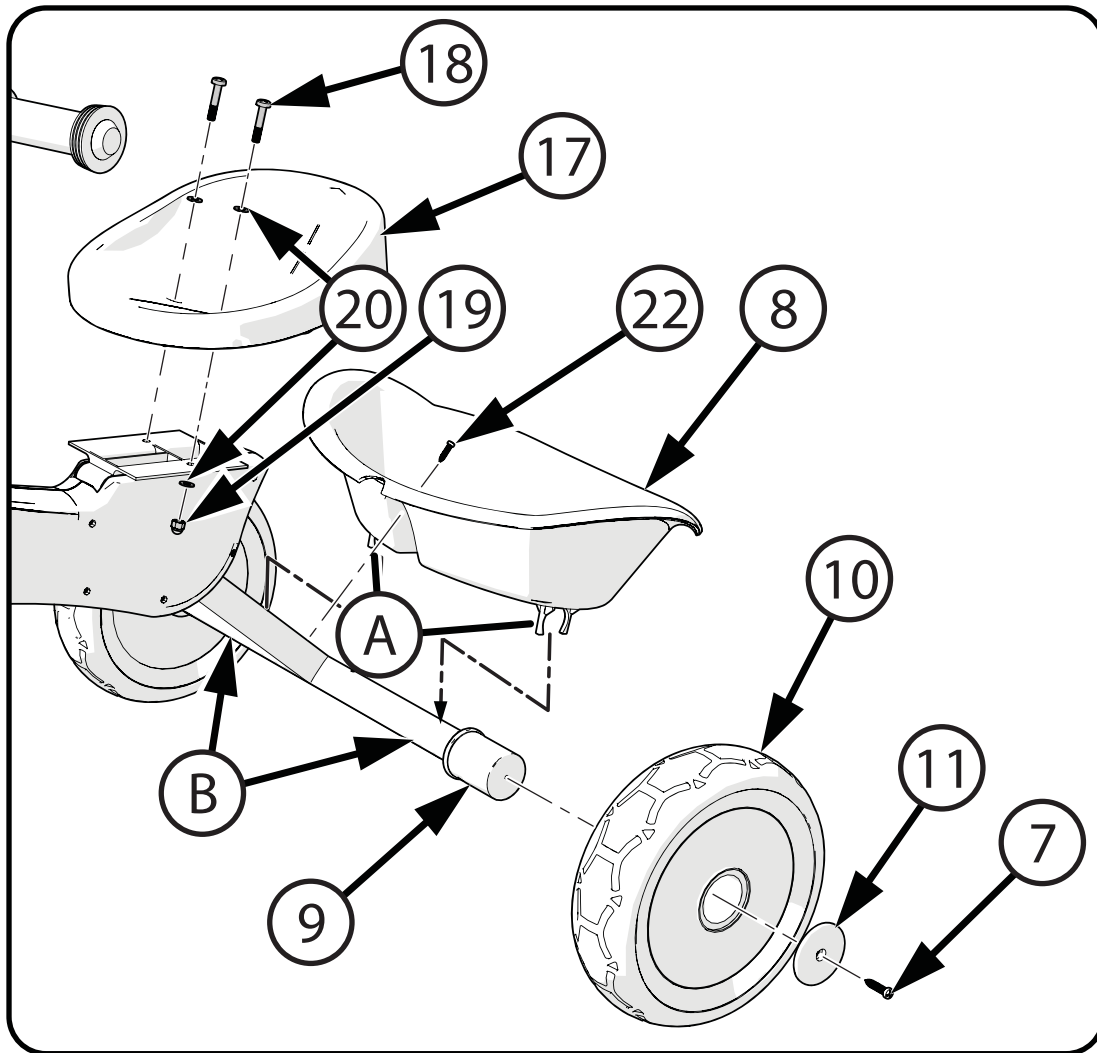
Fork, Handlebars and Lights and Sounds unit (if equipped):

1. Place the Fender (16) over the fork (13) as shown.
2. Slide the Fork assembly into the Frame (12).
3. Place Cap (3) onto Handlebar (1).
4. Make sure Spacer (6) is in place over Fork Tube (13).
5. Install Handlebar (1) into Fork (13) so that screw holes are aligned.
6. Install Screw Set (5) through Handlebar and Fork holes. Tighten securely.
7. Slide Cap (3) down until the tabs snap in place.



CAUTION:

- Ensure Handlebars and Fork turn smoothly in both directions and are not loose.
- Ensure front Wheel and Pedals rotate smoothly.



Rear Wheels:

1. Install Rear Wheels (10) over Axle Cups (9).
2. Install Axle Cap (11) with screw (7). Ensure Axle Cap is seated all the way in.
3. Repeat for opposite side.
4. Tighten Screws (7) securely but Do Not overtighten.

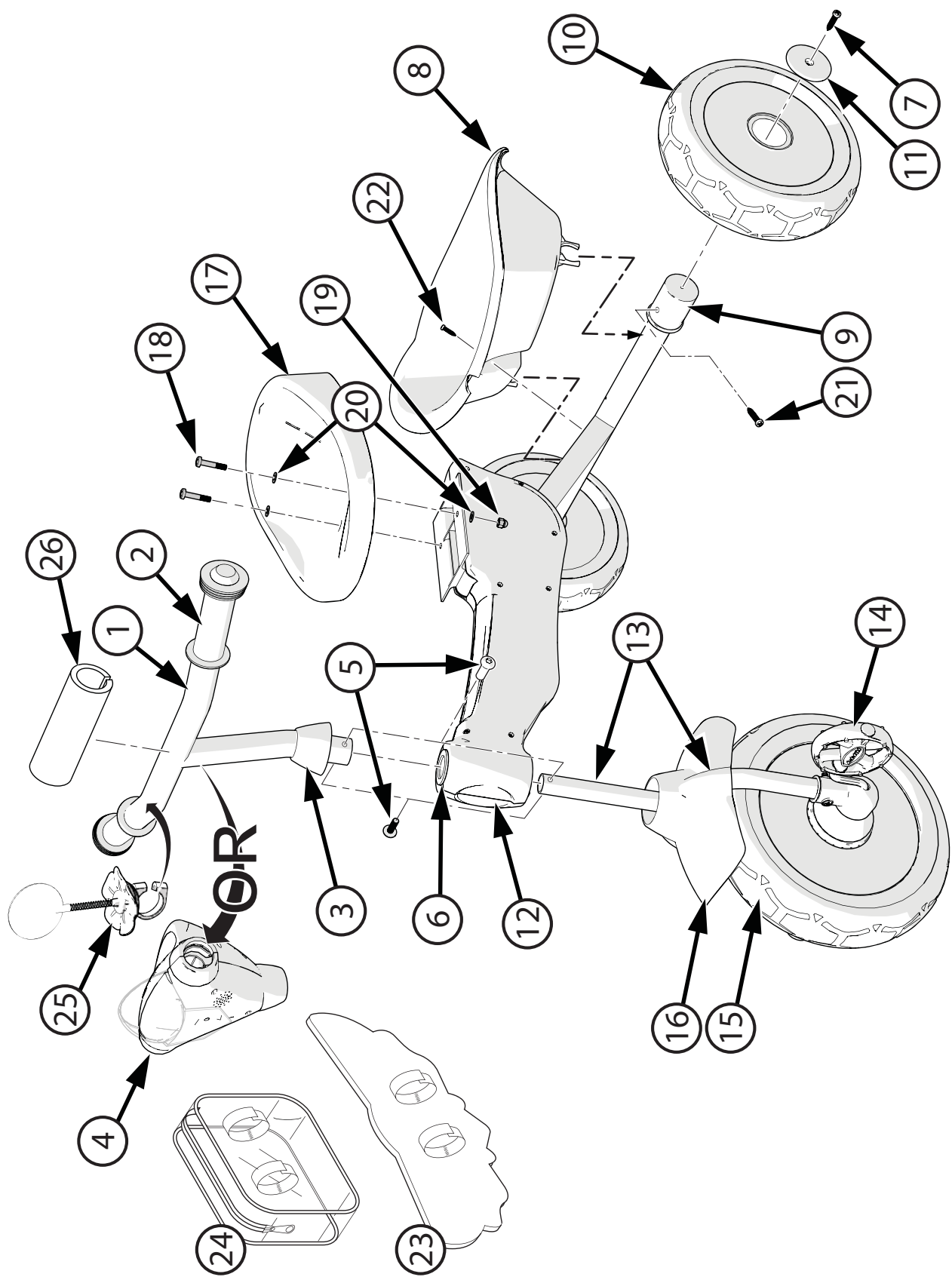


WARNING:

- Ensure Wheels turn smoothly.
- The Wheels can come off if the Screws are not tight or if the screw threads are stripped.

Plastic Bin and Seat:

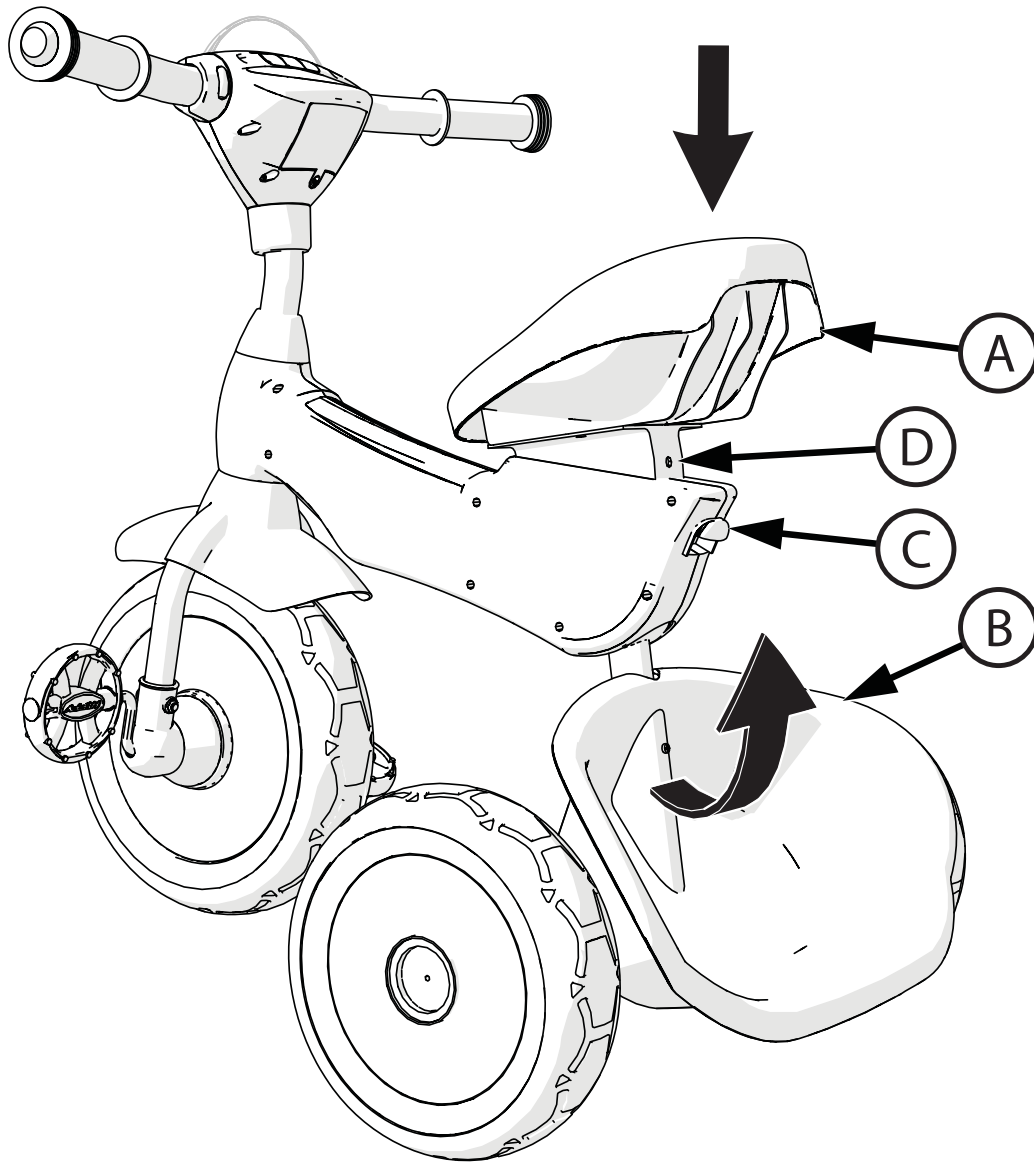
1. Install Seat (17) using 2 Screws (18) , 2 Nuts (19) and 4 Washers (20) as shown. Do Not overtighten.
2. Snap the two Bin clips (A) over Frame Legs (B).
3. Install Plastic Bin (8) using Screw (22) into Frame Tube as shown. Do Not over-tighten.



Components

Item #	Description	Item #	Description
1	Handlebar	14	Pedal (x2)
2	Grips (x2)	15	Front Wheel
3	Collar	16	Fender
4	Lights & Sounds Unit (if equipped)	17	Seat
5	Captive Screw Set	18	Screw (x2)
6	Steering Collar	19	Nut (x2)
7	Screw (x2)	20	Washer (x4)
8	Plastic Bin	21	Self Tapping Screw (m4 x 2)
9	Axle Cup (x2)	22	Self Tapping Screw
10	Rear Wheel (x2)	23	Plaque (various models)
11	Axle Cap (x2)	24	Bag (various models)
12	Frame Assembly	25	Handlebar Accessory (various models)
13	Fork Assembly	26	Handlebar Pad (various models)

Parts List



To Unfold the Product:

- Gently push down on Seat (A) and pull back on Rear Assembly (B) until the unit locks into place.
- Make sure Locking Button (C) snaps into Seat Pivot Hole (D) - an audible CLICK will be heard.

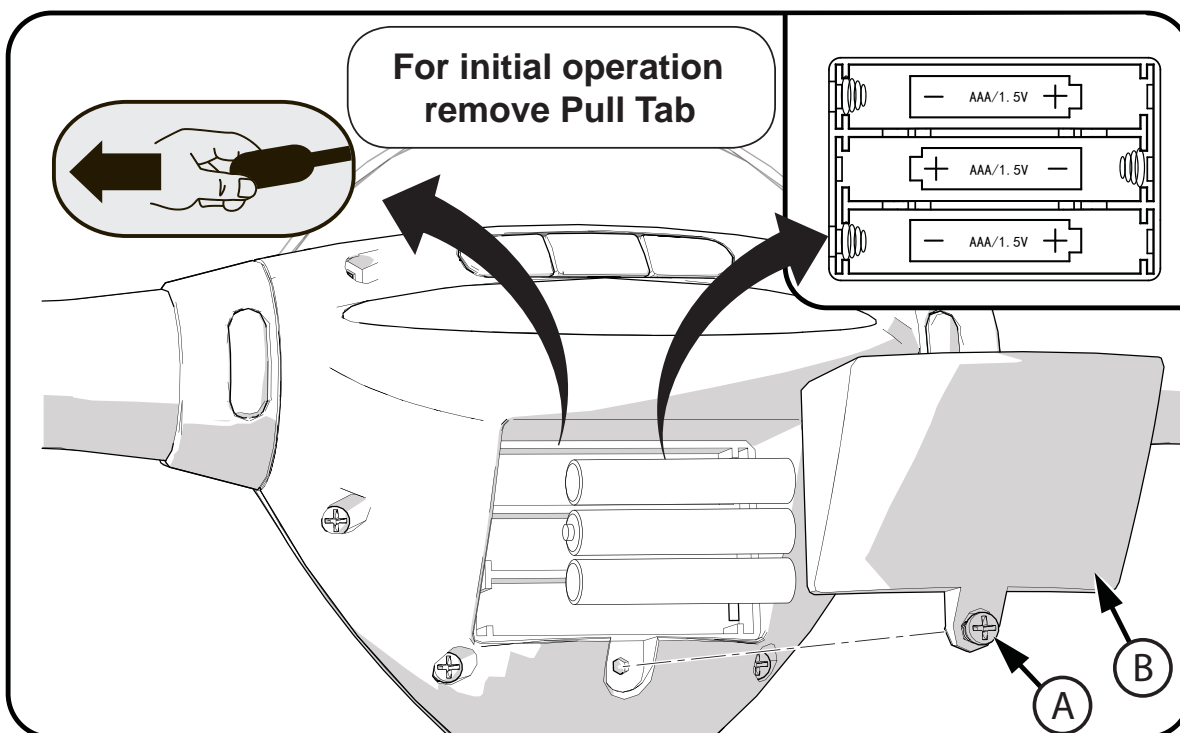
To Fold the Product:

- Pull out Locking Button (C) to release Seat Pivot Hole (D).
- Gently fold Rear Assembly (B) IN towards Front Wheel.



WARNING: An adult must fold and unfold this product each time.

Lights and Sounds Unit Setup (if equipped)



Battery Replacement (For initial operation remove Pull Tab):

Batteries: DC 1.5V, AAA (included). The unit requires 3 batteries.

1. Loosen the battery compartment cover Screw (A) to remove the Cover (B).
2. Insert batteries in the orientation shown inside the compartment.
3. Re-install the compartment cover and tighten the screw.



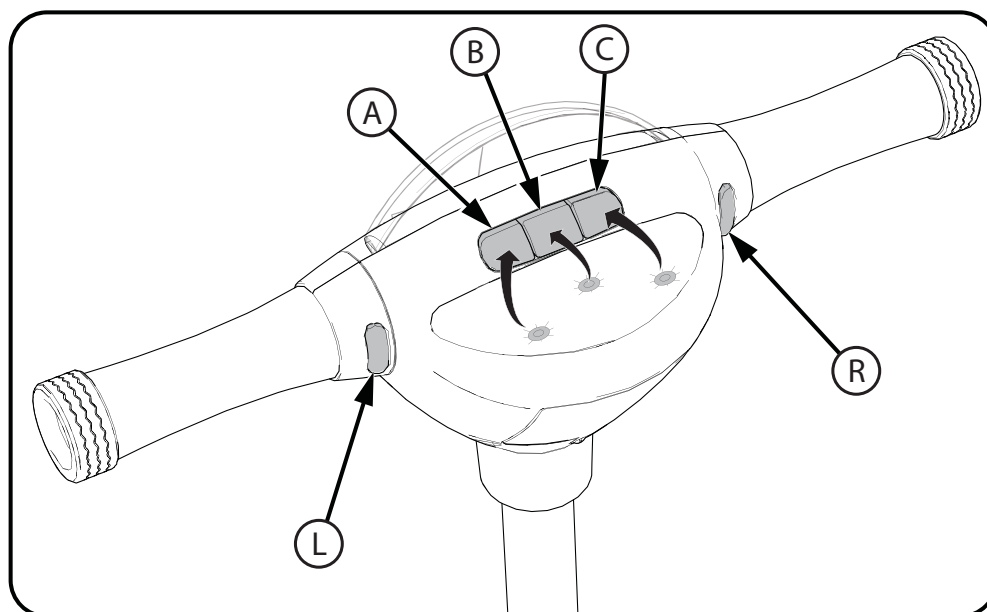
WARNINGS:

- Battery replacement is to be conducted by an adult.
- Dispose of batteries properly. Do not dispose of batteries in fire, batteries may explode or leak. Check local regulations for proper battery disposal.
- Non-rechargeable batteries are not to be recharged.
- Different types of batteries or new and used batteries are not to be mixed.
- Only batteries of the same or equivalent type as recommended are to be used.
- Batteries are to be inserted with the correct polarity.
- Keep the unit from getting wet.
- The battery supply terminals are not to be short-circuited.
- Rechargeable batteries are to be removed from the unit before being charged.
- Rechargeable batteries are only to be charged under adult supervision.

This unit produces flashing lights and light patterns. Although rare, it is possible for children to be susceptible to photosensitive seizures when exposed to certain flashing lights or light patterns. It is important that parents monitor their children while playing with this unit. To reduce exposure to such potential, play in a well-lit area and keep an appropriate distance from the flashing lights.

Parents must assess whether their child's capabilities, development and coordination is appropriate for use of this unit.

Lights and Sounds Unit Operation (if equipped)



The various Lights and sounds are activated by pressing and releasing Buttons **A**, **B**, **C**, **L** and **R**. Specific button combinations will activate special Lights and Sounds sequences.

- **Game Mode #1 Sing-A-Long:** Push and Hold Button (C) for 1 second:
 - To keep the song playing, press the corresponding button when a light flashes.
- **Game Mode #2 - Simon Says:** Push and Hold Button (B) for 1 second:
 - After the Light Sequence shows, repeat using the corresponding buttons.
- **Game Mode #3 - Follow The Leader:** Push and Hold Button (A) for 1 second:
 - When a light shows, press the corresponding button.

Reset Unit: If ANY Button is pushed continuously for more than 10 seconds, a BEEP will play for 1.0 second and the unit will reset.

If there are problems with operation – ensure the batteries are not low and they are properly installed.

To clear all operations: Remove the batteries and re-install.

Huffy Corporation Limited Warranty

Part or model specifications are subject to change without notice.

This Limited Warranty is the only warranty for this product. There are no express warranties. The only uses for this product are described in this manual. Warranty registration is not required. This limited warranty extends only to the original consumer and is not transferable.

What does this Limited Warranty cover?

This Limited Warranty covers all parts of the product.

What must you do to keep the Limited Warranty in effect?

This Limited Warranty is effective only if:

- the product is completely and correctly assembled;
- the product is used under normal conditions for its intended purpose (see “Warnings” for excluded activities);
- the product receives all necessary maintenance and adjustments.

What is not covered by this Limited Warranty?

This product is designed for recreational use only. This Limited Warranty does not cover normal wear and tear, normal maintenance items, or any damage, failure, or loss that is caused by improper assembly, maintenance, adjustment, storage, or use.

This Limited Warranty is void if the product is ever:

- used for stunt riding, jumping, acrobatics, or similar activity;
- ridden by more than one person at a time, or the weight limit is exceeded;
- used in a manner contrary to the instructions in this manual.

How long does this Limited Warranty Last?

All components are warranted for 6 months from the date of purchase.

What will the manufacturer do?

The manufacturer will replace, without charge to you, any component found to be defective. The original owner must pay all labor and transportation charges associated with the repair or warranty work.

How do you get service?

Contact Huffy Consumer Service.

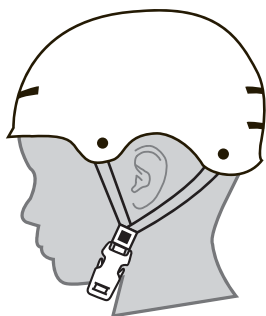
See included list for Customer Contact information.

What rights do you have?

This Limited Warranty gives you specific legal rights. You may also have other rights which vary from state to state.



WARNING: ALWAYS WEAR YOUR HELMET WHEN RIDING THIS PRODUCT!



CORRECT



INCORRECT

- Helmet should sit level on your head and low on your forehead
- Adjust the strap sliders below the ear on both sides.
- Buckle the chin strap. Adjust strap until it is snug.
- No more than two fingers should fit between the strap and your chin.
- A proper fitting helmet should be comfortable and not rock forward/backward or side to side.
- Always read the user manual that comes with your helmet to make sure it is fitted and attached properly to the wearer's head according to the fitting instructions described in the user manual.

Check **www.Huffy.com** for the current contact information