



CHANGING YOUR LANDSCAPE SINCE 1945

Owner's Manual

***Plow Blade
18749
18750***



Plow Blade requires 12019 adaptor kit and either a 10260 or a 2646 mount kit (sold separately).

ATV ACCESSORIES

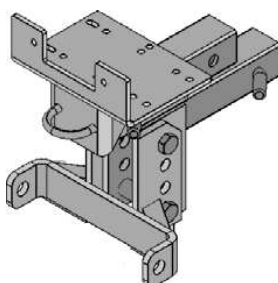
Sold as Separate Pieces!!!!



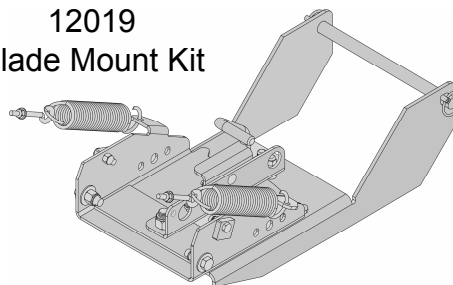
IMPORTANT
Read and follow all
Safety Precautions
and Instructions
Before Operating this
Equipment.



Front Hitch Mount
10260



12019
Blade Mount Kit



Universal Mount
2646



***made In The
USA***

ASSEMBLY / OPERATION / SERVICE AND ADJUSTMENT / REPAIR PARTS

1602 CORPORATE DRIVE WARRENSBURG, MISSOURI 64093
TELEPHONE: 800.222.8183 FAX: 660.747.8650
swisherinc.com

LIMITED WARRANTY

The manufacturer's warranty to the original consumer purchaser is: This product is free from defects in materials and workmanship for a period of one (1) year from the date of purchase by the original consumer purchaser. We will repair or replace, at our discretion, parts found to be defective due to materials or workmanship. This warranty is subject to the following limitations and exclusions:

- | | | |
|----|----------------|--|
| 1) | Commercial Use | This product is not intended for commercial use and carries no commercial warranty. |
| 2) | Limitation | This warranty applies only to products which have been properly assembled, adjusted, and operated in accordance with the instructions contained within this manual. This warranty does not apply to any product of Swisher that has been subject to alteration, misuse, abuse, improper assembly or installation, shipping damage, or to normal wear of product. |
| 3) | Exclusions | Excluded from this warranty are normal wear, normal adjustments, and normal maintenance. |

In the event you have a claim under this warranty, you must return the product to an authorized service dealer. All transportation charges, damage, or loss incurred during transportation of parts submitted for replacement or repair under this warranty shall be borne by the purchaser. Should you have any questions concerning this warranty, please contact us toll-free at 1-800-222-8183. The model number, serial number, date of purchase, and the name of the authorized Swisher dealer from whom you purchased the product will be needed before any warranty claim can be processed.

THIS WARRANTY DOES NOT APPLY TO ANY INCIDENTAL OR CONSEQUENTIAL DAMAGES AND ANY IMPLIED WARRANTIES ARE LIMITED TO THE SAME TIME PERIODS STATED HEREIN FOR ALL EXPRESSED WARRANTIES. Some states do not allow the limitation of consequential damages or limitations on how long an implied warranty may last, so the above limitations or exclusions may not apply to you. This warranty gives you specific legal rights and you may have other rights, which vary from state-to-state. This is a limited warranty as defined by the Magnuson-Moss Act of 1975.

SAFETY PRECAUTIONS

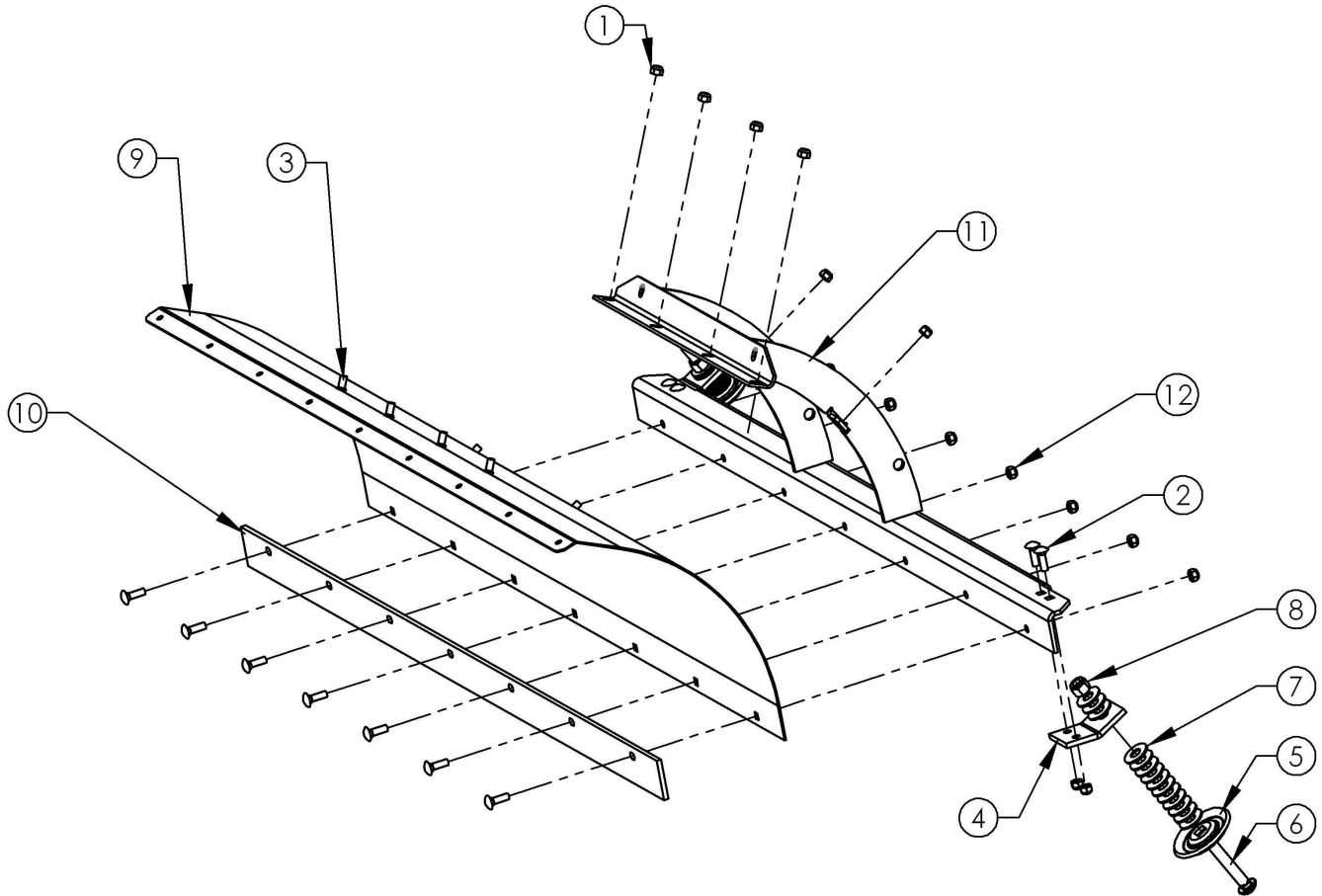


This Safety Alert Symbol indicates important messages in this manual. When you see this symbol, carefully read the message that follows and be alert to the possibility of personal injury.

Read this manual completely. Failure to observe the following safety instructions could result in serious injury or death.

- Read the manual. Learn to operate this machine safely.
- Keep the operating speed LOW!!!!
- Allow only responsible adults who are familiar with these instructions to operate this machine. Never allow children to operate this machine.
- Be sure the area is clear of other people before operating. Children are often attracted to the machine and the operating activity. ***Never assume that children will remain where you last saw them.*** Keep children under the watchful care of another responsible adult.
- Watch for traffic when operating near or crossing roadways.
- Do not operate the attachment if it has been dropped or damaged in any manner. Repair as necessary.
- Dress properly. Do not operate when barefoot or wearing open sandals.
- Do not operate the machine while under the influence of alcohol or drugs.
- Never tamper with safety devices. Check their proper operation regularly.
- Do not operate over 5 mph (8 km/h).
- Operate attachments up and down slopes. There is significant risk of overturns when operating across slopes.
- Stop and inspect the equipment if you strike an object. Repair, if necessary, before restarting.
- Never make adjustments or repairs with the engine running.

ASSEMBLY PARTS LIST



ITEM NO.	PART NO.	DESCRIPTION	18749/QTY.	18750/QTY.
1	NB181	5/16-18 Nyloc Nut	10	10
2	10197	5/16-18 X 1 Carriage Bolt	11	13
3	10216	5/16-18 X 3/4 Carriage Bolt GR5	6	6
4	7808	Skid Mount Plate	2	2
5	7809	Skid Shoe	2	2
6	10500	1/2 X 3 Carriage Bolt	2	2
7	NB555	1/2 USS Flat Washer ZP	28	28
8	NB281	1/2-13 Nyloc Nut	2	2
9	7801	48" Plow Blade	1	0
9	7861	60" Plow Blade	0	1
10	7807	48" Plow Blade Edge	1	0
10	7862	60" Plow Blade Edge	0	1
11	7806	48" Plow Blade Frame-Weldment	1	0
11	7864	60" Plow Blade Frame-Weldment	0	1
12	NB170	5/16-18 Serrated Flange Nut	7	9



TO ENSURE PROPER ASSEMBLY, CAREFULLY FOLLOW ALL INSTRUCTIONS LISTED BELOW

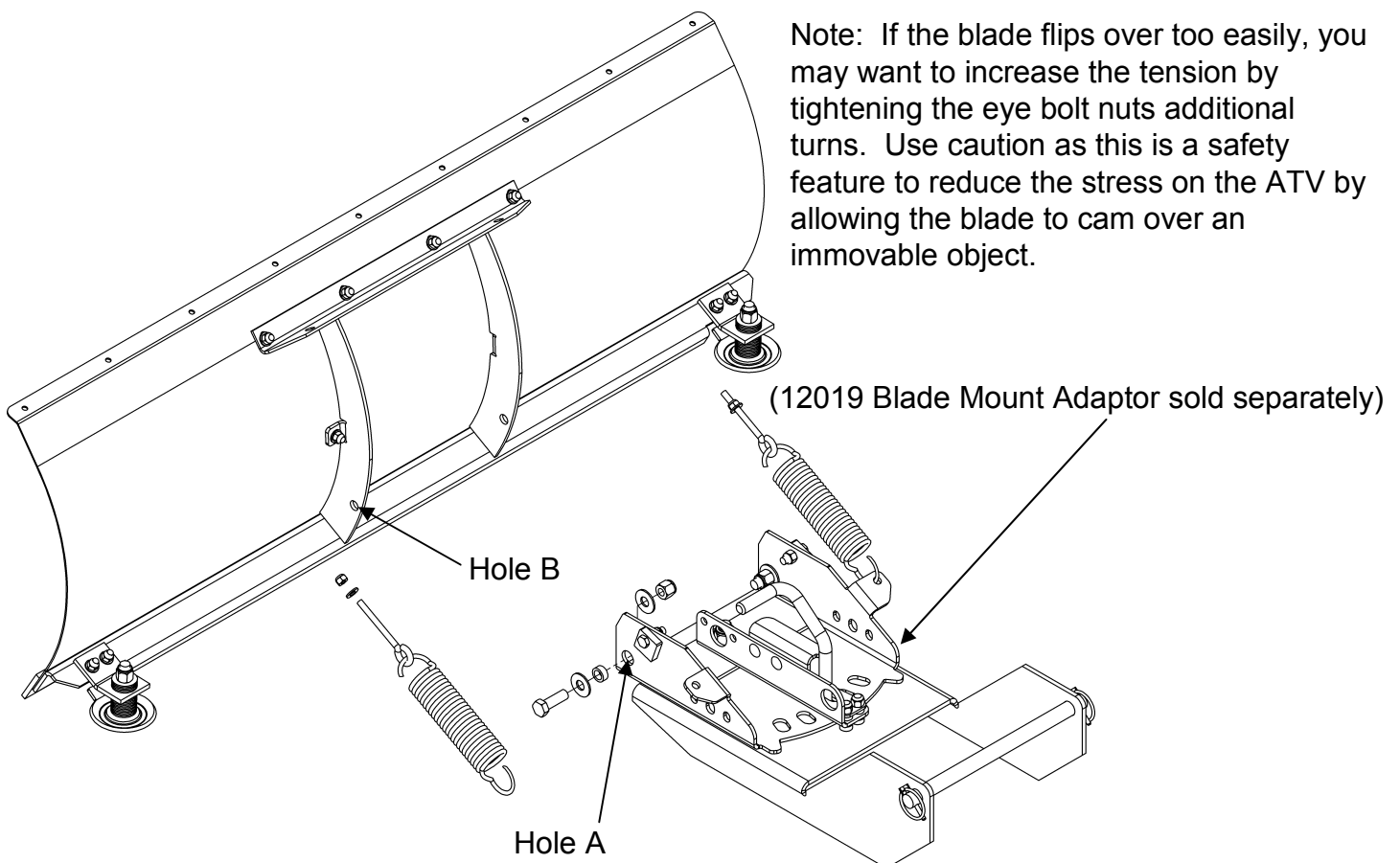
Assembly of Blade to Blade Mount Adaptor (sold separately).

The bolts, washers, nuts, and spacers used to assemble the plow blade to the blade mount adaptor kit are located in the blade mount adaptor hardware bag.

Place the adaptor assembly against the blade assembly aligning holes A and B. Insert the spacer into the hole in the hinge plate and place the bolt through the assembly with a washer on each side as shown. Attach the nut and hand tighten. Repeat this step on the other side. After the hardware is assembled, tighten both bolts. Rotate the blade forward to assure that the blade will pivot freely.

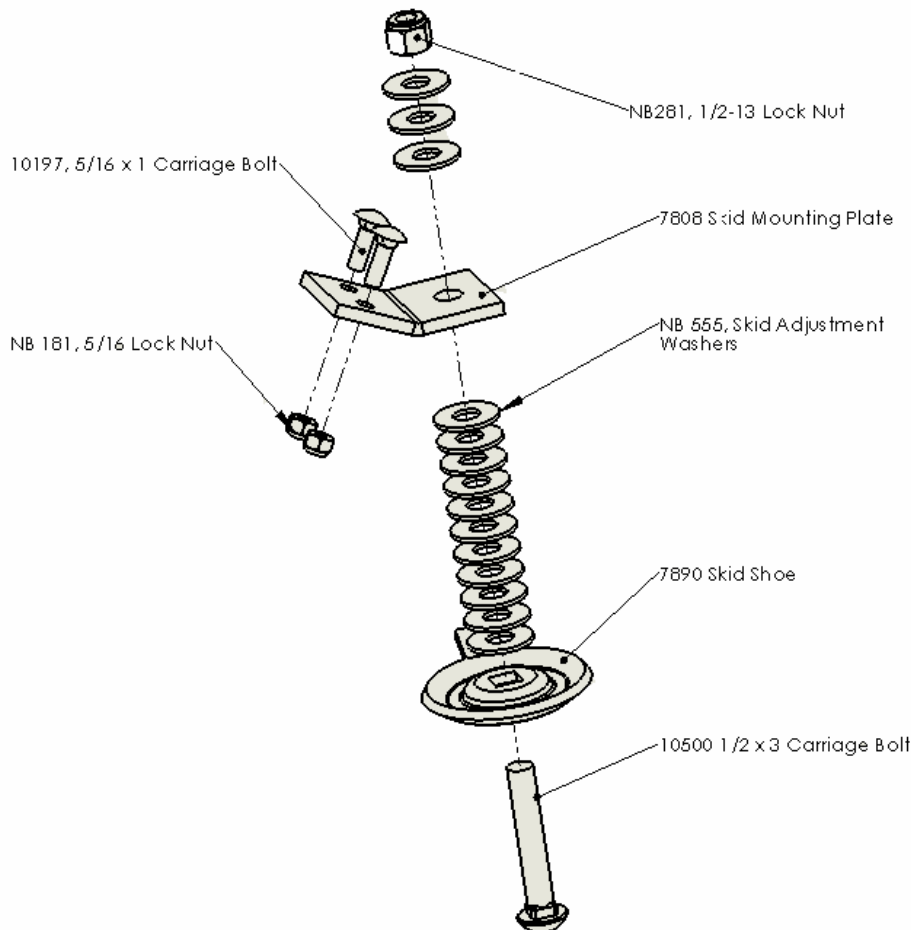
Install one loop of the tilt springs into the tab on the hinge plate and on the other end place the eye bolt. The end of the eye bolt goes through the hole in the upper support plate at the back of the blade frame. Tighten the nut until the spring coils begin to spread apart. Repeat on the other side.

Note: If the blade flips over too easily, you may want to increase the tension by tightening the eye bolt nuts additional turns. Use caution as this is a safety feature to reduce the stress on the ATV by allowing the blade to cam over an immovable object.





ADJUSTMENT AND OPERATION



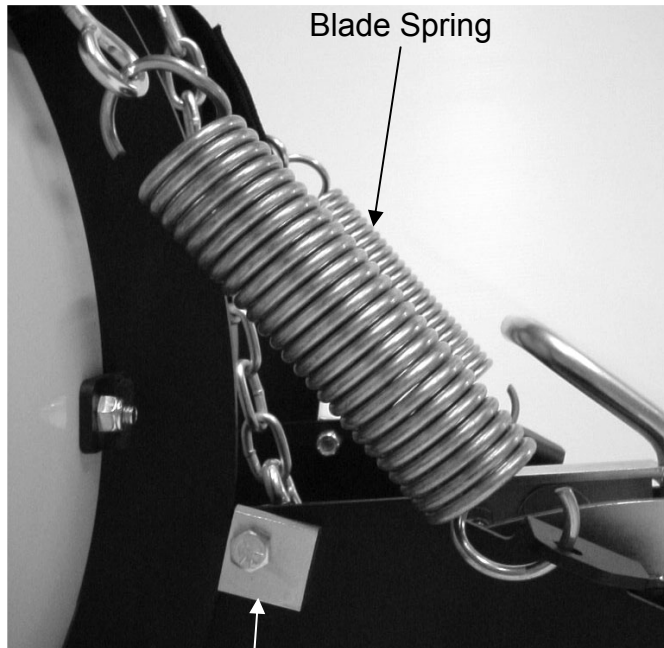
Adjust the Skid Shoe by moving adjustment washers so that it just touches the ground when the blade is in the down position. When blade is installed on ATV tighten all hardware.

PUSH YOUR PLOW AROUND!!

THE TENSION PLACED ON THE TILT SPRINGS DETERMINE THE AMOUNT OF PRESSURE THAT MUST BE APPLIED TO THE BLADE BEFORE IT FOLDS OVER IF SOMETHING IS HIT.

ADJUST THE SPRINGS BY LOOSENING THE NUTS ON THE EYEBOLTS AND ADJUSTING UNTIL THE BLADE DOES NOT FOLD OVER DURING NORMAL OPERATION BUT WILL FOLD IF AN OBJECT IS STRUCK.

IF YOU NEED TO CHANGE THE BLADE ANGLE WHILE OPERATING, COME TO A STOP, RELEASE THE LOCK ARM. WHEN THE PROPER ANGLE IS ACHIEVED RELEASE THE LOCK ARM, LOCKING THE BLADE IN PLACE.



The Plow blade can be adjusted to five plowing angles, using the blade latch assembly, and four vertical tilt angles by loosening and turning the eccentric adjusting block as shown.

Blade tilt adjustment, loosen bolt and rotate block to change angle.



CHANGING YOUR LANDSCAPE SINCE 1945

Owner's Manual

***Plow Blade
18749
18750***



IMPORTANT
Read and follow all
Safety Precautions
and Instructions
Before Operating this
Equipment.

ATV ACCESSORIES

WHEN ORDERING PARTS, PLEASE HAVE THE
FOLLOWING INFORMATION AVAILABLE:

- * PRODUCT - _____
- * SERIAL NUMBER - _____
- * MODEL NUMBER - _____
- TYPE - _____
- * PART NUMBER WITH PAINT CODE
- * PART DESCRIPTION

TELEPHONE - 1-800-222-8183

FAX - 1-660-747-8650

SWISHER

1602 CORPORATE DRIVE
WARRENSBURG, MO 64093

swisherinc.com

1602 CORPORATE DRIVE WARRENSBURG, MISSOURI 64093

TELEPHONE: 800.222.8183 FAX: 660.747.8650

swisherinc.com