



Thank you for your purchase of Micro Touch One safety razor – the modern version of a timeless classic! From the late 1800's to the 1970's this was the way to shave. It's the one razor that delivers a smooth and professional quality shave. If this is the first time using a safety razor please be sure to read the instructions below completely. We are sure that MicroTouch One will be your go-to razor for years to come.

**Caution:** Blades are sharp and must be handled with care. Keep away from children and pets. Store razor blades away from reach of children. Razor blades **MUST** be disposed of properly. It is recommended that they are wrapped or placed in a disposable case prior to discarding, or placed in the bottom slot of the original blade storage case. **Never handle blades by cutting edges.**

## Getting Started

- Twist the knob located at the bottom of the razor handle to open the blade chamber (Image 1) until the doors are completely open.
- Carefully remove a blade from the package then carefully remove the protective covering (if applicable).

**Caution:** Blades are sharp and must be handled with care when removing, replacing or discarding. **Never handle blades by the cutting edges.**

- Hold the blades by the sides (Image 2).
- Place the blade in the blade chamber (Image 3). Give the handle a gentle shake to help seat the blade. Make sure the blade is centered from end to end and hold the razor head level.
- Twist the knob located at the bottom of the razor handle to close the blade chamber (Image 1) until completely closed and the blade is secure.
- Now your MicroTouch One is ready for an unbelievable shave!

Image 1

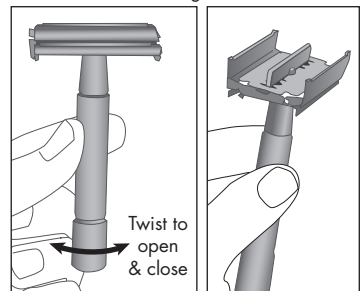


Image 2

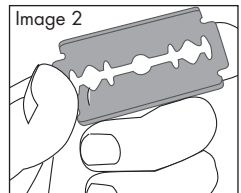
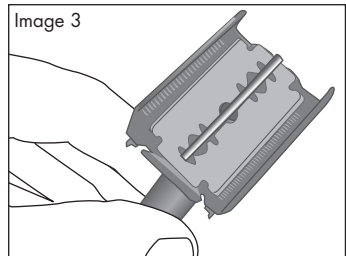


Image 3



## Preparing Your Face for Shaving

### Option 1

Shave after you shower, the heat from the shower softens the beard and relaxes your skin.

### Option 2

Take a cloth and wet it with hot tap water (do not use water that is excessively hot and your skin cannot tolerate) place on your beard to soften the bristles leave it on for 1 to 2 minutes.

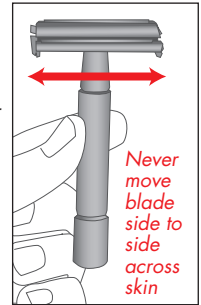
Prepare skin and hair with a thick, moisturizing shaving cream, gel or lotion. Allow it to remain on your face and hair for a few minutes to soften the hair. This will also allow the moisturizing agents to protect your skin.



## Shaving with Your MicroTouch One

If this is your first time using a safety razor, take your time to get comfortable with this system. Once you do, we know you'll love it. Please follow the steps below for best results.

- Shave with the grain of your hair (this is the direction your hair grows). Remember to check your neck, cheek and chin as the direction may vary)
- Do not hold the razor near the cutting head this can cause the shaver to press too hard against your face during the shave and result in accidental cuts or skin irritation. Hold the razor at the correct position near the tip of the handle like a knife or pen allowing the blade to track along the skin at about a 45 degree angle. This will provide the most comfortable and efficient cutting action possible. With your other hand it may be necessary to hold your skin taut creating a flat surface for the razor. Take short strokes at first, and after each stroke rinse the razor.
- When confident with using your Safety razor and want to get that really smooth skin you can re-lather and lightly cut against the grain.



**Note:** If you are prone to ingrown hairs, it is recommended that you only shave in the direction of your hair growth to minimize the likelihood of ingrown hairs.

**Important:** Once you're not getting the shave you desire it may be time to change your blade.

**DISPOSE OF THE USED BLADES PROPERLY.**

## Care of Skin and Razor After Shaving

- Once you're finished, rinse with cold water to close your pores.
- Apply your favorite after shave balm.

**Tip:** It is recommended to use a fragrance free, alcohol free aftershave to minimize irritation.

- Open the razor blade chamber per the instructions above then rinse the razor blade until all debris is cleaned from the blade and blade chamber.
- Close the blade chamber then shake dry and store on the MicroTouch One stand until your next shave.

## Razor Blade Safety

- Razor blades are **EXTREMELY** sharp and must be handled with care.
- Store razor blades out of the reach of children.
- Razor blades **MUST** be disposed of properly.
- **NEVER handle blades by the cutting edges**

## Proper Blade Disposal

- Place used blades inside the bottom slot of the original blade storage case. (Image 4)
- If you no longer have the original blade storage case, it is recommended that razor blades are wrapped or placed in a disposable case prior to discarding.

