

Bradley Power Plus Blade Sharpener

8" Bi-Directional Blade Sharpener
Model S81-2

Parts & Owner's Manual



WWW.HAVENERENT.COM

Manufacturers of Quality Mowers, Sulkies, and other Turf Maintenance equipment. Commercial Quality at low prices.
All products can be purchased on-line and shipped direct.

Havener Enterprises, Inc.
368 S. Michigan Ave. • Bradley, IL • 60915
815.935.8383

Manual #M-0003 Rev. Aug 5, 2008

TABLE OF CONTENTS

About This Manual	2
Safety Information	3
Unpacking, Inspection, and First Start-up	4
Operation of Blade Sharpener	4
Maintaining Your Blade Sharpener	5
Illustrated Parts List	5 & 6
Warranty Statement	7
Notes	8

ABOUT THIS MANUAL

Congratulations on the purchase of your new Bradley Power Plus Blade Sharpener. We are confident that this Blade Sharpener will provide you with years of excellent performance, durability, and trouble free service when operated and maintained as directed in this manual.

This owner's manual is considered a permanent part of the Bradley Power Plus Blade Sharpener. It must be available to all of the operators and/or person(s) servicing the Blade Sharpener. Should the unit be resold, this manual must remain with the unit.

All information, illustrations, and specifications contained in this manual were in effect at the time of publication. The Manufacturer reserves the right to change, modify, and/or discontinue specifications and/or design without notice. Please contact your authorized dealer before operating and/or servicing the equipment if there is a change that has been made to your Blade Sharpener that is not shown or reflected in this manual.

Should you ever have any questions regarding the operation, maintenance, or safety of your Blade Sharpener, please contact your authorized dealer who has been trained on the operation and servicing of this unit.

A space has been provided below to record information about your new Blade Sharpener. Please take the time to record such information for future reference, especially when you contact an authorized dealer with questions.

If you did not sign and receive your copy of your warranty registration, contact your Even Cut dealer to do so immediately! Before any warranty service can be authorized this product must be registered with Havener Enterprises, Inc.

Date Purchased: _____
Model Number: S81-2
Purchased From: _____

SAFETY INFORMATION

Read This Manual Carefully And Thoroughly Before Operating The Blade Sharpener!

Training



Indicates an imminently hazardous situation which, if not avoided, will result in death or serious injury.



Indicates a potentially hazardous situation which, if not avoided, could result in death or serious injury.



Indicates a potentially hazardous situation which, if not avoided, may result in minor or moderate injury. It may also indicate an unsafe practice.

CALIFORNIA PROPOSITION 65



Crystalline Silica from bricks, cement, and other masonry products may be harmful to your health as determined by California Proposition 65. When using sharpener wheel devices, it is recommended that you wear the correct NIOSH approved respirator.

GENERAL SAFETY RULES



Failure to follow these rules may result in serious injury.

1. Read and understand the owner's manual.
2. Never allow anyone to operate the Blade Sharpener that has not read and fully understood the owner's manual. Operators must give their full attention while using the Blade Sharpener.
3. Wear protective clothing. Do not wear clothing or jewelry that will entangle in the rotating wheel.
4. Wear safety glasses with side shields to reduce the risk of injury from thrown objects or dust particles.
5. Wear a NIOSH approved respirator for the type of sharpener wheel you are using.
6. Use the appropriate hearing protection if required. Refer to OSHA standards.
7. Check for damaged parts before using the machine. Do not use the machine if any parts are damaged.
8. Be certain that the wheel guard is in place.
9. Feed the work piece against the direction of the rotating sharpener disk.
10. Always use this Blade Sharpener in a well ventilated area.
11. Remove dust particles from your skin after each use.
12. Use only wheels suitable for 3600 rpm of rotation speed. Wheels must not be greater than 8" dia.
13. Use only wheels that have a 5/8" bore. Do not modify sharpener wheel bores or the mounting shaft diameter to accommodate other sharpener wheel bores.
14. Inspect the sharpener wheel before each use. Do not use cracked or damaged sharpener wheels.
15. Do not stand in the direct line of the wheel for the first minute after turning on.
16. Do not use the side of the sharpener wheel at any time.
17. Be certain that the motor switch is in the "off" position before plugging in the Blade Sharpener.
18. Outside of the USA, check with local and national codes for the required safe use and electrical requirements.



Do not operate this machine in the rain or in damp locations. Do not remove the grounding plug or bypass the grounding plug with an electrical adaptor.

UNPACKING, INSPECTION, and FIRST START-UP

After unpacking the S81 Blade Sharpener, inspect it for any damage or loose components. Nuts, bolts and screws may be tightened with the correct tools. Inspect to see that the Sharpener Wheel is free to rotate without contacting the frame or cover. Be certain that the Sharpener Wheel is not chipped or cracked. Be certain that the electrical cord has not been damaged such as cut insulation or exposed wires. A damaged electrical cord must be replaced. Do not stand in front of the Sharpener Wheel when turning the machine on for the first time.

HANDLE INSTALLATION



Install the Wheel Height Adjustment Handle by first placing the flat washer over the threaded rod, and then screw the Handle onto the threaded rod until the threaded rod is flush with the top of the Handle knob. There should be a small gap as shown in the above photo. Tighten the two set screws with the enclosed Allen wrench.

OPERATION OF BLADE SHARPENER



Never operate the Blade Sharpener unless the Wheel Guard is properly in place. Operating without the guard in place can cause serious injury.

- 1] Turn on the Blade Sharpener, selecting the direction of rotation based on the cutting surface you will be using.
- 2] Allow the Sharpening Wheel to rotate for one minute before using it, to be certain that the wheel has not been severely damaged.
- 3] Be certain to hold the work piece firmly such that any sudden or unexpected movements will not cause personal injury.
- 4] Feed the work piece into the direction of the rotating wheel.
- 5] Work piece may become hot after it has touched the Sharpening Wheel.

MAINTAINING YOUR BLADE SHARPENER



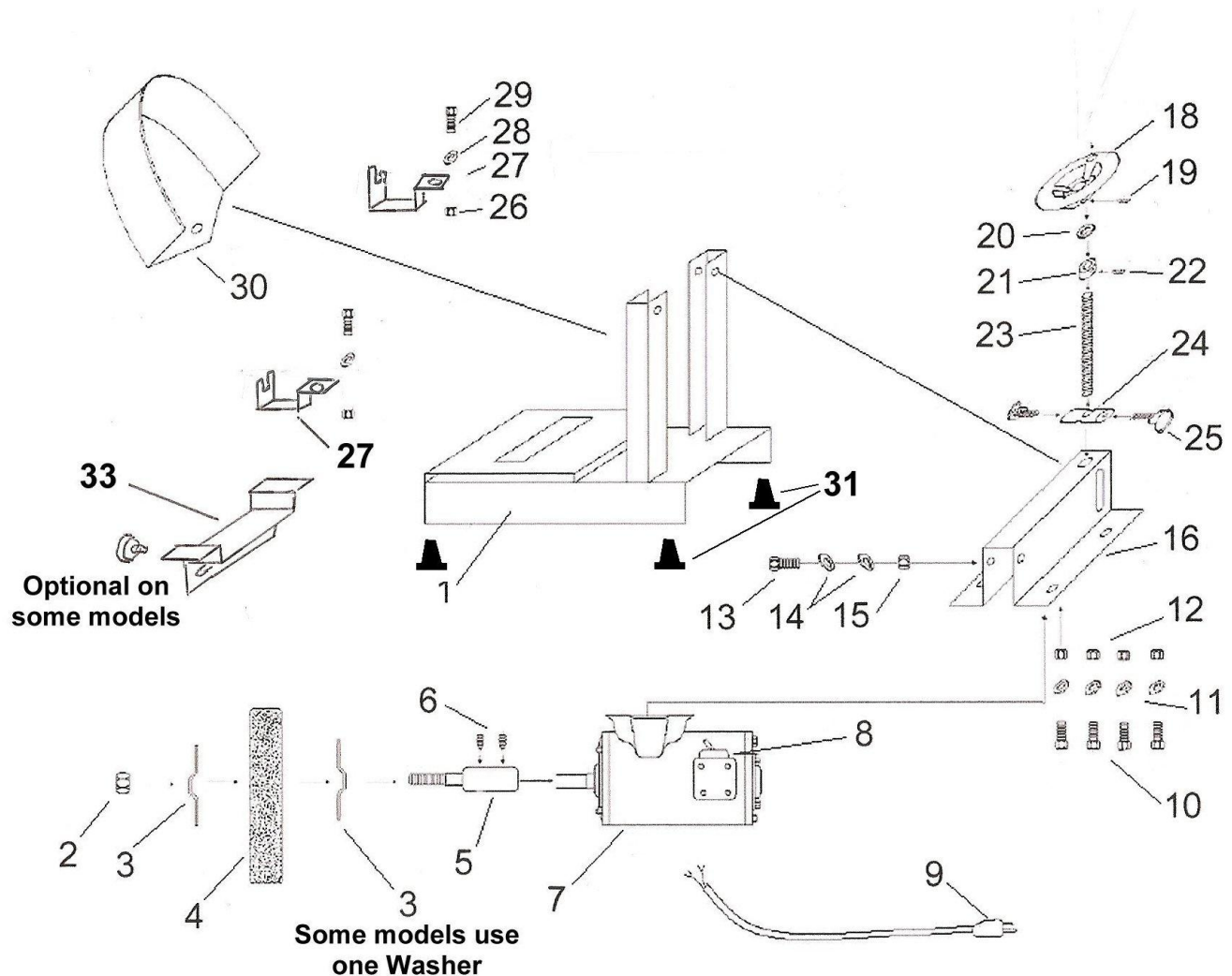
CAUTION

To minimize the chance of injury always perform maintenance and adjustments with the on/off switch in the "off" position and the motor unplugged.

Routine Maintenance:

- 1] Keep your Blade Sharpener clean of dust and contamination.
- 2] The Sharpening Wheel should be inspected for un-even wear that would cause an out-of-balance condition while operating.
- 3] The Sharpening Wheel should be inspected for chips and cracks that could cause debris to become dislodged.

ILLUSTRATED PARTS LIST



Parts List Bradley Blade Sharpener Model: S81-2

1	6001	Frame	1
2	6002	Nut, Hex - Toplock 5/8-16	1
3	6003	Washer, Spring - 5/8" I.D.	2
4	6004	Wheel, Grinding - 5/8" bore x 8" O.D.	1
5	6005	Adapter, Wheel - 5/8 Bore	1
6	6006	Screw, Set. Cup Pt. - M8 x 10mm Long	2
7	6007	Motor - AC	1
8	6008	Switch - 3 position	1
9	6009	Frame	1
10	6010	Screw, Hex - M8 x 25mm Long	2
11	6011	Washer, Flat - M8 x 17mm O.D.	4
12	6012	Nut, Hex - Nylock M8	4
13	6013	Screw, Hex - M8 x 75mm Long	1
14	6011	Washer, Flat - M8 x 17mm O.D.	2
15	6012	Nut, Hex - Nylock M8	1
16	6016	Stand, Motor Support	1
17			
18	6018	Wheel, Hand - M10 Thread	1
19	6006	Screw, Set. Cup Pt. - M8 x 10mm Long	3
20	6020	Washer, Flat - M10 x 24mm O.D.	1
21	6021	Collar - M10 Thread	1
22	6006	Screw, Set. Cup Pt. - M8 x 10mm Long	1
23	6023	Rod, Threaded - M10 x 125mm Long	1
24	6024	Adapter, Threaded	1
25	6025	Knob, Knurled - 1" O.D. w/M8 Thread	2
26	6031	Nut, Hex Jam - M6	2
27	6027	Bracket - Left & Right set	1 set
28	6011	Washer, Flat - M8 x 17mm O.D.	2
29	6029	Screw, Hex - M6 x 12mm Long	2
30	6030	Cover, Wheel	1
31	6032	Feet, Rubber	4
32 not shown	6033	Blade Balancer (optional on some models)	1
33	6034	Blade Support (optional on some models)	1 ass'y
34 not shown	6035	Label: "Always Stand In Front"	1
35 not shown	6036	Label: "Maintain Gap" (for item 6034)	1
36 not shown	6037	Labels - Direction (one forward, one Rev)	1 set
37 not shown	6038	Label: "Bradley"	1
38 not shown	6039	Label: "Warning - For your Safety"	1

WARRANTY STATEMENT

LIMITED WARRANTY: Havener Enterprises, Inc. warrants that the above product is free from original defect, in workmanship and material (excluding the stone) for 12 months from date of purchase. Warranty is void if product has been damaged through causes not arising out of defects in material or in workmanship. Bent parts of product, coating and paint are specifically excluded from this warranty. Havener Enterprises, Inc disclaims any consequential damages, arising from the breach of any warranty. (Some states do not allow the exclusion of consequential damages, so the above disclaimer may not apply to you.) During the above mentioned warranty period, the product will either be repaired or replaced with a new or reconditioned model of an equal equity (at Havener Enterprises, Inc's option) when the product is returned (prepaid and insured) with a copy of the original retail invoice, to Havener Enterprises, Inc., 368 S Michigan Ave, Bradley, IL 60915. Phone: 815.935.8383

Havener Enterprises, Inc. • 368 S Michigan Ave • Bradley, IL • 60915 • www.havenerent.com