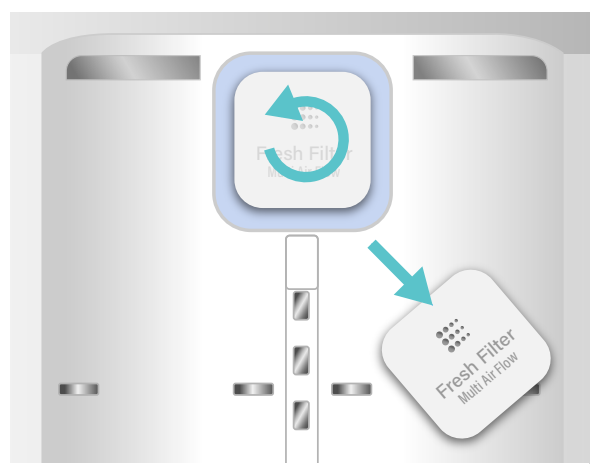
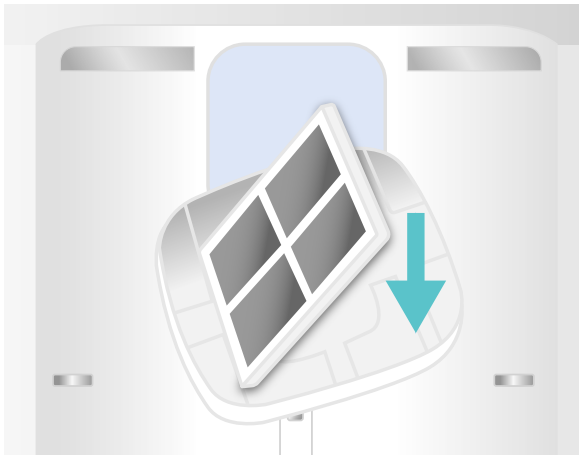


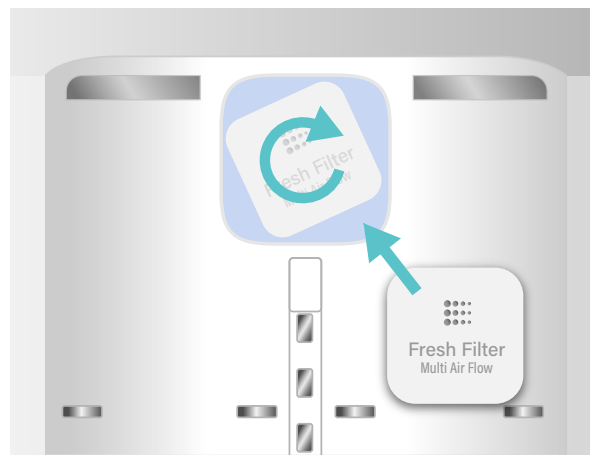
**Step 1:**  
Locate filter housing



**Step 2:**  
Remove the housing by turning it counter-clockwise



**Step 3:**  
Replace the old filter with the new one - carbon facing outward



**Step 4:**  
Replace the housing into the refrigerator by turning it clockwise

FOR EASY REORDER  
use the camera app on your  
smartphone to scan this QR code



Use code **REORDER** for 10%  
off of your next order

[www.mayafilters.com](http://www.mayafilters.com)



Installation Manual  
for BAF043 LT120F  
Air Filter Replacement